

## TRILOGY — BROWARD



**Builder:** BROWARD

**Year Built:** 1988

**Model:** Motor Yacht

**Price:** PRICE ON APPLICATION

**Location:** United States

**LOA:** 103' 0" (31.39m)

**Beam:** 19' 6" (5.94m)

**Max Draft:** 5' 6" (1.68m)

**Cruise Speed:** 12 Kts. (14 MPH)

**Max Speed:** 17 Kts. (20 MPH)

Our experienced yacht broker, Andrey Shestakov, will help you choose and buy a yacht that best suits your needs **Trilogy — BROWARD** from our catalogue. Presently, at Shestakov Yacht Sales Inc., we have a wide variety of yachts available on our sale's list. We also work in close contact with all the big yacht manufacturers from all over the world.

If you would like to buy a yacht **Trilogy — BROWARD** or would like help answering any questions concerning purchasing, selling or chartering a yacht, please call **+1(954)274-4435**

---

# TABLE OF CONTENTS

---

TABLE OF CONTENTS	2
SPECIFICATIONS	3
Overview	3
Basic Information	3
Dimensions	3
Speed, Capacities and Weight	4
Accommodations	4
Hull and Deck Information	4
Engine Information	4
DETAILED INFORMATION	5
Accommodation, Furnishing & Layout	5
Galley & Laundry	6
Deck Equipment	7
Electronics & Navigation Equipment	7
Electrical System	8
Mechanical Equipment & Engine Details	8
Exclusions	9
Disclaimer	9
PHOTOS	10
CONTACTS	21
Contact details	21
Telephones	21
Office hours	21
Address	21

---

# SPECIFICATIONS

---

## Overview

---

This spacious classic motor yacht offers a traditional layout with many updates by current owner. Trilogy has been a great family cruising yacht and has proven to be a very good sea boat with trips throughout the Caribbean and East Coast USA. The elegant interior includes a spacious main salon, ideal for entertaining, with dining table and bar, a large eat-in galley, 2 aft guest suites, a large master suite with 2 heads and Jacuzzi tub, and 3 forward crew quarters. The roomy exterior includes a spacious flybridge with dining table, surround seating, large cockpit with tables, and seating, Euro style transom, swim platform and sun pad.

### Extras include:

- Direct TV throughout
- New LED Underwater Pro Multi-color lights (Sept 2014)
- Brownies Air Dive compressor
- Bow thruster
- Stabilizers
- Watermaker
- 10' 2014 Evolution Tender with Yamaha engines
- 2 Wave Runners
- New Bottom ( January 2015)
- Prop speed ( January 2015) Owner will entertain all offers, including trade on property.

## Basic Information

---

**Category:** Motor Yacht

**Model Year:** 1988

**Year Built:** 1988

**Country:** United States

## Dimensions

---

**LOA:** 103' 0" (31.39m)

**Beam:** 19' 6" (5.94m)

**Max Draft:** 5' 6" (1.68m)

---

## Speed, Capacities and Weight

---

**Cruise Speed:** 12 Kts. (14 MPH)

**Max Speed:** 17 Kts. (20 MPH)

**Displacement:** 262000 Pounds

**Water Capacity:** 1690 Gallons

**Fuel Capacity:** 8300 Gallons

---

## Accommodations

---

**Total Cabins:** 3

**Total Heads:** 5

**Crew Heads:** 1

---

## Hull and Deck Information

---

**Hull Material:** Aluminum

---

## Engine Information

---

**Engines:** 2

**Manufacturer:** Detroit Diesel

**Model:** 12V 71 T1

**Engine Type:** Inboard

**Fuel Type:** Diesel

---

# DETAILED INFORMATION

---

---

## Accommodation, Furnishing & Layout

---

- Number of owner & guests that can sleep in staterooms: 6
- Number of owner & guest staterooms on vessel: 3
- Master Stateroom Amidship has head, shower with king
- (4) Guest heads
- (1) Day Head
- (2) Guest showers
- (1) Additional captain & crew Berth
- (3) Crew Cabins
- (1) Crew Head/ shower
- Carpeting
- Drapes
- (2) Furniture chairs
- (2) Tables
- (1) Sofa
- Wet Bat

### Master

- King berth
- Samsung 32" LCD TV (2014)
- SAT-TV
- Custom shower
- Custom soft goods
- Pioneer DVD Player
- Kohler sink's His & Hers
- Walk-in cedar closet
- LED Lights

### Guest Cabin 1

- Queen berth
- Samsung 32" LCD -TV (2014)
- SAT-TV
- Custom soft goods
- Cedar hanging closet

### Guest Cabin 2

- Queen Berth
- Samsung 32" LCD TV (2014)
- SAT-TV

- Custom soft goods
  - Cedar hanging closet
- 
- Port Aft Stateroom new Tile and fixtures in head January 2015

### Saloon

- Custom soft goods
- Custom L-Shaped sofa
- Samsung 55" LED TV(2014)
- SAT-TV HD
- Wii System
- Sony CD changer
- Yamaha stereo system receiver
- Pioneer DVD player
- Day Head
- New Carpet

### Dinette

- Custom 6 person dinette table
- Full bar counter top
- Sink
- Edgestar cooler-refrigerator

## Galley & Laundry

---

- Galley is up
- Kitchen Aid Stove Burner (5)
- Water Heater
- Pressure water system; dockside
- Electronic dishwasher
- Kitchen Aid refrigerator w/ freezer (2015)
- Kitchen Aid trash disposal
- (1) Edgestar cooler & Refrigerator
- Country kitchen breakfast table
- Samsung Microwave (2015)
- Samsung 27" LCD TV
- Kitchen aid oven
- Maytag washer
- Maytag dryer

---

## Deck Equipment

---

- (1) Anchor
- Bow Pulpit & Rails
- Cover s & Curtains
- Bimini Top
- Coast Guard Approved Safety Package
- Deck wash Down System: Freshwater and Saltwater
- Fenders and Lights
- Navigation Lights
- Swim ( Boarding ) Ladder
- Ideal Electric Windlass (2015)
- Windshield Washer & Wipers
- (2) Stand up paddle Boards
- Marquipt 1500 LB Davit
- 10' Evolution tender with a Yamaha 110 hp
- (2 ) Yamaha Wave Runner (2011)
- ACR Epirb
- Jacuzzi Hydro Spa New heat pump ( June 2015)
- LG Washer located engine room (2014)
- LG Dryer located engine room(2014)
- Charbroil BBQ
- GE Chest Freezer
- Ice-o- matic Ice Maker
- Euro Style Transom
- New Bait Freezer Chest (2015)
- Brownies Dive Air Compressor

---

## Electronics & Navigation Equipment

---

- Robertson AP9 MK II Auto Pilot
- (1) 7" Compass
- Standard Horizon VHF
- Icom m422 VHF
- Standard Ram Mic
- Sea 322 Satellite
- Spot - Global Phone
- QC ARC 3000 adaptive roll control
- Furuno open array
- Furuno 120 NM radar( August 2014)

- **Furuno 3D NavNet ( June 2015)**
- **Furuno GPS**
- **Nobeltec plotter- New Software 2015**
- **Proscan monitor**
- **(2) ACR RCL-100**
- **(2) Furuno RD-30 Depth Finder**
- **Furuno RD-30 Speed Log**
- **Sony Stereo System**
- **Wave Wifi System**
- **Globe Surfer**
- **Ocean LED Pro Multicolor Underwater Light ( Jan 2015)**

---

## **Electrical System**

---

- **Auto Battery Charger**
- **Dockside Electrical Cable**
- **Kilopak Generator ( Primary) 35kw w/ 2037 hours**
- **Kilopak Generator ( secondary) 35kw w/ 2973 hours**
- **Electrical System ; AC 110V**
- **Xantrex 40 AMP- Charger**
- **Sentry 30 AMP-Charger**
- **Newmar DC- Converter**
- **(2) Iso Boost 100 volt**

---

## **Mechanical Equipment & Engine Details**

---

- **Marine Air air Conditioner New compressor 2014**
- **(3) Auto Bilge Pump**
- **HPS- Hydraulic Bow Thrusters rebuilt in 2015**
- **Controls: Cabin, Bridge**
- **Engine Alarm**
- **Emergency Engine Stop**
  
- **Fire Extinguishing System: Auto; Halon Certified October 2015 with Halon Refill**
  
- **Fresh water cooling system**
- **Fuel filters**
- **Fuel shut off valve: engines**



- **Quantum 100 Stabilizers (2015)**
- **Steering: Hydraulic**
- **Synchronizers Trim Tabs**
- **Transmission : ZF-2.57.1**
- **Offshore watermaker capacity 1300 gpd**
- **Triple Racor filters for each engine**
  
- **New engine room flooring (October 2015)**
  
- **New Crew area Sump Pump**

---

## **Exclusions**

---

Owner's personal belongings.

---

## **Disclaimer**

---

The Company offers the details of this vessel or yacht in good faith but cannot guarantee or warrant the accuracy of this information nor warrant the condition of the vessel. A buyer should instruct his representatives, agents, or his surveyors, to investigate such details as the buyer desires validated. This vessel or yacht is offered subject to prior sale, price change, or withdrawal without notice.

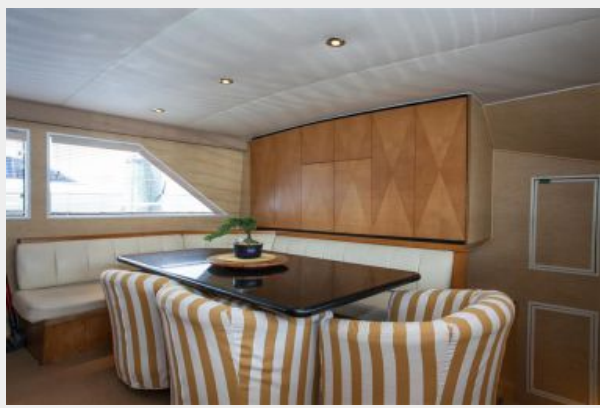
# PHOTOS

























# CONTACTS

---

Andrey Shestakov, leading yacht broker of the sales department of Shestakov Yacht Sales Inc. Shestakov Yacht Sales Inc., the official representative of the Miami/Fort Lauderdale FL headquarters.

## Contact details

---

Email: [andrey@shestakovyachtsales.com](mailto:andrey@shestakovyachtsales.com)

Web: [shestakovyachtsales.com/en/](http://shestakovyachtsales.com/en/)

## Telephones

---

USA: +1(954)274-4435

## Office hours

---

Monday – Saturday: **9:00 - 21:00** EDT

Sunday: **closed**

## Address

---



Harbour Towne Marina, 850 NE 3rd St,  
STE 213, Dania, FL 33004