

ALWAYS SOMETHING — GRAND HARBOUR



Судостроитель: GRAND HARBOUR

Год постройки: 2009

Модель: Моторная яхта

Цена: ЦЕНА ЯХТЫ ПО ЗАПРОСУ

Местонахождение: Greece

Длина общая: 67' 0" (20.42m)

Ширина: 17' 6" (5.33m)

Мин. осадка: 4' 8" (1.42m)

Макс. осадка: 4' 8" (1.42m)

Крейс. скорость: 22 Kts. (25 MPH)

Макс. скорость: 26 Kts. (30 MPH)

Купить **Always Something — GRAND HARBOUR** а также выбрать подходящую вам яхту из нашего каталога яхт вам поможет опытный яхтенный брокер Андрей Шестаков. На сегодняшний день компания **Shestakov Yacht Sales Inc.** имеет большое количество яхт в собственном списке продаж, а также тесно сотрудничает со всеми крупными яхтенными производителями по всему миру.

Для того чтобы купить яхту **Always Something — GRAND HARBOUR** а также проконсультироваться по любому вопросу связанному с покупкой, продажей, чартером яхт позвоните по телефону **+7(918)465-66-44**.

ОГЛАВЛЕНИЕ

ОГЛАВЛЕНИЕ	2
ХАРАКТЕРИСТИКИ	4
Обзор	4
Основная информация	4
Размеры	5
Скорость, вместимость и масса	5
Размещение	5
Корпус и палуба	5
Информация о двигателе	5
ПОДРОБНОЕ ОПИСАНИЕ	6
Salon	6
Accommodations	6
Galley	7
Lower Helm	7
Fly Bridge Helm	8
Fly Bridge	9
Deck	9
Electrical	10
Engine Room	10
Исключения	10
Отказ от ответственности	10
ФОТОГРАФИИ	12
NEW UPHOLSTERY COLOR	33
NEW UPHOLSTERY COLOR	33
NEW UPHOLSTERY COLOR	34
КОНТАКТЫ	35
Контактная информация	35
Телефоны	35

Время работы	35
Адрес	35

ХАРАКТЕРИСТИКИ

Обзор

U.S. DOCUMENTED VESSEL AVAILABLE TO CRUISE THE GREEK ISLANDS. GREAT OPPORTUNITY FOR U.S. BUYER. The yacht is berthed at Zea Marina, near the main port of Piraeus, Athens, Greece. Zea Marina is the most vibrant superyacht marina in Athens and one of the most preferred yacht destinations in Greece. Zea Marina is the ideal starting point for travel to the Aegean Coasts, the Saronic Gulf and the island of Crete. Close at hand are the Cyclades, the central group of islands in the Aegean consisting of 21 main islands and 20 smaller ones. Mykonos is only 90 nautical miles from Zea Marina.

Yacht was shipped from FT. Lauderdale to the Mediteranean in Spring 2018, where the owner cruised the summer season. Engines and generators serviced, new batteries, air conditioning and refrigeration serviced, new wine cooler. New carpet in staterooms. New bimini top and aft deck brow, all new exterior upholstery; blue and tan Sunbrella. All interior lights changed to LED. Ready to Cruise the Mediterranean Sea! Original Owner Since New, Yacht in Excellent Condition FOUR STATEROOM YACHT; THREE IN OWNER'S PARTY PLUS CREW/GUEST AFT.

Grand Harbour Yachts are built in Kaoshung, Taiwan and have been in business since 1985. Grand Harbour is a low volume builder and each vessel is customized to the original owner's requirements as far as possible within the limits of the original hull design. Grand Harbour can build yachts up to 120', but the majority have been built in the 48'-86' range with models ranging from Sportfish, Downeast style express cruisers, Raised Pilothouse Long Range Trawlers, Motoryachts, and Flybridge Euro Style Sport Cruisers.

Основная информация

Тип судна: Моторная яхта

Модельный год: 2009

Год постройки: 2009

Страна: Greece

Открытая палуба мостика: Да

Размеры

Длина общая: 67' 0" (20.42m)

Длина палубы: 67' 0" (20.42m)

Ширина: 17' 6" (5.33m)

Мин. осадка: 4' 8" (1.42m)

Макс. осадка: 4' 8" (1.42m)

Трапы: 24' 11" (7.59m)

Скорость, вместимость и масса

Крейс. скорость: 22 Kts. (25 MPH)

Крейсерская скорость поворота: 2000 Kts.

Макс. скорость: 26 Kts. (30 MPH)

Макс. скорость поворота: 2300 Kts.

Дальность на макс. скорости: 333 Kts.

Вместимость воды: 301 Gallons

Вместимость сточного бака: 69 Gallons

Объем топливного бака: 1000 Gallons

Размещение

Всего кают: 4

Всего коек: 4

Всего ком. состава: 4

Корпус и палуба

Материал корпуса: Fiberglass

Отделка корпуса: Aluminum

Информация о двигателе

Двигатели: 2

Производитель: Caterpillar

Модель: C-18

Тип двигателя: Inboard

Тип топлива: Diesel

ПОДРОБНОЕ ОПИСАНИЕ

Salon

Entering the salon from the aft deck through a stainless steel and tempered glass sliding door, to starboard is an L shaped sectional brown leather sofa that is over 9 feet long.

To port is a Dometic wine cooler, Nespresso coffee machine, automatic liquor dispenser, liquor cabinet and glass ware cabinets with pull out shelves, and entertainment center with 36" Sharp Aquos TV on electric lift with Direct TV through a KVH 4 Satellite receiver and Bose surround sound system; all built in elegant teak and burl cabinetry.

The salon has a berber style beige carpeting with bound edges, an adjustable height cocktail table, and curved frame-less windows with blinds.

The interior woodwork and cabinetry is all teak and burl.

Accommodations

The Grand Harbour 66 is quite unique in a yacht of this size in that it boasts Four Spacious Cabins each with its own Bath. The forward staterooms are accessed via a stairway forward on the main deck level to a teak and holly soled landing. Immediately forward to starboard is a day head which serves a dual purpose as the 3rd Guest stateroom bath which can be entered through a private door from the 3rd Stateroom located on the starboard side. Going Aft is the Full Beam Master and forward in the bow is the VIP Stateroom. The 4th Guest Stateroom, (or Crews Quarters) is accessed from the stern platform through a quick acting water tight door. This is also the entrance to the engine room.

MASTER; Full beam amidships, the master stateroom features a California King bed,(68"wide), 3 large oval ports on either side, a vanity with make-up mirror, a desk, full entertainment electronics, cedar lined closets, Berber style carpet with bound edges and beautifully detailed teak and burl cabinetry.

VIP; Centertline Oversized Queen Berth,(63" wide), an overhead hatch to the foredeck, portlights port and starboard, full entertainment electronics, cedar lined closets, Berber style carpet with bound edges and beautifully detailed teak and burl cabinetry.

3rd Guest; Forward of the Master to Starboard, the third guest stateroom features a Full Size Berth, (54" wide), a private entrance to the day head and shower,Portlight for natural light,full entertainment electronics, cedar lined closets, Berber style carpet with bound edges and beautifully detailed teak and burl cabinetry.

4th Guest or Crew; Aft of the engine room and accessed from the stern, the fourth stateroom has a private galley with U-line Refrigerator/Freezer, 2 burner glass Cooktop with Stainless Steel

fiddles, Large Stainless Steel Sink, GE Profile Microwave, Six large storage drawers, Very large closet/pantry, and a stacked washer/dryer. The space features a teak and holly sole and beautifully detailed teak and burl cabinetry. The Stateroom is to port with a Queen Size Berth, (60" wide), full entertainment electronics, several storage cabinets outboard the berth, cedar lined closet, and private entrance to the 4th Bath. There is a second entrance to the 4th Bath from immediately outside the engine room door.

All of the Baths feature a Jade Corian Vanity, Chrome Hardware, and each has an opening Portlight for Natural Ventilation.

Galley

The galley is forward to starboard of the main salon and is on the same deck level as the lower helm and dinette. The galley features full size GE Appliances, Corian Countertops, Stainless Steel Double Sinks, Six storage cabinets and eight drawers, as well as a teak and holly flooring.

Fisher & Paykel Dish Drawer Dishwasher

GE 4 Burner Glass Cooktop with Stainless Steel Fiddles

GE Profile Microwave with Vent Fan over Cooktop

GE Full Size Refrigerator and Freezer with Icemaker

Separate Filtered Drinking Water Faucet with Instahot Hot Water

(2) 110 volt GFIC Electrical Outlets

Lower Helm

The lower helm is all the way forward to starboard and has a pantograph door with stainless steel framing and hardware going out to the starboard deck. There are double bench seats for helmsman and companion with storage beneath. The main electrical panels for both AC and DC circuit breakers are located close at hand as well as the Navigational Electronics breaker panel which is immediately to the left of the helm. Remote start/stop control panels for both generators are located here as well. The floor in the lower helm and dinette area is teak and holly. All the Navigation Electronics are redundant at the flybridge helm.

Caterpillar Electronic Displays for main engines

Trolling Valves (Slow Speed Engine Controls)

Morse Electronic Engine Controls

Sidepower Bow and Stern Thruster Controls

Raymarine E120 Multi-function Chart Plotter with Radar

Raymarine Smart Pilot Autopilot

Raymarine Depthsounder

Furuno VHF with DSC

ACR Spotlight remote control panel

Hynautic Trim Tab Controls

VDO Rudder Angle Indicator

Maxwell Remote Windlass Control

Variable Speed Windshield Wipers

Fly Bridge Helm

The Fly bridge Helm has a double bench seat and all the Navigation Electronics are redundant at the lower helm.

Caterpillar Electronic Displays for main engines

Trolling Valves (Slow Speed Engine Controls)

Morse Electronic Engine Controls

Sidewater Bow and Stern Thruster Controls

Raymarine E120 Multi-function Chart Plotter with Radar

Raymarine Smart Pilot Autopilot

Raymarine Depthsounder

Furuno VHF with DSC

ACR Spotlight remote control panel

Hynautic Trim Tab Controls

VDO Rudder Angle Indicator

Maxwell Remote Windlass Control

Fly Bridge

The Flybridge can be accessed from the aft deck up a companionway stairs with sliding glass hatch, or from the main salon level up a spiral stairway. The helm is all the way forward with a double bench seat, and to starboard is a large, (12'), seating area with tan and beige Sunbrella Upholstery. There is a 36" square dining table at the aft end of the seating area. To port is a storage cabinet with Jennaire 2 section Grill and stainless steel sink on top and a Panasonic Beverage Refrigerator with Ice trays below. The Bimini Sunshade has a very substantial 1 1/4" framing as does the windscreen.

Aft is the boat deck which features:

1200 lb. Power Systems Davit

Tender Chocks

Stainless Steel Bike Rack (2)

Stainless Steel Kayak Mount

Stainless Steel Liferaft Mount for Revere 6 man liferaft

Deck

The aft deck of the 66' Grand Harbour has teak decking which goes up the port and starboard walk-around about 1/4 of the way to the bow. The bow and side decks are molded non-skid gelcoat. The stairs on port and starboard going down to the swim platform have teak decking as does the swim platform.

All of the deck areas have raised bulwarks and substantial 1 1/4" Stainless Steel Railings on top. The aft deck bulwark is 24" high and with the railing brings the total height to 32". The midship bulwarks are 14" high with a total height to the top of the railings being 38". The foredeck bulwark is 5 1/2" high for a total height of 32". The walk-around decks are 17" wide. This makes for a very safe and easily traversed deck in most sea conditions.

There are removable railings around the swim platform which provide added security when entering the aft cabin and engine room while underway.

All of the railings are substantial 1 1/4" Stainless Steel and all of the cleats, roller chocks, anchor roller, and other deck hardware are very well made.

There is a Besenzoni Pasarelle on the port side stairway to the aft deck which allows for Mediterranean style mooring and the Glendenning Cablemaster Shore Power Cord is located on the port side of the transom as well.

There is a second 50 Amp 240Volt Shore Power Connection as well as Marinco Telephone and

TV connections On the port side transom

There is a hot and cold fresh water shower at the swim platform.

At the bow is the Stainless Steel Anchor Roller with Stainless Chain Stopper, Maxwell 2500 electric Windlass and Stainless Steel Plow type Anchor.

Electrical

Northern Lights 20kw Generator with 1104 hrs.

Mase 4kw Generator with 334 hrs.

50 Amp Shore Power on Glendenning Cablemaster with separate breaker

50 Amp Marinco Shore Power connection on separate breaker

(2) Charles C-Power Marine Isolation Booster Transformers

Charles 80 Amp Charger

Mastervolt 3 bank Battery Charger

Xantrex Inverter

Engine Room

The Engine Room is accessed going forward in the Crews Quarters (4th Guest Stateroom) through a dogging type door and features Diamond Plate Flooring, Full Sound Insulation, and excellent access to both the Main Engines and Both Generators. There is both AC and DC lighting, and the space is protected by a Fireboy Manual/ Auto FE 241 fire suppression system. All engines/generators have dual Racor Filters, and Stainless Steel Fuel Manifold. There is a large 6 drawer Toolchest. There are Five Split System Air Conditioning Compressors mounted outboard which are easily accessed for maintenance. The space is monitored from the helm with a camera system which has a second camera mounted on the aft deck to see astern of the vessel. The Main Engines have ZF Transmissions.

Исключения

При продаже яхты исключаются личные вещи владельца.

Отказ от ответственности

Компания предоставляет описание судна или яхты добросовестно, но не может гарантировать точность этой информации, а также не ручается за техническое состояние. Покупатель должен проинструктировать своих агентов или оценщиков исследовать представленную информацию более подробно, по собственному желанию. Продажа судна или яхты, изменение цены или снятие с продажи будет происходить без предварительного уведомления.

ФОТОГРАФИИ













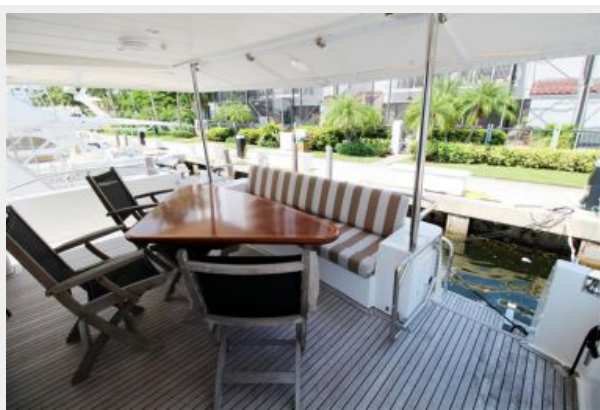
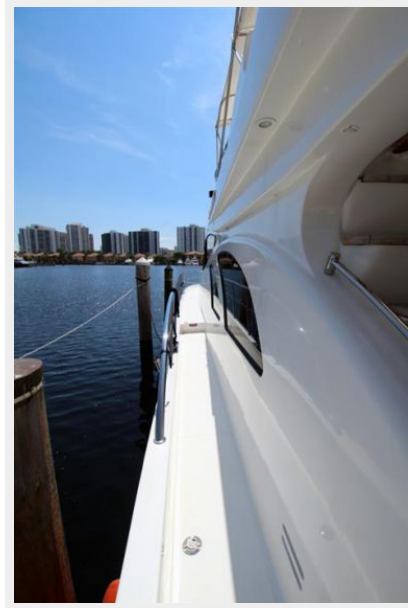
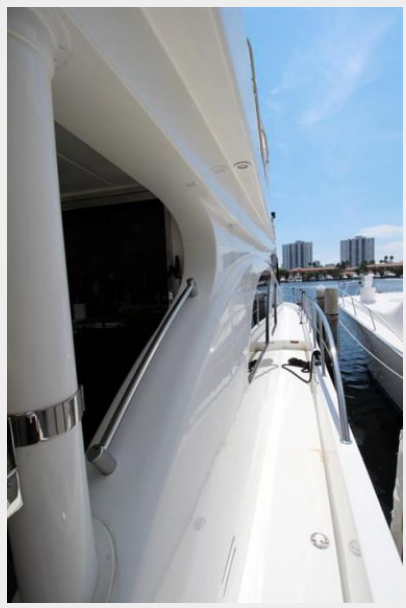
















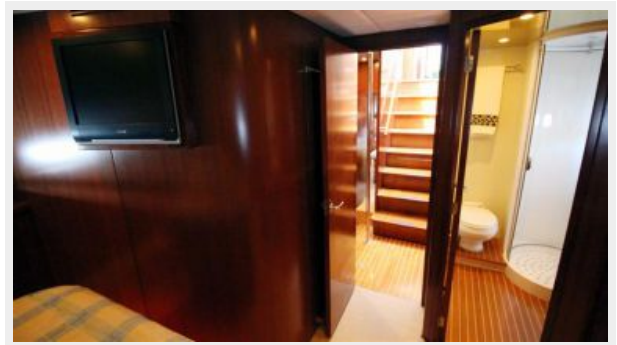


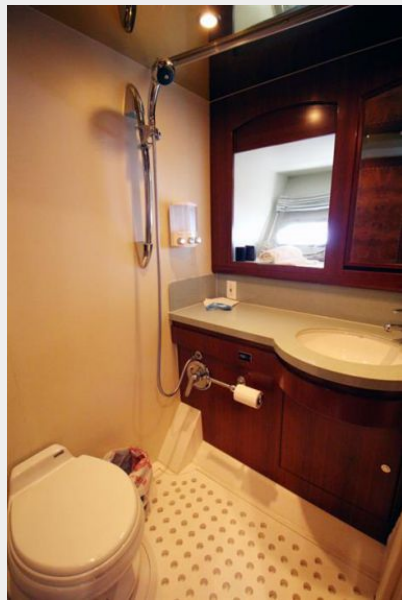
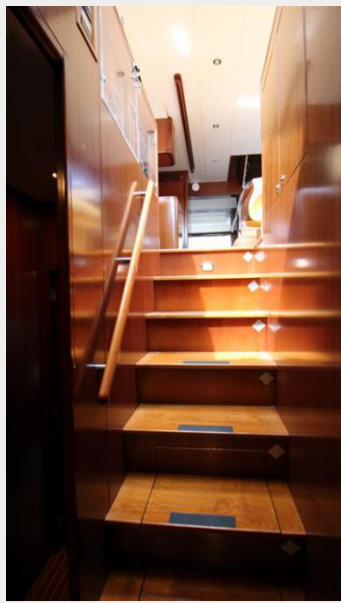














NEW UPHOLSTERY COLOR

NEW UPHOLSTERY COLOR



NEW UPHOLSTERY COLOR



КОНТАКТЫ

Андрей Шестаков (Andrey Shestakov) – ведущий яхтенный брокер отдела продаж яхт и судов компании Shestakov Yacht Sales Inc. Официальный представитель Shestakov Yacht Sales Inc. для русскоговорящих клиентов в центральном офисе компании в Майами/Форт Лодердейл/Флорида/США.

Контактная информация

Email: andrey@shestakovyachtsales.com

Web: shestakovyachtsales.com

Телефоны

Краснодарский край: **+7(918)465-66-44**

США, Майами, Флорида: **+1(954)274-4435**

Время работы

Понедельник – Суббота: **9:00 - 21:00**
EDT

Воскресенье: **Закрето**

Адрес



Harbour Towne Marina, 850 NE 3rd St,
STE 213, Dania, FL 33004