

## GOODLIFE — PACIFIC MARINER



**Судостроитель:** PACIFIC MARINER

**Год постройки:** 2009

**Модель:** Моторная яхта

**Цена:** **ЦЕНА ЯХТЫ ПО ЗАПРОСУ**

**Местонахождение:** United States

**Длина общая:** 85' 0" (25.91m)

**Ширина:** 21' 3" (6.48m)

**Мин. осадка:** 5' 0" (1.52m)

**Макс. осадка:** 5' 0" (1.52m)

**Крейс. скорость:** 20 Kts. (23 MPH)

**Макс. скорость:** 25 Kts. (29 MPH)

Купить **GOODLIFE — PACIFIC MARINER** а также выбрать подходящую вам яхту из нашего каталога яхт вам поможет опытный яхтенный брокер Андрей Шестаков. На сегодняшний день компания **Shestakov Yacht Sales Inc.** имеет большое количество яхт в собственном списке продаж, а также тесно сотрудничает со всеми крупными яхтенными производителями по всему миру.

Для того чтобы купить яхту **GOODLIFE — PACIFIC MARINER** а также проконсультироваться по любому вопросу связанному с покупкой, продажей, чартером яхт позвоните по телефону **+7(918)465-66-44**.

# ОГЛАВЛЕНИЕ

---

ОГЛАВЛЕНИЕ	2
ХАРАКТЕРИСТИКИ	5
Обзор	5
Основная информация	5
Размеры	6
Скорость, вместимость и масса	6
Размещение	6
Корпус и палуба	6
Информация о двигателе	6
ПОДРОБНОЕ ОПИСАНИЕ	7
VESSEL WALKTHROUGH	7
NOTABLE RECENT UPDATES IN 2015	7
SALON	8
DINING	9
GALLEY	9
DAY HEAD	10
PILOTHOUSE	10
MASTER STATEROOM	11
MASTER HEAD	12
MASTER STATEROOM COMPANIONWAY	13
VIP STATEROOM (FORWARD)	13
VIP HEAD (FORWARD)	14
VIP STATEROOM (STARBOARD)	15
VIP HEAD (STARBOARD)	16
GUEST TWIN STATEROOM (PORT)	16
GUEST HEAD (PORT)	17
CAPTAINS QUARTERS (AFT)	17
CREW QUARTERS (AFT)	18

CREW HEAD (AFT)	18
FLYBRIDGE	19
NAVIGATION ELECTRONICS	21
ELECTRICAL SYSTEM	22
SOUND SUPPRESSION	24
CONSTRUCTION STANDARDS	24
SWIM PLATFORM	25
MECHANICAL/ENGINE ROOM	25
AFT DECK	26
EXCLUSIONS	26
Disclaimer	27
Исключения	27
Отказ от ответственности	27
<b>ФОТОГРАФИИ</b>	<b>28</b>
Galley	28
Salon	28
Helm	28
Master stateroom	28
Salon	28
Salon	28
Dinette	29
Dining room	29
Master Stateroom	29
Master Stateroom	29
Master head	29
Master head	29
Guest stateroom starboard	30
Guest stateroom twin	30
Day head	30

Head	30
Laundry	31
Bridge Helm	31
Bridge	31
Bridge	31
Deck dining	31
Aft Deck	31
Bridge deck	32
Bridge deck looking forward	32
Transom night BLUE	32
Deck with Jacuzzi and tender	32
Transom night WHITE	32
Engine room	32
Profile	33
Profile	33
Profile	33
<b>КОНТАКТЫ</b>	<b>34</b>
Контактная информация	34
Телефоны	34
Время работы	34
Адрес	34

# ХАРАКТЕРИСТИКИ

## Обзор

GOODLIFE is hull #15 of the extremely popular Pacific Mariner 85' Motor Yacht (By Westport). GOODLIFE features an extremely comfortable 4 stateroom layout. The private master stateroom is full beam and located aft. The oversized master bath features a jacuzzi tub, large glass shower, and bidet. Forward you will find three staterooms all with ensuite heads. Two VIP staterooms feature queen sized beds, and a third stateroom with twin beds and a pullman. This stateroom can also be converted to a full size bed if needed. The lower helm, oversized dinette, and fully functional galley provide a great informal atmosphere while underway. The salon features a great entertainment center, custom granite bar, stairway access to the master stateroom, a formal dining table, and a built in lighted china cabinet. The aft deck and fly bridge provide a much larger feel than a boat of this size. The fly bridge has a custom Copper bar that is stunning, comfortable seating, and yes a hot tub on deck as well. GOODLIFE is powered by MTU 10V2000CRM93 engines with extended warranties. Full services were in complete in June of 2015 which included mechanical services to the mains and gens as well as new bottom paint. Other notable items in 2015 include new fly bridge dual unit air conditioning, new full flybridge enclosure, and the SAT TV was replaced with the new KVH HD-7 and new receivers throughout. GOODLIFE is in turnkey condition and will not disappoint. Potential late model quality motor yachts in the 60' range would be consider on trade. GOODLIFE will be on display at the 2015 Ft. Lauderdale boat show.

Holding in suit with her roots at Westport with what similar yacht builders offer in the 100'+ market, the 85 Pacific Mariner GOODLIFE captures similar amenities and livable volume at a lower operating cost. GOODLIFE features an award winning interior with a gorgeous satin wood package, high end granite, and marble finishes throughout. GOODLIFE is unrivaled in her class for entertaining on a grand scale as well as the perfect platform for the seasoned Yachtsman that wants to cruise extensively.

## Основная информация

**Тип судна:** Моторная яхта

**Подкатегория:** Flybridge

**Модельный год:** 2009

**Год постройки:** 2009

**Страна:** United States

**Верх:** Hardtop

**Открытая палуба мостика:** Да

## Размеры

Длина общая: 85' 0" (25.91m)

Ширина: 21' 3" (6.48m)

Мин. осадка: 5' 0" (1.52m)

Макс. осадка: 5' 0" (1.52m)

## Скорость, вместимость и масса

Крейс. скорость: 20 Kts. (23 MPH)

Макс. скорость: 25 Kts. (29 MPH)

Водоизмещение: 125000 Pounds

Чистый вес: 117 Pounds

Вместимость воды: 425 Gallons

Вместимость сточного бака: 200 Gallons

Объем топливного бака: 2320 Gallons

## Размещение

Всего кают: 4

Спальные места: 9

Всего ком. состава: 5

Койки экипажа: 2

Спальных мест экипажа: 4

Комм. состав экипажа: 1

## Корпус и палуба

Материал корпуса: Fiberglass

Материал палубы: Fiberglass

Комплектация корпуса: Semi Vee

Цвет корпуса: White

## Информация о двигателе

Двигатели: 2

Производитель: MTU

Модель: 10V2000M93

Тип двигателя: Inboard

Тип топлива: Diesel

---

# ПОДРОБНОЕ ОПИСАНИЕ

---

## VESSEL WALKTHROUGH

---

"GOODLIFE" features a four stateroom, plus aft crew arrangement with a separate master stateroom accessed from the main salon. The 85 Mariner's success in the marketplace is also attributed to a large aft deck and fly bridge, walk-around access, and incredible sea keeping ability. The salon features a comfortable L-shaped settee with 2 occasional chairs, home theater system, and a large formal dining area forward. The pilothouse arrangement places both upper and lower helm stations on centerline for exceptional visibility. Port and starboard pilothouse doors ensure easy access to side decks. The galley and day head are located at pilothouse aft of the forward-facing dining settee. This dinette arrangement allows everyone to enjoy the cruise together. The full-beam private master cabin is accessed by a separate staircase from the main salon. Forward, there are two VIP cabins plus a twin bed cabin accessed from the pilothouse stairway. All of these cabins feature en-suite heads.

## NOTABLE RECENT UPDATES IN 2015

---

- Purchased MTU Extended Propulsion Coverage
- Installed new KVH HD7 Satellite TV system throughout the vessel
- Installed new 46" LCD TV on the fly bridge
- Installed new 40" LCD TV at the lower helm
- Installed new 20" LCD TV in the VIP stateroom
- Installed Apple Airplay audio
- Installed new Polycarbonate fly bridge enclosure
- Installed new fly bridge dual air conditioning system
- Installed new Blue/White exterior LED lighting
- Installed new audio controller and speakers on the bow deck
- Updated crew area carpet and wallpaper
- Applied UV window protection
- Installed custom lighted transom name (White/Blue)
- Engine/Generator services completed 6/2015

---

Bottom paint renewed 6/2015

## SALON

---

Mahogany cabinetry, satin finish

Custom L-shaped sofa with storage drawers

Large drawers under sofa

Custom ottoman with storage below

Occasional chairs (2)

Stainless steel framed sliding door to aft deck w/retractable screen

Windows, tinted, tempered safety glass

Custom Hunter Douglas Silhouette window blinds

Wet bar with Granite countertop

Wine cooler

Icemaker

Stainless steel sink

Accent lighting

Digital room temperature control

LED lighting with dimmer

Panasonic telephone system

Art lights with dimmer

Central vacuum

Home Theater System

58" Samsung LED 3D TV

KVH HD7 Satellite TV and receivers throughout (New 2015)

Apple Airplay audio system

Audio/video control receiver



DVD player

Surround sound speaker system with sub-woofer

Music and video stereo system

Apple TV

XM Radio

Nintendo Wii

## **DINING**

---

Custom glass table and eight chairs

Lighted buffet with china & crystal storage

Accent lighting

(12) Place settings for china, silverware & crystal

LED lighting with dimmer

Custom chandelier

## **GALLEY**

---

GE Profile stainless steel full-size range with convection oven

GE Profile side-by-side refrigerator with ice/water dispenser

U-Line under counter refrigerator

Kitchen Aid compactor

GE Microwave

Double stainless steel sink

Grohe single lever faucet, On-Demand hot water

Disposal

Granite countertop

Lazy Susan

Digital room temperature control

Hunter Douglas custom window blinds

LED lighting

Accent lighting

Satin finish Mahogany cabinets

Amtico custom flooring

## DAY HEAD

---

Designer wall coverings

Marble tile flooring

Vanity with sink and marble countertop

On-demand hot water

Headhunter marine toilet system

Grohe faucet

Mirror

Air conditioning outlet

Powered ventilation

LED lighting

## PILOTHOUSE

---

Electronic room heater, 240VAC, 750WattDOMETIC 220 VAC defroster in pilothouse console

12V USB Power outlet

Teleflex SeaStar power-assisted hydraulic steering

Wood-trimmed stainless steel steering destroyer wheel

(1) Stidd helm and companion chairs

Freeman sliding pantograph doors port and starboard

Chart light with red lens

(3) Chart drawers

Fabrica luxury carpeting overlay

LED lighting with dimmer

Stairway to lower level accommodations

Stairway to fly bridge from galley

Raised settee with designer fabrics & built-in drawer storage

Custom table

Digital room temperature control

Distributed audio with volume control

Stereo speakers connected to main system with volume control

Tempered windshield glass with frameless flush design

Window shades

Heavy duty windshield wiper/washer with intermittent operation

Windshield defog system

Windshield cover

Smoke detector

---

## **MASTER STATEROOM**

---

King-size berth, latex mattress

Furuno RD30 digital depth sounder repeater

Telephone

(2) Telephone outlet

(2) Cedar-lined lighted hanging lockers

Digital room temperature control

Electric room heater, 220VAC, 750Watt

LED lighting with dimmer

Accent lighting

(2) Reading lights

(4) Opening port lights with screens

Custom Hunter Douglas blinds

Smoke detector

Large full-beam suite with private entry

Custom ceiling overhead

Nightstands with light switches and drawer storage

Designer spread & throw pillows 32" LCD Flat screen TV with DVD and DSS receiver

Distributed audio w/volume control

Built-in settee port

Built- in dresser starboard

Custom desk with bookshelves, storage and chair

Apple TV

Custom Universal remote

Surround sound

## **MASTER HEAD**

---

Marble countertop with (2) sinks

Marble tile flooring

Distributed audio with volume control

Grohe dual-lever faucets

On-demand hot water

Headhunter Royal Flush marine toilet system

Towel storage cabinet

Whirlpool 5 Ft. jetted tub

Shower enclosure with safety-glass surround

Pressure balanced shower valve, Grohe with handheld sprayer

Tempered glass shower door

Grohe accessories, chrome and gold finish

Mirrored vanity with storage

Full-length mirror on door

AC outlet, GFCI protected

Powered ventilation

LED lighting, 24 VDC

Opening port light with screen

Custom Hunter Douglas blinds

Bidet

Speed Queen commercial stackable washer/dryer

Storage Cabinet

---

## **MASTER STATEROOM COMPANIONWAY**

---

Full size stacked clothes washer and dryer

Courtesy step lighting

---

## **VIP STATEROOM (FORWARD)**

---

Queen sized berth, innerspring pillow-top mattress

Designer bed spread and throw pillows

(2) Sets of deluxe linens

Built-in drawers under berth

20" LCD Flat screen TV

Combo DVD/VCR

DSS receiver

Distributed audio system with volume control

Cedar-lined hanging locker

Accent lighting

(2) Swing arm reading lights

Telephone

Digital room temperature control

Electric room heater, 240VAC, 750 Watt

Ventilation hatch above berth with screen and privacy cover

(2) Opening port lights w/screens

Custom Hunter Douglas blinds

Smoke detector

LED lighting

Apple TV

Custom universal remote

## **VIP HEAD (FORWARD)**

---

Marble counter top with Kohler sink

Marble tile flooring

Grohe faucet

On-demand hot water

Headhunter Royal Flush marine toilet system

Shower with safety-glass door

Pressure balanced shower valve

Mirrored vanity with storage

Powered ventilation Air Conditioning outlet

LED lighting

(2) Premium towel sets

## VIP STATEROOM (STARBOARD)

---

Queen size berth, innerspring pillow-top mattress

Designer bed spread & throw pillows

(2) Sets of deluxe linens

Built-in drawers under berth

19" LCD flat screen TV

DVD

DSS receiver

Distributed audio & volume control

Cedar-lined lighted hanging locker

LED lighting

Accent lighting

(2) Swing arm reading lights

Telephone

Digital room temperature control

Electric room heater, 240VAC, 750 Watt

(2) Opening port lights w/screens

Custom Hunter Douglas blinds

Smoke detector

Apple TV/custom remote

---

## VIP HEAD (STARBOARD)

---

Marble counter top with Kohler sink

Marble tile flooring

Grohe faucet

Headhunter Royal Flush marine toilet system

Shower with safety glass door

Pressure balanced shower valve

Mirrored vanity with storage

Powered ventilation

Air conditioning outlet

LED lighting

(2) Premium towel sets

Opening port light with screen

---

## GUEST TWIN STATEROOM (PORT)

---

Twin berths with latex pillow top mattress (push together to make queen bed with insert)

Pullman berth

Custom designer bed spread and throw pillows

(2) Sets of deluxe sheets

19" LCD Flat screen TV

Combo DVD

DSS receiver

Distributed audio w/volume control

Cedar-lined, lighted hanging locker

Built-in drawers under berths

LED lighting



Accent lighting (2) Reading lights

Digital room temperature control

Opening port light with screen

Custom Hunter Douglas blinds

Smoke detector

Apple TV

Custom universal remote

## **GUEST HEAD (PORT)**

---

Marble counter top with Kohler sink

Marble tile flooring

Grohe faucet

Headhunter Jet-type marine toilet system

Shower with safety glass door

Pressure balanced shower valve

Mirrored vanity with storage

Powered ventilation

Air conditioning outlet

LED lighting

(2) Premium towel sets

Opening port light with screen

## **CAPTAINS QUARTERS (AFT)**

---

Queen size berth, innerspring pillow-top mattress

Fabrica carpets

TV with DVD/DSS receiver

Designer bed spread & throw pillows

Built-in drawers under berth

Cedar-lined, lighted hanging locker

LED lighting

Reading light

Opening port light with screen

Custom Hunter Douglas blinds

Furuno Navnet 3D

Apple TV

---

## **CREW QUARTERS (AFT)**

---

Custom bunks with storage and cabinetry

Fabrica carpets

Sub-Zero refrigerator

Domestic EI250 chipped ice machine

GE 17 Cu. Ft. Freezer

Digital room temperature control

Furuno digital depth sounder repeater

15" LCD Flat screen TV, DVD and DSS receiver

Distributed audio system with volume control

Apple TV

---

## **CREW HEAD (AFT)**

---

Shower

Vanity with Corian counter, sink, mirror and storage

Headhunter marine toilet system with 17 gal. holding tank

Holding tank level indicator

Part storage cabinet

Access to engine room

Main AC panel

ICOM VHF Radio Command Mic III

System monitors

Amico luxury vinyl flooring

Custom floor hatches

## **FLYBRIDGE**

---

Fully equipped control station

MTU instruments

MTU controls

Docking stations (port & starboard) with MTU control head & bow thruster controls

Premium electronic package

Furuno Navnet repeaters

Autopilot remote

Chart Plotter

ICOM M602 VHF radio

ICOM Command Mic III

Bow thruster control

Furuno RD30 digital depth and speed gauges

Ritchie 5" magnetic compass

---

Distributed audio system with volume control

Propane stainless steel XL BBQ grill

U-Line refrigerator

Sink with single lever copper faucet

(2) Stidd helm & companion seats

Stainless steel steering wheel

Hydraulic steering, Teleflex Seastar, power assisted

Custom curved windshield with stainless steel frame

1700 Lb. Nautical Structures hydraulic davit with power booming and rotation

Upholstered settee starboard with storage below

Custom high gloss Teak table

Stainless steel handrails

Antenna arch

Tungsten Halogen floodlights

Courtesy lighting

Stairs to pilothouse

Stairs to aft deck

Companionway cover

Canvas cover

Switlik life raft (10) person RE-CERTIFIED 10/2015

Hot tub, Jacuzzi spa

Fiberglass Hardtop

Copper finished custom bar

Teak decking forward

U-Line ice maker

Custom 15' Novurania wide body with 90hp Yamaha

## NAVIGATION ELECTRONICS

---

MTU Electronic engine instruments

MTU Electronic controls with back-up system

Ships computer with Nobeltec VNS (Visual Navigation Suite)

XM weather

Furuno Navnet 3D black box system

(3) 19" Greemarine monitors at lower helm

Furuno Navnet MFDBB digital HD 72nm radar with dual range display and ARPA radar repeated on fly bridge with 6' scanner array

Furuno Navnet DFF1 digital color sounder display on Navnet system

Furuno Navnet C-map plotter with GPS

Furuno GP37 GPS and Navnet Black box

Three (3) Furuno Navnet 3D MFD12 monitors on fly bridge

Furuno Navnet MFD8 in Captain's cabin

Furuno RD30 system displays wind speed/direction, depth and vessel speed on instruments in the pilothouse, fly bridge, crew and master stateroom. Sensors include PB100 solid state weather sensor with GPS and Smart depth/speed transducer

Kahlenberg dual trumpet air horns

Touch screen ship's systems monitor

ICOM M604 VHF radio in pilothouse, fly bridge and one command mic in crew quarters

ICOM 504 on the bridge

SIMRAD AP28 in pilothouse and AP24 on fly bridge. Wireless remote with connections at both stations

Naiad stabilizers with Datum Control head

Naiad bow thruster control

Ritchie Globe Master FB500 on pilothouse and fly bridge

Elbex (4) 12 VDC hi- resolution color, pan/tilt cameras on the exterior and pan/tilt camera in the

engine room

Generator control panels

Manual fire-suppression pull handle

AC Distribution panel

ACR Spotlight

KVH® V3 VSAT with VOIP

Panasonic 8-station digital phone system. All stations have speaker phones for intercom and paging. Phone system is connected to Satellite, Cell and Shore Phones for voice lines throughout. Port and Starboard shore connection is provided aft with a 50 ft. combo Telephone/CATV shore cord.

Hewlett Packard printer/fax

KVH HD7 satellite TV system; (9) satellite receivers: salon, aft deck, galley, master stateroom, VIP stateroom, port and starboard guest staterooms, captain and crew (NEW 2015)

Internet connectivity thru Wave Wi-Fi receiver/router

Telular GSM cellular phone system. Antenna on mast, 12 VDC amplifier

Classic Nobletec VNS 11

WX Weather Worx

AIS FA 50

(2) Apple airport Wi-Fi base stations

Custom built Nav computer with solid state hard drive

Custom house computer with internet distribution and movie database

---

## ELECTRICAL SYSTEM

---

Two (2) 1800 rpm Northern Lights 240VAC single phase generators: 30kw with 5200 hours and 25kw with 2515 hours as of 10/6/2015.

(2) 100 Amp - 240VAC single phase shore power feeds

(2) Glendenning Cable Master cord reels with 75' cords

Charles ISO Boost shore power inverters

Distribution panels are fitted with magnetic breakers, backlit labels with LED indicator lights in pilothouse.

Main distribution panel is located in crew area. Functional split buss design, with flexible AC source selection and power management

AGM Type batteries. Two banks of 8-D batteries wired in series for starting main engines (total of two), (8) for ship's service, (1) GRP 27 per generator starting

Heavy duty battery switches with paralleling switch

Battery Chargers include two 100 amp 24 VDC for ship's service and engine start batteries, one 120A built into inverter for ships service and one 25-amp 12 VDC for generator batteries

Heavy duty battery switches

5000 Watt inverter with built in 120A smart charger. Supplies power to all entertainment equipment, refrigerators, microwaves and strategic outlets allowing quiet ship operation

MasterVolt combi unit 12 Volt system provides power to 12VDC equipment

DC to DC converter, distribution panel with volt and amperage gauges.

Bonding system

24 VDC LED engine room lighting

24 VDC LED navigation lights

24 VDC bilge pumps with float switches - Jabsco 34600

110 VAC auxiliary bilge pump with manifold system

Telephone and CATV inlet with 50' cable

Courtesy lighting

Battery paralleling switch

(10) 8D gel cell batteries; (2) starting, (8) house - Surette Rolls AGM

(2) GRP 27 AGM batteries for generators - Surette Rolls AGM

Wiring, tinned copper with labels

Receptacles, 120 VAC GF-CI all protected

Underwater lights (4), multi 7 color LED

---

## SOUND SUPPRESSION

---

Underwater engine exhaust with vectored cowl by DeAngelo exhaust

Underwater discharge air conditioning system

High density foam cored engine beds

Soundown double density sound foam with barrier in engine room

3M Thinsulate insulation in living areas

Sound deadening tiles in strategic locations

Inline silencers on air conditioning ducts

Generator sound shields with sound attenuation kits

All pumps and motors installed on isolation mounts

Lift mufflers and separators on generators with underwater discharge

Generators installed on double isolation mounts

Insulation on engine mufflers

Sound absorbing pads under carpets

---

## CONSTRUCTION STANDARDS

---

Vinylester resin barrier coat

UV resistant white gel coat

Composite cored hull bottom and topsides

One piece fully cored unitized deck

Cored fiberglass stringers

(5) Composite structural bulkheads

Epoxy barrier coat, Interprotect 2000-E

Anti-fouling paint, RENEWED 6/2015

Prop Speed on shafts, props and rudders



---

## SWIM PLATFORM

---

(2) 10" Pop-up stainless steel cleats

Stainless steel staple rails, removable

Hot & Cold shower

Stairways to aft deck

Freeman watertight door to crew quarters

Storage locker

Swim ladder, retractable

---

## MECHANICAL/ENGINE ROOM

---

(2) MTU common Rail 10V2000CRM93-series engines, rated at 1,500 hp each – 2625 hours as of 10/5/2015. With extended warranty coverage.

Smartline electronic controls and displays

Trolling valves

Underwater exhaust

Two (2) 1800 rpm Northern Lights Generators with double compound mounts. Both generators have remote start/stop in Pilothouse

25kw Generator with 2515 hours as of 10/15/2014

30kw Generator with 5200 hours as of 10/15/2014

PTO and hydraulic pump installed on the Starboard generator for bow thruster

Naiad 38HP hydraulic bow thruster with five station controls

Naiad model #302 with 9 sp. ft. fins, (1) Datum Digital Adaptive Stabilizer control on Fly bridge and (2) Pilothouse LCD control panel with fin position icons, sensitivity controls, and individual function screens with context sensitive push buttons

Twin compressor 48,000 BTU chilled water air conditioning system with heat and soft-start

Vessel equipped with 18,000 BTU, make up air system that replaces vessel's air twice an hour

2,320 US gallons fuel tanks with sight gauges

## AFT DECK

---

Side boarding gates

Teak decks

Aft Deck bar with refrigerator, sink, ice maker and Granite top

(5) High gloss Teak arm chairs

Docking station, (starboard side) with MTU control head and bow thruster control

Upholstered aft settee with Sunbrella fabric

Custom high gloss Teak table

22" LCD TV in protected compartment

Access to crew quarters

Spiral staircase to fly bridge

(2) Lewmar aft warping capstans port & starboard

Shore power cords, port & starboard

CATV and phone inlet with cord

Courtesy lighting

LED exterior dual color (Blue/White) overhead lighting NEW 2015

Fresh water wash down

Dockside water inlet

Manual fire-suppression pull handle

New Wave boarding ladder

## EXCLUSIONS

---

The owner's and crew's personal belongings; a detailed list will be provided at the time of sale, upon request.

---

## Disclaimer

---

The Company offers the details of this vessel in good faith but cannot guarantee or warrant the accuracy of this information nor warrant the condition of the vessel. A buyer should instruct his agents, or his surveyors, to investigate such details as the buyer desires validated. This vessel is offered subject to prior sale, price change, or withdrawal without notice.

---

## Исключения

---

При продаже яхты исключаются личные вещи владельца.

---

## Отказ от ответственности

---

Компания предоставляет описание судна или яхты добросовестно, но не может гарантировать точность этой информации, а также не ручается за техническое состояние. Покупатель должен проинструктировать своих агентов или оценщиков исследовать представленную информацию более подробно, по собственному желанию. Продажа судна или яхты, изменение цены или снятие с продажи будет происходить без предварительного уведомления.

# ФОТОГРАФИИ

Salon



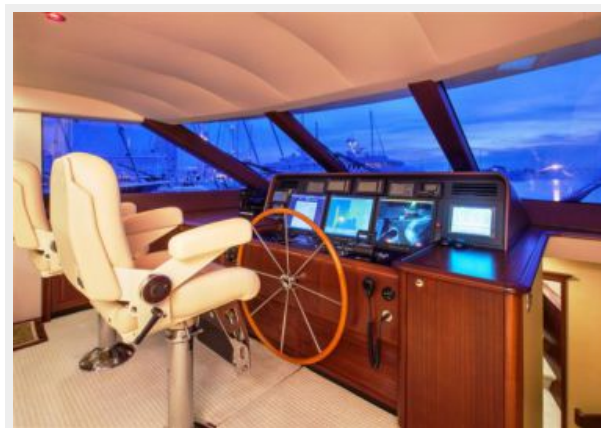
Galley



Master stateroom



Helm



Salon



Salon



**Dinette**



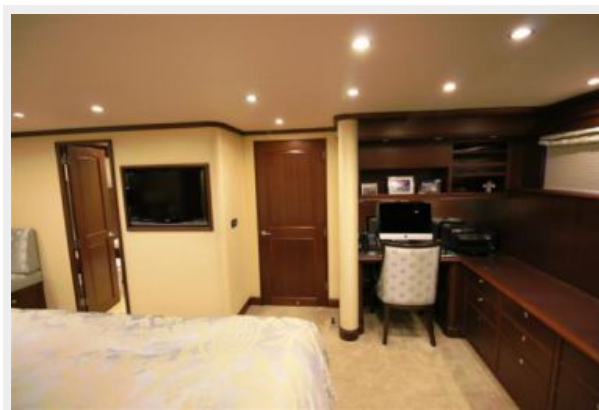
**Dining room**



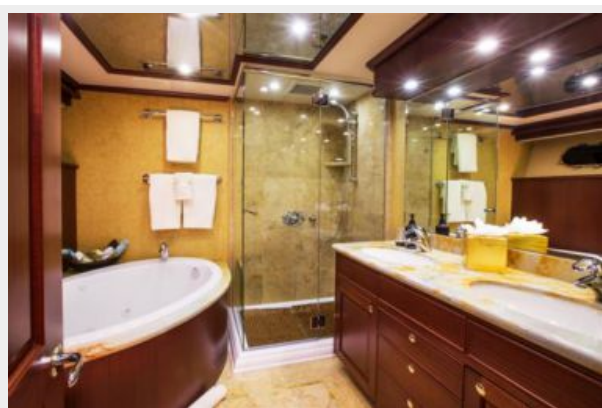
**Master Stateroom**



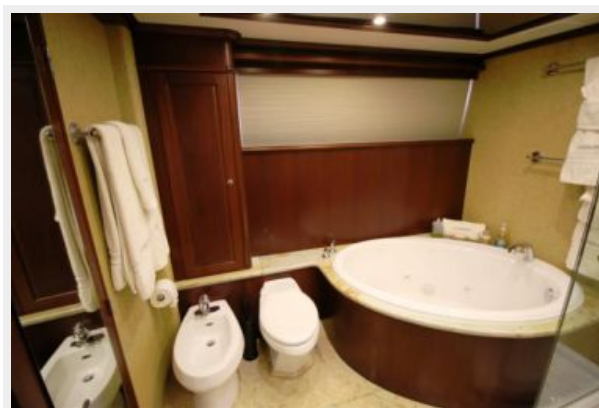
**Master Stateroom**



**Master head**



**Master head**



**Guest stateroom starboard**



**Guest stateroom twin**



**Day head**



**Head**



**Laundry**



**Bridge Helm**



**Bridge**



**Bridge**



**Aft Deck**



**Deck dining**



**Bridge deck**



**Bridge deck looking forward**



**Deck with Jacuzzi and tender**



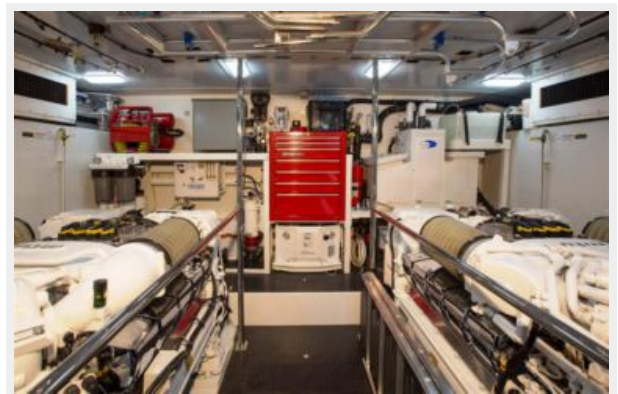
**Transom night BLUE**



**Transom night WHITE**



**Engine room**





**Profile**



**Profile**



**Profile**



# КОНТАКТЫ

---

Андрей Шестаков (Andrey Shestakov) – ведущий яхтенный брокер отдела продаж яхт и судов компании Shestakov Yacht Sales Inc. Официальный представитель Shestakov Yacht Sales Inc. для русскоговорящих клиентов в центральном офисе компании в Майами/Форт Лодердейл/Флорида/США.

## Контактная информация

---

Email: [andrey@shestakovyachtsales.com](mailto:andrey@shestakovyachtsales.com)

Web: [shestakovyachtsales.com](http://shestakovyachtsales.com)

## Телефоны

---

Краснодарский край: **+7(918)465-66-44**

США, Майами, Флорида: **+1(954)274-4435**

## Время работы

---

Понедельник – Суббота: **9:00 - 21:00**  
EDT

Воскресенье: **Закрето**

## Адрес

---



Harbour Towne Marina, 850 NE 3rd St,  
STE 213, Dania, FL 33004