

SAN LORENZO — SANLORENZO



Builder: SANLORENZO

Year Built: 1992

Model: Motor Yacht

Price: PRICE ON APPLICATION

Location: United States

LOA: 80' 0" (24.38m)

Beam: 20' 4" (6.20m)

Max Draft: 6' 8" (2.03m)

Our experienced yacht broker, Andrey Shestakov, will help you choose and buy a yacht that best suits your needs **San Lorenzo — SANLORENZO** from our catalogue. Presently, at Shestakov Yacht Sales Inc., we have a wide variety of yachts available on our sale's list. We also work in close contact with all the big yacht manufacturers from all over the world.

If you would like to buy a yacht **San Lorenzo — SANLORENZO** or would like help answering any questions concerning purchasing, selling or chartering a yacht, please call **+1(954)274-4435**

TABLE OF CONTENTS

TABLE OF CONTENTS	2
SPECIFICATIONS	3
Overview	3
Basic Information	3
Dimensions	3
Accommodations	4
Hull and Deck Information	4
Engine Information	4
DETAILED INFORMATION	5
Major Features	5
Exclusions	5
Disclaimer	5
PHOTOS	6
IMG_7512	6
CONTACTS	16
Contact details	16
Telephones	16
Office hours	16
Address	16

SPECIFICATIONS

Overview

Complete Refit 2014:

Rebuilt Engines

New Generators Kohler

New Teak Decking throughout the entire yacht

All New Interiors - Carpet, furniture, lighting

All New Exterior seating arrangements, sunpads, upholstery and covers.

Totally new Electronics - Home Entertainment and Audio Visual systems, Dual Garmin Navigational equipment both lower and upper helm.

Walkthrough:

Four staterooms (the full-beam master and the VIP both have king berths) with ensuite heads plus two crew cabins with ensuite heads, spacious aft deck & flybridge, and a pilothouse that rivals anything in her class.

Basic Information

Category: Motor Yacht

Model Year: 1992

Year Built: 1992

Country: United States

Fly Bridge: Yes

Dimensions

LOA: 80' 0" (24.38m)

Beam: 20' 4" (6.20m)

Max Draft: 6' 8" (2.03m)

Accommodations

Total Cabins: 4

Sleeps: 8

Total Heads: 4

Crew Cabin: 2

Crew Sleeps: 4

Hull and Deck Information

Hull Material: Fiberglass

Engine Information

Engines: 2

Manufacturer: Detroit Diesel

Model: 16V92

Engine Type: Inboard

Fuel Type: Diesel

DETAILED INFORMATION

Major Features

Sleeps 8; master is forward, full beam queen; master bath ensuite and features a Jacuzzi, other amenities: Plasma TV, vanity and spacious storage VIP is aft and is accessed through stairs in salon; totally private. Could also be utilized as Captain quarters or Office 2 guest cabins, each with twin beds and ensuite baths Crew; forward deck, 2 cabins, each with 2 twin size berths Very spacious, comfortable and elegant salon with several divans, bar, and entertainment center, formal dining with 6 table settings. Wheel House Electronics Features a U Shaped leather dinette for informal dining Satellite, computer, fax Alarms Flybridge Duplicate electronics as Wheel house; L Shaped divan; Bimini Top, refrigerator and icemaker Furuno 48 Mile integrated GPS, plotter & radar Northstar GPS Roberston Autopilot VHF Teak floor and all updated appliances; lots of natural light, can be closed off or kept open Two Kohler generators, 23kw each, New exhaust 2015 All AC chillers and air handlers new 2015 Bowthruster, gel battery Washer and Dryer Four Garmin 4212 SIMRAD Autopilot Refurbished couches Bimini 2013 KVH Tracvision Satellite TV HD LED lights 2012 Fire pump 2014 Two gray water 2014 Head hunter pump 2012 New chillwater pump 2012 Turboxy 2015 racor fuel filters 3 hot water heaters ZF transmission 120 AMP alternator Water maker 2 electrical booster cables 2 anchors with 400' chain Total Power: 1400 each Cruising Speed: 22 Max Speed: 31 Fuel: 1850 Fresh Water: 500 Holding: 100

Exclusions

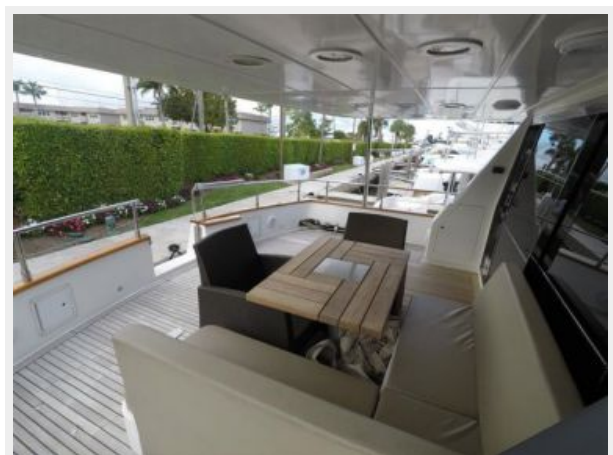
Owner's personal belongings.

Disclaimer

The Company offers the details of this vessel or yacht in good faith but cannot guarantee or warrant the accuracy of this information nor warrant the condition of the vessel. A buyer should instruct his representatives, agents, or his surveyors, to investigate such details as the buyer desires validated. This vessel or yacht is offered subject to prior sale, price change, or withdrawal without notice.

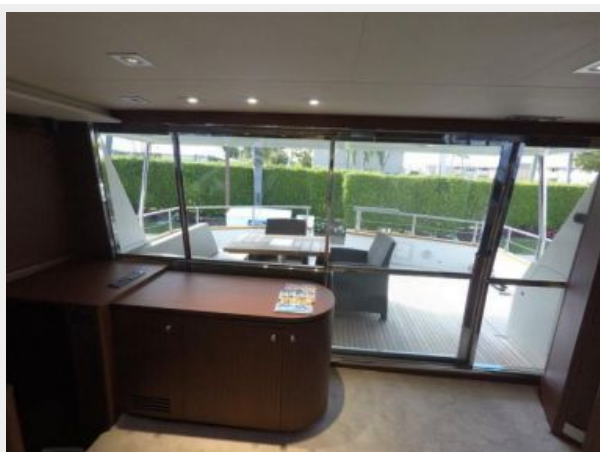
PHOTOS

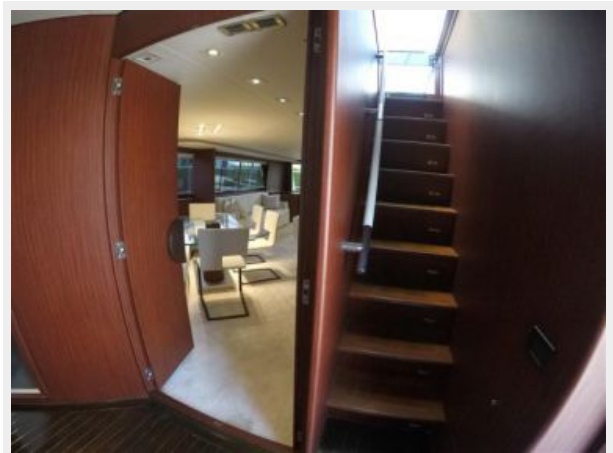
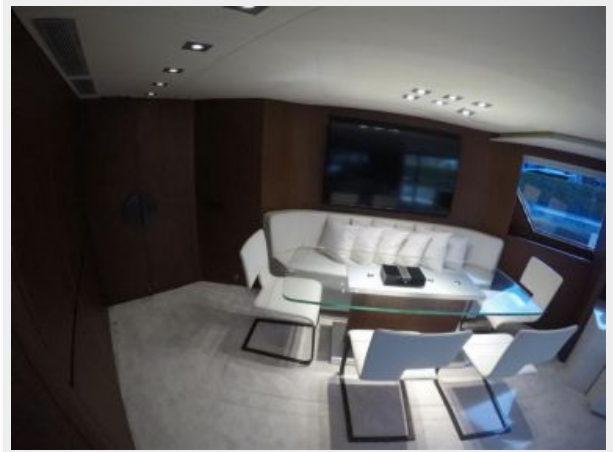
IMG_7512

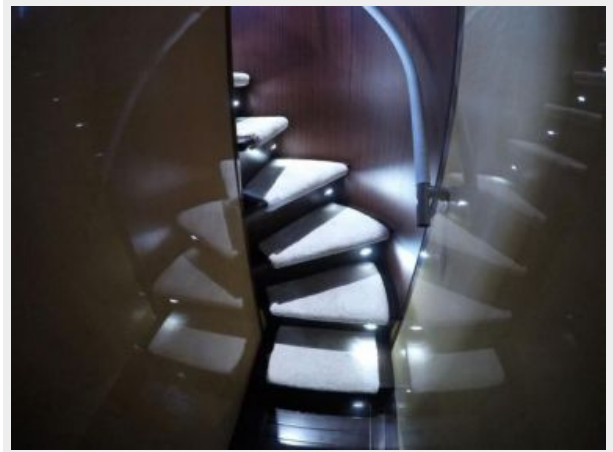




















CONTACTS

Andrey Shestakov, leading yacht broker of the sales department of Shestakov Yacht Sales Inc. Shestakov Yacht Sales Inc., the official representative of the Miami/Fort Lauderdale FL headquarters.

Contact details

Email: andrey@shestakovyachtsales.com

Web: shestakovyachtsales.com/en/

Telephones

USA: +1(954)274-4435

Office hours

Monday – Saturday: **9:00 - 21:00** EDT

Sunday: **closed**

Address



Harbour Towne Marina, 850 NE 3rd St,
STE 213, Dania, FL 33004