

C1 — AZIMUT



Builder: AZIMUT

Year Built: 2014

Model: Motor Yacht

Price: PRICE ON APPLICATION

Location: United States

LOA: 64' 0" (19.51m)

Beam: 16' 7" (5.05m)

Max Draft: 4' 11" (1.50m)

Cruise Speed: 28 Kts. (32 MPH)

Max Speed: 34 Kts. (39 MPH)

Our experienced yacht broker, Andrey Shestakov, will help you choose and buy a yacht that best suits your needs **C1 — AZIMUT** from our catalogue. Presently, at Shestakov Yacht Sales Inc., we have a wide variety of yachts available on our sale's list. We also work in close contact with all the big yacht manufacturers from all over the world.

If you would like to buy a yacht **C1 — AZIMUT** or would like help answering any questions concerning purchasing, selling or chartering a yacht, please call **+1(954)274-4435**

TABLE OF CONTENTS

TABLE OF CONTENTS	2
SPECIFICATIONS	4
Overview	4
Basic Information	4
Dimensions	4
Speed, Capacities and Weight	4
Accommodations	5
Hull and Deck Information	5
Engine Information	5
DETAILED INFORMATION	6
Remarks	6
Accommodations	7
Galley	7
Mechanical	7
Electrical Equipment	7
Electronics	7
Audio & Visual Equipment	8
Deck Equipment	9
Exclusions	9
Disclaimer	9
PHOTOS	10
Salon	10
Salon	10
Dining Salon	10
Dining Salon	10
Galley	10
Master Stateroom	10
Master Head	11

Master Stateroom	11
VIP Stateroom	11
VIP Head	11
Twin Guest Stateroom	11
Twin Guest Head	11
Flybridge Dining	11
Flybridge	11
Flybridge Aft	12
Aft Deck	12
Aft Deck Dining	12
Engine Room	12
Layout	12
Engine Room - Gen	12
Aft Profile	13
CONTACTS	14
Contact details	14
Telephones	14
Office hours	14
Address	14

SPECIFICATIONS

Overview

This flawless yacht is in better-than-new condition.

Basic Information

Category: Motor Yacht	Sub Category: Sedan Cruiser
Model Year: 2014	Year Built: 2014
Country: United States	Vessel Top: Electronic Sunroof
Fly Bridge: Yes	

Dimensions

LOA: 64' 0" (19.51m)	Beam: 16' 7" (5.05m)
Max Draft: 4' 11" (1.50m)	

Speed, Capacities and Weight

Cruise Speed: 28 Kts. (32 MPH)	Max Speed: 34 Kts. (39 MPH)
Displacement: 70400 Pounds	Gross Tonnage: 36 Pounds
Water Capacity: 285 Gallons	Fuel Capacity: 1030 Gallons

Accommodations

Total Cabins: 3

Sleeps: 8

Total Heads: 3

Crew Cabin: 1

Crew Berths: 2

Crew Sleeps: 2

Crew Heads: 1

Hull and Deck Information

Hull Material: Fiberglass

Deck Material: Teak

Hull Color: White & Gray

Engine Information

Engines: 2

Manufacturer: Caterpillar

Model: C-18

Engine Type: Inboard

Fuel Type: Diesel

DETAILED INFORMATION

Remarks

This is a Certified Pre-Owned Yacht, which means that it is guaranteed to have all of the following included:

- Current Patton Marine survey with 100% of the recommendations resolved
- All buyer's U.S. registration fees paid
- A notarized full-disclosure certificate
- Free transom name paint
- Full set of dishware, glasses, silver, and galley equipment including cookware
- Full navigational & electronics package
- Up-to-date entertainment systems throughout
- Complete safety package
- Yacht name embroidered on towels, jackets, sweatshirts, and T-shirts
- Complete set of bedding for all staterooms
- One oil & filter change anytime in the first year after purchase
- Boson's locker equipped with cleaning supplies & tools
- Full tank of fuel
- Full set of lines, fenders and customized fender socks
- Free crew placement service
- Handover training on all systems to buyer's crew
- Organized owner's manual and log
- Crew manual
- Extremely-friendly discounted marine services
- Personalized gift basket with christening champagne
- 95% of purchase price is credited when traded in on a yacht of greater value in the first year

- A yacht in virtually perfect condition

All photos in this specification are actual photographs taken with professional models aboard this boat.

Accommodations

This three stateroom layout is comprised of a king master, queen VIP and twin guest staterooms. All have ensuite baths with showers and entertainment systems.

Galley

Miele HS5040BM microwave & oven Miele 3 burner induction stove 2 Isotherm under-counter refrigerators Waeco under-counter freezer Wine cooler in salon

Mechanical

Twin CAT C-18 Diesel engines with 1150 HP Only 175 original hours Dual Racor fuel filters Twin Disc 2:1 Twin SeaKeeper gyro stabilizers Bow thruster Stern thruster Aquamatic compact 450-1800 watermaker Central vacuum Meile Touchtronic washer Meile Touchtronic dryer

Electrical Equipment

Kohler E23 EOZD 23 Kw Only 275 original hours 2 Kw Invertor Glendinning Cable Master

Electronics

Xenta joystick docking controls Wireless remote control for engines and both thrusters 2 X Raymarine G160 displays Raymarine 4KW HD radar Raymarine GS Series chart plotter

Navionics Platinum chart set

Raymarine P70 R autopilot

Raymarine I70 instrument display

Raymarine AIS 350

Raymarine VHF 260

Fishfinder

Raymarine camera system Starboard electric window KVH M7 Satellite antenna Fusion external sound system

Audio & Visual Equipment

Salon:

Samsung Smart TV 50"

Bose Sound System

Direct TV HD DVR satellite receiver with UPS

Samsung blu-ray player

Master Stateroom:

Samsung Smart TV 40"

Bose Sound System

Direct TV HD DVR satellite receiver

Samsung blu-ray player

VIP Cabin:

Samsung TV 32"

Samsung blu-ray player

Direct TV HD DVR satellite receiver

Twin Guest Stateroom:

Samsung TV 22"

Samsung blu-ray player

Direct TV HD DVR satellite receiver

Deck Equipment

Hydraulic swim platform with 1,250 lbs. lifting capacity Opacmare hydraulic passarelle Lofrans windlass with 320' of chain, Delta anchor with built-in washdown Quick brand chain counters Twin aft warping winches Electric retractable hardtop sunroof Underwater lighting

Exclusions

Owner's personal belongings.

Disclaimer

The Company offers the details of this vessel or yacht in good faith but cannot guarantee or warrant the accuracy of this information nor warrant the condition of the vessel. A buyer should instruct his representatives, agents, or his surveyors, to investigate such details as the buyer desires validated. This vessel or yacht is offered subject to prior sale, price change, or withdrawal without notice.

PHOTOS

Salon



Salon



Dining Salon



Dining Salon

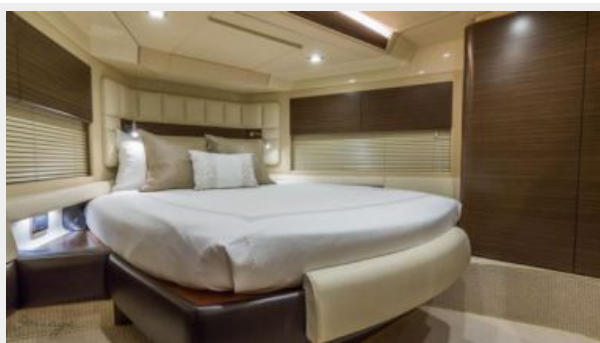


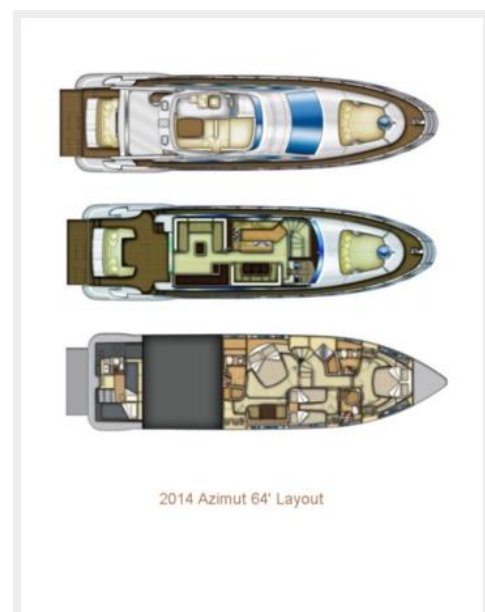
Galley



Master Stateroom



Master Stateroom**Master Head****VIP Stateroom****VIP Head****Twin Guest Stateroom****Twin Guest Head****Flybridge Dining****Flybridge**

Flybridge Aft**Aft Deck****Aft Deck Dining****Engine Room****Layout****Engine Room - Gen**

Aft Profile



CONTACTS

Andrey Shestakov, leading yacht broker of the sales department of Shestakov Yacht Sales Inc. Shestakov Yacht Sales Inc., the official representative of the Miami/Fort Lauderdale FL headquarters.

Contact details

Email:
andrey@shestakovyachtsales.com

Web: shestakovyachtsales.com/en/

Telephones

USA: **+1(954)274-4435**

Office hours

Monday – Saturday: **9:00 - 21:00 EDT**

Sunday: **closed**

Address



Harbour Towne Marina, 850 NE 3rd St,
STE 213, Dania, FL 33004