

# COCONUTS



**Year Built:** 2004

**Model:** Cruising Yacht

**Price:** PRICE ON APPLICATION

**LOA:** 32' (9.75mm)

**Beam:** 13

**Max Draft:** 3' (0.91mm)

Our experienced yacht broker, Andrey Shestakov, will help you choose and buy a yacht that best suits your needs **COCONUTS** — n/a from our catalogue. Presently, at Shestakov Yacht Sales Inc., we have a wide variety of yachts available on our sale's list. We also work in close contact with all the big yacht manufacturers from all over the world.

If you would like to buy a yacht **COCONUTS** — n/a or would like help answering any questions concerning purchasing, selling or chartering a yacht, please call **+1(954)274-4435**

# TABLE OF CONTENTS

TABLE OF CONTENTS	2
SPECIFICATIONS	5
Basic Information	5
Dimensions	5
Speed, Capacities and Weight	5
Accommodations	5
Hull and Deck Information	5
Engine Information	6
PHOTOS	7
BOW VIEW	7
STARBOARD VIEW	7
TRANSOM VIEW W/LARGE SWIM PLATFORM	7
PORT SIDE/TRANSOM VIEW	7
BOW VIEW W/WINDSHIELD BRA	8
COMPANIONWAY TO SALON	8
SALON VIEW FROM COMPANIONWAY	8
SALON W/GALLEY PORT, FORWARD QUEEN BERTH, AND CONVERTIBLE DINETTE TO PORT	8
RAISED HELM DECK W/L-SHAPED LOUNGE SEATING & HELM SEAT	9
FORWARD QUEEN BERTH	9
HEAD W/STAINLESS SINK, VACUFLUSH TOILET, SHOWER	9
GALLEY W/CORIAN COUNTERTOP, SS SIBNK, FRIDGE/FREEZER, COFFEE MAKER, SS MICROWAVE	9
CONVERTIBLE DINETTE W/HI-LO-TABLE	9
KENYON 2-BURNER COOKTOP	9
ISOTHERM FRIDGE/FREEZER	10
SS SINK	10
EMERSON MICROWAVE	10

BLACK & DECKER COFFEE MAKER	10
HELM STATION	10
RAYMARINE RL80C SOUNDER/RADAR	10
HARDTOP W/2-LEWMAR HATCHES & RAYMARINE OPEN ARRAY RADAR	11
RAYMARINE L1250 GPS/PLOTTER	11
RAYMARINE ST6001	11
RAYMARINE ST60 TRIDATA	11
RAYMARINE VHF RADIO	11
RITCHIE COMPASS	11
POINT PAD FOR SPOTLIGHT	12
SEA KEY EMERGENCY TRANSPONDER	12
CLARION XMD3 STEREO/CD PLAYER & PYLE DVD PLAYER	12
CLARION STEREO REMOTE AT HELM	12
CLARION MARINE SUBWOOFER	12
SHARP FLATSCREEN TV	12
AC & DC ELECTRICAL PANELS	13
WESTERBEKE 5KW DIESEL GENERATOR	13
CHARLES 12V ALTERNATOR REGULATOR	13
4-GROUP 31 AGM BATTERIES	13
CHARLES 60 AMP BATTERY CHARGER	14
DUAL 30 AMP SHORE POWER CONNECTIONS	14
HELM DECK STARBOARD	14
HELM DECK PORT	14
COCKPIT AC VENT AT HELM	14
VOLVO ENGINE MONITORING GAUGES	14
ELECTGRIC/HYDRAULIC RAMS RAISE ENTIRE HELMDECK FOR COMPLETE ENGINE ROOM ACCESS	15
HELM DECK ENGINE ROOM ACCESS	15
STARBOARD 310HP VOLVO DIESEL ENGINE	15
PORT 310 HP VOLVO DIESEL ENGINE	15

OIL CHANGE SYSTEM	15
LARGE COCKPIT FOR FISHING OR ENTERTAINING	15
COCKPIT WETBAR W/SINK, FRIDGE/FREEZER & STORAGE LOCKER	16
PORT COCKPIT REMOVABLE SEATING	16
LARGE TRANSOM LIVEWELL	16
IN-DECK STORAGE/FISH-BOX	16
FRESH & RAW WATER WASH-DOWN IN COCKPIT	16
IN-DECK STORAGE/FISH-BOX	16
HOT/COLD FRESHWATER SHOWER IN COCKPIT	17
TRANSOM DOOR	17
BOW VIEW LOOKING AFT W/SS BOW RAILING & 3-LEWMAR DECK HATCHES	17
FOLD-DOWN LADDER	17
MANUFACTURER PROVIDED IMAGE AT CRUISE	17
MAXWELL WINDLASS W/DECK SWITCHES, PLOW ANCHOR, PULPIT, & LOCKER W/FRESHWATER WASH-DOWN	17
CONTACTS	18
Contact details	18
Telephones	18
Office hours	18
Address	18

---

# SPECIFICATIONS

---

## Basic Information

---

**Category:** Cruising Yacht

**Sub Category:** Express

**Model Year:** 2004

**Year Built:** 2004

## Dimensions

---

**LOA:** 32' (9.75mm)

**Beam:** 13

**Max Draft:** 3' (0.91mm)

## Speed, Capacities and Weight

---

**Water Capacity:** 38 Gallons

**Holding Tank:** 20 Gal Gallons

**Fuel Capacity:** 256 Gal Gallons

## Accommodations

---

**Total Cabins:** 1

**Total Berths:** 2

**Sleeps:** 4

**Total Heads:** 1

## Hull and Deck Information

---

**Hull Material:** Fiberglass

**Deck Material:** Fiberglass

**Hull Configuration:** Deep Vee

**Hull Color:** WHITE

---

## Engine Information

---

**Engines:** 2

**Manufacturer:** Volvo Penta

**Engine Type:** Inboard

**Fuel Type:** Diesel

# PHOTOS

**STARBOARD VIEW**



**BOW VIEW**



**TRANSOM VIEW W/LARGE SWIM PLATFORM**



**PORT SIDE/TRANSOM VIEW**



### BOW VIEW W/WINDSHIELD BRA



### COMPANIONWAY TO SALON



### SALON VIEW FROM COMPANIONWAY



### SALON W/GALLEY PORT, FORWARD QUEEN BERTH, AND CONVERTIBLE DINETTE TO PORT





**RAISED HELM DECK W/L-SHAPED  
LOUNGE SEATING & HELM SEAT**



**FORWARD QUEEN BERTH**



**HEAD W/STAINLESS SINK, VACUFLUSH  
TOILET, SHOWER**



**GALLEY W/CORIAN COUNTERTOP, SS  
SIBNK, FRIDGE/FREEZER, COFFEE  
MAKER, SS MICROWAVE**



**CONVERTIBLE DINETTE W/HI-LO-TABLE**



**KENYON 2-BURNER COOKTOP**



**ISOTHERM FRIDGE/FREEZER**



**SS SINK**



**EMERSON MICROWAVE**



**BLACK & DECKER COFFEE MAKER**



**HELM STATION**



**RAYMARINE RL80C SOUNDER/RADAR**



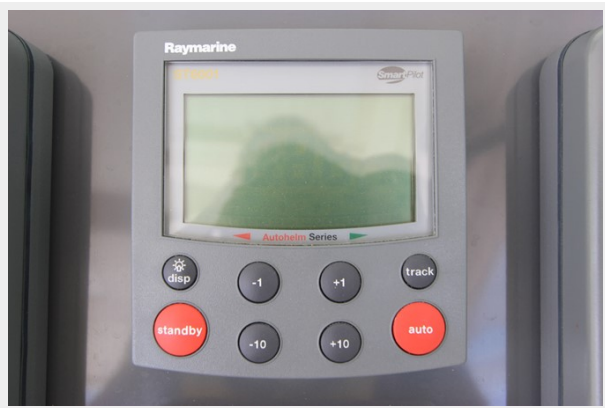
### RAYMARINE L1250 GPS/PLOTTER



### HARDTOP W/2-LEWMAR HATCHES & RAYMARINE OPEN ARRAY RADAR



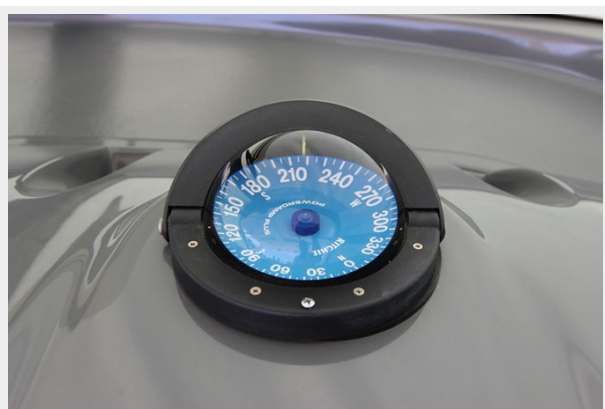
### RAYMARINE ST6001



### RAYMARINE ST60 TRIDATA



### RITCHIE COMPASS



### RAYMARINE VHF RADIO



### SEA KEY EMERGENCY TRANSPONDER



### POINT PAD FOR SPOTLIGHT



### CLARION XMD3 STEREO/CD PLAYER & PYLE DVD PLAYER



### CLARION STEREO REMOTE AT HELM



### CLARION MARINE SUBWOOFER



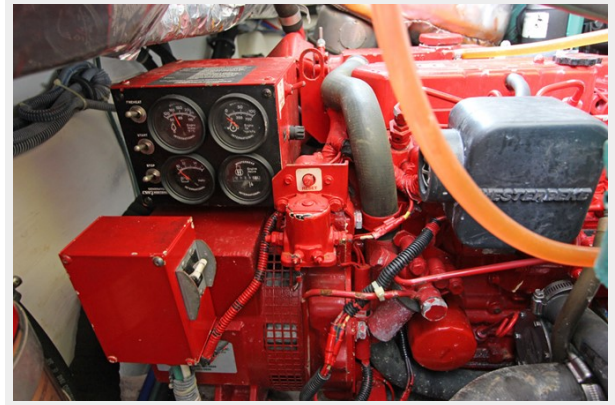
### SHARP FLATSCREEN TV



### AC & DC ELECTRICAL PANELS



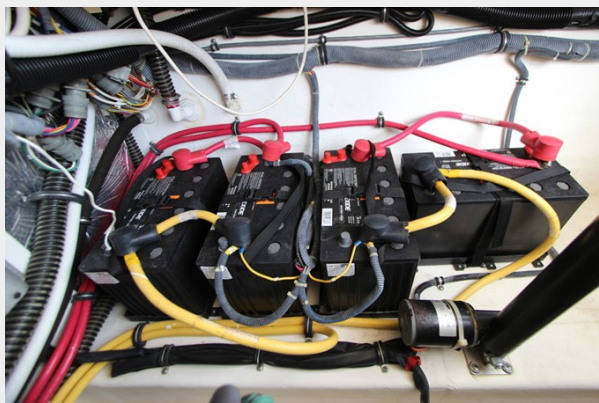
### WESTERBEKE 5KW DIESEL GENERATOR



### CHARLES 12V ALTERNATOR REGULATOR



### 4-GROUP 31 AGM BATTERIES



### CHARLES 60 AMP BATTERY CHARGER



### DUAL 30 AMP SHORE POWER CONNECTIONS



### HELM DECK STARBOARD



### HELM DECK PORT



### COCKPIT AC VENT AT HELM



### VOLVO ENGINE MONITORING GAUGES



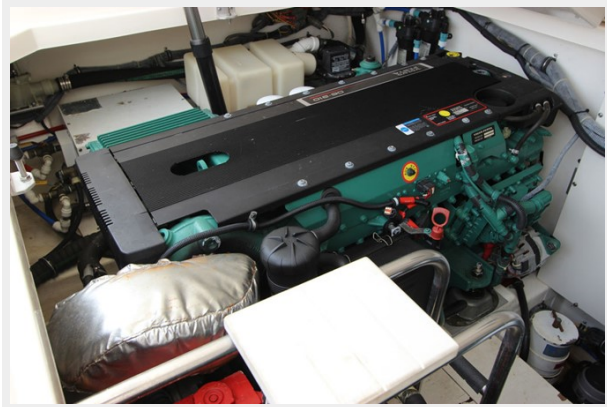
**HELM DECK ENGINE ROOM ACCESS**



**ELECTRIC/HYDRAULIC RAMS RAISE ENTIRE HELMDECK FOR COMPLETE ENGINE ROOM ACCESS**



**PORT 310 HP VOLVO DIESEL ENGINE**



**STARBOARD 310HP VOLVO DIESEL ENGINE**



**OIL CHANGE SYSTEM**



**LARGE COCKPIT FOR FISHING OR ENTERTAINING**



**PORT COCKPIT REMOVABLE SEATING**



**COCKPIT WETBAR W/SINK, FRIDGE/FREEZER & STORAGE LOCKER**



**LARGE TRANSOM LIVEWELL**



**IN-DECK STORAGE/FISH-BOX**



**IN-DECK STORAGE/FISH-BOX**



**FRESH & RAW WATER WASH-DOWN IN COCKPIT**





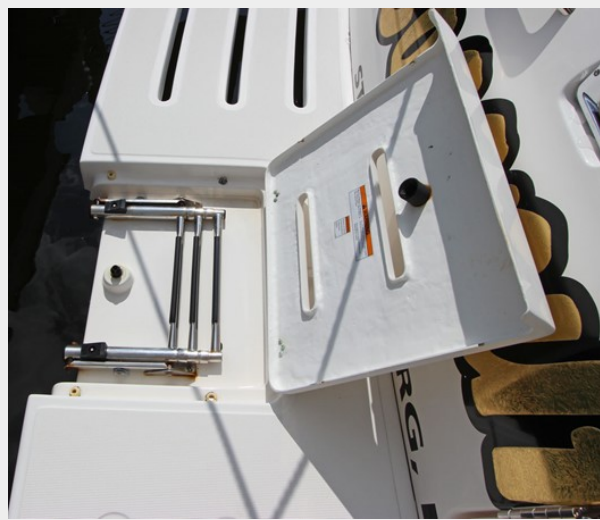
**HOT/COLD FRESHWATER SHOWER IN COCKPIT**



**TRANSOM DOOR**



**FOLD-DOWN LADDER**



**BOW VIEW LOOKING AFT W/SS BOW RAILING & 3-LEWMAR DECK HATCHES**



**MAXWELL WINDLASS W/DECK SWITCHES, PLOW ANCHOR, PULPIT, & LOCKER W/FRESHWATER WASH-DOWN**



**MANUFACTURER PROVIDED IMAGE AT CRUISE**



# CONTACTS

---

Andrey Shestakov, leading yacht broker of the sales department of Shestakov Yacht Sales Inc. Shestakov Yacht Sales Inc., the official representative of the Miami/Fort Lauderdale FL headquarters.

## Contact details

---

Email: [andrey@shestakovyachtsales.com](mailto:andrey@shestakovyachtsales.com)

Web: [shestakovyachtsales.com/en/](http://shestakovyachtsales.com/en/)

## Telephones

---

USA: +1(954)274-4435

## Office hours

---

Monday – Saturday: **9:00 - 21:00** EDT

Sunday: **closed**

## Address

---



Harbour Towne Marina, 850 NE 3rd St,  
STE 213, Dania, FL 33004