

## AL BOUCHARA — AZIMUT



**Builder:** [AZIMUT](#)

**Year Built:** 2012

**Model:** Mega Yacht

**Price:** PRICE ON APPLICATION

**Location:** Italy

**LOA:** 103' 0" (31.40m)

**Beam:** 21' 8" (6.60m)

**Min Draft:** 5' 4" (1.62m)

**Max Draft:** 5' 4" (1.62m)

Our experienced yacht broker, Andrey Shestakov, will help you choose and buy a yacht that best suits your needs **AL BOUCHARA — AZIMUT** from our catalogue. Presently, at Shestakov Yacht Sales Inc., we have a wide variety of yachts available on our sale's list. We also work in close contact with all the big yacht manufacturers from all over the world.

If you would like to buy a yacht **AL BOUCHARA — AZIMUT** or would like help answering any questions concerning purchasing, selling or chartering a yacht, please call **+1(954)274-4435**

---

# TABLE OF CONTENTS

---

TABLE OF CONTENTS	2
SPECIFICATIONS	3
Overview	3
Basic Information	5
Dimensions	6
Speed, Capacities and Weight	6
Accommodations	6
Hull and Deck Information	6
Engine Information	6
PHOTOS	7
CONTACTS	11
Contact details	11
Telephones	11
Office hours	11
Address	11

---

# SPECIFICATIONS

---

## Overview

---

### *SPECIFICATION*

Length:	31,40 mt
Beam:	6,60 mt
Draft:	1,62 mt
Hull Material:	Fiberglass
Fuel Capacity:	16400 lt
Water Capacity:	2500 lt
Flag:	ITALY
Location:	TYRRENIAN SEA
Year:	2012

### *LAYOUT*

Cabins:	5 + 2 CREW
---------	------------

---

Berth:	10 + 4 CREW
Toilet:	5 + 1 CREW

**ENGINE**

Brand:	MTU
Model:	16V 2000 M93
Power:	2 X 2400 HP
Engine hours:	770
Trasmission:	SHAFT DRIVE
Fuel:	Diesel

**ACCESSORIES**

Cruisair air treating system - Hard Top on flybridge - Layout modification: day head on the main deck (with shower and door to utility room) - Two 55 Kw (50Hz)/ 65 Kw (60Hz) Generators (splitting bars included) - Gel batteries - Additional Mastervolt charger for generator batteries - Phone jack outlets in each stateroom, pilothouse, galley, salon, crew cabins with wiring run to a central location in the pilothouse - Telephones (one master, one cordless + slave phones in each area) - Extra conduits connecting engine room-wheelhouse-flybridge-radar arch - Six spare breakers for post delivery options - Dimmers for internal lights (heads and galley excluded) - Dimmers for external lights (cockpit and flybridge) - Additional

radar arch for second antenna - Bow Thruster tube screen - Zero speed stabilizers - Rubrall in rubber and steel around the swim platform and side cleats - Varnished caprail on bulwark - Additional pair of midship cleats (with fairleads) - Pair of pop-up cleats on swim platform - Pair of spot lights on aft flybridge (recessed in the fiberglass) - Two U shape stainless steel handrails for swim platform - Sunbathing cushions on bow on the superstructure with stainless steel handrails - Ice maker in the flybridge cabinet - Teak flooring on all flybridge - Compass rose inlay on teak table - Mosquito screen for porthole - each - Oil change system for main engines and generators - 180 l/h (48 gals/h) Idromar watermaker - Double Racor filter for main engines - Double Racor filter for generators - Garbage disposal in galley - Double bed in one of the guest cabins in lieu of twin beds - Additional folding bed in each crew cabin - Spring mattresses in all cabins (crew excluded) - Fridge in master cabin - Varnished wooden floor in galley - Varnished wooden floor in wheelhouse - Additional insulation behind master bedroom - LED TV 50" in salon with furniture modification - LED TV 32" cockpit (not recessed), with support - LED TV 26" in VIP in lieu of standard - Predisposition for TV on fly - Bimini extended on cockpit and fly (not recessed) - Cockpit Cover - Frequency Converter - Alpha laval system - Additional 25 + 25m chains for anchors - A/C Upgrade (2x24.000 in salon, 2x12.000 in dining, 2x12.000 in galley, 1x12.000 in the lobby) - Full height refrigerator in lieu of dishwasher in galley - Painting of the total boat (hull + superstructure + external cabinets) in Awlgrip Awlcraft 2000 Show White color - Installation of Electronics, Videocameras and SAT antenna - Chaincounter - Crane on fly only predisposition - 8 Under water lights from sea vision model SV 10 new plasma - One Glendenning cable master with 20 m cable (125 A) - Bow stems stainless steel plate protection - Led Lighting - Three bar stools of stainless steel - Wine cooler by Vico with glass door - Refueling system in the garage (Gun + hose for tender fuel from the yacht tank - Kahlenberg air horn - Francis Search light..

---

## Basic Information

---

**Category:** Mega Yacht

**Model Year:** 2012

**Year Built:** 2012

**Country:** Italy

---

## Dimensions

---

**LOA:** 103' 0" (31.40m)**Beam:** 21' 8" (6.60m)**Min Draft:** 5' 4" (1.62m)**Max Draft:** 5' 4" (1.62m)

---

## Speed, Capacities and Weight

---

**Water Capacity:** 660.43013 Gallons**Fuel Capacity:** 4332.4216528 Gallons

---

## Accommodations

---

**Total Cabins:** 5**Total Berths:** 10**Total Heads:** 5**Crew Cabin:** 2**Crew Berths:** 4**Crew Heads:** 2

---

## Hull and Deck Information

---

**Hull Material:** Fiberglass

---

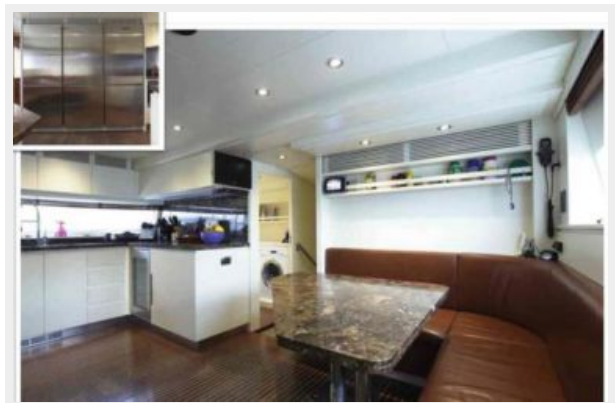
## Engine Information

---

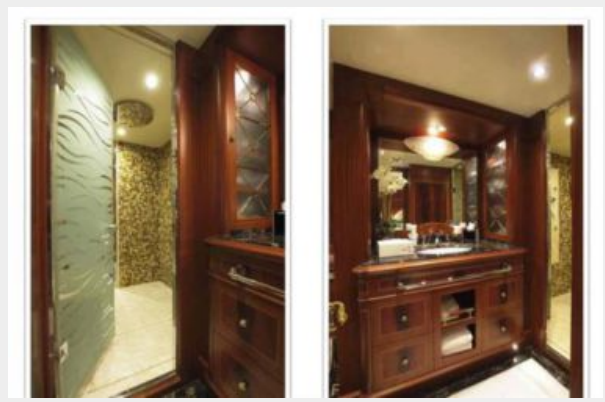
**Engines:** 2**Manufacturer:** MTU**Model:** 16V 2000 M93**Fuel Type:** Diesel

# PHOTOS











# CONTACTS

---

Andrey Shestakov, leading yacht broker of the sales department of Shestakov Yacht Sales Inc. Shestakov Yacht Sales Inc., the official representative of the Miami/Fort Lauderdale FL headquarters.

## Contact details

---

Email: [andrey@shestakovyachtsales.com](mailto:andrey@shestakovyachtsales.com)

Web: [shestakovyachtsales.com/en/](http://shestakovyachtsales.com/en/)

## Telephones

---

USA: +1(954)274-4435

## Office hours

---

Monday – Saturday: **9:00 - 21:00** EDT

Sunday: **closed**

## Address

---



Harbour Towne Marina, 850 NE 3rd St,  
STE 213, Dania, FL 33004