

## HOMERUN — VIKING



**Builder:** [VIKING](#)

**Year Built:** 2004

**Model:** Sport Fisherman

**Price:** PRICE ON APPLICATION

**Location:** United States

**LOA:** 52' 0" (15.85m)

**Min Draft:** 5' 2" (1.57m)

**Cruise Speed:** 33 Kts. (38 MPH)

**Max Speed:** 39 Kts. (45 MPH)

Our experienced yacht broker, Andrey Shestakov, will help you choose and buy a yacht that best suits your needs **HOMERUN — VIKING** from our catalogue. Presently, at Shestakov Yacht Sales Inc., we have a wide variety of yachts available on our sale's list. We also work in close contact with all the big yacht manufacturers from all over the world.

If you would like to buy a yacht **HOMERUN — VIKING** or would like help answering any questions concerning purchasing, selling or chartering a yacht, please call **+1(954)274-4435**

# TABLE OF CONTENTS

TABLE OF CONTENTS	2
SPECIFICATIONS	5
Overview	5
Basic Information	5
Dimensions	5
Speed, Capacities and Weight	5
Accommodations	6
Hull and Deck Information	6
Engine Information	6
DETAILED INFORMATION	7
Remarks	7
Salon	7
Galley	8
Master Stateroom	8
VIP Stateroom Forward	9
Starboard Guest Stateroom	9
Guest Head	9
Fly Bridge	10
Electronics	11
Deck and Hull	11
Cockpit	12
Engine Room and Mechanical	12
Exclusions	13
Exclusions	13
Disclaimer	13
PHOTOS	15
Salon	15
Salon	15

Salon Seating	15
Salon Seating	15
Salon Seating	15
Dinette	15
Dinette TV	16
Dinette Seating	16
Galley	16
Galley	16
Sub Zeros	16
Master Stateroom	16
Master Stateroom	17
Master Stateroom	17
Master Stateroom	17
Master Head	17
Master Head	17
VIP Stateroom	17
VIP Stateroom	18
VIP Head	18
VIP Head	18
Bunkroom	18
Bunkroom	19
Washer & Dryer	19
Electronics	19
Electronics	19
Comm	19
Helm	19
Helm	20
Helm Seating	20
Fly Bridge Seating	20

Wake	20
Cockpit	20
Cockpit	20
Cockpit	21
Cockpit	21
Fighting Chair	21
Cockpit	21
Fighting Chair	21
Teaser Reels	21
Engine Compartment	22
Engine room	22
Generator	22
Water Maker	22
Idling	22
Port Profile	22
Port Bow	23
Starboard Bow	23
Starboard Profile	23
Port profile	23
Bow	23
Heading Out	23
Transom	24
<b>CONTACTS</b>	<b>25</b>
Contact details	25
Telephones	25
Office hours	25
Address	25

---

# SPECIFICATIONS

---

## Overview

---

“HOME RUN” is one of the best examples of a pre-owned 52’ Viking you will find. She has been meticulously maintained by a full time crew and is set up to travel and fish anywhere you want to go! She features a water maker, ice chipper, excellent electronics package, underwater lights, Release Marine fighting chair, teak covering boards, flat screen TV’s, Miya Epoch electric teaser reels and MUCH MORE. Recently added updates include:

- **New SAT TV (KVH) and phone**
- **New Valances**
- **New Headliner**
- **Sofas Reupholstered (2)**
- **New Salon Tables**
- **New Garmin Electronics (7215 & 7212) with 3KW Transducer Chirp system and Autopilot**
- **New Carpet Runners**
- **New Bedroom Linens**

## Basic Information

---

**Category:** Sport Fisherman

**Sub Category:** Convertible

**Model Year:** 2004

**Year Built:** 2004

**Country:** United States

**Fly Bridge:** Yes

## Dimensions

---

**LOA:** 52' 0" (15.85m)

**Min Draft:** 5' 2" (1.57m)

## Speed, Capacities and Weight

---

**Cruise Speed:** 33 Kts. (38 MPH)

**Max Speed:** 39 Kts. (45 MPH)

**Displacement:** 62000 Pounds

**Water Capacity:** 200 Gallons

**Holding Tank:** 50 Gallons

**Fuel Capacity:** 1200 Gallons

---

## Accommodations

---

**Total Cabins:** 3

**Total Heads:** 2

---

## Hull and Deck Information

---

**Hull Material:** Fiberglass

---

## Engine Information

---

**Engines:** 2

**Manufacturer:** MAN

**Model:** 2842LE404

**Engine Type:** Inboard

**Fuel Type:** Diesel

---

## DETAILED INFORMATION

---

### Remarks

---

“HOME RUN” is one of the best examples of a pre-owned 52’ Viking you will find. She has been meticulously maintained by a full time crew and is set up to travel and fish anywhere you want to go! She features a water maker, ice chipper, excellent electronics package, underwater lights, Release Marine fighting chair, teak covering boards, flat screen TV’s, Miya Epoch electric teaser reels and MUCH MORE. Recently added updates include:

- **New SAT TV (KVH) and phone**
- **New Valances**
- **New Headliner**
- **Sofas Reupholstered (2)**
- **New Salon Tables**
- **New Garmin Electronics (7215 & 7212) with 3KW Transducer Chirp system and Autopilot**
- **New Carpet Runners**
- **New Bedroom Linens**

### Salon

---

The wide beam carries well aft and affords a surprisingly spacious salon complete with professionally designed upholstery, window treatments and drapery. An L-shaped lounge to port is the ideal spot to relax.

- Salon door damper
- Amtico teak & holly flooring at salon entrance
- Teak trim where edges of carpet meet Amtico teak & holly floor
- Electric panel down
- Bose Lifestyle home theater system
- 42” Toshiba Flat screen TV above dinette
- TV displays depth and GPS screen
- Sony DVD/ VHS player
- Sirrus Satellite Radio
- Ipod Dock

- SAT Phone
- Dimmers on overhead low voltage AC
- Window blinds
- Privacy curtain for salon door
- Valances wrapped in custom fabric
- Teak dinette table
- Chrome knobs & hardware on drawers/doors
- Cruise Air A/C w/ separate controls
- Salon sofa, L-shaped Ultra Leather w/ full cover
- (2) Sunbrella covers for salon carpet

## Galley

---

- 4 Subzero under counter refrigerator and freezer drawers w/teak faces
- Amtico teak and holly in galley and under dinette
- High polished Corian countertop with molded in sink
- In sink garbage disposal
- Grohe faucet
- 3 Burner Kenyon range
- Sharp microwave convection oven
- Slide bolts installed for upper galley drawers on underside of drawers
- New Whirlpool washer and dryer
- Huge storage drawers
- Storage cabinets and drawers in lower galley

## Master Stateroom

---

The offset companionway maximizes interior space and privacy in this three-stateroom layout. To port is master stateroom featuring a queen-size walk-around berth that lifts to access ample storage and teak night tables on each side of the upholstered headboard. The hull side of the master is lined with a built-in credenza.

- Queen size walk-around bed w/lift up top & maple lined storage beneath dimmers on overhead low-voltage AC lights
- Sound system speakers



- Custom wallpaper installation
- Teak end table tops
- Teak entry credenza
- Flat screen TV Sharp 15" LCD w/DVD Player
- Teak hanging locker, maple lined
- Upholstered head board
- Cruise Air A/C Controlled
- 2 eyeball soffit lights above night tables
- Deck hatch with built-in screen and shade

---

## VIP Stateroom Forward

---

The forward guest stateroom features upper and lower berths - a generous beam allows an expanded lower berth. The guest head features private access from both guest staterooms and can also be reached from the companionway to serve day guests.

- Dimmers on overhead low-voltage AC lights
- 15" flat screen TV
- Sound system speakers Separate AC control
- Deck hatch with built-in screen and shade
- Carpeting
- Cedar lined hanging locker

---

## Starboard Guest Stateroom

---

Sleeping accommodations in the starboard stateroom are also upper and lower berths. An alcove with teak and holly sole adjoining this stateroom conceals a stacked washer and dryer, while the central vacuum system is housed in the companionway steps.

- Upper/lower bunks with lift up cover storage
- Dimmers on overhead low-voltage AC lights
- Sound system speakers
- Separate AC control
- Deck hatch with built-in screen and shade
- Teak hanging locker
- Stereo speakers recessed in head liner

---

## Guest Head

---

- Teak face on lower vanity

- Sea Land vacu flush fresh water head
- Medicine cabinet w/mirrored doors
- Corian vanity
- faucet
- Chrome shower fixtures
- Acrylic-chrome towel hooks
- Chrome shower door
- Exhaust fan

- Teak face on lower vanity
- Sea Land vacu flush fresh water head
- Medicine cabinet w/mirrored doors
- Corian vanity

- faucet
- Chrome shower fixtures
- Acrylic-chrome towel hooks
- Chrome shower door
- Exhaust fan

- Teak face on lower vanity
- Sea Land vacu flush fresh water head
- Medicine cabinet w/mirrored doors
- Corian vanity

- faucet
- Chrome shower fixtures
- Acrylic-chrome towel hooks
- Chrome shower door
- Exhaust fan

- Teak face on lower vanity
- Sea Land vacu flush fresh water head
- Medicine cabinet w/mirrored doors
- Corian vanity

- faucet
- Chrome shower fixtures
- Acrylic-chrome towel hooks
- Chrome shower door
- Exhaust fan

## Fly Bridge

---

- Viking custom fiberglass hardtop
- 2 molded in quartz lights
- 24V Miya Epoch US9 Supers recessed electric teaser reels
- Rupp outriggers
- Rupp center rigger
- Custom powder coated aluminum flybridge ladder
- Custom Palm Beach helm pod
- Electronic single-lever controls for helm pod
- Recessed electronics boxes

- Trim tab switches
- 8 Rod rocket launcher
- 3 sided enclosure w/, track to track on front and sides of enclosure, Strataglass enclosure upgrade for all panels plus EZ2CY for front center panel
- Zippered vents at top of front panels of enclosure
- Fresh water outlet
- Dual Horns on port side
- Insulated soda box in starboard bench seat
- Murray Bros helm and companion chairs
- Removable backrest on starboard jump seat
- Rupp antenna standoffs
- Sony Speakers for sound system

---

## Electronics

---

- North Star 6100i GSP plotter
- 2 Furuno 10.4" NAV NET monitors
- Furuno 48 Mile Radar
- Furuno GPS, chart plotter, Color sounder
- Furuno RD 30 speed, water temp, distance and depth
- MAN Marine Diesel Displays
- Moritz Monitoring Display
- Garmin 7215 & 7212 with 2KW Chirp
- Spectra MCP-5000 Water maker display
- Furuno Navpilot 500 auto pilot
- SAT phone (KVH M5)
- ICOM M602 VHF radio w/ hailer
- ICOM M504 VHF radio
- 2 VHF speakers in hard top
- ICOM Command mic in cockpit
- 2 New Shakespeare 5018 Antennas
- Ritchie Compas

---

## Deck and Hull

---

- Fighting Lady Yellow hull color
- No Bow pulpit
- Bow Rail
- Fuel fills on port and starboard sides
- Fresh water wash-down at bow inside anchor locker
- Oval exhaust outlets
- Recessed trim tab covers

- Full length handrails P & Son sides of flybridge
- Fiberglass side thru-hulls
- Three Bomar opening hatches

## Cockpit

---

- Cockpit freezer with dual freezer/refrigerator thermostats
- Tackle center with cutting board and drawers below
- Eskimo ice machine with discharge into starboard cockpit sole box
- 2 Underwater Lights
- Icom Command mic in haunch
- Live well in port cockpit sole box
- 2 spare props mounted in lazarette
- Transom coaming with gate
- Dive ladder w/ transom mount
- Cablemaster w/ 50 Amp shore power cord
- Shore fresh water connection
- Lazarette painted with Awl grip
- Cockpit sole fish box
- S/S gas springs for live bait well
- S/S gas springs for sole box lids
- Sound system speakers
- Release Marine Teak fighting chair w/ rocket launcher back, bait tray, foot rest and no-bolt pedestal
- 4 Rod holders in haunch
- 24" handrails P & S haunches
- 5 Rod holders no bolt in gunnels
- Teak Covering Boards
- Teak salon steps
- Lighting under coaming, direct overhead and flybridge mounted quartz lights
- Cockpit sunshade
- Quick disconnect for oil change system under starboard gunnel
- 12V receptacles
- Fresh water wash-down
- Saltwater wash-down
- Rupp outriggers and center rigger
- Cockpit speakers with separate volume control
- Pump for operating starboard
- Saltwater wash down

## Engine Room and Mechanical

---

- Twin MAN V12 1300hp 2842LE404
- MAN Backup controls on bridge
- MAN Marine Diesel Displays
- Onan 21 KW generator
- Two Three Phase Battery Chargers
- Racor Fuel-water separator for generator
- Dual Racor fuel filters w/ pressure gauge painted snow white
- 24V Reverso fuel priming pumps
- Additional fuel tank forward for a total of (3) tanks & approximate total of 1,400 gallons Delta T: engine room intake air system w/supply & discharge fans
- ISO Boost Voltage stabilizer
- Spectra MPC-5000 Water maker with auto back flush
- Eskimo Ice chipper
- Brass thru-hulls & sea strainers in engine room & forward bilges painted with Awl grip
- Engine room dry-out pump
- Fire suppression system
- Fresh water wash-down for cleaning
- Fuel transfer system 24V DC pump
- Oil changing system for mains, gears, generator
- 2 ¾" Aqua-Net double taper shafts
- Crash pump
- Engine room painted with Awl grip
- Central drains to reduce number of thru hull fittings
- Engine gauges installed in engine room entrance, RPM, Engine temp, oil pressure
- Power assist steering

## Exclusions

---

Owners Personal Items

## Exclusions

---

Owner's personal belongings.

## Disclaimer

---

The Company offers the details of this vessel or yacht in good faith but cannot guarantee or warrant the accuracy of this information nor warrant the condition of the vessel. A buyer should instruct his representatives, agents, or his surveyors, to investigate such details as the buyer desires validated. This vessel or yacht is offered subject to prior sale, price change, or withdrawal

without notice.

# PHOTOS

Salon



Salon



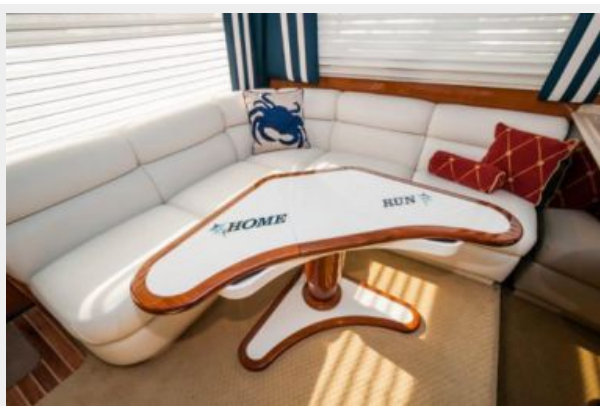
Salon Seating



Salon Seating



Salon Seating



Dinette





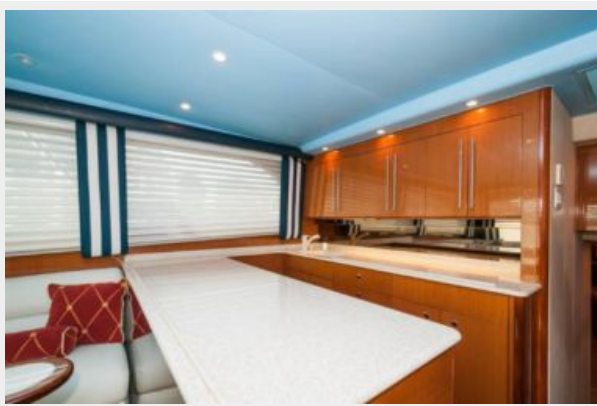
**Dinette TV**



**Dinette Seating**



**Galley**



**Galley**



**Sub Zeros**



**Master Stateroom**





**Master Stateroom**



**Master Stateroom**



**Master Stateroom**



**Master Head**



**Master Head**



**VIP Stateroom**



**VIP Stateroom**



**VIP Head**



**VIP Head**



**Bunkroom**



**Bunkroom**



**Washer & Dryer**



**Electronics**



**Electronics**



**Comm**



**Helm**





**Helm**



**Helm Seating**



**Fly Bridge Seating**



**Wake**



**Cockpit**



**Cockpit**



**Cockpit**



**Cockpit**



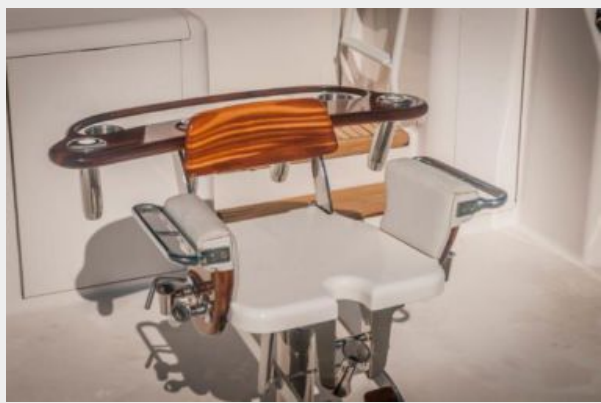
**Cockpit**



**Fighting Chair**



**Fighting Chair**



**Teaser Reels**





**Engine Compartment**



**Engine room**



**Generator**



**Water Maker**



**Idling**



**Port Profile**



**Port Bow**



**Starboard Bow**



**Starboard Profile**



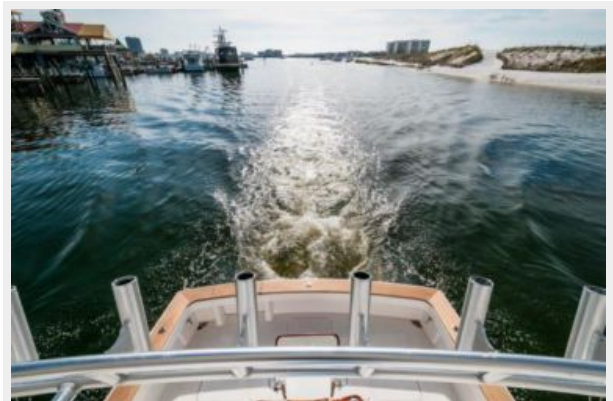
**Port profile**



**Bow**



**Heading Out**



## Transom





# CONTACTS

---

Andrey Shestakov, leading yacht broker of the sales department of Shestakov Yacht Sales Inc. Shestakov Yacht Sales Inc., the official representative of the Miami/Fort Lauderdale FL headquarters.

## Contact details

---

Email: [andrey@shestakovyachtsales.com](mailto:andrey@shestakovyachtsales.com)

Web: [shestakovyachtsales.com/en/](http://shestakovyachtsales.com/en/)

## Telephones

---

USA: +1(954)274-4435

## Office hours

---

Monday – Saturday: **9:00 - 21:00** EDT

Sunday: **closed**

## Address

---



Harbour Towne Marina, 850 NE 3rd St,  
STE 213, Dania, FL 33004