

CHEROSA — SWIFTSHIPS



Builder: SWIFTSHIPS

Year Built: 1998

Model: Motor Yacht

Price: PRICE ON APPLICATION

Location: United States

LOA: 153' 0" (46.63m)

Beam: 28' 0" (8.53m)

Min Draft: 7' 3" (2.21m)

Max Draft: 8' 3" (2.51m)

Cruise Speed: 10 Kts. (12 MPH)

Max Speed: 13 Kts. (15 MPH)

Our experienced yacht broker, Andrey Shestakov, will help you choose and buy a yacht that best suits your needs **CHEROSA — SWIFTSHIPS** from our catalogue. Presently, at Shestakov Yacht Sales Inc., we have a wide variety of yachts available on our sale's list. We also work in close contact with all the big yacht manufacturers from all over the world.

If you would like to buy a yacht **CHEROSA — SWIFTSHIPS** or would like help answering any questions concerning purchasing, selling or chartering a yacht, please call **+1(954)274-4435**

TABLE OF CONTENTS

TABLE OF CONTENTS	2
SPECIFICATIONS	6
Basic Information	6
Dimensions	6
Speed, Capacities and Weight	6
Accommodations	6
Hull and Deck Information	7
Engine Information	7
DETAILED INFORMATION	8
PRELIMINARY LISTING	8
Fly Bridge	8
Fly Bridge Electronics	8
Engine Room	9
Engine Room Machinery Refit	9
Walk-Through Main Deck	10
Salon / Main Deck	11
Aft Deck	11
Galley	12
Guest Stateroom Foyer	12
Port En-Suite Twin Stateroom	12
Starboard Twin Stateroom	13
Full-Beam Master Stateroom	13
Master Bath	13
Forward Deck	13
Sky Lounge	14
Sky Lounge Galley	14
Boat Deck	14
Sun Deck	15

Swim Platform	15
Salesman's Summary	15
Exclusions	15
Disclaimer	15
PHOTOS	16
Aft Deck	16
Aft Deck	16
Day Head	16
Aft Deck	16
VIP Office	16
VIP Office	16
VIP Office	17
VIP Stateroom	17
VIP Stateroom	17
VIP Stateroom	17
VIP Stateroom Head	17
VIP Stateroom Head	17
VIP Stateroom Head	18
Dining	18
Dining	18
Dining	18
Salon	18
Salon	18
Salon	19
Salon	19
Salon - Bar	19
Salon - Bar	19
Galley	19
Galley	19

Galley	20
Galley	20
Dinette	20
Dinette	20
Lower Companionway	21
Lower Companionway	21
Port Twin Stateroom	21
Port Twin Stateroom	21
Port Twin Stateroom Head	22
Port Twin Stateroom Head	22
Starboard Twin Stateroom	22
Starboard Twin Stateroom	22
Starboard Twin Stateroom Head	23
Starboard Twin Stateroom Head	23
Master Stateroom	23
Master Stateroom	23
Master Stateroom	23
Master Stateroom	23
Master Stateroom Head	24
Master Stateroom Head	24
Master Stateroom Head	24
Master Stateroom Head	24
Master Stateroom Head	24
Master Stateroom Head	24
Laundry	25
Laundry	25
Sky Lounge Companionway	25
Sky Lounge	25
Sky Lounge	26

Sky Lounge	26
Sky Lounge	26
Sky Lounge Galley	26
Sky Lounge Galley	26
Sky Lounge Stateroom	26
Sky Lounge Stateroom	27
Sky Lounge Stateroom	27
Sky Lounge Guest Head	27
Sky Lounge Guest Head	27
Port Passageway	28
Sky Lounge Aft Deck	28
Sky Lounge Aft Deck	28
Sun Deck	28
Sun Deck	28
Sun Deck	28
Sun Deck	29
Bow	29
Engine Room	29
Engine Room	29
Engine Room	29
Engine Room	29
Engine Room	30
Engine Room	30
General Arrangement	30
CONTACTS	31
Contact details	31
Telephones	31
Office hours	31
Address	31

SPECIFICATIONS

Basic Information

Category: Motor Yacht

Sub Category: Tri-Deck

Model Year: 1999

Year Built: 1998

Refit Year: 2014

Refit Type: Engine Room

Country: United States

Vessel Top: Enclosed P.H. W/Sundeck

Dimensions

LOA: 153' 0" (46.63m)

Beam: 28' 0" (8.53m)

Min Draft: 7' 3" (2.21m)

Max Draft: 8' 3" (2.51m)

Speed, Capacities and Weight

Cruise Speed: 10 Kts. (12 MPH)

Max Speed: 13 Kts. (15 MPH)

Gross Tonnage: 242 Pounds

Water Capacity: 3500 Gallons

Holding Tank: 1100 Gallons

Fuel Capacity: 15000 Gallons

Accommodations

Total Cabins: 5

Total Berths: 6

Sleeps: 10

Total Heads: 8

Crew Cabin: 3

Crew Berths: 7

Hull and Deck Information

Hull Material: Aluminum

Deck Material: Teak

Hull Configuration: Semi-Displacement

Hull Designer: Swiftships

Exterior Designer: Tim Borland

Interior Designer: Owners

Engine Information

Engines: 2

Manufacturer: Caterpillar

Model: C-32

Engine Type: Inboard

Fuel Type: Diesel

DETAILED INFORMATION

PRELIMINARY LISTING

Fly Bridge

- 3 STIDD helm chairs
- Jog steering
- Electrical panel starboard
- Large leather centerline sofa
- Chart storage and cabinetry port and starboard
- Additional storage below console
- Varnished teak decks
- Hanging locker to port
- Port and starboard access doors

Fly Bridge Electronics

- (2) B and G Hercules 2000 multi-gauge
- SEA 2ZS single sideband radio
- Furuno NavTex NX500 receiver
- Northstar 6000i plotter
- Motorola iridium sat phone
- (2) Furuno FAR-2XX7 series marine radar (2014)
- (2) CATVision monitors
- Raytheon RAY430 loudhailer
- (2) ICOM VHF IC-M127
- Furuno AIS universal
- Richie Fluxgate compass
- (7) ICOM BC-166
- Anschutz gyro ap PilotStar "D" with jog tiller
- Kahlenberg M-511 whistle control
- ABT Trac bow thruster
- (2) ACR searchlight
- Hewlett Packard AMD A8 computer with NavTek system and two screen monitors
- Weems and Plath barometer
- B&G alarm
- Navigation light panel
- KVH TracVision

- Port and starboard wing control stations

Engine Room

- Caterpillar Engines, C-32
- Port Engine Hours: 153
- Starboard Engine Hours: 160
- Generator 1: 187 Hours; 99kw Northern Lights
- Generator 2: 115 Hours; 99kw Northern Lights
- Oily water separator new 2014
- A/C gone through December 2015; 3 chillers
- Engines installed 2014
- Port access fiddley to main deck
- Headhunter Royal Fox sewage
- Alfa laval MM0304S-11
- 1 Main fire pump; 4 stations
- Atlas Marine shore power with tech power switchboard
- 75KVA Converter Classic III smartbox
- Engineers office in lazarette with systems monitors and large workshop with entrance door to swim platform
- Simplex shaft seals new 2014
- Fuel system all new
- Lapere fiddley station

Engine Room Machinery Refit

ENGINE & GEAR REPLACED

- New transmissions
- New exhaust system
- New propellers
- Shafts removed, inspected and straightened
- Die penetrant testing of shafts and props
- Cutlass bearings removed
- Exhaust disassembled
- Foundation and engine bed modifications
- Engine bed foundation painted and modified
- New engine mount installed
- Fuel piping modifications and connections for new engines
- Sea water piping modifications and connection for new engines
- Modification and installation of frames and shell plate
- Painting of frames and shell plating in way of hot work
- Interference installations in way of engine replacements

- Insulation installed
- Shaft and new propellers installed
- Shaft and gear alignment / connection
- New bottom coatings applied
- Prop speed applied
- Hull bottom repaired
- New bilge piping
- Fuel tanks coated

SEA CHEST REPLACED

- Interior and exterior coating applied to sea chest
- Modified and connected piping to sea chest
- Interference installations in way of sea chest

ELECTRICAL SYSTEM REFIT

- New generators: Northern Light 99Kw generators; 460v, 3 phase
- Installed new shore power motor operated circuit breakers
- New electrical modifications
- Replaced fore and aft shore power cables and connectors
- Installed new Sea Clean generator exhaust system

PIPING / AUXILIARY SYSTEMS

- Cleaned and painted potable water tanks
- Serviced forward Maxwell winch
- Serviced aft Maxwell winch
- Maintenance / service to bow thruster
- Oily water separator system
- Added A/C and heating to aft main deck
- PAINT, COATINGS AND CORROSION
- Entire hull painted
- Rub rails removed, cleaned, prepped, coated, and reinstalled
- Hull and running gear anodes serviced

Walk-Through Main Deck

Boarding CHEROSA from her starboard side there is a large double door entry into her foyer. The area is paneled in mahogany with black inlay. The foyer has a crema marble sole with black inlay complementing the wood perfectly. Opposite the entryway is a day head/powder room done completely with crema marble and black inlay sole with dark green marble countertop and gold fixtures. Forward of the powder room is the galley entrance and the entrance to the on-deck full-beam VIP stateroom. Through the companionway door there is an owner's office with a large sofa and computer desk. The inboard walls are bookshelves and the walls are fiddleback maple

with dark shadow insets. Another door separates the office from the VIP stateroom with sitting area and television viewing area. There is a large closet and drawer storage in this area. Two very large pocket doors separate the lounge area from the sleeping stateroom. There is a king-sized bed and another large closet and massive drawer space along the outboard side. The whole on-deck master suite is surrounded by natural light from CHEROSA's window line, but shoji screens are available for privacy. There is a television system on the aft bulkhead facing the bed and two night tables on the bedsides. The on-deck VIP bath with toilet and bidet are on the aft outboard side of the stateroom. The room is decorated in earth tone marble and accented by beautiful gold fixtures. There is an over-sized bathtub with massaging jets and a very large shower, again all with gold fixtures. There is a linen closet in the bath. Moving aft on the main deck past the powder room is a circular stair to access the staterooms below, a cabinet for display, and the stairwell to access the sky lounge. The dining area is semi-private with two huge windows and can accommodate 10 guests for meals. The area is paneled in mahogany and accent ceiling molding and an inset in the overhead with chandelier and rope lighting. On the aft side there is a large horizontal counter with storage below. The forward bulkhead is mirrored and has drawer storage below. The outboard bulkhead has floor to ceiling cabinetry with drawer storage and a door to the galley for easy serving access. Aft of the centerline cabinet is the main salon. The area is vast and ideal for entertaining and surrounded by six large windows. Forward of centerline is a sofa and all of the salon is decorated in earth tones that are extremely easy on the eye. On the starboard side is a large two-level bar with black marble top and three stools. On the bar top there is a sink with black marble and gold fixtures. Below the bar is a wine refrigerator, Marvel ice maker and Marvel wine cooler for 24 bottles. Outboard on the window line is bottle serving storage and below is additional cabinet storage. The bar area has a black marble floor. Aft of the bar is a cabinet with a marble top. On centerline are two double doors with large windows on each side that lead to CHEROSA's aft deck. Shoji screen doors can close the area to outside. On the port side of the salon is an over-sized sofa with occasional chair and large glass table and a cabinet that matches the starboard.

Salon / Main Deck

The salon is entered from the starboard side boarding area through wide double opening doors. In this area opposite is a day head/powder room, stairwell down to guest accommodations and stairwell to sky lounge, serving area galley and bridge. The floors are light marble with dark accents. Entering the main salon is a dining area that will accommodate a table with 10 to 12 guests. Forward of the seating area is a large built-in buffet with mirrored bulkhead and storage. To port is another cabinet that holds dishware and additional cabinetry aft of the table area with more storage. The main salon is aft of the separated dining area and is massive. On centerline and to port is seating for eight to ten guests and the starboard side has a bar with seating. There are Silhouette blinds with eight large windows giving this area fantastic natural light.

Aft Deck

The full-beam aft deck is heated and air conditioned and has an EZ2CY enclosure. On the salon

side there are matching teak topped cabinets, one with air handler and one that could easily house a refrigerator. The deck has a beautiful teak sole. On the aft end of the deck is a mounted dining area with a V teak table that will seat eight chairs and six on the banquette. The deck has two weather doors forward and aft access to the swim platform. The articulated passerelle is on the starboard side and there is a stairwell to the platform to port as well. There is watertight engine room access on the swim platform. The port forward door is access to the port waterway passage. Along this passage is found the engine room access door aft and galley access door forward. The starboard door is access to the starboard waterway passage and at the aft end is the bridge deck access and amidships are the salon entrance doors. Forward of these doors is a locker for cleaning supplies.

Galley

Entering the galley from the salon is a long granite topped counter prep area with double sink, InSinkErator disposal, KitchenAid compactor, window over and much cabinetry over and below. On the galley centerline is a large prep island with cabinetry and cutting area. Aft and inboard is the working galley. There is an oversized KitchenAid refrigerator/freezer with water and ice maker. Along the L-shaped granite counter with cabinets over and under houses a GE Profile microwave, Broan range hood, GE Profile 5-burner ceramic topped range and Frigidaire professional double oven. Forward and outboard are galley access door to port deck passage and a dining area that will accommodate eight guests. Opposite is a very large pantry and stair to the stew's galley and sky lounge deck. From the galley area there are 11 steps up to the stew's pantry, fly bridge, and sky lounge. The pantry has an earth-tone granite top with cabinets over and under. There is a large sink with Viking disposal, Frigidaire 4-burner ceramic cooktop, Marvel refrigerator and KitchenAid dishwasher. There is also a dumbwaiter that reaches the galley and sun deck. From the stew galley through a companionway door, there is a foyer with stairs to the main deck and access to the sky lounge and forward access to the fly bridge.

Guest Stateroom Foyer

At the bottom of 11 stairs from the entrance foyer lies the guest foyer accessing the lower guest staterooms and the full-beam lower master. The foyer deck is light marble with black accents. On the port forward bulkhead is a large linen closet. Aft of the linen closet is the guest laundry with Maytag 2000 series washer and dryer. There is a wet sink and hidden fold down ironing board and great counter areas for processing laundry. Opposite the laundry is a closet containing cleaning supplies and a large hanging locker. The foyer is again paneled in mahogany with dark shadow features.

Port En-Suite Twin Stateroom

Beautifully paneled in maple, the twin berths are arranged athwartship with port lights over the berths. The room has more than ample storage. There is a Dynex 32" television, DVD player,

and Direct TV in a cabinet with desk and chair aft. There are ceiling moldings and indirect lighting in the room. The carpet is high-end wool. The en-suite bath is light crema marble with gold fixtures both on the sink and shower.

Starboard Twin Stateroom

Maple paneling with shadow accents, the twin berths are arranged fore and aft. There is under berth storage and centerline storage. Outboard aft is a hanging locker. There is a Dynex television, DVD player, and Direct TV. The stateroom has a bath with shower and is done in crema marble with gold fixtures. It is the larger of the two twins.

Full-Beam Master Stateroom

The en-suite master below is massive. There are molding accents throughout. The wood paneling is maple and maple burl with mahogany shoji screens for privacy. The large port lights offer much natural light. On the forward bulkhead there are port and starboard his and hers walk-in closets and another large closet on the port side. On the starboard is a bulkhead-mounted 46" Samsung television Blu-Ray/DVD and Direct TV below in one of the five large drawers. Both port and starboard sides of the stateroom are cabinets with drawers their whole length. The port side also has a vanity. The centerline California king bed has a seating bench at the foot of the bed, bedside tables with lamps alongside and drawer storage below.

Master Bath

There are port and starboard entrance doors to the master bath. The portside "Ladies Bath" has earth-tone marble and cream colored paint accents. There is a toilet and bidet. The sink is white and the fixtures are gold. There is a robe cabinet in the room. In centerline is an oversized spa tub with marble surround and gold fixtures. Next to starboard is the shower. The entire bathroom is marble. The starboard side is the "Gentleman's Bath". There is much storage cabinetry in the area.

Forward Deck

On the passage forward from the bridge deck are six steps to the forward deck area. On the port side is an access door to the very large air conditioned bosun's locker and workshop. Starboard contains a watermaker and watermaker plumbing, shore cord reels (for forward shore cord), and 2 Maxwell windlass. There is a teak deck through the bridge to forward deck/bow. On centerline is an access hatch to the chain locker, storage, forward chocks, cleats, large deck lights, and seating.

Sky Lounge

The sky lounge is mahogany paneled with ceiling lighting accent feature, ceiling and paneling accents and is very spacious. The forward bulkhead has a 50" Panasonic television. The DVD and music system is housed in a beautiful mahogany wall unit. There are plantation shutters all around and built-in cabinetry everywhere. There are three possible seating areas. At the aft end of the sky lounge are the double doors with deck access and large windows on either side. At the forward port bulkhead is access to the bridge VIP stateroom. Entering the door inbound is a large crema marble bath with shower and gold fixtures. There is a large closet in the passage to the stateroom. The stateroom has an oversized queen berth and much drawer and closet space with large counters. There is a 32" Samsung television on the bulkhead and Direct TV and DVD player below. The room has large windows and shoji screens for privacy. Aft of the bed inboard is a corner desk. Out the sky lounge double doors there is a large covered deck with possibility for a dining area in front of a lounge that will seat 12 with table and chairs. On the door bulkhead forward are stairs to the sundeck port and wide starboard walkways to the bridge and forward deck. Aft of the centerline settee is the crane and jet tender and stairwell to the main deck. From the port side access sundeck stairwell is the sundeck entertaining area. Immediately up the stair is a large curved seating area. On centerline is a large curved wet bar with ice maker, refrigerator, and sink. Storage is everywhere on this deck. There is ample room on this deck for the freestanding furniture and occasional tables. Forward of the sunpad is an aft facing settee that will seat 12. There are two 12-person SOLAS life rafts. The bridge has six window panels, centerline green leather sofa, port and starboard cabinetry, chart storage beneath, and cabinetry over three Stidd helm chairs. All forward of helm seating is equipment console. Please see bridge electronics list. There are port and starboard wing doors to access port and starboard wing controls and forward stair from bridge to forward deck.

Sky Lounge Galley

Aft of the flybridge is a galley to assist with Sky Lounge and top deck service.

- Frigidaire four-burner cooktop
- Large stainless steel sink
- Samsung microwave oven
- KitchenAid dishwasher and undercounter Marvel refrigerator
- Dumbwaiter to all three decks
- Cabinetry above and below granite counters and backsplash
- Forward stairs lead to main galley for easy serving access

Boat Deck

Outside the double door for the sky lounge is a large entertaining area for alfresco dining. There is an eight-person dining table with chairs and an eight-person banquette seating area. Aft of this

area is the tender crane and fender. On the starboard side of the seating area is a cabinet that has a wet bar and below is a cabinet for a possible refrigerator.

Sun Deck

Portside stairs lead to CHEROSA's massive sun deck. Forward is a u-shaped settee and aft is a large sunbed. Aft is a large wet bar area with ice maker and beverage refrigeration with cabinetry for bottle storage. The entire area is surrounded with storage cabinetry and aft is another large seating area. The area could easily accommodate a Jacuzzi.

Swim Platform

- 3-Phase 460 on cable reels
- Nautical Structures passerelle with rail storage
- Oversized Bollardo port and starboard
- Safety railings

Salesman's Summary

CHEROSA has just undergone a \$4million USD engine and machinery space refit that ended in October 2014. She sailed from Ocean Marine Shipyard in Portsmouth, VA with a new 5-year ABS certification, new hull paint, new engines and generators, all new running gear, and all engine room machinery motors and pumps either rebuilt or new. CHEROSA was built for an experienced yachting family and has had light use over the course of her life. She is berthed permanently in Palm Beach and is only awaiting a new owner.

Exclusions

Owner's personal belongings.

Disclaimer

The Company offers the details of this vessel or yacht in good faith but cannot guarantee or warrant the accuracy of this information nor warrant the condition of the vessel. A buyer should instruct his representatives, agents, or his surveyors, to investigate such details as the buyer desires validated. This vessel or yacht is offered subject to prior sale, price change, or withdrawal without notice.

PHOTOS

Aft Deck



Aft Deck



Aft Deck



Day Head



VIP Office



VIP Office



VIP Office



VIP Stateroom



VIP Stateroom



VIP Stateroom



VIP Stateroom Head



VIP Stateroom Head



VIP Stateroom Head



Dining



Dining



Dining



Salon



Salon



Salon



Salon



Salon - Bar



Salon - Bar



Galley



Galley



Galley



Galley



Dinette



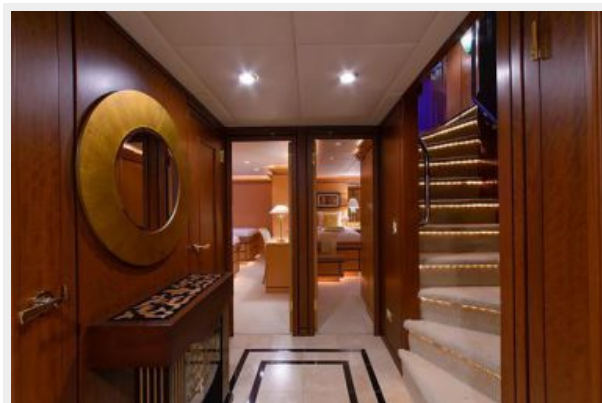
Dinette



Lower Companionway



Lower Companionway



Port Twin Stateroom



Port Twin Stateroom



Port Twin Stateroom Head



Port Twin Stateroom Head



Starboard Twin Stateroom



Starboard Twin Stateroom



Starboard Twin Stateroom Head



Starboard Twin Stateroom Head



Master Stateroom



Master Stateroom



Master Stateroom



Master Stateroom



Master Stateroom Head



Master Stateroom Head



Master Stateroom Head

Master Stateroom Head



Master Stateroom Head



Master Stateroom Head



Laundry



Laundry



Sky Lounge Companionway



Sky Lounge



Sky Lounge



Sky Lounge



Sky Lounge



Sky Lounge Galley



Sky Lounge Galley



Sky Lounge Stateroom



Sky Lounge Stateroom



Sky Lounge Stateroom



Sky Lounge Guest Head



Sky Lounge Guest Head



Port Passageway



Sky Lounge Aft Deck



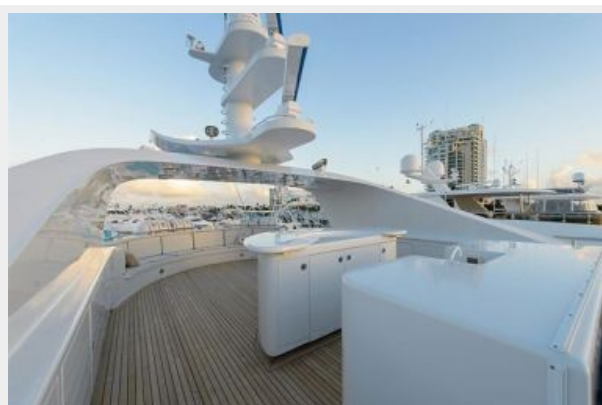
Sky Lounge Aft Deck



Sun Deck



Sun Deck



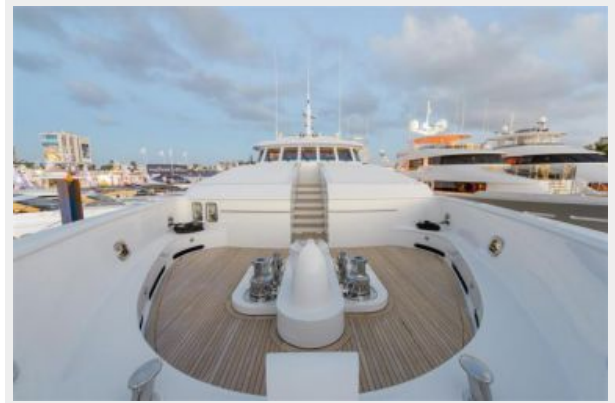
Sun Deck



Sun Deck



Bow



Engine Room



Engine Room



Engine Room



Engine Room



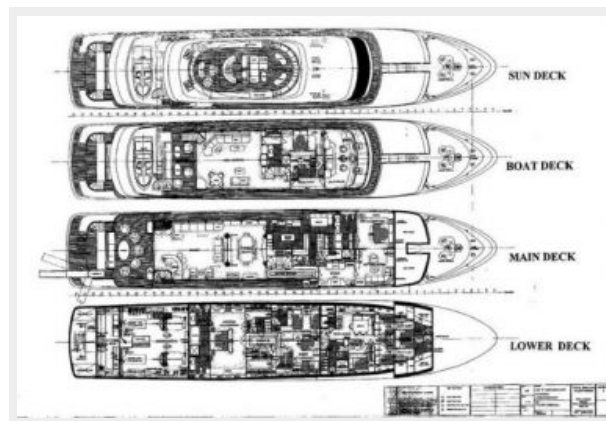
Engine Room



Engine Room



General Arrangement



CONTACTS

Andrey Shestakov, leading yacht broker of the sales department of Shestakov Yacht Sales Inc. Shestakov Yacht Sales Inc., the official representative of the Miami/Fort Lauderdale FL headquarters.

Contact details

Email:
andrey@shestakovyachtsales.com

Web: shestakovyachtsales.com/en/

Telephones

USA: **+1(954)274-4435**

Office hours

Monday – Saturday: **9:00 - 21:00 EDT**

Sunday: **closed**

Address



Harbour Towne Marina, 850 NE 3rd St,
STE 213, Dania, FL 33004