

## BRIO — HEESEN YACHTS



**Builder:** HEESEN YACHTS

**Year Built:** 1987

**Model:** Motor Yacht

**Price:** PRICE ON APPLICATION

**Location:** United States

**LOA:** 125' 0" (38.10m)

**Beam:** 24' 1" (7.34m)

**Min Draft:** 8' 0" (2.44m)

**Max Draft:** 8' 1" (2.46m)

**Cruise Speed:** 12 Kts. (14 MPH)

**Max Speed:** 16 Kts. (18 MPH)

Our experienced yacht broker, Andrey Shestakov, will help you choose and buy a yacht that best suits your needs **BRIO — HEESEN YACHTS** from our catalogue. Presently, at Shestakov Yacht Sales Inc., we have a wide variety of yachts available on our sale's list. We also work in close contact with all the big yacht manufacturers from all over the world.

If you would like to buy a yacht **BRIO — HEESEN YACHTS** or would like help answering any questions concerning purchasing, selling or chartering a yacht, please call **+1(954)274-4435**

# TABLE OF CONTENTS

TABLE OF CONTENTS	2
SPECIFICATIONS	3
Overview	3
Basic Information	4
Dimensions	4
Speed, Capacities and Weight	4
Accommodations	5
Hull and Deck Information	5
Engine Information	5
DETAILED INFORMATION	6
Welcome to Brio!	6
Machinery	7
Communication System	7
Navigation Systems	7
Entertainment System	8
Galley and Laundry Equipment	8
Crew Quarters	9
Deck Equipment	9
Security, Fire Fighting and Safety Equipment	9
Exclusions	10
Disclaimer	10
PHOTOS	11
CONTACTS	20
Contact details	20
Telephones	20
Office hours	20
Address	20

# SPECIFICATIONS

---

## Overview

---

Between two extensive refits in 2009/2010 and most recently 2015, Brio has benefited from the extensive knowledge and financial investment of a highly experienced, multi-yacht owner and his crew, she shows as 'Simply immaculate' and is ready for private or commercial use immediately in all respects. A full refit report is available on request however some of the highlights include; decks extended, interior completely renewed in 2010 and refreshed again in 2015, brand new paint in 2013, new hull sections under the engine room, engine and generator overhauls, complete 5 yr ABS Survey, stainless handles replaced throughout, new water makers, AC serviced, much of the engine room piping either renewed or serviced, new carpet throughout, interior and exterior teak sanded or varnished all new exterior canvas and cushions not to mention upgraded and modern AV throughout. Brio literally shows as new and represents an exceptional opportunity for the discerning client looking for a 'Dutch pedigree' yacht in pristine condition that has crossed the Atlantic on her own bottom, can cruise economically and due to her shallow draft still find those 'hard to reach' anchorages that other yachts of her size cannot find. Layout European inspired, chic interiors feature rich wood paneling and cabinetry, creamy white furnishings and carpeting, and bold red accent pieces that lend energy to elegance. Unobstructed design and a flexible main salon layout creates the ideal flow of circulation, adaptable to an intimate gathering or entertaining a more extensive guest list. The furnishings, finished in soft and supple white leather are elegant, understated and luxurious; the dining salon is furnished in a modern, comfortable style providing formal or casually elegant dining for up to eight guests. Complimented by the main salon bar and surrounding over-sized windows the main deck is thoughtfully arranged to create an inviting, warm, elegant space within which to entertain or simply relax. The comfortable skylounge, with magnificent views, has a dedicated office area and entertainment center, unparalleled for casual, indoor relaxation. Again with surrounding over-sized windows this cozy but vibrant space was thoughtfully designed to create an adaptable space within which to work, relax or entertain. Five en-suite staterooms luxuriously accommodate up to 12 guests, featuring an on-deck master, a lower deck master, an additional queen stateroom aft and two twin cabins with Pullman berths. All are equipped with flat screen TV's, Apple TV, DVD players, iPod and iPhone docking stations. All staterooms have been refurbished and/or redesigned to create individually unique and modern spaces with absolute luxury first and foremost in mind. The luxurious, main deck master suite is outfitted with king bed, comfortable lounging area to port and office to starboard. Storage is plentiful in handcrafted drawers, cabinets and closet. The master bathroom features dual, sculpted granite sinks, floor-to-ceiling glassed-in shower, bathtub with handheld shower fixture, and toilet and bidet enclosure. BRIO also boasts voluminous spaces for superb outdoor living. The aft extension on the main deck features shaded built-in dining for 12 guests to dine Alfresco. Full walk-around decks provide easy access to the bow seating area to accommodate 2 to 4 guests. Gracious spiral stairways

to port and starboard descend to a very generous swim platform. The expanded bridge deck provides crane and tender storage but when the tender is launched a perfect space for entertaining or sky-lounge deck lounging is created. The new 'tender and toy free' sundeck benefits from an easy flowing layout and the perfect combination of sun and shade. With elegant teak sole there is banquette seating forward with a raised observation bench at center that adjusts to fore or aft viewing positions. Centered under protective shade, the fully-equipped U-shape bar seats six guests and the large Jacuzzi is flanked by vast thickly cushioned sun pads. For water sports pleasure, the yacht is equipped with the most sought after gear and toys. \*\*\*NOT FOR SALE TO US RESIDENTS WHILE IN US WATERS \*\*\*

## Basic Information

---

<b>Category:</b> Motor Yacht	<b>Model Year:</b> 1987
<b>Year Built:</b> 1987	<b>Refit Year:</b> 2015
<b>Country:</b> United States	<b>Fly Bridge:</b> Yes
<b>Cockpit:</b> Yes	

## Dimensions

---

<b>LOA:</b> 125' 0" (38.10m)	<b>Beam:</b> 24' 1" (7.34m)
<b>Min Draft:</b> 8' 0" (2.44m)	<b>Max Draft:</b> 8' 1" (2.46m)

## Speed, Capacities and Weight

---

<b>Cruise Speed:</b> 12 Kts. (14 MPH)	<b>Max Speed:</b> 16 Kts. (18 MPH)
<b>Gross Tonnage:</b> 257 Pounds	<b>Water Capacity:</b> 1400 Gallons
<b>Fuel Capacity:</b> 7000 Gallons	

## Accommodations

Total Cabins: 5	Total Berths: 9
Sleeps: 12	Total Heads: 7
Captain Cabin: True	Crew Cabin: 4
Crew Berths: 7	Crew Sleeps: 7

## Hull and Deck Information

Hull Material: Aluminum	Hull Configuration: Semi-Displacement
Hull Designer: Mulder	Exterior Designer: Heesen
Interior Designer: Artline	

## Engine Information

Engines: 2	Manufacturer: Deutz
Model: TBD 616V16	Engine Type: Inboard
Fuel Type: Diesel	

---

## DETAILED INFORMATION

---

### Welcome to Brio!

---

Between two extensive refits in 2009/2010 and most recently 2015, Brio has benefited from the extensive knowledge and financial investment of a highly experienced, multi-yacht owner and his crew, she shows as 'Simply immaculate' and is ready for private or commercial use immediately in all respects. A full refit report is available on request however some of the highlights include; decks extended, interior completely renewed in 2010 and refreshed again in 2015, brand new paint in 2013, new hull sections under the engine room, engine and generator overhauls, complete 5 yr ABS Survey, stainless handles replaced throughout, new water makers, AC serviced, much of the engine room piping either renewed or serviced, new carpet throughout, interior and exterior teak sanded or varnished all new exterior canvas and cushions not to mention upgraded and modern AV throughout. Brio literally shows as new and represents an exceptional opportunity for the discerning client looking for a 'Dutch pedigree' yacht in pristine condition that has crossed the Atlantic on her own bottom, can cruise economically and due to her shallow draft still find those 'hard to reach' anchorages that other yachts of her size cannot find. Layout European inspired, chic interiors feature rich wood paneling and cabinetry, creamy white furnishings and carpeting, and bold red accent pieces that lend energy to elegance. Unobstructed design and a flexible main salon layout creates the ideal flow of circulation, adaptable to an intimate gathering or entertaining a more extensive guest list. The furnishings, finished in soft and supple white leather are elegant, understated and luxurious; the dining salon is furnished in a modern, comfortable style providing formal or casually elegant dining for up to eight guests. Complimented by the main salon bar and surrounding over-sized windows the main deck is thoughtfully arranged to create an inviting, warm, elegant space within which to entertain or simply relax. The comfortable skylounge, with magnificent views, has a dedicated office area and entertainment center, unparalleled for casual, indoor relaxation. Again with surrounding over-sized windows this cozy but vibrant space was thoughtfully designed to create an adaptable space within which to work, relax or entertain. Five en-suite staterooms luxuriously accommodate up to 12 guests, featuring an on-deck master, a lower deck master, an additional queen stateroom aft and two twin cabins with Pullman berths. All are equipped with flat screen TV's, Apple TV, DVD players, iPod and iPhone docking stations. All staterooms have been refurbished and/or redesigned to create individually unique and modern spaces with absolute luxury first and foremost in mind. The luxurious, main deck master suite is outfitted with king bed, comfortable lounging area to port and office to starboard. Storage is plentiful in handcrafted drawers, cabinets and closet. The master bathroom features dual, sculpted granite sinks, floor-to-ceiling glassed-in shower, bathtub with handheld shower fixture, and toilet and bidet enclosure. BRIO also boasts voluminous spaces for superb outdoor living. The aft extension on the main deck features shaded built-in dining for 12 guests to dine Alfresco. Full walk-around decks provide easy access to the bow seating area to accommodate 2 to 4 guests. Gracious spiral stairways

to port and starboard descend to a very generous swim platform. The expanded bridge deck provides crane and tender storage but when the tender is launched a perfect space for entertaining or sky-lounge deck lounging is created. The new 'tender and toy free' sundeck benefits from an easy flowing layout and the perfect combination of sun and shade. With elegant teak sole there is banquette seating forward with a raised observation bench at center that adjusts to fore or aft viewing positions. Centered under protective shade, the fully-equipped U-shape bar seats six guests and the large Jacuzzi is flanked by vast thickly cushioned sun pads. For water sports pleasure, the yacht is equipped with the most sought after gear and toys.

---

## Machinery

---

- (2) Deutz TBD 616V16 diesels @ 1527 hp each. Engines new in 2002.
- Reintjes WVS832 2.52:1 gear boxes for main engines
- (2) 65 kW Northern Lights generators both rewound in 2015
- 208V/60 Hz output
- 4.8 gal/hr/ 18.2 liters/hr generator fuel consumption
- 20,000 BTU air conditioning, 2 chillers, 1 new in 2015
- Nautilus/ Searo watermakers- 2,800 US gallons per day
- (2) Naiad Datum stabilizers rebuilt in 2015
- Naiad bow thruster
- Electro-Hydraulic steering system
- Westfalia Centerfuge fuel separator & filtration & Racor filters
- (2) 110V Staingray fresh water system
- Atlas shorepower Spa3 new in 2009
- Jets Head System
- Hamann Marine Sanitary System

---

## Communication System

---

- Nera F77 satellite phone
- KVH Mimi M satellite phone
- Panasonic Hybrid telephone system with 14 stations
- (2 ) Icom fixed VHF
- Off ships phone system intercome

---

## Navigation Systems

---

- (2) Furuno radars 1 New 2015
- (1) Sperry Marine Gyro compass
- Sestrel 6" Magnetic Compass

- **Simrad Satellite HS-52 compass**
- **(1) Simrad Autopilot**
- **(1 )Furuno AIS**
- **(1) Furuno Depth sounder**
- **(1) Furuno GPS**
- **In Ship's Office computer with printer**
- **NobeiTec on Furuno NavNet and ship's monitor plotter**
- **B&G Hydra 2000 Wind/Speed Log**
- **Furuno NX-700 Navtex**
- **Simon/Palladium Technologies integrated monitoring**
- **Kobelt Control System (2013)**

---

## **Entertainment System**

- **Apple TV (Skylounge)**
- **55" Sony Bravia flat screen(Skylounge)**
- **Apple TV (Guest Staterooms)**
- **Sony Bravia flat screens (Guest Staterooms)**
- **Apple TV (Crew Mess)**
- **Bravia flatscreen(Crew Mess)**
- **Bose Life Style III theatre entertainment system (Skylounge)**
- **Sony DVD player (Guest Staterooms)**
- **Sony DVD player (Crew Mess)**
- **Sony Bravia CCTV repeater**
- **Bose Free space amplifiers with Apple Airport Express receivers (Salon)**
- **Bose 151 speakers (Salon)**
- **Fusion Outdoor audio system with Bose speakers and Apple Airport Express receiver (Sundeck)**
- **Sea-Tel DAC2200 Sat TV ACU on board for our Direct TV services.**

---

## **Galley and Laundry Equipment**

- **Electrolux 30" Double Wall oven wNVave-Touch controls (Galley)**
- **Electrolux Icon 5-burner electric cooktop (Galley)**
- **Electrolux microwave (Galley)**
- **T35 True reach-in refrigerator (Galley)**
- **Under counter built-in freezer (Galley)**
- **Kitchenaid Commercial dishwasher (Galley) 2015**
- **Microwave (Crew Mess)**
- **Full size fridge/freezer (Crew Mess)**
- **True refrigerator and True freezer (Control room)**
- **Whynter Dual Zone 32 bottle wine fridge (Salon)**



- Electrolux beverage fridge (Salon)
- Breville Barista Express coffeemaker (Salon)
- Vitrifigo Hydro automated icemaker (Salon)
- (2) Miele Professional washers
- (2) Miele Professional dryers
- (1) Rowenta pressure iron & steamer
- Breville Barista Express coffeemaker
- Vitrifigo I M-CLP Hydro automated icemaker
- Whynter Dual Zone 32 bottle wine refrigerator
- Electolux EI24BC65GS beverage refrigerator
- New Chest freezer 2015

## Crew Quarters

---

Spacious en-suite cabins and dedicated lounge create a cozy environment with the comforts of home, allowing the crew pleasant relaxation when not on duty. (3) Twin cabins with en-suite head and shower. Crew lounge. Captain's double cabin on the bridge deck.

## Deck Equipment

---

- Steen dual horizontal gypsy anchor windlass system with capstans
- (2) Stockless Navy anchors
- 1/2" anchor chain
- Sangiunetti Chiavari 4400 lb. davit (2009)
- Besenzoni Passerelle integral to the hull swim platform
- Underwater lights x 6

## Security, Fire Fighting and Safety Equipment

---

- Custom CCTV System
- (4) Cameras
- Wheelhouse monitor
- Fire Control System Consilium 2009
- 208V fire/bilge pump
- 110V fire/bilge pump
- 24V fire/bilge pump
- (2) Fire fighting suits
- (2) Breathing apparatus
- (5) Fire hydrants
- (2) 10m hose
- (2) 20m hose

- **Honda 4.5 hp crash pump with hose**
- **Handheld fire extinguishers throughout**
- **(2) CO2**
- **Simon/Palladium Technologies integrated monitoring alarms**
- **(2) EEBD**
- **Safety Equipment**
- **(2) 20-person life rafts**
- **(25) life jackets(1) EPIRBS**
- **(20) Flares**
- **First Aid Supply Kit**
- **(2) SOLAS inflatable life jackets**
- **(2) ACR GMDSS portable radios**
- **(20) Ascotherm Mk IV TPA (Thermal Protective Aids)**
- **AED**

---

## **Exclusions**

Owner's personal belongings.

---

## **Disclaimer**

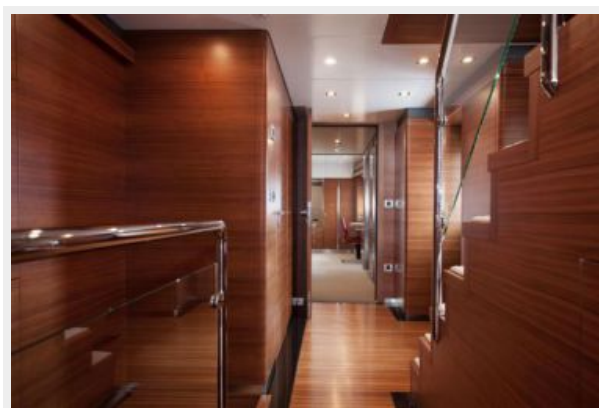
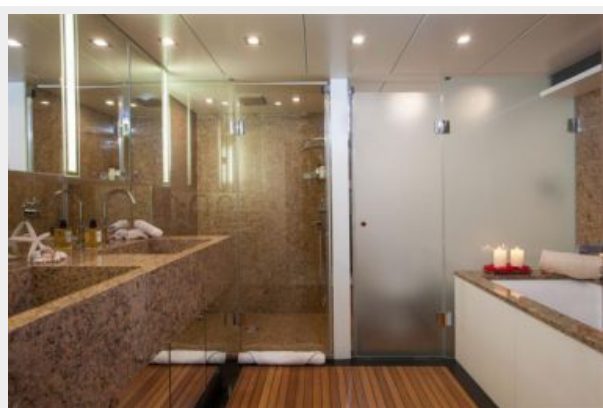
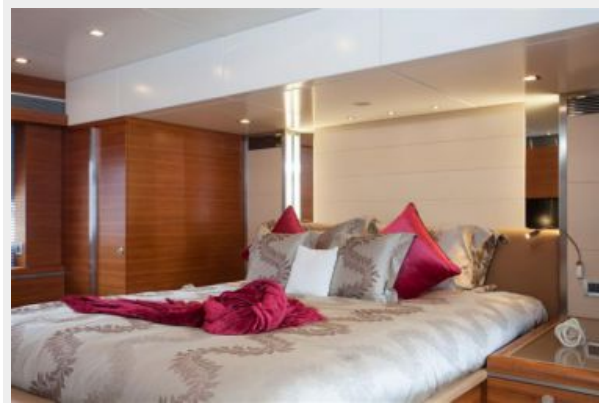
The Company offers the details of this vessel or yacht in good faith but cannot guarantee or warrant the accuracy of this information nor warrant the condition of the vessel. A buyer should instruct his representatives, agents, or his surveyors, to investigate such details as the buyer desires validated. This vessel or yacht is offered subject to prior sale, price change, or withdrawal without notice.

# PHOTOS



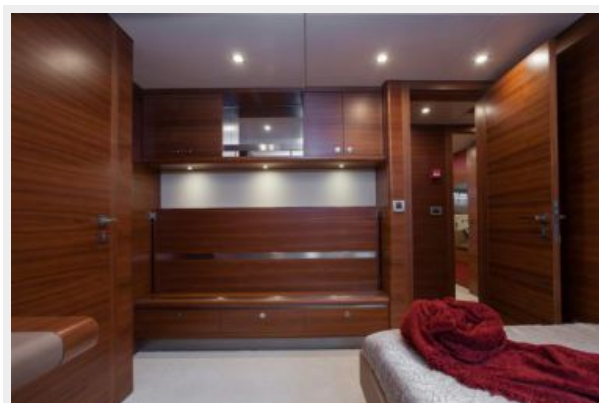
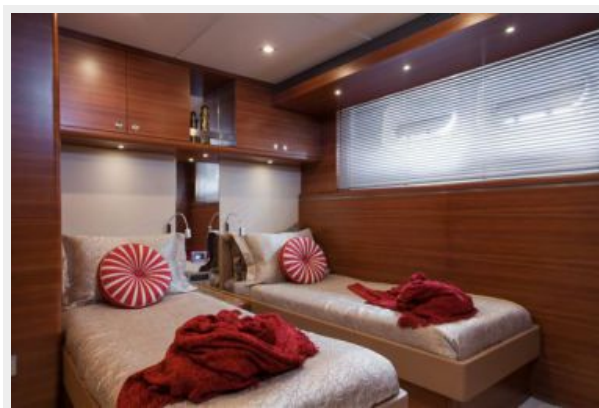


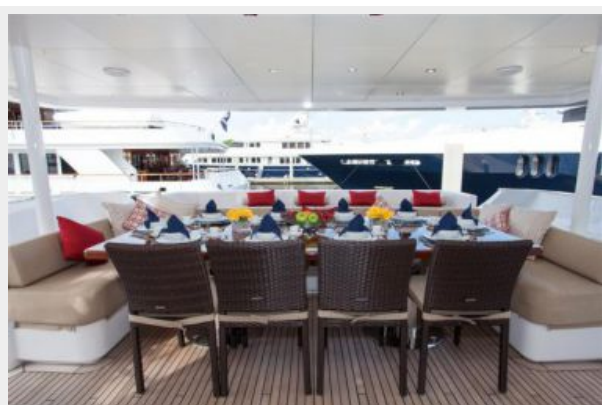








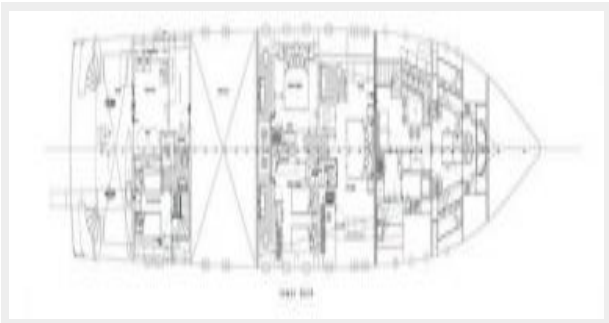
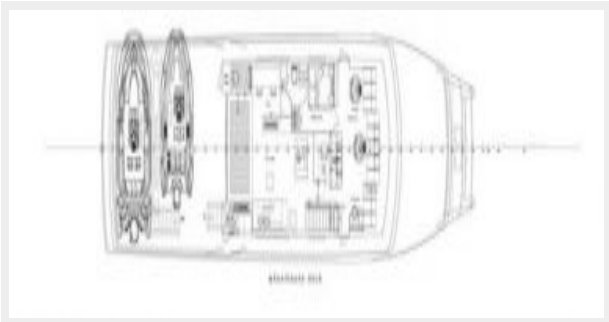
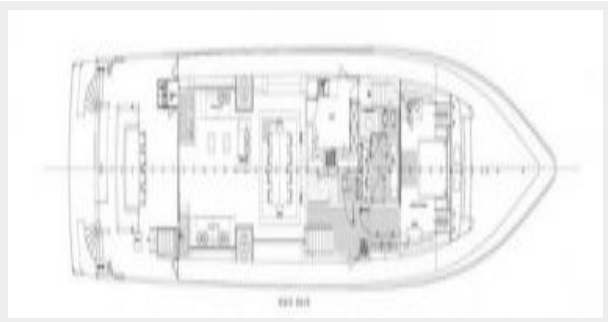
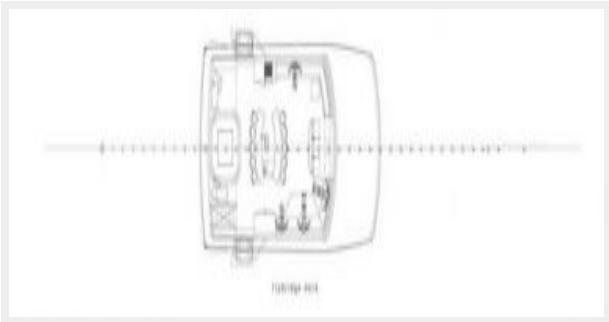












# CONTACTS

---

Andrey Shestakov, leading yacht broker of the sales department of Shestakov Yacht Sales Inc. Shestakov Yacht Sales Inc., the official representative of the Miami/Fort Lauderdale FL headquarters.

## Contact details

---

Email: **andrey@shestakovyachtsales.com**

Web: [shestakovyachtsales.com/en/](http://shestakovyachtsales.com/en/)

## Telephones

---

USA: **+1(954)274-4435**

## Office hours

---

Monday – Saturday: **9:00 - 21:00 EDT**

Sunday: **closed**

## Address

---



Harbour Towne Marina, 850 NE 3rd St,  
STE 213, Dania, FL 33004