

SOUTHERN COMFORT — ATLANTIC



Судостроитель: ATLANTIC

Год постройки: 1983

Модель: Траулер

Цена: **ЦЕНА ЯХТЫ ПО ЗАПРОСУ**

Местонахождение: United States

Длина общая: 36' 7" (11.15m)

Мин. осадка: 3' 3" (0.99m)

Крейс. скорость: 8 Kts. (9 MPH)

Макс. скорость: 9 Kts. (10 MPH)

Купить **Southern Comfort — ATLANTIC** а также выбрать подходящую вам яхту из нашего каталога яхт вам поможет опытный яхтенный брокер Андрей Шестаков. На сегодняшний день компания **Shestakov Yacht Sales Inc.** имеет большое количество яхт в собственном списке продаж, а также тесно сотрудничает со всеми крупными яхтенными производителями по всему миру.

Для того чтобы купить яхту **Southern Comfort — ATLANTIC** а также проконсультироваться по любому вопросу связанному с покупкой, продажей, чартером яхт позвоните по телефону **+7(918)465-66-44**.

ОГЛАВЛЕНИЕ

| | |
|-------------------------------|----|
| ОГЛАВЛЕНИЕ | 2 |
| ХАРАКТЕРИСТИКИ | 3 |
| Обзор | 3 |
| Основная информация | 3 |
| Размеры | 3 |
| Скорость, вместимость и масса | 4 |
| Размещение | 4 |
| Корпус и палуба | 4 |
| Информация о двигателе | 4 |
| ПОДРОБНОЕ ОПИСАНИЕ | 5 |
| Accommodations | 5 |
| Galley | 5 |
| Deck Equipment | 5 |
| Electronics | 6 |
| Electrical Equipment | 7 |
| Mechanical | 8 |
| Remarks | 9 |
| Исключения | 10 |
| Отказ от ответственности | 10 |
| ФОТОГРАФИИ | 11 |
| КОНТАКТЫ | 16 |
| Контактная информация | 16 |
| Телефоны | 16 |
| Время работы | 16 |
| Адрес | 16 |

ХАРАКТЕРИСТИКИ

Обзор

This may be the only Atlantic 37 ever built with a single diesel engine. She burns only 2.4 gph at 7.5 knots (9 MPH) and has a rarely seen "get home" system which allows the generator to power the boat if the main engine fails (it never has). What's even more remarkable is the immaculate condition of this boat. A well equipped and maintained 37' Atlantic Trawler built in Florida in 1983, she has an economical, reliable Ford Lehman SP135 engine. This boat has been continuously updated and improved, including hull and topsides Awlgripped paint, new Garmin electronics and a side power bow thruster. The boat is offered in turn-key condition with numerous spare parts.

You'll find Taiwan-built trawlers for less, but you'll have to deal with leaking teak decks, rusting black iron fuel tanks, extensive exterior teak maintenance, and other notorious expenses and maintenance issues.

In contrast, the Atlantic Yachts Trawler is known for its spacious accommodations which many have compared her roominess to a 40' boat. Come take a look at the quality construction, aluminum fuel and water tanks, and almost no exterior teak. Yet, you benefit from extensive interior teak, giving it a warmer, richer look and feel than many of its U.S. built contemporaries.

Основная информация

Тип судна: Траулер

Модельный год: 1983

Год постройки: 1983

Страна: United States

Размеры

Длина общая: 36' 7" (11.15m)

Длина палубы: 36' 7" (11.15m)

Мин. осадка: 3' 3" (0.99m)

Скорость, вместимость и масса

Крейс. скорость: 8 Kts. (9 MPH)

Макс. скорость: 9 Kts. (10 MPH)

Водоизмещение: 22000 Pounds

Вместимость воды: 200 Gallons

Объем топливного бака: 350 Gallons

Размещение

Всего кают: 2

Всего ком. состава: 1

Корпус и палуба

Материал корпуса: Fiberglass

Информация о двигателе

Двигатели: 1

Производитель: Ford Lehman

Тип двигателя: Inboard

Тип топлива: Diesel

ПОДРОБНОЕ ОПИСАНИЕ

Accommodations

Sleeps 4 owners and guests in 2 staterooms plus 1 settee berth for a total of 5 berths.

Each stateroom has a private head with separate shower stall in the guest head and tub/shower in the master. Both staterooms provide a comfortable night's sleep with screened overhead hatches, fans mounted above the beds, in-room reverse-cycle A/C vents, plus sun screening hatch covers for sleeping late. Desirable down galley. Salon has large windows with custom shades and custom L shaped settee with storage under and bookshelves at each end. A hi low teak table can be raised and lowered hydraulically. There's a full lower station and doors port and starboard for easy deck access and great cross ventilation. Master stateroom is aft with centerline queen berth, 15 drawers, two large hanging lockers, Hella fans, and a thick custom mattress. Guest stateroom has an offset double berth and numerous storage compartments. There is parquet flooring throughout. All opening hatches, ports and windows are screened.

Galley

The galley is down to port and has a full sized Norcold refrigerator/freezer. There is a microwave oven above the three burner electric stove with oven and a stainless steel sink. Pressure hot and cold fresh water. There is abundant galley storage above and below the countertops and a convenient breakfast bar just above the fridge in the salon with storage underneath.

Southern Comfort comes equipped with dishes, flatware, cutlery, pots and pans, toaster, coffee pot and a folding dish rack.

Norcold Refrigerator

Microwave oven new 2012

Pressure hot and cold fresh water

Princess 3 burner elect. stove/oven

Stainless sink

Dockside fresh water system

Deck Equipment

Two anchors: Rocna primary w/200 ft 5/16" chain, # 33 Bruce w/60 ft chain/150 5/8" rode

Foredeck salt water washdown with new pump in 2011

Simpson Lawrence windlass w/flybridge remote and foot controls

Coast Guard safety package

Navigation lights

Radar mast w/tabernacle and spreader lights

Two aluminum deck chairs with cushions and backrest

Dual Trumpet horn new 2012

Bimini with full enclosure

Replacement 9'6" AB Hard bottom inflatable dinghy 2015 and almost new Tohatsu 15 HP 4-cycle outboard motor

Outboard Motor rotates upright while still attached to dinghy

Epirb new 2014

Swim platform with folding stainless ladder and fresh water shower

Life ring, two boat hooks, fenders, fender rack and a large Polyform A-6 bow fender

A complete set of dock lines and spare lines

2 Deck boxes on cabin top

Magna SS BBQ grill on stern rail

Windshield covers

Electronics

Upper Helm: (all Garmin equip new in 2009, & radar replaced under warranty 2011)

Garmin 4212 chart plotter GPS combo

Garmin GMS 10 network port expander

Garmin GMR 24 Radar

Garmin GSD 22 sounder/fish finder

Garmin GXM 51 XM satellite weather

Robertson AP11 autopilot w/control heads at both stations interfaced to Garmin

Standard Horizon GX2100 VHF w/DSC & AIS receiver interfaced to Garmin *new 2012*

Kenwood AM/FM receiver/CD w/USB & aux in *new 2012*

Lower Helm:

Horizon DS30 depth

ICOM M127 VHF

Dual XM8150 AM/FM receiver w/Bluetooth, IPOD docking station, & Aux in connection

Elect. Windshield wipers

Other:

Bose speakers in main salon

Tasco 36 Offshore 7 x 50 binoculars w/compass

HP laptop w/USB GPS running Cap'n Mosaic chart plotting software

Wave RV wifi high power booster antenna

26" Sharp LCD TV w/dvd player

Shakespeare powered TV/FM antenna under flybridge console

3 speed Cafrano fan at lower helm

Electrical Equipment

AC electrical system

Two 30 amp shore power cords plus a 50 to 30 amp splitter and a 15 amp to 30 amp adapter

8 KW Westerbeke generator with 1004 hours, plus a Group 24 starting battery

A Raycor 500 fuel filter for generator

Cotex 1500 watt Pure Sine wave inverter with plugs in galley and aft cabin

Two Marincor shore power inlets and combo cable TV/Phone inlet. Each inlet is protected with a separate breaker per ABYC

New Professional Mariner 1250P battery charger 2015

DC electrical system

50 amp Pro-mariner 3 stage battery charger

Battery parallel switch

GFI outlet in galley

Balmar 115 amp alternator with ARS-5 multi-stage voltage regulator, new 2011

Spreader lights on mast

Six trojan deep cycle house batteries (700AH)

Xantrex Link Lite precision battery monitor at helm

Multiple DC outlets throughout cabin and flybridge

New freshwater pump (2015), water filter system

Mechanical

Single Ford Lehman diesel SP135

135 HP with 4960 hours

Engine room insulation

Fresh water cooling

RH 4 blade 22" prop with line cutter new

Spare prop

Hydraulic steering

Belt driven hydraulic Sunstrand "get me home" driven system

which can be run by the genset

Side Power SM75TI bow thruster with joystick controls at both stations

Portable oil change system with pump

Two Cruise Air 16000 BTU A/C units with

reverse cycle heat and SMX digital controls

Fuel and oil filters

Raw water strainers

Borg Warner Velvet Drive Transmission 1.91:1

Emergency engine stop

Fuel shut off valves

2 automatic bilge pumps

Fireboy FE241 automatic clean agent fire extinguisher

Racor 900 series fuel filter w/dual bypass and fuel polishing system

Engine has new hoses, heat exchanger and oil cooler '08

Transmission has all new hoses and oil cooler '08

Generator had all new hoses, belt and heat exchanger 2008

Many spares for engine including new injectors, filters and gaskets

New Raritan Electrasan toilet treatment systems 2014

New Jabsco toilets, motors and macerators 2015

30 gal holding tank w/macerator

New Norcold chest-style refer/freezer 12/120 volts 2015

Water - counter water gauge new 2012

Two automatic bilge pumps plus a High Water bilge with alarm

6 gallon Raritan water heater

Remarks

Powerboat Guide describes the Atlantic 37 as having *“earned an enviable reputation for quality construction, sea kindly handling, and strong resale values. Teak woodwork is finished to a high standard.”*

This hard-to-find single-engine model of the Atlantic 37 enjoys half the fuel burn of its twin-engine

sister-ships. It benefits from greater range, lower maintenance costs, and added space in the engine room with only a 1.5 knot speed reduction. The get-me-home system provides the security of two engines, and the bow thruster allows for easy dockside handling.

The Ford Lehman has an enviable reputation for long life and reliability with many known to exceed 20,000 hours of service life. This engine has received meticulous maintenance and oil changes as documented by the maintenance log. In 2011 the engine, transmission, and generator were surveyed by a professional with excellent oil analysis results. The maintenance log, survey, and oil analysis may be inspected with the boat.

Southern Comfort has served previous owners, taking them to the Bahamas, and completing a one-year Great Loop trip.

Having enjoyed the cruising lifestyle aboard Southern Comfort, they're surrendering her for a cruising sailboat for a world circumnavigation.

Tabernacling the mast gives her a 16-foot bridge clearance, allowing her to travel the bridge-strewn ICW more quickly than other vessels. With over a 1000 nautical-mile range, island hopping to the Caribbean won't be a problem. If you are looking for a comfortable live-aboard cruising Trawler that's economical to operate and ready to go now, this is the boat for you.

Southern Comfort is available for viewing on the water in a covered slip at Dog River Marina, Mobile, Alabama.

Исключения

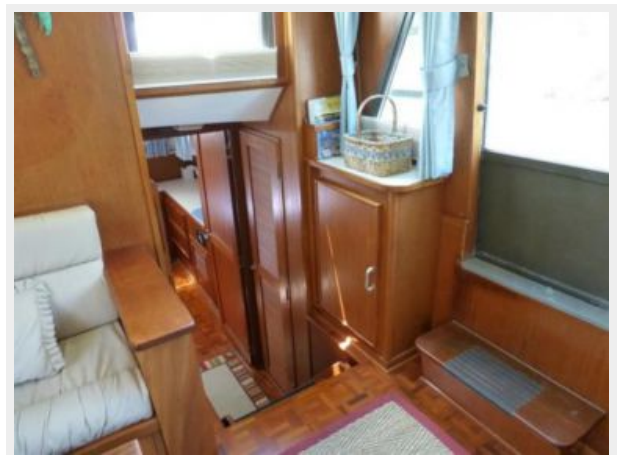
При продаже яхты исключаются личные вещи владельца.

Отказ от ответственности

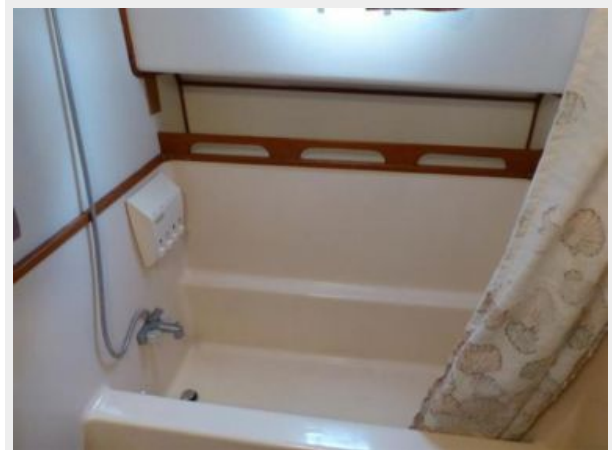
Компания предоставляет описание судна или яхты добросовестно, но не может гарантировать точность этой информации, а также не ручается за техническое состояние. Покупатель должен проинструктировать своих агентов или оценщиков исследовать представленную информацию более подробно, по собственному желанию. Продажа судна или яхты, изменение цены или снятие с продажи будет происходить без предварительного уведомления.

ФОТОГРАФИИ











КОНТАКТЫ

Андрей Шестаков (Andrey Shestakov) – ведущий яхтенный брокер отдела продаж яхт и судов компании Shestakov Yacht Sales Inc. Официальный представитель Shestakov Yacht Sales Inc. для русскоговорящих клиентов в центральном офисе компании в Майами/Форт Лодердейл/Флорида/США.

Контактная информация

Email: andrey@shestakovyachtsales.com

Web: shestakovyachtsales.com

Телефоны

Краснодарский край: **+7(918)465-66-44**

США, Майами, Флорида: **+1(954)274-4435**

Время работы

Понедельник – Суббота: **9:00 - 21:00**
EDT

Воскресенье: **Закрето**

Адрес



Harbour Towne Marina, 850 NE 3rd St,
STE 213, Dania, FL 33004