

FRANCY FREE — MCKINNA



Builder: MCKINNA

Year Built: 2002

Model: Cruiser

Price: PRICE ON APPLICATION

Location: United States

LOA: 65' 0" (19.81m)

Beam: 17' 3" (5.26m)

Max Draft: 3' 7" (1.09m)

Our experienced yacht broker, Andrey Shestakov, will help you choose and buy a yacht that best suits your needs **Francy Free — MCKINNA** from our catalogue. Presently, at Shestakov Yacht Sales Inc., we have a wide variety of yachts available on our sale's list. We also work in close contact with all the big yacht manufacturers from all over the world.

If you would like to buy a yacht **Francy Free — MCKINNA** or would like help answering any questions concerning purchasing, selling or chartering a yacht, please call **+1(954)274-4435**

TABLE OF CONTENTS

TABLE OF CONTENTS	2
SPECIFICATIONS	3
Basic Information	3
Dimensions	3
Speed, Capacities and Weight	3
Accommodations	3
Hull and Deck Information	3
Engine Information	3
DETAILED INFORMATION	4
Vessel Information	4
Exclusions	7
Disclaimer	7
PHOTOS	8
CONTACTS	13
Contact details	13
Telephones	13
Office hours	13
Address	13

SPECIFICATIONS

Basic Information

Category: Cruiser

Model Year: 2003

Year Built: 2002

Country: United States

Dimensions

LOA: 65' 0" (19.81m)

Beam: 17' 3" (5.26m)

Max Draft: 3' 7" (1.09m)

Speed, Capacities and Weight

Displacement: 70000 Pounds

Water Capacity: 280 Gallons

Holding Tank: 100 Gallons

Fuel Capacity: 1200 Gallons

Accommodations

Total Cabins: 3

Total Heads: 2

Hull and Deck Information

Hull Material: Fiberglass

Engine Information

Engines: 2

Manufacturer: Caterpillar

Model: 3406E

DETAILED INFORMATION

Vessel Information

Deck/Hull

- 1000lb Davit
- Tender Chalks
- Hot/Cold Shower (Transom)
- Cockpit Engine Controls
- Wet Bar With Stainless Sink
- U-Line Ice Maker
- Electric Grill
- Flybridge Ladder (Retractable)
- Port & Stbd Cockpit door
- Transom Door
- Recessed Anchor Locker
- Maxwell 3500 Windless w/200' Chain
- Fresh Water Washdown (Anchor Locker)Transom Door
- Fore Deck Locker Storage

Flybridge

- Custom Hard Top
- Isinglass Enclosure
- Custom Hinged Radar/Trac-Vision Mount
- Double Helm Chair (Stidd)
- Wet Bar w/Stainless Sink
- Sun Deck
- Storage Locker
- Port & Stbd. L-Seats w/Tables
- AM/FM/CD Player
- 2 Furuno Navnet V GPS/Plotter/Radar
- Furuno Navpilot
- Furuno RD 30
- Raymarine 215 VHF
- Cat Didital Engine Display
- Electronic Controls
- Bow Thruster Controls
- Wesmar Stabilizer Controls

Salon

- Large C-Shaped Leather Settee

- Hi/Low Table w/Leaf
- 2 leather Chairs w/Ottomans (New)
- Small Refrigerator (Stbd.)
- Wine Cooler (Port)
- 42" Flat Screen TV
- 20" Flat Screen TV
- Entertainment Center w/ Bose Surround Sound
- Galley/Dinette
- Subzero Refrigerator w/Freezer
- 2 Burner Electric Cook Top
- GE Microwave/Convection Oven
- Black Granite Countertops
- 20" Flat Screen TV
- Both Style Dinette w/Leather Seating

Pilothouse

- Garmin 3010C GPS/Plotter
- Furuno NavNet GPS/Plotter/Radar
- Furuno NavPilot
- Furuno RD-30
- Raymarine 215 VHF
- Cat Digital Displays
- Electronic Controls
- Ritchie Compass
- Bow Thruster
- Wesmar Stabilizer
- Trim Tabs
- Pedestal Helm Seat
- HeadhunterTank Monitoring System

Guest Stateroom

- Pullman Style Bunk
- Bottom Bunk Single/Double
- Hanging Locker
- Cedar Locker
- Flat Screen TV
- Access Door To Guest/Day Head

Guest/Day Head

- Mirrored Ceiling
- Royal Flush Head
- Marble Countertop

- Marble Sole
- Walk-in Stall Showe

VIP Stateroom/VIP Stateroom Head

- Queen Berth
- Cedar Hanging Locker
- 20" Sony TV
- Sony DVD/CD Player
- Royal Flush Head
- Walk-In Stall Shower
- Marble Countertops
- Marble Sole
- Master Stateroom
- Queen Berth
- Drawers Under Berth
- Cedar Walk-In Closet
- Closet w/Engine Room Access
- 20' Sony TV
- Sony DVD/CD Player

Master Stateroom Head

- Marble Countertops
- Marble Sole
- Royal Flush Head
- Full size Shower w/Tub
- Double Sink Vanity
- Mirrored Ceiling
- Pocket Doors

Engine/Mechanical

- 800hp Caterpillar 3406E
- Electronic Engine Controls W/Synchronizer (3 Stations)
- ZF IRM 350A Marine Gear
- Trolling Valves
- 5 Bladed Nibral Props
- Wesmar Bow Thruster
- Wesmar Stabilizers
- Electrical
- 12V Battery Charger
- 24V Battery Charger (New 2014)
- 3000 Watt DC/AC Inverter
- 10 - 8D Gel Batteries (New 2014)

- 50 Amp Shore Power w/Cords

Tender

- 2005 Novurana MX 400DL
- 50hp Yamaha 4-Stroke
- Standard VHF Radio
- Raymarine ST40 Bi-Data
- Yamaha Tach
- Yamaha Speed
- Battery Switch
- Bow & Stern Light

Additional

- CruiseAir AC/Heat
- Offshore Marine Water Maker (Reconditioned 2013)
- Central Vac
- 2 Piece Washer Dryer
- Freezer (Lazarette)
- Glendenning Cablemaster
- Underwater Lights
- Headhunter Monitoring System

Outside Equipment/Extras

- Electric windlass

Exclusions

Owner's personal belongings.

Disclaimer

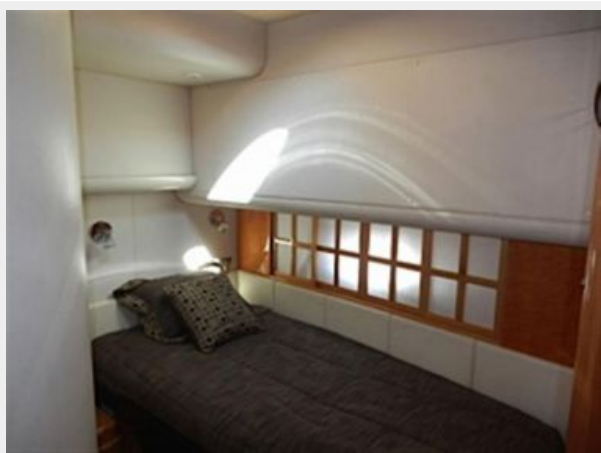
The Company offers the details of this vessel or yacht in good faith but cannot guarantee or warrant the accuracy of this information nor warrant the condition of the vessel. A buyer should instruct his representatives, agents, or his surveyors, to investigate such details as the buyer desires validated. This vessel or yacht is offered subject to prior sale, price change, or withdrawal without notice.

PHOTOS











CONTACTS

Andrey Shestakov, leading yacht broker of the sales department of Shestakov Yacht Sales Inc. Shestakov Yacht Sales Inc., the official representative of the Miami/Fort Lauderdale FL headquarters.

Contact details

Email: andrey@shestakovyachtsales.com

Web: shestakovyachtsales.com/en/

Telephones

USA: +1(954)274-4435

Office hours

Monday – Saturday: **9:00 - 21:00** EDT

Sunday: **closed**

Address



Harbour Towne Marina, 850 NE 3rd St,
STE 213, Dania, FL 33004