

HAPPY HOUR — AZIMUT



Builder: AZIMUT

Year Built: 2004

Model: Mega Yacht

Price: PRICE ON APPLICATION

Location: United States

LOA: 116' 0" (35.36m)

Beam: 24' 4" (7.42m)

Max Draft: 7' 5" (2.26m)

Cruise Speed: 18 Kts. (21 MPH)

Max Speed: 23 Kts. (26 MPH)

Our experienced yacht broker, Andrey Shestakov, will help you choose and buy a yacht that best suits your needs **Happy Hour — AZIMUT** from our catalogue. Presently, at Shestakov Yacht Sales Inc., we have a wide variety of yachts available on our sale's list. We also work in close contact with all the big yacht manufacturers from all over the world.

If you would like to buy a yacht **Happy Hour — AZIMUT** or would like help answering any questions concerning purchasing, selling or chartering a yacht, please call **+1(954)274-4435**

TABLE OF CONTENTS

TABLE OF CONTENTS	2
SPECIFICATIONS	3
Overview	3
Basic Information	3
Dimensions	3
Speed, Capacities and Weight	3
Accommodations	3
Hull and Deck Information	3
Engine Information	4
DETAILED INFORMATION	5
M/Y Happy Hour	5
Exclusions	9
Disclaimer	9
PHOTOS	10
CONTACTS	17
Contact details	17
Telephones	17
Office hours	17
Address	17

SPECIFICATIONS

Overview

Basic Information

Category: Mega Yacht	Model Year: 2004
Year Built: 2004	Refit Year: 2014
Country: United States	

Dimensions

LOA: 116' 0" (35.36m)	Beam: 24' 4" (7.42m)
Max Draft: 7' 5" (2.26m)	

Speed, Capacities and Weight

Cruise Speed: 18 Kts. (21 MPH)	Max Speed: 23 Kts. (26 MPH)
Gross Tonnage: 231 Pounds	

Accommodations

Total Cabins: 5	Sleeps: 10
Crew Sleeps: 7	

Hull and Deck Information

Hull Material: GRP

Engine Information

Engines: 2

Manufacturer: MTU

Model: 16V2000 M91 2400hp

Engine Type: Inboard

Fuel Type: Diesel

DETAILED INFORMATION

M/Y Happy Hour

BRIEF DESCRIPTION

Built in GRP by Italian yard Azimut *Happy Hour* was delivered in 2004 as an Azimut Grande model and has been continually updated including a refit in 2014. Her generous main saloon has a bar to port with three bar stools, a fridge and ice maker, and there is comfortable seating around two coffee tables. Forward is a formal dining area with seating for up to 12 guests.

Accommodation on *Happy Hour* is for 10 guests in five cabins. The VIP suite is on the main deck and has a king sized bed and a 42 inch LCD television. The master suite is located below deck and comes with a king sized bed and 32 inch LCD television while there are also two double cabins with queen sized beds and 13 inch LCD televisions. The accommodation layout is completed by a twin cabin with a Pullman berth and a 13 inch LCD television. All cabins have full en suite facilities.

Lovers of the outdoors will enjoy the vast aft deck with a custom teak table, seating for 12, a wet bar, fridge and a 19 inch flat screen television. More al fresco entertainment is available on the flybridge which has a new Jacuzzi tub, wet bar, fridge, ice maker and teak lounge chairs. Twin 2,400hp MTU engines give her a cruising speed of 18 knots.

Accommodations

Main Deck Salon: Bar to port with 3 stools, fridge and ice maker. Three couches, one chair with ottoman, two coffee tables, new wood flooring and wood blinds.

Dining: Large table with seating for up to 12. Storage port and starboard, new chandelier.

Galley: Miele oven, Miele 5burner stove top, Whirlpool microwave, stainless steel double sink, granite counter tops, wood floors, large windows, LED lighting. **Day Head:** Ondeck, marble counter top, cherry woodwork and shower. **VIP Stateroom:** Ondeck, King bed with storage below, night tables, 42" Sony LCD TV, Onkyo Stereo/CD, B&W speakers

Below Deck Owner's Suite: King bed, night tables, cherry wood throughout, 3 large windows port and starboard, 32" Sony LCD TV, Onkyo Stereo/CD, LED lighting, ensuite head with blue granite counter tops, shower and tub. Master cabin below deck midship with separate access, walkin wardrobe.

Guest Staterooms: 2 x Queen cabins below deck port & starboard. 2 Large port holes, 13" LG LCD TV, Sony Stereo, ensuite head with shower,

1 x Twin cabin below deck with ensuite shower and Pullman berth. 13" LG LCD TV. Storage under beds.

Aft Deck: Custom teak table with seating for 12. Teak decking. 19" LCD TV, wet bar, with refrigerator and bottle storage below.

Fly Bridge: New Jacuzzi, Wet Bar with refrigerator and ice maker, All teak decks, Teak lounge chairs. **Crew:** Total 7 crew

Captain's cabin (2 crew) 2 x crew cabins (4 crew) 1 x crew Pullman in laundry (1 crew)

Audio & Visual Equipment Televisions: TV/DVD/Sat throughout the yacht and in all cabins 42" Plasma Sony television in salon & master cabin 33" Flat screen television in VIP cabin 20" Flat screen televisions in guest cabin 15" Panasonic television in captain's cabin

Stereo Music System: B&W Surround Sound Speaker System, Onkyo DVD/Receiver and Philips Pronto in Saloon, Master and VIP Sony Hi Fi Component System in Guest Cabins Satellite Television: Dolby Digital Sky Receiver in all cabins Video Recorders/Players: Multi-region DVD in all cabins

Deck Equipment Anchor Windlass: Maxwell 6000 Boat Crane & Davits: 4 retractable cleats Aft Warping Capstans: Maxwell 3000 Passerelle & Side Ladders: Marquipt ladder/Side boarding gates/Bessenzoni Passarelle Ground Tackle: Anchors 2 x 180 Kgs

Other Equipment

Jacuzzi Dip Pool: Jacuzzi for 6 persons on sundeck w/separate shower (Replaced 2014) Deck Furniture: Teak bench (forward) Sunbathing mattresses (bow area) Barbeque: Portable BBQ can be set up on swimming platform

Communications and Navigation

Communications: Sat com: Fleet 77 Telephone Exchange: Panasonic VHF Radiotelephones: Raymarine VHF Intercom System: Panasonic KX I7531 UHF Radiotelephones: ICOM IC M67 (x8)

Navigations: Magnetic Compass: White Star GPS: Raymarine E120 Gyro Compass: Raymarine Flux Gate Radar: Raymarine E120 Automatic Pilot: Raymarine ST290 Chart Plotter: Raymarine E120 Log: Raymarine Navtex: NX300 Echo Sounder: Raymarine Wind Instruments: Raymarine Sonar: Raymarine

Engine / Mechanical Equipment

2 x 65kW Kohler Generators Shore Power: Cantalupi Electrical System Engine Hours: Port: 4590 October 2014 Starboard: 4486 October 2014

Generator Hours: Port: 12424 approx. October 2014 Starboard: 13716 approx. October 2014

Converter: Cantalupi Electrical System Electricity: A/C electrical 110/220 V D/C electrical 12/24 V

Air Conditioning: Two brand new air conditioning compressors May 2013 Replaced all 24 air handlers Sept 2014

Batteries: Battery charger ZIVAN Batteries (service) VARTA Batteries (engines) FAAM

Laundry Room

2 x Miele Professional WS 5425 Washing Machines 2 x Miele Professional T5206 Dryers

Refrigeration: Frigomar Bars: 2 x Frigomar Ice makers

Office Equipment

Computers: Dell 0630 Wireless Internet Connection Photocopier/Printer/Fax: HP Office Jet Pro L7680

Ship Safes:

1 x Master 1 x Captain's Cabin

Upgrades and Major Improvements

2007 KVH M90 satellite and Fleet 77 installed New audio systems fitted main salon, master cabin, vip cabin, top and aft decks, New novurania tender Dismantled upper deck shower and bbq (not practical) Replaced with fitted large lounge and fitted gaming table which retracts to make large sunbed, Made a hard cover for the jacuzzi so when not in use also can be used as a sun bed area Purchased 2 teak sun beds and tables for the aft fly sun bathing area.

2008 Raymarine E120 integrated Navigation and radar system fitted in place of old Raymarine Restored all bridge leather

2009 Complete prime and paint of the superstructure using AWL Grip New outdoor protection covers Re-corked the entire teak deck New Miele hot plate installed to increase capacity Re-pitched props and enlarged trim tabs for better fuel efficiency

2010 New headliners and fixing system installed for the entire interior New outdoor cushion covers Upper, Aft and Fore decks New soft furnishings throughout the interior (curtains, blinds, fabric wall coverings) New 3g and wifi system fitted throughout the yacht with boosters for better reception offshore New TV's for owner and guest cabins Both generator motors completely rebuilt, Port side genset electrical side re wound and overhauled Starboard side genset electrical side replaced with new genset (please note that though the generators have a lot of

hours with the works done it should be considered a lot less), 2 MTU turbos replaced new, W5 service on MTU main engines (this is a major 3000hr service replacing all the injectors and removing the heads for inspection), Aircondition complete overhaul Black and grey pumps replaced New black, grey and water pipes and tanks professionally cleaned Fuel tanks and lines professionally cleaned New digital radar fitted New carpets fitted All hydraulic motors, pumps and lines overhauled and replaced as necessary Alfa laval fuel cleaning system installed Shafts pulled and cutlass bearings replaced All electrical systems checked and overhauled where needed Installed new bauer dive compressor Jet ski overhauled and re-painted

2011

Electrical sun awnings replaced for new, Mechanical and fabric overhauled tender and jet ski carriages Replaced volvo penta engine in tender for new VP 160 All valves dismantled serviced or replaced as necessary Bilge pumps overhauled Stripped cap rail back to bare teak and re varnished using the awl brite system Replaced for new Miele oven, steam oven, dishwasher, crew fridge, (2) ice makers, New TV for main salon

2011/2012 Re-paint non skid on coach house roof Re-paint aft transom door Re-varnish main deck interior floors French polish minor interior scratches and main salon dining table replace old corking on all bulwarks and exterior windows New teak on transom Steps stripped and re veneer aft deck and fly deck tables new non skid fitted to lazaretto floor New cushions and paint for tender New control system for all audio video Complete hull polish and protective coating

2014 Paint Hull Bottom Paint Stabilizers, new seals, rebuild Trim Tabs rebuild rams Removed and balanced shafts Propellers Repaired all leaks and fixed all problems on main engines Removed and repair Hydraulic garage door new seals rebuilt gears. New underwater lights X3 New spotlights New Jacuzzi Varnished Cap rails Varnished all out door tables Revarnished the salon floor, (sanded down and revarnished) New Headliners (whole boat including crew) New panels Polished the whole boat New Carpet Replaced all the air handlers Replaced most of the lights in the yacht to LED Replaced all out door lights New chandelier and sconces New spotlights 3G WiFi on board the yacht New custom mattresses, 11 in total New linen Soft goods New Crockery and Cutlery

Safety & Fire Protection Smoke detector and extractor (garage) Alarms: General, cumulative, fire Security: Colour Video camera (aft deck & engine room), pivoting/zoom, monitor in wheelhouse and connected to televisions throughout MCA Medical Kit B Defibrillator Oxygen Personal fire fighting equipment

Ancillary Equipment

Steering System: Piangiani Oil/Water Separator: Racor 500 MA Rudder Angle Indicator: Raymarine Fire/Bilge Pump: Gianneschi and Ramacciotti Bow Thruster: American 50hp Bow

Thruster Sewage Treatment System: Jets 15 MDD Stabilizers: TRAC Air Conditioning: CruisAir 250,000 BTU air conditioning Fuel Separator & Filters: Racor 1000MA

Tender and Water Toys

5m Novorania tender with 160hp inboard engine (new 2007) Diving Equipment: Snorkeling equipment Jet Skis: Yamaha 250HPWaver runner 2 x Sea kayaks 2 x Doughnuts Wake board Water skis

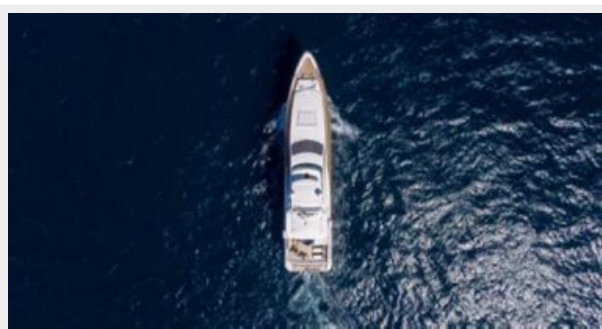
Exclusions

Owner's personal belongings.

Disclaimer

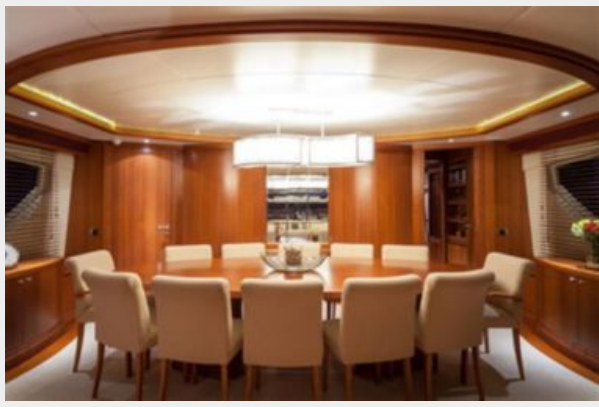
The Company offers the details of this vessel or yacht in good faith but cannot guarantee or warrant the accuracy of this information nor warrant the condition of the vessel. A buyer should instruct his representatives, agents, or his surveyors, to investigate such details as the buyer desires validated. This vessel or yacht is offered subject to prior sale, price change, or withdrawal without notice.

PHOTOS

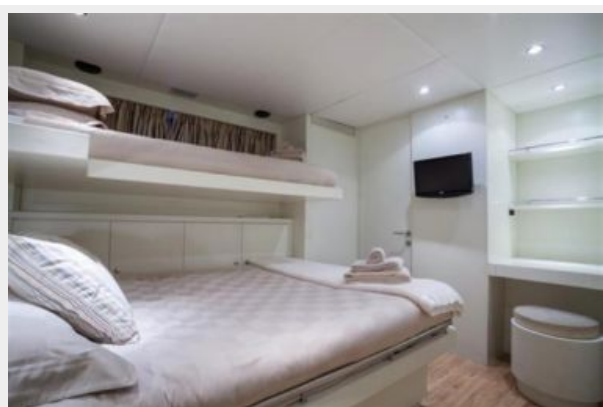














CONTACTS

Andrey Shestakov, leading yacht broker of the sales department of Shestakov Yacht Sales Inc. Shestakov Yacht Sales Inc., the official representative of the Miami/Fort Lauderdale FL headquarters.

Contact details

Email: **andrey@shestakovyachtsales.com**

Web: shestakovyachtsales.com/en/

Telephones

USA: **+1(954)274-4435**

Office hours

Monday – Saturday: **9:00 - 21:00 EDT**

Sunday: **closed**

Address



Harbour Towne Marina, 850 NE 3rd St,
STE 213, Dania, FL 33004