

58FT 2005 SEA RAY 580 SEDAN BRIDGE — SEA RAY



Builder: [SEA RAY](#)

Year Built: 2005

Model: Cruiser

Price: PRICE ON APPLICATION

Location: United States

LOA: 58' 0" (17.68m)

Beam: 16' 0" (4.88m)

Max Draft: 4' 3" (1.30m)

Our experienced yacht broker, Andrey Shestakov, will help you choose and buy a yacht that best suits your needs 58ft 2005 Sea Ray 580 Sedan Bridge — SEA RAY from our catalogue. Presently, at Shestakov Yacht Sales Inc., we have a wide variety of yachts available on our sale's list. We also work in close contact with all the big yacht manufacturers from all over the world.

If you would like to buy a yacht 58ft 2005 Sea Ray 580 Sedan Bridge — SEA RAY or would like help answering any questions concerning purchasing, selling or chartering a yacht, please call **+1(954)274-4435**

TABLE OF CONTENTS

TABLE OF CONTENTS	2
SPECIFICATIONS	4
Basic Information	4
Dimensions	4
Speed, Capacities and Weight	4
Accommodations	4
Hull and Deck Information	4
Engine Information	4
DETAILED INFORMATION	5
Hull & Deck Features	5
Cockpit	5
FLYBRIDGE	6
Cabin Features	6
Salon	7
Galley & Dinette	7
Master Stateroom	8
Guest Stateroom	8
Electronics	9
Forward VIP Stateroom	9
Manufacturer Description	9
Exclusions	10
Disclaimer	10
PHOTOS	11
CONTACTS	20
Contact details	20
Telephones	20
Office hours	20
Address	20

SPECIFICATIONS

Basic Information

Category: Cruiser

Sub Category: Express

Model Year: 2005

Year Built: 2005

Country: United States

Dimensions

LOA: 58' 0" (17.68m)

Beam: 16' 0" (4.88m)

Max Draft: 4' 3" (1.30m)

MFG Length: 58' 7" (17.86m)

Speed, Capacities and Weight

Displacement: 51500 Pounds

Water Capacity: 150 Gallons

Holding Tank: 68 Gallons

Fuel Capacity: 700 Gallons

Accommodations

Total Cabins: 3

Total Heads: 2

Hull and Deck Information

Hull Material: Fiberglass

Engine Information

Engines: 2

Manufacturer: MAN

Model: 900 Common Rail

Fuel Type: Diesel

DETAILED INFORMATION

Hull & Deck Features

The hull on this 58' Sedan Bridge shines and her decks are in great shape as well. Making your way forward and aft is easy and safe thanks to her wide side decks and high hand rails.

- Bow Rail, 316 Stainless Steel w/Welded Stanchions, Intermediate Rails & Life Lines
- Cleats, Custom Sea Ray® Thru-Bolted - Stainless Steel (8)
- Deck Fill Plates, Stainless Steel
- Deck Rails, 316 Stainless Steel
- Gel Coat, Arctic White
- Graphics, Striping
- Handrails, 316 Stainless Steel
- Hatch, Deck Vent - Translucent w/Locks & Sky Screen Cover (20x20)
- Lights, Navigation
- Portlights, Stainless Steel (6 Fixed, 2 Opening)
- Resin, High-Performance Vinylester
- Rub Rail, PVC w/Stainless Steel Insert
- Storage, Transom Wall - (For Fenders & Gear)
- Swim Platform, Extended w/Concealed Stainless Steel Ladder & Grab Handle
- Vent System, Engine Room - Integral
- Windows, Deck
- Windshield, Tempered/Tinted Glass - Bonded-In
- Windlass System: Anchor, Galvanized Anchor Chain Storage w/Hatch Anchor Chute, Stainless Steel Anchor Washdown Spigot w/Hose Windlass, Chain w/Foot Switches

Cockpit

Stepping onto the back of the boat, you'll notice she has a large swim platform that makes it easy to get in and out of the water. On the starboard side is the entrance to your cockpit. It is very spacious and offers plenty of storage.

- Carpet Liner, Snap-In
- Door, Cabin Entry (Sliding & Lockable) w/Screen - Stainless Steel
- Door, Transom
- Floor Liner, Fiberglass - Self-Bailing
- Handrails, 316 Stainless Steel
- Hatch, Engine Compartment
- Lighting, Indirect
- Outlet, 120V GFI Protected
- Seating, Aft Bench w/Fiberglass Storage Base (Removable)
- Steps, Molded Deck Access

- Storage, Aft Coaming w/Fiberglass Bins
- Storage, Side Panels

FLYBRIDGE

Making your way up the molded staircase from the cockpit, you'll enter the flybridge. You have your designated helm station with updated Raymarine Electronics. Forward of the helm is a comfortable seating area. On the starboard side across from that seating, you have plenty of storage, prep space, and a refrigerator.

- Beverage Holders, Stainless Steel
- Carpet Liner, Snap-In
- Handrails, 316 Stainless Steel
- Hardtop, Fiberglass w/Overhead Storage, (20x20) Hatch w/Stainless Steel Grab Rails, Overhead Lighting w/Electronic Dimmer & Red Night Lighting
- Icemaker, 120V
- Lighting, Indirect
- Outlet, 12V Accessory
- Outlet, 120V GFI Protected
- Outlet, Cable TV
- Refrigerator, 120V
- Seating, Aft Bench
- Seating, Helm (2) - Custom Euro-Style w/Flip-Up ThighRise Bolsters, Armrests & Heavy-Duty Pedestals w/Slides, Swivels & Pneumatic Vertical Adjustments
- Seating, U-Shaped w/Storage Below - Forward
- Ship's Bell
- Steering Wheel, Wood-Accent
- Steps, Molded Bridge Access w/Storage Below
- Bose Stereo, 12V AM/FM Single CD, Satellite-Ready w/6- Disc CD Changer, Amplifier, Subwoofer, Speakers (4 - Bridge, 2 - Cockpit) & Digital Bridge Remote Control
- Storage, Drawer - Helm
- Storage, Forward Bridge Access
- Storage, Helm Access Door - Starboard
- Table, Bridge - Fiberglass
- Wet Bar w/Sink, Removable Trash Receptacle & Storage - Forward

Cabin Features

- Blinds, Wood
- Carbon Monoxide Monitors
- New Carpet, Deep-Pile Stain-Resistant w/Padding
- Carpet Runner, Interior (Sunbrella)

- Curtains, Custom - Throughout
- Handrails, Elliptical Stainless Steel
- Lighting, 120V
- Lighting, 120V Halogen
- Lighting, 120V Indirect
- Lighting, 24V Halogen
- Outlet, 12V Accessory
- Outlets, 120V GFI Protected
- Outlets, Phone Outlets & Switch Plates - Satin Nickel Finish
- Pillows, Accent
- Shades, Fabric Day/Night w/Drape Trim
- Vacuum System, Central - Single Inlet (Beam)
- Wood Interior Package, Veneer Gloss Finish - Cherry

Salon

As you step inside through the large stainless sliding door, you find the salon. The first thing you'll notice is the brand new carpeting that feels very soft to the touch and still smells new! On the starboard side is a new flatscreen TV that is connected to the KVH Satellite. Plenty of comfortable seating greets you making it perfect for entertaining the family and friends.

- End Table
- Entertainment Center - Stereo, Bose Lifestyle 48 Surround Sound System w/DVD Player, Acoustimass Speakers & Subwoofer - Storage, Cabinet - CD - New TV, Flatscreen LCD (120V) w/DVD/CD, Remote, Coax Outlet & Gain Control Panel
- Seating, Sofa (Ultraleather HP™)
- Seating, Sofa w/Storage Below (Ultraleather HP)

Galley & Dinette

Moving forward from the salon, you'll find the galley on the starboard side. You'll see it is open and inviting. It features Sub-Zero fridge and freezers and offers plenty of counter space for preparing meals. On the port side is a generous dinette that flaunts the optional ostrich leather seating.

Coffeemaker, 120V (Krupps)

Countertop, Solid Surface w/Cutting Board & Sink w/Single-Lever Grohe Faucet

Flooring, Wood

Freezer w/Icemaker, 120V Under-Counter (Sub Zero)

Microwave/Convection Oven, 120V - Stainless Steel Face

Outlet, 12V Accessory

Power Vent, 12V

Refrigerator, 120V Under-Counter (Sub Zero)

Storage, Cabinets - Lower

Storage, Glass & Dish w/Wine Rack

Stove, 240V Recessed Two-Burner w/Solid Surface Cover (Kenyon)

Trash Receptacle - Slide-Out

Wine Rack w/Custom Bottle Storage

Dinette: Optional Ostrich Leather Seating, Wrap Around w/Storage Below Table, Dinette w/Wood Surface & Storage Below

Master Stateroom

As we head down below, the new carpeting flows throughout. Moving aft is your full beam master stateroom. It's very private and features lovely cherry woodwork. You can lay down and watch your favorite movie on the flatscreen TV or freshen up after a long day at sea in the ensuite head and full shower.

- Bed, Queen-Size w/Innerspring Mattress, Pillows, Sheets, Coordinated Spread & Carpeted Storage Below w/Gas-Assisted Hatch
- Countertop, Solid Surface
- Door, Privacy w/Full-Length Beveled Mirror
- Hanging Locker, Maple-Lined w/Light
- Stereo, Acoustimass w/Jewel Cube® Speakers
- Storage, Dresser w/Drawers & Lift Top Vanity
- Storage, Locker - Maple-Lined w/Adjustable Shelves
- New TV, Flatscreen LCD (120V) w/DVD/CD/VCR w/Remote, Coax Outlet & Gain Control Pane
- Full Head & Shower

Guest Stateroom

Moving forward from the master stateroom, you'll find the guest stateroom on the port side. A comfortable berth with flatscreen TV will be perfect for the kids or grandkids.

- Hanging Locker, Maple-Lined w/Light
- Storage, Shelf

- TV/DVD Combo, 13" - 120V w/Remote & Coax Outlet

Electronics

- Electronics Circuit, 50 Amp/12V
- Raymarine VHF Radio 230 w/Remote Speaker & 8' Fiberglass Antenna
- Raymarine Autopilot -
- Raypilot ST-8001+
- Raymarine C120 GPS/Chartplotter/Radar w/Integrated 4kW Open Array (12.1" Color LCD)
- Sea Ray Navigator™ II, GPS/Chartplotter - 12.1" PC w/Sunlight-Viewable Touch-Screen LCD, Water Temp & Depth
- Electrical Systems: Batteries, 8-D w/Boxes (4) & Group 27 For Genset (1) Battery Charger/Converter, 120V/10 Amp/12V Battery Charger/Converter, 240V/50 Amp/24V Battery Charger Overcurrent Protection Battery Equalizer, 60 Amp (2) Battery Solenoid Switches, 12V (2), 24V (2) Inlet, Cable Television w/Cords Panel, Circuit Breaker - Remote Panel, DC Main Breaker Panel, Main Distribution - AC Housed in Aluminum Enclosure Panel, Main Distribution - DC Housed in Aluminum Enclosure Shore Power, Cablemaster (Glendinning) 50 Amp/240V/60 Cycle w/50' Cord & Wireless Remote Transformer, Shore Power Isolation - 50 Amp/240V/60 Cycle Wiring, Color-Coded & Labeled w/Chafe Protection

Forward VIP Stateroom

Moving all the way forward, you'll come to the VIP stateroom. You are greeted by a centerline island queen berth with steps on both sides that provides easy access on and off. You have another flatscreen TV so your guests can catch up on the news or watch their favorite movie, and you also have access to the day head and full standup shower.

- Bed, Queen-Size w/Innerspring Mattress, Pillows, Sheets, Coordinated Spread, Drawers & Carpeted Storage Below w/Gas-Assisted Hatch
- Hanging Locker, Maple-Lined w/Light
- Mirrored Rope Locker Bulkhead
- Storage, Cabinet w/Drawers - Port
- TV/DVD Combo, 13" - 120V w/Remote & Coax Outlet
- Access to the Day Head on the Port Side
- Full Stand Up Shower to Starboard

Manufacturer Description

More powerful and adventurous than any other yacht in its class, the newly designed 550 Sedan Bridge is ready to take command of the water. Its bold, dynamic styling includes a fiberglass hardtop as well as the very latest in marine electronics. Driven by powerful twin MAN V8 diesel

inboards, this Sedan Bridge has a higher fuel capacity than most yachts in its category, plus all the strength and durability you'll need for exploring rougher waters.

Exclusions

Owner's personal belongings.

Disclaimer

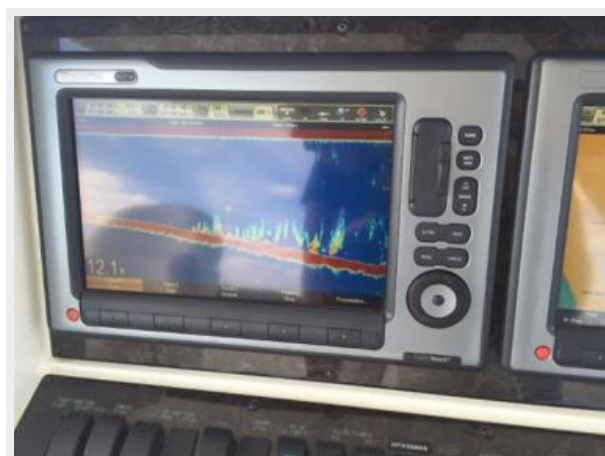
The Company offers the details of this vessel or yacht in good faith but cannot guarantee or warrant the accuracy of this information nor warrant the condition of the vessel. A buyer should instruct his representatives, agents, or his surveyors, to investigate such details as the buyer desires validated. This vessel or yacht is offered subject to prior sale, price change, or withdrawal without notice.

PHOTOS

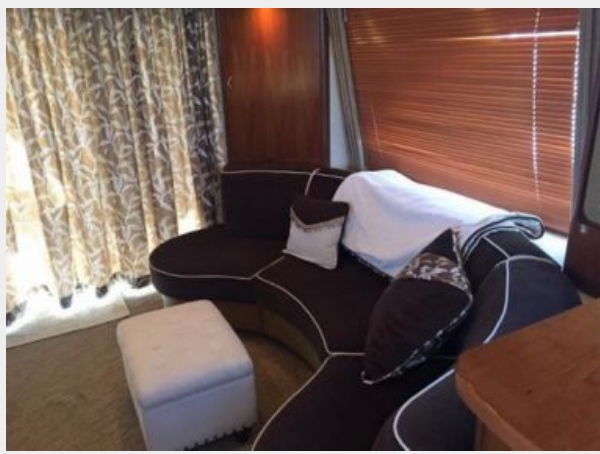




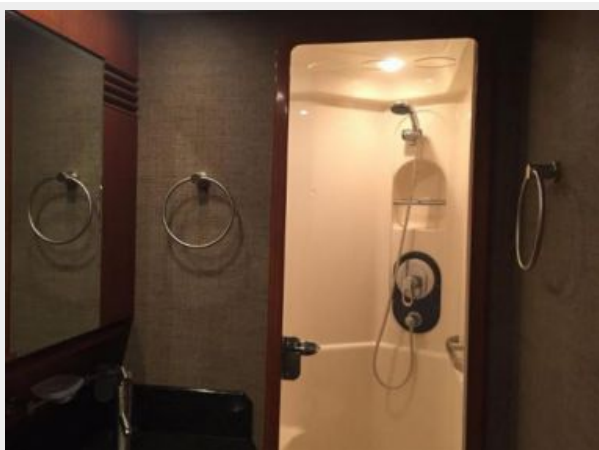


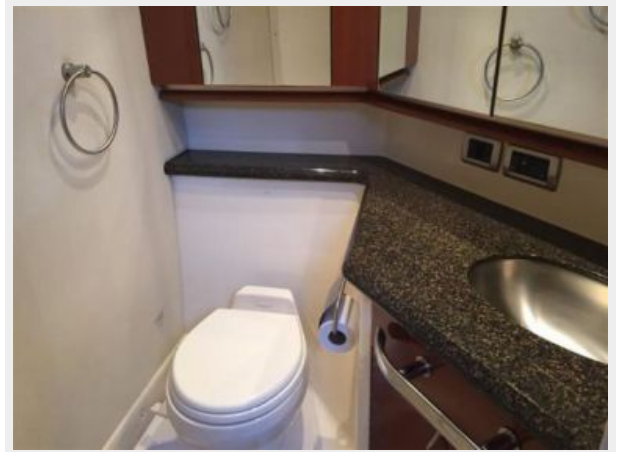












CONTACTS

Andrey Shestakov, leading yacht broker of the sales department of Shestakov Yacht Sales Inc. Shestakov Yacht Sales Inc., the official representative of the Miami/Fort Lauderdale FL headquarters.

Contact details

Email: andrey@shestakovyachtsales.com

Web: shestakovyachtsales.com/en/

Telephones

USA: +1(954)274-4435

Office hours

Monday – Saturday: **9:00 - 21:00** EDT

Sunday: **closed**

Address



Harbour Towne Marina, 850 NE 3rd St,
STE 213, Dania, FL 33004