

## BLACK PEARL — CHAPARRAL



**Builder:** CHAPARRAL

**Year Built:** 2011

**Model:** Cruiser

**Price:** PRICE ON APPLICATION

**Location:** United States

**LOA:** 33' 6" (10.21m)

**Beam:** 10' 6" (3.20m)

**Min Draft:** 2' 2" (0.66m)

**Max Draft:** 3' 5" (1.04m)

Our experienced yacht broker, Andrey Shestakov, will help you choose and buy a yacht that best suits your needs **Black Pearl — CHAPARRAL** from our catalogue. Presently, at Shestakov Yacht Sales Inc., we have a wide variety of yachts available on our sale's list. We also work in close contact with all the big yacht manufacturers from all over the world.

If you would like to buy a yacht **Black Pearl — CHAPARRAL** or would like help answering any questions concerning purchasing, selling or chartering a yacht, please call **+1(954)274-4435**

---

# TABLE OF CONTENTS

---

TABLE OF CONTENTS	2
SPECIFICATIONS	4
Overview	4
Basic Information	4
Dimensions	4
Speed, Capacities and Weight	4
Accommodations	5
Hull and Deck Information	5
Engine Information	5
DETAILED INFORMATION	6
Walkthrough	6
Salon	6
Galley	6
Master Stateroom	6
Master Head	7
Aft Salon	7
Helm	7
Electronics	8
Electrical Equipment	8
Mechanical	8
Engineer Room	9
Cockpit	9
Decks	9
Hull	9
Broker's Remarks	10
Disclaimer	10
Exclusions	10
Disclaimer	10

---

PHOTOS	11
Galley	11
Salon	11
Salon/Cabin	11
Aft Seating	11
Head	12
Helm	12
Distribution Panel	12
Engine Room	12
Generator	13
Cockpit Seating	13
Cockpit	13
Swim Platform Seat	13
Profile	13
Profile	13
Layout	14
CONTACTS	15
Contact details	15
Telephones	15
Office hours	15
Address	15

---

# SPECIFICATIONS

---

## Overview

---

Black Pearl is in as NEW condition as they come. Lift kept on a freshwater lake and behind the owners house. This is the brochure boat and you will not find a nicer 330 Chaparral anywhere. The enclosures are garage kept and in NEW condition. The bow cushion is stored in the garage in plastic wrap. NO bottom paint and a sparkling hull that is well waxed and maintained. Interior looks like it has never been used. If you are looking for as new a vessel as possible, don't miss out on Black Pearl.

## Basic Information

---

**Category:** Cruiser

**Sub Category:** Express

**Model Year:** 2011

**Year Built:** 2011

**Country:** United States

**Vessel Top:** Hardtop

**Cockpit:** Yes

## Dimensions

---

**LOA:** 33' 6" (10.21m)

**Beam:** 10' 6" (3.20m)

**Min Draft:** 2' 2" (0.66m)

**Max Draft:** 3' 5" (1.04m)

**Clearance:** 10' 8" (3.25m)

## Speed, Capacities and Weight

---

**Displacement:** 12900 Pounds

**Water Capacity:** 50 Gallons

**Holding Tank:** 28 Gallons

**Fuel Capacity:** 175 Gallons

---

## Accommodations

---

**Total Cabins:** 1

**Total Berths:** 2

**Sleeps:** 6

**Total Heads:** 1

---

## Hull and Deck Information

---

**Hull Material:** Fiberglass

**Hull Configuration:** Deep Vee

**Hull Color:** Black/White

---

## Engine Information

---

**Engines:** 2

**Manufacturer:** Mercruiser

**Model:** 350 DTS MAG

**Engine Type:** I/O

**Fuel Type:** Gas

---

# DETAILED INFORMATION

---

## Walkthrough

---

Black Pearl is in as NEW Condition as they come. Lift kept on a freshwater lake and behind the owners house. This is the brochure boat and you will not find a nicer 330 Chaparral anywhere. The enclosures are garage kept and in NEW condition. The bow cushion is stored in the garage in plastic wrap. NO bottom paint and a sparkling hull that is well waxed and maintained. Interior looks like it has never been used. If you are looking for as new a vessel as possible, don't miss out on Black Pearl.

## Salon

---

- Sliding Entry Door
- L Shaped Sofa Ultra-leather w/Storage
- Removable Dinette and Removable Base
- HD Flat Screen Salon TV with Electric Base
- Stereo System
- Indirect Lighting
- Teak and Holly Flooring
- Stainless Port Lights
- Air-Conditioning w/Reverse Cycle Heat

## Galley

---

- Solid Surface Counter Tops
- Microwave Oven
- Stainless Sink
- Single Burner Electric Stove
- Refrigerator/Freezer
- Upper and Lower Storage Cabinets
- Storage under Galley Floor
- 110V Outlet
- Utility Drawer Storage
- Exhaust Fan
- Port Light
- Grab Railing
- Storage Shelve

## Master Stateroom

---

- Double Berth Interspring Mattress
- Bed Cover and Pillows Package
- Port and Starboard Lockers
- TV w/DVD Player
- 110V Outlet
- Under Berth Storage
- Hull Side Storage Shelves
- Overhead 12V Lighting
- Privacy Curtain
- Reading Lights
- Overhead Hatch
- Stereo Speakers

---

## Master Head

---

- Vanity w/ Solid Surface Counter Top
- Mirror
- Shower Sump Pump
- Vacflush Head w/Holding Tank
- Port Light
- Indirect Lighting
- Lower Cabinet Storage
- 110V Outlet
- Exhaust Fan
- Privacy Door

---

## Aft Salon

---

- Conversational Area Converts to Double
- TV
- AC Vent
- Table Mount Bracket
- Upper Storage Cabinets
- Overhead Lighting
- Stereo Speakers
- Privacy Curtain

---

## Helm

---

- Tilt Captain's Wheel
- Full Enclosure

- Drink Holders
- Single Lever controls
- Remote Spotlight Control
- Rocker Switch Control Panel
- Double Helm Seat
- Engine Instruments
- Trim Tab Control
- Navigation System
- Safety Cutout Switch
- Key Ignition Switches

---

## Electronics

---

- Garmin 5215 GPS/Plotters
- Depth Sounder
- Wet Compass
- Remote Spotlight
- Clarion Stereo System
- Clock

---

## Electrical Equipment

---

- Custom Electrical Distribution Panel
- Generator 5.0 kw
- 30 Amp Shore Cord
- Cable TV Hook Up
- Battery Charger
- Battery Bank System
- Battery Switches
- Electrical Bonding System
- Hot Water Heater
- Stereo CD Changer

---

## Mechanical

---

- Trim Tab System
- Power Steering System
- Engine Flush Kit
- Fresh Water System
- Pumpout Fitting
- Windlass Anchor System



---

## Engineer Room

---

- Engine Room Lighting
- Engine Room Sound Insulation
- Air-conditioning Strainer
- Engine Room Acoustical Insulation
- 5kw Generator
- Automatic Fire Suppression System
- Engine Room Blowers

---

## Cockpit

---

- Cockpit Seating with Table Mount
- Transom Door
- Full Enclosure
- Mooring Cover
- Swim Platform w/Ladder
- Power Engine Hatch
- Courtesy Lights
- Electric Sun Lounge

---

## Decks

---

- Non Skid Surface
- Stainless Steel Bow railing
- Forward Anchor Storage Locker
- Hatch Cover
- Fresh Water Filler Port
- Pumpout Port
- Hand Rails
- Aft Storage Compartment
- Forward Deck Hatch
- Forward Deck Cushion

---

## Hull

---

- Swim Platform w/ ladder
- Gas Grill w/Removable Stand
- Rub Railing
- Bow Rail
- Bronze Seacocks

- Transom Shower
- Windshield Screens w/Walk-thru
- Hard Top w/ Hatch
- Bow Anchor System
- Bow, Stern and Spring Cleats
- Electric Sun Bed
- Automatic Bilge Pumps

---

## Broker's Remarks

---

This is a very clean and well maintained Vessel. Many options makes this an exceptional value.

---

## Disclaimer

---

The Company offers the details of this vessel in good faith but cannot guarantee or warrant the accuracy of this information nor warrant the condition of the vessel. A buyer should instruct his agents, or his surveyors, to investigate such details as the buyer desires validated. This vessel is offered subject to prior sale, price change, or withdrawal without notice.

---

## Exclusions

---

Owner's personal belongings.

---

## Disclaimer

---

The Company offers the details of this vessel or yacht in good faith but cannot guarantee or warrant the accuracy of this information nor warrant the condition of the vessel. A buyer should instruct his representatives, agents, or his surveyors, to investigate such details as the buyer desires validated. This vessel or yacht is offered subject to prior sale, price change, or withdrawal without notice.

# PHOTOS

Salon



Galley



Salon/Cabin



Aft Seating



**Head**



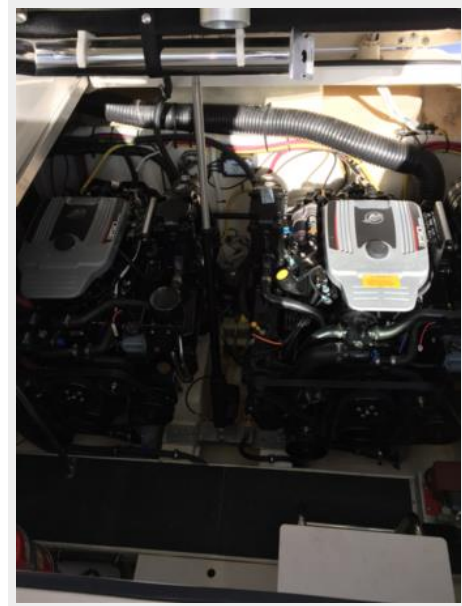
**Helm**



**Distribution Panel**



**Engine Room**



**Generator**



**Cockpit Seating**



**Cockpit**



**Swim Platform Seat**



**Profile**



**Profile**



## Layout





---

# CONTACTS

---

Andrey Shestakov, leading yacht broker of the sales department of Shestakov Yacht Sales Inc. Shestakov Yacht Sales Inc., the official representative of the Miami/Fort Lauderdale FL headquarters.

---

## Contact details

---

Email: [andrey@shestakovyachtsales.com](mailto:andrey@shestakovyachtsales.com)

Web: [shestakovyachtsales.com/en/](http://shestakovyachtsales.com/en/)

---

## Telephones

---

USA: +1(954)274-4435

---

## Office hours

---

Monday – Saturday: **9:00 - 21:00** EDT

Sunday: **closed**

---

## Address

---



Harbour Towne Marina, 850 NE 3rd St,  
STE 213, Dania, FL 33004