

VERSUS — AZIMUT



Builder: AZIMUT

Year Built: 2010

Model: Motor Yacht

Price: PRICE ON APPLICATION

Location: Italy

LOA: 62' 5" (19.02m)

Beam: 16' 1" (4.90m)

Min Draft: 4' 4" (1.30m)

Max Draft: 4' 4" (1.30m)

Our experienced yacht broker, Andrey Shestakov, will help you choose and buy a yacht that best suits your needs **VERSUS — AZIMUT** from our catalogue. Presently, at Shestakov Yacht Sales Inc., we have a wide variety of yachts available on our sale's list. We also work in close contact with all the big yacht manufacturers from all over the world.

If you would like to buy a yacht **VERSUS — AZIMUT** or would like help answering any questions concerning purchasing, selling or chartering a yacht, please call **+1(954)274-4435**

TABLE OF CONTENTS

TABLE OF CONTENTS	2
SPECIFICATIONS	3
Overview	3
Basic Information	5
Dimensions	5
Speed, Capacities and Weight	6
Accommodations	6
Hull and Deck Information	6
Engine Information	6
PHOTOS	7
CONTACTS	24
Contact details	24
Telephones	24
Office hours	24
Address	24

SPECIFICATIONS

Overview

Super equipped Az.62S, 2 cabins 2 heads layout + room at midship (easily convertible into 3RD cabin) and crew cabin.

SPECIFICATION

Length:	19,02 mt
Beam:	4,90 mt
Draft:	1,30 mt
Hull Material:	Fiberglass
Fuel Capacity:	2700 lt
Water Capacity:	960 lt
Flag:	ITALY
Location:	TYRRENIAN SEA
Year:	2010

LAYOUT

Cabins:	2 + 1 CREW
Berth:	4 + 1 CREW
Toilet:	2 + 1 CREW

ENGINE

Brand:	CATERPILLAR
Model:	C18
Power:	2 X 1015 HP
Engine hours:	230
Trasmission:	-
Fuel:	Diesel

ELETTIC

24V -220V - Desalinizzatore HP - Air Conditioning CRUSAIR - Heating system
- Generator 19 Kw Kohler

EQUIPMENT

GPS/Plotter 2 X C120 Raymarine - Autopilot RAYMARINE- Radar
RAYMARINE - VHF RAYMARINE

ACCESSORIES

Bow thruster - Bathing ladder - Galley 4 fire - Fridge - Freezer - Icemaker -
Microwave - Washing machine - Dish washer - DVD - Stereo sound system -
Sat tv system - TV n° 3 - Chain counter - Garage - Stern mooring winch - CD
player - Up/Down platform - Battery charger - Fridge in cockpit - Grill in cockpit -
Searchlight - Water heater - Teak platform - Teak cockpit - Teak sideways -
Salon wood Floor - Up/Down table in salon - Up/Down TV system in salon -
Yacht controller - Bidet - iBoat - Red hull - Electric tent in cockpit.

Basic Information

Category: Motor Yacht

Model Year: 2010

Year Built: 2010

Country: Italy

Dimensions

LOA: 62' 5" (19.02m)

Beam: 16' 1" (4.90m)

Min Draft: 4' 4" (1.30m)

Max Draft: 4' 4" (1.30m)

Speed, Capacities and Weight

Displacement: 77161.7917 Pounds

Water Capacity: 253.60516992 Gallons

Fuel Capacity: 713.2645404 Gallons

Accommodations

Total Cabins: 2

Total Berths: 4

Total Heads: 2

Crew Cabin: 1

Crew Berths: 1

Crew Heads: 1

Hull and Deck Information

Hull Material: Fiberglass

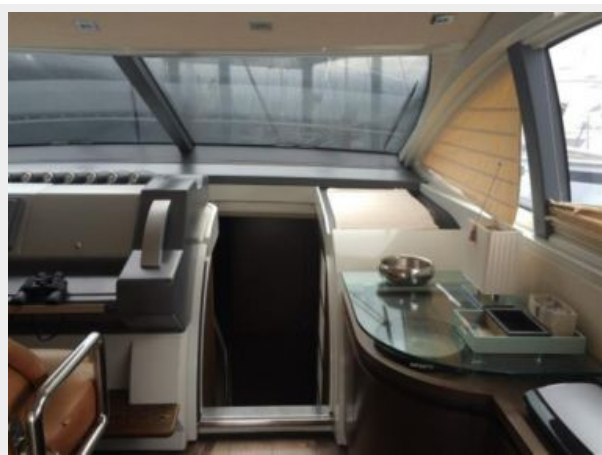
Engine Information

Manufacturer: Caterpillar

Model: C18

PHOTOS

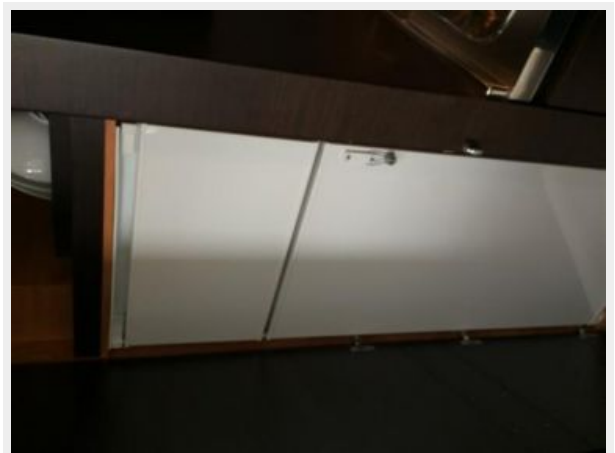
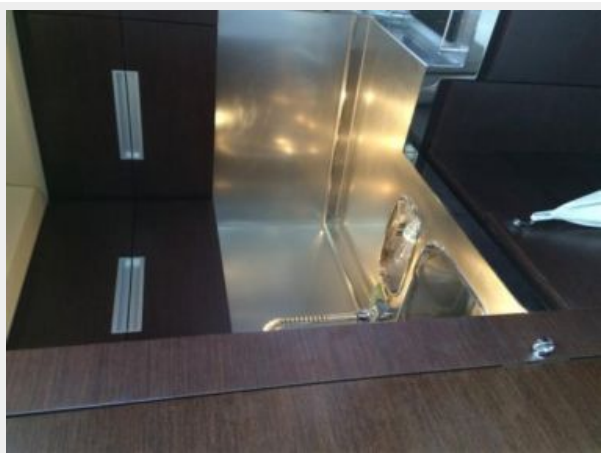


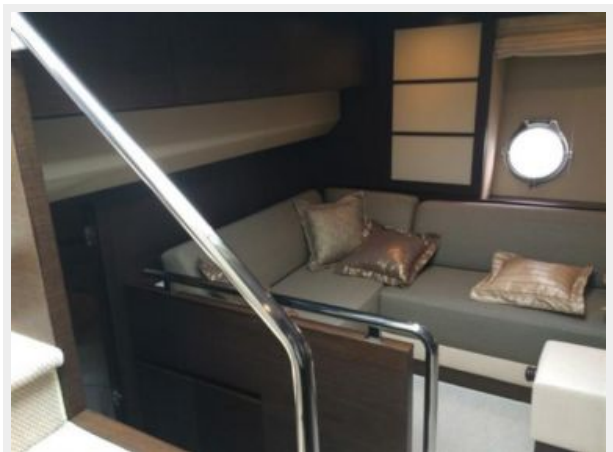
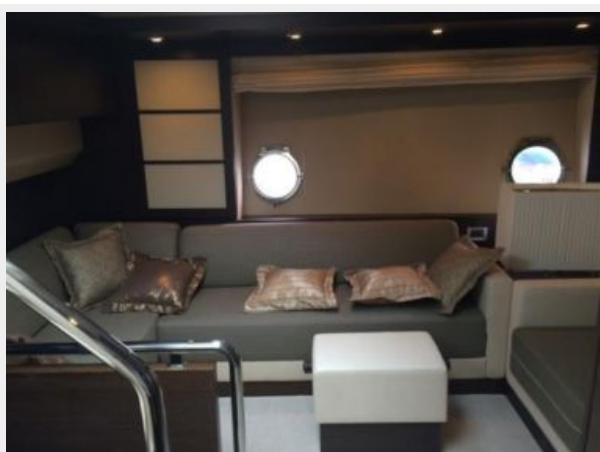




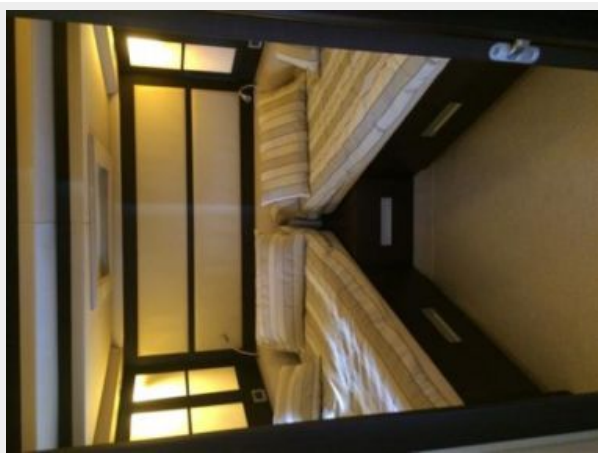


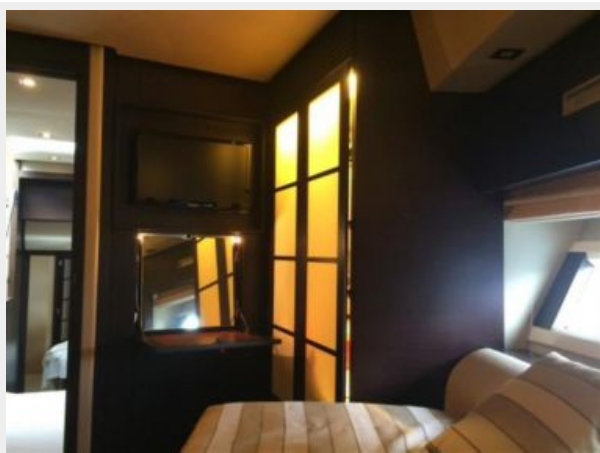
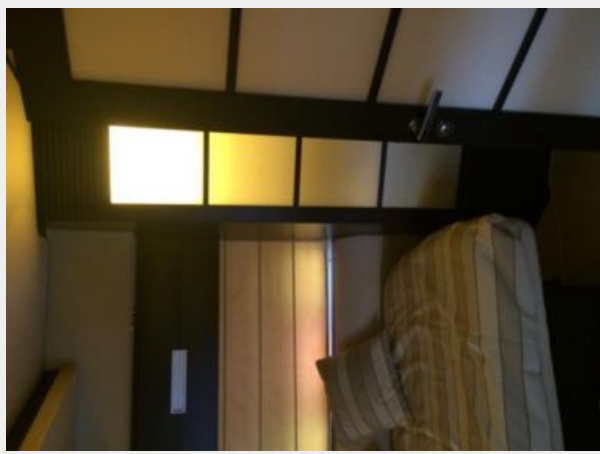


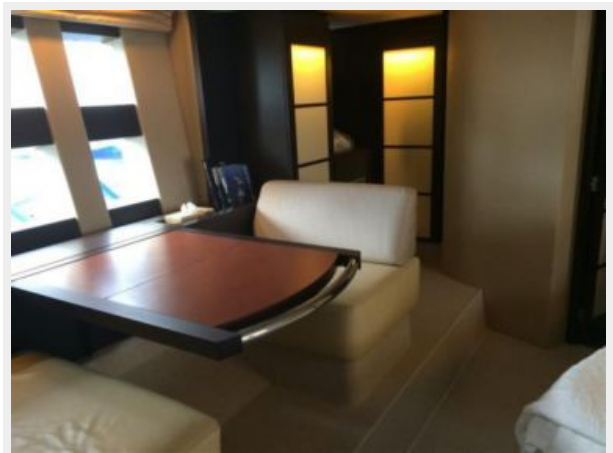
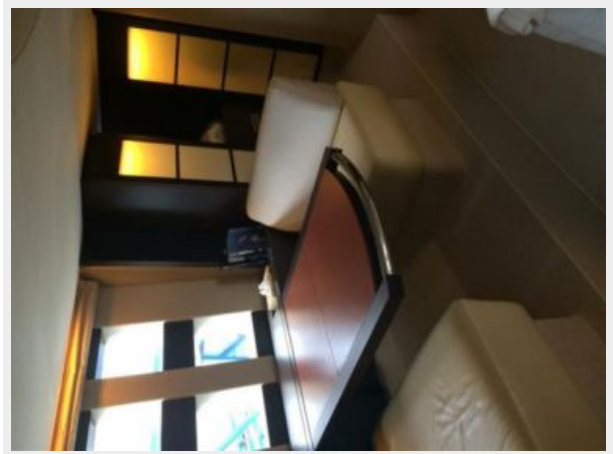


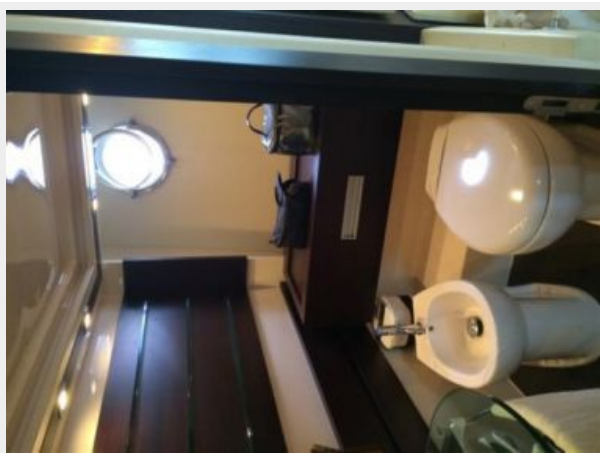
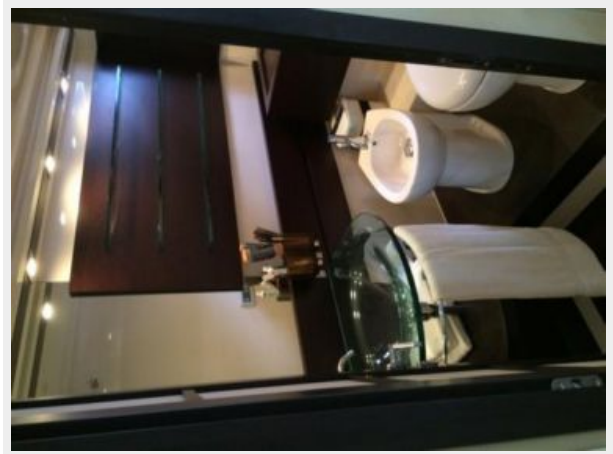
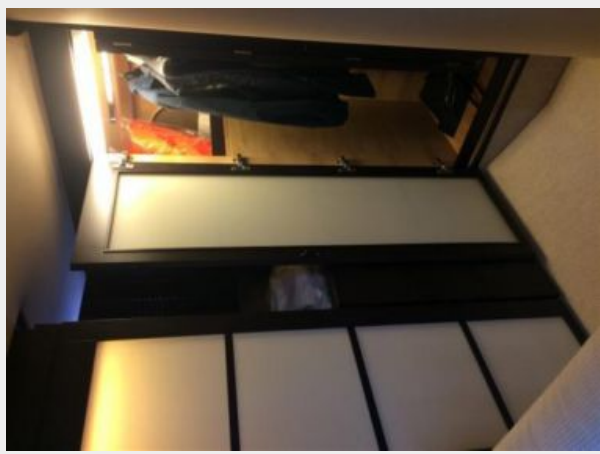
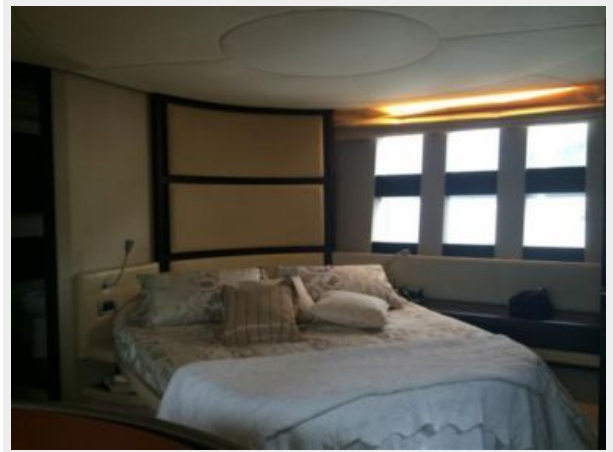


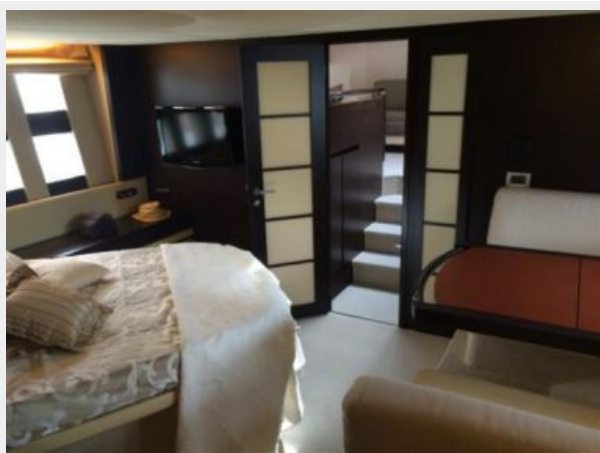
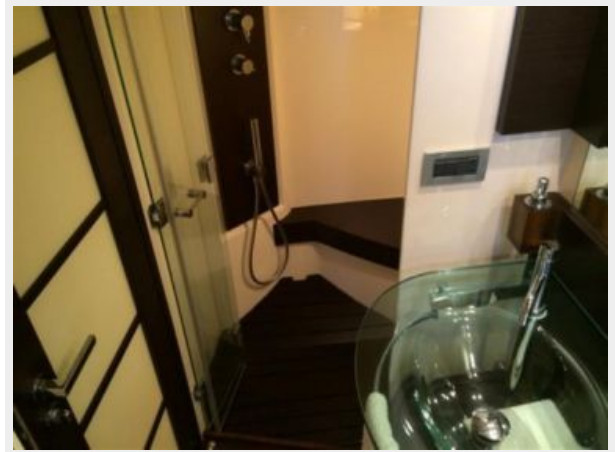




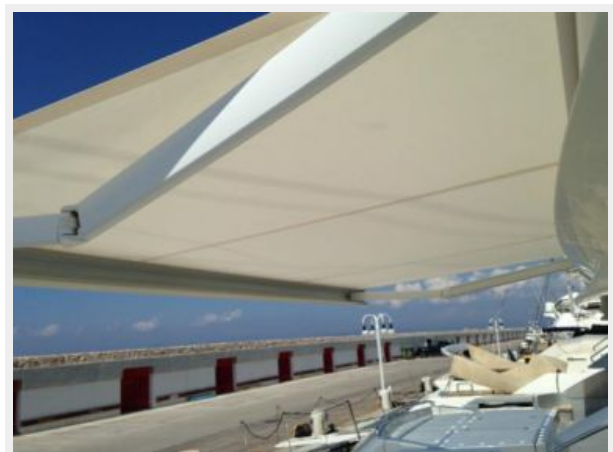




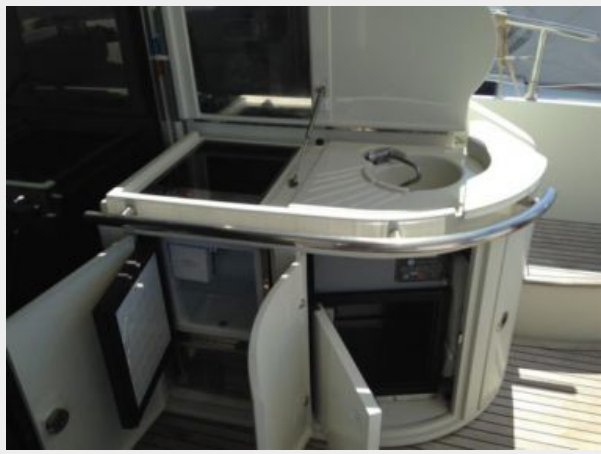












CONTACTS

Andrey Shestakov, leading yacht broker of the sales department of Shestakov Yacht Sales Inc. Shestakov Yacht Sales Inc., the official representative of the Miami/Fort Lauderdale FL headquarters.

Contact details

Email: andrey@shestakovyachtsales.com

Web: shestakovyachtsales.com/en/

Telephones

USA: +1(954)274-4435

Office hours

Monday – Saturday: **9:00 - 21:00** EDT

Sunday: **closed**

Address



Harbour Towne Marina, 850 NE 3rd St,
STE 213, Dania, FL 33004