

AQUARIAN — ALBIN



Builder: ALBIN

Year Built: 1981

Model: Cruiser

Price: PRICE ON APPLICATION

Location: United States

LOA: 43' 0" (13.11m)

Beam: 14' 6" (4.42m)

Max Draft: 4' 1" (1.24m)

Our experienced yacht broker, Andrey Shestakov, will help you choose and buy a yacht that best suits your needs **Aquarian — ALBIN** from our catalogue. Presently, at Shestakov Yacht Sales Inc., we have a wide variety of yachts available on our sale's list. We also work in close contact with all the big yacht manufacturers from all over the world.

If you would like to buy a yacht **Aquarian — ALBIN** or would like help answering any questions concerning purchasing, selling or chartering a yacht, please call **+1(954)274-4435**

TABLE OF CONTENTS

TABLE OF CONTENTS	2
SPECIFICATIONS	3
Overview	3
Basic Information	4
Dimensions	4
Speed, Capacities and Weight	4
Accommodations	4
Hull and Deck Information	4
Engine Information	5
PHOTOS	6
CONTACTS	12
Contact details	12
Telephones	12
Office hours	12
Address	12

SPECIFICATIONS

Overview

This 1981 Albin is the perfect project boat for someone who is handy with wood and fiberglass work.

The incredibly low asking price is to facilitate a quick sale to someone who wants a live aboard while fixing up this very strong vessel.

AQUARIAN has was briefly sunk to deck level years ago and the owner was in the process of doing a complete rebuild, but health issues have come about.

The Perkins engines run well and the generator will run but is loosing water. The wood interior is mostly intact but needs finished, the electronics are working.

Boat Name Aquarian **Dimensions** LOA: 43 ft 0 in Beam: 14 ft 6 in Maximum Draft: 4 ft 1 in Dry Weight: 30000 lbs **Engines** Engine 1: Engine Brand: Volvo Penta Year Built: 1981 Engine Type: Inboard Engine/Fuel Type: Diesel Location: Port Drive Type: Direct Drive Engine Power: 130 HP Engine 2: Engine Brand: Volvo Penta Year Built: 1981 Engine Type: Inboard Engine/Fuel Type: Diesel Location: Starboard Drive Type: Direct Drive Engine Power: 130 HP **Tanks** Fresh Water Tanks: 2 (150 Gallons) Fuel Tanks: (500 Gallons) Holding Tanks: 2 (30 Gallons) **Accommodations** Number of twin berths: 2 Number of cabins: 2 Number of heads: 2

Galley

- Force 10 Propane oven/stove
- Emerson Microwave
- Sea Frost Fridge/Freezer

Accommodations

- 1400 BTU AC
- 1200 BTU AC
- Excellent dinning and living area
- Large forward V-Birth with Head
- Queen size Berth in aft cabin with individual Head and Shower.
-

Electronics

- 10 KW Westerbeke Generator, Running but has water leak.
- 3000 Zantrex inverter

Tender

- 10'7" Nouvarania with 6hp 4 Stoke Mercury. Extra parts engine
- Automatic Bilge Pump.

Basic Information

Category: Cruiser

Model Year: 1981

Year Built: 1981

Country: United States

Dimensions

LOA: 43' 0" (13.11m)

Beam: 14' 6" (4.42m)

Max Draft: 4' 1" (1.24m)

Speed, Capacities and Weight

Displacement: 30000 Pounds

Water Capacity: 300 Gallons

Holding Tank: 60 Gallons

Fuel Capacity: 500 Gallons

Accommodations

Total Cabins: 2

Total Berths: 2

Total Heads: 2

Hull and Deck Information

Hull Material: Fiberglass

Engine Information

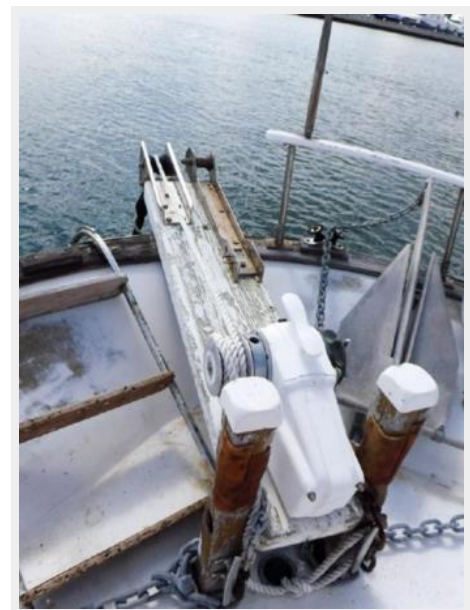
Engines: 2

Manufacturer: Volvo Penta

Engine Type: Inboard

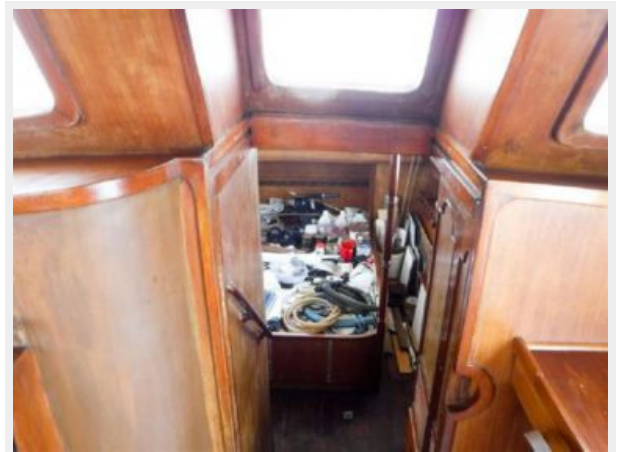
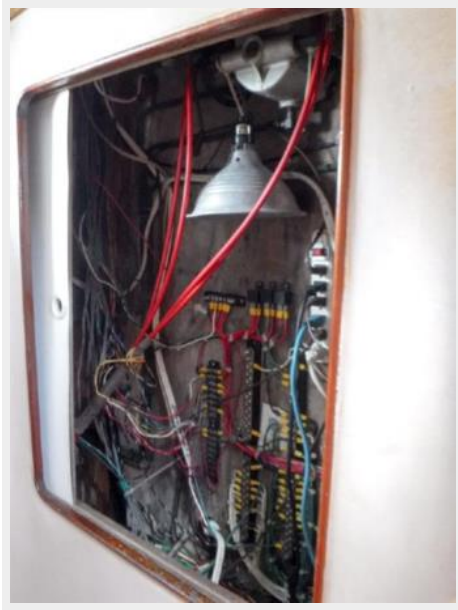
Fuel Type: Diesel

PHOTOS













CONTACTS

Andrey Shestakov, leading yacht broker of the sales department of Shestakov Yacht Sales Inc. Shestakov Yacht Sales Inc., the official representative of the Miami/Fort Lauderdale FL headquarters.

Contact details

Email: andrey@shestakovyachtsales.com

Web: shestakovyachtsales.com/en/

Telephones

USA: +1(954)274-4435

Office hours

Monday – Saturday: **9:00 - 21:00** EDT

Sunday: **closed**

Address



Harbour Towne Marina, 850 NE 3rd St,
STE 213, Dania, FL 33004