

## RESTLESS — HARGRAVE



**Судостроитель:** HARGRAVE

**Год постройки:** 2005

**Модель:** Моторная яхта

**Цена:** **ЦЕНА ЯХТЫ ПО ЗАПРОСУ**

**Местонахождение:** United States

**Длина общая:** 96' 0" (29.26m)

**Ширина:** 20' 0" (6.10m)

**Мин. осадка:** 5' 6" (1.68m)

**Крейс. скорость:** 12 Kts. (14 MPH)

**Макс. скорость:** 20 Kts. (23 MPH)

Купить **RESTLESS — HARGRAVE** а также выбрать подходящую вам яхту из нашего каталога яхт вам поможет опытный яхтенный брокер Андрей Шестаков. На сегодняшний день компания **Shestakov Yacht Sales Inc.** имеет большое количество яхт в собственном списке продаж, а также тесно сотрудничает со всеми крупными яхтенными производителями по всему миру.

Для того чтобы купить яхту **RESTLESS — HARGRAVE** а также проконсультироваться по любому вопросу связанному с покупкой, продажей, чартером яхт позвоните по телефону **+7(918)465-66-44**.

# ОГЛАВЛЕНИЕ

|                                    |    |
|------------------------------------|----|
| ОГЛАВЛЕНИЕ                         | 2  |
| ХАРАКТЕРИСТИКИ                     | 5  |
| Основная информация                | 5  |
| Размеры                            | 5  |
| Скорость, вместимость и масса      | 5  |
| Размещение                         | 5  |
| Корпус и палуба                    | 6  |
| Информация о двигателе             | 6  |
| ПОДРОБНОЕ ОПИСАНИЕ                 | 7  |
| 96' Hargrave Motor Yacht RESTLESS  | 7  |
| EQUIPMENT                          | 7  |
| SALON                              | 7  |
| AFT DECK                           | 8  |
| DINING                             | 8  |
| GALLEY                             | 9  |
| SPIRAL STAIRCASE WITH WINE CABINET | 9  |
| DAY HEAD                           | 9  |
| SKY LOUNGE AND BOAT DECK           | 10 |
| BOW                                | 10 |
| FOYER                              | 10 |
| MASTER SUITE                       | 10 |
| VIP STATEROOM                      | 11 |
| GUEST STATEROOM/TWIN               | 11 |
| GUEST STATEROOM/QUEEN              | 11 |
| CREW LOUNGE                        | 11 |
| CREW QUARTERS                      | 12 |
| TECHNICAL AND EQUIPMENT            | 12 |
| ELECTRICAL                         | 12 |

|                                    |    |
|------------------------------------|----|
| HYDRAULICS                         | 12 |
| BRIGHTWORK, ANCHORING AND STEERING | 12 |
| A/C                                | 13 |
| EXTERIOR EQUIPMENT                 | 13 |
| ENGINE ROOM                        | 13 |
| ELECTRONICS                        | 14 |
| APPLIANCES                         | 14 |
| INTERIOR EQUIPMENT                 | 14 |
| AUDIO AND VISUAL EQUIPMENT         | 15 |
| EXCLUSIONS                         | 16 |
| Исключения                         | 16 |
| Отказ от ответственности           | 16 |
| ФОТОГРАФИИ                         | 17 |
| Flybridge                          | 17 |
| Flybridge                          | 17 |
| Sunpad                             | 17 |
| Aft Dining                         | 17 |
| Dinette                            | 17 |
| Salon                              | 17 |
| Salon                              | 18 |
| Salon                              | 18 |
| Dining                             | 18 |
| Dining                             | 18 |
| Pilothouse                         | 18 |
| Pilothouse Seating                 | 18 |
| Master Bathroom                    | 19 |
| Master Stateroom                   | 19 |
| Guest Stateroom                    | 19 |
| Guest Stateroom                    | 19 |

---

|                       |    |
|-----------------------|----|
| Guest Stateroom       | 19 |
| КОНТАКТЫ              | 20 |
| Контактная информация | 20 |
| Телефоны              | 20 |
| Время работы          | 20 |
| Адрес                 | 20 |

# ХАРАКТЕРИСТИКИ

## Основная информация

Тип судна: Моторная яхта

Модельный год: 2005

Год постройки: 2005

Год обновления: 2012

Страна: United States

## Размеры

Длина общая: 96' 0" (29.26m)

Длина по ватерлинии: 85' 5" (26.03m)

Ширина: 20' 0" (6.10m)

Мин. осадка: 5' 6" (1.68m)

Трапы: 37' 2" (11.33m)

## Скорость, вместимость и масса

Крейс. скорость: 12 Kts. (14 MPH)

Крейсерская скорость поворота: 1350 Kts.

Макс. скорость: 20 Kts. (23 MPH)

Вместимость воды: 600 Gallons

Вместимость сточного бака: 100 Gallons Объем топливного бака: 3429 Gallons

## Размещение

Всего кают: 4

Спальные места: 9

Всего ком. состава: 5

Каюты экипажа: 2

Койки экипажа: 4

## Корпус и палуба

---

**Материал корпуса:** Fiberglass

**Комплектация корпуса:** Semi-Displacement

## Информация о двигателе

---

**Двигатели:** 2

**Производитель:** Caterpillar

**Модель:** C-30

**Тип двигателя:** I/O

**Тип топлива:** Diesel

---

# ПОДРОБНОЕ ОПИСАНИЕ

---

## 96' Hargrave Motor Yacht RESTLESS

---

The 96' Hargrave Motor Yacht RESTLESS is an outstanding example of Hargrave's capabilities, with the volume and facilities rarely found on vessels of 29m, giving the feel of a considerably larger platform. Restless is ready to be enjoyed by a new owner without delay, having benefitted from extensive investment over the years and with refit in 2012 that included the following: New A/V Re-designed main salon Re-designed double suite Re-lacquered guest areas and main salon New laundry equipment Multiple new Navigation Systems New hydraulic system A/C system re-build 2014 220V system installed in the engine room New tender outboard (2014) Not all Hargrave's are the same and Restless is genuinely one of the stand-out vessels that needs to be seen first-hand.

## EQUIPMENT

---

Genset Model: Northern Light x 2 (Port: 3529 hours, Starboard: 3553 hours; Nov. 2014) Genset kW: 33KW X 2 AC Voltage: 220 / 110 V @ 60 Hz DC Voltage: 24/12 V Water makers: Sea Recovery x 2 (1: 590 hours, 2: 462 hours; Nov. 2014) Air-conditioning System Compressors x 4 (complete overhaul summer 2014)

## SALON

---

The Salon, done in a cool, fresh, contemporary look complete with Cantaloupe LED RGB lighting, bone-white carpet and plush custom sofas with storage under each cushion. Keeping with Hargrave tradition, the walls are high gloss cherry with the cabinets and counter tops inset with gloss camphor burl. The bar has white translucent Corian with a single piece matching floor behind. The lighting fixtures feature translucent white and stainless steel with white LED back lighting. A 52' Flat Screen TV was added encased in LED colour changing lighting as well. The Crestron/Denon AV/IT Surround Sound system with a universal control was added in 2012 and also closes the Hunter Douglas shades.

- Carpet/flooring: White Carpet
- Cabinetry and Finish: Walls are gloss cherry, as well as the cabinets
- Detail Wood: Gloss camphor burl
- Counter Tops: Gloss camphor burl
- Bar Top: The bar has White Translucent Crian with a white single piece matching floor behind.
- Counters and floors: Lighting Fixtures: Translucent White and Stainless Steel
- Ceiling Treatment: Rectangular gloss cherry with a brown leather crown and white panels with Cantaloupe colour changing LED lights over salon.
- Special Details: Wet Bar

- Furniture: Custom Sofa sectional, Ottoman with storage, 2 Leather Recliners, Dining Chairs, reclining and upholstered in white leather
- Translucent White Hunter Douglas shades with automatic controls

## AFT DECK

---

The Californian Deck fitted with built-in settee and chairs surrounding a pedestal dining/cocktail table, ladder to bridge deck and twin stairways to swim platform.

Flooring: Teak

Table: New High gloss dining table with polished stainless steel hi/lo

Counter Tops: Translucent White Corian

19" HD flat panel Sunbrite weather-proof TV mounted on a stainless steel stanchion

Sub-Zero 700 Series SS two drawer refrigerator

Custom made storage unit with High gloss white finish

Storage cupboards

2 boarding stairways with storage on both sides of deck

Opacmare Twin extension passerelle

Large full beam Lazerette on swimming platform containing:

3 x buoyancy jackets

1 x quake towable donut water toy

2 x Connely skis

1 x JWB wakeboard

2 x inflatable stand-up paddleboard with paddles

4 x sea scooter RS 1 / RS2 with spare batteries

2 x inflatable kayaks

1 set of dive gear including 20 metres umbilical hose

## DINING

---



The forward bulkhead in the dining area is upholstered in white leather with horizontal Cantaloupe colour changing RGB LED lights. The ceiling features rectangular gloss cherry with a brown leather crown and white panels with Cantaloupe colour changing RGB LED lighting as well. Round dining table that seats eight, separated by the arm of an L-shaped lounge from the salon. Special Features: A round brown leather wrapped crown with Cantaloupe colour changing LED lights in an overhead translucent white circular light fixture. Forward bulkhead in Dining Area is upholstered in white leather with horizontal Cantaloupe color changing LED lights Round High Gloss Cherry dining Table with pedestal base

## **GALLEY**

---

The large Country-Style galley is arranged and equipped to serve large gatherings for formal dining or casual receptions with a raised settee forward. On the opposite side is a good size island cabinet with a granite top, which can be used for food preparation, buffet or dining. The other walls are high gloss cherry with granite tops. All appliances are GE Profile and Sub Zero, featuring the freezer and refrigerator drawers, a 220v Miele induction hob and dishwasher. All the counters have under counter lighting and there is a wood and glass table at the dinette. The window treatment in the galley are white fabric blinds all round.

Flooring: Amtico teak and holly

Cabinetry and Finish: Gloss Cherry

Counter Tops: "Santa Cecelia" Granite

Ceiling: White Leather

Appliance Finish: Stainless Steel - GE Profile, Sub Zero and Miele brands, multiple freezers and refrigerators

Special Details: Under counter lights, Wood and glass table at dinette, white fabric blinds

## **SPIRAL STAIRCASE WITH WINE CABINET**

---

Amidships a circular staircase leads upward to the Sky Lounge or below to the guest quarters and owners suite. Beside the circular staircase on the main deck a wine storage cabinet in high gloss cherry holding approx. 30 bottles.

## **DAY HEAD**

---

- Flooring: "Selvia" marble
- Cabinetry & Finish: Gloss Cherry

- Detail Wood: Gloss camphor burl, cherry framed mirror
- Counter Tops: "Selvia" marble
- Plumbing Fixtures: Deca

---

## SKY LOUNGE AND BOAT DECK

---

Going up to the Sky Lounge which features captain and companion chairs, a ships desk, under helm twin Sub-Zero freezer and to port a bar cabinet with ice maker and refrigerator. There is a white fabric raised settee, built into the after port quadrant of the wheelhouse for relaxation, to admire the view or watch the 52' flat screen with surround sound. The exterior deck at this level has been extended well aft, both to protect the California deck from the elements, and to accommodate a large U-shaped lounge, outdoor bar, gas grill and sun awning. This level also features a wonderful spa tub, with yet more space for tender and davit. When the tender is not stored on deck, the full aft deck is converted into a lounge area for guests with teak chairs and umbrellas. Flooring: Flexi Teak on outer deck and holly beneath helm's chairs and desk. Bone-White carpet completes the Sky Lounge Flooring Cabinetry and Finish: Gloss Cherry Detail Wood: Gloss camphor burl Counter Tops: Upholstered console top and gloss camphor burl Lighting Fixtures: LED Lights in Ceiling Panels Special Details: U-line refrigerator and icemaker Helm Chairs: Stidd L-shaped settee: white stain-resistant fabric and hi/lo coffee table Audio/Visual: 52' flat panel with HD Sat /TV on remote lift AV/IT Crestron System with Denon Equipment Quick Lift 2000lb. Low profile davit with hydraulic rotation 15' Nautica tender with 100 HP Yamaha outboard (engine new 2014)

---

## BOW

---

The bow area is a very useable and enjoyable guest area, with access from the starboard side of the galley. Sunpad Bench Seat Storage

---

## FOYER

---

Going below there is a lower foyer with bone-white carpet, high gloss cherry walls and ceiling treatment with crown moulding and recessed LED lighting. The walls are mirror with white leather inlay. There is a storage pantry and laundry cabinet with GE stacked full sized washer/dryer. Carpet Cabinetry & Finish: Gloss cherry Detail Wood: Gloss camphor burl Ceiling Treatment: Gloss cherry ceiling treatment with satin cherry crown moulding details with recessed lighting Walls: Mirrors with white leather in-lay Pantry for extra storage GE Stacked full sized Washer/Dryer

---

## MASTER SUITE

---

Located aft is the master stateroom with gloss cherry cabinetry with camphor burl counter tops, king size bed with a white leather and mirror in-lay head board/wall with gloss cherry night stands with flex LED reading lights. Special details include sliding back lit Shoji screens over the windows, under bed lighting, a DENON/Crestron AV/IT system, 52' flat screen HD SAT/TV and a U-line Refrigerator. The master bath has "Selvia" marble, gloss cherry and gloss camphor burl cabinets as well as marble floors and counters, frameless glass walk-through shower and oversized Kohler jetted tub. Bath is full beam with separate his & hers vanities Cabinetry & Finish: Gloss cherry Detail Wood: Gloss camphor burl on top of nightstands, counters, and dressers Counter Tops: Gloss camphor burl Ceiling Treatment: White leather panels Head: The head has "Selvia" marble, gloss cherry and gloss camphor burl cabinets as well as marble floors and counters, Frameless Glass Walk-through Shower and oversized Kohler tub. Special Details: Rope lights behind Shoji screens and under bed Settee: Upholstered White Leather U-line Refrigerator Denon/Crestron AV/IT system 52' flat panel with HD SAT/TV U-Line 2015R Refrigerator Owners Safe

---

## VIP STATEROOM

---

Moving forward is the VIP Stateroom with a double shower. Flooring: bone-white carpet Cabinetry & Finish: Gloss cherry Detail Wood: Gloss camphor burl Counter Tops: Gloss camphor burl on vanity and nightstands Special Details: Full extension sides on drawers under bed, TV recessed into wall and Kohler fixtures in head. Window Treatment: Shoji screens in Jab-Tassilo design En Suite shower, vanity, and head

---

## GUEST STATEROOM/TWIN

---

The port guest stateroom has convertible twin berths with a Pullman berth. The decor finish in these rooms is the same as in the rest of the vessel.

- Gloss Cherry Wood with Camphor Burl counter tops
- Pullman berth
- Chrome fixtures in bathroom
- En Suite shower, vanity and head

---

## GUEST STATEROOM/QUEEN

---

The starboard guest stateroom had a queen-size bed with under bed draws, TV with DVD/CD player. Gloss Cherry Wood with Camphor Burl counter tops Pullman berth Chrome fixtures in bathroom En Suite shower, vanity and head

---

## CREW LOUNGE

---

Forward and down a private stairway from the galley area is the crew lounge. Special Features: Miele washing machine and Dryer (2012) 15' flat panel TV in Lounge and Captain Cabin 2 X DVD players in Twin bunks

---

## CREW QUARTERS

---

Double captain's cabin and a crew cabin with upper and lower bunks and shared head with shower.

---

## TECHNICAL AND EQUIPMENT

---

- Fiberglass hand laid hull & stringers vacuum bagged with foam core reinforcement
- Stringers bonded to hull encapsulated in several layers of glass cloth & resin
- Deck & superstructure with foam cored reinforcement under fiberglass
- FRP Main Deck and floors
- Fibreglass engine beds, bonded to hull with load distributed on steel channels
- Single layer of sound and heat insulation in engine room bulkhead fwd, aft and ceiling
- Teak (aft deck and swim platform)
- Stainless Steel exterior Portholes
- Teak swim platform with stainless steel ladder
- (6) Underwater lights

---

## ELECTRICAL

---

(2) 33 kW Northern Lights Generators with soundshield with water drop exhaust, (3000 hours in Nov. 2014) Atlas shorepower converter system 220v, 110v and 60Hz Electrical System Colour coded wiring throughout (8) 200 amp/hr batteries for engine & ship power (3) Professional battery chargers Separate 120 amp/hr battery for generators All batteries in FRP battery boxes Main electrical panel with separate AC Power control and circuit breaker panel 110 volt duplex receptacles located throughout vessel, including engine room 100 AMP Galvanic Isolator

---

## HYDRAULICS

---

Naiad stabilizer system Model 302 with 9 sq. ft. fin with multisea 2000 double stabilizer Hydraulic Bow Thruster HPS-36 hp Hydraulic steering by Hynautic, adaptable to auto-pilot

---

## BRIGHTWORK, ANCHORING AND STEERING

---

All handrails, stanchions and fittings made of stainless steel 316 alloy 1 1/2' Stainless Steel handrail with 1 1/2' stanchions Maxwell Nilson Bow windlass VWC 4500C with 250lb anchor &

125 metres chain Additional Maxwell VC 2200 stern capstan X 2 stainless steel cleats (8)  
 Stainless Steel anchor (250lb) with 125 metre chain, additional controls on bridge Maxwell 4000  
 24V windlass 3-1/2' stainless steel shafts 4 Blade bronze propellers Emergency tiller Stainless  
 steel rudders Remote windlass operation from Pilothouse

## A/C

Cruise Air Chilled Water System (4) 3 Ton Compressors Backup P3000BXT A/C Sea Water  
 Pump (3) Sentry / Dolphin AC/DC light transformer 110 / 24 v Security breaker for AC power

## EXTERIOR EQUIPMENT

Two additional coats of Vinylester Resin below waterline 2' Stainless Steel handrails Extra 2'  
 stainless oval hull banding with wood insert Teak aft deck chairs x 5 S/S Ladder from boat deck  
 to roof Engine Room Entry hatch with ladder on Aft Deck Boat deck bar en cabinet Aft deck bar  
 cabinet with translucent top Aft deck teak table Aft deck bench seating Aft deck custom made  
 storage unit 4 U-shaped hand rails on swim platform Opacmare passerelle on swim platform  
 Stainless steel 10' Pop-up Cleats (3) on Swim Platform Stainless steel oval portholes 8  
 waterproof lights Par flood lights x 4 All exterior lights to be stainless steel Roller Hawsers on Aft  
 Deck (2) Full size propane style gas BBQ Custom FRP Seating on Boat Deck and Aft Deck  
 Custom Cocktail Table with Corian top and imbedded Cantaloupe colour changing LED lights  
 Boat Deck TV/Cable outlet inside cabinet on boat deck by Jacuzzi TV/Cable & AC power outlet  
 above locker for port table TV at aft deck Hot Tub on Boat Deck Kahlenber Air Horns KOA  
 Chrome 24 V

## ENGINE ROOM

Double insulated engine room Watertight bulkheads in engine room Backup pump on back of  
 port and starboard engine Additional PTO steering Pump Engine room Seafire Fire & Smoke  
 detectors (total 10 throughout boat) Raycor 1000 FG fuel filter/water separator for each engine  
 Simrad Auto Pilot with remote control Engine Alarm System for low pressure & high temperature  
 supplied by Cat Four (4) Jabsco Engine compartment blowers 24v lights and 110v power  
 receptacles in Engine room (4 each) + 230 V (1) power receptacle Custom engine exhaust with  
 cooling pumps Leviton High quality sockets and switches in all rooms Double Racor main  
 engines Racor 500 MA filter x 2 on Fuel Transfer Pump Inlet Through-hull fitting and wiring for  
 waste treatment system 24V lights in swim platform and breakers for underwater lights (2) Aft  
 Glendinning CM8 100 Amp Cablemaster with 100' Cord Auxiliary shore power connection  
 forward 100 AMP with 75 ' Cord Glendinning Engine Controls with 1 remote Tide Seal Dripless  
 shaft logs and rudder post (2) Torrid 30 Gal. Water Heater Jabsco Emergency Bilge Pump  
 18330-0000 Battery Chargers: 1-100Amp (24V) / 1-30 Amp (24V) / 1-30Amp (12V) Safety  
 Handrails at sides of Main Engines Fuel Flow Meter Fuel Transfer Switch at Helm Fuel Transfer  
 Switch at Helm or Engine Room (2) Fuel Transfer pumps, Oberdorfer Reverso Oil Transfer pump

for engines and generators Delta T system with 4 blowers Second Switch in PH helm for emergency crash pump (2) Additional fluorescent lights over aft generator Manual button air doors (2) 100 AMP Plugs with TV & Phone plugs std side (2) Sea recovery Inc. Water makers (2) Reverre 8 person Life Raft (1) Survivor Tec 6 person Life Raft Headhunter waste treatment system Sump pumps (4) Y-Valve for dockside pump out Groco Sea Strainers City water inlet with filter system

## ELECTRONICS

Furuno 1953CBB 12KW 6' C - NT Furuno 1953 C 30 MTR Cable Upgrade Furuno PG 1000 Heading Sensor Furuno Network WAAS GPS Furuno Network GPS Ext Cable (2) Furuno 1933 CBB NT Radar Furuno 1933 C 30 MTR Cable Upgrade Furuno Network Cable Furuno Network WAAS GPS Furuno GPS Ext Cable Xantrex Prosine 1800/24 GFCL Xantrex 1000W Install Kit (2) Mini computers ICOM IC-M602 VHF Black ICOM IC-M423 VHF Black (new 2014) ICOM Flush Mount Kit 602 Danfort Compass 5' Digital 8' Dual Band Cell Antenna Digital 8' AM/FM Antenna Digital Custom Cable x 150 Panasonic PH T-7730-B Speaker Phone \* 8 Panasonic Cam 2 Colour Cams Ptz & Quad ACD RCL 100 8 Remote Spotlight x 2 Furuno Network sounder Furuno 525Y-BSD 50/200+Temp PIN Furuno 525T-BSD Ext Cable Furuno 525T Fairing Blacks-HS Furuno Network Cable 10 Mtr x 2 Furuno Network Hub Furuno NMEA 7 PIN Cable x 3 Furuno Network Hub Adaptors x 3 Nobeltec Visual Suite 7.0702 Nobeltec Region 9 Deluxe DVD Nobeltec ZR902 US East Coast Nobeltec Dongle, USB Concord VGA to NTSC Conv Nauticomp Matrix Super Switcher x 3 Concord Video Splitter / AMP 2-Way x 3 Concord NMEA Selector Switch 2-Way Concord NMEA Selector Switch 3-Way Telular SX5E Panasonic PH KX-T7885 Cordless Panasonic Cam Video Dist Amp KVH Tracvision 6 Furuno NMEA 6 PIN Data Cable x2 Tropica 5' KVH TV6 / G6 Tower Mount Tropica Shim Kit 5' Track 4 Mount Panasonic CAM PA-WVCS854 Dome Panasonic CAM Camera Cable x 65 3 Big Bay Flat screen monitors Lowrance VHF Handheld with GPS 2 X Icom VHF Handheld 2 X Printers with Computer on Bridge

## APPLIANCES

LAUNDRY GE WSM27000WW Washer and Dryer in Foyer Miele Touchtronic T8013 C Dryer Miele Touchtrone W3033 Washing machine GALLEY GE Profile PS 123SGB Refrigerator Miele Cooktop Manitowox Icemaker GE Profile Oven Sub-Zero Freezer Drawer Miele Dishwasher Sub-Zero 424 Wine cooler Sub-Zero 700 BR S/S Fridge Drawer GE GFC720F Disposal DACOR EW024 Warming Drawer Miele DA326 Exhaust Hood GE Profile JEM31SF Microwave SKY LOUNGE/SALON U-Line 15R refrigerator U-Line BI-95 Ice Maker U-Line refrigerator in Salon Bar Sub-Zero 700 BF Black freezer drawers BOATDECK U-Line 2015R White Refrigerator U-Line WH95TP Ice Maker

## INTERIOR EQUIPMENT

Indirect rope lighting under valances in salon staterooms, sky lounge and galley Vinyl covered ceiling design throughout Italian door handle package (chrome or gold) Push/Pull German latches (chrome or gold) Delta T vent system Removable white vinyl headliner panel system Recessed Tray ceiling in salon Lights in closet on micro switches Cantaloupe 24v ceiling lights (chrome or gold) Hunter Douglas Silhouette Shades in main salon & sky lounge with remote controls Marble or Granite counter tops in all bathrooms Full Walk-in Shower and Jacuzzi tub in master bathroom Safe in master cabin Escape hatch from master Shoe rack in master Stidd Helm and Passenger seats in Sky lounge Majilite Upholstery with Cherry Strips in Main Deck & Lower Cabins Additional layer of insulation on Master stateroom bulkhead Marble shower seat in VIP, Port Twin, master and crew shower Marble floor in master, guest bathrooms and day head Franke PRX120 Sink in Galley Cherry Gloss wood cabinets in Galley Shoji Screens for 4 Staterooms and Heads 7 Head Hunter Heads (fresh water flush) Porthole in galley sliding door Recessed sliding door in between Galley and dining area Custom Design Wine Storage cabinet in dining area - all cabinetry with built-in glass & dishware plexiglass holders Recessed dining soffit with cantaloupe LED colour changing light fixture Crown Moulding in foyer, salon, dayhead, skylounge Custom design stair case railings from lower accommodation to salon and from salon to skylounge White leather panels with LED accent lighting Grohe Faucets in crew, Queen, TWIN Vimar lights switches with dimmers

## AUDIO AND VISUAL EQUIPMENT

Crestron AV/IT system in all areas of vessel SALON 1 SKY HD receiver 2 NUVO digital power amplifiers 1 Denon Ipod dock station 1 Denon DBT331 3U DCI DVD-player 1 Integrated network AV receiver Samsung Plasma 52' Denon AVR-2803 Receiver Subwoofer 3x Sonance speakers SKYLOUNGE Sony Plasma 42' KE42TS2 Denon AVR – 2313 Receiver Denon DVD Player SKY HD receiver Sony Plasma 42' KE42TS2 Denon AVR-2803 Receiver Denon DVD Player Canton Subwoofer KVH mini VSAT controller Sony Playstation 3 Sonance 622TR Symphony Series x3 Pinnacle 6' Dual Sub-woof Sonace Extreme XTR Marine Speakers mounted in skylounge/aft deck MASTER Samsung Plasma 52' DVD Denon Sonance 622TR Symphony Series Concord Monster Cables Concord Surge Outlet Strip Sonance 622TR Symphony series VIP Sharp 20' LCD TV SB-Black Peerless Bulkhead Mount Sharp E1U Pioneer DVH-P7000 AM/FM/CD/DVD Sonance 622 TR Symphony Series TWIN Sharp 15' LCD TV SB Peerless Bulkhead Mount sharp E1U DVD player in twin with iPod connection Sonance 622TR Symphone Series DOUBLE Sharp 15' LCD TV SB Peerless Bulkhead Mount sharp E1U DVD player in queen with iPod connection Sonance 622TR Symphone Series Concord IR Expansion GALLEY Sharp 20' LCD TV SB-Black Peerless Bulkhead Mount Sharp E1U CREW Sharp 15' LCD TV mounted in crew lounge Peerless Bulkhead Swivel Mount Sharp E1U Audiovox Drop Down LCD DVD TV mounted in crew 1 top bunk Audiovox IR Headphones mounted in crew 1 top bunk Audiovox Drop Down LCD DVD TV mounted in crew bottom bunk Audiovox IR Headphones mounted in crew bottom bunk CAPTAIN Sharp 15' LCD TV Peerless Bulkhead Mount Sharp E1U Pioneer DVH-P7000 DVD/CD/XM Pioneer Upgrade for AUX EXTERIOR Sonance Extreme XTR Marine Speakers mounted on aft deck Sonance Extreme XTR Marine Speakers mounted on bow CCTV system

---

## EXCLUSIONS

---

Owner's personal effects, art work and statues are not included. A detailed list is available prior to any written offer.

---

## Исключения

---

При продаже яхты исключаются личные вещи владельца.

---

## Отказ от ответственности

---

Компания предоставляет описание судна или яхты добросовестно, но не может гарантировать точность этой информации, а также не ручается за техническое состояние. Покупатель должен проинструктировать своих агентов или оценщиков исследовать представленную информацию более подробно, по собственному желанию. Продажа судна или яхты, изменение цены или снятие с продажи будет происходить без предварительного уведомления.



# ФОТОГРАФИИ

**Flybridge**



**Flybridge**



**Sunpad**



**Aft Dining**



**Dinette**



**Salon**



**Salon**



**Salon**



**Dining**



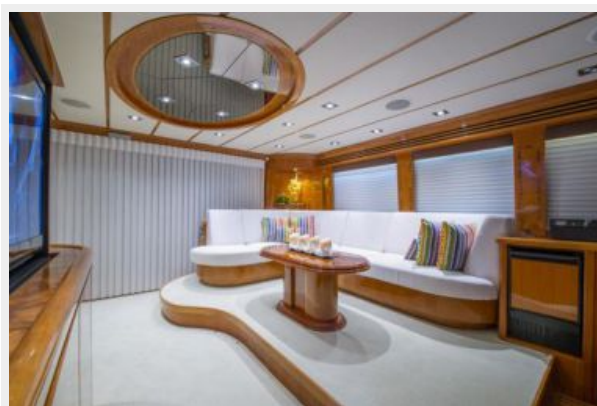
**Dining**



**Pilothouse**



**Pilothouse Seating**



**Master Stateroom**



**Master Bathroom**



**Guest Stateroom**



**Guest Stateroom**



**Guest Stateroom**



# КОНТАКТЫ

---

Андрей Шестаков (Andrey Shestakov) – ведущий яхтенный брокер отдела продаж яхт и судов компании Shestakov Yacht Sales Inc. Официальный представитель Shestakov Yacht Sales Inc. для русскоговорящих клиентов в центральном офисе компании в Майами/Форт Лодердейл/Флорида/США.

## Контактная информация

---

Email: [andrey@shestakovyachtsales.com](mailto:andrey@shestakovyachtsales.com)

Web: [shestakovyachtsales.com](http://shestakovyachtsales.com)

## Телефоны

---

Краснодарский край: **+7(918)465-66-44**

США, Майами, Флорида: **+1(954)274-4435**

## Время работы

---

Понедельник – Суббота: **9:00 - 21:00**  
EDT

Воскресенье: **Закрито**

## Адрес

---



Harbour Towne Marina, 850 NE 3rd St,  
STE 213, Dania, FL 33004