

MARGARITA *NAME RESERVED* — BURGER



Судостроитель: BURGER

Год постройки: 2001

Модель: Моторная яхта

Цена: ЦЕНА ЯХТЫ ПО ЗАПРОСУ

Местонахождение: United States

Длина общая: 85' 0" (25.91m)

Ширина: 20' 6" (6.25m)

Макс. осадка: 5' 6" (1.68m)

Крейс. скорость: 18 Kts. (21 MPH)

Макс. скорость: 22 Kts. (25 MPH)

Купить MARGARITA *Name Reserved* — BURGER а также выбрать подходящую вам яхту из нашего каталога яхт вам поможет опытный яхтенный брокер Андрей Шестаков. На сегодняшний день компания Shestakov Yacht Sales Inc. имеет большое количество яхт в собственном списке продаж, а также тесно сотрудничает со всеми крупными яхтенными производителями по всему миру. Для того чтобы купить яхту MARGARITA *Name Reserved* — BURGER а также проконсультироваться по любому вопросу связанному с покупкой, продажей, чартером яхт позвоните по телефону +7(918)465-66-44.

ОГЛАВЛЕНИЕ

ОГЛАВЛЕНИЕ	2
ХАРАКТЕРИСТИКИ	5
Обзор	5
Основная информация	5
Размеры	5
Скорость, вместимость и масса	5
Размещение	5
Корпус и палуба	5
Информация о двигателе	6
ПОДРОБНОЕ ОПИСАНИЕ	7
Overview	7
Accommodations	7
Main Deck	7
Pilothouse	8
Flybridge	8
Galley	9
Salon	9
Aft Deck	10
Engine Room	10
Electrical Equipment	10
Mechanical Equipment	10
Deck and Hull	11
Electronics	12
Remarks	13
Исключения	13
Отказ от ответственности	13
ФОТОГРАФИИ	14
Salon	14

Salon	14
Salon	14
Salon	14
Dining	14
Dining	14
Galley	15
Day Head	15
Stairs to Companionway	15
Master Stateroom	15
Master Stateroom	15
Master Stateroom	15
Master Bath	16
VIP Stateroom	16
Twin Guest Stateroom	16
Pilothouse Helm	16
Pilothouse Seating	16
Flybridge	16
Flybridge Helm	17
Flybridge Seating	17
Flybridge Seating	17
Aft Deck	17
Aft Deck	17
Engine Room	18
Engine Room	18
GA	18
КОНТАКТЫ	19
Контактная информация	19
Телефоны	19
Время работы	19

Адрес

19

ХАРАКТЕРИСТИКИ

Обзор

MARGARITA is a "ten" in both condition and overall design and engineering. Now seriously for sale here is a combination of a great boat at a great price. Caterpillar Platinum Extended Warranties through November 2019.

Основная информация

Тип судна: Моторная яхта

Модельный год: 2001

Год постройки: 2001

Страна: United States

Размеры

Длина общая: 85' 0" (25.91m)

Ширина: 20' 6" (6.25m)

Макс. осадка: 5' 6" (1.68m)

Скорость, вместимость и масса

Крейс. скорость: 18 Kts. (21 MPH)

Макс. скорость: 22 Kts. (25 MPH)

Вместимость воды: 800 Gallons

Объем топливного бака: 5050 Gallons

Размещение

Всего кают: 4

Спальные места: 8

Корпус и палуба

Материал корпуса: Aluminum

Комплектация корпуса: Semi-Displacement

Информация о двигателе

Двигатели: 2

Производитель: Caterpillar

Модель: C-32

Тип двигателя: Inboard

Тип топлива: Diesel

ПОДРОБНОЕ ОПИСАНИЕ

Overview

Custom built and continuing the longstanding ethic of the Burger Boat Company, MARGARITA is unique and masterfully built. Large salon windows and incredible headroom throughout highlight the richly crafted Makore (African Cherry) woodwork. A separate and secluded master suite amidship is comparable in size to those on 100' yachts with amenities to match. There are three additional staterooms forward accessed by a separate staircase. The on deck day head, opposite the dining salon is elegant and features rare Rojo Cortlito marble counter top and floor tiles.

Accommodations

The full beam master suite is located amidship on the lower level, accessed via a private stairway from the main salon. There is a centerline king sized bed flanked by bedside cabinets and reading lamps. Facing the berth is the built-in entertainment center including a 55" Samsung HD TV, DVD, CD, DVR and surround sound amplifier. His and hers cedar lined, walk in closets are aft to port and starboard with built-in bureaus forward for abundant storage. Forward is the full width head and a large marble lined shower with Kohler's multi-head shower array and steam room feature. His and hers under mounted sinks and marble counter tops have plenty of additional storage beneath. A separate stacked washed and dryer is built into a laundry cabinet in the master head. The three guest staterooms are accessed by stairway from the pilothouse each with ensuite heads. The forward stateroom has a centerline queen berth with an upholstered headboard. Aft to port is an ensuite head with a marble lined shower. To starboard is a cedar lined hanging locker. Aft starboard is the VIP guest cabin, also with a queen bed, hanging locker, and an ensuite head with a marble lined shower. Opposite to port is a guest stateroom that can be used as a separate crew cabin with upper and lower berths, hanging closet, and an ensuite head with a marble lined shower. All staterooms are furnished with new Samsung flat screen TV's as well as with stereo speakers. There are phone sets in each stateroom as well as throughout the vessel utilizing the Panasonic Digital Hybrid system which integrates land lines, cell, sat-phone, and intercom functions. In the foyer area between the staterooms is a laundry station with stacked Bosch washer and dryer.

Main Deck

The main deck features full walk-around, teak laid side decks from bow to stern. The foredeck provides ample working area for docking and anchoring. There is a bow roller with an easily deployed stainless steel Bruce anchor. A bow seat is built into the forward end of the trunk cabin with storage beneath the seats. Additional cuddy storage behind the bow seat can be accessed from the port or starboard side decks with ample room for fenders, lines, ladders, and cleaning equipment.

Pilothouse

The forward pilothouse is accessed by sliding doors to port and starboard. There is excellent visibility through five, tempered glass windows forward, each with windshield washers and wipers. Large side windows and windows in the sliding doors enhance visibility as well. There is a single, Stidd adjustable chair at the helm and an L-shaped bench seat aft with a pedestal mounted table in front. The helm console has been updated with glass bridge technology featuring five multi-function display monitors. There is also a 25,000-watt radar in addition to new, color function Caterpillar main engine system monitors. Pilothouse Electronics:

- (2) KEP 15" glass bridge multi-function monitors
- (3) KEP 17" glass bridge multi-function monitors
- C-Plath Navipilot V autopilot
- Furuno 25,000-watt radar
- Furuno video depth recorder FCV582L
- Furuno Navtek receiver
- (2) Icom ICM504 VHF radios
- Caterpillar engine vision monitors
- Elbex closed circuit camera monitor (engine room & aft deck cameras)
- Koopnautic stabilizers (now Quantum)
- SM Satellite radio
- Quantum bow thruster
- Kobelt single lever engine controls
- Danforth 6" compass
- Multi-function display FURUNO NEMA 2000
- Burger BASICS vessel systems monitor
- Burger AMPS power management system
- Chelsea clock & barometer
- Carlisle & Finch search light

Flybridge

The flybridge stairway is on the starboard side of the pilothouse, protected by a one-piece, weather tight sliding hatch. There is an adjustable Stidd chair at the centerline helm with a built-in bench seat to port. Port and starboard wing stations have full controls for gears, throttles, bow thruster, and jog steering with rudder angle indicators. There are two Furuno 15" NavNet 3D display montiors. Aft of the flybridge helm area to starboard is a Keynon grill flanked by storage cabinets and a flush mounted sink. Opposite to port is a matching cabinet housing a Sub Zero refrigerator and Hoshizaki high capacity ice maker. Aft on both sides are matching L-shaped bench seats with storage beneath and pedestal mounted custom teak tables at each corner. A walk-through between the bench seats leads to the boat deck area sun pad with custom sail shade. Flybridge Electronics:

- Furuno 15" NavNet 3D chart plotter/radar units

- Furuno 72-mile radar
- C-Plath autopilot controls
- Furuno Nema 2000 multi function display
- Caterpillar engine Vision monitors
- Standard Horizon Spectrum VHF radio with loud hailer and fog horn
- Kobelt single lever engine controls
- Bow thruster controls
- Danforth 5" compass
- Fully integrated music system with water resistant remote control

Galley

Aft from the pilothouse is the U-shaped galley with biscuit tone granite countertops and abundant storage above and below. There is a large window outboard to port, above the sink. Overhead lighting as well as under counter lights highlight the galley. Opposite to port from the galley is the day head which also has a large window outboard with electronically operated blinds. The day head is exceptionally spacious and features marble counter top with matching marble tile flooring. Galley Appliances:

- Gaggenau 4-burner glass top range
- Gaggenau convection oven
- KitchenAid microwave/convection oven
- KitchenAid trash compactor
- Sub Zero refrigerator
- Sub Zero freezer drawer
- Bosch dishwasher
- Double stainless steel sink
- Franke instant water dispenser
- Soap dispenser
- Overhead stereo speakers
- Overhead lighting
- Central vacuum system

Salon

Aft from the galley the main salon opens up to a large and welcoming expanse of beautiful woodwork and custom built furnishings. Large windows along both sides and across the aft bulkhead provide terrific viewing while underway and allow for maximum natural light. There are concealed drop down electronically controlled Silhouette shades for all windows, ensuring privacy and sun protection as desired. The salon lighting is controlled by updated touch pad technology. Forward to port, in the main salon, is the custom Makoré dining table with exquisite woodwork inlay. Six matching chairs comfortably surround the round table. Opposite to starboard is the built-in wet bar with marble counter tops and an under mounted, black enamel sink. Built-in

below are storage lockers, a wine cooler, and a Hoshizaki ice maker. Aft in the main salon is a lounge area with a custom sofa with integrated storage, a custom chair, and coffee table with storage. To port, aft of the stairway to the owners' suite is the built-in entertainment center housing the vessel's primary audio and video equipment including a large Samsung 46" HD flat screen monitor that lowers out of sight when not in use.

Aft Deck

The aft deck offers al fresco dining at a pedestal mounted table with a built-in bench seat aft and pull up chairs. There is a single door in the aft bulkhead for access to the main salon. A gate in the transom to starboard provides access to the swim platform. There are boarding gates to port and starboard from the aft deck, as well as from the side decks midship.

Engine Room

The engine room is sound insulated and accessed from the swim platform through a watertight bulkhead and also from the inside of the vessel opposite the master stateroom, through a watertight bulkhead door. The engine room is full width with full, stand-up headroom. As with most Burgers, the engine room is a stunning exhibit of engineering at its best. All equipment and valves are labeled in proper marine fashion. The entire engine room was updated to today's standard. In 2011, two new Caterpillar C-32 engine were installed including all new control systems and engine systems monitors. Engine hours are approximately 675. The generators were also rebuilt at that time, with 1500 since rebuild. **The main engines are protected by Caterpillar's transferable Platinum Warranty through November 2019.** Performance data as follows: 10 knots - 24 gph 12 knots - 32 gph 18 knots - 125 gph 80% engine load 23 knots - Top speed

Electrical Equipment

- 12V & 24V DC systems
- 120 & 240V AC systems
- AC & DC lighting throughout
- 12V & 24V automatic battery chargers
- 12V & 24V gel cell battery banks
- (2) Glendinning shore power cable reels
- (2) 100-amp 3-phase shore power cables
- (2) Kilo-Pak 38 kW generators
- Atlas Energy Systems 40 KVA frequency converter

Mechanical Equipment

- ZF Marine ZF 2550V transmissions
- MarineAir chilled water reverse cycle air conditioning
- Koopnautic 2030 stabilizers
- Quantum QT 30 bow thruster
- Alfa Laval fuel scrubbing centrifuge system
- Racor fuel filters
- Matrix 2400 gpd water maker
- Headhunter Royal Flush marine toilets
- Headhunter Red Fox waste treatment system
- (2) Mach-V fresh water pumps
- (2) Stainless steel hot water heaters
- Nautical Structures EZ-2500 EX davits/crane
- Closed circuit TV system
- Built-in security system
- Built-in oil changing system
- Engine room tool boxes
- Engine room work bench
- Engine room sink
- Constant circulation hot water system
- New built-in custom storage rack system
- Spot Zero water filter system
- UV water purification filter
- CleanAHull Ultrasonic Antifouling System
- The Dry Bilge Machine - Arid Bilge Systems

Deck and Hull

- Novurania 19' tender
- Yamaha 4-stroke 115 hp outboard
- (2) Sea Safe Pro Life 8-man life rafts
- Stidd helm chair
- Kenyon electric grill
- Hoshizaki ice maker
- Sub Zero refrigerator
- Stainless steel sink with hot and cold water
- Aluminum fixed hardtop
- Custom aluminum radar/antenna mast
- Carlisle and Finch remote controlled search light
- Hydraulic powered anchor windlass
- (2) Electric aft deck capstans
- Swim platform
- Swim ladder
- Aft deck H&C shower

- Marquipt sea stair
- Marquipt manual passerelle
- Teak decks
- Awlgrip paint
- Custom Sail shade for upper deck
- Frigibar dock box refrigerator/freezer

Electronics

- (3) Glass Bridge KEP 17" Marine Display LCD monitors w/picture PIP and picture by picture PBP capability
- (2) Glass Bridge KEP 15" Marine Display LCD Sunlight readable monitors w/PIP, PBP capability
- KEP Bridge Display LCD 5.6" diagonal touch-screen
- KEP Levathan Athlon I X2 dual core computer
- WxWork On Water Premium software
- Nobeltec Admiral Plus
- Nobeltec Mega Wide Chart NA P007 & P008
- Extron Matrix switcher, scaler, and rack shelf
- Furuno NavNet 3D Blackbox MFD chart plotter
- Furuno DFF1 sounder
- Furuno 235DHT SmartDucer
- Furuno BBWGPS WAAS receiver
- Furuno BBWX2 satellite weather (Sirius weather and Radio receiver)
- Furuno 6' Open Array
- Furuno NavNet 3D digital UHD radar, 25 kW
- Furuno black box AIS transponder
- Furuno PB150 Ultrasonic Wx Station (wind, barometer, and air temperature device)
- Furuno SC30 satellite compass
- (2) Furuno RD-33 remote displays 4.3" sunlight viewable color LCD
- (2) ICOM M504 VHF radios
- (4) Comrad VHF 8' antenna
- KVH TracVision HD7 Sat antenna
- KVH dome and baseplate
- (4) DirecTV HD receivers with remotes
- Elbex EXS 128 8-channel fixed/motorized camera switcher/controller
- Shakespeare SeaWatch 14" marine TV antenna
- Shakespeare SeaWatch TV/AM/FM splitter
- Digital antenna wireless cell repeater
- Digital 4' dual band cell antenna
- Wave WiFi ethernet converter
- Zyxel 802.11 WLAN access point
- Digital 814 WLW 4' WiFi 5.2 Ghz antenna

- Fusion FM 401 2-Channel 399W Marine amplifier
- (2) Fusion MS-SW10 10" marine subwoofers
- A/V Bluetooth receivers
- Polk Audio TC80i
- Apple TV

Remarks

MARGARITA is a "TEN" in both condition and overall design and engineering. Here is a combination of a great boat at a great price. Seriously for sale.

Исключения

При продаже яхты исключаются личные вещи владельца.

Отказ от ответственности

Компания предоставляет описание судна или яхты добросовестно, но не может гарантировать точность этой информации, а также не ручается за техническое состояние. Покупатель должен проинструктировать своих агентов или оценщиков исследовать представленную информацию более подробно, по собственному желанию. Продажа судна или яхты, изменение цены или снятие с продажи будет происходить без предварительного уведомления.

ФОТОГРАФИИ

Salon



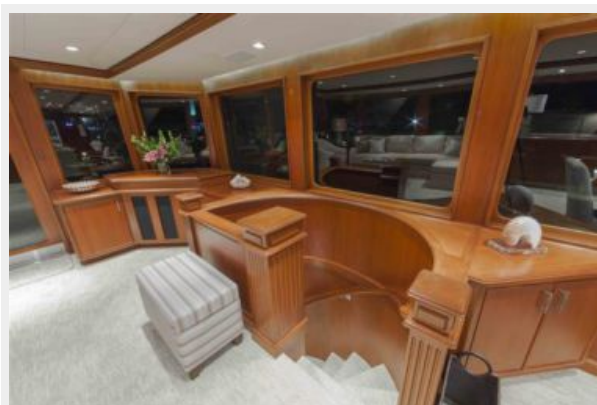
Salon



Salon



Salon



Dining



Dining



Galley



Day Head



Stairs to Companionway



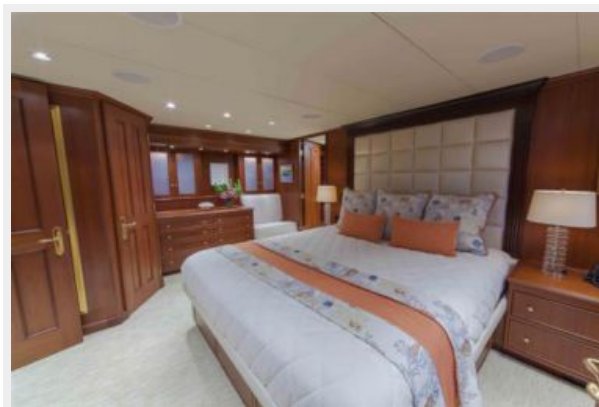
Master Stateroom



Master Stateroom



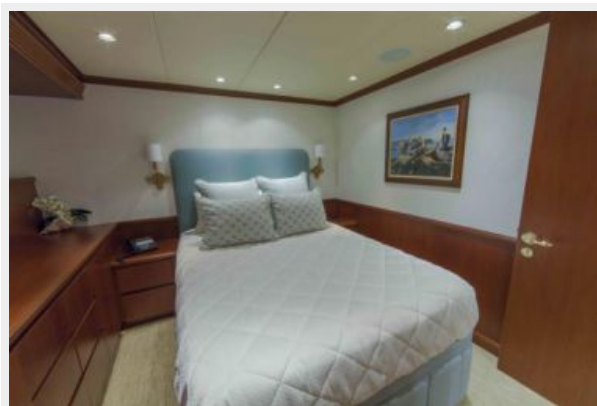
Master Stateroom



Master Bath



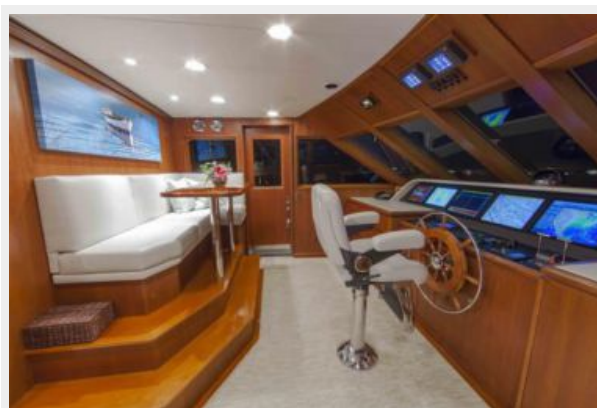
VIP Stateroom



Twin Guest Stateroom



Pilothouse Helm



Pilothouse Seating



Flybridge



Flybridge Helm



Flybridge Seating



Flybridge Seating



Aft Deck



Aft Deck



Engine Room



Engine Room



GA



КОНТАКТЫ

Андрей Шестаков (Andrey Shestakov) – ведущий яхтенный брокер отдела продаж яхт и судов компании Shestakov Yacht Sales Inc. Официальный представитель Shestakov Yacht Sales Inc. для русскоговорящих клиентов в центральном офисе компании в Майами/Форт Лодердейл/Флорида/США.

Контактная информация

Email: andrey@shestakovyachtsales.com

Web: shestakovyachtsales.com

Телефоны

Краснодарский край: **+7(918)465-66-44**

США, Майами, Флорида: **+1(954)274-4435**

Время работы

Понедельник – Суббота: **9:00 - 21:00**
EDT

Воскресенье: **Закрето**

Адрес



Harbour Towne Marina, 850 NE 3rd St,
STE 213, Dania, FL 33004