

MAG III — BENETTI



Builder: BENETTI

Year Built: 2009

Model: Mega Yacht

Price: PRICE ON APPLICATION

Location: United States

LOA: 145' 0" (44.20m)

Beam: 30' 3" (9.22m)

Min Draft: 8' 0" (2.44m)

Max Draft: 9' 0" (2.74m)

Cruise Speed: 12 Kts. (14 MPH)

Max Speed: 15 Kts. (17 MPH)

Our experienced yacht broker, Andrey Shestakov, will help you choose and buy a yacht that best suits your needs **MAG III — BENETTI** from our catalogue. Presently, at Shestakov Yacht Sales Inc., we have a wide variety of yachts available on our sale's list. We also work in close contact with all the big yacht manufacturers from all over the world.

If you would like to buy a yacht **MAG III — BENETTI** or would like help answering any questions concerning purchasing, selling or chartering a yacht, please call **+1(954)274-4435**

TABLE OF CONTENTS

TABLE OF CONTENTS	2
SPECIFICATIONS	3
Overview	3
Basic Information	3
Dimensions	3
Speed, Capacities and Weight	3
Accommodations	4
Hull and Deck Information	4
Engine Information	4
DETAILED INFORMATION	5
Full Specifications	5
2015 Refit	11
Exclusions	13
Disclaimer	13
PHOTOS	14
CONTACTS	24
Contact details	24
Telephones	24
Office hours	24
Address	24

SPECIFICATIONS

Overview

Launched in 2010, MAG III recently completed an extensive cosmetic, mechanical and AV upgrade. MAG III has the most advanced AV system of any yacht under 100 Meters. See full specifications for a complete list of upgrades.

Basic Information

Category: Mega Yacht

Model Year: 2009

Year Built: 2009

Refit Year: 2015

Country: United States

Fly Bridge: Yes

Dimensions

LOA: 145' 0" (44.20m)

Beam: 30' 3" (9.22m)

Min Draft: 8' 0" (2.44m)

Max Draft: 9' 0" (2.74m)

Clearance: 52' 0" (15.85m)

Speed, Capacities and Weight

Cruise Speed: 12 Kts. (14 MPH)

Cruise Speed RPM: 1400 Kts.

Cruise Speed Range: 4000

Max Speed: 15 Kts. (17 MPH)

Max Speed RPM: 1600 Kts.

Displacement: 780000 Pounds

Gross Tonnage: 443 Pounds

Accommodations

Total Cabins: 5

Sleeps: 12

Crew Berths: 9

Hull and Deck Information

Hull Material: Fiberglass

Exterior Designer: Stefano Righini Design

Engine Information

Engines: 2

Manufacturer: Caterpillar

Model: Cat 3508 B

Engine Type: Inboard

Fuel Type: Diesel

DETAILED INFORMATION

Full Specifications

Machinery

Engines: 2 x Cat 3508 B 1300 hp (970kW)

Engine Hours: PORT: 2736 STB:2736(3000 hr service completed on both October 2015)

Gearboxes for Main Engines: ZF w 4610 Ratio: 1.4062

Drive: Fixed screw propellers, 5 blade

Speed

Maximum: 15 kts

Cruising: 12 kts

Economical: 11 kts

Generators & Electricity

Output: 380V, 3 phase/50Hz

Generators: 2 x Northern Lights 115 kW each

Generator Hours: PORT: 7262 STB: 7493(7200 service completed on both)

Generator Fuel Consumption: 20 Liters per hour

Shore Power Converter: ATLAS 75 KVA, 114 A for 50/60Hz x 2

Other Machinery

Water makers: 2 x Idromar MC8, capacity 7,600 liters x 2

Trim Tabs/Stabilizers: Zero Speed VT Naiad NK520

Bow Thruster: Naiad VT75 – 77kW

Steering System: BCS Steer2000 + Sperry Marine Navipilot 4000

Fuel Separator & Filtration: Alfa laval MAB 103B-24, Racor 2nd 79/1000

Sewage System: Hamann 1m3/mini mirway frame

Fresh Water Capacity: 10,000 liters / 2,642 gallons

Bilge Water Filtration: DV2 250 FSU "oilchief"

Lube Oil Capacity: 796 Liters

Waste Oil Capacity: 71.9 Liters

Underwater Lights: 8 x Cantalupi LED lights

Arid Bilge System

Water Softener

Communication Systems

SATcom: Furuno Felcom; Inmarsat Mini M Nera, VSAT

Telephone System: Furuno 8800 Duplex

VHF: 4 x Tellular; Bridge Console, 2 x Handheld FM 3000

Telefax: Panasonic Digital

Intercom: GSP phone

Internal: Panasonic TDA 100 AP

Navigation Systems

Radars: 2 x Furuno FAR2117 Band Marine Radar 65nm range

Gyrocompass: Plath Navigator MK2

Magnetic Compass: Plath Navigator MK2 and Plath Jupiter overhead

Auto Pilot: Plath Navipilot 4000

Depth Sounder: GD1920 CBB + EIR 6/10

Weather Fax: Navtex Furuno NX 700P and

GPS: Furuno GP-150 with DGPS

Ships Computer: Dell/Panasonic

Wind/Speed Log: Furuno DS 80

Navtex: Furuno NX-700

Entertainment System

Brand new Audio and Video entertainment systems featuring a multitude of New TV's, US and LA Digital Receivers, state of the art sound systems, Creston and Lutron Controllers for full lighting and video control complimented by a high-end Vsat.

Crestron Controllers: 11

Kaleidescape Players: 13

TV's: 11

Amplifiers: 11

DVD Players: 10

Autonomic Audio Server (MMS-5A):1

Furman: 1

Creston Infrastructure (Switch Processor (1), Expansion switcher (2), Advanced control processor (1))

High Definition Digital Media Distribution: 1

KVH Tracvision controllers: 2

Sailor 9000 Vsat: 1

Pixelator Enttec: 1

Panasonic Camera surveillance system: 1

DELL PC Server: 1

Main Galley Equipment

Cooking Equipment: Gaggenau Hausgerate 400 km range, Miele 60 cm Masterchef Marine oven, Wolf IIG15/S Grill Module, Wolf ICBCT36IU Induction Cook top, Miele microwave

Refrigeration/Freezer: Frigomar

Dishwasher: Miele

Exhaust hood over range Gaggenau Hausgerate, Double stainless steel sink, garbage macerator, drawers for cutlery with division for 12 people service, dumb waiter connected with the upper deck and sun deck

Additional Galley Equipment

Cooking Equipment: Deep fryer, bread maker, vacuum seal machine

Main Salon Bar & Main Aft Deck

Refrigeration: Isotherm

Icemaker: 2 x Hoshizaki

Stainless steel sink plus faucet

Main Stew Pantry

Miele Coffee Machine

Refrigeration: Subzero Fridge

Icemaker: Large Ice-o-matic

Upper Stew Pantry

Cooking Equipment: Miele Microwave

Refrigeration: 48 bottle wine fridge

Sky Lounge Bar

Refrigeration: Isotherm

Icemaker: Ice-o-matic

Sink plus stainless steel faucet

Sun Deck Area

Cooking Equipment: Creativ-Design Schachi Tepinyaki Hot Plate

Refrigeration: Isotherm

Icemaker: Hoshizaki

Stainless steel sink plus faucet

Crew Galley/Mess Equipment

Cooking Equipment: Miele 60cm microwave

Refrigeration: Miele

Lower Tunnel Area

Refrigeration: Kenmore, Magic Chef

Garage

Refrigeration: Multistar

2 x Sharp Washer/Dryer

Laundry Equipment

Main Laundry Equipment: 2 x Miele Washing Machine, 2 x Miele Dryer

Master

Refrigeration: Ecofridge

Tenders & Toys

Tenders: 17' Novurania Equator 540 LP Volvo 1B 190hp

Dive Gear: 4 sets, 12 tanks,

Dive Compressor: Maxsea

Recreation: 2 x Yamaha GP 1300hp Wave runners

3 x Seadoo underwater scooters

4 x Standup Paddleboards

1 x Surfboard

2 x Water-skis + Single Water-ski

Various beach set up equipment including 3 x Ezy Up tents, chairs, 2 x gas bbq

Poseidon yacht slide

Deck Equipment

Anchor Windlass: 380V AC 3 phase

Aft Warping Capstans: 2 on the aft deck

Anchors: 2 x high holding power

Anchor Chain: Galvanized steel, Posidonia

Boat Crane and Davits: Manual boom for rescue boat

Passerelle: Smeid Telescopic Hydraulic Retractable

Accommodation Ladder: Marquipt manual

Swim Platform: Removable stainless steel hand rails

Outside Decks: Main deck, upper deck and sun deck planked with teak

External stairs, swim platform and transom door planked in with teak, sun shades on sun deck and bow

Gym Equipment Technogym (similar to a Bowflex), True Treadmill, Weight Bench, weights, mats, ball and a massage table

Security, Fire Fighting & Safety Equipment

Security Equipment

CCTV System: Panasonic matrix switcher, cameras and controls

Cameras: 1 x Crew, aft deck, engine room, bridge, sun deck, garage, side decks port & stb

Monitors: 1 x Crew, Bridge

Fire Fighting Equipment

Fire Control System: 2 x 380V engine room – self priming

12 x Seawater firefighting stations throughout the yacht

Fire Extinguishers: Portable + Flexifog misting system

Alarms: Smoke, heat; “Autrosafe” fire detection system

Safety Equipment

Life Rafts: 4 x Upper deck + Zodiac Rescue Tender/5hp

Life Rings: 2 x Main deck, 2 + smoke/strobe bridge deck

Life Jackets: 32

GPIRB: ACR 406 MH2 (X1)

Flares: Ocean going capacity

Medical Equipment: Medaire

Accommodation

1 x Master Stateroom

4 x Staterooms – (one state room is currently a gym, all of the woodwork to conver back to a stateroom is in storage) Guest Elevator

2015 Refit

New interior soft goods

New wood work from Benetti

Redesign of the sky lounge with an all new bar in a unique location

Main salon and old dining room became large salon with new full bar and library with pop out TV.

Closed the stewardess pantry off from the main salon & added storage

Increased ice production by 600 lbs, all bars now have ice, fridge, water and sinks,

New interior lighting

Installed an independent RO water system to the water system, added additional UV lights to the system to kill any bacteria on the way in and out of the water tanks.

New electronics and New wiring for the electronics.

Satellites for internet and HDTV, New Samsung HD TV's, New phone systems with 3 internet phone lines, 3 cellular lines, 2 iridium phone lines, 2 iridium go units

New A/C in Master and Skylounge, all other A/C units overhauled

Refurbished Novurania tender

New exterior soft goods

New aft deck exterior table

All exterior furniture refinished and or replaced

Stabilizers serviced, seals, bearings and hoses replaced

Generators overhauled

Water maker rebuilt with new membranes

Water tanks repainted

Washer and dryers added in the garage

Repainted the bilges

Upgraded to Arid Dry bilge system

Repainted all lockers

Gel Coat touched up

Repainted the bottom and boot stripes

Replaced teak decking as needed

Replaced all black caulking in teak decking

Concluded the 5 year ABS survey

Added line cutters to the shafts,

Multicolor Underwater LED lights which match the multicolor lights in the interior bars

Refit of crew area including crew bathrooms & showers, new flooring to sub floor in crew area and all soft goods.

Replaced Bimini's with Sails

Logs are all up to date and complete

Exclusions

Owner's personal belongings.

Disclaimer

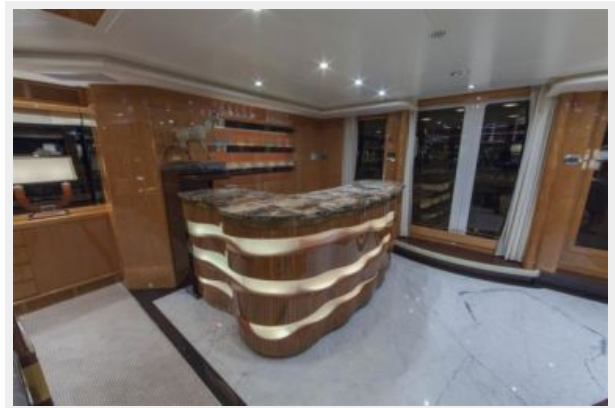
The Company offers the details of this vessel or yacht in good faith but cannot guarantee or warrant the accuracy of this information nor warrant the condition of the vessel. A buyer should instruct his representatives, agents, or his surveyors, to investigate such details as the buyer desires validated. This vessel or yacht is offered subject to prior sale, price change, or withdrawal without notice.

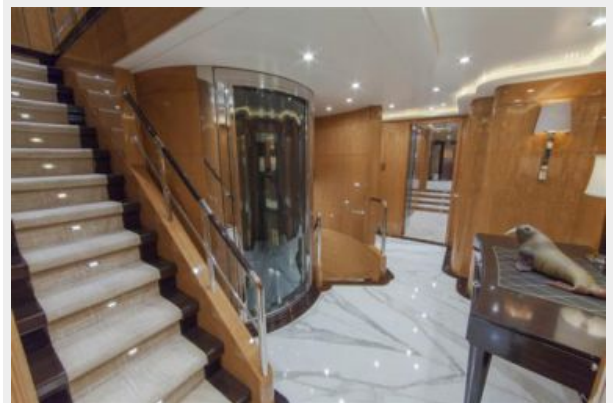
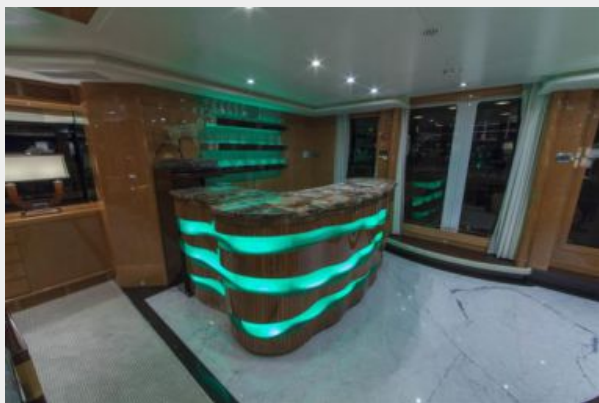
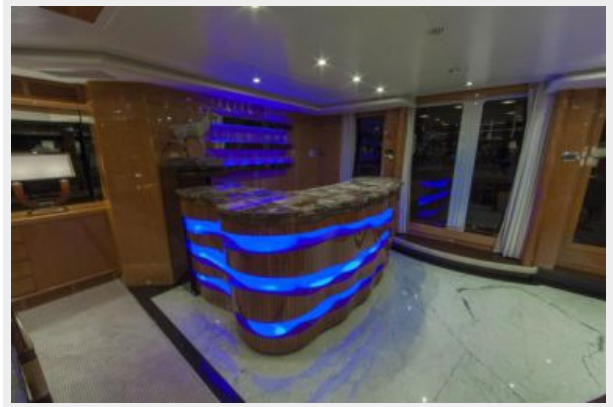
PHOTOS





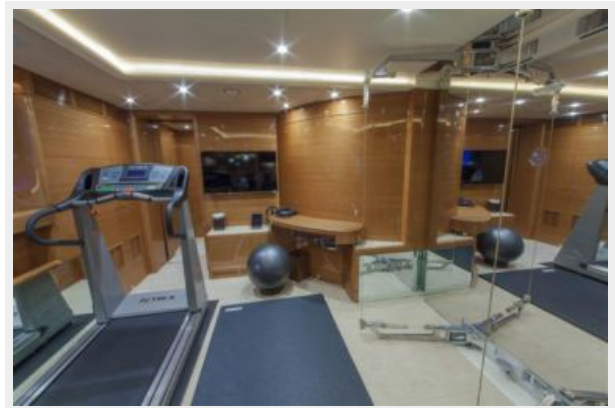
















CONTACTS

Andrey Shestakov, leading yacht broker of the sales department of Shestakov Yacht Sales Inc. Shestakov Yacht Sales Inc., the official representative of the Miami/Fort Lauderdale FL headquarters.

Contact details

Email: andrey@shestakovyachtsales.com

Web: shestakovyachtsales.com/en/

Telephones

USA: +1(954)274-4435

Office hours

Monday – Saturday: **9:00 - 21:00** EDT

Sunday: **closed**

Address



Harbour Towne Marina, 850 NE 3rd St,
STE 213, Dania, FL 33004