

BILLBOARD — VIKING



Судостроитель: VIKING

Год постройки: 2014

Модель: Катер для спортивной рыбалки

Цена: ЦЕНА ЯХТЫ ПО ЗАПРОСУ

Местонахождение: United States

Длина общая: 66' 0" (20.12m)

Ширина: 19' 1" (5.82m)

Макс. осадка: 5' 5" (1.65m)

Крейс. скорость: 34 Kts. (39 MPH)

Макс. скорость: 41 Kts. (47 MPH)

Купить **Billboard — VIKING** а также выбрать подходящую вам яхту из нашего каталога яхт вам поможет опытный яхтенный брокер Андрей Шестаков. На сегодняшний день компания **Shestakov Yacht Sales Inc.** имеет большое количество яхт в собственном списке продаж, а также тесно сотрудничает со всеми крупными яхтенными производителями по всему миру.

Для того чтобы купить яхту **Billboard — VIKING** а также проконсультироваться по любому вопросу связанному с покупкой, продажей, чартером яхт позвоните по телефону **+7(918)465-66-44**.

ОГЛАВЛЕНИЕ

ОГЛАВЛЕНИЕ	2
ХАРАКТЕРИСТИКИ	5
Обзор	5
Основная информация	6
Размеры	6
Скорость, вместимость и масса	6
Размещение	6
Корпус и палуба	6
Информация о двигателе	7
ПОДРОБНОЕ ОПИСАНИЕ	8
Salon/Dinette	8
Decor	8
Galley	9
Companionway	9
Salon Day Head	9
Master Stateroom	9
Master Stateroom Head	10
Guest Stateroom (Forward)	10
Guest Head (Starboard)	10
Guest Stateroom (Starboard)	10
Crew Stateroom	11
Flybridge	11
Crew Head	11
Deck Equipment/Hull	12
Mechanical Equipment and Engine Room	12
Mechanical/Electrical	13
Cockpit	13
Atlantic Marine Electronics Package	14

Engines	17
Tankage	17
Disclaimer	17
Исключения	17
Отказ от ответственности	17
ФОТОГРАФИИ	19
Galley	19
Salon	19
Master Stateroom	19
Bridge	19
Salon	19
Salon pop-up TV	19
Dinette	20
Galley	20
Galley	20
Master Stateroom	20
Master Head	20
Forward V-Berth	20
Forward V-Berth	21
Guest Stateroom	21
Crew Quarters	21
Day Head	21
Forward Head	22
Guest Head	22
Crew Head	22
Companionway	22
Washer/Dryer	23
Pantry	23
Pantry	23

Helm	23
Helm	23
Helm Chairs	23
Bridge	24
Bow	24
Engine Room	24
Side View	24
Aft View	24
КОНТАКТЫ	25
Контактная информация	25
Телефоны	25
Время работы	25
Адрес	25

ХАРАКТЕРИСТИКИ

Обзор

"Billboard" is new to the market and built to impress. She boasts a striking Haze Grey Imron painted hull, Seakeeper Gyro stabilizer, Release Trillion series helm seats and fighting chair and more! She is custom from bow to stern with the proper equipment for the serious fisherman.

"Billboard" is seriously for sale. Call now for your private showing appointment.

"Billboard's" 1925HP CATS have just been serviced and are ready to go. Transferable Passport Extended warranty on both generators & navigational electronics is good until 6/22/18. This stunning boat is not to be missed.

Vessel Walkthrough

"Billboard" is one of the most unique 66 Vikings available on the market today. Completely loaded with options and upgrades – including the highly desirable 26,000 series Seakeeper. This 66 boasts a 4 stateroom, queen forward VIP layout, all with private heads and showers, and the desirable salon day head, for a total of 5 heads.

As you step into cockpit, the Custom Release Trillion series fighting chair and the mezzanine cushions with their two-tone colors in outdoor Buckskin will catch your eye. Entering the salon, you will notice a custom larger depth Dewberry style sofa to starboard with arm compartments and easy access storage below. The salon flows seamlessly into the galley/bar stool arrangement, with a virtually unnoticeable day head to port. A curved teak credenza with a flat screen TV is concealed on a high-low mechanism. Another TV, which is mounted forward starboard side, is angled for all guests to watch movies or sporting events.

Enter the galley just forward via outboard or inboard to the convenient easy flow galley island. The island provides ample room for 3 SubZero refrigeration units (two refrigerators and 1 freezer, each with 2 drawers). Beautiful granite countertops and a custom lighted Channell Glass backsplash round out this highly functional yet stylish galley area.

Bill Board features a generous master stateroom with an athwart ship queen and two large closets. The forward VIP Stateroom has an island queen berth with storage underneath. Forward and Aft berths each have bunks and all staterooms have a private head.

The Generous flybridge area has 3 Release Trillion series helm chairs in beautiful sculpted teak perched behind the island style helm station. There is additional seating in front and to each side of the helm area for guests as well as a large drop freezer forward. The under-side of the hard top was custom painted to match the hull but in a matte finish to reduce glare. An incredible electronics suite finishes off the helm area with all state of the art electronics gear.

Основная информация

Тип судна: Катер для спортивной рыбалки

Подкатегория: Convertible

Модельный год: 2014

Год постройки: 2014

Страна: United States

Размеры

Длина общая: 66' 0" (20.12m)

Ширина: 19' 1" (5.82m)

Макс. осадка: 5' 5" (1.65m)

Длина привального бруса: 66' 0" (20.12m)

Скорость, вместимость и масса

Крейс. скорость: 34 Kts. (39 MPH)

Макс. скорость: 41 Kts. (47 MPH)

Вместимость воды: 340 Gallons

Вместимость сточного бака: 210 Gallons

Объем топливного бака: 2065 Gallons

Размещение

Всего кают: 4

Всего ком. состава: 5

Корпус и палуба

Материал корпуса: Fiberglass

Информация о двигателе

Двигатели: 2

Производитель: Caterpillar

Модель: c-32a

Тип двигателя: Inboard

Тип топлива: Diesel

ПОДРОБНОЕ ОПИСАНИЕ

Salon/Dinette

- Salon door type catches on stateroom doors
- Bose V35 entertainment system with Blu-Ray
- Electric door opener for salon door
- Overhead teak handrail
- Dimmers for quartz lights
- Teak wire box
- Custom Amtico flooring at salon entranceway (Herringbone in 7070 Rosewood)
- Teak trim where Amtico floor meets carpet
- Teak valances
- 40" flat screen TV with electric lift in starboard counter
- Teak strips in salon headliner
- Dimmer on overhead LED lights
- TV over dinette
- Moppa Burl dinette table
- Moppa Burl cocktail table - rectangular
- Clear carpet runners for salon, stairs, companionway (New Nov 2014)

Decor

- Prestige décor
- Accessory kit
- Sofa upgraded style, Dewberry style sofa with storage arm at door in Ultraleather Brisa Distressed Saddle, seats in Ultraleather Brisa Distressed Bison
- Appliqued bedspread and shams in master stateroom
- Wrapped hatch carpet
- Custom wallpaper
- Custom headliner material throughout boat - Desert Sand Symphony
- Brushed nickel cover plates for switches and receptacles throughout
- Satin nickel interior light trim throughout
- LED interior lights throughout
- Mezzanine and flybridge cushions in Ultraleather Brisa Distressed Outdoor Buckskin
- Custom toss pillows for salon and master stateroom
- Upgraded helm chair cushions to Ultraleather Buckskin
- Barstools with backs in Ultraleather Brisa Distressed Bison
- Carpet "fabrica surge"
- Stile and rail doors throughout
- Mezzanine seating: bolsters, top and leg in Ultraleather Brisa Distressed Outdoor Buckskin

- Mezzanine: custom drink bolster
- Bridge seating: helm chairs and seating in Ultraleather Brisa Distressed Outdoor Buckskin
- Custom pillow shams

Galley

- 110V outlet next to switch on bottom of upper cabinet above sink
- Stainless steel undermount sink
- Custom Amtico flooring
- Satin nickel faucet
- Recessed cook-top
- Clear ice maker
- Compactor with teak panel on face
- Cooktop with lids for granite in flush mount
- Granite countertop
- Custom Galley Backsplash (Chris Channel)

Companionway

- Teak Strips between wall panels
- Additional storage forward of dinette accessed from companionway
- Awlgrip bilge areas with access hatches
- Vertical teak strips in companionway

Salon Day Head

- Custom wallpaper - Coconut Lumi Milk
- Mirrored ceiling
- Brushed nickel towel bars and rings
- Satin nickel faucet
- Granite vanity top - Sequoia leather finish with ogee edge

Master Stateroom

- Prestige decor
- Accessory kit
- Water delivery kit with tool set
- Hardwire night table lamps
- Queen mattress

- Teak end table tops
- 32" TV
- Custom Amtico flooring
- Custom full height headboard
- Additional telephone outlet
- Custom wallpaper (Nagini)
- 12V CD stereo and DVD player

Master Stateroom Head

- Mirrored ceiling
- Custom wallpaper - Coconut Lumi Milk
- Lower vanity with teak face
- Mirror around upper vanity
- Custom Amitco flooring
- Satin nickel on shower fixtures
- Satin nickel on faucet
- Brushed nickel on towel bars and rings
- Granite vanity top
- Custom vanity top (Sequoia Leather)

Guest Stateroom (Forward)

- Custom wallpaper (Nagini)
- 19" HD flat screen TV
- Upgraded island queen mattress

Guest Head (Starboard)

- Teak face on lower vanity
- Chrome shower door
- Satin nickel shower fixtures
- Brushed nickel on towel bars and rings
- Satin nickel faucet
- Custom granite vanity top (Sequoia Leather)

Guest Stateroom (Starboard)

- Custom wallpaper (Nagini)
- Upgraded mattresses for both bunks

- Locker top with teak

Crew Stateroom

- Custom wallpaper (Nagini)
- Upgraded mattresses on both bunks
- Dimmer on overhead LED lights
- Teak on locker top
- Teak face on lower vanity
- Mirror around upper vanity
- Access door to engine room
- 19" flat screen TV
- Mirror ceiling

Flybridge

- Electronic trolling valves
- Recessed electronic boxes
- Bridge freezer box
- Removable jump seat backrest
- Refrigerated drink box
- Caterpillar single lever controls for pod
- Hatch over bridge ladder opening-hinged inboard
- Push button catches for electronic boxes
- Fresh water outlet
- Bridge without exposed fasteners
- VHF radio ICOM-604
- Release teak helm pod
- Single lever controls handles with bow thruster button in handles
- Custom helm chairs
- Handrail on side of helm console above helm access door
- Cushions in Ultraleather Brisa Distressed Outdoor Buckskin
- Release Marine Trillion helm chairs
- Painted underside of Hardtop to match hull color (matte finish)

Crew Head

- Teak face on lower vanity
- Mirror around upper vanity
- Custom Amtico flooring (Herringbone in 7070 Rosewood)
- Chrome shower door

- Satin nickel shower fixtures
- Brushed nickel towel bars and rings
- Satin nickel faucet
- Granite vanity top

Deck Equipment/Hull

- Salon forward window mask
- DC bow thruster
- Custom hullpaint – Dupont Medium Grey
- Bottom paint – Black Micron CSC
- Boot stripe
- Bow cleats - Fore & aft
- Bilge - Awlgrip forward bilge
- Bilge - Awlgrip anchor locker
- Bilge - Magnetic switches for all bilge lights
- Oval exhaust outlets (linear exhaust)
- Hull - Fiberglass side thru-hulls
- Hull - Prop pockets to reduce draft
- Hull - Additional fuel tank forward for a total of 3 tanks
- Deck - Fresh water wash-down at bow inside anchor locker
- Deck - Rub rail white
- Fender Tracks under Rub rail
- Installed Lewmar V4 24 VDC windlass - extended anchor fairlead
- Deck - Anchor bracket in anchor locker
- Deck - Recessed trim tab covers
- Deck - Stainless steel gas springs for anchor locker hatch
- Deck - Side mounted hand rails that follow top of salon window
- Deck - 2 aft hatches on foredeck
- Deck - Extended handrails above salon windows forward (48" wrapping around house)
- Deck - 36" handrail under forward window mask below where upper handrail stops
- Deck - White rope lighting under bridge forward overhang

Mechanical Equipment and Engine Room

- Caterpillar C-32A – 1925 HP
- Generator gas-water separator
- Additional 21.5 kW generator
- Eskimo ice chipper plumbed to fish box
- Blue Water desalination water maker Model Legend 1500
- Dual power steering pumps in place of standard single on port engine
- Two tool boxes (white)

- Awlgrip brass thru-hulls and sea strainers
- Fuel filters snow white
- Run line from oil changes system to cockpit dockside box
- Clear acrylic shaft log access covers
- Tee in dockside water manifold to fill water tank from cockpit
- Deck fill for fresh water tank

Mechanical/Electrical

- 110V outlet on aft bulkhead at entranceway
- Bilge pumps with clean out pumps in keel area linked into monitoring system
- Centralized seawater system
- "Delta T" engine room ventilation system with thermostatically controlled supply and discharge fans
- Remote mounted engine start and stop switches for fire suppression system
- Freshwater supply in engine room for general maintenance and cleaning
- Fuel priming pumps for main engines
- Multi stage speed 110V AC freshwater system
- Oil changing system
- Racor fuel/water separator filters for main engines
- 24V DC ship's service throughout
- Propspeed to props
- 240/120V AC power supply
- 110V outlet in engine room on aft bulkhead
- Batteries, (2) independent 24V banks mounted in fiberglass storage boxes
- Battery chargers, (2) with thermal cutoff
- Battery parallel system for main engines and generator start
- Glendinning cablemaster (2) 50/220V AC with 3 wire grounded cord
- Master electrical control provided via OctoPlex power distribution system
- Voltage stabilizer transformers for consistent, clean voltage

Cockpit

- Refrigerated cockpit step box
- Transom coaming with gate and with transom fish box
- Refrigerated starboard mezzanine undermounted step box
- Mezzanine cockpit
- Cruisair "Cool Breeze" mezzanine air system
- Freezer storage in mezzanine seat
- Transom swim steps
- Custom Release Trillion fighting chair
- Awlgrip lazarette

- Y-valve for fresh and salt water washdowns
- Eskimo ice plumbed to fishbox
- Storage lockers under port and starboard coamings
- Split lid for fish box
- M26,000 Seakeeper Gyro

Atlantic Marine Electronics Package

RADAR

- 1 plotter Furuno Navnet 3d mfdbb processor
- 1 radar Furuno Navnet 3d drs25a 25kw 96nm less array ultra high definition radar
- 1 radar array 6' Furuno #xn13a/6
- 1 GPS antenna Furuno gp330b
- 2 monitor 17" LED glass bridge marine KEP
- 3 VGA cable 10' m-m Extron 26-238-07
- 2 DVI extender Atlona at-dvi15srs
- 1 two output DVI distribution amplifier ex

PLOTTER

- 1 Kepmpc, navigation PC
- 1 software, Nobeltec tz trident w/radar & sounder options
- 1 trackball, 50mm black, KEP ktbs50f2
- 1 USB extender xmit Extron 60-871-12
- 1 USB extender rx Extron 60-871-22
- 1 monitor 17" LED glass bridge marine KEP
- 3 VGA cable 10' m-m Extron 26-238-07
- 1 gyration go 2.4 wireless mouse & kybd combo gp6105ckm
- 1 distribution amp Extron 4 port dvi 60-92
- 2 DVI extender Atlona at-dvi15srs
- 1 adapter HDMI m to DVI f atlona at14050

PLOTTER2

- 1 Chartplotter Garmin GPS Map 6008 mounted in drop down box

NAVNET PERIPHERALS

- 1 ethernet hub Furuno Navnet 3d hub101
- 1 LAN cable Furuno 10m rj45-rj45 for navne
- 1 LAN cable Furuno 5m rj45 #000-167-176 rj45xrj45 4p

NETWORK

- 1 converter DC/DC puls 96w 18-32vdc in VDC
- 4 NMEA connector maretron fa-cm-st male
- 4 NMEA connector maretron fa-cf-st female
- 40 n2k mid bulk cable gray maretron dg1
- 2 n2k micro termination resistor male
- 8 micro tee male/female/female maretron cm
- 2 n2k mid double-ended cordset 1m gray
- 1 NMEA multiport box maretron cm-cf-4
- 1 adapter cable Simrad Simnet to NMEA 2000
- 3 n2k mid double-ended cordset 2m gray
- 3 n2k mid double-ended cordset 3m gray
- 1 micro bulkhead feed thru mhf-cm

SOUNDER

- 1 sounder, Navnet 3d dff3 1-3kw
- 1 transducer Airmar cm599lh chirp

DIGITAL DEPTH/TEMP

- Display, Furuno rd33 data organizer (Viking standard equipment)
- Xdcr hi-prec.tmp/2 Furuno #235dht-lmse (Viking standard equipment)

AUTOPILOT

- 1 autopilot, Garmin ghp20, viper
- 1 autopilot kit Garmin

VHF

- VHF radio ICOM ic-m604 black (Viking standard equipment)
- 1 VHF radio ICOM ic-m604 black
- 2 VHF flush mount f/502,602,802 lcom #mb-75
- 2 antenna phase III 6018 18' VHF
- 2 antenna mount Rupp AME tower/hardtop pak
- 2 VHF speaker external mb-41 black mount overhead in teaser reel box
- 1 VHF command mic ICOM hm-162 b black salon
- 1 VHF extension command mic lcom opc-1541

AIS

- 1 AIS Furuno fa50 black box 12/24vdc
- 1 AIS antenna splitter si-tex mda-3 mda-3

STEREO

- 1 stereo 12v fusion ms-ip700

- 1 tuner fusion ms-acsxv-only sirius/xm
- 1 SAT radio xm satellite radio splitter package, for 4 receivers
- 2 amplifier JL audio mhd600/4 4-chan
- 2 speaker JL audio 7.7 coaxial m770-ccx mounted on bridge
- 1 speaker JL audio 7.7 coaxial m770-ccx removable bow speaker set up
- 1 stereo speaker JL audio 7.7" m770-tcs-w installed in custom box under cockpit
- 2 JL Audio Audio 10" subwoofer in cockpit
- 2 JL Audio 10" subwoofer on flybridge

SATCOM

- 1 prewire for future installation of kvh v3 system

WEATHER

- 1 Sirius SAT weather module bbwx2 (requires subscription)
- 1 SAT radio Sirius antenna shake sra-40

CAMERA

- 3 camera mini ball with ir gost pm-mini er cameras
- 1 camera switcher color quad with zoom app mount under helm by doors
- 1 amp MDA 3v dual comp vid amp 2 in 3 out

SPOTLIGHT

- 1 spotlight acr rcl100 24v

SATTV

- 1 SATTV KVH tracvision hd7 w/triamericas I
- 2 DSS receiver direct TV hr24 hd/dvr salon and msr
- 2 DSS receiver direct TV hi-def h24 kvh 19
- 5 SATTV remote control kit rf for kvh HDTV
- 1 mulitswitch 3x4 eagle aspen s-2140-ce+ w/power supply
- 1 ups 650va apc be650g keeps power to system during changeover from dockside power to generators
- 1 splitter snapav HDMI-1x2 b-200-hdsplitter-1x2
- Split salon receiver to dinette TV and Bose

SALON

- 1 remote control urc mx-5000
- 1 rf remote system, urc msc400
- 1 sensor emitter kit, urc msc400
- 1 IPod dock, urc psx-2 remote control psx-2
- 1 router d-link dir-615 provides 2-way communication between psx-2 and mx-5000

- 1 converter component video to svideo/comp
- 2 wireless speaker, outcast jr ocj410
- 1 universal audiocast transmitter uat250us for outcast wireless speakers
- 2 camera mount suction cup bogen 3289

OTHERS

- (5) custom underwater lights

NET

- Chart, c-map, Gulf of Mexico nn3d, wm74, mm3-vna-023

Engines

Engine 1: Engine Brand: Caterpillar Engine Model: C-32A Engine Type: Inboard Engine/Fuel Type: Diesel Engine(s) Total Power: 1925 HP Engine 2: Engine Brand: Caterpillar Engine Model: C-32A Engine Type: Inboard Engine/Fuel Type: Diesel Engine(s) Total Power: 1925 HP

Tankage

Fresh Water Tanks: (340 Gallons) Fuel Tanks: (2065 Gallons) Holding Tanks: (210 Gallons)

Disclaimer

The Company offers the details of this vessel in good faith but cannot guarantee or warrant the accuracy of this information nor warrant the condition of the vessel. A buyer should instruct his agents, or his surveyors, to investigate such details as the buyer desires validated. This vessel is offered subject to prior sale, price change, or withdrawal without notice.

Исключения

При продаже яхты исключаются личные вещи владельца.

Отказ от ответственности

Компания предоставляет описание судна или яхты добросовестно, но не может гарантировать точность этой информации, а также не ручается за техническое состояние. Покупатель должен проинструктировать своих агентов или оценщиков исследовать представленную информацию более подробно, по собственному желанию. Продажа судна или яхты, изменение цены или снятие с продажи будет происходить без

предварительного уведомления.

ФОТОГРАФИИ

Salon



Galley



Master Stateroom



Bridge



Salon



Salon pop-up TV



Dinette



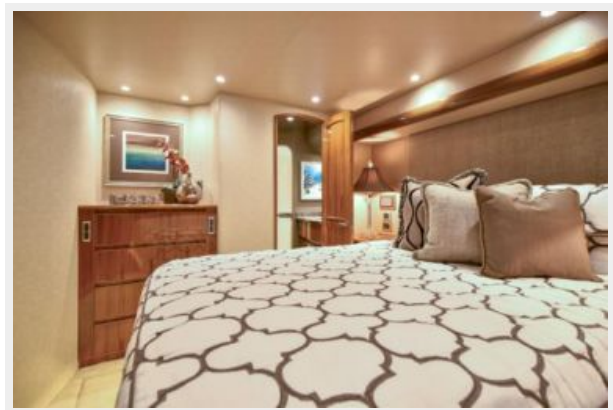
Galley



Galley



Master Stateroom



Master Head



Forward V-Berth



Forward V-Berth



Guest Stateroom



Crew Quarters



Day Head



Forward Head



Guest Head



Crew Head



Companionway



Washer/Dryer



Pantry



Pantry



Helm



Helm



Helm Chairs



Bridge



Bow



Engine Room



Side View



Aft View



КОНТАКТЫ

Андрей Шестаков (Andrey Shestakov) – ведущий яхтенный брокер отдела продаж яхт и судов компании Shestakov Yacht Sales Inc. Официальный представитель Shestakov Yacht Sales Inc. для русскоговорящих клиентов в центральном офисе компании в Майами/Форт Лодердейл/Флорида/США.

Контактная информация

Email: andrey@shestakovyachtsales.com

Web: shestakovyachtsales.com

Телефоны

Краснодарский край: **+7(918)465-66-44**

США, Майами, Флорида: **+1(954)274-4435**

Время работы

Понедельник – Суббота: **9:00 - 21:00**
EDT

Воскресенье: **Закрето**

Адрес



Harbour Towne Marina, 850 NE 3rd St,
STE 213, Dania, FL 33004