

O SEA D — FAIRLINE



Builder: FAIRLINE

Year Built: 2014

Model: Motor Yacht

Price: PRICE ON APPLICATION

Location: United States

LOA: 42' 6" (12.95m)

Beam: 13' 10" (4.22m)

Min Draft: 3' 6" (1.07m)

Cruise Speed: 24 Kts. (28 MPH)

Max Speed: 30 Kts. (35 MPH)

Our experienced yacht broker, Andrey Shestakov, will help you choose and buy a yacht that best suits your needs **O SEA D — FAIRLINE** from our catalogue. Presently, at Shestakov Yacht Sales Inc., we have a wide variety of yachts available on our sale's list. We also work in close contact with all the big yacht manufacturers from all over the world.

If you would like to buy a yacht **O SEA D — FAIRLINE** or would like help answering any questions concerning purchasing, selling or chartering a yacht, please call **+1(954)274-4435**

TABLE OF CONTENTS

TABLE OF CONTENTS	2
SPECIFICATIONS	3
Overview	3
Basic Information	3
Dimensions	3
Speed, Capacities and Weight	3
Accommodations	4
Hull and Deck Information	4
Engine Information	4
DETAILED INFORMATION	5
Main Saloon	5
Deck	5
Fly Bridge and Main Helm	6
Accommodations	7
Engines and Stern Gear	8
Electrical Systems	9
Tankage	9
Disclaimer	10
Exclusions	10
Disclaimer	10
PHOTOS	11
CONTACTS	29
Contact details	29
Telephones	29
Office hours	29
Address	29

SPECIFICATIONS

Overview

This yacht proved to be one of the most ambitious challenges. How can the identity of the most inspiring and exclusive Fairline models translate into a smaller yacht?

It was the most wonderful brief for the designers that would require every ounce of their ingenuity and experience. The result is a compact Squadron with the genuine feeling of a much, much larger yacht. Each area has been designed to work in harmony with the next. Your journey through the entire yacht is seamless, with no interruptions. And it is this flow that gives a feeling of a luxurious, open space. The type of freedom you would only expect from a 50+ foot yacht. The large flybridge isn't just for show, every aspect has been carefully considered to create the space for people to move around freely. Yes, we can safely say, it is every inch a Squadron.

Basic Information

Category: Motor Yacht

Sub Category: Cockpit

Model Year: 2014

Year Built: 2014

Country: United States

Vessel Top: Bimini Top

Fly Bridge: Yes

Cockpit: Yes

Dimensions

LOA: 42' 6" (12.95m)

Beam: 13' 10" (4.22m)

Min Draft: 3' 6" (1.07m)

Clearance: 15' 10" (4.83m)

Speed, Capacities and Weight

Cruise Speed: 24 Kts. (28 MPH)

Max Speed: 30 Kts. (35 MPH)

Displacement: 28660.09406 Pounds

Water Capacity: 103 Gallons

Fuel Capacity: 263 Gallons

Accommodations

Total Cabins: 2

Total Berths: 2

Sleeps: 4

Total Heads: 2

Hull and Deck Information

Hull Material: GRP

Deck Material: Teak

Hull Configuration: Deep Vee

Hull Color: White

Hull Designer: Bernard Olesinski

Engine Information

Engines: 2

Manufacturer: CAT

Model: C7

Engine Type: Inboard

Fuel Type: Diesel

DETAILED INFORMATION

Main Saloon

- 19" flatscreen TV with Video iBoat dock
- Aerial and connections for television
- Blinds to side windows
- Curtains to patio door
- Dining table
- First aid kit
- Freestanding sideboard with cocktail cabinet and provision for optional 32" TV
- Full-height standing headroom
- Full length saloon windows
- Halogen ceiling lights
- Handrail with glass partition leading to galley
- Sofa

Deck

- Anchor chain locker
- Anchor winch (electric)
- Anchor winch controls
- Calibrated anchor chain
- Delta anchor 16kg with 45m chain (galvanised)
- Fender set
- Foredeck lockers
- Fuel fillers
- Full set of IMCO navigation lights
- Horn to radar mast
- Hot and cold water transom shower
- Moulded non-slip deck surface
- Recessed self-draining area on foredeck for coachroof sun cushions
- Riding light
- Stainless steel bow, spring and stern cleats
- Stainless steel bow fairlead(s)
- Stainless steel handrails
- Stainless steel pulpit
- Stainless steel stemhead roller
- Swim ladder
- Teak laid bathing platform
- Toughened glass curved windscreen
- Transom gates from cockpit to integral bathing platform

- Water filler(s)
- Windscreen wipers

Fly Bridge and Main Helm

- 12V heavy duty weatherproof socket
- Access hatch
- Bilge pump warning lights and audible alarms
- Bolstered helm seating
- Chaise-longue seat
- Companion seating to helm
- Deck level lighting
- Drinks holders
- Electronic single-lever throttle and gear controls for port and starboard engines
- Ensign and staff
- GRP flybridge table
- Garmin GMI 10 digital multi-function instrument system with colour display
- Helm position indicator
- High speed magnetic compass
- Instrument covers
- Moulded non-slip deck surface
- Remote anchor winch controls
- Remote control searchlight with controls at both helm stations
- Repeat flybridge engine instrumentation, controls and electronics
- Stainless steel handrails
- Teak laid oversize flybridge steps
- Trim tab controls
- VHF radio incorporating intercom
- Wind-deflecting screen with grab rail

Main Helm Position

- 12V socket
- Adjustable/tilt steering wheel
- Bilge pump switches with integral operating warning lights and audible alarms
- Bolstered helm seat
- Control panel for 12V/240V domestic electrical circuits
- Controls for engine bay fire extinguisher system
- Electronic single-lever throttle and gear controls for port and starboard engines
- Fuel gauges
- Full engine instrumentation including; tachometers, temperature gauges, battery condition indicators, audible alarms and engine hour meters
- Garmin GMI 10 digital multi-function instrument system with colour display

- Garmin VHF 300i marine radio
- Helm position indicator
- High speed magnetic compass
- Hydraulic steering
- Opening side window (manual)
- Random teak floor
- Red night-light illumination to helm
- Remote anchor winch controls
- Searchlight controls
- Switches for navigation and riding lights, windscreen wipers and engine bay extractor fans
- Trim tab controls

Accommodations

Master Cabin

- Bedside table
- Drawer(s) under bed
- Full-height standing headroom
- Halogen ceiling lights
- Large hatch with flyscreen and concealed blinds to foredeck
- Lockers (overhead)
- Master cabin skylight
- Mirror
- Opening hull windows with blinds
- Oversized double bed
- Reading lights
- Upholstered bedhead
- Wardrobe(s)

Master En Suite

- 220V/240V shaving point
- Automatic shower tray pump-out system
- Electric silent-flush freshwater toilet
- Extractor fan
- Foundations® vanity unit locker and basin with hot and cold pressurised water
- Full set of bathroom fittings
- Full standing height shower with hinged door
- Halogen ceiling lights
- Mirror
- Opening hull windows with blinds

Starboard Guest Cabin

- Bedside stowage
- Double doors to en suite
- Full length berths x 2 with sliding conversion to double bed
- Full standing height shower with solid teak gratings, seat and hinged door
- Halogen ceiling lights
- Lockers (overhead)
- Mirror
- Opening hull windows with blinds
- Reading lights
- Wardrobe(s)

Guest Cabin En Suite

- 220V/240V shaving point
- Automatic shower tray pump-out system
- Day Access
- Electric silent-flush freshwater toilet
- Extractor fan
- Foundations® vanity unit locker and basin with hot and cold pressurised water
- Full set of bathroom fittings
- Full standing height shower with solid teak gratings, seat and hinged door
- Mirror
- Opening hull windows with blinds

Engines and Stern Gear

- Access through cockpit hatch
- Aerodynamically designed engine air intakes
- Automatic bilge pumps for forward bilge, engine bay and rudder bay with manual 'on' override
- Automatic engine bay fire extinguisher system with warnings at both helms
- Balanced rudders
- Cathodic protection
- Dripless shaft seals
- Electric engine bay fan(s)
- Electro-hydraulic trim tabs with cathodic protection
- Engine bay lights
- Engine room soundproofing
- Exhaust overheat warning system
- High capacity emergency manual bilge pump system with changeover valves
- Manganese bronze 'P' brackets
- Manganese bronze propellers contra-rotating

- Sea cocks on all inlets/outlets below waterline
- Stainless steel alloy shafts
- Water cooled engine exhausts with silencers and side outlets

Electrical Systems

- All 240V, 24V and 12V circuits (where applicable) protected by circuit breakers with main electrical load control panel
- Heavy duty circuit breakers
- Isolating switches to all batteries

12 Volt

- Batteries - 2 x heavy duty batteries wired in parallel supplying domestic services
- Battery - 1 x heavy duty battery exclusively for port engine starting
- Battery - 1 x heavy duty battery exclusively for starboard engine starting
- Regulated charger

240 Volt

- Polarity check and earth leakage protection system
- Power points throughout the boat (fed from shore power or generator)
- Shore power supply

Tankage

Fuel System

- Changeover valve system to permit each engine to draw fuel from, and return fuel to, either tank
- Emergency fuel shut-off valves accessible via cable-operated remote control
- High capacity water separators and fuel filters
- Individual fillers and vents to port and starboard
- Marine grade alloy fuel tanks x 2

Freshwater System

- Automatic, pressurised supply
- Calorifier hot water system
- Water tank(s)

Gas

- All gas burners fitted with flame failure protection devices
- Copper, polythene sheathed supply pipe

- Single tail feed with regulator and gas low system test meter
- Stowage for gas bottle in self-venting cockpit locker

Disclaimer

The Company offers the details of this vessel in good faith but cannot guarantee or warrant the accuracy of this information nor warrant the condition of the vessel. A buyer should instruct his agents, or his surveyors, to investigate such details as the buyer desires validated. This vessel is offered subject to prior sale, price change, or withdrawal without notice.

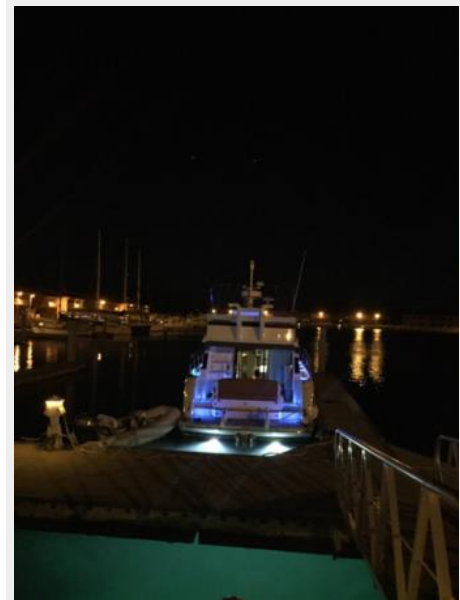
Exclusions

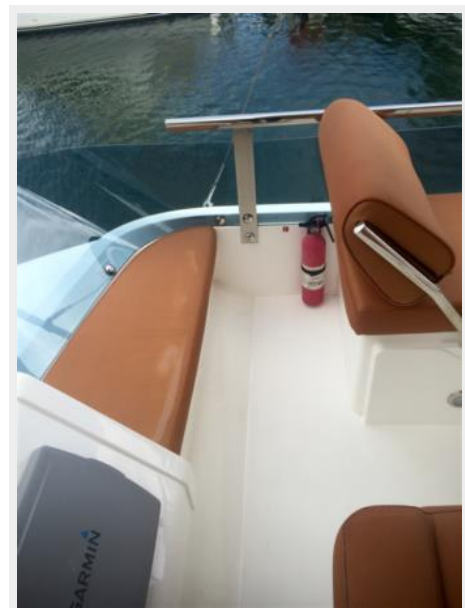
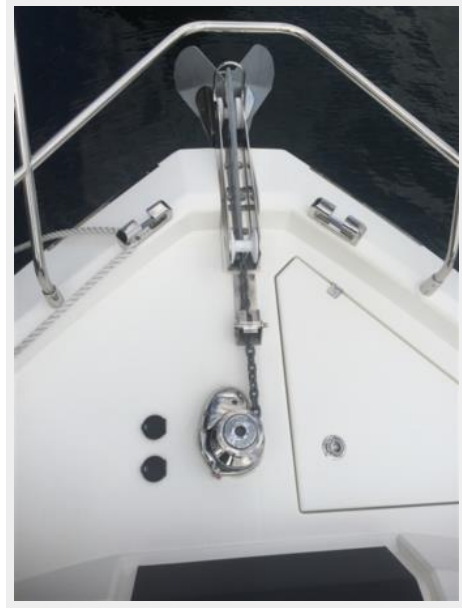
Owner's personal belongings.

Disclaimer

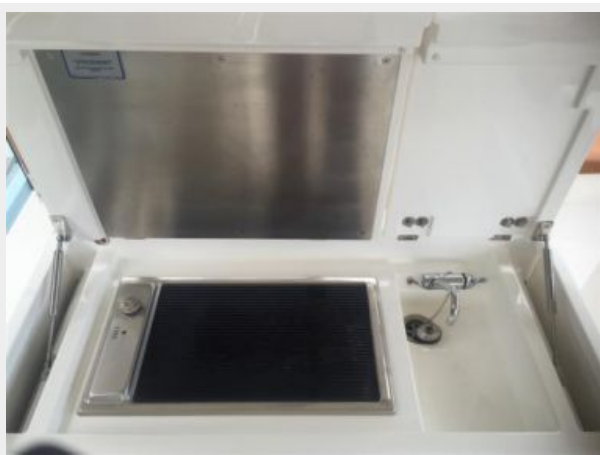
The Company offers the details of this vessel or yacht in good faith but cannot guarantee or warrant the accuracy of this information nor warrant the condition of the vessel. A buyer should instruct his representatives, agents, or his surveyors, to investigate such details as the buyer desires validated. This vessel or yacht is offered subject to prior sale, price change, or withdrawal without notice.

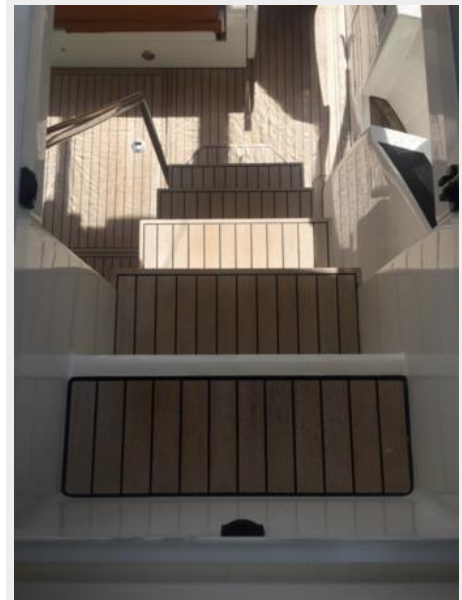
PHOTOS

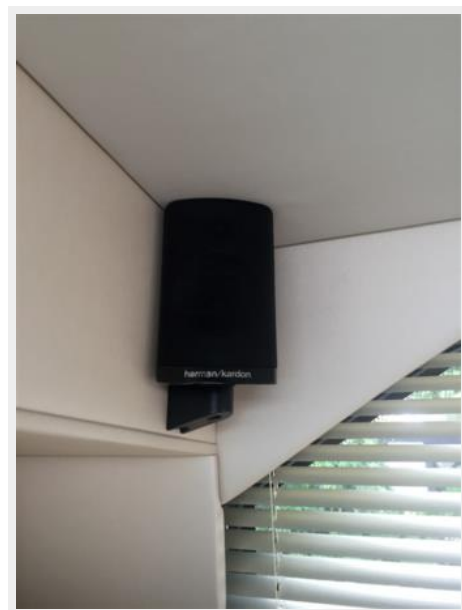
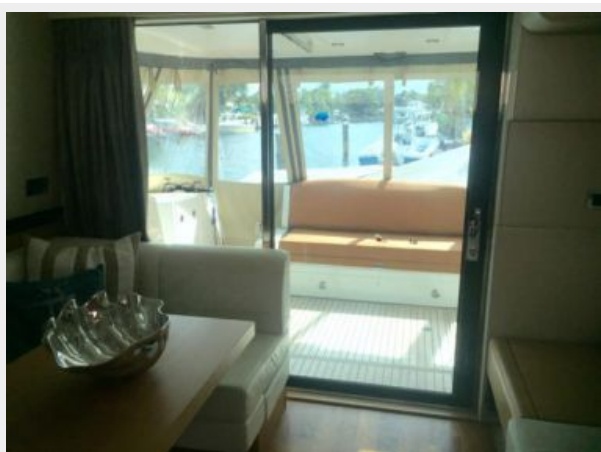




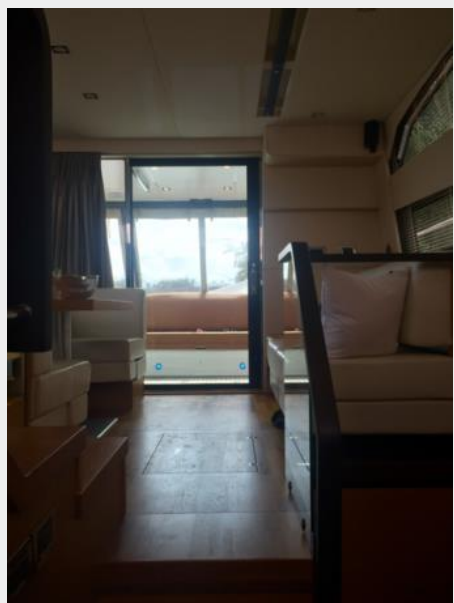
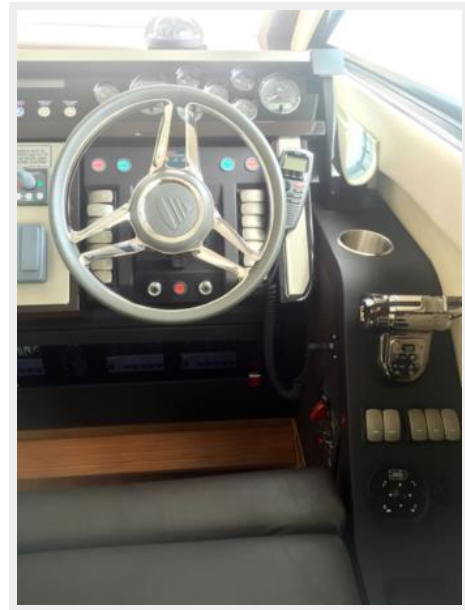




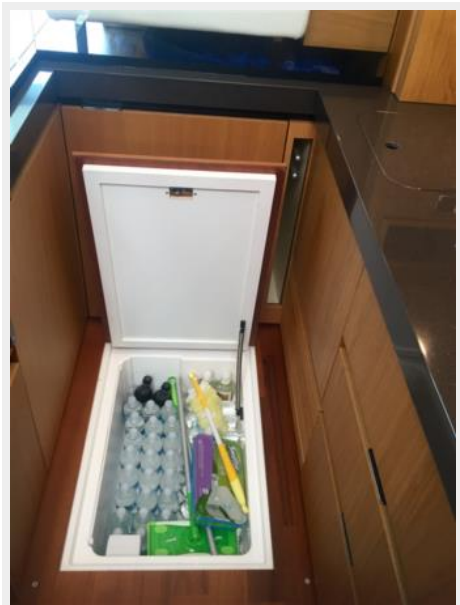
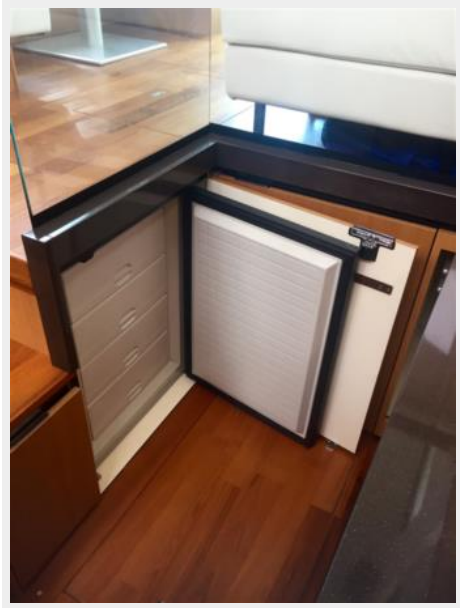


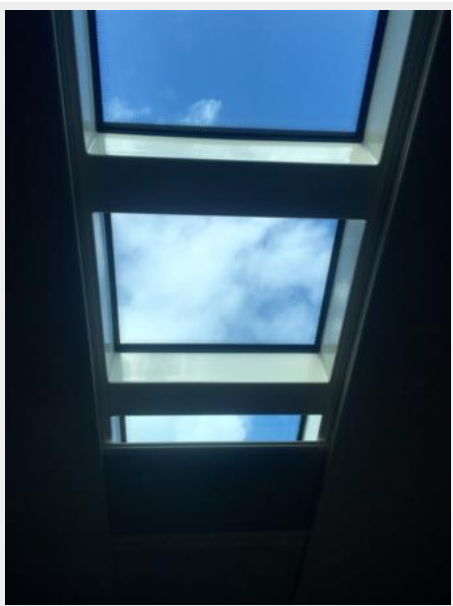
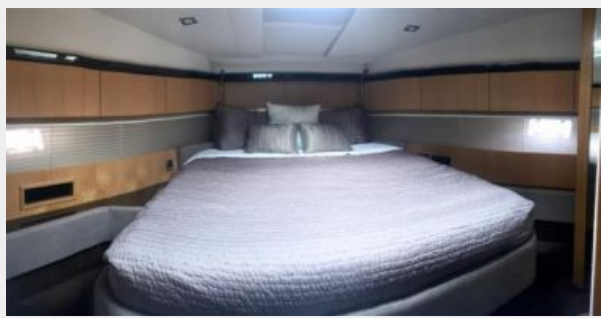
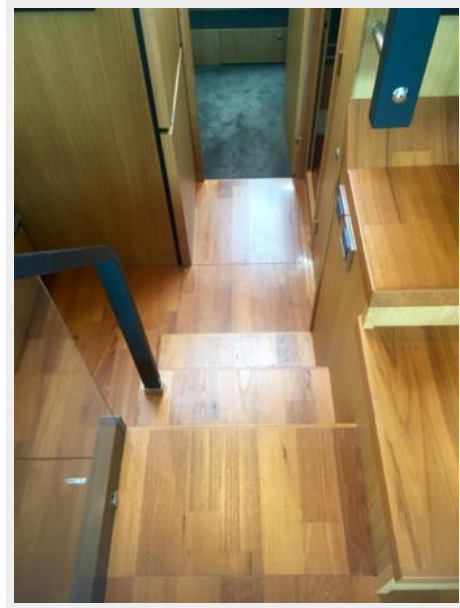


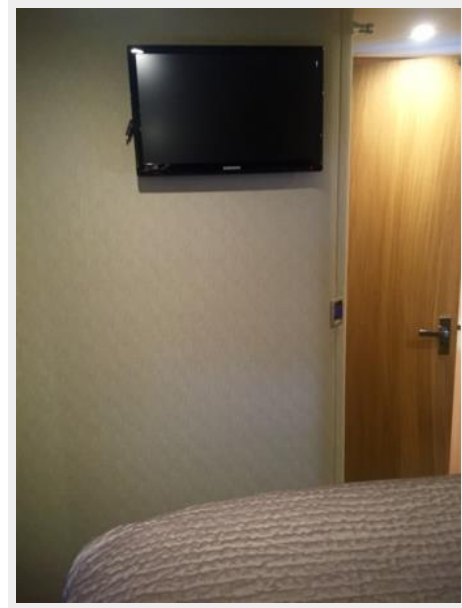


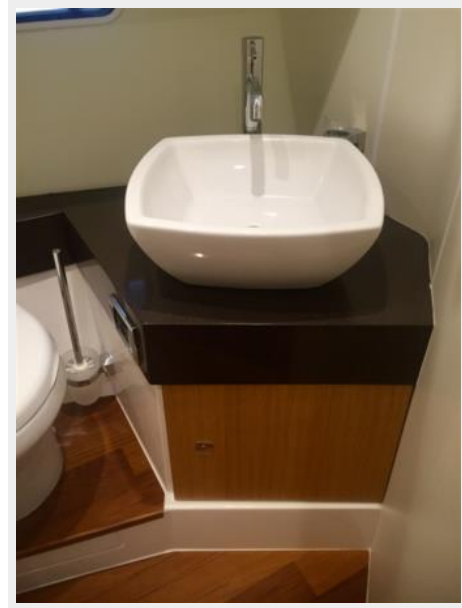






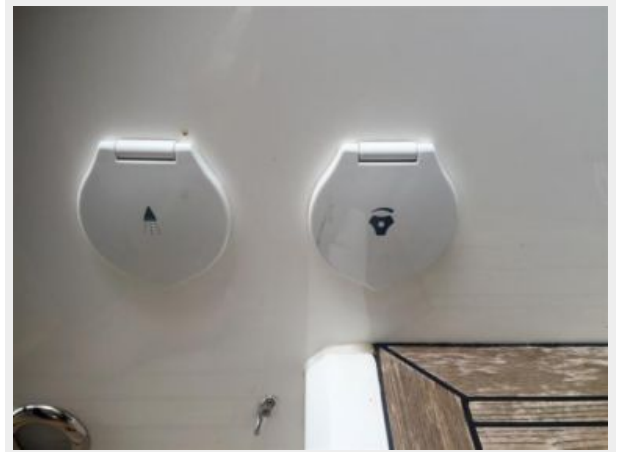


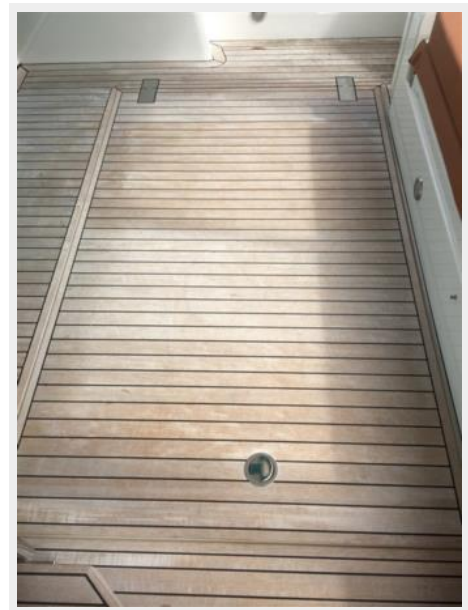














CONTACTS

Andrey Shestakov, leading yacht broker of the sales department of Shestakov Yacht Sales Inc. Shestakov Yacht Sales Inc., the official representative of the Miami/Fort Lauderdale FL headquarters.

Contact details

Email: andrey@shestakovyachtsales.com

Web: shestakovyachtsales.com/en/

Telephones

USA: +1(954)274-4435

Office hours

Monday – Saturday: **9:00 - 21:00** EDT

Sunday: **closed**

Address



Harbour Towne Marina, 850 NE 3rd St,
STE 213, Dania, FL 33004