

O SEA D — FAIRLINE



Судостроитель: FAIRLINE

Год постройки: 2014

Модель: Моторная яхта

Цена: ЦЕНА ЯХТЫ ПО ЗАПРОСУ

Местонахождение: United States

Длина общая: 42' 6" (12.95m)

Ширина: 13' 10" (4.22m)

Мин. осадка: 3' 6" (1.07m)

Крейс. скорость: 24 Kts. (28 MPH)

Макс. скорость: 30 Kts. (35 MPH)

Купить O SEA D — FAIRLINE а также выбрать подходящую вам яхту из нашего каталога яхт вам поможет опытный яхтенный брокер Андрей Шестаков. На сегодняшний день компания Shestakov Yacht Sales Inc. имеет большое количество яхт в собственном списке продаж, а также тесно сотрудничает со всеми крупными яхтенными производителями по всему миру.

Для того чтобы купить яхту O SEA D — FAIRLINE а также проконсультироваться по любому вопросу связанному с покупкой, продажей, чартером яхт позвоните по телефону **+7(918)465-66-44**.

ОГЛАВЛЕНИЕ

ОГЛАВЛЕНИЕ	2
ХАРАКТЕРИСТИКИ	3
Обзор	3
Основная информация	3
Размеры	3
Скорость, вместимость и масса	3
Размещение	4
Корпус и палуба	4
Информация о двигателе	4
ПОДРОБНОЕ ОПИСАНИЕ	5
Main Saloon	5
Deck	5
Fly Bridge and Main Helm	6
Accommodations	7
Engines and Stern Gear	8
Electrical Systems	9
Tankage	9
Disclaimer	10
Исключения	10
Отказ от ответственности	10
ФОТОГРАФИИ	11
КОНТАКТЫ	29
Контактная информация	29
Телефоны	29
Время работы	29
Адрес	29

ХАРАКТЕРИСТИКИ

Обзор

This yacht proved to be one of the most ambitious challenges. How can the identity of the most inspiring and exclusive Fairline models translate into a smaller yacht?

It was the most wonderful brief for the designers that would require every ounce of their ingenuity and experience. The result is a compact Squadron with the genuine feeling of a much, much larger yacht. Each area has been designed to work in harmony with the next. Your journey through the entire yacht is seamless, with no interruptions. And it is this flow that gives a feeling of a luxurious, open space. The type of freedom you would only expect from a 50+ foot yacht. The large flybridge isn't just for show, every aspect has been carefully considered to create the space for people to move around freely. Yes, we can safely say, it is every inch a Squadron.

Основная информация

Тип судна: Моторная яхта

Подкатегория: Кубрик

Модельный год: 2014

Год постройки: 2014

Страна: United States

Верх: Bimini Top

Открытая палуба мостика: Да

Кубрик: Да

Размеры

Длина общая: 42' 6" (12.95m)

Ширина: 13' 10" (4.22m)

Мин. осадка: 3' 6" (1.07m)

Трапы: 15' 10" (4.83m)

Скорость, вместимость и масса

Крейс. скорость: 24 Kts. (28 MPH)

Макс. скорость: 30 Kts. (35 MPH)

Водоизмещение: 28660.09406 Pounds

Вместимость воды: 103 Gallons

Объем топливного бака: 263 Gallons

Размещение

Всего кают: 2

Всего коек: 2

Спальные места: 4

Всего ком. состава: 2

Корпус и палуба

Материал корпуса: GRP

Материал палубы: Teak

Комплектация корпуса: Deep Vee

Цвет корпуса: White

Дизайнер корпуса: Bernard Olesinski

Информация о двигателе

Двигатели: 2

Производитель: CAT

Модель: C7

Тип двигателя: Inboard

Тип топлива: Diesel

ПОДРОБНОЕ ОПИСАНИЕ

Main Saloon

- 19" flatscreen TV with Video iBoat dock
- Aerial and connections for television
- Blinds to side windows
- Curtains to patio door
- Dining table
- First aid kit
- Freestanding sideboard with cocktail cabinet and provision for optional 32" TV
- Full-height standing headroom
- Full length saloon windows
- Halogen ceiling lights
- Handrail with glass partition leading to galley
- Sofa

Deck

- Anchor chain locker
- Anchor winch (electric)
- Anchor winch controls
- Calibrated anchor chain
- Delta anchor 16kg with 45m chain (galvanised)
- Fender set
- Foredeck lockers
- Fuel fillers
- Full set of IMCO navigation lights
- Horn to radar mast
- Hot and cold water transom shower
- Moulded non-slip deck surface
- Recessed self-draining area on foredeck for coachroof sun cushions
- Riding light
- Stainless steel bow, spring and stern cleats
- Stainless steel bow fairlead(s)
- Stainless steel handrails
- Stainless steel pulpit
- Stainless steel stemhead roller
- Swim ladder
- Teak laid bathing platform
- Toughened glass curved windscreen
- Transom gates from cockpit to integral bathing platform

- Water filler(s)
- Windscreen wipers

Fly Bridge and Main Helm

- 12V heavy duty weatherproof socket
- Access hatch
- Bilge pump warning lights and audible alarms
- Bolstered helm seating
- Chaise-longue seat
- Companion seating to helm
- Deck level lighting
- Drinks holders
- Electronic single-lever throttle and gear controls for port and starboard engines
- Ensign and staff
- GRP flybridge table
- Garmin GMI 10 digital multi-function instrument system with colour display
- Helm position indicator
- High speed magnetic compass
- Instrument covers
- Moulded non-slip deck surface
- Remote anchor winch controls
- Remote control searchlight with controls at both helm stations
- Repeat flybridge engine instrumentation, controls and electronics
- Stainless steel handrails
- Teak laid oversize flybridge steps
- Trim tab controls
- VHF radio incorporating intercom
- Wind-deflecting screen with grab rail

Main Helm Position

- 12V socket
- Adjustable/tilt steering wheel
- Bilge pump switches with integral operating warning lights and audible alarms
- Bolstered helm seat
- Control panel for 12V/240V domestic electrical circuits
- Controls for engine bay fire extinguisher system
- Electronic single-lever throttle and gear controls for port and starboard engines
- Fuel gauges
- Full engine instrumentation including; tachometers, temperature gauges, battery condition indicators, audible alarms and engine hour meters
- Garmin GMI 10 digital multi-function instrument system with colour display

- Garmin VHF 300i marine radio
- Helm position indicator
- High speed magnetic compass
- Hydraulic steering
- Opening side window (manual)
- Random teak floor
- Red night-light illumination to helm
- Remote anchor winch controls
- Searchlight controls
- Switches for navigation and riding lights, windscreen wipers and engine bay extractor fans
- Trim tab controls

Accommodations

Master Cabin

- Bedside table
- Drawer(s) under bed
- Full-height standing headroom
- Halogen ceiling lights
- Large hatch with flyscreen and concealed blinds to foredeck
- Lockers (overhead)
- Master cabin skylight
- Mirror
- Opening hull windows with blinds
- Oversized double bed
- Reading lights
- Upholstered bedhead
- Wardrobe(s)

Master En Suite

- 220V/240V shaving point
- Automatic shower tray pump-out system
- Electric silent-flush freshwater toilet
- Extractor fan
- Foundations® vanity unit locker and basin with hot and cold pressurised water
- Full set of bathroom fittings
- Full standing height shower with hinged door
- Halogen ceiling lights
- Mirror
- Opening hull windows with blinds

Starboard Guest Cabin

- Bedside stowage
- Double doors to en suite
- Full length berths x 2 with sliding conversion to double bed
- Full standing height shower with solid teak gratings, seat and hinged door
- Halogen ceiling lights
- Lockers (overhead)
- Mirror
- Opening hull windows with blinds
- Reading lights
- Wardrobe(s)

Guest Cabin En Suite

- 220V/240V shaving point
- Automatic shower tray pump-out system
- Day Access
- Electric silent-flush freshwater toilet
- Extractor fan
- Foundations® vanity unit locker and basin with hot and cold pressurised water
- Full set of bathroom fittings
- Full standing height shower with solid teak gratings, seat and hinged door
- Mirror
- Opening hull windows with blinds

Engines and Stern Gear

- Access through cockpit hatch
- Aerodynamically designed engine air intakes
- Automatic bilge pumps for forward bilge, engine bay and rudder bay with manual 'on' override
- Automatic engine bay fire extinguisher system with warnings at both helms
- Balanced rudders
- Cathodic protection
- Dripless shaft seals
- Electric engine bay fan(s)
- Electro-hydraulic trim tabs with cathodic protection
- Engine bay lights
- Engine room soundproofing
- Exhaust overheat warning system
- High capacity emergency manual bilge pump system with changeover valves
- Manganese bronze 'P' brackets
- Manganese bronze propellers contra-rotating

- Sea cocks on all inlets/outlets below waterline
- Stainless steel alloy shafts
- Water cooled engine exhausts with silencers and side outlets

Electrical Systems

- All 240V, 24V and 12V circuits (where applicable) protected by circuit breakers with main electrical load control panel
- Heavy duty circuit breakers
- Isolating switches to all batteries

12 Volt

- Batteries - 2 x heavy duty batteries wired in parallel supplying domestic services
- Battery - 1 x heavy duty battery exclusively for port engine starting
- Battery - 1 x heavy duty battery exclusively for starboard engine starting
- Regulated charger

240 Volt

- Polarity check and earth leakage protection system
- Power points throughout the boat (fed from shore power or generator)
- Shore power supply

Tankage

Fuel System

- Changeover valve system to permit each engine to draw fuel from, and return fuel to, either tank
- Emergency fuel shut-off valves accessible via cable-operated remote control
- High capacity water separators and fuel filters
- Individual fillers and vents to port and starboard
- Marine grade alloy fuel tanks x 2

Freshwater System

- Automatic, pressurised supply
- Calorifier hot water system
- Water tank(s)

Gas

- All gas burners fitted with flame failure protection devices
- Copper, polythene sheathed supply pipe

- Single tail feed with regulator and gas low system test meter
- Stowage for gas bottle in self-venting cockpit locker

Disclaimer

The Company offers the details of this vessel in good faith but cannot guarantee or warrant the accuracy of this information nor warrant the condition of the vessel. A buyer should instruct his agents, or his surveyors, to investigate such details as the buyer desires validated. This vessel is offered subject to prior sale, price change, or withdrawal without notice.

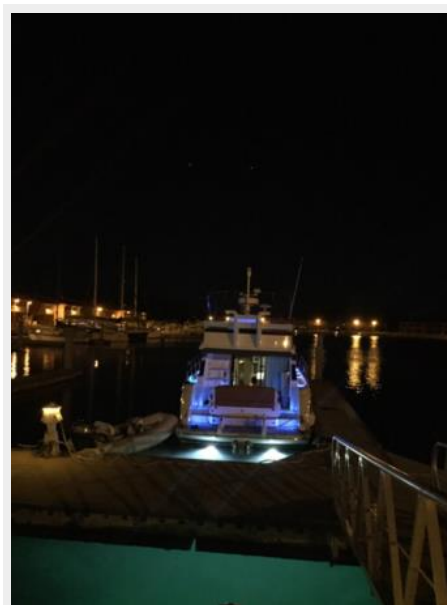
Исключения

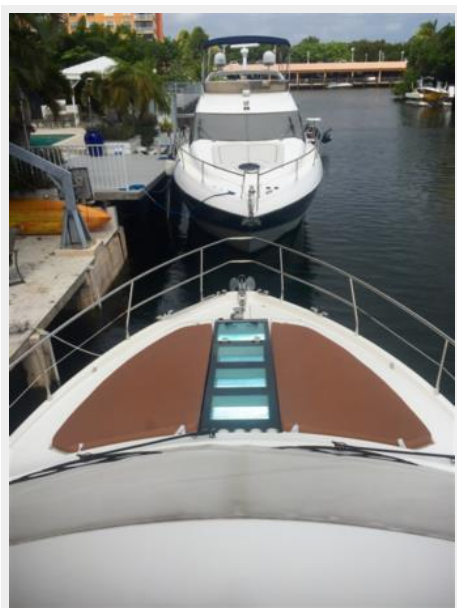
При продаже яхты исключаются личные вещи владельца.

Отказ от ответственности

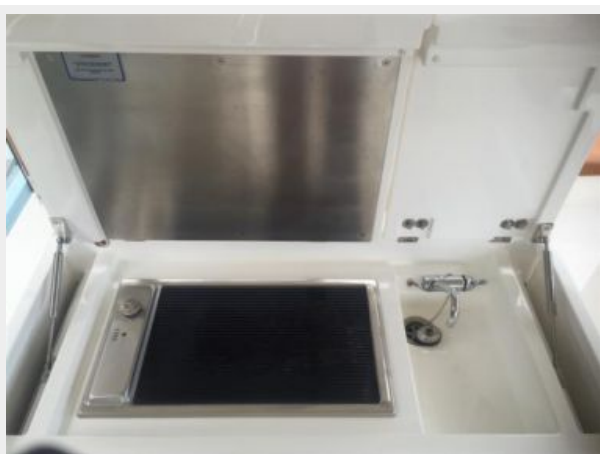
Компания предоставляет описание судна или яхты добросовестно, но не может гарантировать точность этой информации, а также не ручается за техническое состояние. Покупатель должен проинструктировать своих агентов или оценщиков исследовать представленную информацию более подробно, по собственному желанию. Продажа судна или яхты, изменение цены или снятие с продажи будет происходить без предварительного уведомления.

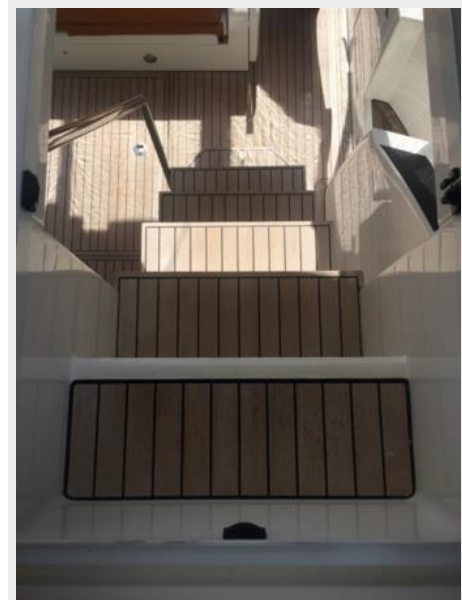
ФОТОГРАФИИ

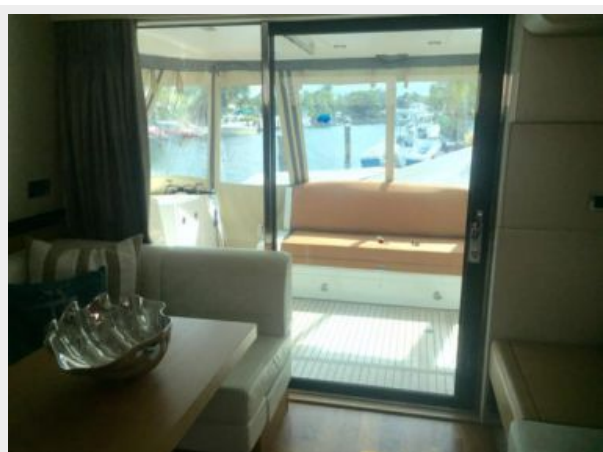
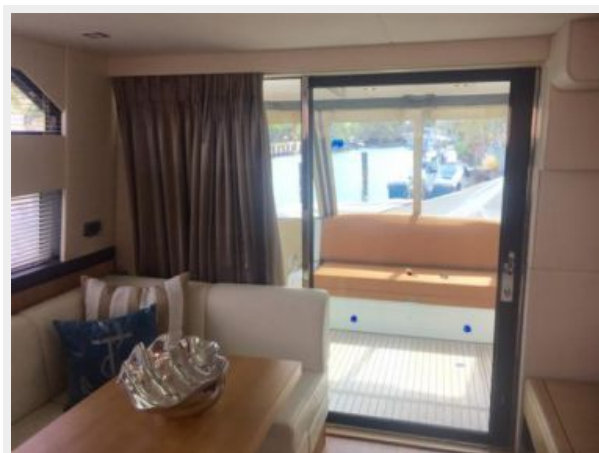




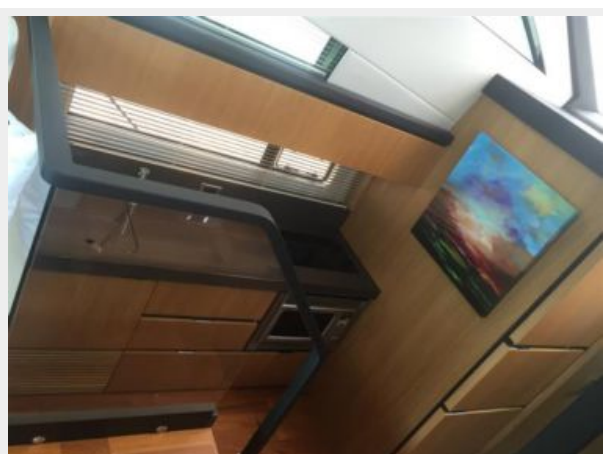
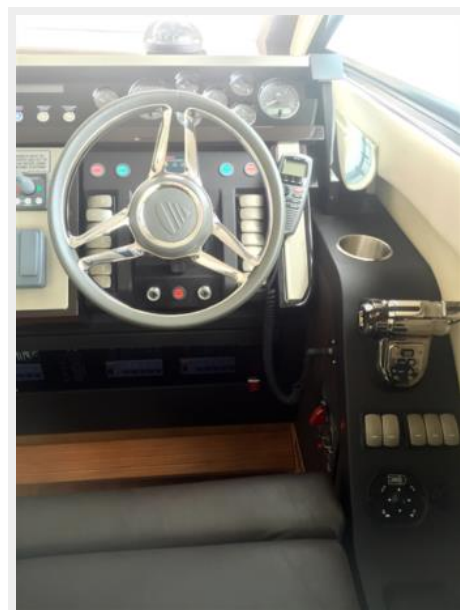


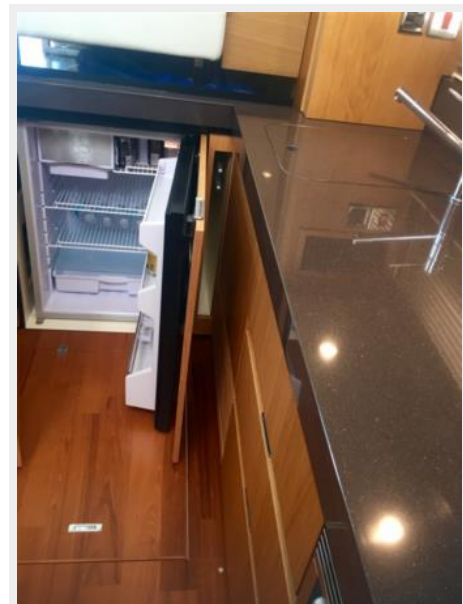


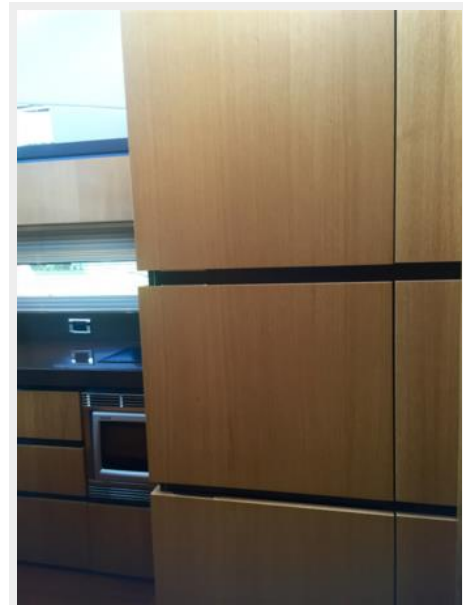
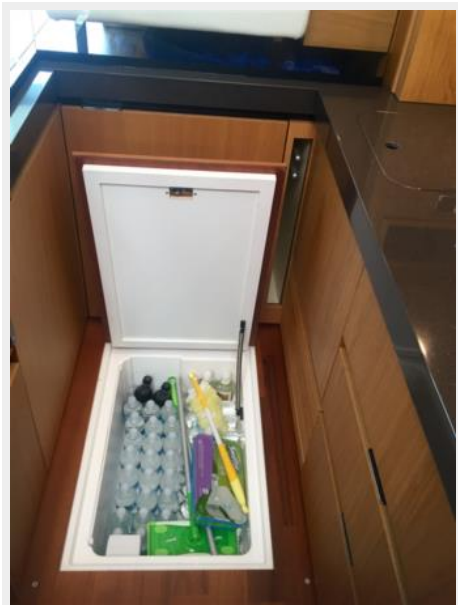
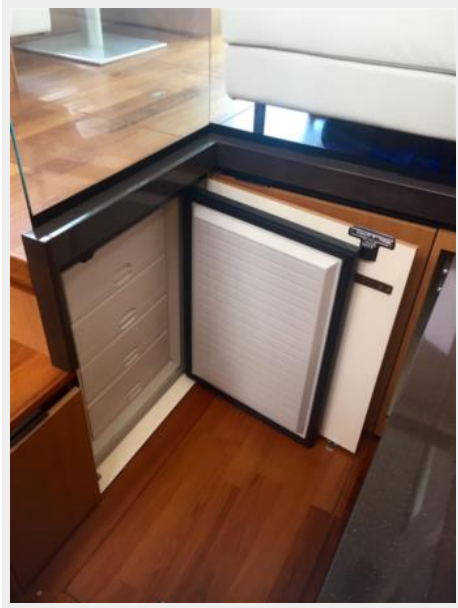


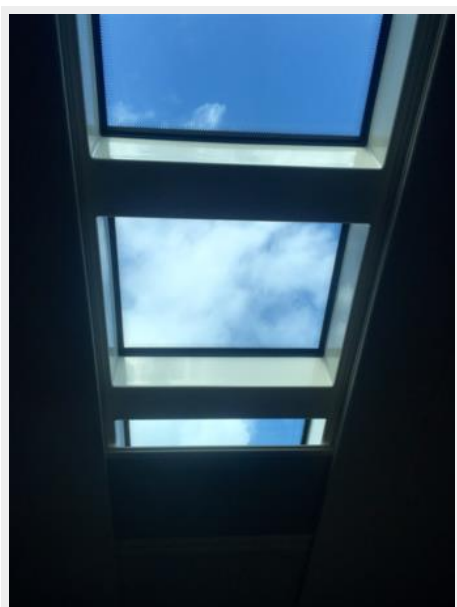
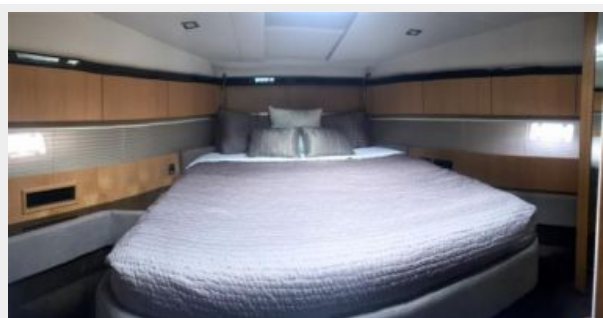


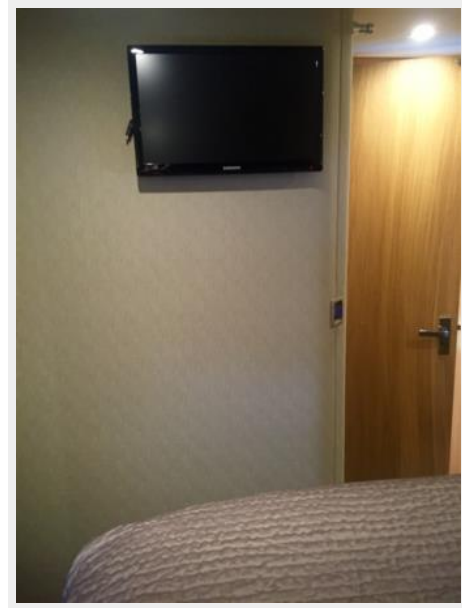


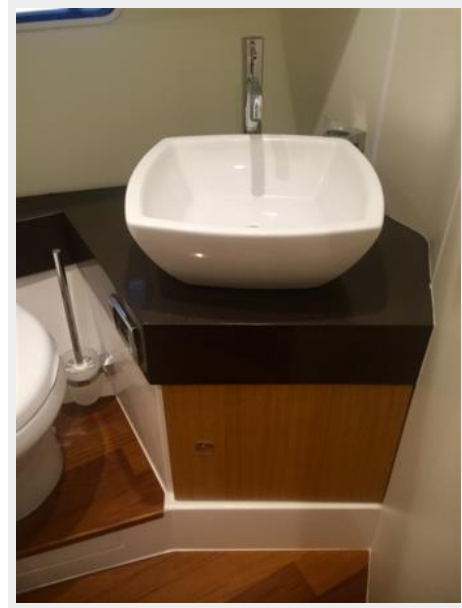








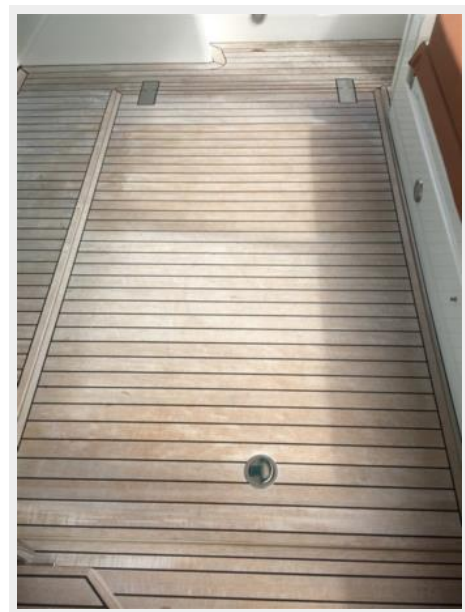














КОНТАКТЫ

Андрей Шестаков (Andrey Shestakov) – ведущий яхтенный брокер отдела продаж яхт и судов компании Shestakov Yacht Sales Inc. Официальный представитель Shestakov Yacht Sales Inc. для русскоговорящих клиентов в центральном офисе компании в Майами/Форт Лодердейл/Флорида/США.

Контактная информация

Email: andrey@shestakovyachtsales.com

Web: shestakovyachtsales.com

Телефоны

Краснодарский край: **+7(918)465-66-44**

США, Майами, Флорида: **+1(954)274-4435**

Время работы

Понедельник – Суббота: **9:00 - 21:00**
EDT

Воскресенье: **Закрито**

Адрес



Harbour Towne Marina, 850 NE 3rd St,
STE 213, Dania, FL 33004