

DOUBLE DOWN — BROWARD



Судостроитель: BROWARD

Год постройки: 1998

Модель: Моторная яхта

Цена: **ЦЕНА ЯХТЫ ПО ЗАПРОСУ**

Местонахождение: United States

Длина общая: 107' 0" (32.61m)

Ширина: 20' 0" (6.10m)

Мин. осадка: 6' 0" (1.83m)

Макс. осадка: 6' 6" (1.98m)

Крейс. скорость: 18 Kts. (21 MPH)

Макс. скорость: 23 Kts. (26 MPH)

Купить **DOUBLE DOWN — BROWARD** а также выбрать подходящую вам яхту из нашего каталога яхт вам поможет опытный яхтенный брокер Андрей Шестаков. На сегодняшний день компания **Shestakov Yacht Sales Inc.** имеет большое количество яхт в собственном списке продаж, а также тесно сотрудничает со всеми крупными яхтенными производителями по всему миру.

Для того чтобы купить яхту **DOUBLE DOWN — BROWARD** а также проконсультироваться по любому вопросу связанному с покупкой, продажей, чартером яхт позвоните по телефону **+7(918)465-66-44**.

ОГЛАВЛЕНИЕ

ОГЛАВЛЕНИЕ	2
ХАРАКТЕРИСТИКИ	5
Основная информация	5
Размеры	5
Скорость, вместимость и масса	5
Размещение	5
Корпус и палуба	6
Информация о двигателе	6
ПОДРОБНОЕ ОПИСАНИЕ	7
Double Down	7
Updates	7
Accommodations/Layout	8
Generator & Electricity	8
Air Conditioning	9
Other Machinery	9
Transmissions	9
Generators	9
Communication	9
Navigation Systems	10
Entertainment System	10
Main Galley	10
Additional Refrigeration (2009)	10
Laundry Equipment	10
Deck Equipment	11
Safety Equipment	11
Remarks	11
Exclusions	11
Исключения	11

Отказ от ответственности	11
ФОТОГРАФИИ	12
Engine Room Access	12
Large Euro Transom	12
Aft Deck	12
Main Salon	12
Main Salon	12
Main Salon	12
Custom Head	13
Hallway	13
Island Galley	13
Galley Stainless Steel Appliances	13
Master Stateroom King Berth	13
Master Stateroom	13
Master Stateroom Head	14
Master Stateroom Head - Jacuzzi Tub	14
VIP Stateroom	14
VIP Stateroom	14
VIP Custom Head	15
VIP Seating Area	15
Twin Guest Stateroom	15
Twin Guest Stateroom	15
Twin Guest Stateroom Custom Head	15
Helm Area	15
Flybridge Jacuzzi	16
Flybridge Seating	16
Flybridge Seating	16
Flybridge	16
Flybridge	16

Flybridge	16
Bow Seating	17
КОНТАКТЫ	18
Контактная информация	18
Телефоны	18
Время работы	18
Адрес	18

ХАРАКТЕРИСТИКИ

Основная информация

Тип судна: Моторная яхта

Модельный год: 1998

Год постройки: 1998

Страна: United States

Номер регистрации в береговой
охране: 1220887

Размеры

Длина общая: 107' 0" (32.61m)

Ширина: 20' 0" (6.10m)

Мин. осадка: 6' 0" (1.83m)

Макс. осадка: 6' 6" (1.98m)

Трапы: 38' 0" (11.58m)

Длина привального бруса: 108' 0"
(32.92m)

Скорость, вместимость и масса

Крейс. скорость: 18 Kts. (21 MPH)

Макс. скорость: 23 Kts. (26 MPH)

Водоизмещение: 140000 Pounds

Вместимость воды: 1200 Gallons

Объем топливного бака: 8500 Gallons

Размещение

Всего кают: 4

Всего коек: 4

Спальные места: 8

Всего ком. состава: 7

Каюты экипажа: 3

Койки экипажа: 5

Комм. состав экипажа: 1

Корпус и палуба

Материал корпуса: Aluminum

Комплектация корпуса: Semi-Displacement

Информация о двигателе

Двигатели: 2

Производитель: Caterpillar

Модель: 3412

Тип двигателя: Inboard

Тип топлива: Diesel

ПОДРОБНОЕ ОПИСАНИЕ

Double Down

Double Down is a highly customized 1998 Broward Raised Pilothouse Motor Yacht with 4 staterooms plus 3 crew cabins. In 2009 she was purchased by her second and current owner and underwent a complete and extensive refit. With the addition of a cockpit, an entire reconfiguration of the bridge deck and a full top to bottom interior refit, Double Down is like no other Broward around. Double Down is as highly customized as they come. In 2013 she underwent further refit including new electronics and exterior paint, a complete engine room reconfiguration, and the addition of a sewage treatment plant. At this time Double Down's main engines and generators exhaust were converted to discharge under water, a retro fit that creates a quiet and smokeless experience. Finally in 2013, Double Down also underwent an expensive stabilizer upgrade including larger stabilizer fins and full electronic control. She is competitively priced and available to be seen in Fort Lauderdale.

Updates

- Low operating costs
- Modern Broward layout
- Cat engines with 3400 hours
- Low ZF transmission hours
- Northern lights gens 3300/4100 hrs
- CoFeMe Underwater exhaust 2013
- Fast cruise 18kts 24kts wot
- Great fuel economy
- New electronic Naiad stabilizers new 2013
- Larger stabilizer fin upgrade 2013
- Sewage treatment plant 2013
- Flybridge layout completely new 2009
- Cockpit new 2009
- New aft deck layout 2009
- All Aluminum work done by Steve Tran
- Paint new 2009
- Hull re pray 2013
- Engine room awl grip 2013
- Helm refit with upgraded electronics 2014
- No Teak to varnish
- Aft deck wind/privacy screens 2015
- New headliner throughout 2009
- New carpet 2013/2015
- Full interior refit 2009 (Karen Lynn)

- Great refrigeration and freezer space
- Spare propellers
- Crestron control throughout 2009
- Custom stainless safety railings throughout
- Gangway placement 2 per side
- Running gear out and checked 2013
- Cutlass bearings and drip less seals 2013
- Bottom paint 2015
- Prop speed, wheel balance 2015

Accommodations/Layout

Double Down sleeps 8 guests in 4 staterooms. Crew accommodations include 5 berths in 3 staterooms, head and shower. The full beam Master Stateroom is located just forward of amidships along the centerline of the yacht to ensure maximum comfort and stability. His and Hers heads with granite floors include an enlarged glass enclosed granite shower to starboard and a large soaking tub with jets to port. His and Hers walk-in cedar-lined closets complement the arrangement. Additional dresser space and a comfortable settee complete the dressing area. The two Guest Staterooms are located off the main accommodation passageway. Large cedar-lined closets and private ensuite heads flank the berths. In the lower companionway, there is a Miele stackable washer/dryer (2009) combo and utility closet with a storage cabinet. Oversized windows, including floor-to-ceiling windows looking to the aft deck, surround the entire salon. All windows are tinted and feature Hunter Douglass blinds. Custom overhead vents provide defused airflow from the over-sized chilled water air conditioning system. From the aft deck upon entering the Main Salon you will notice matching oversized armchairs port and starboard that include large ottomans that open for storage. Beyond to port is a L-shaped sofa with a generous coffee table both of which open boasting ample storage. Forward in the salon is a glass topped dining table. There are built-in buffet cabinets of maple with ebony and leather inlays for trays, glasses, dishes and liquor storage. To the starboard, this built in houses a pop up flat screen television and AV component storage. The day head is located forward off the starboard passageway, and includes granite vanity top, granite flooring. The Galley is a beautiful country kitchen with upgraded appliances and granite countertops. Forward of the Galley is the VIP stateroom. This will accommodate 2 with a desk, head/shower, large cedar closet and island double bed. The pilothouse has a custom L-shaped settee with a Corian table and (3) storage drawers, custom cabinets either side of the center helm and teak holly sole.

Generator & Electricity

- Output: 40 kW
- Generators: 2X Northern Lights (John Deere)
- Generator Hours: 3276 / 4095 hrs
- Generator Fuel Consumption: 2-7 US Gal/Hr (Depending on Loading)

- Shore Power: Two, 100-amp Single Phase
- Batteries: Main Engines two Banks 24 volt
- Generators: Two banks 12 volt
- House: 1 banks 12 volt 1 Bank 24 volt

Air Conditioning

- Type: Marine Air. 3 x 60,000 BTU compressors. 12 separate Air handlers. (each cabin)

Other Machinery

- Watermaker: Sea Recovery 60 GPH. (3 Membranes)
- Stabilizers: Naiad (Planes Upgraded in 2013 with electronic control)
- Bow Thruster: American Bow Thruster
- Steering System: Hynautic
- Fuel Separator & Filtration: Main engine Racor 3 bank 20/20
- Generators Single Racor 20/10
- Sewage System: 600 US gal. Tecnicomar Sewage treatment Plant. (New 2013)
- Gray water: Direct overboard discharge
- Fresh Water System: 1200 US gal holding tank. Two Head Hunter Mach 5 Jet Pumps

Transmissions

- Brand: ZF
- Model: BW190
- Ratio: 2.57:1

Generators

- Brand: Northern Lights
- KW: 40
- Hours Port: 3276
- Hours Stbd: 4095

Communication

- VHF: 2 X Icom 504 at helm with command mics at bridge deck helm.

Navigation Systems

- Radar: 1 Furuno 12 KW
- Radar: 2 Furuno Navnet 3D 25 KW
- Gyrocompass: Furuno & Robertson
- Magnetic Compass: Danforth
- Auto Pilot: Robertson AP20
- Depth Sounder: Furuno RD30
- GPS: Furuno Navnet 3D / Nobeltec
- Weather FAX: XM Weather Works
- Ships Computer: HP

Entertainment System

- Video Equipment: (2009) KVH Satellite TV with receivers in the galley, salon & all cabins including crew staterooms. DVD players in salon, Master and VIP. Smart remotes in Master and VIP stateroom. Crestron automated control via Ipad in Salon. Closed circuit TV with 4 cameras viewable on TVs and helm displays. All TVs upgraded to flat screens in 2009.
- Audio Equipment. (2009) Crestron Audio System in salon with separate zone control panels on aft deck, galley, bow and bridge deck.

Main Galley

- Cooking Equipment: (2009) Miele Stainless Steel Convection Oven, GE profile 4 burner cooktop, stainless steel KitchenAid dish washer
- Refrigeration/Freezer: Stainless steel GE side by side refrigerator with ice and water dispenser in door, 4 GE Monogram stainless steel under counter refrigerator draws, 1 GE Monogram under counter refrigerator, 2 Avanti mini freezers in doghouse

Additional Refrigeration (2009)

- 1 GE Monogram two draw drink refrigerator located on aft deck
- 1 GE Monogram two draw drink refrigerator located on bridge deck
- 1 Isotherm under counter refrigerator located behind bridge deck bar
- 1 Isotherm under counter ice maker located behind bridge deck bar

Laundry Equipment

- Main Laundry Equipment. 1 stackable Miele Washer/Dryer (guest area), 1 stackable GE (crew area)

Deck Equipment

- Anchor Windlass System: Maxwell 3500 • Anchors: 250lb Pool type. • Anchor Chain: 400 ft ½" Galvanized Chain
- Security, Fire Fighting & Safety Equipment • Security Equipment: • CCTV System: 4 Cameras. Aft deck, bridge deck, port engine room, starboard engine room • Fire Fighting Equipment: • Fire Control System: Engine room Halon 1301 Auto/ Manual back-up • Fire Extinguishers: 18 hand-held BCF 1 CO2 & 1 Foam • Alarms: Heat & smoke (x4)

Safety Equipment

- Life Rafts: 1 Revere Commander 6 Man
- Life Rings: 1 life rings
- EPIRBS: ACR 406
- Flares: 4 Parachute flares, 4 red hand-held flares, 2 day smoke flares, 4 white collision-avoidance signal flares
- Medical Equipment: Marine Medical emergency bag, Defibrillator & oxygen bottle

Remarks

- Double Down has been well maintained with regular maintenance and upgrades since new. Major Refits 2009/2013.

Exclusions

Exclusions are to include but are not limited to owner's personal effects. A detailed list of exclusions to be provided upon written request at time of sale.

Исключения

При продаже яхты исключаются личные вещи владельца.

Отказ от ответственности

Компания предоставляет описание судна или яхты добросовестно, но не может гарантировать точность этой информации, а также не ручается за техническое состояние. Покупатель должен проинструктировать своих агентов или оценщиков исследовать представленную информацию более подробно, по собственному желанию. Продажа судна или яхты, изменение цены или снятие с продажи будет происходить без предварительного уведомления.

ФОТОГРАФИИ

Large Euro Transom



Engine Room Access



Aft Deck



Main Salon



Main Salon



Main Salon



Custom Head



Hallway



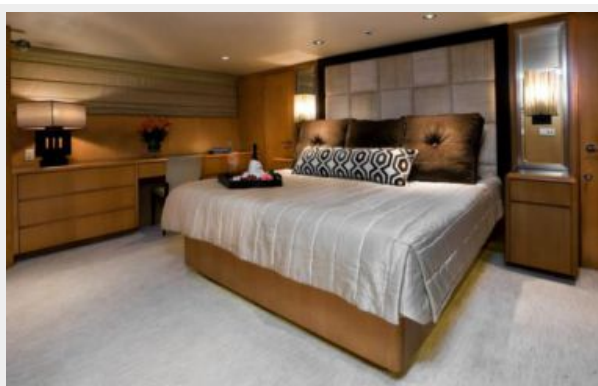
Island Galley



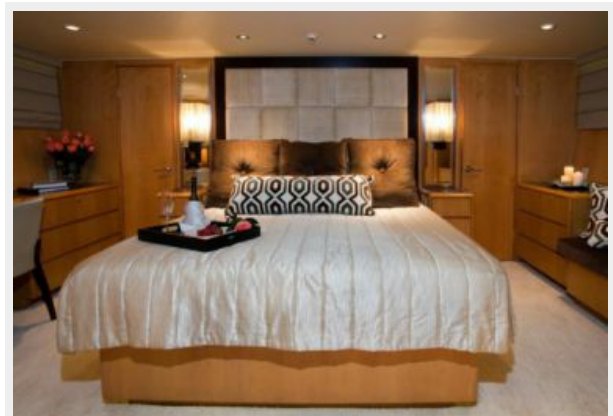
Galley Stainless Steel Appliances



Master Stateroom



Master Stateroom King Berth



Master Stateroom Head - Jacuzzi Tub



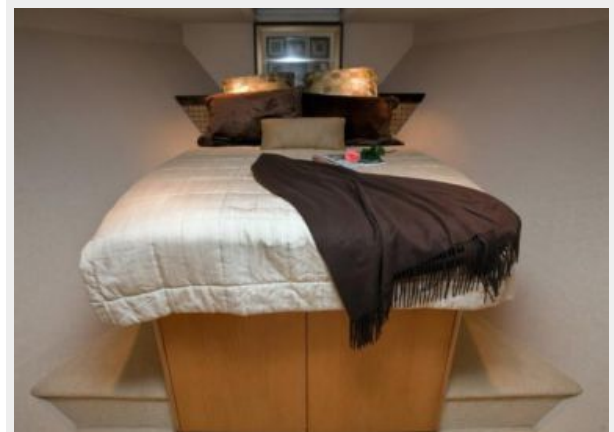
Master Stateroom Head



VIP Stateroom



VIP Stateroom



VIP Seating Area



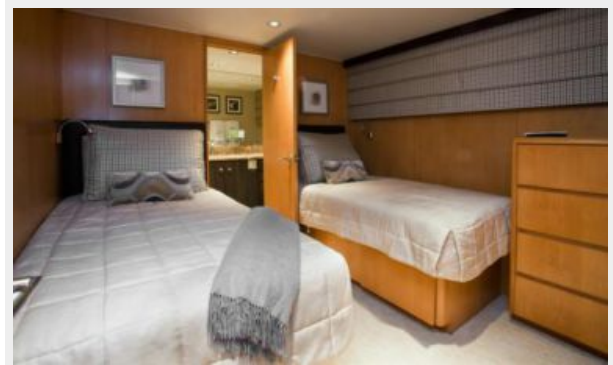
VIP Custom Head



Twin Guest Stateroom



Twin Guest Stateroom



Twin Guest Stateroom Custom Head



Helm Area



Flybridge Jacuzzi



Flybridge Seating



Flybridge Seating



Flybridge



Flybridge



Flybridge



Bow Seating



КОНТАКТЫ

Андрей Шестаков (Andrey Shestakov) – ведущий яхтенный брокер отдела продаж яхт и судов компании Shestakov Yacht Sales Inc. Официальный представитель Shestakov Yacht Sales Inc. для русскоговорящих клиентов в центральном офисе компании в Майами/Форт Лодердейл/Флорида/США.

Контактная информация

Email: andrey@shestakovyachtsales.com

Web: shestakovyachtsales.com

Телефоны

Краснодарский край: **+7(918)465-66-44**

США, Майами, Флорида: **+1(954)274-4435**

Время работы

Понедельник – Суббота: **9:00 - 21:00**
EDT

Воскресенье: **Закрето**

Адрес



Harbour Towne Marina, 850 NE 3rd St,
STE 213, Dania, FL 33004