

SWEET SURRENDER — MARQUIS



Builder: MARQUIS

Year Built: 2013

Model: Motor Yacht

Price: PRICE ON APPLICATION

Location: United States

LOA: 63' 0" (19.20m)

Beam: 17' 2" (5.23m)

Min Draft: 4' 5" (1.35m)

Cruise Speed: 22 Kts. (25 MPH)

Max Speed: 31 Kts. (36 MPH)

Our experienced yacht broker, Andrey Shestakov, will help you choose and buy a yacht that best suits your needs **SWEET SURRENDER — MARQUIS** from our catalogue. Presently, at Shestakov Yacht Sales Inc., we have a wide variety of yachts available on our sale's list. We also work in close contact with all the big yacht manufacturers from all over the world.

If you would like to buy a yacht **SWEET SURRENDER — MARQUIS** or would like help answering any questions concerning purchasing, selling or chartering a yacht, please call **+1(954)274-4435**

TABLE OF CONTENTS

TABLE OF CONTENTS	2
SPECIFICATIONS	4
Overview	4
Basic Information	4
Dimensions	4
Speed, Capacities and Weight	4
Accommodations	5
Hull and Deck Information	5
Engine Information	5
DETAILED INFORMATION	6
Main Salon & Dinette	6
Galley	6
Master Stateroom	6
VIP Stateroom	7
Twin Guest Stateroom	7
Crew Quarters	7
Pilothouse Equipment	8
Electronics & Navigational Equipment	8
Flybridge Equipment	8
Aft Deck & Cockpit Platform	9
Deck Equipment	9
Exterior Paint	9
Electrical Equipment	9
Engine & Mechanical Equipment	10
Comments	10
Exclusions	11
Exclusions	11
Disclaimer	11

PHOTOS	12
CONTACTS	16
Contact details	16
Telephones	16
Office hours	16
Address	16

SPECIFICATIONS

Overview

SWEET SURRENDER represents the only 2013 63' Marquis Sport Yacht currently available on the market and was the Marquis factory's 'showboat' for their new model launched in 2013. The photos in the listing are of the actual vessel! Recent \$200k Price Reduction!

Basic Information

Category: Motor Yacht

Sub Category: Flybridge

Model Year: 2013

Year Built: 2013

Country: United States

Vessel Top: Hardtop

Fly Bridge: Yes

Dimensions

LOA: 63' 0" (19.20m)

Beam: 17' 2" (5.23m)

Min Draft: 4' 5" (1.35m)

Clearance: 17' 9" (5.41m)

MFG Length: 65' 8" (20.02m)

Speed, Capacities and Weight

Cruise Speed: 22 Kts. (25 MPH)

Max Speed: 31 Kts. (36 MPH)

Displacement: 71000 Pounds

Water Capacity: 160 Gallons

Fuel Capacity: 1030 Gallons

Accommodations

Total Cabins: 3

Captain Cabin: True

Crew Berths: 1

Hull and Deck Information

Hull Material: Fiberglass

Interior Designer: Nuvolari Leonard

Engine Information

Manufacturer: Volvo Penta

Model: IPS 1200

Fuel Type: Diesel

DETAILED INFORMATION

Main Salon & Dinette

- Upgraded Nuvolari Leonard interior w/premium fabrics, wallcoverings, walnut & zebrano wood trim
- Cabinet in satin black finish countertop w/wood sea rail & premium leather accent
- Entertainment center w/Sole 42" LED TV, Sony DVD, BlueRay, Sony 5.1 channel home theater receiver, Sonance in-wall theater speakers & Apple iPod dock
- Oyster pine wood satin laminate flooring
- Upholstered sofa w/ 2 integral storage drawers beneath
- (2) Soffits walnut wood, satin finish, port & stbd
- Window treatment w/ Roman shade. leather wrapped blinds & recessed headrails
- Stainless steel entrance door, fully vertical, convex, sliding, handle latch
- U-shaped ultra-leather dinette w/high gloss walnut & zebrano table

Galley

- Walnut & Zebrano wood trip & premium wallcoverings
- Oyster pine wood laminate flooring
- Virtrifigo full-size stainless steel refrigerator/freezer w/3 drawers
- Fisher & Paykel Slimline stainless steel dishwasher
- Contoure stainless steel microwave/convection oven
- Seaward stainless steel 3-burner electric range
- GE Trash compactor
- Stainless steel sink & goose neck fixture
- Solid counter tops & back-splash

Master Stateroom

- Queen berth, pillowtop mattress, wood headboard, padded bolster trim, custom spread & shams, storage below
- Custom carpeting
- Desk, computer workstation
- Premium wallcoverings & fabrics
- Fixed hull windows w/13" port light, port & stbd
- Deck portlights w/decor sliding shades
- LED lighting
- Storage cabinets & ample drawers
- (2) Cedar lined walk-in closets
- Master bath w/marble flooring, satin walnut vanity w/stone countertop & backslpash,

decorative sink, silk wallcovering, mirror above vanity, medicine cabinet, clear glass, walk-in tiled shower w/frameless shower door, teak fold-down seat & teak shower grate, Tecma silent flush head

VIP Stateroom

- Queen tapered berth w/pillowtop mattress, custom spread & shams, storage below
- Upholstered bulkhead w/decorative wall sconces
- Soffit walnut wood trim w/upholstered regatta bolster
- Premium silk wallcovering & custom carpeting
- Drawers & storage cabinets
- Custom carpeting
- Portlights, port & stbd, w/curtains
- LED lighting
- Sole 19" LED TV, Clarion DVD, CD & Apple iPod dock
- Overhead hatch
- (2) Wardrobe lockers
- Ensuite bath w/stone vanity top & backsplash, stainless steel grab rail, soffit, LED lighting, dual stall shower, teak grates, stone crema marfil flooring, vanity, medicine cabinet & (2) entrance doors

Twin Guest Stateroom

- Twin berths, upholstered headboard, padded bolster trim, custom spread & shams, storage below
- Custom carpeting
- Drawers & cabinet storage
- Sole 19" LED TV, Clarion DVD, CD & Apple iPod dock
- Premium wallcoverings & fabrics
- Deck portlights w/decor sliding shades
- LED lighting
- Skylight
- (2) Wardrobe lockers
- Ensuite bath w/stone vanity top & backsplash, stainless steel grab rail, soffit, LED lighting, dual stall shower, teak grates, stone crema marfil flooring, vanity, medicine cabinet, silk wallcovering, (2) entrance doors

Crew Quarters

- Access door to starboard mechanical compartment
- Twin size berth, reading light, storage

- 15" TV, DVD & stereo
- Dual access entrance doors (engine room & swim platform)
- Private head

Pilothouse Equipment

- Full helm station w/faux walnut burl & leather accents
- Ultra leather helm seat, 6-way electric
- Large curved ultra-leather seating
- Windshield wipers & defoggers
- Adjustable steering wheel w/wood rim & hub
- (5) Overhead LED lights
- Speich windshield wiper controls
- Jabsco searchlight control

Electronics & Navigational Equipment

- (4) Raymarine E125 MFD displays
- Navigation w/Radar, (lower helm & bridge)
- Monitoring system, (lower helm & bridge)
- Raymarine Autopilot w/smart controller (lower helm)
- Raymarine DSM 300 depth finder
- Raymarine DSM 30 depth finder (flybridge)
- Lectrotab trim tab controller
- Speich wiper control
- Jabsco searchlight control
- Raymarine VHF 240 (lower helm & bridge)
- Wave wifi system

Flybridge Equipment

- Bridge hardtop w/retractable canvas sunroof
- Full helm station w/double ultra-leather helm seat
- U-shaped seating w/ultra leather cushions & covers
- Built-in curved bar w/sink, Nova Kool refrigerator, Raritan icemaker & storage
- New adjustable teak table w/stainless steel pedestal base
- Kenyon electric stainless steel BBQ grill
- Venturi air deflector
- Safety rail stanchions
- Quick Antarros 1500lb low profile windlass w/capstan
- TV & integrated sound system throughout w/ upgraded outdoor speakers

- New lights & dimmers on all outdoor flybridge lighting

Aft Deck & Cockpit Platform

- Teak decks
- Built-in bench seating w/cushions
- High gloss dining table w/stainless steel pedestal base
- Molded steps to bridge
- Hinged transom gates & teak steps, port & stbd, to cockpit/platform
- Hydraulic, pantographic platform, moves out & down w/remote control
- New stainless extended boarding ladder w/stainless railings
- Access hatch to lazarette & crew quarters
- Dual cockpit capstan winches
- Underwater Ocean LED lighting at transom (new 7/15)
- New grill, additional countertop, fridge & sink in cockpit (new 2015)
- Integrated sound system throughout w/ upgraded outdoor speakers
- New lights & dimmers on all outdoor lighting

Deck Equipment

- Hardtop with opening sunroof
- New Wave tide ride ladder for midship boarding
- Ocean LED underwater lights
- Hydraulically-actuated, pantographic platform
- Cockpit table
- Exterior upgrade package
- Foredeck sunpad
- Helm & seat covers
- Teak decking cockpit/platform
- 12' Brig tender w/Yamaha 50HP & swim platform chocks

Exterior Paint

- Aggregio Metallic w/Carbon Greggio boot stripe
- Black bottom paint

Electrical Equipment

- Kohler 28KW Generator w/sound shield (642 hrs)
- New marine batteries (June 2015)

- (4) Mastervolt battery chargers
- (2) Shore power connectors ,50 amp
- (2) Marinco 75' shower power cords
- Isolation transformers
- Dual cablemasters
- Gost alarm system & remote/mobile cameras w/alarm setting abilities

Engine & Mechanical Equipment

- Twin Volvo Penta IPS 3 1200, 900HP ea, controlled by joystick activated pod drives
- Extended 3-year transferable warranty on Volvo's and IPS drives / joysticks (purchased 2015)
- Dual racor water separating fuel filters
- Marine Air A/C system, 3-zone, 86,000 BTU w/reverse cycle heat
- 600 GPD Watermaker (serviced 7/15)
- Underwater engine exhaust discharge w/auto bypass
- Freshwater cooling for engines
- Electronic Fly-by-wire steering w/emergency mechanical bypass
- Sea strainers
- (4) Stainless steel electric trim tabs
- Dual bridge Volvo joystick controls (upgrade)
- Glendenning cablemaster system (upgrade)
- Overboard discharge system (upgrade)
- Freshwater washdown (upgrade)
- Ghost monitoring system tied into bilges/doors (upgrade)

Comments

SWEET SURRENDER represents the only 2013 63' Marquis Sport Yacht currently available on the market! This vessel was the Marquis factory's 'showboat' for their new model launched in 2013 and the photos in the listing are of the actual vessel! Her custom Nuvoari-Lenard interior is ultra-contemporary and features walnut and zebrino joinery throughout. Her accommodations include a three stateroom layout to include King master, Queen VIP, and twins, all with ensuite heads and upgraded entertainment systems. Entertaining is made simple with an integrated lower helm station, galley, salon, cockpit, and swim deck. Walk from area to area unimpeded by restrictive bulkhead doors, multiple steps or narrow hallways. SWEET SURRENDER is powered by 900HP Volvo ISP 1200's with less than 500 original hours, controlled by joystick activated pod drives and has a 3-year extended transferable warranty on engines and IPS drives / joysticks. Additional options include Kohler 28KW generator, hydraulic swim platform, 11' tender, 600 GPD watermaker, custom hardtop with retractable overhead and much more! Every detail within the yacht demonstrates ultra premium execution quality and the craftsmanship & joinery are the finest you will find in a yacht, regardless of size.

Exclusions

- All owner's personal items

Exclusions

Owner's personal belongings.

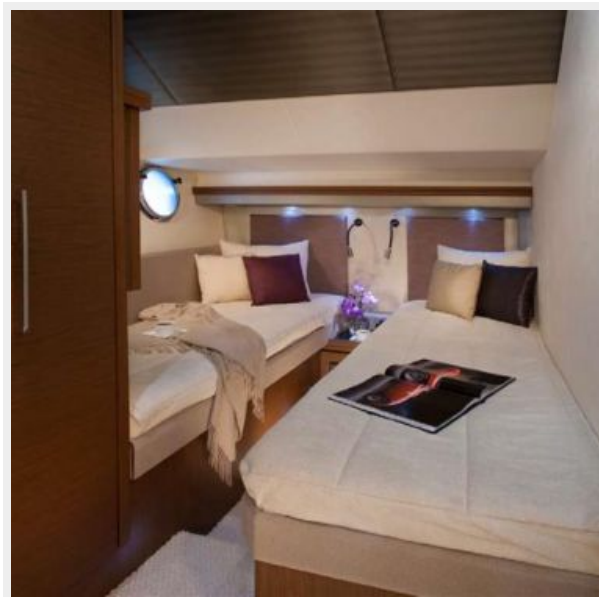
Disclaimer

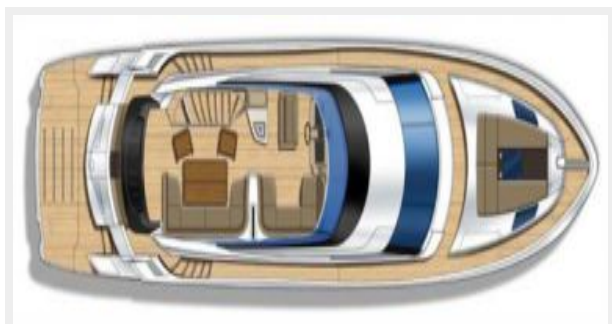
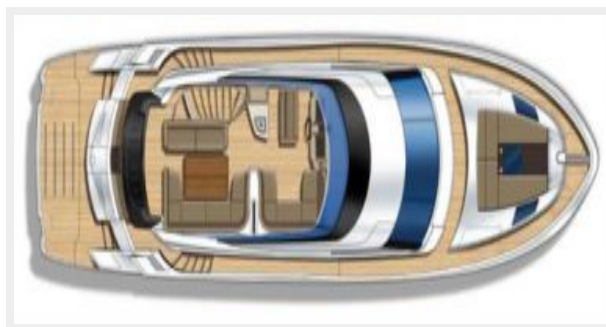
The Company offers the details of this vessel or yacht in good faith but cannot guarantee or warrant the accuracy of this information nor warrant the condition of the vessel. A buyer should instruct his representatives, agents, or his surveyors, to investigate such details as the buyer desires validated. This vessel or yacht is offered subject to prior sale, price change, or withdrawal without notice.

PHOTOS









CONTACTS

Andrey Shestakov, leading yacht broker of the sales department of Shestakov Yacht Sales Inc. Shestakov Yacht Sales Inc., the official representative of the Miami/Fort Lauderdale FL headquarters.

Contact details

Email: **andrey@shestakovyachtsales.com**

Web: shestakovyachtsales.com/en/

Telephones

USA: **+1(954)274-4435**

Office hours

Monday – Saturday: **9:00 - 21:00 EDT**

Sunday: **closed**

Address



Harbour Towne Marina, 850 NE 3rd St,
STE 213, Dania, FL 33004