

## CONCHTANKRUS — OCEAN YACHTS



**Builder:** [Ocean Yachts](#)

**Year Built:** 2006

**Model:** Sport Fisherman

**Price:** PRICE ON APPLICATION

**Location:** United States

**LOA:** 57' 0" (17.37m)

**Beam:** 16' 10" (5.13m)

**Min Draft:** 4' 10" (1.47m)

**Cruise Speed:** 34 Kts. (39 MPH)

**Max Speed:** 39 Kts. (45 MPH)

Our experienced yacht broker, Andrey Shestakov, will help you choose and buy a yacht that best suits your needs **Conchtankrus — Ocean Yachts** from our catalogue. Presently, at Shestakov Yacht Sales Inc., we have a wide variety of yachts available on our sale's list. We also work in close contact with all the big yacht manufacturers from all over the world.

If you would like to buy a yacht **Conchtankrus — Ocean Yachts** or would like help answering any questions concerning purchasing, selling or chartering a yacht, please call **+1(954)274-4435**

# TABLE OF CONTENTS

---

TABLE OF CONTENTS	2
SPECIFICATIONS	5
Overview	5
Basic Information	5
Dimensions	5
Speed, Capacities and Weight	5
Accommodations	6
Hull and Deck Information	6
Engine Information	6
DETAILED INFORMATION	7
Features	7
Salon	8
Master Stateroom & Head	8
VIP Stateroom & Head	8
Guest Stateroom & Head	8
Galley/Dinette	9
Bridge Area	9
Companionway	9
Hull and Superstructure	9
Electrical, Mechanical and Equipment	10
Exclusions	11
Disclaimer	11
PHOTOS	12
Profile showing Transom	12
Salon	12
Salon	12
Salon	12
Salon looking to Galley	12

Galley/Dinette	12
Galley	13
Galley	13
Companionway	13
Galley	13
Companionway	14
Master Stateroom	14
Master Stateroom	14
Master Stateroom	14
Master EnSuite	15
Master EnSuite	15
Master EnSuite	15
VIP Stateroom	15
VIP Stateroom	16
VIP Stateroom	16
VIP Ensuite	16
Guest Stateroom	16
Guest EnSuite	16
Guest EnSuite	16
Bridge	17
Bridge	17
Bridge Seating	17
Bridge Seating	17
Bridge Electronics	17
Bridge Electronics	17
Aft Deck	18
Aft Deck	18
CONTACTS	19
Contact details	19

---

Telephones	19
Office hours	19
Address	19

---

# SPECIFICATIONS

---

## Overview

---

"Live-aboard luxury with a light and airy interior and creature comforts found throughout" is the legacy behind Ocean Yachts. Awarded with the best use of interior space of any brand in the fishing convertible category, **Conchtankrus** offers the finest of a fully-equipped floating dream.

Ocean Yachts has implemented a strict quality-control program that starts in the molding shop and carries right through production to ensure quality at every stage. Today Ocean Yachts are the best-finished Oceans ever delivering a high-quality boat at a price that's better than the competition.

## Basic Information

---

**Category:** Sport Fisherman

**Model Year:** 2006

**Year Built:** 2006

**Country:** United States

**Vessel Top:** Hardtop

**Fly Bridge:** Yes

## Dimensions

---

**LOA:** 57' 0" (17.37m)

**Beam:** 16' 10" (5.13m)

**Min Draft:** 4' 10" (1.47m)

**Clearance:** 17' 5" (5.31m)

## Speed, Capacities and Weight

---

**Cruise Speed:** 34 Kts. (39 MPH)

**Max Speed:** 39 Kts. (45 MPH)

**Displacement:** 66269 Pounds

**Water Capacity:** 200 Gallons

**Fuel Capacity:** 1047 Gallons

---

## Accommodations

---

**Total Cabins:** 3

**Total Berths:** 4

**Total Heads:** 3

---

## Hull and Deck Information

---

**Hull Material:** Fiberglass

---

## Engine Information

---

**Engines:** 2

**Manufacturer:** MTU

**Model:** 12v2000

**Engine Type:** Inboard

**Fuel Type:** Diesel

---

# DETAILED INFORMATION

---

## Features

---

### Electronics

- Depthsounder
- Radar
- Log-Speedometer
- Radar Detector
- Wind Speed and Direction
- Computer
- Repeater(s)
- TV Set - with Satellite TV
- Navigation Center
- VCR
- Plotter
- DVD Player
- Autopilot
- Radio
- Compass
- CD Player
- GPS
- Cockpit Speakers
- VHF

### Inside Equipment

- Dishwasher
- Bow Thruster
- Washing Machine
- Electric Bilge Pump
- Microwave Oven
- Air Conditioning
- Electric Head
- Heating
- Hot Water
- Refrigerator
- Fresh Water Maker
- Sea Water Pump
- Battery Charger

### Electrical Equipment

- Shore Power Inlet - 2 - 50 Amps with auto retrieve

- Generator

#### Outside Equipment/Extras

- Teak Sidedecks
- Cockpit Table - with Pompanette chairs

---

## Salon

---

The carpeted Salon offers luxurious L-shaped seating to give your guests a spacious and comfortable inside lounging area and is enhanced with a designer side-chair and cocktail table with storage. She also has canvas carpet covers and runners for Salon and companionway and silhouette blinds.

The entertainment systems includes a pop up LCD flat screen TV and a Bose AM/FM/CD stereo system. Lighting is 24V & 110V.

For ease of comfort and maintenance, zoned air conditioning with reverse cycle heating is also and a Central Vacuuming system are both features in the Salon.

---

## Master Stateroom & Head

---

The Master Stateroom is aft-ship and offers a large, carpeted berth with spacious storage. Two nightstands, a full-length mirror, headliner, drawers and overhead cabinets & hanging lockers are all features offered in her Master. The entertainment system includes a flat screen TV with DVD player and AM/FM/CD stereo system.

Private access to Master Ensuite which is equipped with a stand up shower, new fixtures, automatic enclosed sump pump, VacuFlush heads, Amtico flooring, towel bars, an exhaust fan, and overhead lightning. It has a high gloss cherry finished vanity with Corian counter tops and an under mount sink, and a mirrored medicine cabinet.

---

## VIP Stateroom & Head

---

The VIP Stateroom is forward and has two nightstands and ample storage in the many drawers and in the overhead and hanging lockers. It has separate A/C & heat controls, a flat screen TV/DVD with remote control, and a full-length mirror.

Private head access with high-gloss cherry vanity, stand up shower, new fixtures, towel bars and with a medicine cabinet mirror.

---

## Guest Stateroom & Head

---



---

The carpeted Guest Stateroom is mid-ship and offers twin berths with drawer storage. Overhead cabinets and a standing locker offer additional storage. The entertainment systems includes a flat screen TV/DVD with remote control.

The Guest EnSuite is accessed from the Companionway and offers a high gloss cherry finish vanity with new fixtures and Corian counter tops.

---

## Galley/Dinette

---

The galley is spacious and offers ample counter space and under-counter, drawer-style sub-zero refrigeration and freezer. She has Corian counter tops and an under mount sink with a garbage disposal. A built in Convection/Microwave oven behind a sliding door and spacious drawers and cabinets maximize storage capabilities. Also featured are an Instant hot water faucet, trash compactor, Amtico flooring, and a glass top cooking surface with a Corian protective cover.

The adjacent booth-style dinette is larger than most like-same convertibles this size on the market. The accommodation space benefits from a step in the galley sole. With a high-gloss adjustable table this space offers your family and friends a cozy and comfortable place to relax and enjoy a meal together.

---

## Bridge Area

---

Her bridge is efficient, comfortable and air conditioned so it is able to be fully enclosed. The pod-style helm is fitted with engine instrumentation under glass, a tournament-style wheel and cast aluminum single-lever controls interfaced with Glendinning electronics. Covered electronics bays are to port and starboard, as are hamper-style cabinets in the console for an electrical sub-panel and a radio. Screen for engine room, salon, and cockpit cameras. Drop-down panels in the factory hardtop accommodate a radio and electric teaser reels. Tournament-style helm and companion seating provide a comfortable view of the cockpit, and a U-shape lounge area with integral stowage is forward.

---

## Companionway

---

Carpeted stairs leading from forward down to the stateroom house the washing machine and dryer.

---

## Hull and Superstructure

---

The hull and superstructure are built in female tooling. Woven and stitched reinforcements are handlaid with polyester resin. Fiberglass stringers, and marine plywood bulkheads and web

frames support the bottom. Divinycell foam coring stiffens the hull sides, exterior decks and superstructure.

Under the cockpit and forward, fuel is carried in aluminum tanks that feed a day tank on center line in the engine room. The elimination of wing tanks makes servicing the outboard side of the engines easy.

Swim platform added in July, 2015

---

## Electrical, Mechanical and Equipment

---

### Electrical:

Genset with 195 hours; Heavy Duty Batteries (9/2015); Parallel system; 220V shore power; Glendenning cable master; 12V outlets; Engine synchronizers; SSB radio; Zinc Anodes; Water Maker 400 (7/2015)

### Mechanical:

Twin MTU 12V2000 engines; Bow Thruster; Fully sound & heat insulated engine room; Fuel filters; Engine hour meters; Alternators; External sea strainers; Automatic fire extinguisher system; Fiberglass mufflers; Blowers; SS Rudders; Trim Tabs; Electric oil exchange system; Fuel shut off valves; Seacocks; 4 Automatic Bilge pumps; Fuel gauges; Engine alarms; New raw water hoses (7/2015); Full Engine Service completed (7/2015).

### Deck & Cockpit & Flybridge Equipment:

#### Main Deck

Anchor w/chain & line; Air horns; Fire extinguishers; Fire & smoke detectors; Life jackets; Aluminum bow rail; Aluminum bridge rail w/ladder; Bow pulpit; 2 stern cleats; 2 bow cleats; 4 springline cleats; Forward deck hatch; Bow thruster; Windlass; 2 Underwater transom lights

#### Cockpit

4 Rod holders; Cockpit side lockers; Boarding step box; Insulated fish box; Tackle locker; Transom door; Seawater & freshwater washdown; Bait center with freezer, sink and fresh water; Transom live well; New cockpit cover/shade; Coverboards refinished 7/2015

#### Flybridge

Spreader lights; Teaser reel radio box with teaser reels in hardtop; Rybo handles; Single lever controls; Air conditioned fly bridge with full enclosure.

---

## Exclusions

---

Owner's personal belongings.

---

## Disclaimer

---

The Company offers the details of this vessel or yacht in good faith but cannot guarantee or warrant the accuracy of this information nor warrant the condition of the vessel. A buyer should instruct his representatives, agents, or his surveyors, to investigate such details as the buyer desires validated. This vessel or yacht is offered subject to prior sale, price change, or withdrawal without notice.

# PHOTOS

**Profile showing Transom**



**Salon**



**Salon**



**Salon**



**Salon looking to Galley**



**Galley/Dinette**



**Galley**



**Galley**



**Galley**



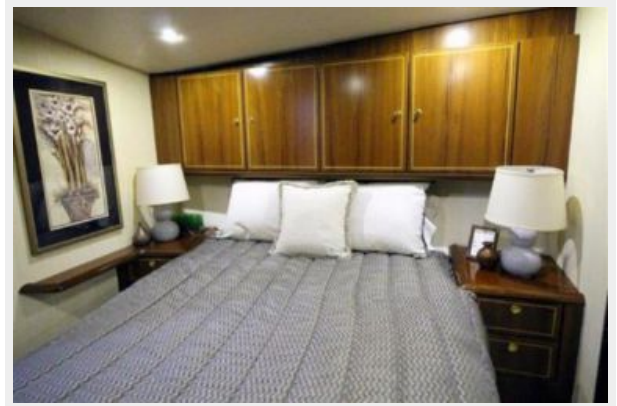
**Companionway**



**Companionway**



**Master Stateroom**



**Master Stateroom**



**Master Stateroom**



**Master EnSuite**



**Master EnSuite**



**Master EnSuite**



**VIP Stateroom**



**VIP Stateroom**



**VIP Stateroom**



**VIP Ensuite**



**Guest Stateroom**



**Guest EnSuite**



**Guest EnSuite**





**Bridge**



**Bridge**



**Bridge Seating**



**Bridge Seating**



**Bridge Electronics**



**Bridge Electronics**



**Aft Deck**



**Aft Deck**



---

# CONTACTS

---

Andrey Shestakov, leading yacht broker of the sales department of Shestakov Yacht Sales Inc. Shestakov Yacht Sales Inc., the official representative of the Miami/Fort Lauderdale FL headquarters.

---

## Contact details

---

Email: [andrey@shestakovyachtsales.com](mailto:andrey@shestakovyachtsales.com)

Web: [shestakovyachtsales.com/en/](http://shestakovyachtsales.com/en/)

---

## Telephones

---

USA: +1(954)274-4435

---

## Office hours

---

Monday – Saturday: **9:00 - 21:00** EDT

Sunday: **closed**

---

## Address

---



Harbour Towne Marina, 850 NE 3rd St,  
STE 213, Dania, FL 33004