

CONCHTANKRUS — OCEAN YACHTS



Судостроитель: [Ocean Yachts](#)

Год постройки: 2006

Модель: Катер для спортивной рыбалки

Цена: **ЦЕНА ЯХТЫ ПО ЗАПРОСУ**

Местонахождение: United States

Длина общая: 57' 0" (17.37m)

Ширина: 16' 10" (5.13m)

Мин. осадка: 4' 10" (1.47m)

Крейс. скорость: 34 Kts. (39 MPH)

Макс. скорость: 39 Kts. (45 MPH)

Купить Conchtankrus — Ocean Yachts а также выбрать подходящую вам яхту из нашего каталога яхт вам поможет опытный яхтенный брокер Андрей Шестаков. На сегодняшний день компания Shestakov Yacht Sales Inc. имеет большое количество яхт в собственном списке продаж, а также тесно сотрудничает со всеми крупными яхтенными производителями по всему миру.

Для того чтобы купить яхту Conchtankrus — Ocean Yachts а также проконсультироваться по любому вопросу связанному с покупкой, продажей, чартером яхт позвоните по телефону **+7(918)465-66-44**.

ОГЛАВЛЕНИЕ

ОГЛАВЛЕНИЕ	2
ХАРАКТЕРИСТИКИ	5
Обзор	5
Основная информация	5
Размеры	5
Скорость, вместимость и масса	5
Размещение	6
Корпус и палуба	6
Информация о двигателе	6
ПОДРОБНОЕ ОПИСАНИЕ	7
Features	7
Salon	8
Master Stateroom & Head	8
VIP Stateroom & Head	8
Guest Stateroom & Head	8
Galley/Dinette	9
Bridge Area	9
Companionway	9
Hull and Superstructure	9
Electrical, Mechanical and Equipment	10
Исключения	11
Отказ от ответственности	11
ФОТОГРАФИИ	12
Profile showing Transom	12
Salon	12
Salon	12
Salon	12
Salon looking to Galley	12

Galley/Dinette	12
Galley	13
Galley	13
Companionway	13
Galley	13
Companionway	14
Master Stateroom	14
Master Stateroom	14
Master Stateroom	14
Master EnSuite	15
Master EnSuite	15
Master EnSuite	15
VIP Stateroom	15
VIP Stateroom	16
VIP Stateroom	16
VIP Ensuite	16
Guest Stateroom	16
Guest EnSuite	16
Guest EnSuite	16
Bridge	17
Bridge	17
Bridge Seating	17
Bridge Seating	17
Bridge Electronics	17
Bridge Electronics	17
Aft Deck	18
Aft Deck	18
КОНТАКТЫ	19
Контактная информация	19

Телефоны	19
Время работы	19
Адрес	19

ХАРАКТЕРИСТИКИ

Обзор

"Live-aboard luxury with a light and airy interior and creature comforts found throughout" is the legacy behind Ocean Yachts. Awarded with the best use of interior space of any brand in the fishing convertible category, **Conchtankrus** offers the finest of a fully-equipped floating dream.

Ocean Yachts has implemented a strict quality-control program that starts in the molding shop and carries right through production to ensure quality at every stage. Today Ocean Yachts are the best-finished Oceans ever delivering a high-quality boat at a price that's better than the competition.

Основная информация

Тип судна: Катер для спортивной рыбалки

Модельный год: 2006

Год постройки: 2006

Страна: United States

Верх: Hardtop

Открытая палуба мостика: Да

Размеры

Длина общая: 57' 0" (17.37m)

Ширина: 16' 10" (5.13m)

Мин. осадка: 4' 10" (1.47m)

Трапы: 17' 5" (5.31m)

Скорость, вместимость и масса

Крейс. скорость: 34 Kts. (39 MPH)

Макс. скорость: 39 Kts. (45 MPH)

Водоизмещение: 66269 Pounds

Вместимость воды: 200 Gallons

Объем топливного бака: 1047 Gallons

Размещение

Всего кают: 3

Всего коек: 4

Всего ком. состава: 3

Корпус и палуба

Материал корпуса: Fiberglass

Информация о двигателе

Двигатели: 2

Производитель: MTU

Модель: 12v2000

Тип двигателя: Inboard

Тип топлива: Diesel

ПОДРОБНОЕ ОПИСАНИЕ

Features

Electronics

- Depthsounder
- Radar
- Log-Speedometer
- Radar Detector
- Wind Speed and Direction
- Computer
- Repeater(s)
- TV Set - with Satellite TV
- Navigation Center
- VCR
- Plotter
- DVD Player
- Autopilot
- Radio
- Compass
- CD Player
- GPS
- Cockpit Speakers
- VHF

Inside Equipment

- Dishwasher
- Bow Thruster
- Washing Machine
- Electric Bilge Pump
- Microwave Oven
- Air Conditioning
- Electric Head
- Heating
- Hot Water
- Refrigerator
- Fresh Water Maker
- Sea Water Pump
- Battery Charger

Electrical Equipment

- Shore Power Inlet - 2 - 50 Amps with auto retrieve

- Generator

Outside Equipment/Extras

- Teak Sidedecks
- Cockpit Table - with Pompanette chairs

Salon

The carpeted Salon offers luxurious L-shaped seating to give your guests a spacious and comfortable inside lounging area and is enhanced with a designer side-chair and cocktail table with storage. She also has canvas carpet covers and runners for Salon and companionway and silhouette blinds.

The entertainment systems includes a pop up LCD flat screen TV and a Bose AM/FM/CD stereo system. Lighting is 24V & 110V.

For ease of comfort and maintenance, zoned air conditioning with reverse cycle heating is also and a Central Vacuuming system are both features in the Salon.

Master Stateroom & Head

The Master Stateroom is aft-ship and offers a large, carpeted berth with spacious storage. Two nightstands, a full-length mirror, headliner, drawers and overhead cabinets & hanging lockers are all features offered in her Master. The entertainment system includes a flat screen TV with DVD player and AM/FM/CD stereo system.

Private access to Master Ensuite which is equipped with a stand up shower, new fixtures, automatic enclosed sump pump, VacuFlush heads, Amtico flooring, towel bars, an exhaust fan, and overhead lightning. It has a high gloss cherry finished vanity with Corian counter tops and an under mount sink, and a mirrored medicine cabinet.

VIP Stateroom & Head

The VIP Stateroom is forward and has two nightstands and ample storage in the many drawers and in the overhead and hanging lockers. It has separate A/C & heat controls, a flat screen TV/DVD with remote control, and a full-length mirror.

Private head access with high-gloss cherry vanity, stand up shower, new fixtures, towel bars and with a medicine cabinet mirror.

Guest Stateroom & Head

The carpeted Guest Stateroom is mid-ship and offers twin berths with drawer storage. Overhead cabinets and a standing locker offer additional storage. The entertainment systems includes a flat screen TV/DVD with remote control.

The Guest EnSuite is accessed from the Companionway and offers a high gloss cherry finish vanity with new fixtures and Corian counter tops.

Galley/Dinette

The galley is spacious and offers ample counter space and under-counter, drawer-style sub-zero refrigeration and freezer. She has Corian counter tops and an under mount sink with a garbage disposal. A built in Convection/Microwave oven behind a sliding door and spacious drawers and cabinets maximize storage capabilities. Also featured are an Instant hot water faucet, trash compactor, Amtico flooring, and a glass top cooking surface with a Corian protective cover.

The adjacent booth-style dinette is larger than most like-same convertibles this size on the market. The accommodation space benefits from a step in the galley sole. With a high-gloss adjustable table this space offers your family and friends a cozy and comfortable place to relax and enjoy a meal together.

Bridge Area

Her bridge is efficient, comfortable and air conditioned so it is able to be fully enclosed. The pod-style helm is fitted with engine instrumentation under glass, a tournament-style wheel and cast aluminum single-lever controls interfaced with Glendinning electronics. Covered electronics bays are to port and starboard, as are hamper-style cabinets in the console for an electrical sub-panel and a radio. Screen for engine room, salon, and cockpit cameras. Drop-down panels in the factory hardtop accommodate a radio and electric teaser reels. Tournament-style helm and companion seating provide a comfortable view of the cockpit, and a U-shape lounge area with integral stowage is forward.

Companionway

Carpeted stairs leading from forward down to the stateroom house the washing machine and dryer.

Hull and Superstructure

The hull and superstructure are built in female tooling. Woven and stitched reinforcements are handlaid with polyester resin. Fiberglass stringers, and marine plywood bulkheads and web

frames support the bottom. Divinycell foam coring stiffens the hull sides, exterior decks and superstructure.

Under the cockpit and forward, fuel is carried in aluminum tanks that feed a day tank on center line in the engine room. The elimination of wing tanks makes servicing the outboard side of the engines easy.

Swim platform added in July, 2015

Electrical, Mechanical and Equipment

Electrical:

Genset with 195 hours; Heavy Duty Batteries (9/2015); Parallel system; 220V shore power; Glendenning cable master; 12V outlets; Engine synchronizers; SSB radio; Zinc Anodes; Water Maker 400 (7/2015)

Mechanical:

Twin MTU 12V2000 engines; Bow Thruster; Fully sound & heat insulated engine room; Fuel filters; Engine hour meters; Alternators; External sea strainers; Automatic fire extinguisher system; Fiberglass mufflers; Blowers; SS Rudders; Trim Tabs; Electric oil exchange system; Fuel shut off valves; Seacocks; 4 Automatic Bilge pumps; Fuel gauges; Engine alarms; New raw water hoses (7/2015); Full Engine Service completed (7/2015).

Deck & Cockpit & Flybridge Equipment:

Main Deck

Anchor w/chain & line; Air horns; Fire extinguishers; Fire & smoke detectors; Life jackets; Aluminum bow rail; Aluminum bridge rail w/ladder; Bow pulpit; 2 stern cleats; 2 bow cleats; 4 springline cleats; Forward deck hatch; Bow thruster; Windlass; 2 Underwater transom lights

Cockpit

4 Rod holders; Cockpit side lockers; Boarding step box; Insulated fish box; Tackle locker; Transom door; Seawater & freshwater washdown; Bait center with freezer, sink and fresh water; Transom live well; New cockpit cover/shade; Coverboards refinished 7/2015

Flybridge

Spreader lights; Teaser reel radio box with teaser reels in hardtop; Rybo handles; Single lever controls; Air conditioned fly bridge with full enclosure.

Исключения

При продаже яхты исключаются личные вещи владельца.

Отказ от ответственности

Компания предоставляет описание судна или яхты добросовестно, но не может гарантировать точность этой информации, а также не ручается за техническое состояние. Покупатель должен проинструктировать своих агентов или оценщиков исследовать представленную информацию более подробно, по собственному желанию. Продажа судна или яхты, изменение цены или снятие с продажи будет происходить без предварительного уведомления.

ФОТОГРАФИИ

Profile showing Transom



Salon



Salon



Salon



Salon looking to Galley



Galley/Dinette



Galley



Galley



Galley



Companionway



Companionway



Master Stateroom



Master Stateroom



Master Stateroom



Master EnSuite



Master EnSuite



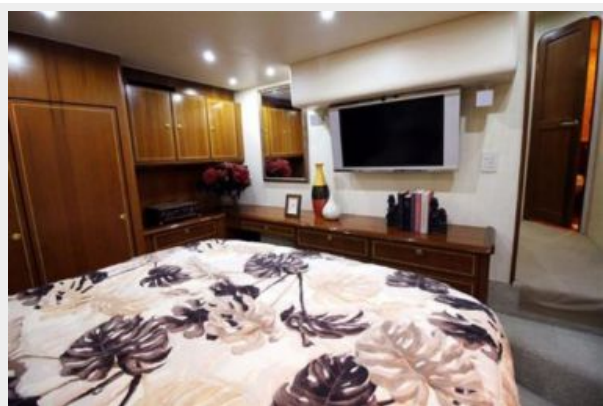
Master EnSuite



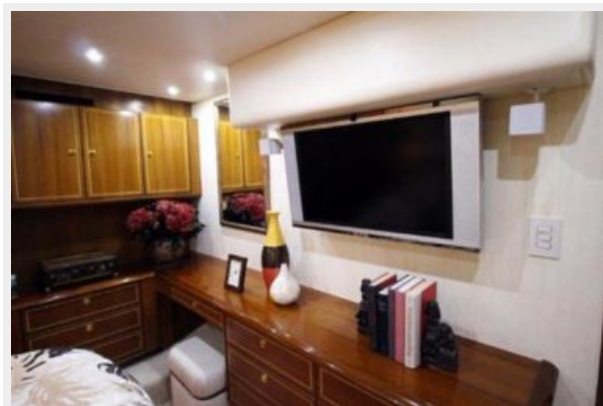
VIP Stateroom



VIP Stateroom



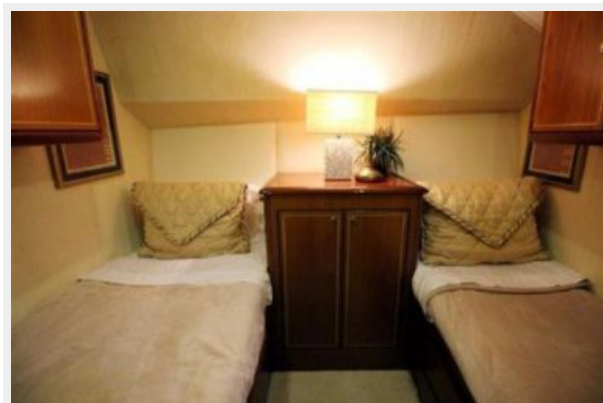
VIP Stateroom



VIP Ensuite



Guest Stateroom



Guest EnSuite



Guest EnSuite



Bridge



Bridge



Bridge Seating



Bridge Seating



Bridge Electronics



Bridge Electronics



Aft Deck



Aft Deck



КОНТАКТЫ

Андрей Шестаков (Andrey Shestakov) – ведущий яхтенный брокер отдела продаж яхт и судов компании Shestakov Yacht Sales Inc. Официальный представитель Shestakov Yacht Sales Inc. для русскоговорящих клиентов в центральном офисе компании в Майами/Форт Лодердейл/Флорида/США.

Контактная информация

Email: andrey@shestakovyachtsales.com

Web: shestakovyachtsales.com

Телефоны

Краснодарский край: **+7(918)465-66-44**

США, Майами, Флорида: **+1(954)274-4435**

Время работы

Понедельник – Суббота: **9:00 - 21:00**
EDT

Воскресенье: **Закрито**

Адрес



Harbour Towne Marina, 850 NE 3rd St,
STE 213, Dania, FL 33004