

SENTRY — HATTERAS



Builder: HATTERAS

Year Built: 1977

Model: Motor Yacht

Price: PRICE ON APPLICATION

Location: United States

LOA: 70' 0" (21.34m)

Beam: 18' 7" (5.66m)

Min Draft: 6' 0" (1.83m)

Max Draft: 6' 0" (1.83m)

Cruise Speed: 18 Kts. (21 MPH)

Max Speed: 23 Kts. (26 MPH)

Our experienced yacht broker, Andrey Shestakov, will help you choose and buy a yacht that best suits your needs **SENTRY — HATTERAS** from our catalogue. Presently, at Shestakov Yacht Sales Inc., we have a wide variety of yachts available on our sale's list. We also work in close contact with all the big yacht manufacturers from all over the world.

If you would like to buy a yacht **SENTRY — HATTERAS** or would like help answering any questions concerning purchasing, selling or chartering a yacht, please call **+1(954)274-4435**

TABLE OF CONTENTS

TABLE OF CONTENTS	2
SPECIFICATIONS	6
Overview	6
Basic Information	6
Dimensions	6
Speed, Capacities and Weight	7
Accommodations	7
Hull and Deck Information	7
Engine Information	7
DETAILED INFORMATION	8
Accommodations and Walk Through	8
Galley	8
Crew Quarters	9
Navigation Electronics & Equipment	9
Electrical	10
Engines & Mechanical	10
Deck Equipment	11
Flybridge	11
Aft Cockpit	12
Safety & Fire Protection	12
Additional Equipment	12
Engine Hours Disclaimer	12
Exclusions	12
Disclaimer	13
PHOTOS	14
Starboard Bow Profile	14
Aft Starboard Profile	14
Tender	14

Foredeck	14
Port outside passageway to bow	14
Cockpit	14
Foredeck to aft	15
Raised Enclosed Aft Deck	15
Tender	15
Flybridge Hardtop and Spotlight	15
Wheelhouse forward	15
Wheelhouse to port	15
Galley	16
Dining Room	16
Galley	16
Galley Dinette/Office	16
Saloon forward	16
Saloon aft	16
Guest Stateroom-1	17
Master Stateroom	17
MSR with door to Cockpit	17
Master Stateroom	17
Head, Shower	17
Guest Stateroom-2	17
Saloon to aft	18
Saloon to starboard, forward	18
Engine room	18
Engine room	18
Engine room	18
Engine room	18
Aft Flybridge	19
Hatch in Flybridge Hardtop	19

Flybridge with Aft Fishing/Trolling Full Controls	19
Hardtop to port	19
Fenders/holders at Bow	19
Flybridge forward	19
Ground Tackle	20
Cabin & Wheelhouse Profile	20
Stern Profile	20
Swim Platform, Transom Door to Cockpit	20
Aft Cockpit	20
Side Boarding Ladder	20
Cutwater	21
Portside Deck	21
Well lit at night	21
Crew Head	21
Crew Dinette	21
Crew Dinette converts to berth	21
Crew TV	22
Crew Shower	22
Crew Berth	22
Crew Berth	22
Galley	22
Galley	22
Laundry, Office/Dinette - opposite Galley	23
Wheelhouse Pilot's Seating/Berth	23
Wheelhouse Helm Station	23
Stairs to Flybridge from Wheelhouse	23
Saloon to aft, starboard	23
Staircase to Staterooms from Saloon	23
"L" sofa in Saloon	24

Doorway from Saloon to Wheelhouse	24
Icemaker and Wet Bar in Saloon	24
Raised Aft Deck at night	24
Engine Room	25
Engine Room	25
Racor Switchable Filters	25
Tender and Hoist	25
Tender stowed on Flybridge deck	25
View underway from Aft Deck	26
Plenty of room for guests!	26
Marquipt TideRide boarding stairs	26
View underway from Flybridge	26
CONTACTS	27
Contact details	27
Telephones	27
Office hours	27
Address	27

SPECIFICATIONS

Overview

SENTRY is an excellent example of this impressive factory 70' Hatteras Cockpit Motoryacht - the layout features a full-width owner's stateroom aft with ensuite Head and Shower, and two guest doubles, each with separate head and shower. Crew accommodations for 2-3 with double berths (one double berth is a convertible Crew dinette) located forward of down Galley, a layout that offers great privacy for Crew, as well as Owners and Guests.

There is a spacious Wheelhouse, a large Dining Room, a well-appointed Galley, an Eisenglass-enclosed Aft Deck, and an open Aft Cockpit. Also, the huge Flybridge offers an entertainment area, with L-shaped and bench settees, and dinghy crane/hoist, cradle. A magnificent example of this classic profile, the Hatteras 70 CPMY will turn heads in any corner of the world where you may choose to cruise. Of the thirty 70' Hatteras's built, 28 were full flush deck models and two were Cockpit Motoryachts, so SENTRY is very unique. Her running gear is located further aft than if she were an aftermarket cockpit add-on, so she handles much better. And, her modern CAT C-18s, with warranty until 11/20/18, give her tremendous appeal to the owner who wants state-of-the-art power plants.

Basic Information

Category: Motor Yacht	Sub Category: Cockpit
Model Year: 1977	Year Built: 1977
Country: United States	Vessel Top: Hardtop
Fly Bridge: Yes	Cockpit: Yes

Dimensions

LOA: 70' 0" (21.34m)	LOD: 70' 0" (21.34m)
Beam: 18' 7" (5.66m)	Min Draft: 6' 0" (1.83m)
Max Draft: 6' 0" (1.83m)	Clearance: 27' 2" (8.28m)

Speed, Capacities and Weight

Cruise Speed: 18 Kts. (21 MPH)

Cruise Speed RPM: 1900 Kts.

Max Speed: 23 Kts. (26 MPH)

Water Capacity: 400 Gallons

Holding Tank: 100 Gallons

Fuel Capacity: 1590 Gallons

Accommodations

Total Cabins: 3

Total Heads: 3

Crew Cabin: 1

Crew Heads: 1

Hull and Deck Information

Hull Material: Fiberglass

Hull Configuration: Monohull

Engine Information

Engines: 2

Manufacturer: Caterpillar

Model: CAT C-18

Engine Type: Inboard

Fuel Type: Diesel

DETAILED INFORMATION

Accommodations and Walk Through

The Eisinglass enclosed Aft Deck offers comfortable seating for eight. Steps on the starboard aft side lead down to the well-designed factory Cockpit, lazarette with two hatches, BBQ station, and transom door and gate leading out to the swim platform. Port and starboard hard wing doors lead to side decks up to the forward deck. The Saloon is entered through two varnished swing doors forward of the Aft Deck.

The Saloon is appointed with a light brown/blue speckled fabric L-shaped sofa portside and forward. There is a glass top coffee table, and two brown and blue striped fabric chairs and ottomans with beige carpeting. Aft is a custom elevated entertainment center and full wet bar with ice-maker. There is a curved stairway down to the Staterooms at the aft portside of the Saloon.

Forward of the Saloon is the Wheelhouse with full lower steering station and electronics. Forward of the Wheelhouse is a Dining Room with a large wood dining table, three chairs and banquette "L" shaped seating, all beneath a custom chandelier and immediately forward of the mirrored bulkhead. The U-shaped Galley is down and forward to port, with lots of cabinets and all necessary appliances, and is opposite a small office/dinette and laundry area.

Forward of the down-Galley, are the "Crew's Quarters" with a double berth, convertible dinette, and a private Head with stall Shower and lots of Crew storage.

Aft portside of the Saloon, down curved stairs below decks, is the full beam Master Stateroom with a queen-sized bed on the centerline and a vanity, 27" TV and a cedar-lined closet to forward and starboard, and a hinged swing down single berth on starboard when needed. There's also an ensuite Head with shower to port with lots of cabinet and drawer storage. There is a full-size door leading to the aft cockpit for those moonlight swims.

Forward of the MSR, and to port and starboard, are the two Guest Staterooms, each with twin berths, mirrored bulkheads, ample storage and hanging lockers, and both with private Heads with showers.

Entrance to the Flybridge is from the Wheelhouse up a ladder. There are Pompanette helm and companion seats and cushioned Guest benches for 10-12 with storage beneath. The Boston Whaler tender and crane resides for and aft facing on the portside of this large flybridge. Aft in the Flybridge, overlooking the lower cockpit and the transom is a full steering and control station for docking the vessel.

Galley

Laundry has full size large capacity Whirlpool washer and dryer. The entranceway to the engine room is under the Galley stairs. There is lots of storage in drawers, cabinets and under-sole

lazarette in the Galley.

- GE Trash Compactor
- GE (4) burner electric stove top
- GE Oven
- GE Convection & Microwave Oven
- GE Dishwasher
- Amana Full-size Whirlpool Refrigerator / Freezer / Ice Maker
- Double Stainless Steel Sink with Disposal
- Coffee Maker
- Corian Countertops

Crew Quarters

Forward of the Galley, through a closed door is the large Crews Quarters. There is a convertible Dinette on starboard with six drawers of storage under seats. The table lowers and with filler cushions, makes a large single berth. On port is a double raised berth with four drawers and two huge lockers. To starboard, is a large closet. There is an overhead opening hatch and four opening portholes. The Head with vanity and separate shower is forward.

Navigation Electronics & Equipment

WHEELHOUSE

- Furuno Navnet VX2 (GPS, Plotter, Radar, Depth)
- Furuno 72-mile Radar
- Furuno RD30 Wind Speed
- Navigator Depth Finder
- Simrad AP25 Autopilot
- Richie Compass
- SEA 222 - single side band radio
- Garmin 7616 Touch Screen
- SEA 156 VHF
- Hailer
- Vetus Bow Thruster Control
- Naiad Stabilizer Controls
- Trim Tab Indicators (not working)
- Carlisle Dual Spotlight Control
- Richie Compass
- Triple Kalenberg Horn
- Remote CAT Engine Controls

FLYBRIDGE

- Garmin 7612 Touch
- Simrad AP27
- CAT Fly-by-Wire Throttle/Shifter Controls (?)
- CAT Monitor System
- NAV NET VX2 (GPS, Plotter, Radar, Depth)
- DataMarine Digital Depth
- DataMarine Speed/Distance
- Vetus Bow Thruster Control
- Naiad Stabilizer Controls (?)
- Carlisle Spotlight Control
- Standard Horizon VHF
- Triple Kalenberg Horn

Electrical

- 220/120 AC volt Power (panel in Wheelhouse)
- 240 volt Ships Service (panel in Wheelhouse)
- 24/12 volt DC Ships Service (panel in Wheelhouse)
- (2) Transformers (panel in Wheelhouse)
- (2) Phasor 21kW Generators - approx. 1251 hours / 1157 hours
- MagnaSine 4000w Inverter/Charger
- Magnum Energy Flow Monitor (panel in Wheelhouse)
- Batteries with parallel switch
- Charles 40amp Automatic/Manual battery charger
- (4) Inlets

Engines & Mechanical

- 2008 Twin CAT C-18 1015hp each **10-year Extended Warranty to November 2018**
- **10/2015 - Just had 1,000 service accomplished on engines to maintain warranty**
- Engine Hours - approx. 1172 each
- Economical - 3.+ gal per mile at 18 knots 1900 RPM
- Cruising Speed - 18 knots / 23 knots max.
- CAT Computer Monitor Screens
- Port SN: CKH03143 / Starboard SN: CKH03131
- 2008 ZF Transmissions 2.59:1
- Electronic Controls with Synchronizers (3 stations)
- Vetus Bow Thruster
- Naiad Stabilizers
- (6) A/C units
- (4) Switchable Racor 1000 Fuel Filters
- SeaRecovery Water Maker 50 GPH / 1,200 GPD (currently pickled)

- (2) 35.5" Nibral Props with Spares
- Spare 10' Stub Shaft

Deck Equipment

- 60# Danforth w/ 200' 1" rode
- 60# Bruce w/ 200' Chain
- 1,500 lb. Davit
- Ideal BBHW electric 110v windlass w/ remote
- 2007 15' Boston Whaler Center Console w/ 2012 75hp Evinrude ETEC OB
- 8-man Avon w/ EPIRB (needs recertification)
- Marquipt boarding ladder
- Tide Ride Steps
- Fiberglass Radar Arch
- Transom Shower
- Frigibar Fridge/Freezer - Flybridge
- Cockpit lazarette storage
- Swim platform with ladder
- Transom door with gate
- Bow Pulpit with rails
- Spray rails - full hull length
- Windshield washer and wipers
- Fresh water washdown - (3) Stations
- Custom FB and Foredeck covers
- Fenders and Lines
- (2) FBG Foredeck dunnage boxes with cushions
- Windshield Covers
- Varnished Name Boards
- (2) Carlisle 10" Spotlights

Flybridge

- Frigibar refrigerator/freezer with seating pad
- Seating for 10
- Solid weather boards
- Custom Carbon Fiber/Fiberglass Hardtop
- Fiberglass Arches
- Opening overhead Hatch - over Helm seat
- Aft facing Steering Station - Throttle/Shifter, Steering, Bow Thruster
- 12v overhead lights
- New Venturi custom windshield
- Freshwater washdown

Aft Cockpit

- Highly varnished teak cap rail
- (2) 50 amp shore cord input
- (2) SS cleats
- (2) Halse pipes
- Transom door
- Fiberglass swim platform
- Magma propane grill
- Doorway to Master Stateroom
- (4) Fishing rod holders
- Stairs to upper Aft Deck

Safety & Fire Protection

- Portable EPIRB in Wheelhouse
- Handheld EPIRB for Whaler (Tender)
- Fire Extinguishers - (3) Guest Cabins, (1) Crew
- FireBoy System - engine room (needs recert)
- 8-person Avon Liferaft w/EPIRB - Aft Cockpit (needs recertification)

Additional Equipment

- (3) Underwater Lights - Transom
- Tank Tenders
- Intercom System
- IceMaker - Main Saloon
- Wet Bar - Main Saloon

Engine Hours Disclaimer

Please note: Engine hours shown here are as of the original listing date and are an account of what the Listing Broker was told by the Owner and/or actual reading of the engine hour meters. The Broker cannot guarantee the accuracy of engine and/or genset hours. It is the responsibility of the Buyer and/or his Agent/Surveyor to verify engine/genset hours, as well as all other representations noted on the Listing Brochure.

Exclusions

Owner's personal belongings.

Disclaimer

The Company offers the details of this vessel or yacht in good faith but cannot guarantee or warrant the accuracy of this information nor warrant the condition of the vessel. A buyer should instruct his representatives, agents, or his surveyors, to investigate such details as the buyer desires validated. This vessel or yacht is offered subject to prior sale, price change, or withdrawal without notice.

PHOTOS

Starboard Bow Profile



Aft Starboard Profile



Tender



Foredeck



Port outside passageway to bow



Cockpit



Raised Enclosed Aft Deck



Foredeck to aft



Flybridge Hardtop and Spotlight



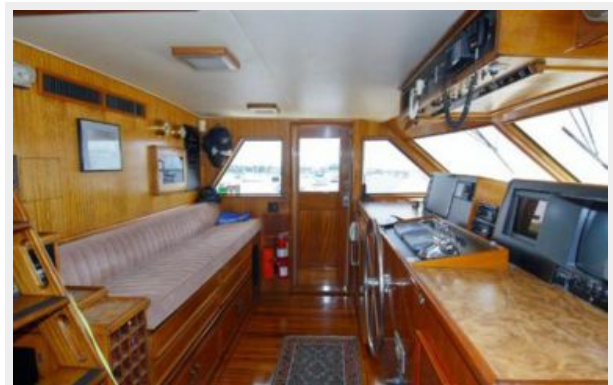
Tender



Wheelhouse forward



Wheelhouse to port



Dining Room



Galley



Galley



Galley Dinette/Office



Saloon aft



Saloon forward



Guest Stateroom-1



Master Stateroom



Master Stateroom



MSR with door to Cockpit



Head, Shower



Guest Stateroom-2



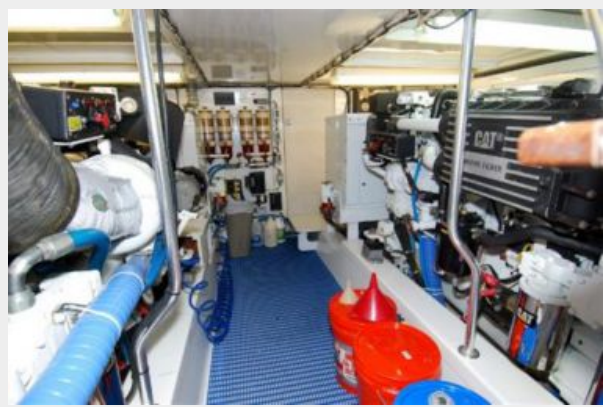
Saloon to starboard, forward



Saloon to aft



Engine room



Engine room



Engine room



Engine room



Aft Flybridge



Hatch in Flybridge Hardtop



Hardtop to port



Flybridge with Aft Fishing/Trolling Full Controls



Flybridge forward



Fenders/holders at Bow



Ground Tackle



Cabin & Wheelhouse Profile



Stern Profile



Swim Platform, Transom Door to Cockpit



Aft Cockpit



Side Boarding Ladder



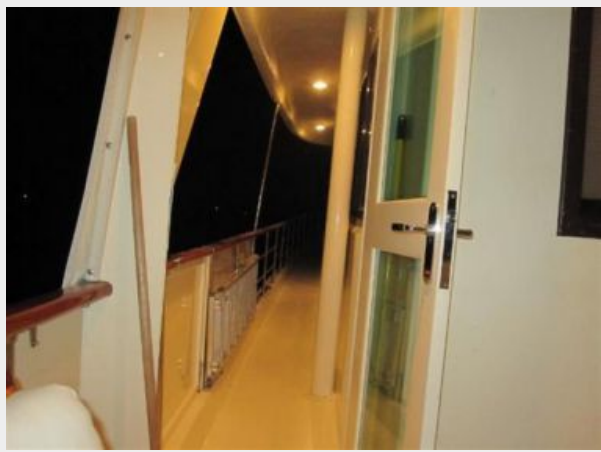
Cutwater



Portside Deck



Well lit at night



Crew Head



Crew Dinette converts to berth



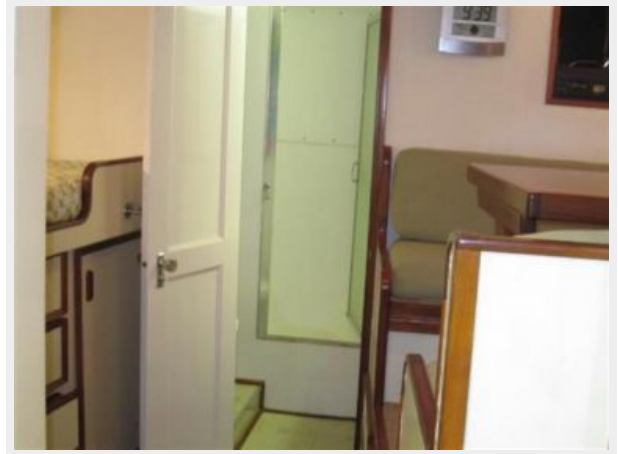
Crew Dinette



Crew TV



Crew Shower



Crew Berth



Crew Berth



Galley



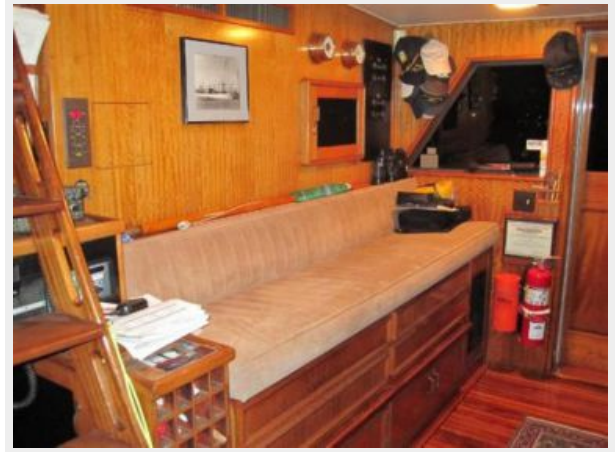
Galley



Laundry, Office/Dinette - opposite Galley



Wheelhouse Pilot's Seating/Berth



Wheelhouse Helm Station



Stairs to Flybridge from Wheelhouse



Saloon to aft, starboard



Staircase to Staterooms from Saloon



"L" sofa in Saloon



Doorway from Saloon to Wheelhouse



Icemaker and Wet Bar in Saloon



Raised Aft Deck at night



Engine Room



Engine Room



Racor Switchable Filters



Tender and Hoist



Tender stowed on Flybridge deck



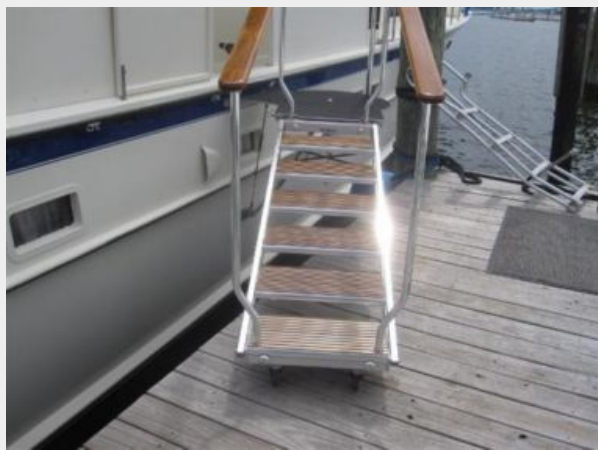
View underway from Aft Deck



Plenty of room for guests!



Marquipt TideRide boarding stairs



View underway from Flybridge



CONTACTS

Andrey Shestakov, leading yacht broker of the sales department of Shestakov Yacht Sales Inc. Shestakov Yacht Sales Inc., the official representative of the Miami/Fort Lauderdale FL headquarters.

Contact details

Email: andrey@shestakovyachtsales.com

Web: shestakovyachtsales.com/en/

Telephones

USA: +1(954)274-4435

Office hours

Monday – Saturday: **9:00 - 21:00** EDT

Sunday: **closed**

Address



Harbour Towne Marina, 850 NE 3rd St,
STE 213, Dania, FL 33004