

SENTRY — HATTERAS



Судостроитель: HATTERAS

Год постройки: 1977

Модель: Моторная яхта

Цена: **ЦЕНА ЯХТЫ ПО ЗАПРОСУ**

Местонахождение: United States

Длина общая: 70' 0" (21.34m)

Ширина: 18' 7" (5.66m)

Мин. осадка: 6' 0" (1.83m)

Макс. осадка: 6' 0" (1.83m)

Крейс. скорость: 18 Kts. (21 MPH)

Макс. скорость: 23 Kts. (26 MPH)

Купить **SENTRY — HATTERAS** а также выбрать подходящую вам яхту из нашего каталога яхт вам поможет опытный яхтенный брокер Андрей Шестаков. На сегодняшний день компания **Shestakov Yacht Sales Inc.** имеет большое количество яхт в собственном списке продаж, а также тесно сотрудничает со всеми крупными яхтенными производителями по всему миру.

Для того чтобы купить яхту **SENTRY — HATTERAS** а также проконсультироваться по любому вопросу связанному с покупкой, продажей, чартером яхт позвоните по телефону **+7(918)465-66-44**.

ОГЛАВЛЕНИЕ

| | |
|------------------------------------|----|
| ОГЛАВЛЕНИЕ | 2 |
| ХАРАКТЕРИСТИКИ | 6 |
| Обзор | 6 |
| Основная информация | 6 |
| Размеры | 6 |
| Скорость, вместимость и масса | 7 |
| Размещение | 7 |
| Корпус и палуба | 7 |
| Информация о двигателе | 7 |
| ПОДРОБНОЕ ОПИСАНИЕ | 8 |
| Accommodations and Walk Through | 8 |
| Galley | 8 |
| Crew Quarters | 9 |
| Navigation Electronics & Equipment | 9 |
| Electrical | 10 |
| Engines & Mechanical | 10 |
| Deck Equipment | 11 |
| Flybridge | 11 |
| Aft Cockpit | 12 |
| Safety & Fire Protection | 12 |
| Additional Equipment | 12 |
| Engine Hours Disclaimer | 12 |
| Исключения | 12 |
| Отказ от ответственности | 13 |
| ФОТОГРАФИИ | 14 |
| Starboard Bow Profile | 14 |
| Aft Starboard Profile | 14 |
| Tender | 14 |

| | |
|---------------------------------|----|
| Foredeck | 14 |
| Port outside passageway to bow | 14 |
| Cockpit | 14 |
| Foredeck to aft | 15 |
| Raised Enclosed Aft Deck | 15 |
| Tender | 15 |
| Flybridge Hardtop and Spotlight | 15 |
| Wheelhouse forward | 15 |
| Wheelhouse to port | 15 |
| Galley | 16 |
| Dining Room | 16 |
| Galley | 16 |
| Galley Dinette/Office | 16 |
| Saloon forward | 16 |
| Saloon aft | 16 |
| Guest Stateroom-1 | 17 |
| Master Stateroom | 17 |
| MSR with door to Cockpit | 17 |
| Master Stateroom | 17 |
| Head, Shower | 17 |
| Guest Stateroom-2 | 17 |
| Saloon to aft | 18 |
| Saloon to starboard, forward | 18 |
| Engine room | 18 |
| Engine room | 18 |
| Engine room | 18 |
| Engine room | 18 |
| Aft Flybridge | 19 |
| Hatch in Flybridge Hardtop | 19 |

| | |
|---|----|
| Flybridge with Aft Fishing/Trolling Full Controls | 19 |
| Hardtop to port | 19 |
| Fenders/holders at Bow | 19 |
| Flybridge forward | 19 |
| Ground Tackle | 20 |
| Cabin & Wheelhouse Profile | 20 |
| Stern Profile | 20 |
| Swim Platform, Transom Door to Cockpit | 20 |
| Aft Cockpit | 20 |
| Side Boarding Ladder | 20 |
| Cutwater | 21 |
| Portside Deck | 21 |
| Well lit at night | 21 |
| Crew Head | 21 |
| Crew Dinette | 21 |
| Crew Dinette converts to berth | 21 |
| Crew TV | 22 |
| Crew Shower | 22 |
| Crew Berth | 22 |
| Crew Berth | 22 |
| Galley | 22 |
| Galley | 22 |
| Laundry, Office/Dinette - opposite Galley | 23 |
| Wheelhouse Pilot's Seating/Berth | 23 |
| Wheelhouse Helm Station | 23 |
| Stairs to Flybridge from Wheelhouse | 23 |
| Saloon to aft, starboard | 23 |
| Staircase to Staterooms from Saloon | 23 |
| "L" sofa in Saloon | 24 |

| | |
|-----------------------------------|-----------|
| Doorway from Saloon to Wheelhouse | 24 |
| Icemaker and Wet Bar in Saloon | 24 |
| Raised Aft Deck at night | 24 |
| Engine Room | 25 |
| Engine Room | 25 |
| Racor Switchable Filters | 25 |
| Tender and Hoist | 25 |
| Tender stowed on Flybridge deck | 25 |
| View underway from Aft Deck | 26 |
| Plenty of room for guests! | 26 |
| Marquipt TideRide boarding stairs | 26 |
| View underway from Flybridge | 26 |
| КОНТАКТЫ | 27 |
| Контактная информация | 27 |
| Телефоны | 27 |
| Время работы | 27 |
| Адрес | 27 |

ХАРАКТЕРИСТИКИ

Обзор

SENTRY is an excellent example of this impressive factory 70' Hatteras Cockpit Motoryacht - the layout features a full-width owner's stateroom aft with ensuite Head and Shower, and two guest doubles, each with separate head and shower. Crew accommodations for 2-3 with double berths (one double berth is a convertible Crew dinette) located forward of down Galley, a layout that offers great privacy for Crew, as well as Owners and Guests.

There is a spacious Wheelhouse, a large Dining Room, a well-appointed Galley, an Eisenglass-enclosed Aft Deck, and an open Aft Cockpit. Also, the huge Flybridge offers an entertainment area, with L-shaped and bench settees, and dinghy crane/hoist, cradle. A magnificent example of this classic profile, the Hatteras 70 CPMY will turn heads in any corner of the world where you may choose to cruise. Of the thirty 70' Hatteras's built, 28 were full flush deck models and two were Cockpit Motoryachts, so SENTRY is very unique. Her running gear is located further aft than if she were an aftermarket cockpit add-on, so she handles much better. And, her modern CAT C-18s, with warranty until 11/20/18, give her tremendous appeal to the owner who wants state-of-the-art power plants.

Основная информация

Тип судна: Моторная яхта

Подкатегория: Кубрик

Модельный год: 1977

Год постройки: 1977

Страна: United States

Верх: Hardtop

Открытая палуба мостика: Да

Кубрик: Да

Размеры

Длина общая: 70' 0" (21.34m)

Длина палубы: 70' 0" (21.34m)

Ширина: 18' 7" (5.66m)

Мин. осадка: 6' 0" (1.83m)

Макс. осадка: 6' 0" (1.83m)

Трапы: 27' 2" (8.28m)

Скорость, вместимость и масса

Крейс. скорость: 18 Kts. (21 MPH)

Крейсерская скорость поворота: 1900 Kts.

Макс. скорость: 23 Kts. (26 MPH)

Вместимость воды: 400 Gallons

Вместимость сточного бака: 100 Gallons **Объем топливного бака:** 1590 Gallons

Размещение

Всего кают: 3

Всего ком. состава: 3

Каюты экипажа: 1

Комм. состав экипажа: 1

Корпус и палуба

Материал корпуса: Fiberglass

Комплектация корпуса: Monohull

Информация о двигателе

Двигатели: 2

Производитель: Caterpillar

Модель: CAT C-18

Тип двигателя: Inboard

Тип топлива: Diesel

ПОДРОБНОЕ ОПИСАНИЕ

Accommodations and Walk Through

The Eisinglass enclosed Aft Deck offers comfortable seating for eight. Steps on the starboard aft side lead down to the well-designed factory Cockpit, lazarette with two hatches, BBQ station, and transom door and gate leading out to the swim platform. Port and starboard hard wing doors lead to side decks up to the forward deck. The Saloon is entered through two varnished swing doors forward of the Aft Deck.

The Saloon is appointed with a light brown/blue speckled fabric L-shaped sofa portside and forward. There is a glass top coffee table, and two brown and blue striped fabric chairs and ottomans with beige carpeting. Aft is a custom elevated entertainment center and full wet bar with ice-maker. There is a curved stairway down to the Staterooms at the aft portside of the Saloon.

Forward of the Saloon is the Wheelhouse with full lower steering station and electronics. Forward of the Wheelhouse is a Dining Room with a large wood dining table, three chairs and banquette "L" shaped seating, all beneath a custom chandelier and immediately forward of the mirrored bulkhead. The U-shaped Galley is down and forward to port, with lots of cabinets and all necessary appliances, and is opposite a small office/dinette and laundry area.

Forward of the down-Galley, are the "Crew's Quarters" with a double berth, convertible dinette, and a private Head with stall Shower and lots of Crew storage.

Aft portside of the Saloon, down curved stairs below decks, is the full beam Master Stateroom with a queen-sized bed on the centerline and a vanity, 27" TV and a cedar-lined closet to forward and starboard, and a hinged swing down single berth on starboard when needed. There's also an ensuite Head with shower to port with lots of cabinet and drawer storage. There is a full-size door leading to the aft cockpit for those moonlight swims.

Forward of the MSR, and to port and starboard, are the two Guest Staterooms, each with twin berths, mirrored bulkheads, ample storage and hanging lockers, and both with private Heads with showers.

Entrance to the Flybridge is from the Wheelhouse up a ladder. There are Pompanette helm and companion seats and cushioned Guest benches for 10-12 with storage beneath. The Boston Whaler tender and crane resides for and aft facing on the portside of this large flybridge. Aft in the Flybridge, overlooking the lower cockpit and the transom is a full steering and control station for docking the vessel.

Galley

Laundry has full size large capacity Whirlpool washer and dryer. The entranceway to the engine room is under the Galley stairs. There is lots of storage in drawers, cabinets and under-sole

lazarette in the Galley.

- GE Trash Compactor
- GE (4) burner electric stove top
- GE Oven
- GE Convection & Microwave Oven
- GE Dishwasher
- Amana Full-size Whirlpool Refrigerator / Freezer / Ice Maker
- Double Stainless Steel Sink with Disposal
- Coffee Maker
- Corian Countertops

Crew Quarters

Forward of the Galley, through a closed door is the large Crews Quarters. There is a convertible Dinette on starboard with six drawers of storage under seats. The table lowers and with filler cushions, makes a large single berth. On port is a double raised berth with four drawers and two huge lockers. To starboard, is a large closet. There is an overhead opening hatch and four opening portholes. The Head with vanity and separate shower is forward.

Navigation Electronics & Equipment

WHEELHOUSE

- Furuno Navnet VX2 (GPS, Plotter, Radar, Depth)
- Furuno 72-mile Radar
- Furuno RD30 Wind Speed
- Navigator Depth Finder
- Simrad AP25 Autopilot
- Richie Compass
- SEA 222 - single side band radio
- Garmin 7616 Touch Screen
- SEA 156 VHF
- Hailer
- Vetus Bow Thruster Control
- Naiad Stabilizer Controls
- Trim Tab Indicators (not working)
- Carlisle Dual Spotlight Control
- Richie Compass
- Triple Kalenberg Horn
- Remote CAT Engine Controls

FLYBRIDGE

- Garmin 7612 Touch
- Simrad AP27
- CAT Fly-by-Wire Throttle/Shifter Controls (?)
- CAT Monitor System
- NAV NET VX2 (GPS, Plotter, Radar, Depth)
- DataMarine Digital Depth
- DataMarine Speed/Distance
- Vetus Bow Thruster Control
- Naiad Stabilizer Controls (?)
- Carlisle Spotlight Control
- Standard Horizon VHF
- Triple Kalenberg Horn

Electrical

- 220/120 AC volt Power (panel in Wheelhouse)
- 240 volt Ships Service (panel in Wheelhouse)
- 24/12 volt DC Ships Service (panel in Wheelhouse)
- (2) Transformers (panel in Wheelhouse)
- (2) Phasor 21kW Generators - approx. 1251 hours / 1157 hours
- MagnaSine 4000w Inverter/Charger
- Magnum Energy Flow Monitor (panel in Wheelhouse)
- Batteries with parallel switch
- Charles 40amp Automatic/Manual battery charger
- (4) Inlets

Engines & Mechanical

- 2008 Twin CAT C-18 1015hp each **10-year Extended Warranty to November 2018**
- **10/2015 - Just had 1,000 service accomplished on engines to maintain warranty**
- Engine Hours - approx. 1172 each
- Economical - 3.+ gal per mile at 18 knots 1900 RPM
- Cruising Speed - 18 knots / 23 knots max.
- CAT Computer Monitor Screens
- Port SN: CKH03143 / Starboard SN: CKH03131
- 2008 ZF Transmissions 2.59:1
- Electronic Controls with Synchronizers (3 stations)
- Vetus Bow Thruster
- Naiad Stabilizers
- (6) A/C units
- (4) Switchable Racor 1000 Fuel Filters
- SeaRecovery Water Maker 50 GPH / 1,200 GPD (currently pickled)

- (2) 35.5" Nibral Props with Spares
- Spare 10' Stub Shaft

Deck Equipment

- 60# Danforth w/ 200' 1" rode
- 60# Bruce w/ 200' Chain
- 1,500 lb. Davit
- Ideal BBHW electric 110v windlass w/ remote
- 2007 15' Boston Whaler Center Console w/ 2012 75hp Evinrude ETEC OB
- 8-man Avon w/ EPIRB (needs recertification)
- Marquipt boarding ladder
- Tide Ride Steps
- Fiberglass Radar Arch
- Transom Shower
- Frigibar Fridge/Freezer - Flybridge
- Cockpit lazarette storage
- Swim platform with ladder
- Transom door with gate
- Bow Pulpit with rails
- Spray rails - full hull length
- Windshield washer and wipers
- Fresh water washdown - (3) Stations
- Custom FB and Foredeck covers
- Fenders and Lines
- (2) FBG Foredeck dunnage boxes with cushions
- Windshield Covers
- Varnished Name Boards
- (2) Carlisle 10" Spotlights

Flybridge

- Frigibar refrigerator/freezer with seating pad
- Seating for 10
- Solid weather boards
- Custom Carbon Fiber/Fiberglass Hardtop
- Fiberglass Arches
- Opening overhead Hatch - over Helm seat
- Aft facing Steering Station - Throttle/Shifter, Steering, Bow Thruster
- 12v overhead lights
- New Venturi custom windshield
- Freshwater washdown

Aft Cockpit

- Highly varnished teak cap rail
- (2) 50 amp shore cord input
- (2) SS cleats
- (2) Halse pipes
- Transom door
- Fiberglass swim platform
- Magma propane grill
- Doorway to Master Stateroom
- (4) Fishing rod holders
- Stairs to upper Aft Deck

Safety & Fire Protection

- Portable EPIRB in Wheelhouse
- Handheld EPIRB for Whaler (Tender)
- Fire Extinguishers - (3) Guest Cabins, (1) Crew
- FireBoy System - engine room (needs recert)
- 8-person Avon Liferaft w/EPIRB - Aft Cockpit (needs recertification)

Additional Equipment

- (3) Underwater Lights - Transom
- Tank Tenders
- Intercom System
- IceMaker - Main Saloon
- Wet Bar - Main Saloon

Engine Hours Disclaimer

Please note: Engine hours shown here are as of the original listing date and are an account of what the Listing Broker was told by the Owner and/or actual reading of the engine hour meters. The Broker cannot guarantee the accuracy of engine and/or genset hours. It is the responsibility of the Buyer and/or his Agent/Surveyor to verify engine/genset hours, as well as all other representations noted on the Listing Brochure.

Исключения

При продаже яхты исключаются личные вещи владельца.

Отказ от ответственности

Компания предоставляет описание судна или яхты добросовестно, но не может гарантировать точность этой информации, а также не ручается за техническое состояние. Покупатель должен проинструктировать своих агентов или оценщиков исследовать представленную информацию более подробно, по собственному желанию. Продажа судна или яхты, изменение цены или снятие с продажи будет происходить без предварительного уведомления.

ФОТОГРАФИИ

Starboard Bow Profile



Aft Starboard Profile



Tender



Foredeck



Port outside passageway to bow



Cockpit



Raised Enclosed Aft Deck



Foredeck to aft



Flybridge Hardtop and Spotlight



Tender



Wheelhouse forward



Wheelhouse to port



Dining Room



Galley



Galley



Galley Dinette/Office



Saloon aft



Saloon forward



Guest Stateroom-1



Master Stateroom



Master Stateroom



MSR with door to Cockpit



Head, Shower



Guest Stateroom-2



Saloon to starboard, forward



Saloon to aft



Engine room



Engine room



Engine room



Engine room



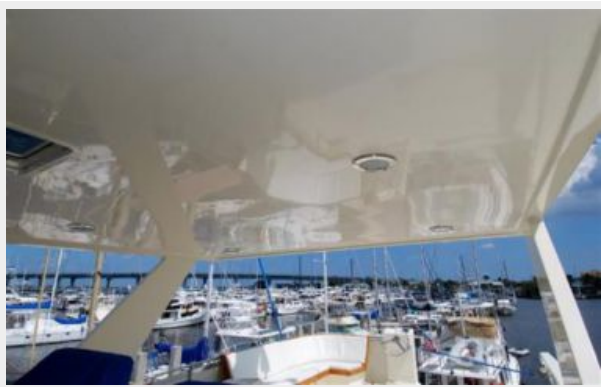
Aft Flybridge



Hatch in Flybridge Hardtop



Hardtop to port



Flybridge with Aft Fishing/Trolling Full Controls



Flybridge forward



Fenders/ HOLDERS at Bow



Ground Tackle



Cabin & Wheelhouse Profile



Stern Profile



Swim Platform, Transom Door to Cockpit



Aft Cockpit



Side Boarding Ladder



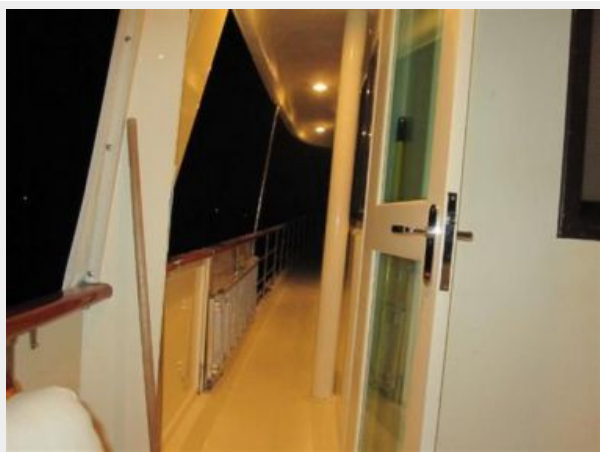
Cutwater



Portside Deck



Well lit at night



Crew Head



Crew Dinette converts to berth



Crew Dinette



Crew TV



Crew Shower



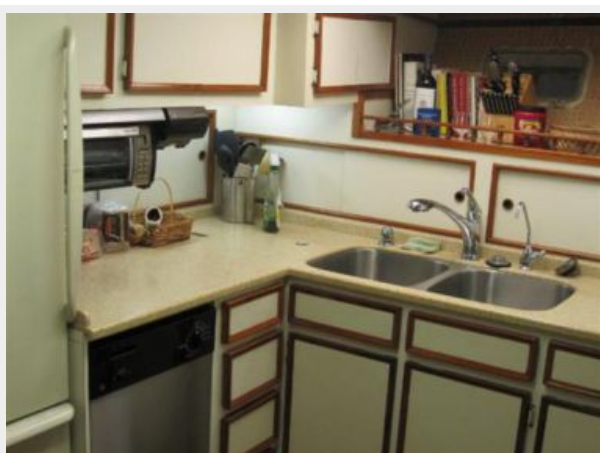
Crew Berth



Crew Berth



Galley



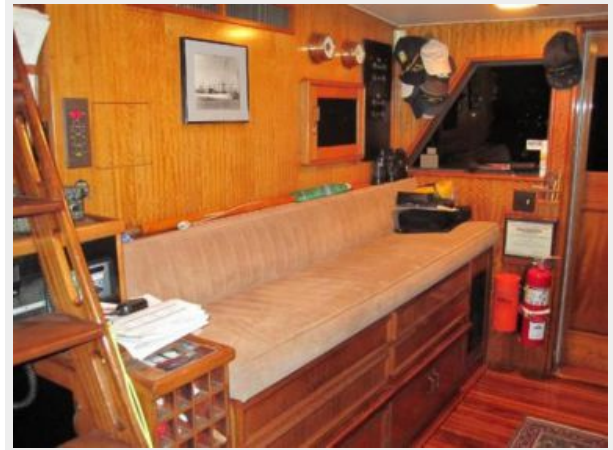
Galley



Laundry, Office/Dinette - opposite Galley



Wheelhouse Pilot's Seating/Berth



Wheelhouse Helm Station



Stairs to Flybridge from Wheelhouse



Saloon to aft, starboard



Staircase to Staterooms from Saloon



"L" sofa in Saloon



Doorway from Saloon to Wheelhouse



Icemaker and Wet Bar in Saloon



Raised Aft Deck at night



Engine Room



Engine Room



Racor Switchable Filters



Tender and Hoist



Tender stowed on Flybridge deck



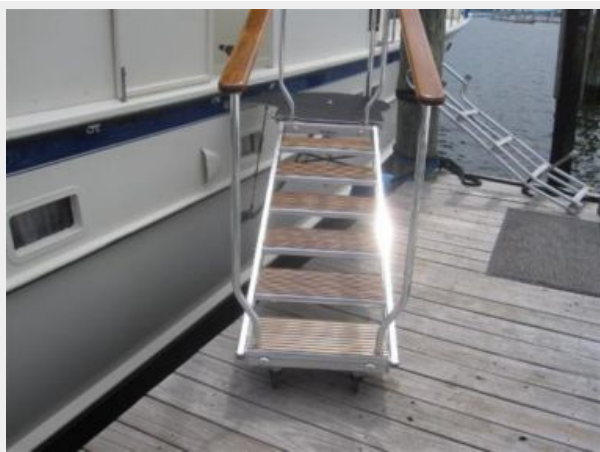
View underway from Aft Deck



Plenty of room for guests!



Marquipt TideRide boarding stairs



View underway from Flybridge



КОНТАКТЫ

Андрей Шестаков (Andrey Shestakov) – ведущий яхтенный брокер отдела продаж яхт и судов компании Shestakov Yacht Sales Inc. Официальный представитель Shestakov Yacht Sales Inc. для русскоговорящих клиентов в центральном офисе компании в Майами/Форт Лодердейл/Флорида/США.

Контактная информация

Email: andrey@shestakovyachtsales.com

Web: shestakovyachtsales.com

Телефоны

Краснодарский край: **+7(918)465-66-44**

США, Майами, Флорида: **+1(954)274-4435**

Время работы

Понедельник – Суббота: **9:00 - 21:00**
EDT

Воскресенье: **Закрито**

Адрес



Harbour Towne Marina, 850 NE 3rd St,
STE 213, Dania, FL 33004