

410EXPRESS FISHERMAN — ALBEMARLE



Builder: ALBEMARLE

Year Built: 2007

Model: Sport Fisherman

Price: PRICE ON APPLICATION

Location: United States

LOA: 41' 0" (12.50m)

Beam: 15' 9" (4.80m)

Max Draft: 4' 0" (1.22m)

Our experienced yacht broker, Andrey Shestakov, will help you choose and buy a yacht that best suits your needs **410Express Fisherman — ALBEMARLE** from our catalogue. Presently, at Shestakov Yacht Sales Inc., we have a wide variety of yachts available on our sale's list. We also work in close contact with all the big yacht manufacturers from all over the world.

If you would like to buy a yacht **410Express Fisherman — ALBEMARLE** or would like help answering any questions concerning purchasing, selling or chartering a yacht, please call **+1(954)274-4435**

TABLE OF CONTENTS

TABLE OF CONTENTS	2
SPECIFICATIONS	3
Overview	3
Basic Information	3
Dimensions	3
Speed, Capacities and Weight	3
Accommodations	3
Hull and Deck Information	4
Engine Information	4
DETAILED INFORMATION	5
Remarks	5
Manufacturer Description	5
Amenities	5
Electronics	5
Mechanical	6
Exclusions	6
Disclaimer	6
PHOTOS	7
CONTACTS	15
Contact details	15
Telephones	15
Office hours	15
Address	15

SPECIFICATIONS

Overview

MOTIVATED SELLER! Transmission Serviced New Risers New AC New Steering This 40' Express is the ultimate fishing machine with the sleek Carolina flare and beautiful lines. The 410 Express will stand up to the demanding requirements needed for the offshore enthusiast. With its over sized cockpit and bait prep station, there is no need to look any further. This Albemarle will not disappoint and is priced to sell. Don't let this one get away!

Basic Information

Category: Sport Fisherman

Sub Category: Express

Model Year: 2008

Year Built: 2007

Country: United States

Dimensions

LOA: 41' 0" (12.50m)

Beam: 15' 9" (4.80m)

Max Draft: 4' 0" (1.22m)

Speed, Capacities and Weight

Displacement: 32000 Pounds

Water Capacity: 100 Gallons

Fuel Capacity: 600 Gallons

Accommodations

Total Cabins: 1

Hull and Deck Information

Hull Material: Fiberglass

Engine Information

Engines: 2

Manufacturer: Caterpillar

Model: C-12

Engine Type: Inboard

Fuel Type: Diesel

DETAILED INFORMATION

Remarks

MOTIVATED SELLER! New Bottom Job All Caterpillar Services done July 2016 Transmission Serviced New Risers New AC New Steering

Manufacturer Description

The 410 Express is an impressive offshore fishing machine that combines striking lines and a dramatic Carolina-style flare, with unparalleled craftsmanship and rock solid construction. Everything about the 410 is designed to surpass even the most demanding requirements of serious big game anglers, while still delighting their senses with elegant refinements and comfortable appointments throughout. On deck, the 410 has a massive cockpit equipped with a standard livewell, ice/bait cooler, tackle storage, rigging station, oversized fishboxes and transom door, everything you need for a serious commitment to fishing. The helms many features include a captains station with superb visibility and well-appointed instrumentation, additional tackle storage, and comfortable wraparound seating, an appreciated feature on long runs offshore. Below deck, the custom decorated interior cabin and spacious forward stateroom clearly prove that luxury and fishability can co-exist in one stunning and well-refined sportfishing package.

Amenities

- Cherry appointed Interior
- Jensen Flatscreen TV - 20" Salon/ 13" Stateroom
- Bose Entertainment Center
- GE Profile Convection/Microwave
- Vitirigo Refrig/Freezer
- Icebright Ice Maker
- Eurokesa Princess 2 Burner stove
- Cruiseair A/C Salon/Helm

Electronics

- Furuno Navnet 3D X 2 Lower helm
- Furuno 72 mi Radar
- Simrad AP/24 Auto pilot Lower/Upper station
- Glendenning Controls
- ACR Spotlight
- ICOM - M504 VHF Radio
- Clarion Stereo

- JL Audio Sound system
- Navnet 8" Upper Station
- Bose Entertainment system

Mechanical

- Onan Generator 1847 hrs
- Fireboy Fire system
- Reverso Oil change system
- Electrical hatch for exterior access
- 50 Amp Shore power service
- Glendenning Cablemaster

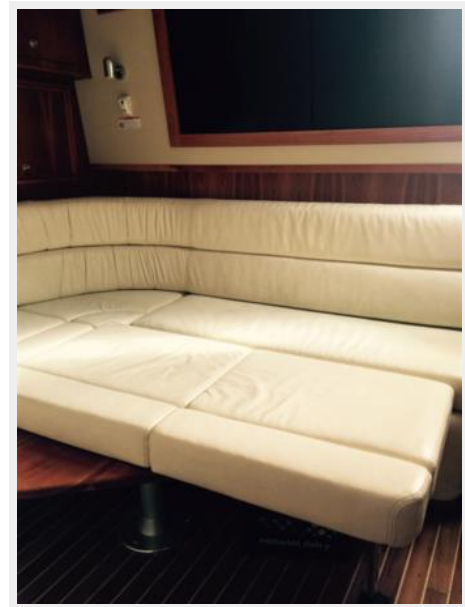
Exclusions

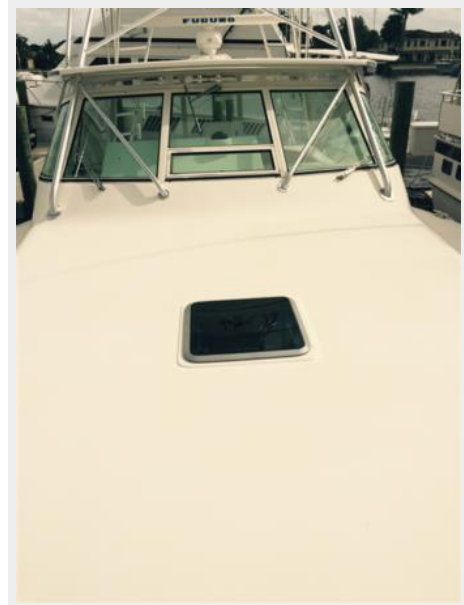
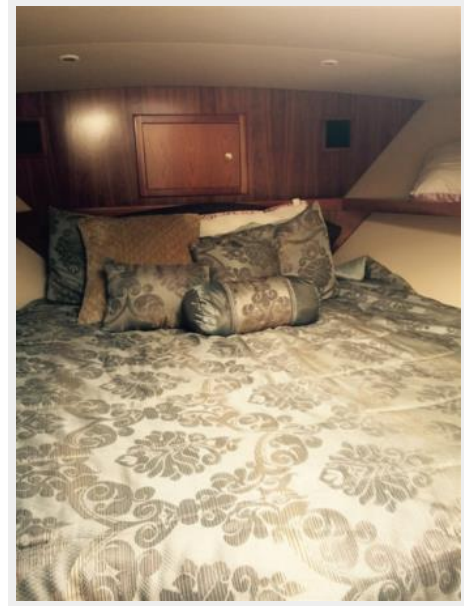
Owner's personal belongings.

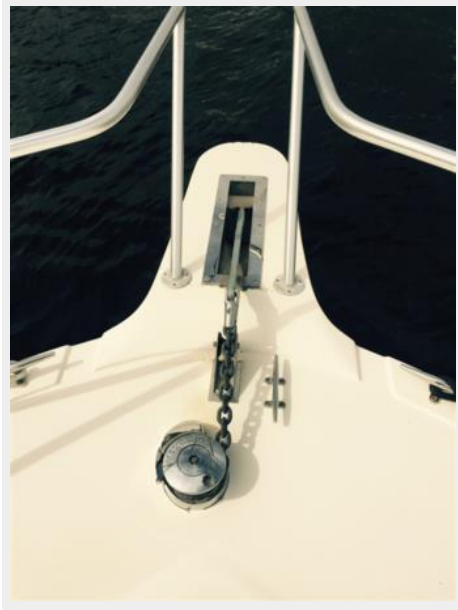
Disclaimer

The Company offers the details of this vessel or yacht in good faith but cannot guarantee or warrant the accuracy of this information nor warrant the condition of the vessel. A buyer should instruct his representatives, agents, or his surveyors, to investigate such details as the buyer desires validated. This vessel or yacht is offered subject to prior sale, price change, or withdrawal without notice.

PHOTOS



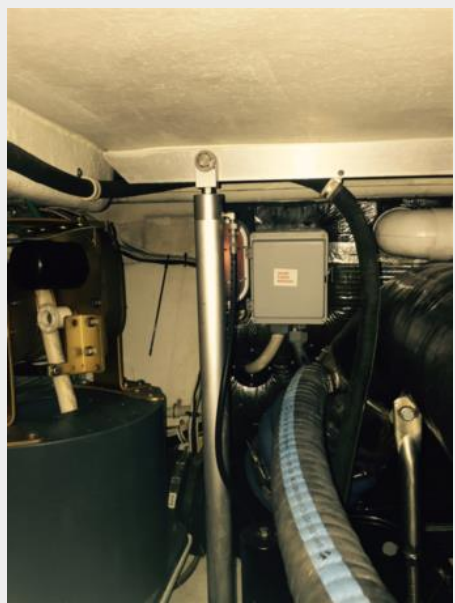
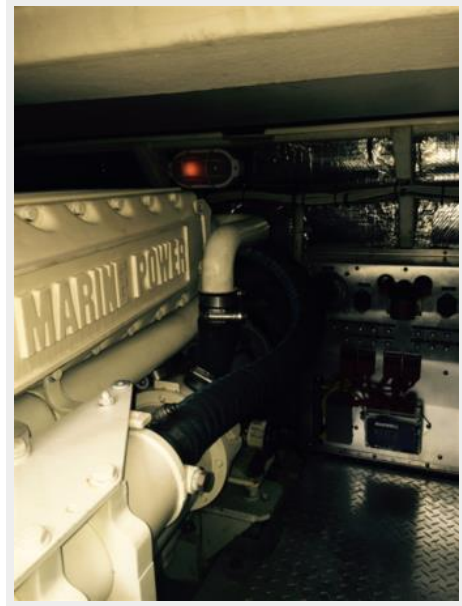














CONTACTS

Andrey Shestakov, leading yacht broker of the sales department of Shestakov Yacht Sales Inc. Shestakov Yacht Sales Inc., the official representative of the Miami/Fort Lauderdale FL headquarters.

Contact details

Email: andrey@shestakovyachtsales.com

Web: shestakovyachtsales.com/en/

Telephones

USA: +1(954)274-4435

Office hours

Monday – Saturday: **9:00 - 21:00** EDT

Sunday: **closed**

Address



Harbour Towne Marina, 850 NE 3rd St,
STE 213, Dania, FL 33004