

100' FERRETTI CUSTOM LINE — FERRETTI CUSTOM LINE



Судостроитель:
FERRETTI CUSTOM LINE

Год постройки: 2014

Модель: Мега-яхта

Цена: ЦЕНА ЯХТЫ ПО ЗАПРОСУ

Местонахождение: United States

Длина общая: 100' 0" (30.48m)

Ширина: 23' 11" (7.29m)

Макс. осадка: 5' 7" (1.70m)

Купить 100' Ferretti Custom line — FERRETTI CUSTOM LINE а также выбрать подходящую вам яхту из нашего каталога яхт вам поможет опытный яхтенный брокер Андрей Шестаков. На сегодняшний день компания Shestakov Yacht Sales Inc. имеет большое количество яхт в собственном списке продаж, а также тесно сотрудничает со всеми крупными яхтенными производителями по всему миру.

Для того чтобы купить яхту 100' Ferretti Custom line — FERRETTI CUSTOM LINE а также проконсультироваться по любому вопросу связанному с покупкой, продажей, чартером яхт позвоните по телефону **+7(918)465-66-44**.

ОГЛАВЛЕНИЕ

ОГЛАВЛЕНИЕ	2
ХАРАКТЕРИСТИКИ	4
Основная информация	4
Размеры	4
Размещение	4
Корпус и палуба	4
Информация о двигателе	4
ПОДРОБНОЕ ОПИСАНИЕ	5
Description Per Area	5
Electronics	5
Equipment	7
Exterior	7
Mechanicals	8
Main Salon	9
Upper Deck Salon	9
Master Stateroom & Bathroom	10
VIP Stateroom & Bathroom	11
Guest Staterooms & Bathrooms	11
Galley	11
Crew Mess	12
Crew Cabins	12
Accessories	12
Исключения	12
Отказ от ответственности	13
ФОТОГРАФИИ	14
КОНТАКТЫ	18
Контактная информация	18
Телефоны	18

Время работы	18
Адрес	18

ХАРАКТЕРИСТИКИ

Основная информация

Тип судна: Мега-яхта	Модельный год: 2014
Год постройки: 2014	Страна: United States
Открытая палуба мостика: Да	Кубрик: Да

Размеры

Длина общая: 100' 0" (30.48m)	Ширина: 23' 11" (7.29m)
Макс. осадка: 5' 7" (1.70m)	

Размещение

Всего кают: 5	Всего ком. состава: 6
Каюта капитана: Да	Каюты экипажа: 2
Комм. состав экипажа: 2	

Корпус и палуба

Материал корпуса: Fiberglass	Комплектация корпуса: Deep Vee
------------------------------	--------------------------------

Информация о двигателе

Двигатели: 2	Производитель: MTU
Модель: 16V 2000 M94	Тип двигателя: Inboard
Тип топлива: Diesel	

ПОДРОБНОЕ ОПИСАНИЕ

Description Per Area

Layout DAYHEAD: Air conditioning Cabinets with shelves Ceiling spotlights Electric ceramic WC Electric ventilation fan Laminated flooring Mirror Washbasin with wooden counter top WC control panel with gauge (3/4 and full) Wooden lacquered Venetian blinds **MAIN RAISED HELM POSITION:** Access to master lobby (wooden stairs, handrail and courtesy lighting) Access to sun deck helm position (anti-slip and wooden stairs, courtesy lights, glass and stainless steel frame companion door) Acoustic alarms Air conditioning Automatic pilot control unit CCTV video sequencer with 15" display Ceiling spotlights Cigarette lighter outlet 12V Clock, barometer, hygrometer Dimmer for navigation instruments lighting Electric control for searchlight Electric openings on dining area with plexi sliding closures Electronic controls for engine clutch and throttle with easy-dock and auto-troll functions External acoustic alarm for bilge water level in garage, engine room and bow Fire detection system control panel Helm position electric panel Integrated monitoring system with 15" touch-screen display Integrated navnet D 3 (1 bbox) with LCD 15" color displays (2) 48 miles Furuno radar, GPS and chartplotter, depthsounder Interceptor indicator Inter-com for maneuvering Lamp for chart reading Lamp for SSB Leather covered steering wheel Leather helm-seat with electric movement control Leather sofa Lights for night and day navigation Magnetic compass Mini HiFi system with CD player and speakers (2) Multifunction navigation instrument (Eco, Log and water temperature)(2) Multifunction Printer / Fax NAVTEX weather receiver Portable GMDSS VHF (2) Power-assisted hydraulic steering and for emergency rigging Protective external covers for front windscreen Rudder angle indicator SART Transponder ACR PATH FINDER 3 Side exit door (wheelhouse walkaround) Soft touch varnished dashboard SSB/DSC transceiver Steering position with complete navigation instrument Synoptic panel unit with acoustic and visual alarms Telephone Telephone interface GSM/Voice/Fax Unit with nautical charts storage in plexiglass VHF transceiver (2) Windlass control at bow Windscreen wipers (3) with washing system and timer Wooden flooring **LOWER DECK: LOBBY:** Access to main deck (sole leather linen stairs, courtesy lights and handrails) Ceiling lights Closet Electric panel for cabins Fire hose outlet with sea water Fitted carpet with soundproof lining Mirror

Electronics

COMMUNICATIONS: Input lines fixed up for SATCOM Internal telephones (9) and cordless (2) Multifunction printer with fax Open Array Radar antenna Portable GMDSS VHF (2) (helm position) Router coastal communicator PD-LAN-WIFI-Internet Shore socket (TV and telephone) SSB/DSC transceiver Telephone interface GSM/Voice/Fax Telephone switchboard TV antenna VHF (4) (2 helm position, flybridge, crew dinette) **MONITORING SYSTEM:** Air conditioning system fan coil monitoring and control Alarm, with database and current alarm, monitoring Bilge pump system monitoring Black/grey water tank level monitoring CCTV monitoring Electrical system (batteries, batteries charger, generators, shore power, electric panels) monitoring and control Galvanic isolation monitoring Gyro stabilizer monitoring High and low fuel level

monitoring Lighting monitoring and control Monitoring system with 15" touch-screen display (3, in helm station, systems area and crew area): Navigation lights monitoring Outside doors and portholes monitoring Smoke detection alarm monitoring Water tank level monitoring Weather data monitoring CCTV SYSTEM: CCTV image modulated in TV set CCTV video sequencer with display (helm position) Closed circuit surveillance system with colour cameras (6) Day/night internal cameras (3) (in engines room (2) and systems area) External TVCC cameras (3) in the cockpit and side decks NAVIGATION: Anti fog horn Autopilot unit (2) (raised helm position e flybridge helm position) GPS antenna (2) Multifunction navigation instrument (2 raised helm position 2 flybridge helm position) Navnet system 3D with colour 15" LCD displays (2), 48 nm radar, chartplotter and GPS, depthsounder (raised helm position) Navnet system 3D with colour 8" LCD display (48 nm radar, chartplotter and GPS, depthsounder) (flybridge helm position) NAVTEX weather receiver Steering positions (3) (1 in cockpit, 2 with instruments and alarms in main helm position and flybridge helm position) SYSTEMS FRESH WATER SYSTEM: Dockside water connection Fresh water pump with autoclave (American version) Fresh water outlets for washing (4) (bow, side decks (2) and upper deck) Fresh water structural tank (3000 lt) Heating boilers (2) 150 lt 150 lt Hot water circulating pump Watermaker 220 lt/h Grey water 3 way valve in galley BLACK AND GREY WATER SYSTEM: Automatic grey water discharge system (interchangeable with black water) Black water tank structural (800 lt) with warning light 3/4 and full Electric automatic pump for black water tank discharge (interchangeable with grey water) Electric system WC with fresh water flush Grey and black water tanks washing system with sea water flush Grey water tank structural (800 lt) Marpol discharge outlet for black water FIRE EXTINGUISHING SYSTEM: Fire extinguishers located in each room/cabin Fire extinguishing system with sea water (garage) with activation from the systems area Fire hose outlet with sea water (bow, (2) side decks, cabins lobby, upper deck, systems area and crew lobby) Fire fighting: automatic manual system in engine room and system area Fuel vapors detector system (garage) Pull handles for the engine room (engine fuel and generators shut-down, air inlet (4) and ventilation fan shut-off (2), activation of fire extinguishing system in engine room and systems area) Smoke detector system (in all cabins, galley, dining room, saloon, helm position, upper lounge, garage, engine room and systems area) with main alarm in helm position AIR CONDITIONING: Air conditioning American version (outlet in the bathroom included) FUEL SYSTEM: Double Racor filters for engines (2) Fuel structural tank (14700 lt) Pipes in compliance of the class requirement Racor filters for generators (2) ELECTRIC SYSTEM: Automatic battery charger 12 V (battery banks for generators starting) Automatic battery charger 24 V (main engines battery bank) (engine room) Automatic battery charger 24 V for emergency batteries Automatic battery charger 24 V for radio batteries Automatic battery chargers 24 V (services battery banks) Auxiliary generator starting battery 12 V (engine room) Battery bank 24 V for domestic loads (engine room) Battery bank 24 V for emergency (engine room) Battery bank 24 V for radio (upper deck) Cathodic protection with zinc anodes Copper strip ground system Distribution 24 V DC for emergency and navigation lights Distribution system 120 V - 60 Hz Distribution system 24 V cc powered by the battery banks Electric double sockets 120V Electronic battery disconnecting switches (domestic load, emergency, radio) Emergency lighting system 24 V Genset, auxiliary 65 kW - 60 Hz with soundproof casing Genset, main 65 kW - 60 Hz with soundproof casing Glendinning (20 mt) 100 A 400 V 3 poles ground Ground connection for sea water intake and railings/pulpit Independent battery banks 24 V for main engines (engine

room) Isolation triphase transformer Lighting system 220 V Main electric panel and secondary panels (systems area, helm position, saloon, lobby lower deck, galley, crew area) Main engine battery banks parallel switch Main generator starting battery 12 V (engine room) Manual battery disconnecting switches (generators, main engine) Parallel system between genset/shore power BILGE PUMP SYSTEM: Bilge alarm in each compartment Centralized bilge pump system with electric pumps (2) and manual emergency pump with cock handles (11) (accommodation space (3), engine room (2), garage (4), systems area (2)) Drainage electric pumps 24 V (8) (guests and crew area (3), garage and systems area (3), engine room (1), bow thruster (1)) Emergency bilge suction pipe (engine room) through engine cooling pumps Marpol connection for bilge oily water drainage

Equipment

Inside Equipment: Electric bilge pump Refrigerator Microwave oven Heating Bow thruster Hot water Air compressor Fresh water maker Stern thruster Dishwasher Washing machine Oven Battery charger Air conditioning Manual bilge pump Electric head Deep freezer Electrical Equipment: Shore power inlet Inverter Generator PROPULSION AND CONTROL EQUIPMENT PROPULSION AND CONTROL: Fibreglass underwater silenced exhausts Hydraulic bow thruster (58 Hp) Power-assisted hydraulic steering Shaft line transmission Stuffing box with dripless shaft seal, low maintenance ANTI ROLLING SYSTEMS: Anti rolling gyro Fixed interceptor Trim tabs (interceptor) SAFETY EQUIPMENT: Axe Child life jackets (2) EPIRB ACR GLOBAL FIX First aid kit Housed life rings (2), one with rope and luminous buoy Life jackets (20) Life rafts for 20 people (2 x 10) SART Transponder ACR PATH FINDER 3

Exterior

MAIN DECK: Access hatch to forepeak Access to bathing platform from starboard side (stainless steel and plexiglass gate, teak and GRP stairs, electrohydraulic stairs hatch with stainless steel handrails) Access to gangway (stainless steel and plexiglass gate) Access to the helm position walk around (GRP and teak stairs) Access to the systems area (wooden and anti-slip stairs in the starboard support) Access to the upper deck (GRP and teak stairs, stainless steel handrail, courtesy lights) Aft (2), bow (4) roller fairleads Aft manual glass sliding door with stainless steel frame Boat hooks (3) Bow cabinet with electro-hydraulic door Bow pulpit with stainless steel side rails Capstans (2) in cockpit docking cabinet (2200 W each) CCTV colour cameras (3) (in cockpit and side deck ceilings) Chain wash down with sea water Closet with shoe cabinet in the port support Cockpit chairs (5) Concealed lighting on side decks and at bow Cover for cockpit table and chairs, cockpit sofa, forward sofa, forward sunpad Courtesy lights on lateral, stern and forward steps Cylindrical fenders (8) Docking lines 130 mt Dockside water connection Electric anchor windlasses (2) (4000 W each) with controls at bow Electro-hydraulic garage door teak-laid on the inside Emergency escape from engine room in the cockpit (hatch and removable stairs in stainless steel and teak) Extractable shower with hot and cold water (mooring station) Fairleads with stainless steel cleats (2 each side) Fender covers (8 6) Fire hose outlets with sea water (3) (bow, starboard side deck, sun deck) Fix lateral panoramic glass windows at starboard side with

stainless steel frame Fixed steering position in the cockpit, port support, with cover Forward dinette (sofa (2), tables (2)) Forward sunpad with cushions (2) and storage Fresh water outlets for washing (bow and stern mooring area) Garage at stern with lifting and launching tender system Garbage container in the port side Glendinning electric shore power connection 100 A 220 V triphase Housed life rings (2) one with rope and luminous buoy Hydraulic bow thruster (58 Hp) Inter-com for manoeuvring (2) (bow and cockpit) Lights for bow mooring area (2) Mooring station (2) with GRP covers, storages for mooring lines Openable panoramic terrace on starboard side with electro-hydraulic system, with teak-laid floor, stainless steel removable handrail and lines Perimeter curtain rod for canopies (cockpit and side decks) Pool anchors (2) 140kg with chains (2) 165 mt, diameter 13 mm, with markings in increments of 25 mt Pull handles in the engine room (engine fuel and generator shut-down, air inlet (2) and ventilation fan shut-off (2), activation of fire extinguishing system) Refuelling and water intake on side decks Round fenders (6) Side exit doors to manual handling and electric lock (2) Side gates (2) for passengers disembarking at side Spot lights on cockpit and side decks Stainless steel bow hawses (2) Stainless steel bow staff with bell Stainless steel cleats: (4) at stern and (4) at bow Stainless steel deck hardware Stainless steel supports from deck to cockpit ceiling Stainless steel, teak-laid electro-hydraulic telescopic gangway with remote controls (2) and automatic stanchions Stern sofa Systems area hatch (in GRP and teak and stairs in stainless steel and removable teak) Teak bathing platform with foldaway electro-hydraulic diving bathing ladder, and stainless steel cleats (2) Teak laid deck Teak table with natural finishing (1800 mm x 1350 mm) Warping line 100 mt Waterproof speakers (4) in the cockpit with amplifiers (2) and volume control (connection to the salon MD) remote control FLYBRIDGE HELM POSITION: Access to raised helm position (anti-slip and wooden stairs, glass companion door with stainless steel frame) Acoustic alarms Automatic pilot control unit Co-pilot bench Digital chain counter (2) Electric control for searchlight Electric helmsman bench Electronic controls for engine clutch and throttle with easy-dock and auto-troll functions GRP dashboard Inter-com for maneuvering Multifunction navigation instrument (Eco, Log and water temperature) (2) Plexiglass and stainless steel front and side windscreen Power-assisted hydraulic steering Repeater Integrated navigation system with 8" LCD colour display (48 nm radar, chartplotter and GPS, depthsounder) Rudder angle indicator Second helm position with instruments and alarms VHF dual station Watertight Cigarette lighter socket 12 V Watertight mini Hi-Fi system with FM/AM tuner

Mechanicals

ENGINE ROOM: Access to cockpit (hatch, stainless steel and teak stair) Access to systems area (fire door with porthole) Air extractors (2) with remote controlled emergency shut down Air inlets with separators and remote controlled emergency shut-down Alluminium anti-slip flooring Centralized bilge pump system with 400 V electric pumps (2) with cock handles (11) (accomodation space (3), engine room (2), garage (4), systems area (2)) Day/night CCTV colour cameras (2) Diverter valves (2) to allow engines to pump water from the bilge Double Racor filters to main engines (2) Electro-hydraulic control unit for bow thruster Electro-hydraulic control unit for side panoramic terrace External finishing panels in multi-layer light alloy sheet Fire extinguishing system with CO2 automatic/manual activation Gen set, auxiliary 55 kW with

soundproof casing Gen set, main 55 kW with soundproof casing Inspection lamp Neon lamps Racor filters to generators (2) Smoke detector Smoke separators for generators Stainless steel handrails around main engines Visible fuel level gauge Water filters (2) for engine cooling system Water filters (2) for generator cooling system Work bench with vice, shelves and tool set CONTROL ROOM: Access to cockpit (non slip stairs) Access to engine room (watertight door with window) Access to the garage (gas-tight door) Air compressor with spray gun and spiral hose Air conditioning chiller with water heater Alluminium anti-slip flooring Autoclave system Bilge/fire extinguishing pump Day/night CCTV colour camera Electro-hydraulic control unit for gangway, swimming ladder, garage door Electro-hydraulic control unit for helm position Fire extinguishing system with CO2 Fire hose outlet with sea water Hatch (in GRP and teak and stairs in stainless steel and removable teak) Hydraulic emergency wheel Integrated monitoring system with touch-screen display Inter-com for maneuvering Main electric panels (2) Neon lamps Rudder angle indicator Smoke detector Telephone Watermaker 180 lt/h

Main Salon

Aft manual glass sliding door to cockpit with stainless steel frame Air conditioning Angular shelf Audio/Video mediaservers Seamphony master Blu Ray DVD reader Cabinets with shelves Ceiling spotlights Concealed overhead lighting system Cordless telephone Electric curtain for aft door and starboardside glass window Electric curtains (2) for lateral panoramic fixed windows Electric Roman blinds (2) (glass window on portside) Fitted carpet with soundproof lining Fix lateral panoramic glass windows at starbord side with stainless steel frame Fridge with drawer 90 lt 24V Hi-Fi surround 5 1 Integrated remote control for Audio/Video LCD TV 46" Living area (leather sofas (2), coffee table) TV SAT receiver Dining Area: Access to the galley (sliding door in glass to saloon side and in wood to galley side) Access to the master lobby (sliding door in glass to saloon side and in wood to lobby side) Air conditioning Cabinets with shelves and drawers Ceiling openings with electrically operated sliding closures in semi-transparent plexi Ceiling spotlights Complete tableware and cutlery for 12 people Concealed overhead lighting system Electric Roman blinds (2) Fitted carpet with soundproof lining Lacquered dining table with stainless steel frame (2400 mm x 1000 mm) Leather chairs (8) Lighting panels

Upper Deck Salon

EXTERNAL Access to cockpit (GRP and teak stairs, courtesy lights and stainless steel handrails) Acoustic alarm Anti-slip deck Bar counter (stools (2), icemaker and storage) Cockpit stairs skylight with stainless steel handrail Cover for (sofa, sunbathing area, table and stools) Curtain rod for canopy (hard top) Electric operated searchlight Electro-hydraulic control unit for the upper deck davit crane EPIRB ACR GLOBAL FIX Fire hose outlet with sea water Fresh water outlet for washing Fully fitted cabinets (with hot/cold fresh water sink, fridge (2 doors) and grill) GPS antenna (2) (hard top) GRP hard top with stainless steel supports and anti-UV serigraf multilayer glass roof GSM antenna (hard top) Lateral stainless steel side rails partially foldable Liferafts for 20 people (2 x 10) with hydrostatic hook (2) Manual side exit door from helm station (wheelhouse walkaround) Natural wood tables (2) with central extension Navigation lights Open

Array Radar antenna (hard top) Outdoor upper deck lighting RADIO battery banks 120Ah 24 V with battery disconnecting switch Removable stainless steel aft railing Sofa SSB Antenna (2) Stainless steel and varnished electro-hydraulic davit crane 800 Kg Stainless steel flag staff Stainless steel ladder to hard top Stainless steel signal mast Sunbathing area with cushions TV antenna (hard top) VHF antenna (2) (hard top) Waterproof speakers (4) connected to the sun deck Mini Hi-Fi Wheelhouse walkaround in GRP with access (2) to the main deck (lateral sides), to the helm position (side door), to the sunbathing area, to the forward dinette FLYBRIDGE HELM POSITION Access to raised helm position (anti-slip and wooden stairs, glass companion door with stainless steel frame) Acoustic alarms Automatic pilot control unit Co-pilot bench Digital chain counter (2) Electric control for searchlight Electric helmsman bench Electronic controls for engine clutch and throttle with easy-dock and auto-troll functions GRP dashboard Inter-com for maneuvering Multifunction navigation instrument (Eco, Log and water temperature) (2) Plexiglass and stainless steel front and side windscreen Power-assisted hydraulic steering Repeater Integrated navigation system with 8" LCD colour display (48 nm radar, chartplotter and GPS, depth sounder) Rudder angle indicator Second helm position with instruments and alarms VHF dual station Watertight Cigarette lighter socket 12 V Watertight mini Hi-Fi system with FM/AM tuner

Master Stateroom & Bathroom

Air conditioning with external air inlets with manual control Audio/Video mediaservers Seamphony unit Bookshelves Cabinets with shelves Ceiling spotlights Concealed overhead lighting system Cordless telephone Desk with drawers, glass top, leather armchair and bookshelves Digital safe Double bed with mattress, pillows, bedspread and sheets Drawers under bed (4) Dressing table (with mirror, drawers (2), glass top and leather ottoman) Electric lissage blinds (2) with black-out roll-up Fitted carpet with soundproof lining Headboard upholstered in leather Hi-Fi surround 2.1 system with Blu-Ray Lateral panoramic hull window Leather armchairs (2) with coffee table Lighting panel Natural ventilation under the mattress Nightstands (2) with drawers with leather inserts Reading lights (2) TV 46" TV SAT receiver Walk-in wardrobe with mirror, shelf and curtains at side wall Wardrobe (hanger) with mirror on door Master Head: Air conditioning Ceiling spotlights Cupboards with mirrored doors and shelves Electric ceramic WC and bidet, in separate area with glass door and stainless steel frame Electric extractor fan for heads and shower Laminating flooring Lighting ceiling panel with LED Lockers with shelves Shower (with glass door, stainless steel frame, Laminating tray and seat, waterproof curtain) Towels set Walls in lacquered and Laminated Washbasins (2) with wooden counter top WC control panel with gauge (3/4 and full) Wooden lacquered Venetian blinds Master Lobby: Access to dayhead Access to dining area (sliding door with glass to saloon side and in wood to lobby side) Access to galley (sliding door in wood) Access to lower deck (sole leather linen stairs, courtesy lights and handrails) Access to master stateroom Access to helm position (wooden stairs, courtesy lights and handrail) Air conditioning Cabinets with door and shelves Ceiling spotlights Closet for electronic communication devices Fitted carpet with soundproof lining Manual side exit door with electric lock

VIP Stateroom & Bathroom

VIP CABINS AT STERN (2): Air conditioning Ceiling spotlights Digital safe Double bed with mattress, pillows, bedspread and sheets Drawers under bed Dressing table with mirror, cabinets with shelves, drawers and leather ottoman Fitted carpet with soundproof lining Fixed window with openable portholes (2) in stainless steel Headboard upholstered in leather Lisage blinds and black-out roll-ups (2) Mini Hi-Fi CD/DVD system with tuner and loudspeakers (2) Natural ventilation under the mattress Nightstands (2) with drawer Reading lights (2) Telephone TV 40" TV SAT receiver Walk-in wardrobe with mirror Wall lockers with leather doors and shelves VIP Heads AT STERN (2): Air conditioning Cupboards with mirrored doors and shelves Electric ceramic WC and bidet in separate area with glass door and stainless steel frame Electric ventilation fan for heads and shower Laminating flooring Led lighting panel Lockers with shelves Openable porthole in stainless steel Shower (with glass door and stainless steel frame, Laminating tray and seat, waterproof curtain) Towels set Washbasin with wooden counter top WC control panel with gauge (3/4 and full) Wooden lacquered Venetian blinds

Guest Staterooms & Bathrooms

GUEST CABINS (2): Air conditioning Beds (2) (mattresses, pillows, bedspreads and sheets) Ceiling spotlights Concealed overhead lighting system Drawers under each bed Dressing table with mirror and leather ottoman Fitted carpet with soundproof lining Fixed window with (2) stainless steel openable portholes Headboard upholstered in leather Lisage blinds (2) with black-out roll-ups Mini Hi-Fi CD/DVD system with tuner and loudspeakers (2) Natural ventilation under the mattress Nightstand (2) with drawers Reading lights (2) Telephone TV 26" TV SAT receiver Wardrobe (shelves and mirror) GUEST Heads (2): Air conditioning Ceramic bidet Cupboards with mirrored doors and shelves Electric ceramic WC Electric extractor fan for toilet and shower Laminating flooring Led lighting panel Locker with drawers and shelves Openable porthole in stainless steel Shower (with glass door and stainless steel frame, Laminated tray and waterproof curtain) Towels set Washbasin with wooden counter top WC control panel with gauge (3/4 and full) Wooden Venetian blinds

Galley

"Side by side" fridge-freezer 504 lt. 120V with icemaker Access to crew area (carpeted stairs with courtesy lights) Access to dining area (wooden sliding door) Access to master lobby (wooden sliding door) Air conditioning Cabinets with shelves and drawers Ceiling spotlights Ceramic electric 4 1 ring cooktop with pan holders Dishwasher for 12 Electric oven Electric panel for galley Extractor fan 120 V with external outlet Freezer 98 lt Fridge 141 lt Garbage compactor Manual side exit door with electric lock Microwave oven Mini Hi-Fi system CD with tuner and loudspeakers (2) Overhead cupboards with shelves Quartz resin counter top Stainless steel sinks (2) with fresh water Technical locker with main deck electric panel and electronic equipment Telephone Venetian blinds Vinyl flooring Waste disposal unit

Crew Mess

Access to main deck (carpeted stairs with courtesy lights and underneath storage compartment)
 Acoustic alarm for bilge water level in garage, engine room and bow
 Air conditioning
 Cabinets with shelves
 Carpet flooring
 Ceiling spotlights
 Ceramic electric two rings cooktop with pan holders
 Complete tableware for 5 people (crew)
 Cordless telephone
 Curtain
 Dinette (sofa and wooden table to be extended)
 Dryer
 Electric panel for crew area
 Extractor fan 230 V with external outlet
 Fire hose outlet with sea water
 Fridge 130lt 230V
 Integrated monitoring system with touch-screen display
 LCD TV 19"
 Marble/resin countertop
 Mini Hi-Fi CD/DVD system with tuner and loudspeakers (2)
 Openable porthole in stainless steel
 Overhead cupboards with shelves
 Sink in stainless steel with fresh water
 TV SAT receiver
 VHF dual station
 Washing machine

Crew Cabins

CAPTAIN'S CABIN: Air conditioning
 Bookshelves
 Ceiling spotlights
 Curtain
 Drawers under the bed (2)
 Fitted carpet
 Mini Hi-Fi CD system with tuner and loudspeakers (2)
 Multifunction navigation instrument (Eco, Log, water temperature)
 Openable porthole in stainless steel
 Reading light
 Single bed with mattress, pillow, bedspread and sheets
 Telephone
 Wardrobe with mirror and safe
CAPTAIN'S Head: Ceiling spotlights
 Cupboards with mirrored doors and shelves
 Curtain
 Electric ceramic WC
 Electric ventilation fan
 Locker with shelves
 Openable porthole in stainless steel
 Shower with glass door and wooden tray
 Towels set
 Washbasin
 WC control panel with gauge (3/4 and full)
 Wooden flooring
CREW CABINS (2): Air conditioning
 Bunk-beds with mattresses, pillows, bedspreads and sheets
 Ceiling spotlights
 Curtain
 Fitted carpet
 Mini Hi-Fi CD system with tuner and loudspeakers (2)
 Openable porthole in stainless steel
 Reading light (2)
 Wardrobe
CREW Heads (2) Cupboard
 Curtain
 Electric ceramic WC
 Electric ventilation fan
 Locker with shelves
 Openable porthole in stainless steel
 Shower with waterproof curtain
 Towels set
 Washbasin
 WC control panel with gauge (3/4 and full)
 Wooden flooring

Accessories

Outside Equipment/Extras: Hydraulic gangway
 Cockpit table
 Teak cockpit
 Cockpit shower
 Swimming ladder
 Tender
 Cockpit cushions
 Teak sidedecks
 Liferaft
 Total Liferaft Capacity: 10
 Hydraulic windlass
Covers: Bimini Top
GARAGE: Access to the systems area (gas-tight door)
 Electric ventilation fan
 Electro-hydraulic garage door
 teak-laid on the inside
 Fibreglass anti-slip flooring
 Fire extinguishing system with sea water
 Fresh water outlet for washing
 Fuel vapors detector system
 Hot/cold shower
 Neon lamps
 Smoke detector
 Tender cradle and launching system
CERTIFICATES: International Tonnage Certificate ITTC69
 RINA Class Certificate for Pleasure Yacht: C HULL • MACH Y unrestricted navigation

Исключения

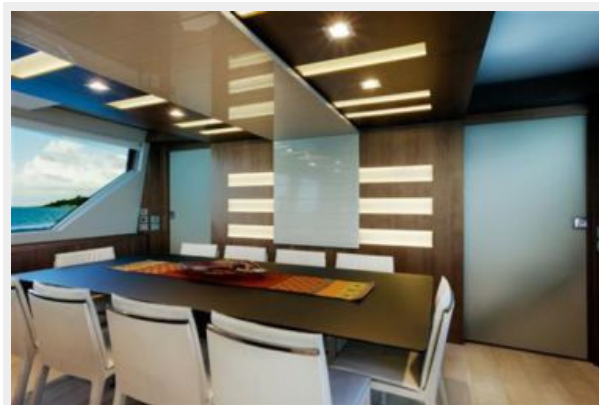
При продаже яхты исключаются личные вещи владельца.

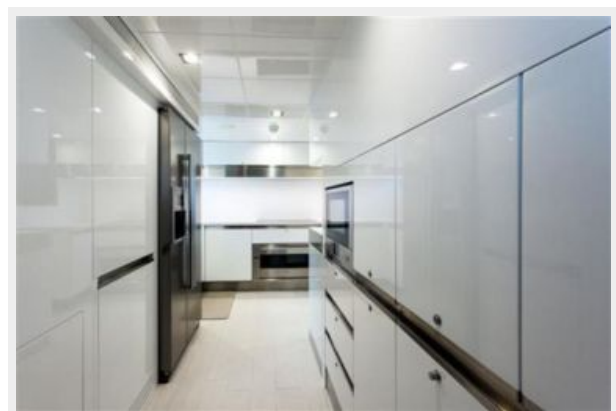
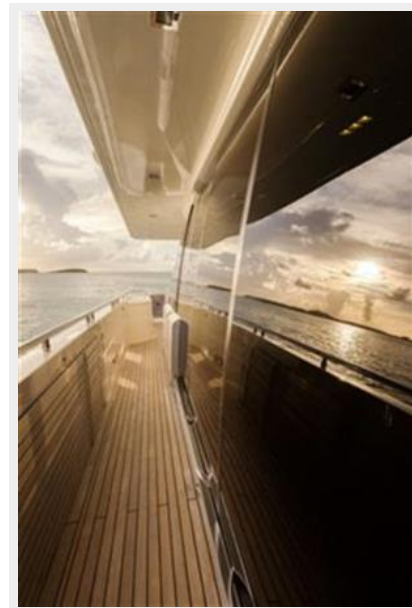
Отказ от ответственности

Компания предоставляет описание судна или яхты добросовестно, но не может гарантировать точность этой информации, а также не ручается за техническое состояние. Покупатель должен проинструктировать своих агентов или оценщиков исследовать представленную информацию более подробно, по собственному желанию. Продажа судна или яхты, изменение цены или снятие с продажи будет происходить без предварительного уведомления.

ФОТОГРАФИИ









КОНТАКТЫ

Андрей Шестаков (Andrey Shestakov) – ведущий яхтенный брокер отдела продаж яхт и судов компании Shestakov Yacht Sales Inc. Официальный представитель Shestakov Yacht Sales Inc. для русскоговорящих клиентов в центральном офисе компании в Майами/Форт Лодердейл/Флорида/США.

Контактная информация

Email: andrey@shestakovyachtsales.com

Web: shestakovyachtsales.com

Телефоны

Краснодарский край: **+7(918)465-66-44**

США, Майами, Флорида: **+1(954)274-4435**

Время работы

Понедельник – Суббота: **9:00 - 21:00**
EDT

Воскресенье: **Закрето**

Адрес



Harbour Towne Marina, 850 NE 3rd St,
STE 213, Dania, FL 33004