

FIRST TO MARKET — OCEAN YACHTS



Судостроитель: [Ocean Yachts](#)

Год постройки: 2005

Модель: Катер для спортивной рыбалки

Цена: ЦЕНА ЯХТЫ ПО ЗАПРОСУ

Местонахождение: United States

Длина общая: 52' 0" (15.85m)

Ширина: 16' 4" (4.98m)

Мин. осадка: 4' 4" (1.32m)

Крейс. скорость: 27 Kts. (31 MPH)

Макс. скорость: 34 Kts. (39 MPH)

Купить **First To Market — Ocean Yachts** а также выбрать подходящую вам яхту из нашего каталога яхт вам поможет опытный яхтенный брокер Андрей Шестаков. На сегодняшний день компания **Shestakov Yacht Sales Inc.** имеет большое количество яхт в собственном списке продаж, а также тесно сотрудничает со всеми крупными яхтенными производителями по всему миру.

Для того чтобы купить яхту **First To Market — Ocean Yachts** а также проконсультироваться по любому вопросу связанному с покупкой, продажей, чартером яхт позвоните по телефону **+7(918)465-66-44**.

ОГЛАВЛЕНИЕ

ОГЛАВЛЕНИЕ	2
ХАРАКТЕРИСТИКИ	4
Обзор	4
Основная информация	4
Размеры	4
Скорость, вместимость и масса	5
Размещение	5
Корпус и палуба	5
Информация о двигателе	5
ПОДРОБНОЕ ОПИСАНИЕ	6
Accommodations	6
Salon	6
Galley and Dinette	6
Master Stateroom	7
VIP Stateroom Forward	7
Companionway	7
Port Guest Stateroom	8
Starboard Guest Head	8
Fly Bridge	8
Electronics	8
Exterior, Cockpit and Fishing Equipment	9
Electrical and Mechanical	9
Additional Information	10
Исключения	10
Отказ от ответственности	10
ФОТОГРАФИИ	11
КОНТАКТЫ	19
Контактная информация	19

Телефоны	19
Время работы	19
Адрес	19

ХАРАКТЕРИСТИКИ

Обзор

Quoted from The Powerboat Guide:

The Ocean 52 Super Sport is a well-designed tournament fishing yacht with an affordable blend of performance, fishability and cruising elegance. David Martin, who designed most all of Ocean's hulls over the years, is well known for creating exceptionally roomy and innovative interiors. In the case of the 52 SS, the lush accommodations include three staterooms and three full heads—a big floor- plan indeed for a 52-footer. The forward cabin has a walkaround double berth and a private head in the forepeak, while the full- width master stateroom is aft, down a few steps from the hallway, where it's located beneath the elevated galley and dinette. On deck, the cockpit comes with all of the fishing amenities expected in a serious tournament machine. Additional features include a well-designed helm console, a built-in washer/dryer, and a fiber-glass hardtop.

Основная информация

Тип судна: Катер для спортивной рыбалки

Подкатегория: Convertible

Модельный год: 2005

Год постройки: 2005

Страна: United States

Размеры

Длина общая: 52' 0" (15.85m)

Ширина: 16' 4" (4.98m)

Мин. осадка: 4' 4" (1.32m)

Трапы: 17' 4" (5.28m)

Скорость, вместимость и масса

Крейс. скорость: 27 Kts. (31 MPH)

Крейсерская скорость поворота: 2000 Kts.

Макс. скорость: 34 Kts. (39 MPH)

Макс. скорость поворота: 2350 Kts.

Водоизмещение: 56000 Pounds

Вместимость воды: 150 Gallons

Объем топливного бака: 860 Gallons

Размещение

Всего кают: 3

Корпус и палуба

Материал корпуса: Fiberglass

Информация о двигателе

Производитель: MTU

Тип двигателя: Inboard

Тип топлива: Diesel

ПОДРОБНОЕ ОПИСАНИЕ

Accommodations

First To Market may offer the roomiest layout of any sport fish model near it's size. It boasts a large salon, good sized galley and dinette, and 3 staterooms and 3 heads below. The Master stateroom and forward VIP both have athwartship queen beds and private heads with stall showers. The third stateroom is starboard and features upper/lower bunks and has access to a full head with stall shower across the companionway. Most 60' Sportfish cannot match these accommodations.

Salon

The salon is entered through a sliding door to starboard. At the door, the electrical panel is easily accessed for switching power without having to trek through. To port is an L-shaped settee and starboard is an occasional chair. The TV is built into a beautifully crafted cabinet on the starboard outboard. The hi-lo cocktail table has leaves to open to a dining table.

- Cruisair airconditioning with reverse cycle heat
- overhead low voltage lighting
- L-shaped settee with ultra leather upholstery
- Storage under settee cushions
- End table with storage
- Flat panel Vizio TV
- Bose Lifestyle sound system
- Wood blinds
- Tasteful Tommy Bahama style decor

Galley and Dinette

The galley and dinette are up 2 steps from the salon allowing that area to be part of the entertainment. The dinette is L-shaped and covered in ultraleather distressed fabric.

- Scotsman icemaker
- Subzero drawer refrigerator
- Subzero drawer freezer
- Broan compactor
- Eurokera Force 10 3 burner stove
- Corian counter tops with integral sink
- Instahot faucet
- Soap dispenser
- In-Sink-Erator disposal

- Sharp Convection/Microwave oven
- Abundant storage in cabinetry and drawers
- Dinette table slides out for additional room
- Storage cabinets forward of dinette seating
- Bamboo flooring

Master Stateroom

The master suite is 2 steps down from the companionway and runs the full width of the boat. The bed is athwart ship and the head is ensuite for full privacy. There is good storage under the bed and in hanging lockers, cabinets and drawers.

- Cruisair airconditioning with reverse cycle heat and SMX controls
- Overhead low voltage lighting
- Dressing table
- Nightstands with drawer storage
- Overhead storage cabinets
- 2 hanging lockers
- Storage under bed
- Sole flat panel TV
- Decor accessories and lamps
- Master head features storage cabinets over vanity and along inboard side
- Vac U Flush toilet, stall shower and vanity with Corian top

VIP Stateroom Forward

The forward stateroom rivals the master found in most 52' Sportfish. The athwart ship bunk and head in the forepeak maximize the space.

- Cruisair airconditioning with reverse cycle heat and SMX controls
- Storage cabinetry overhead
- End tables with drawer storage
- Storage credenza with Sole flat panel TV above
- Large hanging locker
- Head in fore peak with stall shower, Vac U Flush toilet and vanity with Corian top and storage

Companionway

- Maytag Washer and dryer
- Central vac system
- Companionway storage locker

Port Guest Stateroom

- Upper/lower bunks
- Night table with storage
- Hanging locker
- Flat panel TV
- Airconditioning vent
- Easy access to starboard head just across the companionway

Starboard Guest Head

The starboard head services the port stateroom just across the companionway and acts as the day head.

- Vac U Flush toilet
- Stall shower
- Storage in vanity cabinets
- Sink with Corian tops

Fly Bridge

The flybridge features a large helm console with fiberglass helm pod and single lever controls. Pompanette helm chairs with removable cushions offer the captain and a companion comfortable seating. Guests also have comfortable seating with large cushioned seats to port and starboard. There is combination table and storage cabinet forward and a refrigerator for handy refreshments.

- Ocean factory hardtop
- Overhead hatches for ventilation
- Full enclosure
- Rupp outriggers
- Rocket launcher on aft flybridge rail
- Kenmore refrigerator

Electronics

- Garmin 6212 gps plotter (new 2014)
- Garmin GSD26 Chirp sounder with B175 chirp transducer
- Furuno NavNet VX2 with radar
- Simrad AP25 autopilot
- Raymarine ST60 Tridata
- Furuno RD30

- Standard Horizon GX1500S VHF
- Icom IC-M502 VHF
- Clarion stereo
- DDEC electronic engines displays
- DDEC single lever controls
- DDEC backup controls

Exterior, Cockpit and Fishing Equipment

- Fiberglass bow pulpit
- Windlass
- Aluminum bow rail
- Side hand rails above windows
- Teak covering boards
- Transom livewell
- Gunned mounted rod holders
- International fighting chair with rocket launcher and tackle drawer
- In deck fishboxes
- Cockpit freezer
- Cockpit engine room access
- Cockpit storage boxes under gunnels
- Cockpit cabinet starboard of salon door
- Step box
- Cockpit cover
- 6 man Viking valise liferaft

Electrical and Mechanical

- MTU Series 60 diesels with 662 engine hours
- Racor fuel filters for main engines
- Westerbeke generator
- Glendenning retractable shore power cord
- TV and telephone inlet
- 24 volt DC system with 8 12v batteries
- Sentry battery charger
- DC engine room lights
- Reverse oil change system
- Emergency Y-valves on sea water intakes
- 3 Bilge pumps
- Fresh and raw water washdowns
- Fish box macerator
- 3 Cruisair air conditioning compressors
- Domestic water system with pump and filter

Additional Information

First To Market has been brought to us to sell. Her low hours and great condition will make her the next to go. Call now for an appointment!

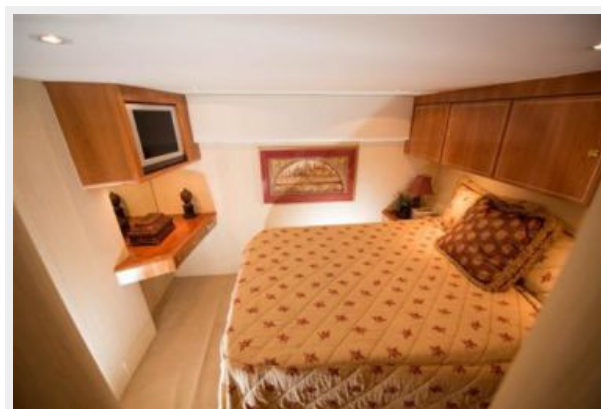
Исключения

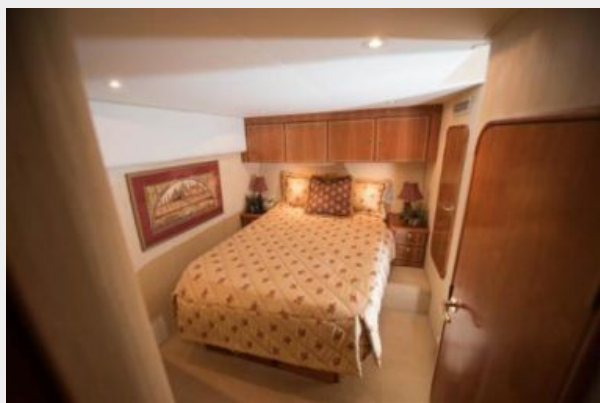
При продаже яхты исключаются личные вещи владельца.

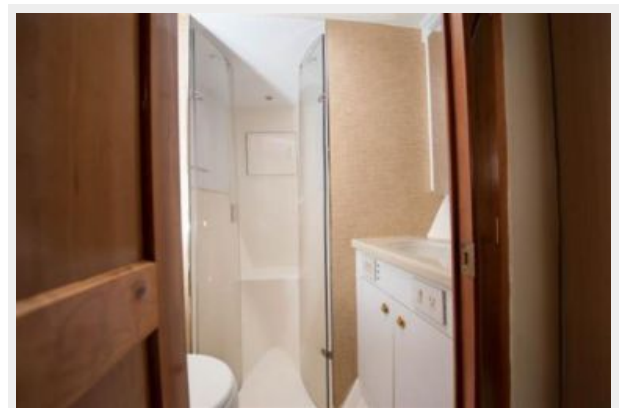
Отказ от ответственности

Компания предоставляет описание судна или яхты добросовестно, но не может гарантировать точность этой информации, а также не ручается за техническое состояние. Покупатель должен проинструктировать своих агентов или оценщиков исследовать представленную информацию более подробно, по собственному желанию. Продажа судна или яхты, изменение цены или снятие с продажи будет происходить без предварительного уведомления.

ФОТОГРАФИИ





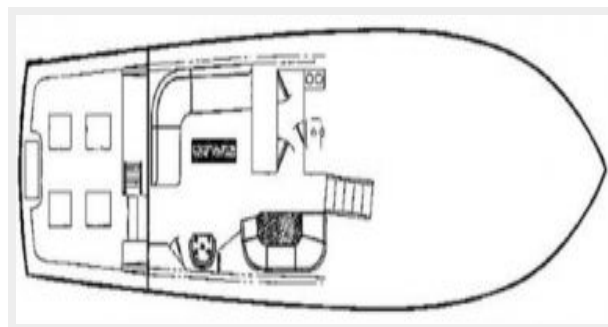
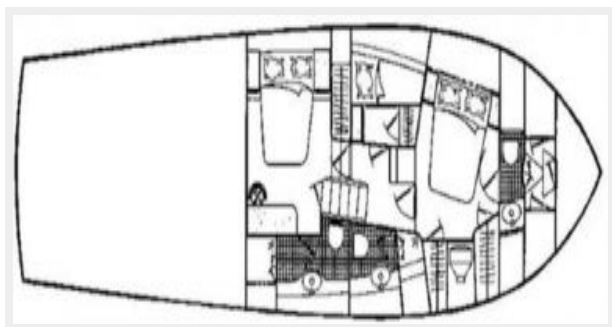












КОНТАКТЫ

Андрей Шестаков (Andrey Shestakov) – ведущий яхтенный брокер отдела продаж яхт и судов компании Shestakov Yacht Sales Inc. Официальный представитель Shestakov Yacht Sales Inc. для русскоговорящих клиентов в центральном офисе компании в Майами/Форт Лодердейл/Флорида/США.

Контактная информация

Email: andrey@shestakovyachtsales.com

Web: shestakovyachtsales.com

Телефоны

Краснодарский край: **+7(918)465-66-44**

США, Майами, Флорида: **+1(954)274-4435**

Время работы

Понедельник – Суббота: **9:00 - 21:00**
EDT

Воскресенье: **Закрето**

Адрес



Harbour Towne Marina, 850 NE 3rd St,
STE 213, Dania, FL 33004