

## BENETEAU 55 SENSE — BENETEAU



**Builder:** BENETEAU

**LOA:** 55' 0" (16.76m)

**Year Built:** 2016

**Model:** Cruising Sailboat

**Price:** PRICE ON APPLICATION

**Location:** United States

Our experienced yacht broker, Andrey Shestakov, will help you choose and buy a yacht that best suits your needs **Beneteau 55 Sense — BENETEAU** from our catalogue. Presently, at **Shestakov Yacht Sales Inc.**, we have a wide variety of yachts available on our sale's list. We also work in close contact with all the big yacht manufacturers from all over the world.

If you would like to buy a yacht **Beneteau 55 Sense — BENETEAU** or would like help answering any questions concerning purchasing, selling or chartering a yacht, please call **+1(954)274-4435**

# TABLE OF CONTENTS

TABLE OF CONTENTS	2
SPECIFICATIONS	3
Overview	3
Basic Information	3
Dimensions	3
Speed, Capacities and Weight	3
Accommodations	4
Hull and Deck Information	4
Engine Information	4
DETAILED INFORMATION	5
Accommodations	5
Galley	5
Electronics	5
Sail Plan & Rigging	6
Electric	6
Exclusions	6
Disclaimer	6
PHOTOS	7
CONTACTS	10
Contact details	10
Telephones	10
Office hours	10
Address	10

# SPECIFICATIONS

## Overview

The Beneteau Sense 55 is the queen of the Sense line and features a wedge-shaped cabin top, clean deck layout and hard chines.

This modern sailing yacht boasts large living spaces. One cannot help but to notice the roomy cockpit and an expansive salon, which is designed for entertaining.

Twin rudders and a low heel angle promote speed and comfort and optimize sea keeping ability.

\*\* This price is for a fully loaded and commissioned new boat delivered to Fort Lauderdale with an extensive list of desirable factory options. The base price, (advertised by some dealers) FOB factory, is substantially less. It is our policy and standard communication procedure to disclose what the new boat truly costs, ready for you to enjoy. We are happy to supply a detailed list of costs upon request.

MM

## Basic Information

**Category:** Cruising Sailboat

**Model Year:** 2016

**Year Built:** 2016

**Country:** United States

## Dimensions

**LOA:** 55' 0" (16.76m)

**LWL:** 52' 3" (15.93m)

**Clearance:** 78' 5" (23.90m)

**MFG Length:** 56' 5" (17.20m)

## Speed, Capacities and Weight

**Water Capacity:** 256 Gallons

**Fuel Capacity:** 110 Gallons

---

## Accommodations

---

**Total Cabins:** 3

**Total Heads:** 3

---

## Hull and Deck Information

---

**Hull Material:** Fiberglass

---

## Engine Information

---

**Engines:** 1

**Manufacturer:** Yanmar

**Fuel Type:** Diesel

---

# DETAILED INFORMATION

---

## Accommodations

---

As you walk through the companionway of this yacht, you'll immediately appreciate the gradual 3 step stair case and the little to no disconnect from the cockpit to down below. The flow and continuity is Amazing.

To Port, is a u-shaped settee with ample room for dining / and or entertaining. Additionally to port and aft of the settee is a well appointed nav station.

Island mounted and in the center of salon is a multi purpose piece of furniture that houses a retractable LED TV, a bench for more dinette seating, or counter space for preparing a meal.

To Starboard is a luxurious galley equipped with two sink basins, dishwasher, 3 burner stove, oven and Microwave.

As you continue to walk forward, you'll notice a two similar sized state rooms across from each other, both with ensuite heads.

Completely forward is the master stateroom with an island-style queen size bed and an ensuite head.

## Galley

---

- Lengthways galley counter
- Synthetic resin "grey" worktop
- Double Basin sink in "grey" synthetic resin
- 3 burner propane stove w/ oven. Stainless Steel on gimbal mountings
- Front and Top opening fridge
- Additional Top Opening Freezer

## Electronics

---

- 1x i70 Raymarine Screen (Loch, Speedometer, Depth Sounder) To Port Steering Console
- 1x Multifunction Touchscreen e95 LCD (GPS - Chart Plotter - Chart Reader
- Cartography. To Starboard Steering Console)
- 1x 1 i70 Screen (Windvane - Anemometer) To Starboard Steering Console
- Raymarine Autopilot P70
- Autopilot Smart Controller
- Radar High Definition (Radome Only)
- PC Interface Raymarine

- Multifunction Touchscreen e125 LCD - Chart Table
- VHF Ray49E US + AIS650 Transceiver
- Sirius XM satellite Weather, integrated into Raymarine System
- Chart table: Universal recharging station (Cellphone, MP3, GPS, PDA, etc...)
- Multimedia system: Radio CD/DVD PIONEER - Speakers BOSE
- ACOUSTIMASS® 3Bose speakers and Fusion System in owners and guest staterooms

## Sail Plan & Rigging

---

- Classic Mainsail - Full Batten w/ Lazy Jack System(796 Square Feet)
- Dacron Furling Genoa (105%)
- Electric coachroof winches
- Electric Genoa Winches

## Electric

---

- 7.5 KW Cummins Generator
- 2 House Batteries, 1 Engine Start and 1 Generator Start
- Battery Charger
- (2) 30 Amp Shore power legs
- Galvanic Isolator.
- Inverter

## Exclusions

---

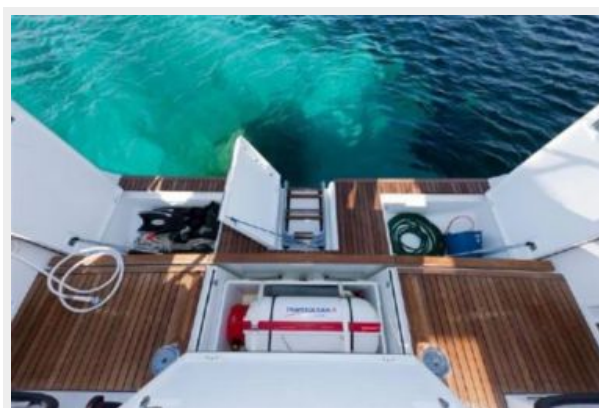
Owner's personal belongings.

## Disclaimer

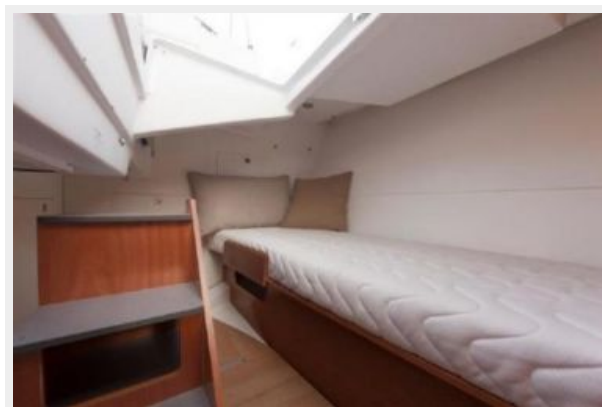
---

The Company offers the details of this vessel or yacht in good faith but cannot guarantee or warrant the accuracy of this information nor warrant the condition of the vessel. A buyer should instruct his representatives, agents, or his surveyors, to investigate such details as the buyer desires validated. This vessel or yacht is offered subject to prior sale, price change, or withdrawal without notice.

# PHOTOS











# CONTACTS

---

Andrey Shestakov, leading yacht broker of the sales department of Shestakov Yacht Sales Inc. Shestakov Yacht Sales Inc., the official representative of the Miami/Fort Lauderdale FL headquarters.

## Contact details

---

Email:  
**andrey@shestakovyachtsales.com**

Web: [shestakovyachtsales.com/en/](http://shestakovyachtsales.com/en/)

## Telephones

---

USA: **+1(954)274-4435**

## Office hours

---

Monday – Saturday: **9:00 - 21:00 EDT**

Sunday: **closed**

## Address

---



Harbour Towne Marina, 850 NE 3rd St,  
STE 213, Dania, FL 33004