

RO105 — HATTERAS



Builder: HATTERAS

Year Built: 2008

Model: Sport Fisherman

Price: PRICE ON APPLICATION

Location: United States

LOA: 77' 0" (23.47m)

Beam: 22' 0" (6.71m)

Max Draft: 5' 3" (1.60m)

Cruise Speed: 25 Kts. (29 MPH)

Max Speed: 33 Kts. (38 MPH)

Our experienced yacht broker, Andrey Shestakov, will help you choose and buy a yacht that best suits your needs **RO105 — HATTERAS** from our catalogue. Presently, at Shestakov Yacht Sales Inc., we have a wide variety of yachts available on our sale's list. We also work in close contact with all the big yacht manufacturers from all over the world.

If you would like to buy a yacht **RO105 — HATTERAS** or would like help answering any questions concerning purchasing, selling or chartering a yacht, please call **+1(954)274-4435**

TABLE OF CONTENTS

TABLE OF CONTENTS	2
SPECIFICATIONS	4
Overview	4
Basic Information	4
Dimensions	4
Speed, Capacities and Weight	4
Accommodations	5
Hull and Deck Information	5
Engine Information	5
DETAILED INFORMATION	6
Features & Upgrades	6
Main Salon & Dining	6
Galley	6
Accommodations	7
Safety & Fire Protection	8
Mechanical	9
Electrical Equipment	9
Communication, Navigation & A/V Equipment	9
Deck Equipment	10
Fly Bridge	11
Tower	11
Hull & Fore Deck	12
Exclusions	12
Disclaimer	12
PHOTOS	13
CONTACTS	26
Contact details	26
Telephones	26

Office hours	26
Address	26

SPECIFICATIONS

Overview

Many, many upgrades and redesigned spaces make this unique Hatteras a "not to be missed" yacht. Her knowledgeable owners and experienced Captain have built one of the finest sportfishers on the market. Expense was not an issue allowing a plethora of options to be incorporated into the build.

Along with the latest in sportfishing equipment are the many comforts and details added to the interior allowing for a first class fishing expedition that can be combined with a luxurious water holiday with family and friends.

Will trade up or down! Will trade for property!

Basic Information

Category: Sport Fisherman

Sub Category: Convertible

Model Year: 2008

Year Built: 2008

Country: United States

Vessel Top: Full / Tuna Tower

Cockpit: Yes

Dimensions

LOA: 77' 0" (23.47m)

Beam: 22' 0" (6.71m)

Max Draft: 5' 3" (1.60m)

Speed, Capacities and Weight

Cruise Speed: 25 Kts. (29 MPH)

Cruise Speed RPM: 1850 Kts.

Max Speed: 33 Kts. (38 MPH)

Max Speed RPM: 2520 Kts.

Water Capacity: 380 Gallons

Fuel Capacity: 3000 Gallons

Accommodations

Total Cabins: 4

Total Heads: 5

Hull and Deck Information

Hull Material: Fiberglass

Deck Material: Fiberglass

Hull Finish: Fiberglass

Engine Information

Engines: 2

Manufacturer: MTU

Model: 16V 2000 M93

Engine Type: Inboard

Fuel Type: Diesel

DETAILED INFORMATION

Features & Upgrades

- Custom \$450k High Seas Navigation system
- Upgraded 2400 hp common rail MTU engines
- 25' additional Mezzanine seating
- Upsized A/C system
- A/C back up water pumps
- Pick up sea chests
- Stern & Bow thruster back up
- Underwater lights
- LED lighting-tower & stairs
- Mini drop down docking station (P)
- Natural teak sole
- HMC mattresses on all berths
- Upgraded water delivery system
- Pneumatic door entry
- 2 Additional bar stools at breakfast bar

Main Salon & Dining

- Custom, overstuffed L-settee w/down cushions, storage below
- Custom cocktail table
- Day head
- Spiral cherry wood stairway to fly bridge
- 50" HD plasma TV w/Omni directional sound system
- U-shaped dinette w/high gloss table forward, starboard

Galley

- Galley on Deck-port side
- Large wrap around counter/breakfast bar w/5 stools
- Sub-Zero refrigerator/freezer
- Trash compactor
- Garbage disposal
- 4 Burner ceramic cooktop
- Microwave/Convection oven
- Hunter Douglas Lumiere blinds
- 2 x Undercounter Sub-zero refrigerators
- 2 Drawer Sub-zero freezer drawers
- Paykel dishwasher

- Mahogany plank sole
- Stone counter tops
- Icemaker

2 x Walk-in Pantries, forward

Port:

- Amtico sole
- 2 x Sub-zero freezer drawers
- 150 sq ft storage area
- DVR recorder system for cockpit & bridge cameras
- Air-conditioned

Starboard:

- Central Vacuum unit
- Amtico sole
- Audio equipment
- Kaleidoscope
- Full size washer/dryer, stacked

Accommodations

USELESS accommodates 8 guests in 4 double staterooms each with en suite head and shower. There is also a cabin & head for crew.

MASTER Suite-full beam, amidship

- King size centerline berth w/HMC mattress
- 3 x Cedar lined hanging lockers
- Nightstands w/drawers (p & s)
- 50" LCD TV, DVD/CD with speakers and 3-2-1 GS w/AM/FM receiver
- Built in desk w/Henredon opera arm chair
- Seagrass loveseat
- Gun locker & safe in closet
- Smoke & CO detectors
- A/C controls
- En suite head w/stall shower
- En suite office w/2nd TV

VIP Stateroom-forward

- Queen centerline walk-around berth w/cedar lined storage beneath
- Nightstands (p & s)

- Built-in dressers (p & s)
- Cedar lined hanging lockers
- 20" LCD TV
- Smoke & CO detector
- Screened overhead hatch w/privacy cover
- En suite head w/stall shower

GUEST Cabin-Starboard

- Queen berth with storage beneath
- Nightstand
- Cedar lined hanging locker
- 20" LCD TV, CD/DVD player w/speakers, AM/FM stereo receiver
- Smoke & CO detectors
- Blanket locker w/center shelf
- Overhead storage lockers
- En suite head w/stall shower

GUEST Cabin-Port

- Twin berths w/storage beneath
- Nightstand
- Cedar lined hanging locker
- 20" LCD TV, CD/DVD player w/speakers, AM/FM stereo receiver
- Smoke & CO detectors
- Blanket locker w/center shelf
- En suite head w/stall shower

CREW QUARTERS-access through engine room door

- Over/under twin berths w/storage below
- Cedar lined hanging locker
- AM/FM stereo receiver w/CD player & speakers
- Smoke & CO detectors
- Emergency exit through aft galley cabinetry
- En suite head

Safety & Fire Protection

- Sony CCTV system w/6 cameras
- FM 200 fire suppression system
- 11 x Handheld fire extinguishers
- Fire alarm panel w/heat, smoke, CO detectors
- 8 Person life raft
- EPIRBS

- Life Ring

Mechanical

- Twin MTU 16V M93's @2,400 hp each, Common Rail
- ZF 3360 gear boxes
- AC compressed air system
- 9 x 24v Bilge & sump pumps, 7 @3700 gph and 2 @2000 gph
- 50 gal. Electric water heater
- Reversible oil changing system for engines, gear & generator
- A/C compressors & pumps
- Isolated discharge sea chests
- Monitoring consoles for mains w/all gauges & start/stop switches
- Fiberglass fuel, water & holding tanks
- Electric fuel transfer system
- 2 x 27.5kW Onan generators w/remote start & sound shield
- Watermaker
- Freshwater back up pump
- Water delivery kit
- Pick up sea chests
- Back up sea water pump
- Custom bow thruster controls incorporated into engine control levers at both helm stations

Electrical Equipment

- 2 x 27.5kW Onan generators
- 2 x 24v heavy duty battery banks
- Gel/lead acid compatible 240v aut/programmable battery charger
- 118k BTU Reverse cycle heat and air w/individual controls
- Computer controlled Ethernet monitoring system w/LCD touch screen display
- 2 x 240v, 100 amp, shore cords

Communication, Navigation & A/V Equipment

- MTU engine steering controls
- 25kW Furuno radar transceiver
- Furuno 6' open array antenna
- Furuno PB100 Ultrasonic weather station sensor
- Simrad autopilot
- ICOM 640 VHF
- Raymarine CAM 100 engine room camera
- 2 x Furuno Navnet chartplotter/fish finder w/7" display (tower)

- ICOM IC-HM162SW remote microphone
- Furuno Navnet VX2 chart plotter (aft bridge)
- VEI Nav computer
- VEI 17" plotter display
- VEI 17" radar display
- Furuno BBFF3 Network sounder
- VEI 17" sounder display
- VEI 17" GPS and plotter display
- ICOM M604 VHF
- Latham sportfish camera
- Simrad AP26 2nd station (aft bridge)
- Furuno Navnet VX2 radar/plotter
- Furuno FA AIS transponder w/4.5" display
- VEI DM Series 17" camera display
- 3 x Furuno RD30 digital depth/temp display (PH, aft bridge, tower)
- Panasonic Control Unit, Cordless phone & Speaker phone
- Tellar Tri-mode cell phone
- Carlisle & Finch night finder searchlight and thermal camera
- Furuno Auto Plotter & Digital heading sensor
- SEATEL Coastal 24 SAT TV system
- Radio Shack video amplifier
- ICOM M422 VHF/hailer (tower)

Deck Equipment

- 192 sq ft. cockpit w/teak deck
- 25 ft. Mezzanine seating
- Polished anodized aluminum ladder to flybridge
- Fiberglass cockpit boarding step box w/storage
- Custom entertainment system
- Hinged seat w/engine room access
- 2 x Tackle drawers w/perforated SS bottom
- 10 cu. ft. Bait freezer
- 3 x 20 gal. storage tubs
- Transom Fishbox w/recirculating livewell
- Eskimo chipped ice machine
- Verticle tackle center
- Fresh water washdown w/foredeck outlet
- Custom Large Bluewater fighting chair w/offset pedestal
- 2 x 65" fish boxes w/macerator, flush in deck w/gas hinges
- Storage in steps to deckhouse, step labeled "Refrigerated" is chill box
- Aluminum mounting plate laminated in deck for fighting chair
- 4 x Polished SS rod holders, flush mount

- 4 x Underwater lights
- 10 cu. ft. Freezer
- Teak coaming boards, covering boards & cockpit sole
- Teak mezzanine deck
- 6 x Pompanette wing board rod holders
- 3 x 15 degree rod holders installed in p & s coverboards

Fly Bridge

Fully enclosed, luxurious décor with a state of the art helm

- Computer controlled monitoring system w/touch screen display
- Custom bow thruster controls integrated into engine controls (2 stations)
- Custom High Seas Nav package
- Pod-style forward control station w/single-lever and throttle controls w/engine synchronizer, emergency back-up, hydraulic power steering and tachs
- Wing controls (P)
- Outrigger cameras, thermal camera, night vision camera
- Polished aluminum ladder, cockpit to fly bridge
- Polished aluminum rails
- L-settee w/rod storage
- Custom double pedestal table, w/ blue pearl, bullnose edged top
- Riding seats (p & s)
- Pompanette helm chair
- Swing door to exterior aft station
- 32" Plasma drop down TV, DVD/CD, AM/FM
- Dry bar w/stone countertop, refrigerator/icemaker & storage
- Smoke & CO detectors

Tower

- Full Pipewelders tuna tower
- 96" Sunshade w/molded dome mount
- One piece molded standing platform
- Washdown water w/bladder tank for increased pressure
- 2 x Hydraulic outriggers w/bridge release
- 15' Center rigger
- Red, white & blue LED lights
- Custom bench seat
- 15' Center rigger
- Hydro-lock outrigger locking system
- Custom ladder steps

Hull & Fore Deck

- Hi gloss teak transom
- Marlin blue boot stripe w/white accent
- Polymar/copper-based anti-fouling bottom paint
- Non skid decks
- Duel trumpet air horn
- SS Trim tabs
- Manganese bronze struts
- Alloy 22 high-strength 4" prop shafts & SS rudders
- 8 Blade Nibral hi-performance props
- Fiberglass pulpit w/welded, polished SS anchor chute & roller
- Fresh water washdown
- 2500 lb. Anchor windlass w/deck mounted controls
- 90 lb. Danforth anchor w/25' galvanized chain and 300' rope

Exclusions

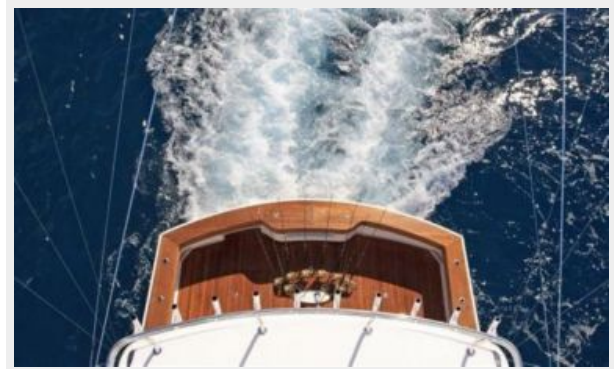
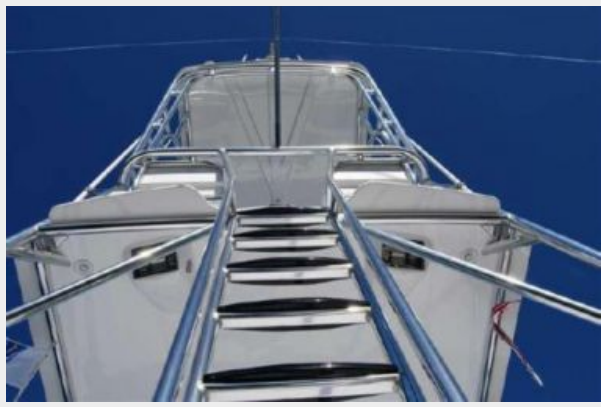
Owner's personal belongings.

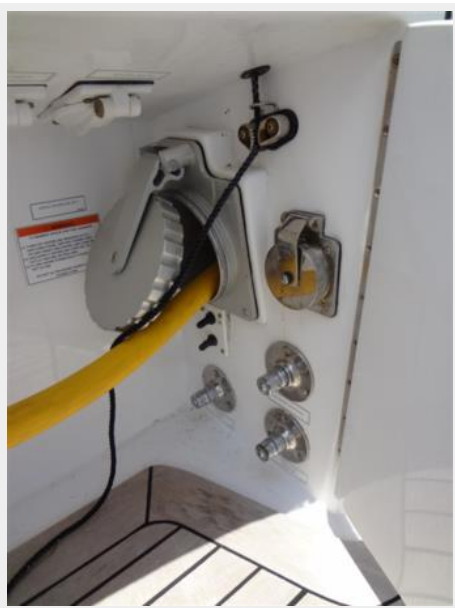
Disclaimer

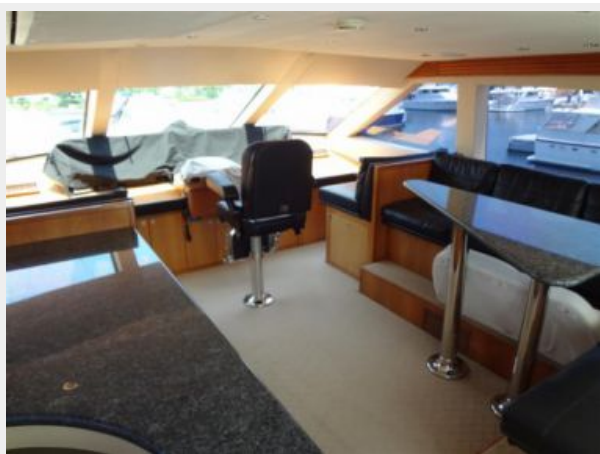
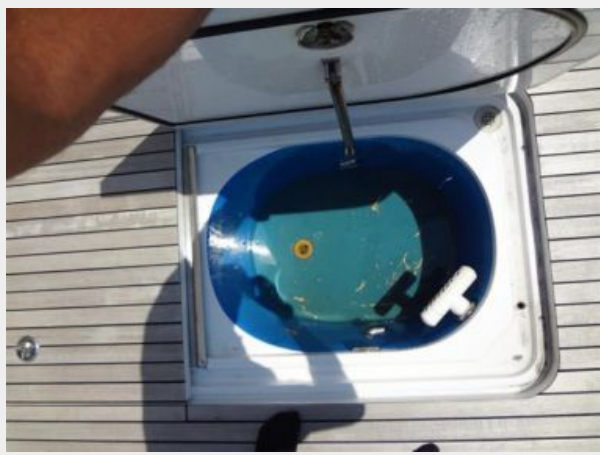
The Company offers the details of this vessel or yacht in good faith but cannot guarantee or warrant the accuracy of this information nor warrant the condition of the vessel. A buyer should instruct his representatives, agents, or his surveyors, to investigate such details as the buyer desires validated. This vessel or yacht is offered subject to prior sale, price change, or withdrawal without notice.

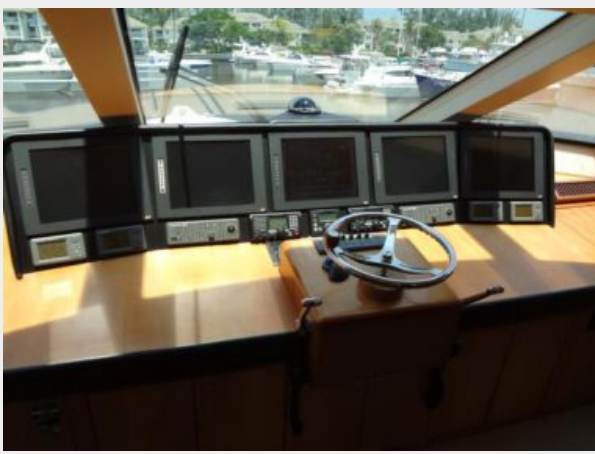
PHOTOS

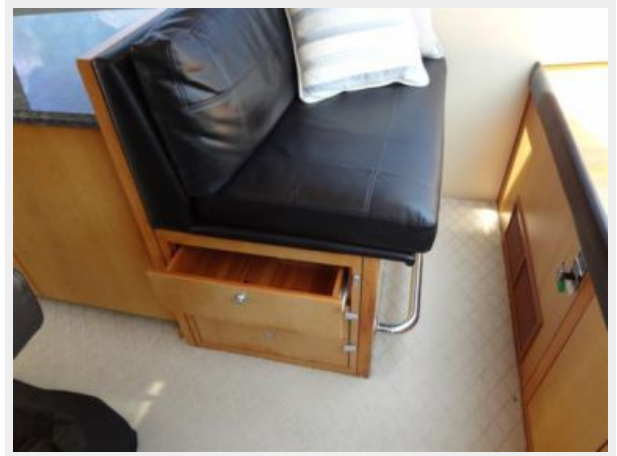


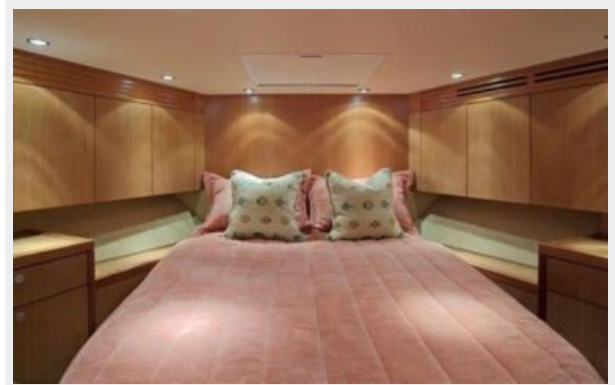
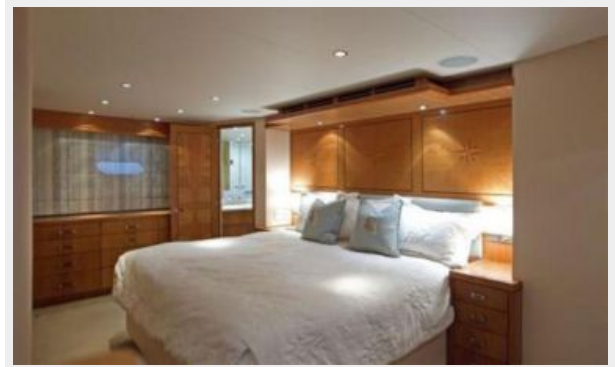








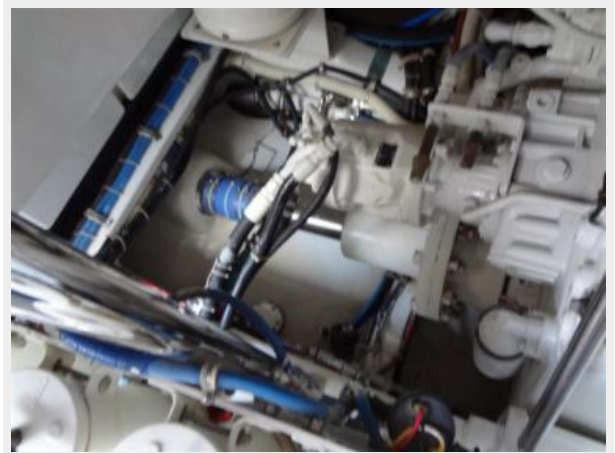
















CONTACTS

Andrey Shestakov, leading yacht broker of the sales department of Shestakov Yacht Sales Inc. Shestakov Yacht Sales Inc., the official representative of the Miami/Fort Lauderdale FL headquarters.

Contact details

Email: andrey@shestakovyachtsales.com

Web: shestakovyachtsales.com/en/

Telephones

USA: +1(954)274-4435

Office hours

Monday – Saturday: **9:00 - 21:00** EDT

Sunday: **closed**

Address



Harbour Towne Marina, 850 NE 3rd St,
STE 213, Dania, FL 33004