

RO105 — HATTERAS



Судостроитель: HATTERAS

Год постройки: 2008

Модель: Катер для спортивной рыбалки

Цена: **ЦЕНА ЯХТЫ ПО ЗАПРОСУ**

Местонахождение: United States

Длина общая: 77' 0" (23.47m)

Ширина: 22' 0" (6.71m)

Макс. осадка: 5' 3" (1.60m)

Крейс. скорость: 25 Kts. (29 MPH)

Макс. скорость: 33 Kts. (38 MPH)

Купить **RO105 — HATTERAS** а также выбрать подходящую вам яхту из нашего каталога яхт вам поможет опытный яхтенный брокер Андрей Шестаков. На сегодняшний день компания **Shestakov Yacht Sales Inc.** имеет большое количество яхт в **собственном списке продаж**, а также тесно сотрудничает со всеми крупными яхтенными производителями по всему миру.

Для того чтобы купить яхту **RO105 — HATTERAS** а также проконсультироваться по любому вопросу связанному с покупкой, продажей, чартером яхт позвоните по телефону **+7(918)465-66-44**.

ОГЛАВЛЕНИЕ

ОГЛАВЛЕНИЕ	2
ХАРАКТЕРИСТИКИ	4
Обзор	4
Основная информация	4
Размеры	4
Скорость, вместимость и масса	5
Размещение	5
Корпус и палуба	5
Информация о двигателе	5
ПОДРОБНОЕ ОПИСАНИЕ	6
Features & Upgrades	6
Main Salon & Dining	6
Galley	6
Accommodations	7
Safety & Fire Protection	8
Mechanical	9
Electrical Equipment	9
Communication, Navigation & A/V Equipment	9
Deck Equipment	10
Fly Bridge	11
Tower	11
Hull & Fore Deck	12
Исключения	12
Отказ от ответственности	12
ФОТОГРАФИИ	13
КОНТАКТЫ	26
Контактная информация	26
Телефоны	26

Время работы	26
Адрес	26

ХАРАКТЕРИСТИКИ

Обзор

Many, many upgrades and redesigned spaces make this unique Hatteras a "not to be missed" yacht. Her knowledgeable owners and experienced Captain have built one of the finest sportfishers on the market. Expense was not an issue allowing a plethora of options to be incorporated into the build.

Along with the latest in sportfishing equipment are the many comforts and details added to the interior allowing for a first class fishing expedition that can be combined with a luxurious water holiday with family and friends.

Will trade up or down! Will trade for property!

Основная информация

Тип судна: Катер для спортивной рыбалки

Подкатегория: Convertible

Модельный год: 2008

Год постройки: 2008

Страна: United States

Верх: Full / Tuna Tower

Кубрик: Да

Размеры

Длина общая: 77' 0" (23.47m)

Ширина: 22' 0" (6.71m)

Макс. осадка: 5' 3" (1.60m)

Скорость, вместимость и масса

Крейс. скорость: 25 Kts. (29 MPH)

Крейсерская скорость поворота: 1850 Kts.

Макс. скорость: 33 Kts. (38 MPH)

Макс. скорость поворота: 2520 Kts.

Вместимость воды: 380 Gallons

Объем топливного бака: 3000 Gallons

Размещение

Всего кают: 4

Всего ком. состава: 5

Корпус и палуба

Материал корпуса: Fiberglass

Материал палубы: Fiberglass

Отделка корпуса: Fiberglass

Информация о двигателе

Двигатели: 2

Производитель: MTU

Модель: 16V 2000 M93

Тип двигателя: Inboard

Тип топлива: Diesel

ПОДРОБНОЕ ОПИСАНИЕ

Features & Upgrades

- Custom \$450k High Seas Navigation system
- Upgraded 2400 hp common rail MTU engines
- 25' additional Mezzanine seating
- Upsized A/C system
- A/C back up water pumps
- Pick up sea chests
- Stern & Bow thruster back up
- Underwater lights
- LED lighting-tower & stairs
- Mini drop down docking station (P)
- Natural teak sole
- HMC mattresses on all berths
- Upgraded water delivery system
- Pneumatic door entry
- 2 Additional bar stools at breakfast bar

Main Salon & Dining

- Custom, overstuffed L-settee w/down cushions, storage below
- Custom cocktail table
- Day head
- Spiral cherry wood stairway to fly bridge
- 50" HD plasma TV w/Omni directional sound system
- U-shaped dinette w/high gloss table forward, starboard

Galley

- Galley on Deck-port side
- Large wrap around counter/breakfast bar w/5 stools
- Sub-Zero refrigerator/freezer
- Trash compactor
- Garbage disposal
- 4 Burner ceramic cooktop
- Microwave/Convection oven
- Hunter Douglas Lumiere blinds
- 2 x Undercounter Sub-zero refrigerators
- 2 Drawer Sub-zero freezer drawers
- Paykel dishwasher

- Mahogany plank sole
- Stone counter tops
- Icemaker

2 x Walk-in Pantries, forward

Port:

- Amtico sole
- 2 x Sub-zero freezer drawers
- 150 sq ft storage area
- DVR recorder system for cockpit & bridge cameras
- Air-conditioned

Starboard:

- Central Vacuum unit
- Amtico sole
- Audio equipment
- Kaleidoscope
- Full size washer/dryer, stacked

Accommodations

USELESS accommodates 8 guests in 4 double staterooms each with en suite head and shower. There is also a cabin & head for crew.

MASTER Suite-full beam, amidship

- King size centerline berth w/HMC mattress
- 3 x Cedar lined hanging lockers
- Nightstands w/drawers (p & s)
- 50" LCD TV, DVD/CD with speakers and 3-2-1 GS w/AM/FM receiver
- Built in desk w/Henredon opera arm chair
- Seagrass loveseat
- Gun locker & safe in closet
- Smoke & CO detectors
- A/C controls
- En suite head w/stall shower
- En suite office w/2nd TV

VIP Stateroom-forward

- Queen centerline walk-around berth w/cedar lined storage beneath
- Nightstands (p & s)

- Built-in dressers (p & s)
- Cedar lined hanging lockers
- 20" LCD TV
- Smoke & CO detector
- Screened overhead hatch w/privacy cover
- En suite head w/stall shower

GUEST Cabin-Starboard

- Queen berth with storage beneath
- Nightstand
- Cedar lined hanging locker
- 20" LCD TV, CD/DVD player w/speakers, AM/FM stereo receiver
- Smoke & CO detectors
- Blanket locker w/center shelf
- Overhead storage lockers
- En suite head w/stall shower

GUEST Cabin-Port

- Twin berths w/storage beneath
- Nightstand
- Cedar lined hanging locker
- 20" LCD TV, CD/DVD player w/speakers, AM/FM stereo receiver
- Smoke & CO detectors
- Blanket locker w/center shelf
- En suite head w/stall shower

CREW QUARTERS-access through engine room door

- Over/under twin berths w/storage below
- Cedar lined hanging locker
- AM/FM stereo receiver w/CD player & speakers
- Smoke & CO detectors
- Emergency exit through aft galley cabinetry
- En suite head

Safety & Fire Protection

- Sony CCTV system w/6 cameras
- FM 200 fire suppression system
- 11 x Handheld fire extinguishers
- Fire alarm panel w/heat, smoke, CO detectors
- 8 Person life raft
- EPIRBS

- Life Ring

Mechanical

- Twin MTU 16V M93's @2,400 hp each, Common Rail
- ZF 3360 gear boxes
- AC compressed air system
- 9 x 24v Bilge & sump pumps, 7 @3700 gph and 2 @2000 gph
- 50 gal. Electric water heater
- Reversible oil changing system for engines, gear & generator
- A/C compressors & pumps
- Isolated discharge sea chests
- Monitoring consoles for mains w/all gauges & start/stop switches
- Fiberglass fuel, water & holding tanks
- Electric fuel transfer system
- 2 x 27.5kW Onan generators w/remote start & sound shield
- Watermaker
- Freshwater back up pump
- Water delivery kit
- Pick up sea chests
- Back up sea water pump
- Custom bow thruster controls incorporated into engine control levers at both helm stations

Electrical Equipment

- 2 x 27.5kW Onan generators
- 2 x 24v heavy duty battery banks
- Gel/lead acid compatible 240v aut/programmable battery charger
- 118k BTU Reverse cycle heat and air w/individual controls
- Computer controlled Ethernet monitoring system w/LCD touch screen display
- 2 x 240v, 100 amp, shore cords

Communication, Navigation & A/V Equipment

- MTU engine steering controls
- 25kW Furuno radar transceiver
- Furuno 6' open array antenna
- Furuno PB100 Ultrasonic weather station sensor
- Simrad autopilot
- ICOM 640 VHF
- Raymarine CAM 100 engine room camera
- 2 x Furuno Navnet chartplotter/fish finder w/7" display (tower)

- ICOM IC-HM162SW remote microphone
- Furuno Navnet VX2 chart plotter (aft bridge)
- VEI Nav computer
- VEI 17" plotter display
- VEI 17" radar display
- Furuno BBFF3 Network sounder
- VEI 17" sounder display
- VEI 17" GPS and plotter display
- ICOM M604 VHF
- Latham sportfish camera
- Simrad AP26 2nd station (aft bridge)
- Furuno Navnet VX2 radar/plotter
- Furuno FA AIS transponder w/4.5" display
- VEI DM Series 17" camera display
- 3 x Furuno RD30 digital depth/temp display (PH, aft bridge, tower)
- Panasonic Control Unit, Cordless phone & Speaker phone
- Tellar Tri-mode cell phone
- Carlisle & Finch night finder searchlight and thermal camera
- Furuno Auto Plotter & Digital heading sensor
- SEATEL Coastal 24 SAT TV system
- Radio Shack video amplifier
- ICOM M422 VHF/hailer (tower)

Deck Equipment

- 192 sq ft. cockpit w/teak deck
- 25 ft. Mezzanine seating
- Polished anodized aluminum ladder to flybridge
- Fiberglass cockpit boarding step box w/storage
- Custom entertainment system
- Hinged seat w/engine room access
- 2 x Tackle drawers w/perforated SS bottom
- 10 cu. ft. Bait freezer
- 3 x 20 gal. storage tubs
- Transom Fishbox w/recirculating livewell
- Eskimo chipped ice machine
- Verticle tackle center
- Fresh water washdown w/foredeck outlet
- Custom Large Bluewater fighting chair w/offset pedestal
- 2 x 65" fish boxes w/macerator, flush in deck w/gas hinges
- Storage in steps to deckhouse, step labeled "Refrigerated" is chill box
- Aluminum mounting plate laminated in deck for fighting chair
- 4 x Polished SS rod holders, flush mount

- 4 x Underwater lights
- 10 cu. ft. Freezer
- Teak coaming boards, covering boards & cockpit sole
- Teak mezzanine deck
- 6 x Pompanette wing board rod holders
- 3 x 15 degree rod holders installed in p & s coverboards

Fly Bridge

Fully enclosed, luxurious décor with a state of the art helm

- Computer controlled monitoring system w/touch screen display
- Custom bow thruster controls integrated into engine controls (2 stations)
- Custom High Seas Nav package
- Pod-style forward control station w/single-lever and throttle controls w/engine synchronizer, emergency back-up, hydraulic power steering and tachs
- Wing controls (P)
- Outrigger cameras, thermal camera, night vision camera
- Polished aluminum ladder, cockpit to fly bridge
- Polished aluminum rails
- L-settee w/rod storage
- Custom double pedestal table, w/ blue pearl, bullnose edged top
- Riding seats (p & s)
- Pompanette helm chair
- Swing door to exterior aft station
- 32" Plasma drop down TV, DVD/CD, AM/FM
- Dry bar w/stone countertop, refrigerator/icemaker & storage
- Smoke & CO detectors

Tower

- Full Pipewelders tuna tower
- 96" Sunshade w/molded dome mount
- One piece molded standing platform
- Washdown water w/bladder tank for increased pressure
- 2 x Hydraulic outriggers w/bridge release
- 15' Center rigger
- Red, white & blue LED lights
- Custom bench seat
- 15' Center rigger
- Hydro-lock outrigger locking system
- Custom ladder steps

Hull & Fore Deck

- Hi gloss teak transom
- Marlin blue boot stripe w/white accent
- Polymar/copper-based anti-fouling bottom paint
- Non skid decks
- Duel trumpet air horn
- SS Trim tabs
- Manganese bronze struts
- Alloy 22 high-strength 4" prop shafts & SS rudders
- 8 Blade Nibral hi-performance props
- Fiberglass pulpit w/welded, polished SS anchor chute & roller
- Fresh water washdown
- 2500 lb. Anchor windlass w/deck mounted controls
- 90 lb. Danforth anchor w/25' galvanized chain and 300' rope

Исключения

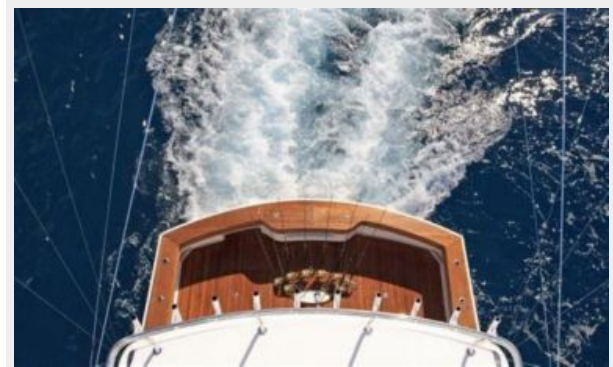
При продаже яхты исключаются личные вещи владельца.

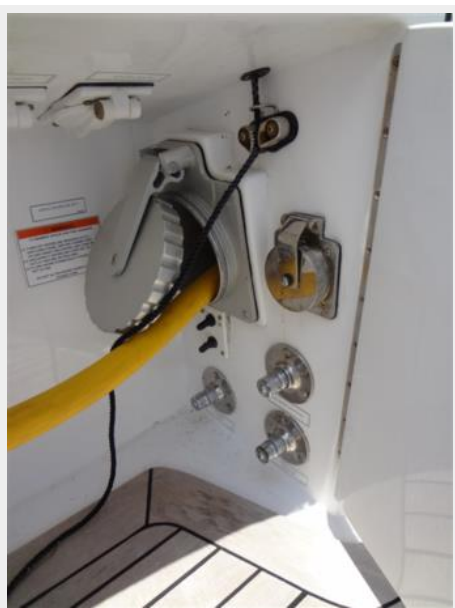
Отказ от ответственности

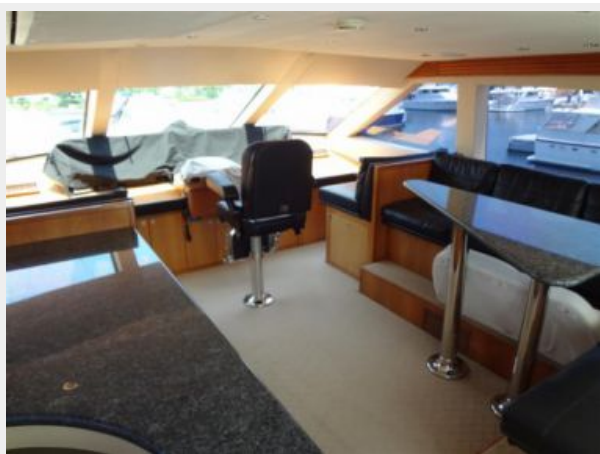
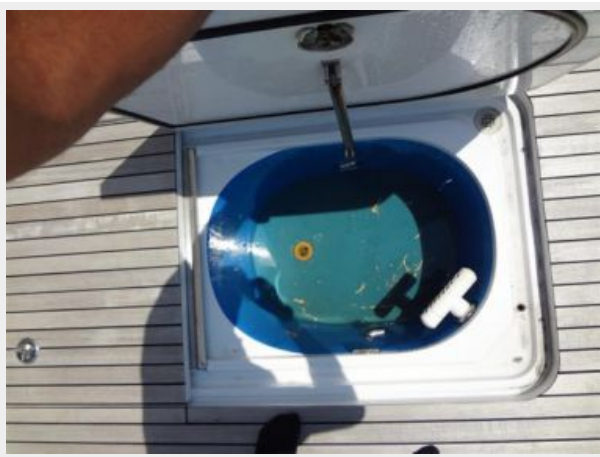
Компания предоставляет описание судна или яхты добросовестно, но не может гарантировать точность этой информации, а также не ручается за техническое состояние. Покупатель должен проинструктировать своих агентов или оценщиков исследовать представленную информацию более подробно, по собственному желанию. Продажа судна или яхты, изменение цены или снятие с продажи будет происходить без предварительного уведомления.

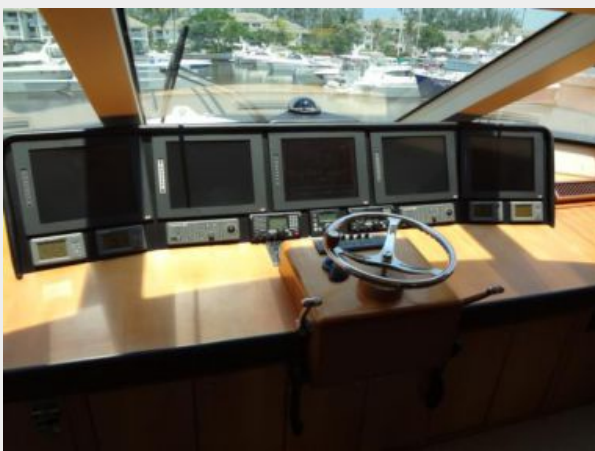
ФОТОГРАФИИ

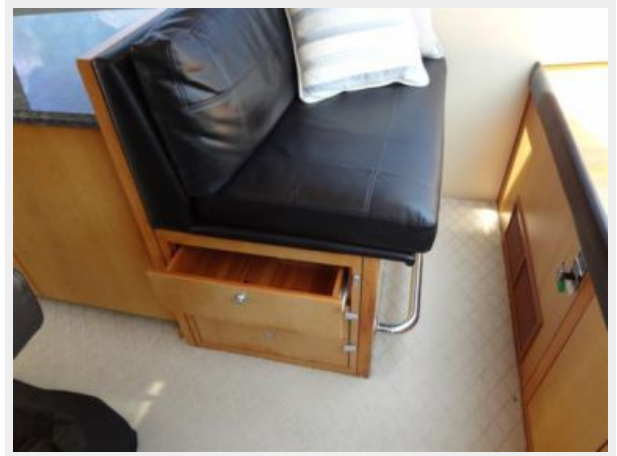


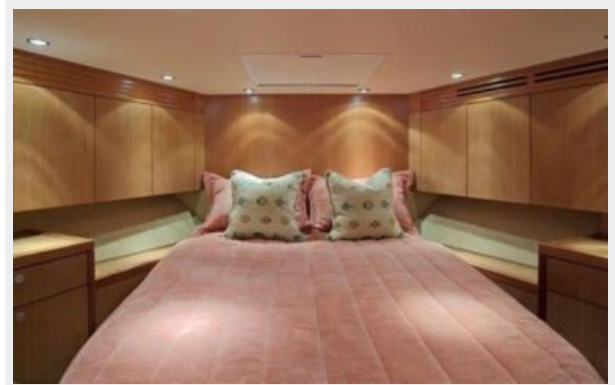
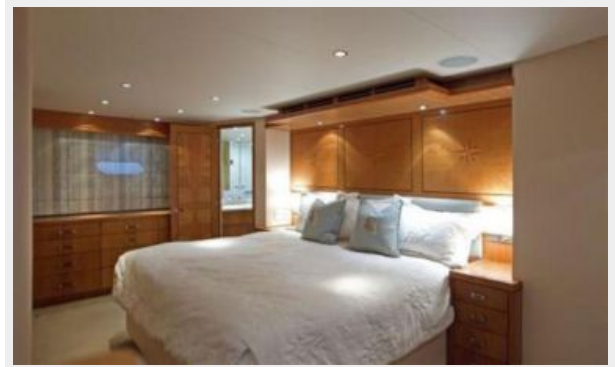






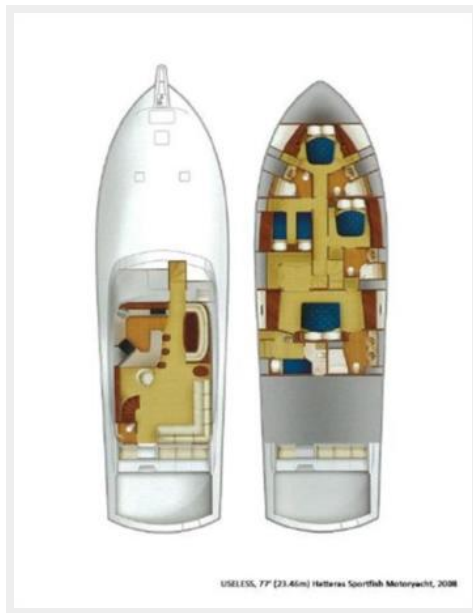


















КОНТАКТЫ

Андрей Шестаков (Andrey Shestakov) – ведущий яхтенный брокер отдела продаж яхт и судов компании Shestakov Yacht Sales Inc. Официальный представитель Shestakov Yacht Sales Inc. для русскоговорящих клиентов в центральном офисе компании в Майами/Форт Лодердейл/Флорида/США.

Контактная информация

Email: andrey@shestakovyachtsales.com

Web: shestakovyachtsales.com

Телефоны

Краснодарский край: **+7(918)465-66-44**

США, Майами, Флорида: **+1(954)274-4435**

Время работы

Понедельник – Суббота: **9:00 - 21:00**
EDT

Воскресенье: **Закрето**

Адрес



Harbour Towne Marina, 850 NE 3rd St,
STE 213, Dania, FL 33004