

## SL96 AMERICAS EDITION — SANLORENZO



**Builder:** SANLORENZO

**Year Built:** 2015

**Model:** Motor Yacht

**Price:** PRICE ON APPLICATION

**Location:** United States

**LOA:** 96' 0" (29.26m)

**Beam:** 22' 1" (6.73m)

**Max Draft:** 6' 3" (1.91m)

**Cruise Speed:** 25 Kts. (29 MPH)

**Max Speed:** 28 Kts. (32 MPH)

Our experienced yacht broker, Andrey Shestakov, will help you choose and buy a yacht that best suits your needs **SL96 Americas Edition — SANLORENZO** from our catalogue. Presently, at Shestakov Yacht Sales Inc., we have a wide variety of yachts available on our sale's list. We also work in close contact with all the big yacht manufacturers from all over the world.

If you would like to buy a yacht **SL96 Americas Edition — SANLORENZO** or would like help answering any questions concerning purchasing, selling or chartering a yacht, please call **+1(954)274-4435**

# TABLE OF CONTENTS

|                              |    |
|------------------------------|----|
| TABLE OF CONTENTS            | 2  |
| SPECIFICATIONS               | 5  |
| Overview                     | 5  |
| Basic Information            | 5  |
| Dimensions                   | 5  |
| Speed, Capacities and Weight | 5  |
| Accommodations               | 6  |
| Hull and Deck Information    | 6  |
| Engine Information           | 6  |
| DETAILED INFORMATION         | 7  |
| OVERVIEW                     | 7  |
| ACCOMODATION                 | 7  |
| SALON & GALLEY               | 7  |
| FLYBRIDGE & BOW AREAS        | 7  |
| DECK & EXTERIOR              | 8  |
| PROPULSION                   | 8  |
| ENGINE ROOM EQUIPMENT        | 8  |
| ELECTRICAL                   | 8  |
| ELECTRONICS & COMMUNICATION  | 8  |
| Exclusions                   | 8  |
| Disclaimer                   | 9  |
| PHOTOS                       | 10 |
| PROFILE                      | 10 |
| SUNSET PROFILE               | 10 |
| AFT PROFILE                  | 10 |
| TENDER GARAGE                | 10 |
| FLYBRIDGE LOUNGE             | 10 |
| FLYBRIDGE DINING             | 10 |

|                                                    |    |
|----------------------------------------------------|----|
| AFT DECK                                           | 10 |
| AFT DECK                                           | 10 |
| SALON                                              | 11 |
| SALON TERRACE                                      | 11 |
| DINING TABLE COLLAPSED                             | 11 |
| DINING TABLE OPEN                                  | 11 |
| COFFEE TABLE WITH INTEGRATED TOUCH SCREEN COMPUTER | 11 |
| SIDE TABLE CHARGING STATION CLOSED                 | 11 |
| SIDE TABLE WITH INTEGRATED CHARGING STATION        | 12 |
| MASTER STATEROOM                                   | 12 |
| MASTER STATEROOM                                   | 12 |
| MASTER STATEROOM                                   | 12 |
| MASTER VANITY                                      | 12 |
| MASTER FOYER                                       | 12 |
| LOWER DECK FOYER                                   | 13 |
| GALLEY                                             | 13 |
| VIP STATEROOM                                      | 13 |
| GUEST STATEROOM                                    | 13 |
| GUEST HEAD                                         | 13 |
| CONVERTIBLE TWIN OR FULL BERTH                     | 13 |
| GYM                                                | 14 |
| GYM                                                | 14 |
| GYM                                                | 14 |
| GYM                                                | 14 |
| UNICA WEIGHT MACHINE BY TECHNOGYM                  | 15 |
| GYM                                                | 15 |
| CYBEX ARC TRAINER                                  | 15 |
| GEL-GRIP DUMBBELLS BY HAMPTON FIT                  | 15 |
| GYM TOWEL STORAGE AND FRIDGE                       | 16 |

|                 |    |
|-----------------|----|
| CONTACTS        | 17 |
| Contact details | 17 |
| Telephones      | 17 |
| Office hours    | 17 |
| Address         | 17 |

# SPECIFICATIONS

## Overview

The Sanlorenzo SL96 harmoniously combines the elegant spaces with the latest technological features and style. This particular SL96 is known for its custom furnishings and tech upgrades throughout the interior and exterior. One of the most notable upgrades is the port-side salon terrace. The fold-down hull-side opening and sliding glass door to the salon operate on a hydro-electric system. A generous aft garage stows the tender, freeing up space on the flybridge, which is well equipped for grilling out and entertaining. Accommodations are provided for 8 guests in 4 cabins, including an on-deck master. On the lower deck are 2 VIP cabins, a guest cabin with twin/full convertible berths, and a bonus cabin outfitted as a gym. Sleeps 4 crew. The yacht is powered by twin MTU 16V2000 M84 2216Hp main engines.

## Basic Information

|                       |                        |
|-----------------------|------------------------|
| Category: Motor Yacht | Model Year: 2015       |
| Year Built: 2015      | Country: United States |
| Fly Bridge: Yes       | Cockpit: Yes           |

## Dimensions

|                          |                      |
|--------------------------|----------------------|
| LOA: 96' 0" (29.26m)     | Beam: 22' 1" (6.73m) |
| Max Draft: 6' 3" (1.91m) |                      |

## Speed, Capacities and Weight

|                                |                             |
|--------------------------------|-----------------------------|
| Cruise Speed: 25 Kts. (29 MPH) | Max Speed: 28 Kts. (32 MPH) |
| Water Capacity: 502 Gallons    | Holding Tank: 470 Gallons   |
| Fuel Capacity: 2800 Gallons    |                             |

---

## Accommodations

---

**Total Cabins:** 4

**Sleeps:** 9

**Crew Sleeps:** 4

---

## Hull and Deck Information

---

**Hull Material:** Fiberglass

**Hull Configuration:** Planing

**Hull Color:** White

**Hull Designer:** Sanlorenzo

**Exterior Designer:** Sanlorenzo

**Interior Designer:** Marty Lowe

---

## Engine Information

---

**Engines:** 2

**Manufacturer:** MTU

**Model:** 16V2000M84

**Fuel Type:** Diesel

---

# DETAILED INFORMATION

---

## OVERVIEW

---

The Sanlorenzo SL96 harmoniously combines the elegant spaces with the latest technological features and style. This particular SL96 is known for its custom furnishings and tech upgrades throughout the interior and exterior. One of the most notable upgrades is the port-side salon terrace. The fold-down hull-side opening and sliding glass door to the salon operate on a hydro-electric system. A generous aft garage stows the tender, freeing up space on the flybridge, which is well equipped for grilling out and entertaining. Accommodations are provided for 8 guests in 4 cabins, including an on-deck master. On the lower deck are 2 VIP cabins, a guest cabin with twin/full convertible berths, and a bonus cabin outfitted as a gym. Sleeps 4 crew. The yacht is powered by twin MTU 16V2000 M84 2216Hp main engines.

## ACCOMODATION

---

Sleeps 9 guests and 4 crew On-deck master suite with Tempurpedic mattress Two VIP staterooms and one guest stateroom on lower deck, each with ensuite head Two VIP berths hinge up for additional storage The guest stateroom has a convertible sliding berth system, allowing for a twin or full configuration Marble throughout all heads and guest lobby flooring Super Tuft carpeting in guest staterooms A fourth cabin on the lower deck is set up as a gym with Cybex ARC trainer machine, free weights, bench, two TVs, and Eco-soft rubber flooring

## SALON & GALLEY

---

Electric opening salon door Electro-hydraulic opening salon terrace/balcony Custom salon coffee table has a 27" Lenovo touchscreen computer integrated into the table top Salon end table top flips open to reveal a storage and charging station for laptop/mobile phones Wet bar with dedicated stemware and bottle storage in salon Dining table converts to a console table when not in use Wood flooring on main deck and master stateroom Bleached Oak bulkheads Electric draperies throughout main and lower decks (except crew area) Galley outfitted by Boffi Miele appliances Two Miele professional washers and dryers

## FLYBRIDGE & BOW AREAS

---

Bow area sofa with electric hi-low table and filler cushion Sail-cover style awning with removable stanchions for bow seating area Sail-cover style awning with removable stanchions on aft flybridge Flybridge island Boffi bar incorporated with Miele Teppan Yaki, ice maker fridge and sink Kenyon electric BBQ on flybridge Flybridge shower Treben Firenze Compo bridge leather helm seats Atlas flybridge electric davit system (owner used it for two Vespas), stowed in a custom teak sofa Portable, bracket mounted 40" TV for flybridge/cockpit Two electric hi-low

tables and filler cushions in cockpit Paola Lenti exterior loose furniture

---

## DECK & EXTERIOR

---

Teak decks throughout exterior Transom garage - holds up to a 13ft tender Brownies Third lung dive system in garage (compressor and accumulator tank in engine room) Extended, electro-hydraulic swim platform Carbon fiber Marquipt Sea Stairs Hydraulic swim ladder Eight enlarged hull-side windows Two Sea Smart retractable bow cleats Six underwater lights

---

## PROPULSION

---

Main Engines - Twin MTU 16V2000M84 @ 2,216 Hp/ea (500 hrs.) Additional engine control on port side

---

## ENGINE ROOM EQUIPMENT

---

Electric engine oil change pump CMC electric stabilizers Bow and stern thrusters Tropicalized air conditioning system - 240,000 BTU Watermaker - Sea Recovery 1400 US gallons/day Freshwater intake filtration system Ozone treatment on freshwater tank, A/C ventilation, and bilge areas Sludge tank converted into additional blackwater tank - 60 US gal Variable speed control fan system for engine room ventilation

---

## ELECTRICAL

---

Electrical system - 127/220V Generators - Two 55kW Kohler Shore power connections - Three 220V AC 100A, three-phase (two master + one slave) One connection in bow area. ASEA frequency convertor with seamless transfer CM8 aft Glendinning Cablemaster

---

## ELECTRONICS & COMMUNICATION

---

Raymarine Diamond navigation electronics package KVH TracVision HD7 SAT TV antenna KVH TracPhone V3 voice and data antenna DirecTV CCTV with 4 cameras and DVR FLIR night vision camera with thermal vision and low light Kenwood stereo in salon, galley and pilothouse Samsung LED TVs throughout

---

## Exclusions

---

Owner's personal belongings.



---

## Disclaimer

---

The Company offers the details of this vessel or yacht in good faith but cannot guarantee or warrant the accuracy of this information nor warrant the condition of the vessel. A buyer should instruct his representatives, agents, or his surveyors, to investigate such details as the buyer desires validated. This vessel or yacht is offered subject to prior sale, price change, or withdrawal without notice.

# PHOTOS

**PROFILE**



**SUNSET PROFILE**



**AFT PROFILE**



**TENDER GARAGE**



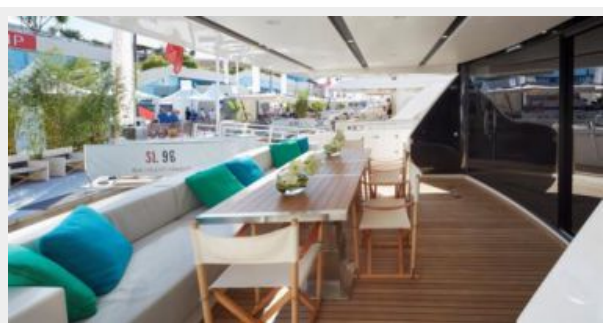
**FLYBRIDGE LOUNGE**



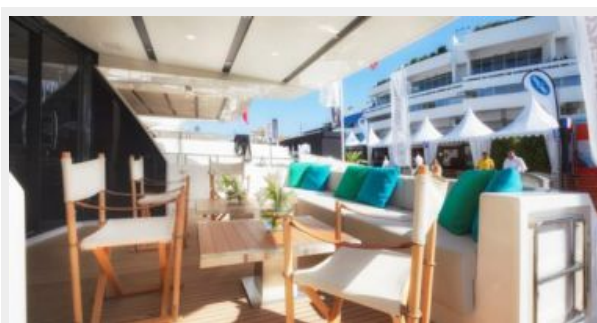
**FLYBRIDGE DINING**

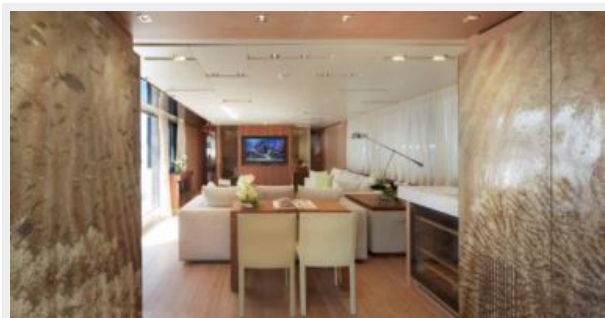


**AFT DECK**



**AFT DECK**



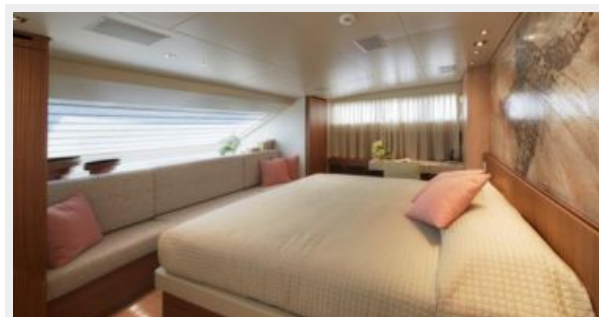
**SALON****SALON TERRACE****DINING TABLE COLLAPSED****DINING TABLE OPEN****COFFEE TABLE WITH INTEGRATED TOUCH SCREEN COMPUTER****SIDE TABLE CHARGING STATION CLOSED**



## SIDE TABLE WITH INTEGRATED CHARGING STATION



## MASTER STATEROOM



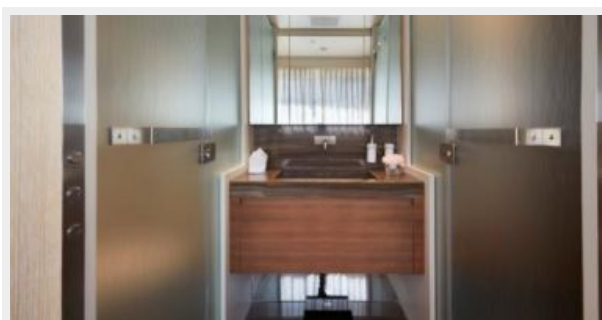
## MASTER STATEROOM



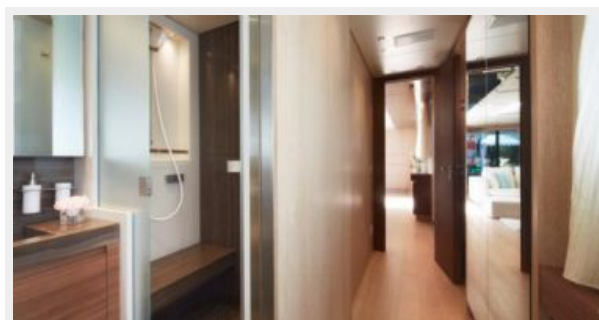
## MASTER STATEROOM



## MASTER VANITY



## MASTER FOYER



**GALLEY**



**LOWER DECK FOYER**



**VIP STATEROOM**



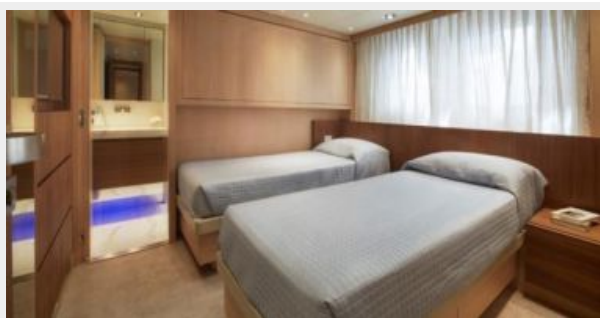
**GUEST STATEROOM**



**GUEST HEAD**



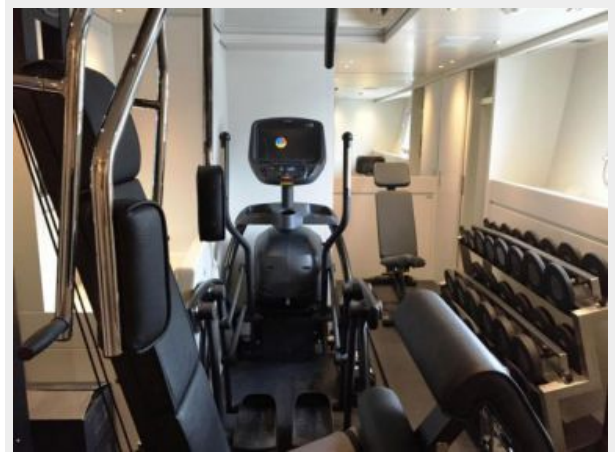
**CONVERTIBLE TWIN OR FULL BERTH**



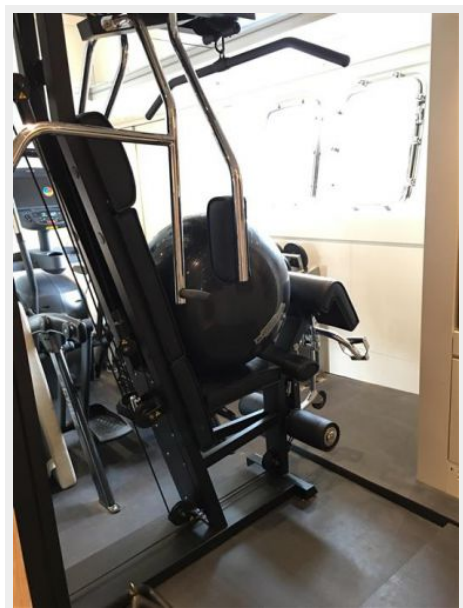
**GYM**



**GYM**



**GYM**



**GYM**





## GYM



## UNICA WEIGHT MACHINE BY TECHNOGYM



## CYBEX ARC TRAINER



## GEL-GRIP DUMBBELLS BY HAMPTON FIT



## GYM TOWEL STORAGE AND FRIDGE





# CONTACTS

---

Andrey Shestakov, leading yacht broker of the sales department of Shestakov Yacht Sales Inc. Shestakov Yacht Sales Inc., the official representative of the Miami/Fort Lauderdale FL headquarters.

## Contact details

---

Email: **andrey@shestakovyachtsales.com**

Web: [shestakovyachtsales.com/en/](http://shestakovyachtsales.com/en/)

## Telephones

---

USA: **+1(954)274-4435**

## Office hours

---

Monday – Saturday: **9:00 - 21:00 EDT**

Sunday: **closed**

## Address

---



Harbour Towne Marina, 850 NE 3rd St,  
STE 213, Dania, FL 33004