

## SL96 AMERICAS EDITION — SANLORENZO



**Судостроитель:** SANLORENZO

**Год постройки:** 2015

**Модель:** Моторная яхта

**Цена:** ЦЕНА ЯХТЫ ПО ЗАПРОСУ

**Местонахождение:** United States

**Длина общая:** 96' 0" (29.26m)

**Ширина:** 22' 1" (6.73m)

**Макс. осадка:** 6' 3" (1.91m)

**Крейс. скорость:** 25 Kts. (29 MPH)

**Макс. скорость:** 28 Kts. (32 MPH)

Купить **SL96 Americas Edition — SANLORENZO** а также выбрать подходящую вам яхту из нашего каталога яхт вам поможет опытный яхтенный брокер Андрей Шестаков. На сегодняшний день компания **Shestakov Yacht Sales Inc.** имеет большое количество яхт в собственном списке продаж, а также тесно сотрудничает со всеми крупными яхтенными производителями по всему миру.

Для того чтобы купить яхту **SL96 Americas Edition — SANLORENZO** а также проконсультироваться по любому вопросу связанному с покупкой, продажей, чартером яхт позвоните по телефону **+7(918)465-66-44**.

# ОГЛАВЛЕНИЕ

ОГЛАВЛЕНИЕ	2
ХАРАКТЕРИСТИКИ	5
Обзор	5
Основная информация	5
Размеры	5
Скорость, вместимость и масса	5
Размещение	6
Корпус и палуба	6
Информация о двигателе	6
ПОДРОБНОЕ ОПИСАНИЕ	7
OVERVIEW	7
ACCOMODATION	7
SALON & GALLEY	7
FLYBRIDGE & BOW AREAS	7
DECK & EXTERIOR	8
PROPULSION	8
ENGINE ROOM EQUIPMENT	8
ELECTRICAL	8
ELECTRONICS & COMMUNICATION	8
Исключения	8
Отказ от ответственности	9
ФОТОГРАФИИ	10
PROFILE	10
SUNSET PROFILE	10
AFT PROFILE	10
TENDER GARAGE	10
FLYBRIDGE LOUNGE	10
FLYBRIDGE DINING	10

AFT DECK	10
AFT DECK	10
SALON	11
SALON TERRACE	11
DINING TABLE COLLAPSED	11
DINING TABLE OPEN	11
COFFEE TABLE WITH INTEGRATED TOUCH SCREEN COMPUTER	11
SIDE TABLE CHARGING STATION CLOSED	11
SIDE TABLE WITH INTEGRATED CHARGING STATION	12
MASTER STATEROOM	12
MASTER STATEROOM	12
MASTER STATEROOM	12
MASTER VANITY	12
MASTER FOYER	12
LOWER DECK FOYER	13
GALLEY	13
VIP STATEROOM	13
GUEST STATEROOM	13
GUEST HEAD	13
CONVERTIBLE TWIN OR FULL BERTH	13
GYM	14
GYM	14
GYM	14
GYM	14
UNICA WEIGHT MACHINE BY TECHNOGYM	15
GYM	15
CYBEX ARC TRAINER	15
GEL-GRIP DUMBBELLS BY HAMPTON FIT	15
GYM TOWEL STORAGE AND FRIDGE	16

---

КОНТАКТЫ	17
-----	-----
Контактная информация	17
-----	-----
Телефоны	17
-----	-----
Время работы	17
-----	-----
Адрес	17
-----	-----

# ХАРАКТЕРИСТИКИ

## Обзор

The Sanlorenzo SL96 harmoniously combines the elegant spaces with the latest technological features and style. This particular SL96 is known for its custom furnishings and tech upgrades throughout the interior and exterior. One of the most notable upgrades is the port-side salon terrace. The fold-down hull-side opening and sliding glass door to the salon operate on a hydro-electric system. A generous aft garage stows the tender, freeing up space on the flybridge, which is well equipped for grilling out and entertaining. Accommodations are provided for 8 guests in 4 cabins, including an on-deck master. On the lower deck are 2 VIP cabins, a guest cabin with twin/full convertible berths, and a bonus cabin outfitted as a gym. Sleeps 4 crew. The yacht is powered by twin MTU 16V2000 M84 2216Hp main engines.

## Основная информация

Тип судна: Моторная яхта	Модельный год: 2015
Год постройки: 2015	Страна: United States
Открытая палуба мостика: Да	Кубрик: Да

## Размеры

Длина общая: 96' 0" (29.26m)	Ширина: 22' 1" (6.73m)
Макс. осадка: 6' 3" (1.91m)	

## Скорость, вместимость и масса

Крейс. скорость: 25 Kts. (29 MPH)	Макс. скорость: 28 Kts. (32 MPH)
Вместимость воды: 502 Gallons	Вместимость сточного бака: 470 Gallons
Объем топливного бака: 2800 Gallons	

## Размещение

---

Всего кают: 4

Спальные места: 9

Спальных мест экипажа: 4

## Корпус и палуба

---

Материал корпуса: Fiberglass

Комплектация корпуса: Planing

Цвет корпуса: White

Дизайнер корпуса: Sanlorenzo

Дизайнер экстерьера: Sanlorenzo

Дизайнер интерьера: Marty Lowe

## Информация о двигателе

---

Двигатели: 2

Производитель: MTU

Модель: 16V2000M84

Тип топлива: Diesel

# ПОДРОБНОЕ ОПИСАНИЕ

## OVERVIEW

The Sanlorenzo SL96 harmoniously combines the elegant spaces with the latest technological features and style. This particular SL96 is known for its custom furnishings and tech upgrades throughout the interior and exterior. One of the most notable upgrades is the port-side salon terrace. The fold-down hull-side opening and sliding glass door to the salon operate on a hydro-electric system. A generous aft garage stows the tender, freeing up space on the flybridge, which is well equipped for grilling out and entertaining. Accommodations are provided for 8 guests in 4 cabins, including an on-deck master. On the lower deck are 2 VIP cabins, a guest cabin with twin/full convertible berths, and a bonus cabin outfitted as a gym. Sleeps 4 crew. The yacht is powered by twin MTU 16V2000 M84 2216Hp main engines.

## ACCOMODATION

Sleeps 9 guests and 4 crew On-deck master suite with Tempurpedic mattress Two VIP staterooms and one guest stateroom on lower deck, each with ensuite head Two VIP berths hinge up for additional storage The guest stateroom has a convertible sliding berth system, allowing for a twin or full configuration Marble throughout all heads and guest lobby flooring Super Tuft carpeting in guest staterooms A fourth cabin on the lower deck is set up as a gym with Cybex ARC trainer machine, free weights, bench, two TVs, and Eco-soft rubber flooring

## SALON & GALLEY

Electric opening salon door Electro-hydraulic opening salon terrace/balcony Custom salon coffee table has a 27" Lenovo touchscreen computer integrated into the table top Salon end table top flips open to reveal a storage and charging station for laptop/mobile phones Wet bar with dedicated stemware and bottle storage in salon Dining table converts to a console table when not in use Wood flooring on main deck and master stateroom Bleached Oak bulkheads Electric draperies throughout main and lower decks (except crew area) Galley outfitted by Boffi Miele appliances Two Miele professional washers and dryers

## FLYBRIDGE & BOW AREAS

Bow area sofa with electric hi-low table and filler cushion Sail-cover style awning with removable stanchions for bow seating area Sail-cover style awning with removable stanchions on aft flybridge Flybridge island Boffi bar incorporated with Miele Teppan Yaki, ice maker fridge and sink Kenyon electric BBQ on flybridge Flybridge shower Treben Firenze Compo bridge leather helm seats Atlas flybridge electric davit system (owner used it for two Vespas), stowed in a custom teak sofa Portable, bracket mounted 40" TV for flybridge/cockpit Two electric hi-low

tables and filler cushions in cockpit Paola Lenti exterior loose furniture

---

## DECK & EXTERIOR

---

Teak decks throughout exterior Transom garage - holds up to a 13ft tender Brownies Third lung dive system in garage (compressor and accumulator tank in engine room) Extended, electro-hydraulic swim platform Carbon fiber Marquipt Sea Stairs Hydraulic swim ladder Eight enlarged hull-side windows Two Sea Smart retractable bow cleats Six underwater lights

---

## PROPULSION

---

Main Engines - Twin MTU 16V2000M84 @ 2,216 Hp/ea (500 hrs.) Additional engine control on port side

---

## ENGINE ROOM EQUIPMENT

---

Electric engine oil change pump CMC electric stabilizers Bow and stern thrusters Tropicalized air conditioning system - 240,000 BTU Watermaker - Sea Recovery 1400 US gallons/day Freshwater intake filtration system Ozone treatment on freshwater tank, A/C ventilation, and bilge areas Sludge tank converted into additional blackwater tank - 60 US gal Variable speed control fan system for engine room ventilation

---

## ELECTRICAL

---

Electrical system - 127/220V Generators - Two 55kW Kohler Shore power connections - Three 220V AC 100A, three-phase (two master + one slave) One connection in bow area. ASEA frequency convertor with seamless transfer CM8 aft Glendinning Cablemaster

---

## ELECTRONICS & COMMUNICATION

---

Raymarine Diamond navigation electronics package KVH TracVision HD7 SAT TV antenna KVH TracPhone V3 voice and data antenna DirecTV CCTV with 4 cameras and DVR FLIR night vision camera with thermal vision and low light Kenwood stereo in salon, galley and pilothouse Samsung LED TVs throughout

---

## Исключения

---

При продаже яхты исключаются личные вещи владельца.



---

## Отказ от ответственности

---

Компания предоставляет описание судна или яхты добросовестно, но не может гарантировать точность этой информации, а также не ручается за техническое состояние. Покупатель должен проинструктировать своих агентов или оценщиков исследовать представленную информацию более подробно, по собственному желанию. Продажа судна или яхты, изменение цены или снятие с продажи будет происходить без предварительного уведомления.

# ФОТОГРАФИИ

**PROFILE**



**SUNSET PROFILE**



**AFT PROFILE**



**TENDER GARAGE**



**FLYBRIDGE LOUNGE**



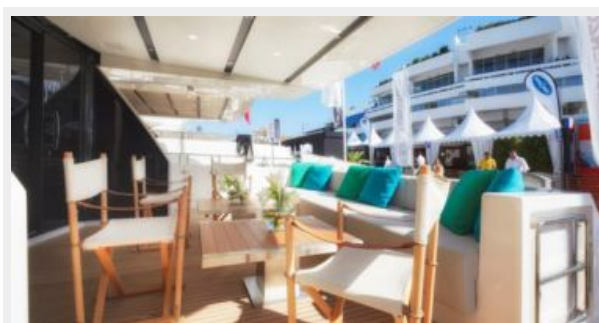
**FLYBRIDGE DINING**



**AFT DECK**



**AFT DECK**



**SALON**



**SALON TERRACE**



**DINING TABLE COLLAPSED**



**DINING TABLE OPEN**



**COFFEE TABLE WITH INTEGRATED TOUCH SCREEN COMPUTER**



**SIDE TABLE CHARGING STATION CLOSED**



### SIDE TABLE WITH INTEGRATED CHARGING STATION



### MASTER STATEROOM



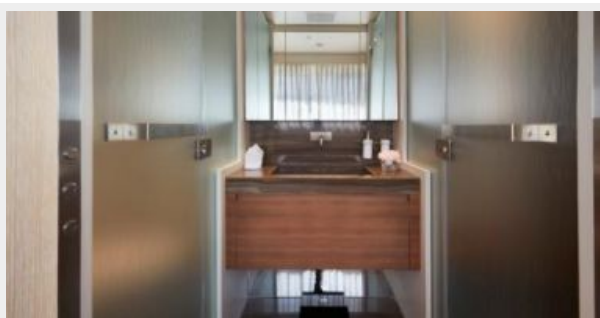
### MASTER STATEROOM



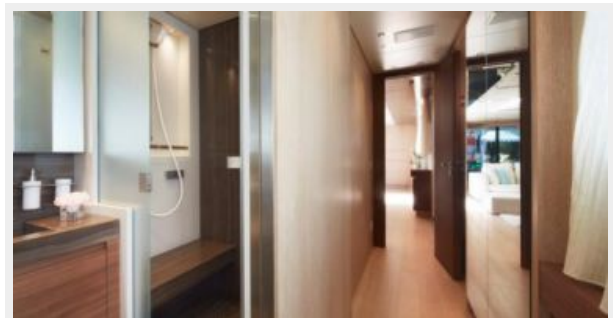
### MASTER STATEROOM



### MASTER VANITY



### MASTER FOYER



**GALLEY**



**LOWER DECK FOYER**



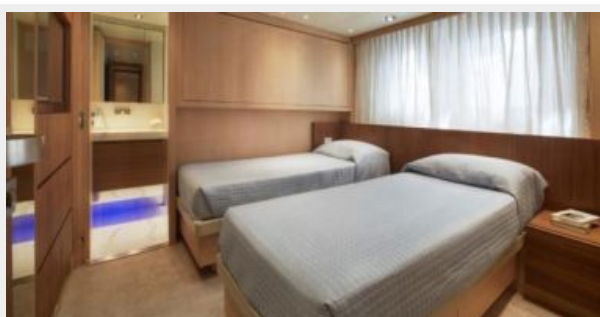
**VIP STATEROOM**



**GUEST STATEROOM**



**CONVERTIBLE TWIN OR FULL BERTH**



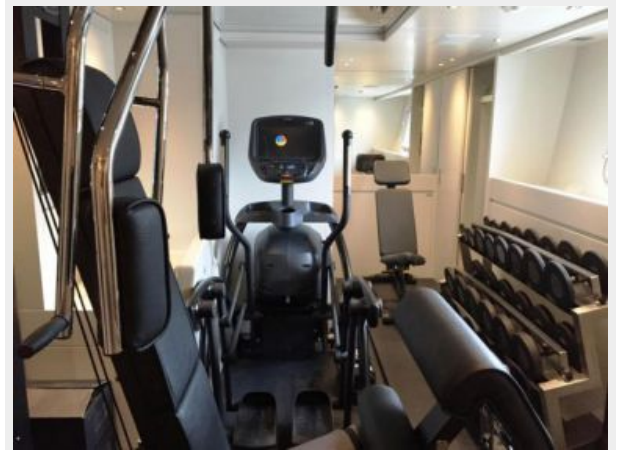
**GUEST HEAD**



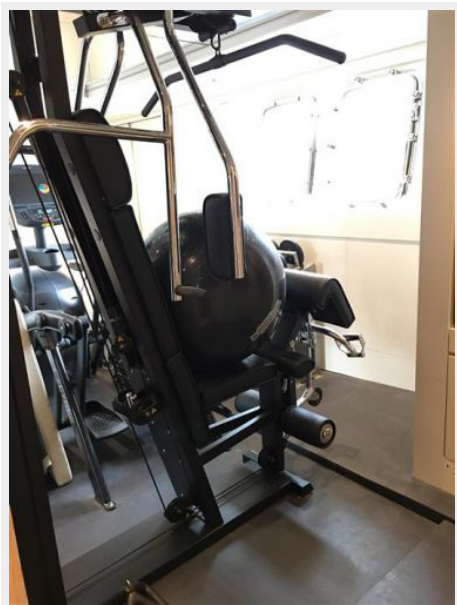
**GYM**



**GYM**



**GYM**



**GYM**



## GYM



## UNICA WEIGHT MACHINE BY TECHNOGYM



## CYBEX ARC TRAINER



## GEL-GRIP DUMBBELLS BY HAMPTON FIT



## GYM TOWEL STORAGE AND FRIDGE





# КОНТАКТЫ

---

Андрей Шестаков (Andrey Shestakov) – ведущий яхтенный брокер отдела продаж яхт и судов компании Shestakov Yacht Sales Inc. Официальный представитель Shestakov Yacht Sales Inc. для русскоговорящих клиентов в центральном офисе компании в Майами/Форт Лодердейл/Флорида/США.

## Контактная информация

---

Email: [andrey@shestakovyachtsales.com](mailto:andrey@shestakovyachtsales.com)

Web: [shestakovyachtsales.com](http://shestakovyachtsales.com)

## Телефоны

---

Краснодарский край: **+7(918)465-66-44**

США, Майами, Флорида: **+1(954)274-4435**

## Время работы

---

Понедельник – Суббота: **9:00 - 21:00**  
EDT

Воскресенье: **Закрито**

## Адрес

---



Harbour Towne Marina, 850 NE 3rd St,  
STE 213, Dania, FL 33004