

STEFFO — WESTPORT



Судостроитель: WESTPORT

Год постройки: 2008

Модель: Моторная яхта

Цена: ЦЕНА ЯХТЫ ПО ЗАПРОСУ

Местонахождение: United States

Длина общая: 130' 0" (39.62m)

Ширина: 26' 0" (7.92m)

Макс. осадка: 6' 6" (1.98m)

Крейс. скорость: 12 Kts. (14 MPH)

Макс. скорость: 24 Kts. (28 MPH)

Купить **STEFFO — WESTPORT** а также выбрать подходящую вам яхту из нашего каталога яхт вам поможет опытный яхтенный брокер Андрей Шестаков. На сегодняшний день компания **Shestakov Yacht Sales Inc.** имеет большое количество яхт в собственном списке продаж, а также тесно сотрудничает со всеми крупными яхтенными производителями по всему миру.

Для того чтобы купить яхту **STEFFO — WESTPORT** а также проконсультироваться по любому вопросу связанному с покупкой, продажей, чартером яхт позвоните по телефону **+7(918)465-66-44**.

ОГЛАВЛЕНИЕ

ОГЛАВЛЕНИЕ	2
ХАРАКТЕРИСТИКИ	4
Обзор	4
Основная информация	4
Размеры	4
Скорость, вместимость и масса	4
Размещение	5
Корпус и палуба	5
Информация о двигателе	5
ПОДРОБНОЕ ОПИСАНИЕ	6
Overview	6
Main Deck	6
Master Stateroom	7
Guest Accommodations	7
Captain & Crew Quarters	8
Skylounge	8
Pilothouse	8
Flybridge	9
Electrical	9
Foredeck	9
Boat Deck	9
Electronics	10
Исключения	10
Отказ от ответственности	10
ФОТОГРАФИИ	11
КОНТАКТЫ	15
Контактная информация	15
Телефоны	15

Время работы	15
Адрес	15

ХАРАКТЕРИСТИКИ

Обзор

"STEFFO" represents an extremely clean 2008 130' Westport that has benefited from a knowledgeable owner and a very attentive crew. Her interior features a spacious 5 stateroom layout with the sought after raised panel Mahogany woodwork with Burl inlays. Among her many features and upgrades: Hard top Teak decks Naiad at Rest Stabilizers NEW 2015 Bow and stern thrusters Hydraulic passerelle Alfa Laval - fuel treatment system Headhunter black water treatment plant system Kaleidescape video system HD TV's, Direct TV Sirius XM, Air Play and Internet in every room.

Основная информация

Тип судна: Моторная яхта	Модельный год: 2008
Год постройки: 2008	Год обновления: 2015
Вид обновления: Complete Interior	Страна: United States
Верх: Hardtop	Открытая палуба мостика: Да

Размеры

Длина общая: 130' 0" (39.62m)	Ширина: 26' 0" (7.92m)
Макс. осадка: 6' 6" (1.98m)	

Скорость, вместимость и масса

Крейс. скорость: 12 Kts. (14 MPH)	Дальность на крейсерской скорости: 2500
Макс. скорость: 24 Kts. (28 MPH)	Чистый вес: 298 Pounds
Вместимость воды: 1620 Gallons	Объем топливного бака: 9900 Gallons
Расход топлива: 130 Gallons	

Размещение

Всего кают: 5

Всего коек: 7

Спальные места: 10

Каюта капитана: Да

Каюты экипажа: 3

Спальных мест экипажа: 7

Корпус и палуба

Материал корпуса: Fiberglass

Материал палубы: Teak

Комплектация корпуса: Modified V-Hull

Цвет корпуса: White

Дизайнер корпуса: Westport

Дизайнер экстерьера: Westport/Taylor Olsen/Jack Sarin

Дизайнер интерьера: Robyn Rose

Информация о двигателе

Двигатели: 2

Производитель: MTU

Модель: 12V4000

Тип двигателя: Inboard

Тип топлива: Diesel

ПОДРОБНОЕ ОПИСАНИЕ

Overview

STEFFO has a soothing neutral interior with serene white and blue upholstery punctuated with touches of aqua and grey. Classic cabinetry is offset by modern touches and the latest technologies, keeping this yacht very much in the 21st century. Accommodations for 10 in 5 sumptuous staterooms all equipped with HDTV's, Direct TV, Sirius XM, Internet, Air play and Kaleidescape video system keep guests entertained and in touch.

Main Deck

Aft Deck The large aft deck offers a walk-behind bar with large TV to port.. Aft deck bar: 2 Subzero drawers and Hoshizaki ice maker, sink with hot/cold water and storage for barware. Built-in settee with cushions and ottoman, 42" HDTV Teak deck, Aft table custom seating for ten (10) people Spiral staircase leading up to boat deck and down to engineers control room (2) Southerland teak lounge chairs with ottoman Custom Teak wood bar with custom teak back stools Salon Going forward from the aft deck, through counter balanced stainless steel sliding doors, you enter the salon which includes luxurious sofas and occasional chairs and cocktail table. The salon is large, bright, airy and expansive that comes with very good seating and a large console in the starboard aft corner for the 55" HDTV. Some of the features include: Custom upholstered couch Wood cocktail table with glass top (3) Custom chairs End table with lamp Game table with (2) upholstered chairs 55" HDTV DVD player Surround sound Kaleidescape video system Direct TV Sirius XM Air Play Internet Majilite headliner Dining Custom Mahogany dining table with (10) dining chairs Custom recessed overhead light fixtures Built-in Mahogany buffet/storage cabinet's port and starboard Stereo with volume control Hunter Douglas blinds w/wireless remote The formal dining area forward of the salon and the stairway up to the pilothouse/sun lounge is forward in the starboard walk-thru and a second stairway down to the guest cabins is forward. There is a door to port for direct access between the galley and the dining area. The day head is forward and to starboard and offers a Royal Flush Hydro Vac toilet, stone vanity top and matching marble flooring. Hunter Douglas blinds and window treatments w/wireless remote Entryway and Day Head Double glass door entry Updated Granite entry in foyer Overhead mirror and art niche Day head with marble vanity and flooring Kohler Caxton sink Overhead mirror Headhunter Royal Flush toilet Galley The galley is located forward on the main deck. In the forward part of the galley there is a U Shaped seeing area with table. There is a door for direct access to the side deck. Forward is a stairway that leads down to the crew cabins. Custom Stew Pantry with Sink Kohler stainless steel sink Grohe faucet Side by side subzero fridge / freezer (2) New Gaggenau ovens New Viking cooktop (2) Thermador Warming Drawers New Hoshizaki Ice Maker Insinkerator garbage disposal New Bosch dishwasher Sharp stainless steel microwave Franke hot water dispenser Overhead vent 20" LDC TV Speakers Crestron WiFi two-way control

Master Stateroom

The full beam Master stateroom features a king size bed, built in dresser and seating area. A cedar lined closet provides ample storage space and the stunning Onyx bathroom has his and her heads with large separate shower. All rounded off with the warm mahogany cabinetry and crisp linens. King size berth Upholstered Leather Weaved headboard Built in dresser (2) Nightstand lamps Recessed lighting LED 55" High definition LCD TV Satellite receiver RTI Touch iPad Sirius XM Direct TV Kaleidescape Movie system Air Play Blue Tooth Surround sound speaker system with powered sub Crestron WiFi 2 way control UPS battery backup Cedarlined walk-in closet Hunter Douglas blinds w/wireless remote Chair with ottoman Digital safe in walk-in closet Full length mirror on wardrobe door, inside door Master Head White Onyx counters Lighted makeup mirror on vanity Headhunter Royal Flush Hydro Vac toilet Shower with Grohe fixtures (2) Kohler vintage sinks Mirrored medicine cabinets Recessed lighting LED Caramel Onyx floor and shower Volume control and speakers from main system

Guest Accommodations

The curved stairway leading from the dining area leads you to the guest stateroom foyer. Two mirror image VIP staterooms sit aft each with King size beds and ensuite bathrooms with frameless glass showers. Forward you will find two twin staterooms each offering 2 twin beds and ensuite bathrooms. All staterooms are perfectly fitted with the finest linens and accented with the warm mahogany cabinetry.

VIP Stateroom Starboard This VIP cabin can be accessed down a curved stairway from the formal dining area to the lower foyer. King berth Upholstered headboard Nightstands with two drawer storage Cedar lined wardrobe with full length mirror on door Roman shades Lamps on nightstands Port lights opening with screen Sirius XM Direct TV Kaleidescape Air Play Blue Tooth VIP Head Starboard Headhunter Royal Flush Hydro Vac toilet Frameless tempered glass shower with Grohe fixtures Stone counters Kohler vintage sinks Mirror above vanity Recessed lighting LED Vanity with lighting Port lights with blinds Guest Stateroom Port Twin berths Upholstered headboards Recessed lighting LED Mirrors on bulkhead above headboard 26" High definition LCD TV Sat receiver Speakers Sirius XM Direct TV Kaleidescape Air Play Blue Tooth UPS battery backup Cedar lined wardrobe Full length mirror on wardrobe door Fixed Roman shades Port lights opening with screen and privacy cover Guest Head Port Headhunter Royal Flush Hydro Vac toilet Frameless shower with tempered glass doors Kohler vintage sinks Marble counter Vanity with lighting Grohe fixtures Mirror above the vanity Recessed lighting LED Guest Stateroom Starboard Twin berths Recessed lighting LED Mirrors on bulkhead above headboard Cedar lined wardrobe Full length mirror on wardrobe door Fixed Roman shades Port lights opening with screen and privacy cover Sirius XM Direct TV Kaleidescape Air Play Blue Tooth Guest Head Starboard Headhunter Royal Flush Hydro Vac toilet Shower with tempered glass doors Marble countertop Vanity with lighting Grohe fixtures Mirror above vanity Recessed lighting LED

Captain & Crew Quarters

Crew Quarters This area is accessed from the galley down a stairway to the crews lounge area. There are two cabins forward to port and starboard and an emergency exit from the starboard crew cabin to the chain locker. Captains Stateroom Custom full size berth with drawers underneath Dresser Desk with stool Bookcase Cedar lined wardrobe with dressing mirror inside door Duette blinds 20" LCED TV (DVD combo) Satellite receiver Speakers Recessed lighting LED Captains Head Headhunter Royal Flush Hydro Vac toilet Shower with Grohe fixtures Kohler sink Medicine cabinet with mirror Recessed lighting LED Solid surface counter Crew Quarters & Head Port (2) Custom twin berths Dresser 15" LCD TV (DVD combo) Satellite receiver Handheld remote Recessed lighting LED Cedar lined wardrobe with mirror inside door Duette blinds Starboard (2) Custom twin berths Dresser 15" LCD TV (DVD combo) Satellite receiver Handheld remote Recessed lighting LED Cedar lined wardrobe with mirror inside door Duette blinds Head Port & Starboard Headhunter Royal Flush Hydro Vac toilet Shower with Grohe fixtures Kohler sink Medicine cabinet with mirror Recessed lighting Solid surface counter Crew Lounge 23" LDC TV 15" Monitor for CCTV Satellite receiver DVD / CD player Speakers Table with built in seating Upholstered settee Sub Zero refrigerator / freezer (NEW) Sharp stainless steel microwave Stainless sink Cabinets and solid surface tops LG Stacked Washer and Dryer (NEW) Storage/Utility/Engineers Quarters Located aft of engine room 32" LCD TV (DVD combo) Satellite receiver Speakers Handheld remote to control Crestron system Double-side refrigerator / freezer Custom size berth Dresser Wardrobe Head includes vanity, toilet and shower

Skylounge

The airy skylounge offers a comfortable space to sit back and relax. Whether reading a book, playing a game, watching a movie or simply watching the waves lap by. There is a bar area topped with white onyx and custom wine coolers to chill your favorite vintage. Sofa Cocktail table End table (3) Chairs Ottoman Bar with white Onyx top Sub Zero refrigerator Hoshizaki ice maker (2) Custom Sub Zero Dual Zone wine cooler Game table with chairs Built in credenza Entertainment center with 55" Samsung LED HDTV DVD / CD player Satellite receiver Sirius XM Direct TV Kaleidescape Air Play Blue Tooth Surround sound receiver Surround sound speaker system with 2 powered subs RTI iPad Remote UPS battery backup

Pilothouse

The pilothouse is accessed up the stairway forward of the formal dining area, from either bridge wing or from the sun lounge which is aft of this area. The helm is forward on the centerline with all engine controls, gauges and electronics easy to hand. Aft is a curved seating area with table. Outboard to port is the desk. 24" Wooden wheel MTU integrated control head DDC/MTU engine instrumentation Majilite bulkheads Majilite headliner Leather covered control console (2) Stidd helm chairs (2) Wing stations 6" Weems and Plath clock/barometer Built in chart drawer Crestron touch panel (2) Chart light Riche Globe Masters compass Speakers New Carpeting Leather settee Mahogany settee table with high gloss and stainless steel grab rail Windshield (mesh sun

screen cover) Desk (laptop storage, stool and bookcase above) Black laminate counters

Flybridge

The fly bridge is a spacious area, perfect for entertaining. The helm is forward on the centerline. Featuring a large bar console with 3 teak bar stools centered under the mast. Refrigerator, icemaker and BBQ grill are located here and a large padded sun lounging area sits aft. This area is also well protected by the hardtop. Anchor light Deck lighting Kahlenberg air horn Molded settee with cushions and covers (2) Custom Teak Wood Tables (New) Custom Wood Teak Bar (3) Custom Wood Teak Swivel Bar Stools Sun pad with cushions and covers Wet bar with solid surface top Sink with hot / cold water TV / Phone jacks Hoshazaki icemaker NEW GE refrigerator NEW Alfresco Gas BBQ BBQ stainless steel cover (2) Pairs of speakers RTI iPad Remote

Electrical

InteliSea Model IS1 Vessel Information and Control VIC System (Upgraded) NAIAD AT REST Stabilizers NEW 2015 Batteries (all AGM type) Defrosters Chart lights Ritchie compass Carlisle Finch Searchlight (13) Bilge switched monitored (19) Heat sensors (18) Smoke alarms Security system Control of A/C supply switching from all available sources Tank levels monitored Fly bridge grill lid closed alarm Battery chargers" (1) Newmar 95amp for the ships system: (1) Newmar 70amp 12V DC ships system (1) Newmar 40 amp for the main engine starting battery banks (1) Newmar 40amp/12V DC battery charger for the generator starting battery bank (2) 100 amp single phase/three phase shore inlets with Glendinning Cablemaster cord reels at starboard bustle Shore power converters "ASEA" Exterior lighting LED RTI iPad Remote Port Gen 11392 hrs. Strb Gen 10814 Hrs. Complete Overhaul in 2014 both Gens

Foredeck

Accessible via sides or steps down from Portuguese bridge Circular seating with cushions Bow sun lounge with cushions, covers and enclosed storage locker underneath Stereo volume control and speakers from salon AMX Teak decks Ship's bell Bow Dual Poole style 270 kg polished stainless steel 400' 5/8 chain for one anchor, 300' for the other 5/8 chrome chain stoppers (2) VWC 6000# Maxwell, hydraulic winches anchor chain wash down system Stern (2) Maxwell VC 3500# 24V DC Capstan

Boat Deck

This area is accessed from either the aft deck or from the sun lounge and has good storage for the dinghy, a table and chairs. 11 Kw Hot tub with heater Built in settee with cushions cover and storage space below Custom Teak HiLo Cocktail Table Chocks for tender Nautical structures davit Speakers RTI iPad Remote Air Play Flagstaff (4) Custom Lounge Chairs Teak decks Toys

AB 14' Tender with lifting bridle (2) Sea Doos GTX 215 Limited (2) F5 Sea Bobs Custom Inflatable Slide Drone

Electronics

B & G Digital depth sounder AIS Furuno FA 150 Simrad Autopilot system AP50 (3) Elbex hi resolution color/pan/tilt/zoom camera system Tellular GSM cellular phone Furuno FCV1200 color video depth sounder B & G Gydra system digital instruments Nobeltec Odyssey charter system (2) Furuno Felcom Inmarsat C Inmarsat internet connection Loud hailer Ritchie F600 magnetic ship's compass Furuno Navtex NX700 (2) Furuno radar KVH Fleet Satcom Sea Tel Satellite TV antenna X M Satellite weather ICOM VHF Radio M602 VSAT System Upgraded WiFi, Cellular throughout the vessel

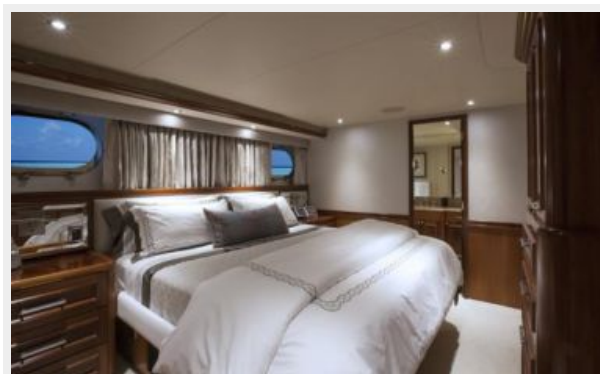
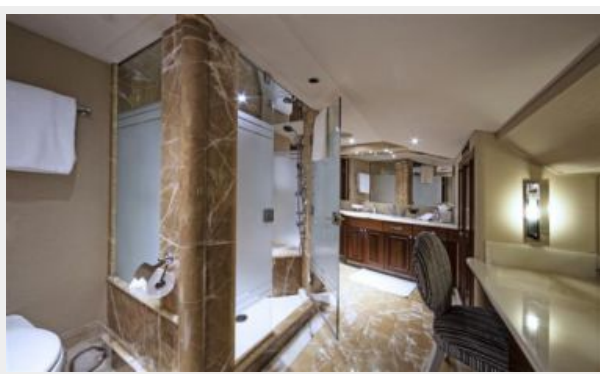
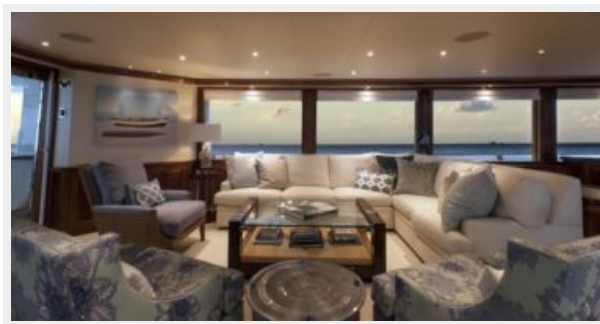
Исключения

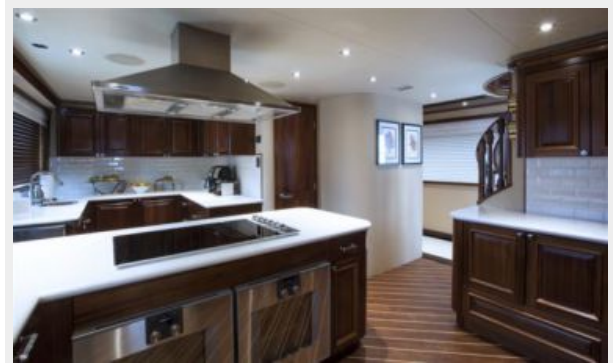
При продаже яхты исключаются личные вещи владельца.

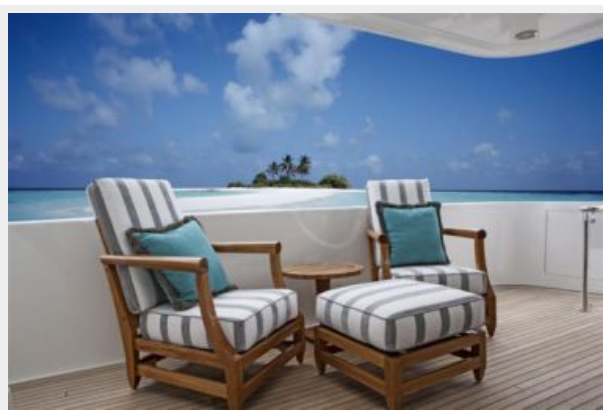
Отказ от ответственности

Компания предоставляет описание судна или яхты добросовестно, но не может гарантировать точность этой информации, а также не ручается за техническое состояние. Покупатель должен проинструктировать своих агентов или оценщиков исследовать представленную информацию более подробно, по собственному желанию. Продажа судна или яхты, изменение цены или снятие с продажи будет происходить без предварительного уведомления.

ФОТОГРАФИИ









КОНТАКТЫ

Андрей Шестаков (Andrey Shestakov) – ведущий яхтенный брокер отдела продаж яхт и судов компании Shestakov Yacht Sales Inc. Официальный представитель Shestakov Yacht Sales Inc. для русскоговорящих клиентов в центральном офисе компании в Майами/Форт Лодердейл/Флорида/США.

Контактная информация

Email: andrey@shestakovyachtsales.com

Web: shestakovyachtsales.com

Телефоны

Краснодарский край: **+7(918)465-66-44**

США, Майами, Флорида: **+1(954)274-4435**

Время работы

Понедельник – Суббота: **9:00 - 21:00**
EDT

Воскресенье: **Закрито**

Адрес



Harbour Towne Marina, 850 NE 3rd St,
STE 213, Dania, FL 33004