

CALLISTO J — SEAWAY



Судостроитель: SEAWAY

Год постройки: 2007

Модель: Моторная яхта

Цена: **ЦЕНА ЯХТЫ ПО ЗАПРОСУ**

Местонахождение: Croatia

Длина общая: 53' 6" (16.31m)

Ширина: 15' 9" (4.80m)

Мин. осадка: 4' 5" (1.35m)

Купить **CALLISTO J — SEAWAY** а также выбрать подходящую вам яхту из нашего каталога яхт вам поможет опытный яхтенный брокер Андрей Шестаков. На сегодняшний день компания **Shestakov Yacht Sales Inc.** имеет большое количество яхт в собственном списке продаж, а также тесно сотрудничает со всеми крупными яхтенными производителями по всему миру.

Для того чтобы купить яхту **CALLISTO J — SEAWAY** а также проконсультироваться по любому вопросу связанному с покупкой, продажей, чартером яхт позвоните по телефону **+7(918)465-66-44**.

ОГЛАВЛЕНИЕ

ОГЛАВЛЕНИЕ	2
ХАРАКТЕРИСТИКИ	4
Основная информация	4
Размеры	4
Скорость, вместимость и масса	4
Размещение	4
Корпус и палуба	4
Информация о двигателе	5
ПОДРОБНОЕ ОПИСАНИЕ	6
Broker's Comments	6
Owner's Comments	6
Press Comments	7
Construction	7
Machinery	8
Electrical Systems	9
Plumbing Systems	10
Tankage	11
Navigation Equipment	11
Domestic Equipment	12
Accommodation	14
Forward Deck	15
Flybridge	15
Aft Cockpit	16
Deck Equipment	16
Исключения	17
Отказ от ответственности	17
ФОТОГРАФИИ	18
КОНТАКТЫ	29

Контактная информация	29
Телефоны	29
Время работы	29
Адрес	29

ХАРАКТЕРИСТИКИ

Основная информация

Тип судна: Моторная яхта

Подкатегория: Semi-Displacement

Модельный год: 2007

Год постройки: 2007

Страна: Croatia

Размеры

Длина общая: 53' 6" (16.31m)

Ширина: 15' 9" (4.80m)

Мин. осадка: 4' 5" (1.35m)

Скорость, вместимость и масса

Водоизмещение: 52910.94288 Pounds

Вместимость воды: 161.14495172
Gallons

Объем топливного бака: 877.05121264
Gallons

Размещение

Всего кают: 3

Всего коек: 6

Всего ком. состава: 2

Корпус и палуба

Материал корпуса: GRP

Материал палубы: Teak

Комплектация корпуса: Semi-
Displacement

Дизайнер корпуса: J & J Design

Информация о двигателе

Двигатели: 2

Производитель: Yanmar

Модель: 6LY3A

Тип двигателя: Inboard

Тип топлива: Diesel

ПОДРОБНОЕ ОПИСАНИЕ

Broker's Comments

This is a highly-accomplished cruising motor-yacht. Seaway are not a "tip of the tongue" name. They quietly design and engineer very high-end carbon yachts under the Shipman brand, and also the Greenline motor-cruiser range. The Skagen 50 is a beautifully-conceived and executed Category A cruiser. She is remarkably quiet under way, with a huge amount of storage volume, both in her cabins and also in the full-beam aft lazarette. She is equipped with a full cruising inventory to include Williams 325, washer/drier, water-maker, freezer and upgrade 12kVa generator. For close quarter manoeuvring she has the wireless Yacht Controller remote for engines and her upgraded bow and stern thrusters. With two side access doors, bulwark gates, aft docking winches and internal flybridge stairs, she is a joy to handle around the marina, and is easily managed with a crew of two.

Currently lying only a short and very easy flight away near Zadar, Croatia – she is docked in a stunning, central and well-organised cruising area on the Dalmatian coast. There is a full set of details photographs available, along with a video presentation, and we also have print copies of the Motor Boat & Yachting report on file for your interest. (please note that the MBY test report was done on this actual boat and, based on that test, the Skagen 50 was voted "Trawler Yacht of the Year" for 2007 in the awards at the London Boat Show in January 2008.

Owner's Comments

What can I say? This is the perfect boat for short or extended cruising either as a couple or with friends and family. She is spacious enough to let six people live aboard in comfort without feeling they are on top of one another, and with the free flow of side doors and internal steps to the flybridge, she is easy and fast to get around.

We have spent an average of over three months a year living on board in complete comfort. We have generally pottered at about 8.5 knots, 1,600 rpm, and burning only 2 litres per mile travelled. At this speed everyone on board can go about their day safely and comfortably, without spilling any drinks and knowing that young children or animals (although we have never had animals on board) are safely enclosed by the high gunwales and safety rails. Having said that, for added security the young ones have always worn the MOB wrist tags that would alert the boat if they were more than about 30 feet from the central sensor, in other words if they were not on board.

We generally use the spacious flybridge for most on board meals but the very usable foredeck has traditionally been our sundowners spot, using a table and a couple of director's chairs to supplement the standard seating. This provides excellent privacy when in a marina berthed stern to - everyone else is located at their stern, whilst we are secluded at our bow.

Adriatic cruising is just superb, with hundreds of islands always providing sheltered, calm, clear, warm water when the wind does occasionally kick up a bit but even when caught out in a major storm, Callisto J handles anything that can be thrown at her. We have always felt completely safe, secure and comfortable, no matter the conditions. Besides, she has a useful turn of speed to outrun the weather.

Close quarter manoeuvring is simplicity itself, she sits in the water and with her skeg keel just waits to be told what to do and the hand held Yacht Controller system makes that a doddle. Once you have used it, you would never be without it. I can walk around, looking closely at the "tight corners" and frequently draw approving comments from the inevitable watchers in marinas and harbours. It is so easy that the two of us often berth alone when there is no shore based assistance.

Callisto J often draws admirers from motor boaters and yachties alike, she is a proper "little ship". We love her and only family circumstances are dragging us off to spend time on other continents, a long way away from Callisto J.

Press Comments

"With its fine engineering, build quality, deep keel, good mooring gear and its free-flowing interior and deck layout, Seaway's new Skagen 50 excels as a tri-cabin, twin heads, long-distance cruising boat. It is a serious offshore cruiser and weekend party boat – as an all-rounder, it's very impressive." – David Marsh, Motor Boat & Yachting – August 07

Construction

RCD Status: The yacht conforms with the essential safety requirements of Directive 94/25EC (Recreational Craft Directive) and is categorised A – "Ocean" for 12 persons on board

Hull Construction:

- GRP laminate construction with closed cell foam stiffening.
- Full length stringers.
- Full length keel.
- Hull painted in Awlcraft 2000 – allowing polishing if desired.
- Coppercoat hull protection in lieu of conventional antifouling paint.
- 2 x Ultrasonic “Oceonic” transducers – fitted inside hull under forward accommodation and at lazarette.

Deck and Superstructure Construction:

- Teak-laid deck to bathing platform, side decks, foredeck and flybridge areas.
- GRP superstructure with covered side decks and overhanging aft cockpit.
- Moulded GRP radar arch to flybridge.

Machinery

Engines & Gearboxes:

- 2 x Yanmar 6LY3A 6-cylinder 5.8L turbo-charged diesel engines rated at 480hp each.
- AquaDrive thrust couplings & engine mountings to main engines for vibration dispersal to hull and transmission noise reduction.
- KMH61A reduction Yanmar gearboxes on 2.43 ratio.
- Twin Racor fuel filters with bypass and water alarms.

Maintenance & Performance:

- Engine Hours: c. 1200 as of 20-10-2015.
- Full service history – owner since new.
- Fuel figures from sea trial:

85lph burn on each engine at 20 knots

60lph burn on each engine at 16 knots

46lph burn on each engine at 14 knots

Her owner normally cruises at 1600 RPM = 8lph burn on each engine at 8/8.5 knots

Propulsion & Steering:

- Yanmar single lever electronic throttle/gear controls to flybridge and lower consoles.
- YachtController wireless remote engine and thruster controls.
- Sleipner SidePower 9.6HP bowthruster (6-bladed props for more efficient, quieter operation).
- Sleipner SidePower 9.6HP sternthruster (6-bladed props for more efficient, quieter operation).
- Rudders in Nickel Bronze Aluminium alloy.
- 4-bladed in Nickel Bronze Aluminium alloy.
- 50 mm propellor shafts in hi-tensile stainless steel.
- Bennett electro-hydraulic trim tabs and indicators to both helm stations.

Electrical Systems

Voltage Systems:

- 24V system.
- 220V system with outlets.

Battery Banks:

- 2 x 12V batteries of 500 Ah for services.
- Group of 12V batteries of 140 Ah for engine cranking.
- 1 x 12V battery of 120 Ah for generator starting.
- Group of 12V batteries of 120 Ah for bowthruster and anchor windlass.

Battery Chargers:

- Mastervolt Mass 24/100 60Ah automatic battery charger.

Alternators:

- Alternators on port and starboard engines.
- Mastervolt 24V 150Ah alternator to starboard engine.

Generator:

- Mastervolt Whisper 12 kVa generator set in lieu of 3.5 kVa standard fit unit.
- 1555 hours run at 22.10.2015.

Shore Power:

- 230v, 50Hz, 32A shorepower inlet in aft cockpit.

Other Electrical:

- Mastervolt 24/1500 1500W sine wave inverter.

Plumbing Systems

Fresh Water & Water Heating System:

- Pressurized hot and cold water system.
- Water heating via immersion element and engine heat exchange calorifier.
- Additional Nature Pure drinking water filters to galley and icemaker.

Watermaker:

- Spectra 60 l/h desalinator with remote operating panel at galley.

Bilge Pumps:

- Four electric 24 V pumps in engine room, lazarette, bow and stern and 2 manual emergency pumps.

Tankage

Fuel:

- Total standard capacity of 2,160 litres in 2 x stainless steel tanks (located outboard of each engine).
- Extra 1,160 litres stainless steel tank specified from new (located at forward centreline of engine bay).
- Fuel management system with Duplex Racors.
- Sightglass fitted to tanks & tanks insulated.

Fresh water:

- Total capacity of 610 litres.

Grey/Blackwater Holding Tanks:

- 180 litres; can be emptied outboard or by suction on deck.

Navigation Equipment

Pilot House:

- Raymarine E-120 multifunction display (can be linked to aft-facing camera).
- Raymarine 4Kw closed radome radar.
- Raymarine ST6002 Smartpilot.
- Raymarine ST60+ Tridata.
- Raymarine ST60+ Wind.
- Raymarine Smart Pilot hand-held pilot Controller.
- Raymarine Lifetag MOB system.

- Ray 240E DSC VHF.

Flybridge:

- Raymarine ST6002 Smartpilot.
- Raymarine E-80 multifunction display (can be linked to aft-facing camera).
- Raymarine ST60+ Tridata.
- Raymarine ST60+ Wind.
- Raymarine ST60+ Compass.
- Remote control searchlight.
- Ray 240E DSC VHF.

Domestic Equipment

General:

- Bosch WVT 1260 washing machine / tumble dryer (located in aft lazarette).

Galley:

- U-shaped galley to port with storage cabinets, lockers and ivory-coloured worktops.
- Additional cabinet above cooker with three down-lights.
- Twin stainless steel sinks.
- Bosch dishwasher in lieu of small fridge.
- Pyroceram electric hob with 3 burners – please note no gas carried on board.
- Combined microwave/conventional oven.
- 24V 220 litre front loading refrigerator.
- Top-loading freezer built into worktop.
- Parquet flooring to galley sole.

Heads/Showers:

- 2 heads compartments – both with separate showers.
- Electric Tecma flushing heads.
- Hot and cold shower fitting to inner transom of aft cockpit.

Heating & Ventilation:

- Reverse cycle air conditioning throughout.
- 1 x HFL 24000BTU unit (located underneath pilothouse bench) and 2 x HFL 10000BTU units (one beneath forward double berth and one beneath companionway steps between guest cabins).

Entertainment:

- Flybridge:
 1. Waterproof 2-way Marine speakers on flybridge (linked to Bose entertainment – so can be zoned to play either same, or different music, as desired).
- Saloon:
 1. Bose Lifestyle entertainment system.
 2. 20" Sharp analogue TV on rise/fall mechanism.
 3. DVD player.
 4. TV antenna.

Lighting:

- 24V lighting throughout.
- Dimmer circuits to pilothouse white lighting, saloon overhead lighting, flybridge arch down-lights, aft cockpit and forward master cabin.
- Red night lights to pilothouse.
- Reading lights to all cabins.

- Diffused/valance lighting to all cabins

Accommodation

Summary of Accommodation:

- 6 berths in 3 staterooms – mesh ventilation cushions under mattresses throughout.
- Very high-quality interior joinery in satin teak with cream carpets throughout.

Description of layout from forwards:

- Master cabin forward with:
 1. Centreline double berth.
 2. Hanging locker & storage drawers beneath berth.
 3. Mirrored headboard.
 4. En-suite shower/heads to starboard – with optional heated towel rail.
 5. Concealed safe located between guest cabins beneath companionway stairs.
 6. Large storage bin underneath cabin sole between foot of bed and cabin door.
- Port cabin with:
 1. Twin berths.
 2. Mirrored headboard.
 3. Hanging locker (cedar-lined).
 4. Extensive under floor storage and also under bed storage.
- Guest/day heads to port – with separate shower stall and optional heated towel rail.
- Starboard cabin with:
 1. Twin berths.
 2. Headboards.
 3. Hanging locker.
 4. Extensive under floor storage and also under bed storage.

- Saloon with:
 1. Large L-shaped sofa on port trimmed in cream synthetic leather.
 2. Electric panel on port aft bulkhead.
 3. Bose surround sound entertainment system (can also play to flybridge speakers also if desired).
 4. 2 movable synthetic leather-trimmed armchairs with storage.
 5. Electrically-adjustable table with fold in-out leaves.
 6. Storage cabinets, lockers and extra optional bookshelf to starboard.
 7. Additional saloon lighting (5 lights).
 8. Roller blinds to side windows, curtains to aft doors, privacy curtain and blind to isolate pilothouse.
- Pilot house with:
 1. Fully electrically-adjustable Besenzoni pilot seat in cream synthetic leather.
 2. Metalstyle wood-rimmed steering wheel.
 3. Black synthetic leather anti-glare dashboard trim.
 4. Sony CD player with 2 loudspeakers.
 5. Demisters to forward screens.
 6. Pantographing side doors to starboard and port.
 7. Three-seat synthetic leather sofa for passengers, with navigators bench and chart table/drawer to port.
 8. Massive teak parquet floor.
 9. Stairs to flybridge.

Forward Deck

- Upholstered seating (re-trimmed in 2013).
- Deck lockers forward; either side of anchor platform.
- Forward freshwater deckwash in starboard locker.

Flybridge

- Large upholstered driving bench/sofa with adjustable steering wheel.
- Lockers.

- Solid teak table with U-shaped sofa for up to 8 persons.
- Wet-bar unit with built-in sink, grill, icemaker, lockers and waste bin.
- Radar arch in GRP supporting navigation lights and antennas.
- Navigation lights.
- Forward venturi wind-shield.

Aft Cockpit

- 2 Lofrans electric winches aft for handling of aft mooring lines, with foot controls.
- Lockers to port of the saloon door.
- Access to a deep cockpit locker.
- Dimmable lights in cockpit ceiling.
- Red low-level courtesy lights on swimming platform, steps and side deck steps.
- Shower with hot and cold water.
- Stainless steel removable bathing ladder.
- Extra cassette-style retracting bathing ladder fitted to side of bathing platform.
- Electro-hydraulic 450kg lift passarelle with 2.7m reach – can easily launch/recover Williams 325 Jet RIB.

Deck Equipment

Anchoring & Mooring Equipment:

- 2000W 24V anchor windlass, with brake and stainless steel protection.
- Bow windlass control.
- Stainless steel Delta anchor 40kg with 60m of 12mm chain, anchor chain and fender/rope storage with drain.
- 3 electric window washers.

Covers, Canvas & Cushions:

- Canvas covers for flybridge furniture and tender.
- Complete flybridge canvas cover (bimini top with removable side screens (un-used)).
- Aft cockpit canvas enclosure.
- Mesh sun screens for shading aft cockpit.
- Black mesh windscreen covers.
- Sun-pad cushions for aft flybridge area and foredeck (cover for foredeck area cushions).

Tender & Outboard:

- Williams 325 Jet RIB tender with adjustable lifting apparatus.

Safety Equipment:

- 6-person liferaft in cradle at flybridge (serviced and agent certified in 2012).
- McMurdo EPIRB with GPS.
- Jon Buoy Jon 1000 MOB recovery system.
- 2 x MOB throwing lines.

Fire-fighting equipment:

- Fire fighting system; 3 fire extinguishers in the accommodation, 2 special T-sensing automatic fire extinguishers (Firekill - 6kg each) in the engine room

Исключения

При продаже яхты исключаются личные вещи владельца.

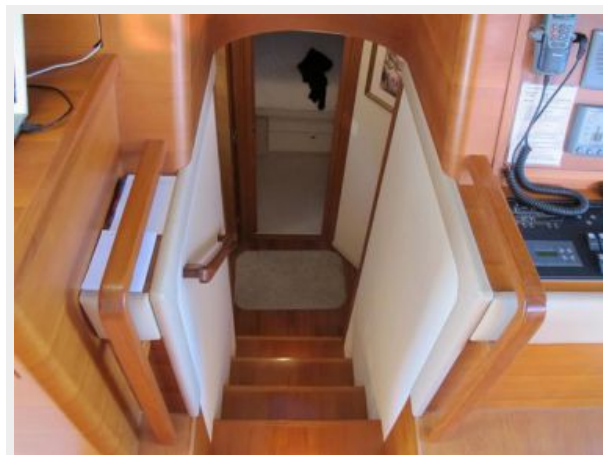
Отказ от ответственности

Компания предоставляет описание судна или яхты добросовестно, но не может гарантировать точность этой информации, а также не ручается за техническое состояние. Покупатель должен проинструктировать своих агентов или оценщиков исследовать представленную информацию более подробно, по собственному желанию. Продажа судна или яхты, изменение цены или снятие с продажи будет происходить без предварительного уведомления.

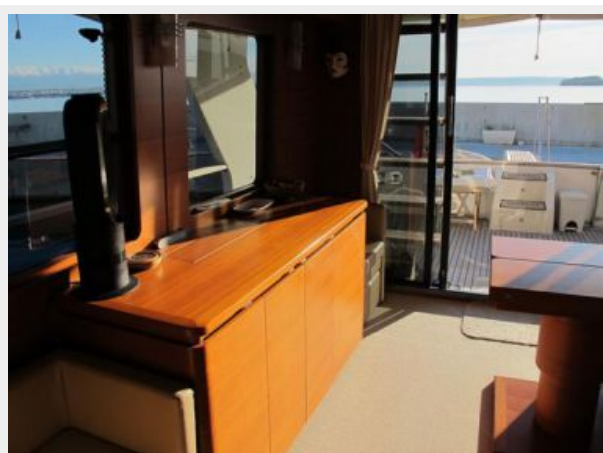
ФОТОГРАФИИ

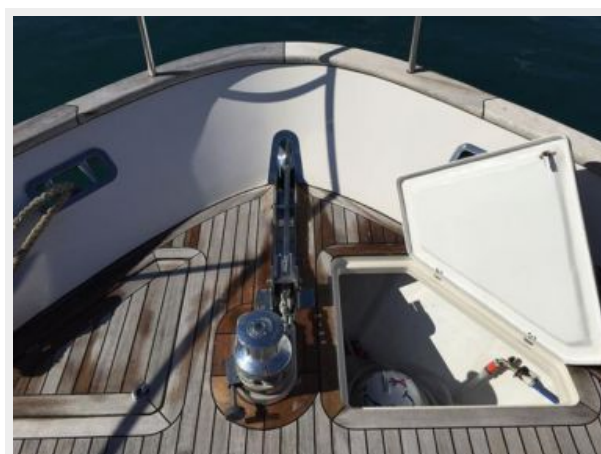
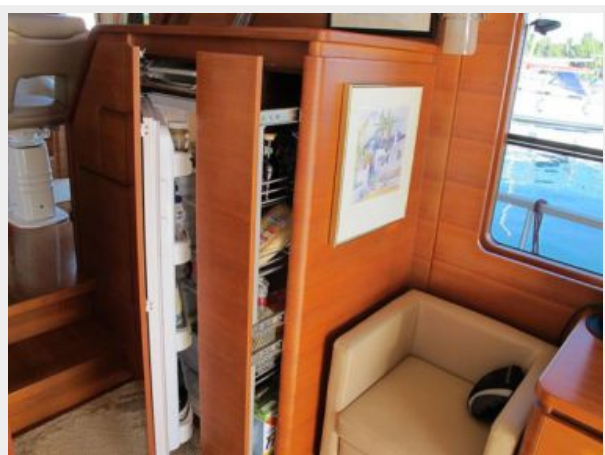




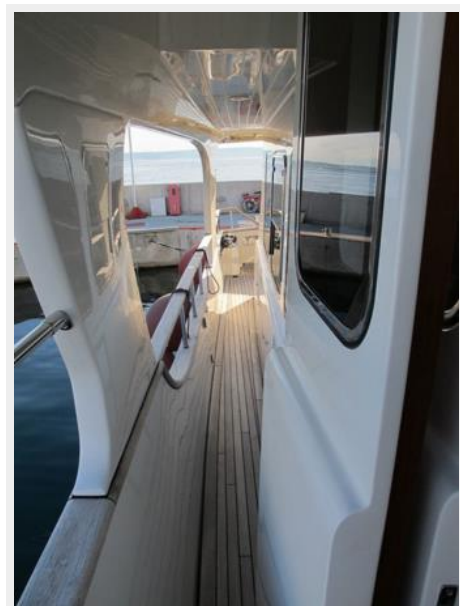




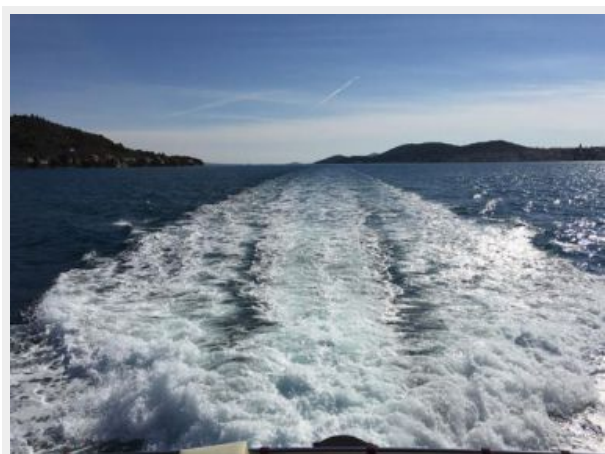


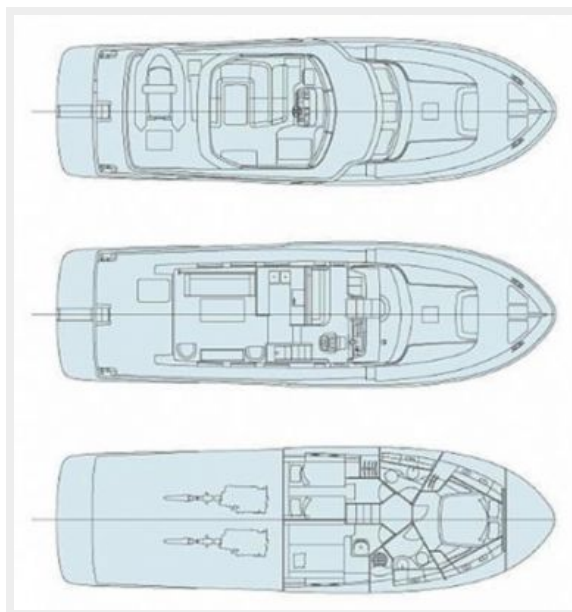












КОНТАКТЫ

Андрей Шестаков (Andrey Shestakov) – ведущий яхтенный брокер отдела продаж яхт и судов компании Shestakov Yacht Sales Inc. Официальный представитель Shestakov Yacht Sales Inc. для русскоговорящих клиентов в центральном офисе компании в Майами/Форт Лодердейл/Флорида/США.

Контактная информация

Email: andrey@shestakovyachtsales.com

Web: shestakovyachtsales.com

Телефоны

Краснодарский край: **+7(918)465-66-44**

США, Майами, Флорида: **+1(954)274-4435**

Время работы

Понедельник – Суббота: **9:00 - 21:00**
EDT

Воскресенье: **Закрето**

Адрес



Harbour Towne Marina, 850 NE 3rd St,
STE 213, Dania, FL 33004