

MY GIRL I — WESTPORT



Builder: WESTPORT

Year Built: 2007

Model: Motor Yacht

Price: PRICE ON APPLICATION

Location: United States

LOA: 164' 0" (49.99m)

Beam: 30' 10" (9.40m)

Max Draft: 7' 6" (2.29m)

Cruise Speed: 20 Kts. (23 MPH)

Max Speed: 24 Kts. (28 MPH)

Our experienced yacht broker, Andrey Shestakov, will help you choose and buy a yacht that best suits your needs **MY GIRL I — WESTPORT** from our catalogue. Presently, at Shestakov Yacht Sales Inc., we have a wide variety of yachts available on our sale's list. We also work in close contact with all the big yacht manufacturers from all over the world.

If you would like to buy a yacht **MY GIRL I — WESTPORT** or would like help answering any questions concerning purchasing, selling or chartering a yacht, please call **+1(954)274-4435**

TABLE OF CONTENTS

TABLE OF CONTENTS	2
SPECIFICATIONS	6
Overview	6
Basic Information	6
Dimensions	6
Speed, Capacities and Weight	6
Accommodations	7
Hull and Deck Information	7
Engine Information	7
DETAILED INFORMATION	8
Walkthrough	8
Upgrades & Features	9
Main Deck	10
Main Salon	10
Dining Salon	11
Day Head / Main Deck	11
Galley	11
Pilothouse	12
Master Suite / Owner's Foyer & Head	14
Guest Staterooms	15
Guest Heads	16
VIP Stateroom & Head	16
Captain's Suite & Head	17
Upper Lounge / VIP Lounge	17
Bridge Deck / Day Head	18
Bridge Deck	18
Fore Deck	19
Sun Deck	19

General Construction	20
Electrical Equipment	21
Superstructure	24
Steering System	32
Satellite Television / Camera System	33
Interior Design	34
Swim Platform	35
Engine Room	35
Dive Equipment	36
Tender & Shore Boats	36
Remarks	36
Exclusions	37
Exclusions	37
Disclaimer	37
PHOTOS	38
Salon	38
Aft Deck	38
Salon	38
Salon	38
Salon	38
Dining	38
Main Foyer	39
Dining	39
Main Foyer	39
Galley	39
Galley	40
Galley	40
Pilothouse	40
Pilothouse	40

Master / Office & Lounge	40
Master / Office & Lounge	40
Master Stateroom	41
Master Stateroom	41
Master Stateroom	41
Master Stateroom	41
Master Head	41
Master Head	41
Guest Stateroom / Starboard	42
Guest Stateroom / Starboard	42
Guest Head	42
Guest Stateroom / Port	42
Guest Stateroom / Port	42
Twin Guest Stateroom / Port	42
Twin Guest Stateroom / Port	43
Twin Guest Stateroom / Starboard	43
Twin Guest Stateroom / Starboard	43
VIP Stateroom / Bridge Deck	43
VIP Sitting Area	43
VIP Head / Bridge Deck	43
Balcony	44
Upper Deck / Service Area	44
Skylounge	44
Skylounge	44
Bridge Deck	44
Sun Deck	44
Sun Deck	45
Sun Deck	45
Sun Deck	45

Sun Deck	45
General Arrangement	45
CONTACTS	46
Contact details	46
Telephones	46
Office hours	46
Address	46

SPECIFICATIONS

Overview

"My Girl I" offers six staterooms with VIP on bridge deck with a private balcony; she has maximized every space of the vessel, but keeping her at 49.9 meters. She offers large area spaces with comfort, shallow draft, great speeds, efficiency and relative low maintenance. She has low hours and has been maintained by her original owner and no expense has been spared to maintain her in a world-class manner. The Westport 50 Meter is a truly well thought-out vessel, which with collaborative information and design from previous Westport owners and the Westport design team, they were able to build the largest vessel possible at 50 Meters and right under 500 tons.

Basic Information

Category: Motor Yacht	Sub Category: Tri-Deck
Model Year: 2008	Year Built: 2007
Country: United States	Fly Bridge: Yes

Dimensions

LOA: 164' 0" (49.99m)	Beam: 30' 10" (9.40m)
Max Draft: 7' 6" (2.29m)	

Speed, Capacities and Weight

Cruise Speed: 20 Kts. (23 MPH)	Max Speed: 24 Kts. (28 MPH)
Displacement: 690000 Pounds	Water Capacity: 2000 Gallons
Holding Tank: 1500 Gallons	Fuel Capacity: 20000 Gallons

Accommodations

Total Cabins: 6	Sleeps: 12
Total Heads: 16	Captain Cabin: True

Hull and Deck Information

Hull Material: Fiberglass	Hull Configuration: Semi-Displacement
Hull Designer: Garden/Olson	Exterior Designer: Donald Starkey
Interior Designer: Westport	

Engine Information

Engines: 2	Manufacturer: MTU
Model: 16V4000	Engine Type: Inboard
Fuel Type: Diesel	

DETAILED INFORMATION

Walkthrough

Entering "*My Girl I*" from the starboard amidship you enter into a large foyer with an elegant staircase going to the VIP suite/bridge deck or down to the four lower guest staterooms. Going aft of the starboard foyer, you enter the formal dining area with seating for twelve, with buffets port, starboard and aft, separating the dining salon from the formal salon, just aft. The woodwork is Mahogany and Pommele Sapele accents (from West Africa). The lower salon has sofas port and starboard with an occasional chaise placed accordingly for a casual conversation area.

The aft deck is accessed through double electric doors; a large wood elongated table with seating for twelve is placed in the middle of a large aft deck. Air conditioning/heat to the aft deck is supplied from the aft deck table overhead. A large walk-behind bar with barstools is located to port with a TV, with surround sound distributed throughout the aft deck.

Forward of the dining area port side through an electric door you enter the galley and pantry. The galley features a full complement of commercial equipment, with dumbwaiter for bridge deck. Forward of the galley on port is a walk-in freezer and refrigerator with pantry and commercial icemaker.

Going forward from the starboard foyer, the day head is to port, then forward is the Owner's foyer.

Upon entering the master suite, you are in the owner's office/lounge, and then further forward, you enter into a full-beam master stateroom with large sea glass windows port and starboard, which offer panoramic views. The master head features a his/hers arrangement with a shower aft, tub forward and skylights on port and starboard to offer natural light.

The starboard foyer amidship opens up with a large staircase, if you go up; it leads you to the VIP suite/bridge deck

Down to four more guest staterooms. The port and starboard aft guest staterooms are mirror image of each other and offer king size beds and an en-suite head. The port and starboard forward guest staterooms are also a mirror image of each other, but offer two twin berths and an en-suite head.

Entering the bridge deck from the mid staircase, the VIP suite on the bridge deck is to starboard with a king size berth and private head, again, with excellent views; she also features a private balcony. The skylounge is aft of the VIP and full-beam with a walk-behind bar and four bar stools to port. To starboard is a full-length sofa with cocktail table and to over-sized occasional chairs.

On the skylounge aft deck there is a large round table that seats eight and offers excellent views from the full-beam upper deck.

The flybridge is accessed from a staircase through an electric hatch. Forward is a large Jacuzzi

tub and three chaise loungers, for excellent views from the Jacuzzi, which is partially protected with glass windscreen.

Aft of the staircase mid deck is a large walk-behind bar with six bar stools, forward with floor to ceiling clear glass wind screen protection for cruising.

Upgrades & Features

- 16V4000 M-90 3650hp with 3800 hours
- VSAT KVH V-11 (New 10/2015)
- KVH SAT TV HD-11 (New 10/2015)
- MCA/ABS Class Vessel
- 6-Staterooms
- Updated helm with custom touch-screen monitor and full function helm seats with monitors
- Zero Speed Stabilization (4 fins) Naiad 22 sq. ft. X 4
- 31 Ft. Beam
- Bow & Stern Thruster
- 20" Dual Prop 80hp capable of double clutch 2 PTO's for 100hp
- Shallow Draft 7'6"
- 48 Ton air conditioner
- Fire Sprinkler System throughout
- Exterior cushions recently replaced
- Low maintenance fiberglass construction with the use of high technology PVC cores and Carbon Fibers, in some areas, vacuum bagged (high density); the keel pad, strut palm and stabilizers are done with resin infused
- (3) Generators (1 night generator)
- Make-up air – (4) units throughout vessel
- Central Hydraulic system, also provides a back-up to the steering system for redundant
- Twin 11,000 lbs. anchor windlass systems
- Sea-glass throughout vessel
- Bow and Stern Thruster
- Passerelle by **Nautical Structure 19'6"** with its own power pack
- Seamless transfer between generator with manual sync
- Westport Vessel Information System (Intelisea) with several keypad displays throughout vessel, monitoring fire, bilge, security, fuel, sanitation, navigation lights, AC power loads
- 24 Knot max speed
- 5000 NM range at 10 knots
- 1650 NM range at 20 knots
- Tender garage
- Diesel fueling capabilities for small boats, as well as electrical outlet for small boats on stern

Main Deck

- Teak decks on aft and side decks
- Teak dining table with leaves for seating up to twelve
- (12) Dining chairs
- Settees facing inboard, with cushions and covers
- (2) Cocktail tables between aft settees
- Traditional full-service bar
- Teak bar top and work surfaces
- Refrigerator
- Ice bin
- Sink
- Bottle storage
- Barware storage
- Lighting control for aft deck
- Entertainment system controls
- Three barstools with footrests: Crown LTD: Stepped bases with backrests 15 inch circular foot rests and quick release bases
- Removable, stowable, see-through sun screen canopy provides shade at aft end of deck
- Wing Doors - Aluminum framed laminated glass doors
- Sea locks for open position
- Passerelle see hydraulic system
- Nautical Structures: 19.66 overall with fold under gangplank
- Stand-alone hydraulic system
- At starboard aft stairs in garage
- Teak surface
- Hydraulic raise and lower 45 degree slewing
- Wireless remote
- Hose Bibs -For wash-downs
- Stainless Rails
- Railings to be mirror polished stainless steel, 2" round top rails with 1 ½" round stanchions
- Windows - Frameless, bonded with polyurethane system. Tinted tempered glass thicknesses in accordance with ABS

Main Salon

Upon entering the main salon through the wide glass doors opening from the aft deck, you are immediately struck by the warmth and elegance of the interior decor. There are two commodious sofas to port and starboard, with accenting furniture. This is an elegantly comfortable area to enjoy the requisite 50" wide screen plasma TV that rises out of the forward cabinet

- Main Salon Lounge
- Fixed Cabinetry

- Entertainment Center – high-gloss color complimentary to décor
- (2) Sofas aft port and starboard
- (2) Cocktail tables
- (4) Occasional chairs
- (2) Loose ottomans
- (4) End tables
- Desk and chair
- Aft entry aluminum framed, glass, counter-pull, powered open/close sliding door with pneumatic seal, painted to match boat

Dining Salon

Forward from the main salon is the formal dining room, separated by the center buffet, with access each side via sliding doors. Servers have easy access from the galley via an automatic door through the pantry. There is also access from the main entrance foyer to starboard through another sliding door.

- Formal dining table - Pommele Sapele table with Mahogany accents accommodates twelve guests
- Overhead detail - Headliner material and design per designer, with distinctive overhead feature over the dining area
- Buffet/storage - Buffets to port, starboard, and aft provide storage for 5-piece 12 place settings china, formal flatware, and stemware
- Loose furniture (12) formal dining chairs

Day Head / Main Deck

- Lightweight stone vanity top
- Copper under-mount sink
- THG faucet
- Lightweight stone flooring
- THG coordinating bath accessories

Galley

Professional chef's galley with a commercial atmosphere; stainless steel counter space with ample room for food preparation, food lift (dumbwaiter) and separate pantry with Corian countertops. Walk-in freezer, cooler, and dry storage shelves for extended cruising

Main Galley Pantry

- Prep Counter - Corian countertop, Advance sink and faucet

- Upper Storage Cabinets
- Appliances
- Dishwasher – Kitchen Aid two-drawer stainless
- Instant hot water dispenser - Model #Insinkerator C1300
- (2) Coffee makers - Fetco Model CBS-18-3
- Espresso machine - Astra gourmet GAP
- Microwave oven - Sharp R-22-GT
- Trash bin – built-in
- Wine cooler – Euro, 60 bottles
- Lower prep cabinets - Stainless steel with integrated stainless steel preparation sink, and countertops, Sink/faucet - Chicago 540LPL-12WXF, Pot/Kettle-filling faucet - Chicago #515
- Upper storage cabinets, stainless steel, designed, built and installed by commercial kitchen company
- Dumbwaiter/food lift – Inclinator, Winding drum car (interior dimensions 2'-2" x 1'-10") with access to main deck galley, bridge deck pantry, sun deck
- Toaster
- Food Processor - Waring FP-40-C
- Mixer, 7-Qt. - Genural MM-7
- Hot food well, built in - Wells HMP-6ULD
- Induction cook tops, including fiddle rails – Cooktech MCD2502F, Cooktech MCD3500
- Combination oven/steamer - Electrolux
- Salamander broiler - Garland SERC-680
- Stainless steel L-shaped vent hood with lights & fire suppression, self-contained
- Refrigerated drawers with remote compressor - Jade JRLH02R-T-36
- 24" Griddle – Wells
- 24" Charbroiler - Wells
- Convection oven, Commercial half-size- Moffat E25B
- Dishwasher, high temperature - Insinger GS-302
- Disposal - Insinkerator LC-50
- Trash compactor (1) GE
- Reach-in refrigerator - Continental IRSE
- Icemaker with bin - Hoshizaki KM-500MAH
- Flooring - Azrock commercial flooring
- Dry storage shelving including bins and baskets
- Built-in freezer/refrigerator, built to maximize storage and minimize noise, remote compressors, 208volt/3phase/60cycle power, stainless steel racks and circulation fans

Pilothouse

Accessed via crew stairwell or stairs from main side decks, and for guests from bridge deck lobby, the bridge and radio room contain the most current and convenient equipment available today. The expansive settee is raised to provide excellent sight lines of the panoramic view.

- Bridge console - Leather-covered dash panels, Pommele Sapele panels with solid Mahogany edge
- Traditional wooden helm wheel - Pommele Sapele with Mahogany trim
- Chart table - to port side of main helm, 5 drawers Settee - Covered in leather
- (2) Tables at settee to be Pommele Sapele panels with solid Mahogany edge
- Helm Chair – Norsap custom built with computer chair station (2015)
- Storage - For 16 courtesy flags
- Wall Treatments
- Mahogany and leather panels
- Lighting - Halogen down-lights - Savage Marine - Iona

Radio Room/Office

- (1) Built-in desk
- (1) Loose desk chairs
- Furuno DGPS
- Furuno VHF

Radar

- Primary long range detection, navigation and collision avoidance
- Furuno 2127 Black Box with 8' Array Radar, includes 25kW 96nm black box processor with ARPA, AIS I/F, keyboard/trackball, 8' Open Array, 24vdc.
- Furuno Gyro Interface Board MT Chart plotter, GPS, Gyro A/P, Speed
- Furuno 2137 30W S-Band with 10' Antenna
- Interface to Chart plotter, GPS, Gyro A/P, Speed

Chartplotter

- MT Chart Plotter Software with AIS level 3, ARPA, Playback, User Charts, Tides & Currents, Raster BSB, NDI, NOS/GEO.

GPS

- Furuno port DGPS. Includes MX420-8 port display

AIS

- Furuno FA100 AIS System
- Furuno AIS Pilot Plug
- Furuno GPS/VHF Combo

Communications

VHF

- Furuno 25W GMDAA DSC VHF/FM Radio

- Interface to GPS
- Standard Matrix Black DSC/VHF Radio
- Handheld VHF - Icom GM1500 GMDSS Handheld VHF

G.P.I.R.B. (2) McMurdo SatFind 406MHz GPIRB

S.A.R.T. (2)McMurdo Portable SART

Satcom

- KVH VSAT V-11 (2015)
- Sat Phone Fleet55

Telephone System

- Panasonic KXTD1232-5 Digital KSU Phone
- Panasonic KXT7453 Digital Display 24 Button White Handsets with speakerphone (4)
- Panasonic KXT7425 Digital 24 Button White Handsets Speakerphone (19) Panasonic 900MHz Multi-line Cordless Telephone
- Black Box Lineshare Pro 102 Fax Interface
- APC 1000VA 670W Smart UPS. Full load run time 6 minutes

Jastrom Steering Autopilot – Simrad Robertson controlled by MT through touch screen monitors IBS integrated system

Cellular Telephone Telular SX5e GSM 850/1900 Cellular Phone, Fixed wireless for Voice, Fax, PC

Depth - Speed – Wind

- Brooks and Gatehouse Hydra 2000 Full-Function Display includes air temperature and barometric pressure options
- Full-Function displays in Pilothouse, Captain's Quarters and Crew Area

Color Sounder Furuno FCV1200 Black Box Sounder **Doppler Log**

- Furuno DS80 AmHz IMO Doppler Speed Log
- Furuno DS80 Gate Valve and Tank
- APC 1000VA 670W Smart UPS, full load run time 6 minutes

Master Suite / Owner's Foyer & Head

Master Suite and Owner's foyer Private Owner's foyer leads from starboard entrance on main deck to owner's office/lounge. Door to stateroom opens off of lounge. Full-beam stateroom features a sitting area to starboard, makeup/vanity to port, in addition to the king sized berth. The concealed closet adds generous storage to stateroom. Private his and her dressing rooms and

heads are separated by the shared shower and whirlpool tub. His and her dressing rooms include ample storage in drawers and lockers

Master Stateroom

- King-sized berth with Beauty-Rest innerspring mattress
- Entertainment center/ dresser combination
- Dressers – (2) 3-drawer nightstands
- Loose Furniture - Vanity / make-up table and chair
- Door handle - THG
- Lighting - Halogen downlights - Savage Marine Lighting
- Framed mirrors above vanities in his and her heads
- Full-length mirrors in dressing rooms
- Lighted make-up mirror on dressing table

Master His/her Dressing Room

- Dressing table with stool - Pommele Sapele with Mahogany accents, lighted make-up mirror on dressing table in her dressing room
- Full-length mirrors in dressing rooms
- Framed mirror above dressing table in her dressing room
- Accent lighting

Master Head

- Vanity - countertop is lightweight stone, two vitreous china sinks, THG fixtures, THG accessories
- Windows - Skylights – fixed (2)
- Flooring - Lightweight Onyx
- Framed mirrors above vanities in his and her heads
- Headhunter Royal Flush Hydro Vac toilets / Gold (2)
- Headhunter BDS-OG Bidet, white (1) with gold bidet fixture set from Headhunter
- Shower & Jetted Tub with Duo Jet side jet
- Marble surround with THG thermostat and fixtures
- THG accessories

Guest Staterooms

All Guest staterooms provide built-in dressers and nightstands, including wardrobes with full-length mirrors inside the doors. Loose furniture includes a chair and desk. The aft staterooms feature king berths, with leather wrapped rails and upholstered headboards. Wall treatments and carpeting. Each Guest stateroom has built in entertainment systems and A/V equipment complemented by Ipad driven by Crestron.

- #1 Guest stateroom- Port Aft

- Featuring king size berth with upholstered headboard and fabric wrapped rails
- #2 Guest stateroom - Stbd Aft
- King berth, configuration
- #3 Guest stateroom - Port Fwd
- Two twin berth configuration
- #3 Guest Head - Port Fwd
- Two twin berth configuration
- #4 Guest stateroom - Stbd Fwd.

Guest Heads

- Vanity - Pommele Sapele with Mahogany accents, lightweight stone countertop, and (2) vitreous china sinks THG fixtures & accessories
- Glass - Fixed, 14 ½" oval portlight with removable stainless deadlight cover
- Flooring - Lightweight stone
- Toilet - Headhunter Royal Flush Hydro Vac / Gold
- Shower/Tub combination
- Frameless tempered glass doors
- THG thermostat
- THG fixtures
- THG Accessories

VIP Stateroom & Head

VIP suite on bridge deck has a dressing room including a dressing table with chair, leading to the head with double sinks, toilet and bidet. Stateroom, in addition to the berth, has a seating area for conversation, or viewing the 32" plasma flat screen TV. Suite includes a private terrace on starboard side with teak deck furniture

- King berth - upholstered headboard, two drawer storage underneath
- Dressing table - Pommele Sapele with Mahogany accents, lighted make-up mirror on dressing table
- Two nightstands - Pommele Sapele with Mahogany accents
- Dressers with built-in entertainment center - Pommele Sapele with Mahogany accents, full-length mirror
- Loose Furniture - Two occasional chairs, one end table, chair for dressing table, dressing table
- Flooring - Lightweight Onyx
- Wall Treatments
- Framed mirror above dressing table
- Headliner
- Halogen downlights - Savage Marine Lighting, Iona

- Accent lighting

Head:

- Vanity - countertop is lightweight stone, two vitreous china sinks, THG fixtures, THG accessories
- Coverings
- Flooring - Lightweight Onyx
- Wall treatments
- Framed mirrors above double sinks
- Full length mirror in dressing room
- Lighted make-up mirror on dressing table
- Headhunter Royal Flush Hydro Vac toilets
- Headhunter BDS-OG Bidet, white (one) with Headhunter gold bidet fixture set
- Shower/Tub combination (jetted tub)
- Marble surround with THG thermostat and fixtures
- THG accessories
- Frameless tempered glass doors

Captain's Suite & Head

- Berth – Queen-size berth, storage below, rails wood-wrapped
- Desk & nightstand Pommele Sapele with Mahogany accents
- Wardrobe - Pommele Sapele with Mahogany accents, full length mirror on door
- Dresser/entertainment center combination - Pommele Sapele with Mahogany accents
- Loose Furniture - Desk chair
- Halogen downlights - Savage Marine Lighting, Iona
- Accent lighting

Head:

- Vanity - Pommele Sapele with Mahogany accents, countertop is lightweight stone, under-mount sink, THG fixtures, THG accessories
- Lightweight marble tile flooring
- Framed mirror above vanity
- Molded fiberglass pan
- Marble surround with Grohe fixtures
- Ginger bath accessories
- Frameless tempered glass doors

Upper Lounge / VIP Lounge

The lounge on the upper deck of this tri-deck vessel offers more informal atmosphere, with

towering views to port, starboard and aft. The lounge amenities include a vista bar to port, a game table, a desk and chair, 61" LCD flat screen TV and comfortable television viewing area. There is easy access to the bridge deck aft for alfresco dining. Your options are truly open here.

Bridge Pantry Served by the dumbwaiter from the galley, the pantry allows convenient beverage and food service to the bridge deck

Bridge Deck / Day Head

- Lightweight stone vanity top
- Copper under-mount sink
- THG faucet & bath accessories
- Lightweight stone flooring
- Door handle - THG

Bridge Deck

VIP Terrace

- Teak Deck
- Hose bibs - For wash-downs
- 84" round teak table
- (10) Tteak dining chairs
- Built-in aft settees to port and starboard, with cushions and covers
- Fwd settee - seats fore and aft, with cushions and covers
- Fwd settee teak table with clear gloss finish, and cover
- Sun shade canopy
- Removable, stowable, see-through sun screen canopy provides shade at aft end of deck
- Wing doors
- Sea locks for open positio port and starboard
- Flagstaff – Stern flagstaff for 5' x 8' ensign

VIP terrace

- Starboard, with private entrance to VIP suite
- Teak settee
- Two end tables
- Bar terrace
- Portside, with entrance to vista bar
- Two occasional chairs
- Occasional table

Wing stations - Outside pilothouse, port and starboard

- Molded composite covers
- Electronic engine controls
- Main engines start and stop
- Jog steering
- Rudder angle indicator
- Bow thruster
- Horn controls
- Stainless Rails
- Railings mirror polished stainless steel, 2" round top rails with 1 ½" round stanchions
- Windows
- Frameless, bonded with polyurethane system. Tempered glass thicknesses in accordance with ABS. Tinted except for forward facing Pilothouse windows

Fore Deck

- Foredeck Tender storage
- Universal Tie-Down System to accommodate the tender and water toys on foredeck option
- Non-skid deck
- Hose bib - for wash-downs
- Jack staff - for pennant flag
- Ship' bell, chrome
- Deck lighting
- Davit: Nautical structures Euro 1700 - 1700 lb.
- Telescoping base
- Full hydraulic proportional control
- Back up from emergency bank
- (2) Anchor windlasses
- Hatch - flush on CL
- Chain locker access and fender storage
- Access for windlass control pennants
- Access for chain wash-down controls
- Fore deck seat - with cushions and cover
- Access Stairs
- Stainless framed
- Teak tread
- Port and starboard

Sun Deck

- Teakdecking Systems
- Hose bibs - for wash-downs
- Mast – Composite

- Electronics
- Anchor light
- Deck lighting
- Air horn - Kahlenberg Model F3 with light
- Hardtop - Integrated with mast - Composite
- Skylights, tinted acrylic
- Sun pad - Large, expansive sun pad forward, with covers

Windscreen

- Stainless steel continuous handrail with ¼" acrylic clear or smoked panels between stanchions from mast base forward
- Generously-sized hot tub, located forward on sun deck
- Dumbwaiter/food-lift from galley
- Full service U-shaped bar
- Sink
- Refrigerator
- Davit 1500 lb.
- Periscoping base
- Full hydraulic proportional control
- Back-up from emergency bank
- Chocks (Universal Mounting System)
- One set of chocks comes with the boat
- Life rafts
- In cradles, with hydrostatic release
- Stainless Rails - Railings to be mirror polished stainless steel, 2" round top rails with 1 ½" round stanchions
- Powered sliding hatch to central stair

General Construction

CONSTRUCTION AND EXTERIOR FINISH

Hull - fiberglass mat and roving with Vinylester resin and Airex PVC core. Structural framing to be laid up using a Combination of fiberglass and carbon fiber reinforcement. House and deck structures, cored composite construction. Core material and density will vary throughout to optimize engineered structures

PAINT - TOPSIDES

Awlgrip high-gloss polyurethane. Hull and house color to be Westport white. House and hull side window recesses metallic gray. Boot stripe will be acrylic high gloss black

BOTTOM PAINT

Two coats of Micron 66 or equivalent black bottom paint over Interprotect epoxy barrier coat or equal

HULL SHELL CONSTRUCTION

Mold: The Hull is laid up in a permanent female mold including molded in outages and inserts for bow thruster tube, transducer blocks, lightning and grounding plates, stabilizer tubes, raw water inlets, underwater exhaust, shaft logs, strut palms, and rudder shafts

Lamination: Sprayed exterior Gelcoat is followed by hand laid fiberglass mat and roving with Vinylester resin for the outer skins, vacuum bagged foam core (high density in appropriate areas), and hand laid fiberglass mat and roving with Vinylester resin for the inner skins. The keel pad, strut palms and stabilizer pads will be resin infused using Vinylester resin

Hull Structure: Hull stringers, webs and stiffeners are either resin infused (straight longitudinal only) or hand-laid. They are of fiberglass mat and roving and/or carbon fiber with Vinylester resin over foam forms. All soles and structural bulkheads are of fiberglass and foam sandwich construction and are resin infused with Vinylester resin. All structure is substantially tabbed and/or bonded to the hull shell

Electrical Equipment

Electrical - Source Power (Generators & Shore Power) Description - There are three electrical generators providing AC power at 120-208volt/3phase/60cycle. Two primary generators located port/starboard and night/secondary generator located Midship in the engine room. One primary generator is fitted with a dry stack option that allows the exhaust to be discharged above the sun deck

Primary Gensets – 99Kw ‘we’ wound, 1800 rpm with sound enclosure, in/sep muffler and dual vibration mounts. Exhaust to be silenced and separated with underwater discharge of cooling water and gas exhaust at transom. Stbd Gen to have ‘dry stack’ exhaust ‘Y’

- Northern Lights (ADE) includes seawater pump/heat exchanger
- Northern Lights (ADE) – sound enclosure

Secondary/Night Genset -55kW ‘we’ wound, 1800 rpm with sound enclosure, in/sep muffler, and dual vibration mounts. Exhaust to be silenced with underwater discharge of cooling water and gas exhaust at transom

Northern Lights (ADE)

Shore power cords – 100 amp, 4 wire with ground, 3 phase (2), Anexter or equal

Shore Cord reels – Glendening, Cable Master motorized shore power reels with local control at transom: Two systems total

Electrical - AC Distribution Description - AC service is provided from four independent sources; Shore power, two primary generators and one back-up/night generator. Shore power is provided through electrical conditioners that allow a large variety of power forms; single phase, three-phase, combination, high voltage, or low frequency to be converted to ship power. All sources of electrical power are routed through a main electrical switchboard located in the control room, then on to sub-panels and individual loads. All circuits are protected by coordinated breakers. The main electrical system is 4 wire, 3 phase 208 volts with 120 volt single phase branch circuits where required **Seamless transfer** – between all generators

Wiring – single and multiple conductor, ABS Type or Class Approved

Main switchboard – Extruded aluminum construction with powder coat finish. Built to IP20 level of protection. Includes control and monitoring electronics

- Forced draft cooling
- Full gauge package for all sources, volts/amps of each line, phase, power, power factor and frequency

Generator gauge package

- Northern Lights (ADE)
- Generator speed control for manual sync

Interior Lighting – Lite Touch system with Vimar bezel on all switch plates **Electrical - DC Distribution Description** - 24v DC power is provided by numerous accumulator batteries and charger/power supplies. House 12v DC is provided by DC-DC converter. Power is distributed around the vessel from the main switchboard located in the control room to locally operated sub-panels except dedicated emergency DC power which is distributed independently of the main distribution network, and also services the emergency lighting system throughout the vessel. There is a dedicated light in all cabins as well as common areas and stairwells for egress in the event of an emergency

Batteries – 12vDC batteries of the Absorbed Gas Mat (AGM) type wired in series parallel for 24vDC systems

- Main engine start bank, 24vDC series parallel (4) 8D
- House bank, 24vDC series parallel (4) 8D
- Generator start bank, 24vDC series (2) Group 31
- Emergency bank, 24vDC series (2) (4) 8D
- Radio bank, 12vDC (1) Group 31
- **Battery chargers** – 12 and 24v DC chargers/rated power supplies
- Main engine start bank, 24vDC, 35amp
- House bank/Ship's system 24v DC, 95 amp
- Generator start bank, 24vDC, 13 Amp
- Emergency Bank 24vDC, 35 amp 95 amp
- Radio bank 12vDC, 14 amp

- DC – DC Converter

Vessel Alarms & Monitoring On *"My Girl I"* the ship's systems are monitored by Westport's Proprietary Vessel Information and Control System (Intelisea), with sever display and control pads, located throughout the vessel (galley, crew galley, control room), with the main display located at the helm.

The following are monitored:

- Fuel
- Carbon Monoxide
- Security at all doors and hatches
- Black water
- Fire – the main fire pump is monitored and can be remotely started from any fire station
- AC Power

AV / Electronics Each accommodation space is equipped with audio/video entertainment equipment which provides for a variety of entertainment choices from broadcast radio and television (NTSC/PAL), satellite based radio and television as well as on board audio/video sources such as DVD and CD

Navigation Electronics In 2015 a new Integrated Navigation System (INS) was installed by Marine Technologies (MT), which designs and builds navigation systems for vessels all over the world, for easy access to all navigation systems through any multi-function work station (MFW). Each touch screen monitor on "My Girl I" is its own work station, including each helm chair. These stations are designed for the ease of operation to reduce fatigue and increase performance, all designed to enhance the vessel's safety. The benefits are:

- User friendly navigation system
- No need to move to a different work station
- All functions can be monitored and controlled from each work station, radar CCTV, auto pilot, power management, etc.

Helm monitors were replaced with touch-screen, offering each monitor access to all of the navigation equipment, which can be viewed with a swipe of a finger. This equipment includes satellite based position; speed and heading information, gyroscopic and magnetic heading data, long range surface detection, electronic charting and depth finding

Glass Bridge (Bridgemate Solutions) New 2015

At helm (5) new 26' touch screen monitors, each one is multi-function workstation with capabilities to bring up both radars, plotters, depth sounders, autopilot, stabilizers, there are also additional electronics

In addition, (2) New custom helm chairs, each with its own monitor (work station), each station is independent and redundant mainframes. October 2015, the VSAT V11 KVH installed new KVH HD-11 High Definition System with world LNB and various TV's and equipment needs to be

further upgraded to HD

Central Equipment

- Kaleidescape 220V Base System
- Direct TV D10 DSS Satellite Receiver
- Channel Plus 4 I/P/ Digital Quad Processor
- Crestron CNX-BIPAD8 Processor
- Speaker Craft BB1235 12-Channel Amplifier
- Crestron Compact Fixed Resource Control System W/E
- Crestron CNPWS-75 Power Supply

Each of the following areas is served by the central equipment, with Audio and Video entertainment systems installed in each of the following areas:

- Sun Deck
- Captain's Cabin
- VIP Stateroom
- Upper Lounge
- Master Stateroom
- Master Stateroom Office/Lounge
- Galley
- Dining Room
- Main Salon
- Upper Aft Deck
- Main Deck Aft
- Crew Lounge

Superstructure

Main Deck/Bridge Deck/Sun Deck Lamination: Sprayed exterior Gelcoat is followed by hand laid fiberglass mat and roving with Vinylester resin for the outer skins, vacuum bagged foam core (high density in appropriate areas), and hand laid fiberglass mat and roving with Vinylester resin for the inner skins

SYSTEMS Tanks

- Fuel Tanks (Diesel)
- Fuel Tank #1: 1200 gallons
- Fuel Tank #1: 2130 gallons
- Fuel Tank #2: 980 gallons, port
- Fuel Tank #2: 3780 gallons, center
- Fuel Tank #2: 980 gallons, starboard
- Fuel Tank #3: 2830 gallons

- Fuel Tank #4: 2600 gallons
- Fuel Tank #5: 5500 gallons

Fuel Tank (Gasoline) Aluminum, 100 gallons, accessible via hatch in swim step

3 Grey Water Batch Tanks are discharged overboard are to the black water tank

Black Water Tank Molded FRP, 1500 gallons, fwd bilge

Fresh Water Tanks (Total 2235 gallons)

Fresh Water Tank A Port: Aluminum, epoxy coated inside, 600 gallons, control room bilge outboard

Fresh Water Tank A Stbd: Aluminum, epoxy coated inside, 600 gallons, equipment room bilge outboard

Fresh Water Tank B Port: Aluminum, epoxy coated inside, 195 gallons, control & equipment room bilge inboard

Fresh Water Tank B Stbd: Aluminum, epoxy coated inside, 195 gallons, control & equipment room bilge inboard

Fresh Water Tank C Center: Aluminum, epoxy coated inside, 645 gallons, and Lazarette bilge

Fresh Water Tank C Port: Aluminum, epoxy coated inside, 3220 gallons, and Lazarette bilge

Fresh Water Tank C Stbd: Aluminum, epoxy coated inside, 322 gallons, and Lazarette bilge

Fuel System Description - 20,000 gal (US) in multiple tanks with transfer system including two pumps, meter and distribution manifold. All consumers to draw from day tank filled via (2) fuel separators. In the event both separators are inoperable a filtered by-pass can be used to fill day tank. Fueling process is via either of three deck fill locations, (1) amidships, stb side and (2) aft, all tanks are vented to atmosphere on port side. Tank level monitoring is via electronic sensor and display with high/low level alarms. All tanks are vented to one of two 'vent tanks' which are monitored for liquid indicating an overflow of one of the attached tanks

Tanks – All aluminum, welded construction with internal baffles and inspection access to be manufactured by Freeman

Pumps

- Primary - 1 AC, 60 gpm
- Secondary – 1 DC positive displacement back-up/priming pump

Filters Generators (3) - Sea Pro 50 series

Fuel transfer (1) - SeaPro Filters

Fuel Centrifuge - (2) plumbed in parallel directly into day tank (4c) for 400 gph total capacity - Alfa-Laval

Meter – Positive displacement with numerical display and automatic pump shut off pre-set capability

Valves – stainless steel three piece ball-type for fuel transfer manifold and consumer isolation

Deck Fills – 2" stainless steel 'Diesel' with threaded cap

Lube Oil System Description - The vessels main engines and diesel generators can be maintained utilizing an onboard lube oil change system. A 230 gal new oil tank and equal sized used oil tank will be fitted within the engine room. New oil can be filled via 1 ½" deck fitting amidship on starboard side while used oil can be pumped ashore across transom. A portable AC powered pump is utilized to transfer to/from locations via hose whips and quick connect fittings from hard piping

Pump – 120v AC, positive displacement pump

Fittings – All Cad plate quick connect fittings

Deck Plate – located with midship fuel fill on starboard side

Tanks – Welded aluminum with internal baffles

Waste Water System Description - Black water is routed to an FRP tank while gray water is routed to an aluminum welded tank for onboard storage via Drain-Waste-Vent (DWV) piping. A certified Marine Sanitation Device is installed for discretionary treatment of all wastewater while in environmentally sensitive areas. Tank level monitoring is via electronic sensor and display with level alarms and all tanks are vented at mast. Discharge is via MSD or direct overboard via diaphragm pump. Also dockside pump out the starboard side

Pumps – high capacity solids handling AC diaphragm pump and DC back-up pump for discharge directly overboard **MSD** – Certified to meet MARPOL regulations as well as USCG Type II MSD **Black Water Tank** – FRP construction with internal baffles, 1500 gal. **Black water sump** – for transfer of black water from lower deck guest staterooms to holding tank

Fresh Water System Description - Freshwater is distributed via CPVC piping system, fully insulated, with dual centrifugal pumps (and reduced capacity DC back-up). Water is filtered for particulate and microorganisms prior to fixtures and utilizes pressure tanks to assist in surge free supply while dual hot water tanks are plumbed with hot water circulation ring for quick supply of hot water. Fresh water can be taken aboard via two deck fittings located port and starboard at the transom or through pressurized dock connection. Freshwater is generated on board by dual reverse osmosis water makers plumbed directly to storage tanks. Tanks are welded aluminum construction with internal baffles and sanitary class epoxy coated internal surfaces. Freshwater wash down fittings are located on all external decks

Deck fills – stainless steel 1 ½" round with threaded cap. (2)

Pressure connection – stainless steel construction

UV filter – for disinfection of potable water 30 gpm max

Dual particle filters – for removal of sediment, dissolved solids and contaminants to 20 microns plumbed in parallel. Stainless steel canister with replaceable filter cartridges

Pressure tank – FRP construction located at remote ends of piping system to reduce pressure drops due to intermittent loads

Watermakers - Sea Recovery Coral Sea 3600 GPD – Reverse osmosis type

Water Heaters – (3) dual element (for fast recovery) water heaters, 80 gallon capacity each. Plumbed in parallel and includes hot water circulation ring and pump. **Pumps** – (2) centrifugal pressure pumps, 30 gpm plumbed in parallel for high flow capability. One DC powered low flow pump for back-up service and system priming

Bilge System - The bilge system consists of 6 watertight zones which can be individually pumped via bilge suction manifold and electric bilge pump. The manifold allows cross over to the fire pump or diesel powered pump for back up. Additionally the engine room is plumbed with an oily water separator certified to meet MARPOL regulations

Pump, primary - Centrifugal, flooded suction, 100gpm/10 psi minimum

Pump, Back-up – See fire main back up pump (Shared on common manifold)

Oily water separator – for discharge of water containing oil from engine room Complies with MARPOL pollution regulations. 2.2 gpm

Deck Drain System - All decks are fitted with scuppers and piping system to drain water from rain/wash-down water. Scuppers are molded portions of the deck and fitted with polished stainless steel grates. All drain piping is of ABS approved materials, PVC – DWV and are led to laminated thru hulls located at the boot stripe with 2" check valves

Compressed Air Systems - The vessel will have a compressed air system for powering the ship's whistle as well as for use in the machinery spaces for air powered tools. Compressed air lines run to the bow and swim step. The system will consist of compressor, piping system, quick connect fittings, and (2) accumulator tanks for whistle

- Compressor – 3 phase compressor with storage tank, Max pressure to be 100psi
- Pressure tank – (2) FRP – 20 gallons
- Hose/Reel – Reel Craft - Hose ½" x 35'

Fire Hydrant System - The fire main system consists of six (6) fire stations distributed around the vessel, supply piping and two pumps. Each station contains a hose, angle valve and high/low volume nozzle. The electric fire pump (primary) can be started from any fire station, the pilot

house, or locally

Hoses (6) – 1 ½"x 50' FM listed lay flat type, NPSH thread

ABS Approved Fire Nozzles, ABS Approved, one at each of (6) hydrant stations

Pump, Primary – Centrifugal, flooded suction, 66gpm/50 psi minimum,

Pump, Back-up – Diesel powered, flooded suction centrifugal

Strainer – Sea suction strainer for fire/bilge manifold, Bronze 2" Y strainer, or equivalent

Seawater intake – Bronze with bronze grate

Hose Rack – FRP construction, white powder coat finish for rolled hose storage in fire stations

Fire Sprinkler System - The accommodation space is protected by a low pressure sprinkler system that uses vessel's fresh water supply until it is depleted, then automatically switches to seawater. The engine room is protected by a gas smothering FM200 system

Sprinkler System - The low pressure sprinkler system is a pre-charged type, automatic fire suppression system that operates in the 15 psi to 40 psi range. The piping is to be copper/nickel (CuNi) tube with Seapress (Viega) or similar, crimp fittings. The pump unit consists of two pumps, operating individually or in tandem depending on the demand for water as determined by the number of heat sensitive nozzles that have been triggered. A small pressure tank maintains the stand-by pressure in the system. A local control panel is located in the engine room and a mimic display is located in the pilothouse

Engine Room Fire System - Gas smothering system FM200 – For engine room protection, manual operation (with 30 second delay) includes discharge of gas and automated shutdown of fuel units, intake fans, and exhaust dampers

Semco Maritime – Central Bank Fire System

Description - The engine room and ventilation ducts are to be insulated against thermal conductivity meeting the A-30 rating and sound damping

Insulation – the bulkheads and duct work leading to the engine room lined with a thermal barrier of insulation

Galley Hood Fire System - Independent, fixed system to be located in the main Galley in the hood above the stove

Sound Attenuation - Sound plays a significant role in the comfort level of a high quality motor yacht. Because of this, J&A Enterprises, Inc. an engineering firm specializing in control of noise and vibration aboard luxury motor yachts of all sizes was used to develop a 'whole ship' sound reduction plan. Joseph Smullin, Founder, President, and principal engineer studied Westport construction techniques and assisted in developing details and insulation schedules that would

maximize noise/vibration reduction. Sound transmission throughout the vessel is controlled in several ways including double wall construction of bulkheads, dampening of sole structure in specific areas, absorptive and reflective materials within the engine room and vibration isolation mounting of rotating or reciprocating machinery

Engine room The engine room sound package consists of reflective barriers and absorptive insulation in addition to vibration/isolation mounting of equipment, piping and wiring that may transmit noise and noise attenuating/watertight doors

- Engineering – J&A Enterprises/Westport
- Watertight doors –Pacific Coast Marine
- Absorptive insulation – Sound Down
- Reflective material –1/8" to 3/16" aluminum
- Isolation mounts – Various per equipment manufacturer specs

Accommodation sound dampening Noise transmission between spaces in the accommodation area is via 'sound tight' construction, acoustic fill in double wall bulkheads, floating joinery connections in critical areas and isolation mounting of equipment and piping that may transmit vibration

Engineering – J&A Enterprises/Westport

Acoustic fill, Whisper Walls 3MThinsulate

Isolation material, Sylomar

Isolation mounts, various per item

HVAC Systems - Air Conditioning The interior of the vessel is kept at a constant temperature through the use of a seawater cooled/heated reverse cycle, treated water HVAC system. The capacity of the condensers is 48 tons and is distributed throughout the vessel via individual room air handlers of various sizes and BTU ratings. The entire system is run in either heat or cool modes while the individual air handlers in the master and guest staterooms allow autonomous heating. A portion of the HVAC system provides fresh air to make up for air lost through the head evacuation system thus providing fresh, dry air at all times providing a clean and healthy atmosphere

Description - HVAC system. Frigic HVAC system: (2) 3x8 ton) compressors and heating pump. The capacity of the condensers is 48 tons and is distributed throughout the vessel via individual room air handlers of various sizes and BTU ratings. A portion of the HVAC system provides fresh air to make up for air lost through the head evacuation system thus providing fresh, dry air at all times providing a clean and healthy atmosphere

Chillers - 208volt/3phase/60cycle, 24 tons each (2) mounted in stainless steel boxes with 3 compressors per unit

Air Handlers – 230volt/1phase/60cycle, various BTU as shown below The lower chiller unit was

replaced a few years ago. The upper unit has had (3) compressors changed out

- Sky Lounge/foyer, 104k BT
- VIP Stateroom/Head, 18k BTU
- Capt. Cabin, 10k BTU
- Pilothouse/Radio room, 50k 60k BTU
- Main Salon/Dining/Foyer, 90.2k BTU
- Pantry/Galley, 34.2k BTU located 1 deck above
- Owner's Area, 54.2k BTU
- Guest SR/Head, 14k BTU each (10k in each SR, 4k in each Head)
- Guest lobby, 6.2k BTU
- Crew Mess, 20k BTU
- Crew cabins, 4k BTU each (New)
- Laundry, 14k BTU
- Control Room, 14k BTU
- Main deck aft, 28k BTU

Make up Air – for cycling air through vessel interior

Frigit: Five units: Crew # 180, Guest # 250, Owner # 250, Main deck # 450, Upper deck # 450.
(Numbers equal cubic meters displacement)

Thermostat and controls – for control of individual air handlers and for main chiller control
Frigit, Digital fan control with individual heating controller. Air temperature sensor at controller

Mooring & Anchor Systems

Description - Vessel mooring system utilizes a combination of bitts, hawse eyes and winches
The fore deck has two hawse eyes per side, two bitts per side and a pair of mooring winches incorporated with the anchor windlasses

The side decks and aft deck have four hawse eyes per side with three bitts and a warping winch on each side

Additionally there are two mooring capstans and bitts on the swim step for Med style mooring and four cleats along the aft edge of the swim step for securing the tender

Vessel anchoring is accomplished through a set of anchor windlasses, anchor chain, Poole style anchors and fairleads (hawse pipe, spill pipe, etc.)

Windlass/winch combination The foredeck utilizes a combined windlass for anchoring and winch for mooring. The system is mirrored port and starboard and hydraulically driven yielding 11,000# pull

Anchor windlass, Maxwell Combination tensioner/roller/stopper (2)

Controls, Maxwell (2) Anchor wash down is via fixed nozzles located in hawse pipes, solenoid

controlled valves for port and starboard sides and is supplied with pressurized seawater from the fire main

Hawse Rings, bulwark – Mirror polished closed oval type

Hawse Rings, bustle Mirror polished closed type fit around corner of bustle and bulwark at corners of aft deck

Bitts, large – Mirror polished, twin horn type

Bitts, small – Mirror polished twin horn type

Warping winches – 8000# pull located aft on main deck

Mooring winches – 3500# pull, Located in bustle at swim step

Tender Cleats – Mirror polished Horn type for securing tender across transom

Anchor chain – ¾" short link galvanized. 500' port / 500' starboard

Anchors – Poole style polished stainless steel, 650# (2) Davis Anchor HP650

Hawse pipe/Anchor plate – Stainless steel, mirror polished anchor plates for protection of hull, includes stem plate

Swim step stairs - Stainless

Day shape mast – Manual telescopic

Dumbwaiter Inclinator Supply **Hot Tub System**

- German manufacturer: Hot tub and drain
- WPSY supply on pumps, heaters and final makeup to piping

Central Hydraulic System Description - The central hydraulic system provides power to the bow thruster, all winches, capstans, cranes/davits and transom door. Additionally, the system provides backup fluid power to the steering system in the event there is a failure in the steering primary hydraulic system. Power is provided to the system from a generator driven hydraulic pump with electric clutch. The system is provided with equal size pumps on both the port and starboard gensets allowing either generator to power the system. Additionally there is a DC powered power pack that provides reduced hydraulic power for backup or while main generators are shut down

Gauge package – includes pressure and flow gauges for each valve manifold

Bow thruster – 20" dual prop with 'in-hull' hydraulic motor - Producing 85 HP

Stern thruster - 20" dual prop with 'in-hull' hydraulic motor and external tube

Davit – periscope mast with fixed length boom, 1500# capacity, hydraulic. (2) Nautical Structures

Beam crane –driven by central hydraulic system

Passerelle: Nautical structures: 19'6" fold away with options Self-contained hydraulic power pack unit and controls

Steering System

Steering System - Power steering via engine driven hydraulic pump and manual helm pump located in machinery space. Controls from pilothouse and wing stations are via digital 'fly by wire' system. The main steering station in the pilothouse includes full follow-up helm wheel and non-follow up 'jog' lever. The wing stations are provided with non-follow-up levers only

Jog Levers - Non- follow up type

Digital helm

Rudders – Welded stainless steel construction

Bearings – Polymer material type upper and lower bearings in FRP (lower) and Aluminum (upper) carriers

All Orkot material Upper and Lower bearings

Seals – Dripless type - PYI, PSS type

Stabilizer System Description - Stabilization while underway is provided by a pair of fins located approximately amidship and powered hydraulically by an engine driven hydraulic pump. Control is by modern digital 'fly-by-wire' system located in the pilothouse

Fins – Hydrodynamic foil design with end plates; Naiad, Model 22 sq. ft. (4 fins)

Main Engines/Drive Line Description - Propulsion is provided by two modern, four stroke, and 16 cylinder diesel engines producing approximately 3650 HP each. They are connected to propellers via 5 ½" HS Stainless shafts and remote down angle gearbox. Primary exhaust is underwater at chine while a silenced bypass exits at transom corners. Seawater cooling water is supplied via dual 6" lugged type butterfly valves, bronze Y-strainers and molded FRP scoops with Stainless steel grates

Main engines - (2) 16 cylinder V-type, includes seawater pump, heat exchanger, dual starters and battery charging alternators

MTU/DDC 16V4000 M-90 WITH 3800 HOURS The next service, per the maintenance Echelon is at 4500 hours, which is to regular service and rebuild two turbo chargers. At 6000 hours it is recommended to change injectors and inspect combustion chambers. At 9000 hours, most

components and cylinder heads are recommended, maintenance echelon can be sent per request. This maintenance echelon is based on an average load of 70%. The potential Buyer should have MTU perform a Load Profile (customized maintenance echelon). "My Girl I" custom load profile available upon request.

Controls – electronic with throttle synchronizing and LCD data display

DDC/Sturdy throttles and EDM for each engine

Fuel Filters - DDC

Marine Gear – Remote mount, 8° down angle, ratio 2.96:1 with trailing pump. - ZF, Mod 7550A
Main Exhaust

- Stainless steel collector with hard thermal insulation, integral spray ring for 20" main underwater FRP exhaust piping and flanged connections
- Underwater Exhaust outlet
- Molded FRP 'blister' design with chine exit, includes head reducing molded hull ventilator

By-pass exhaust – 12" FRP piping

Silencer, Sound down

Propellers - 5 Blade Nibral cast, finished to 'S' class standards. - Michigan Wheel. CNC machined

Satellite Television / Camera System

Engine Room Aft Deck Main Port and Starboard

- Monitoring Station
- Panasonic 8-Position Passive Looping Switch
- Panasonic WVCU161 1 Channel System Controller
- Panasonic 4 Camera Color Quad
- Thermal Imager
- Night Vision FLIR Infrared Camera
- Intelisea Monitor

Internet Access

- Network – 802.11b wireless Ethernet network throughout vessel with 4 access point
- Linksys access point - Linksys Ethernet hub/router
- Weather Fax – HF chart broadcast receiver and thermal printer. - Furuno, mod. 210

Search Light – Carlisle & Finch / remote controlled **Signals and lights**

- Ship's Whistle
- Air powered horn with automated signal timer
- Kahlenberg, F-3 five trumpet with synch. Light Kahlenberg, M511-A signal timer
- Ship's bell - bronze mirror polished chrome finish on polished stainless steel hoop bracket
- Kahlenberg, 12"

Interior Design

Westport has employed the services of Donald Starkey Design, Ltd., located in London. Don, an accredited design stylist, brings many years of experience in exterior and interior design, and has received numerous awards for his creative vision

Woodwork Two primary types of wood are used in the guest areas throughout the yacht, Pommele Sapele and Mahogany, finished to deep reddish brown. It is straight-grained, with a fine, even texture

Pommele Sapele is a warm brown wood from West and East Africa. The grain is wavy and the texture is fairly fine, with a quilted appearance

Anigre, which is a medium amber color, and maple, which is a light tan color, in the crew quarters

Countertops

- Main salon buffet tops, upper deck vista bar top, Pommele Sapele panels, with solid Mahogany edge
- Dresser and nightstand tops Pommele Sapele panels, with solid Mahogany edge
- Head vanity tops to be lightweight stone
- Main galley - primarily stainless, with the Corian in pantry
- Crew galley - Corian

Window Treatments

- Flooring
- Carpeting
- Granite or marble primarily to be lightweight

Doors

- Interior doors 1 3/8" Pommele Sapele panels, or upholstered fabric panels
- THG hardware or equal with anti-rattle latches and privacy locks. Sealed to minimize noise transmission

Wardrobes

- Sheathed with aromatic cedar on walls, shelves

- Automatic light fixtures
- Stainless closet rod
- Shelf with keeper
- Hettich door hardware

Stairways

- Carpeted, with lights at stairs
- Handrails at each stairway

Joinery/Built-in Furniture Drawers, trim, dressers, nightstands, vanities, are all to be Pommele Sapele panels and may have Mahogany trim with urethane satin and gloss finish. Anigre and maple are used in the crew quarters

Mattresses - Innerspring, Beauty-Rest

Swim Platform

- Teak Decks
- Hose Bibs - For wash-downs
- Sockets - For swim ladder
- Hatch - Gasoline filling and service station
- Steps to Main Deck with handrails, port and starboard
- Tender Cleats - Aft, port and starboard
- Warping Capstans – (2) port and starboard
- Mooring Bitts - Two, port and starboard

Access Doors:

- To equipment room, starboard side
- To control room, port side
- To tender garage, via centerline hinge-up door
- Underwater Lights - Six
- Swim Ladder - Folding handle - Stainless steel
- Stainless Rails - Railings to be mirror polished stainless steel, 2" round top rails with 1 ½" round stanchions
- Swim step - 2" diameter

Engine Room

- Access from either water-tight door from equipment room or control room
- Work bench

Control Room Port side, accessed via swim platform watertight door, Pacific Coast Marine

engine room watertight door, or stairway down from behind the aft deck bar. Contains desk for engineer, electrical distribution, tool and spare parts storage, and head with sink

Equipment Room Starboard side, accessed via swim platform PCM watertight door, or the PCM engine room watertight door. Contains dive compressor and storage for dive equipment, garbage freezer

Boat Garage Centered between control room and equipment room, accessed via Pacific Coast Marine watertight door to equipment room, and hinge-up garage door aft to swim platform. Contains tender, sliding crane, storage for windsurfer, fishing rod holders, drying hooks for dive gear

Dive Equipment

The vessel is fitted with an area for dive support equipment including dive compressor, tank storage and suit storage. The area is to be located in the equipment room on the starboard side, aft of the engine room with direct access to the swim platform.

Dive compressor – Fixed unit capable of 5 cfm Brownies, Mod. YP55DF

- Tanks, 80 cubic feet, cylindrical, (6) Luxfer, Mod. 80
- Suit storage – hanging arrangements inside equipment room
- Hardware, Stainless
- Manifold – for simultaneous filling of 4 tanks
- Brownies, included in YP55DF
- High Pressure hose – for filling tanks while in tender across transom
- Brownies, included in YP55DF
- Snorkel – for fresh air feed to compressor, inlet on bridge deck

Tender & Shore Boats

14' RIB crew/rescue boat located on the sun deck, with an optional location on the foredeck. The crew boat will be launched and recovered with a davit. In addition to the davit on the foredeck there will be an identical unit on the sun deck for launching/recovering water toys.

- Crew/Rescue boat – 14' RIB with 4 stroke outboard motor
- Nautica, Mod. RIB14 Venture
- Tender/Crew boat chocks – welded aluminum, white powder coat finish
- Tender/Crew boat lifting bridle – custom fit web, 4-point design with stainless steel hardware

Remarks

"My Girl I" offers six staterooms with VIP on bridge deck with a private balcony; she has maximized every space of the vessel, but keeping her at 49.9 meters. She offers large area spaces with comfort, shallow draft, great speeds, efficiency and relative low maintenance. She has low hours and has been maintained by her original owner and no expense has been spared to maintain her in a world-class manner.

The Westport 50 Meter is a truly well thought-out vessel, which with collaborative information and design from previous Westport owners and the Westport design team, they were able to build the largest vessel possible at 50 Meters and right under 500 tons.

Exclusions

- *All wall art is excluded from the sale of this vessel*
- *(2) Orange vases in Dining Salon*
- *A detailed list of exclusions will be provided at the time of sale, upon written request*
- **"My Girl I"** is a registered name and does not convey

Exclusions

Owner's personal belongings.

Disclaimer

The Company offers the details of this vessel or yacht in good faith but cannot guarantee or warrant the accuracy of this information nor warrant the condition of the vessel. A buyer should instruct his representatives, agents, or his surveyors, to investigate such details as the buyer desires validated. This vessel or yacht is offered subject to prior sale, price change, or withdrawal without notice.

PHOTOS

Aft Deck



Salon



Salon



Salon



Salon



Dining



Dining



Main Foyer



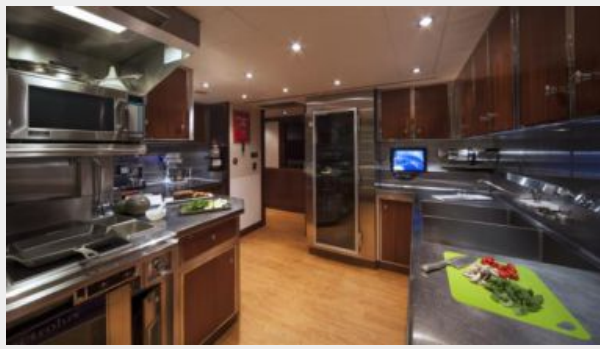
Main Foyer



Galley



Galley



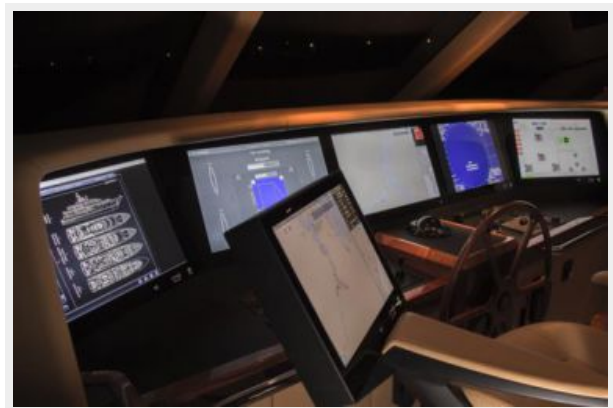
Galley



Pilothouse



Pilothouse



Master / Office & Lounge



Master / Office & Lounge



Master Stateroom



Master Stateroom



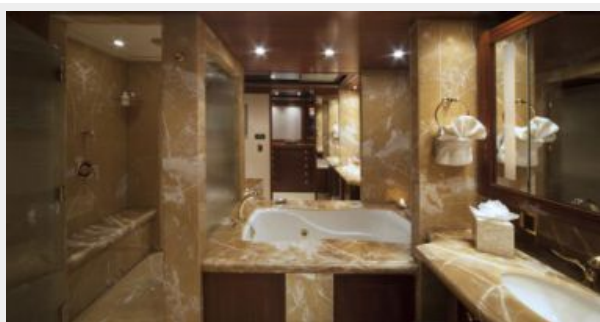
Master Stateroom



Master Stateroom



Master Head



Master Head



Guest Stateroom / Starboard



Guest Stateroom / Starboard



Guest Head



Guest Stateroom / Port



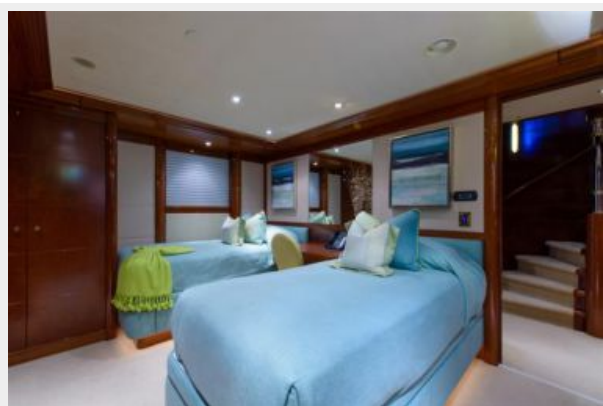
Guest Stateroom / Port



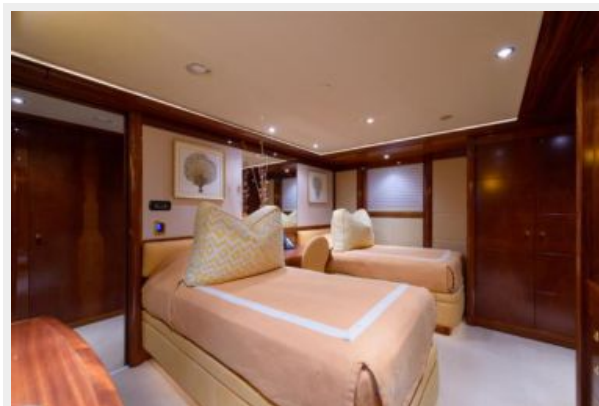
Twin Guest Stateroom / Port



Twin Guest Stateroom / Port



Twin Guest Stateroom / Starboard



Twin Guest Stateroom / Starboard



VIP Stateroom / Bridge Deck



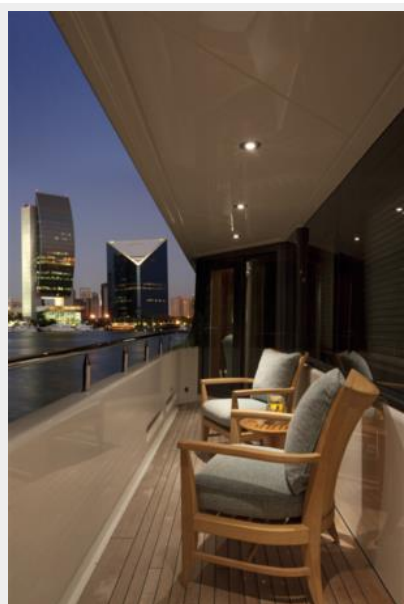
VIP Sitting Area



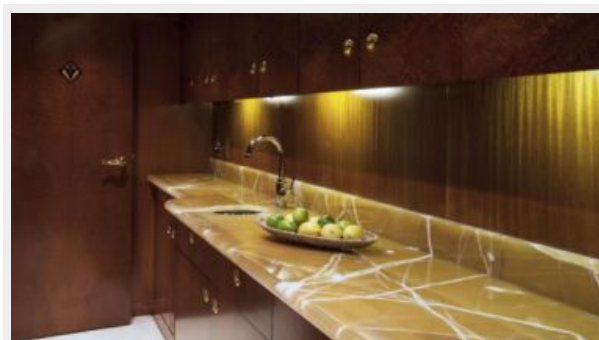
VIP Head / Bridge Deck



Balcony



Upper Deck / Service Area



Skylounge



Skylounge

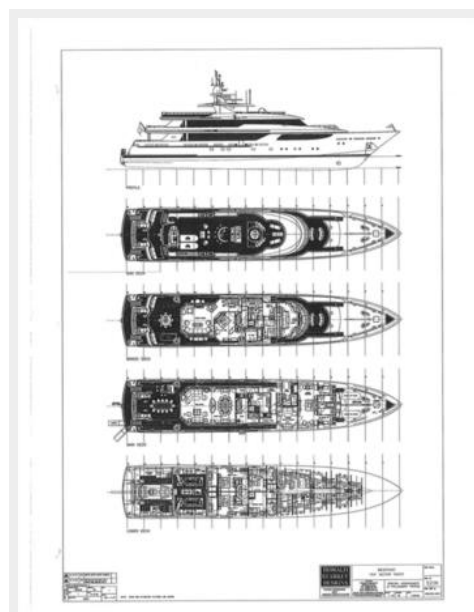


Bridge Deck



Sun Deck



Sun Deck**Sun Deck****Sun Deck****Sun Deck****General Arrangement**

CONTACTS

Andrey Shestakov, leading yacht broker of the sales department of Shestakov Yacht Sales Inc. Shestakov Yacht Sales Inc., the official representative of the Miami/Fort Lauderdale FL headquarters.

Contact details

Email: **andrey@shestakovyachtsales.com**

Web: shestakovyachtsales.com/en/

Telephones

USA: **+1(954)274-4435**

Office hours

Monday – Saturday: **9:00 - 21:00 EDT**

Sunday: **closed**

Address



Harbour Towne Marina, 850 NE 3rd St,
STE 213, Dania, FL 33004