

UNO MAS — VIKING



Судостроитель: VIKING

Год постройки: 2015

Модель: Катер для спортивной рыбалки

Цена: ЦЕНА ЯХТЫ ПО ЗАПРОСУ

Местонахождение: United States

Длина общая: 62' 0" (18.90m)

Ширина: 18' 11" (5.77m)

Макс. осадка: 5' 1" (1.55m)

Крейс. скорость: 37 Kts. (43 MPH)

Макс. скорость: 41 Kts. (47 MPH)

Купить **Uno Mas — VIKING** а также выбрать подходящую вам яхту из нашего каталога яхт вам поможет опытный яхтенный брокер Андрей Шестаков. На сегодняшний день компания **Shestakov Yacht Sales Inc.** имеет большое количество яхт в собственном списке продаж, а также тесно сотрудничает со всеми крупными яхтенными производителями по всему миру.

Для того чтобы купить яхту **Uno Mas — VIKING** а также проконсультироваться по любому вопросу связанному с покупкой, продажей, чартером яхт позвоните по телефону **+7(918)465-66-44**.

ОГЛАВЛЕНИЕ

ОГЛАВЛЕНИЕ	2
ХАРАКТЕРИСТИКИ	6
Обзор	6
Основная информация	6
Размеры	6
Скорость, вместимость и масса	6
Размещение	7
Корпус и палуба	7
Информация о двигателе	7
ПОДРОБНОЕ ОПИСАНИЕ	8
Décor	8
Salon	8
Galley	8
Dinette	9
Companionway	9
Master Stateroom	9
Master Head	9
Forward Stateroom	9
Forward Stateroom Head	10
Port Stateroom	10
Port Stateroom Head	10
Port Aft Stateroom	10
Flybridge	10
Electronics	11
Palm Beach Tower	16
Mechanical and Engine Room	17
Cockpit	17
Deck and Exterior	18

Исключения	18
Отказ от ответственности	18
ФОТОГРАФИИ	20
Salon	20
Salon/Galley	20
Salon/Galley	20
Salon/Galley	20
Galley	20
Master Stateroom	20
Master Head	21
VIP Stateroom	21
VIP Stateroom	21
Guest Head	21
Guest Stateroom	21
Helm	21
Helm	21
Helm	21
Flybridge Seating	22
Flybridge Seating	22
Flybridge Seating	22
Tower	22
Tower	22
Tower	22
Port	22
Starboard	22
Deck	23
Deck	23
Deck	23
Bow	23

Bow	23
Radar	23
Tower	23
Tower	23
Mezzanine Seating	24
Cockpit	24
Fighting Chair	24
Fighting Chair	24
Cockpit	24
Tower	24
Tower	24
Engine Room	24
Engine Room	25
Engine Room	25
Engine Room	25
Engine Room	25
Engine Room	25
Engine Room	25
Engine Room	25
Engine Room	25
Starboard Profile Running	25
Starboard Profile Running	26
Aft Profile	26
Aft Profile	26
Profile	26
Starboard Profile	26
Bow	26
Profile	26
Profile	26
Running	27

Aft Profile	27
Aft Profile	27
Aft Profile	27
Overhead	27
Overhead	27
КОНТАКТЫ	28
Контактная информация	28
Телефоны	28
Время работы	28
Адрес	28

ХАРАКТЕРИСТИКИ

Обзор

Available now without the year long wait. Uno Mas, a beautiful example of a 62 Viking custom tournament equipped sport fishing machine. A collaboration between a very knowledgeable multiple boat owner and Viking Yachts. Delivered new in March of 2015. CAT Platinum Extended Service and Passport Extended Service Plans (see broker for details).

The best of electronics, teak cockpit, Release Marine bridge and fighting chairs, custom Palm Beach Tower, CAT 360 system, two huge TVs in the Salon, Sea Keeper gyro stabilizer, extra fuel and a drop dead gorgeous Stars and Stripes blue custom paint job. This is one of the best looking Vikings ever built!

Основная информация

Тип судна: Катер для спортивной рыбалки

Подкатегория: Convertible

Модельный год: 2015

Год постройки: 2015

Страна: United States

Размеры

Длина общая: 62' 0" (18.90m)

Ширина: 18' 11" (5.77m)

Макс. осадка: 5' 1" (1.55m)

Скорость, вместимость и масса

Крейс. скорость: 37 Kts. (43 MPH)

Макс. скорость: 41 Kts. (47 MPH)

Водоизмещение: 92175 Pounds

Вместимость воды: 302 Gallons

Вместимость сточного бака: 152 Gallons **Объем топливного бака:** 2150 Gallons

Размещение

Всего кают: 4

Всего ком. состава: 3

Корпус и палуба

Материал корпуса: Fiberglass

Информация о двигателе

Двигатели: 2

Производитель: CAT

Модель: C32A

Тип двигателя: Inboard

Тип топлива: Diesel

ПОДРОБНОЕ ОПИСАНИЕ

Décor

- Prestige Décor
- Gloss Finish Throughout
- Custom Wallpaper
- Wrapped Hatch Carpet Installation
- Salon Door Type Catches on Stateroom Doors
- Appliqued Bedspread and Shams in Master Stateroom
- Brushed Nickel Hardware Throughout
- Brushed Nickel Coverplates for Switches and Receptacles throughout
- Satin Nickel Interior Light Trim Throughout
- LED Interior lights throughout
- (2) Barstools without backs in Ultra-Leather Brisa Birch
- Interior Door Style and Rails in Random Teak

Salon

- Cocktail Table
- Upgraded Dewberry Sofa
- Bose V35 Entertainment System with Blu-Ray
- Salon Door with Electric Door Opener
- Dimmers for Lights
- Teak Wire Box
- Teak Valances
- Teak Strips in Headliner
- (2) 46" Samsung Flat Panel TVs
- Teak Trim where Carpet Meets Amtico Flooring
- Custom Amtico Flooring at Salon Entrance
- Custom Switches for Fighting Chair lights Tri-Color
- Full Canvas Carpet Runner
- Custom Teak Crown Molding

Galley

- (4) Sub-Zero Undercounter Refrigerators and Freezers
- Custom Countertop in Ceasarstone with Bullnose
- 110v Outlet Next to switch on Bottom of Upper Cabinet above Sink
- Undermounted Stainless Steel Sink with Satin Nickel Faucet
- Custom Amtico Flooring

- Mirror Backsplash
- Trash Compactor
- Custom Teak Crown Molding

Dinette

- Mappa Burl Dinette Table with Teak Pedestal
- Dimmer on Overhead LED Lights
- AC Receptacle Under Dinette Table
- Custom Teak Crown Molding

Companionway

- Full Canvas Carpet Runner with Step Covers
- Custom Teak Toe Kick at Companionway Steps
- Vertical Teak Strips Between wall Panels
- Ariston Washer and Dryer

Master Stateroom

- Teak End Table Tops
- 32" Flat Panel TV
- Blu-Ray Player
- Custom Teak Crown Molding
- Full Length Mirror on Back of Stateroom Door

Master Head

- Custom Ceasarstone Vanity Wild Rice with Bullnose
- Teak Face on lower Vanity
- Custom Amtico Flooring
- Mirror around upper Vanity insert
- Satin Nickel Faucet and Shower Fixtures
- Brushed Nickel Towel Bars and Rings
- Exhaust Fan in shower

Forward Stateroom

- 19" Flat Panel TV

- Blu-Ray Player
- Upgraded Mattress

Forward Stateroom Head

- Custom Ceasarstone Vanity Wild Rice with Bullnose
- Teak Face on Lower Vanity
- Mirror Around Upper Vanity Insert
- Custom Amtico Flooring
- Satin Nickel Faucet and Shower Fixtures
- Brushed Nickel Towel Bars and Rings
- Exhaust Fan in shower
- Custom One Piece Frameless Shower Door

Port Stateroom

- Upgraded Mattress
- Dimmer on LED Lights

Port Stateroom Head

- Custom Ceasarstone Vanity Wild Rice with Bullnose
- Teak Face on lower Vanity
- Custom Amtico Flooring
- Chrome Shower Door
- Satin Nickel Faucet and Shower Fixtures
- Brushed Nickel Towel Bars and Rings
- Exhaust Fan in shower

Port Aft Stateroom

- Twin Berths
- Upgraded Matress
- Samsung Flat Panel TV

Flybridge

- Teak Release Marine Helm Pod
- Bridge Cushions in Ultraleather Buckskin

- Electric Trolling Valves
- Push button Catches for Electronics Boxes
- Recessed Electronics Boxes
- Removable Flybridge Jumpseat Backrest
- Bridge without Exposed Fasteners
- Refrigerated Bridge Drinkbox
- Bridge Freezer Box
- Freshwater Outlet
- Handrail on Side of Helm Console Above Helm Access Door
- Single Level Control Handles w/Bowthruster Button in Handles
- Custom Placement of Compass inside Electronics Box
- Custom Clam Shell Lifts of Electronics Box
- Stainless Steel Gas Springs on Bench Seats
- Dedicated Freshwater feed for Tower
- Custom Split Radio Box Lids

Electronics

RADAR

- 1 FURUNO NAVNET 3D DRS25A 25KW 96NM RADAR LESS ARRAY
- 1 FURUNO-XN13A/6 - 6' RADAR ARRAY
- 1 FURUNO NAVNET 3D MFDDBB PROCESSOR
- 1 FURUNO GP330B GPS ANTENNA
- 2 KEP 17" LED GLASS BRIDGE MARINE MONITOR
- 3 ATLONA AT-DVI15SRS DVI EXTENDER VIEW NN3D ON SALON POP-UP TV
- 1 3M HDMI-DVI CABLE ADAPTER VIEW NN3D ON SALON POP-UP TV
- 1 EXTRON 4 PORT DVI DISTRIBUTION AMP

PLOTTER

- 1 GARMIN GPSMAP8208 - 8" TS MFD PRELOADED WITH COASTALS CHARTS
 - MOUNT IN DROP DOWN BOX
 - VIEW ON HELM DISPLAYS & DINETTE TV
- 1 GARMIN REMOTE INPUT DEVICE - GRID LOCATE IN PORT RADIO BOX
- 1 GARMIN GXM52 WEATHER ANTENNA
- 2 GARMIN 40' NETWORK CABLE
- 1 GARMIN GMS10 NETWORK EXPANDER
- 1 GARMIN GNT 10 N2K TRANSCEIVER
- 1 GARMIN WIFI ADAPTER FOR BLUECHART MOBILE
- 2 ATLONA AT-DVI15SRS DVI EXTENDER
- 1 ATLONA AT14050 HDMI M TO DVI F ADAPTER

- 1 EXTRON 4 PORT DVI DISTRIBUTION AMP VIEW 8208 ON HELM DISPLAYS & DINETTE TV

NAVNET PERIPHERALS

- 1 FURUNO FA50 12/24VDC AIS BLACK BOX
- 1 SHAKESPEARE PHASEIII 6396 4' AIS ANTENNA
- 1 FURUNO NAVNET 3D HUB101
- 4 FURUNO 5M RJ45 LAN CABLE

NETWORK

- 8 MARETRON CM MICRO TEE MALE/FEMALE/FEMALE
- 5 MARETRON N2K MID DBLE-ENDED CRDST 2M GRY
- 3 MARETRON N2K MID DBLE-ENDED CRDST 3M GRY
- 2 MARETRON N2K MICRO TERMINATION RESISTOR MALE
- 1 MARETRON MICRO BULKHEAD FEED THRU MHF-CM
- 40 MARETRON DG1 N2K MID BULK CABLE GRAY
- 5 MARETRON FA-CF-ST FEMALE NMEA CONNECTOR
- 5 MARETRON FA-CM-ST MALE NMEA CONNECTOR
- 1 PULS DC/DC 96W 18-32VDC IN VDC CONVERTER
- 1 MICRO/MID POWERTAP TEE W/5M DROP

SOUNDER

- 1 FURUNO FCV1200BB SOUNDER

-W/LANDSCAPE CONTROL

- 1 FURUNO CA50BL-12HR 2KW 50KHZ TRANSDUCER
- 1 FURUNO CA200B-8B 2KW 200KHZ TRANSDUCER
- 1 KEP 17" LED GLASS BRIDGE MARINE MONITOR
- 1 ATEN VS94A 4 PORT VGA SPLITTER

-VIEW SOUNDER ON HELM DISPLAYS

SOUNDER 2

- 1 GARMIN GSD-26 SOUNDER
- 1 AIRMAR PM275LHW 1KW TRANSDUCER 42kHz-65kHz/150kHz-250kHz-WIDE BEAM

DIGITAL DEPTH/TEMP

- FURUNO RD33 DATA ORGANIZER & DISPLAY INC
- FURUNO 235DHTLMSE HI-PRECTMP2 TRANSDUCER INC

AUTOPILOT

- 1 GARMIN GHP12 W/GHC20 AUTOPILOT
- 1 GARMIN AP SHADOW DRIVE SENSOR
- 1 GARMIN RRU GRF10 SENSOR
- 1 GARMIN GRF10 15M EXTENSION CABLE
- 1 GARMIN GHP12/20 CCU 15M EXTENSION CABLE
- 1 GARMIN 24" ACTUATOR POWER CABLE
- 1 GARMIN AUTOPILOT INSTALLATION KIT

VHF

- 1 ICOM IC-M604 BLACK VHF RADIO
- 2 ICOM MB75 VHF FLUSH MOUNT F/502,602,802
- 2 SHAKESPEARE PHASE III 6018 18' VHF ANTENNA
- 2 AME TOWER/HARDTOP RUPP MOUNT PAK
- 2 3/4" ANTENNA STANDOFF PIPE
- 2 POLY-PLANAR EXTERNAL (BLK) VHF SPEAKER

-MOUNT IN OVERHEAD TEASER REEL BOX

STEREO

- 1 FUSION MS-IP700i STEREO
- 1 FUSION MS-IP700i DROP CABLE
- 1 FUSION MS-ACSXV-ONLY SIRIUS/XM TUNER
- 1 SHAKESPEARE-SRA-40 SIRIUS ANTENNA
- 1 FUSION BLUETOOTH DONGLE BT100

-AUDIO CONTROL ONLY NO DATA

- 1 JL AUDIO MHD600/4 4-CHAN AMPLIFIER
- 2 JL AUDIO 7.7" WHITE COAXIAL SPEAKERS BRIDGE FWD AND AFT

SATCOM

- 1 KVH TRACPHONE V3-IP WHITE BASE W/ICM
- 1 KVH TAPERED V3 ANTENNA MOUNT
- 1 ROGUE PRO WIFI CONVERTER/BRIDGE
- 1 PANASONIC 2-LINE CORDLESS PHONE

-MODEL: KXTG9381T

- 1 APC BE650G UPS
- 1 NETGEAR WNDR4500 N900
- 1 SIERRA WIRELESS GX440 AT&T CELLULAR DATA MODEM FOR WIRELESS NETWORK REQUIRES CUSTOMER SUPPLIED SIM CARD
- 2 SIERRA WIRELESS GX440 ANTENNA QTY 2 REQUIRED/INSTALLATION
- 1 PC SWITCH RJ45 4 TO 1 APC 1399

PC

- 1 BOATRANET APPLICATION SERVER
- 1 MARINCO USB-A6 PC USB OUTLET

CAMERA

- 4 GOST PM-MINI IR BALL CAMERA
 - ENGINE ROOM FWD LOOKING AFT
 - 1-PORT, 1-CENTER,1-STBD,1-SEAKEEPER
- 1 3V DUAL COMP VID AMP 2 IN 3 OUT AMP MDA
 - VIEW E.R CAMERAS ON HELM DISPLAYS
- 1 COLOR QUAD CAMERA SWITCH
- 1 FUSE BLOCK ATO/ATC 6 GANG BLUE SEAS 5025

THERMAL IMAGING

- 1 FLIR M324L THERM/LOW LIGHTCAMERA
- 1 FLIR POWER OVER ETHERNET INJECTOR
- 1 4 PORT DIN RAIL MOUNT ETHERNET SWITCH
- 1 EXTRON 5V COMPOSITE VIDEO DIST AMP MDA 1 X 5 WITH INPUT LOOP THRU VIS/IR TO HELM DISPLAYS,SALON TV & DINETTE TV
- 1 GOST WATCH GWHD-A/D GATEWAY
 - TO VIEW FLIR VIA GOST WATCH NETWORK
- 1 CHANNELPLUS 5525 2 CHANNEL MODULATOR
- 1 AME FLIR M-SERIES HARDTOP MOUNT
- 1 EXTRON VIDEO DIST AMP MDA 1X5 COMPOSITE VIDEO VIEW IR ONLY CAMERA ON HELM DISPLAYS
- 1 4 PORT DIN RAIL MOUNT ETHERNET SWITCH
- 1 GARMIN NETWORK POE ISOLATION COUPLER
- 1 FUSE BLOCK ATO/ATC 6 GANG BLUE SEAS 5025

SPOTLIGHT

- 1 ACR RCL100 24V SPOTLIGHT MOUNT ON STANDING PLATFORM

SAT TV

- 1 KVH TRACVISION HD7 SATTV W/TRIAMERICAS LNB
- 1 KVH DIRECTTV HR24 HD/DVR DSS RECEIVER

-SALON

- 4 KVH DIRECTV H25 HD DSS RECEIVER
- -MASTER & FORWARD STATEROOM
- 4 KVH H25 DTV RECEIVER RF REMOTE
- 1 COMPONENT VIDEO TO SVIDEO/COMP CONVERTER

-VIEW SALON DSS ON HELM DISPLAY

- 1 APC BE650G UPS

SALON

- 1 URC MRX-10 MASTER CONTROLLER
- 1 URC APPLE IOS TOTAL CONTROL APP
- 1 URC WI-FI REMOTE CONTROL TRC-1080
- 1 URC RMK-1 1U RACK MOUNTING KIT RMK-1
- 1 URC RS232 CABLE W/MALE DB9 FOR MSC400
- 1 DIRECTV DCA2PR0 CINEMA CONNECTION KIT II
- 1 APPLE TV DIGITAL MULTIMEDIA RECEIVER
- 1 FUSION BLUETOOTH DONGLE BT100 VIA AUX RCA; NO ONSCREEN DATA ON RADIO

TOWER

- 1 GARMIN GPSMAP8208 - 8" TS MFD PRELOADED WITH COASTALS CHARTS
- 1 GARMIN 40' NETWORK CABLE
- 1 ICOM HM-162 B BLACK VHF COMMAND MIC
- 2 ICOM OPC-1541 VHF COMMAND MIC EXTENSION
- 1 FUSION MS-NRX200i WIRED REMOTE
- 1 JL AUDIO M650-CCX-W STEREO SPEAKER

COCKPIT

- 1 FUSION MS-NRX200i WIRED REMOTE

1- COCKPIT @ MEZZANINE SEATS

- 1 JL AUDIO MHD600/4 4-CHAN AMPLIFIER
- 1 JL AUDIO 7.7" WHITE COAXIAL SPEAKERS M770-CCX-CG COCKPIT HAUNCHES
- 1 JL AUDIO 7.7" M770-TCS-W SPEAKERS MOUNT IN CUSTOM BOXES UNDER GUNWALE RELOCATE VIKING INSTALLED COCKPIT SPEAKERS TO ENGINE ROOM
- 1 LUMISHORE TIX801-CCP-FF-2 COLOR CHANGE TWO FF UWL LIGHTS W/ E.O.S CONTROLLER 2 LIGHTS OUT TRANSOM
- 2 LUMISHORE TIX801-CCP-FF COLOR CHANGE SINGLE FF UNDERWATER LIGHT
- 4 LUMISHORE 5M DMX EXTENSION CABLE
- 1 ENTTEC ODE MODULE 70305 LESS POWER SUPPLY 500738

- 1 TECHNEC 5-PIN XLR MALE TO RJ45 ADAPTER
- 1 GARMIN G2 VISION US513L CHART JACKSONVILLE - BAHAMAS
- 1 NAVNET3D- MM3-908-SAT CHART BAHAMAS HIGH RES
- 1 GARMIN S. BAHAMAS US029R CHART
- 1 CARBON FIBER ON HELM PANEL AND DD BOX

Palm Beach Tower

- Tuna Tower w/molded top 8' gap, brushed pipe (2) Antenna, Stands-offs, No Halyards, 3 Sided Track on Bimini rail
- (6) Hardtop lights Lumitec Mirage tri-color w/fiberglass recess; red, white, blue
- Radar pod large oval style, w/sliding door for teaser reels
- Molded standing platform w/coupler box on platform
- Molded 3-in-1 24V-LED light pod w/Stainless steel Bezel
- Molded 24V-LED light forward platform stainless steel Bezel
- Control box 63" w/flush mounted compass
- (2) Recessed electronics box with lid
- Control box cover
- Painted top of control box satin black
- Tower Sunshade molded w/internal tracks, 5 welded antenna mounts Painted tower Sunshade frame in Satin Black
- Antenna mount SAT V3 dome hardtop fiberglass molded Into radar pod
- Bridge rail, leg-to-leg, double aft to outer main leg
- (8) Rod holders polished to weld to rail PBT Style
- (6) Rod holder polished aft legs PBT Style
- Controls & steering CAT controls top mount for 360 system U-shaped safety rail around ladder opening
- 43' outrigger Rupp Outriggers, HD 3 spreader, bridge release
- large solid aft bar Installed
- Rigger locks
- Rupp rollers Installed on outriggers
- (4) Teaser line collars
- Outrigger Rupp
- Center Rigger Rupp
- (2) Recessed electric teaser reels MIYA EPOCH U59 HD 24V
- Washed Down water in Tower
- Flag Staff Aft
- Electronics Box Electric Fold down
- Bench Seat with Backrest
- Enclosure 3-sided track-to-track to edge jump seat backrest, EZ2CY 3 Air Vents forward top panels
- Powder coated aluminum flangeless track
- (3) spreader lights, teaser reels, masthead lights, anchor light under control box, bond

tower, (6) tri-color hardtop lights

- Welded flagstaff on each side platform perimeter rail
- (2) Rupp outrigger stainless steel grommets mounted In cockpit gunnels
- (2) Lumitec Mirage tri-color LED lights w/fiberglass recess in sunshade top red, white and blue
- (2) Lumitec Mirage tri-color LED lights underneath sunshade
- (2) Lumitec Mirage tri-color LED lights underneath platform
- (2) Welded teaser line grommets with Inserts
- (2) Stainless steel teaser line thru fittings underside of hardtop
- (2) Lumitec Mirage tri-color LED lights under platform w/fiberglass recess red, white and blue
- Upgraded tower FWD X brace, side diagonals, and hardtop brace to contour style
- Fabricated fiberglass parts platform, control box, sunshade using carbon fiber material

Mechanical and Engine Room

- Twin CAT C32A 1925 MHP with CAT 360
- Seakeeper Gyro Stabilizer
- 1400 GPD Watermaker with Auto Backflush
- Custom AWLGRIP Tiller arms & All Brass in Lazarette
- Back-Up Fuel Transfer Pump in Parallel
- Two Tool Boxes Painted in White
- Dual Power Steering Pumps
- Custom CAT 360 Control & Bow Thruster System
- Plumb Dockside Water Through Watermaker
- Fiberglass Tank Vents
- Generator Gas-Water Seperator
- Awlgrip Brass Thru-Hulls and Sea Strainers in Engine Room and Forward Bilges
- Fuel Filters in Snow White
- Line run from Oil Change System to Cockpit Dockside Box
- 110V Outlet on Aft Bulkhead at Entranceway
- Clear Acrylic Shaft Log Access Covers
- Additional 21.5 KW Generator total of (2)
- Tee in Dockside Water Mainfold to fill Water Take From Cockpit

Cockpit

- Teak Cockpit, Mezzanine, Coaming and Cover Boards
- Crushed Ice Machine with Discharge in Starboard Mezanine Box
- Refrigerated Cockpit Step Box
- Refrigerated Port Mezzanine Undermounted Box
- Refrigerated Starboard Mezzanine Undermounted Box

- Cruisair “Cool Breeze” Mezzanine Air System
- Live Well in Sole
- Transom Coaming with Gate and Transom Fish Box
- Transom Swim Steps
- Awlgrip Lazarette
- Y-Valve for Fresh and Saltwater Washdown in Cockpit
- Freezer Storage in Mezzanine Seat
- Storage Lockers Under Port and Starboard Coamings
- Second Cablemaster in Cockpit
- Split Lid for Cockpit Fish Box
- TRI-Color Lights in Aft Deck Overhang
- TRI-Color Rope Lights Under Coaming
- Seawater Supply and Manifold for 8 Removable Tuna Tubes in Transom Fishbox
- Release Teak Fighting Chair with Lights
- Cockpit Cover

Deck and Exterior

- Salon Forward Window Mask
- Lewmar V4 Stainless Steel Windlass (Gypsy and Drum)
- Deleted Bow Pulpit with Cleats Fore and Aft
- Recessed Trim Tab Covers
- Fresh Water Washdown at Bow Inside Anchor Locker
- Custom LED Lights in Anchor Locker
- Stainless Steel Gas Springs for Anchor Locker Hatch
- Side Mounted Handrails That Follow top of Salon Window
- Sliding Fender Track Under Rub Rail
- Oval Exhaust Outlets
- Fiberglass Side Thru-Hulls
- Additional Fuel Tank forward for a total of (3)
- Custom Hull Color Gelcoat Stars and Stripes Blue
- Awkgrip Forward Bilge
- Magnetic Switches for all Bilge Lights

Исключения

При продаже яхты исключаются личные вещи владельца.

Отказ от ответственности

Компания предоставляет описание судна или яхты добросовестно, но не может гарантировать точность этой информации, а также не ручается за техническое

состояние. Покупатель должен проинструктировать своих агентов или оценщиков исследовать представленную информацию более подробно, по собственному желанию. Продажа судна или яхты, изменение цены или снятие с продажи будет происходить без предварительного уведомления.

ФОТОГРАФИИ

Salon



Salon/Galley



Salon/Galley



Salon/Galley



Galley



Master Stateroom



Master Head



VIP Stateroom



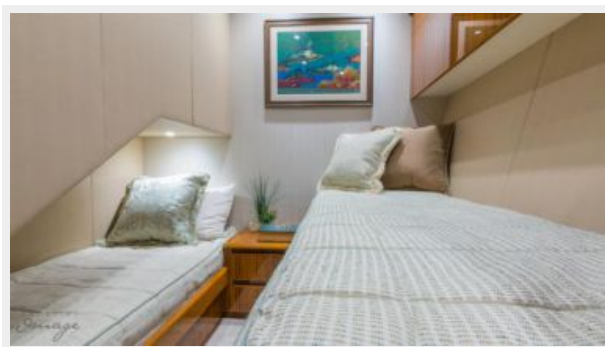
VIP Stateroom



Guest Head



Guest Stateroom



Helm



Helm



Helm



Flybridge Seating



Flybridge Seating



Flybridge Seating



Tower



Tower



Tower



Port



Starboard



Deck



Deck



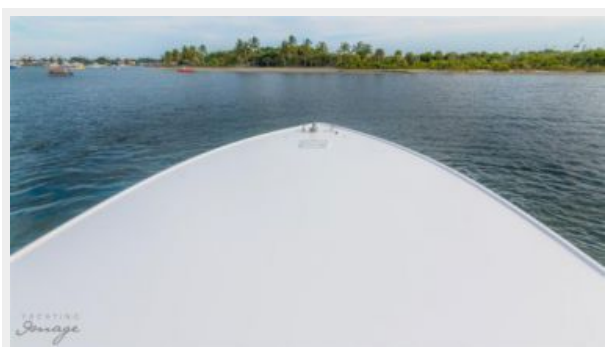
Deck



Bow



Bow



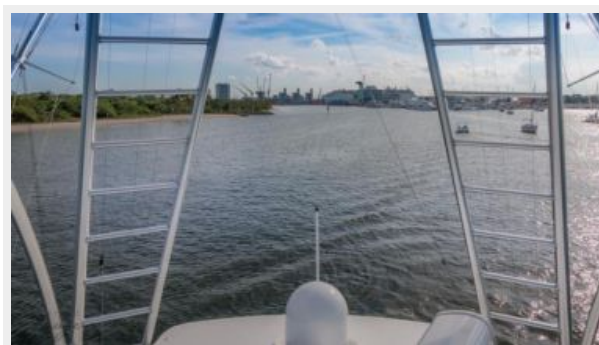
Radar



Tower



Tower



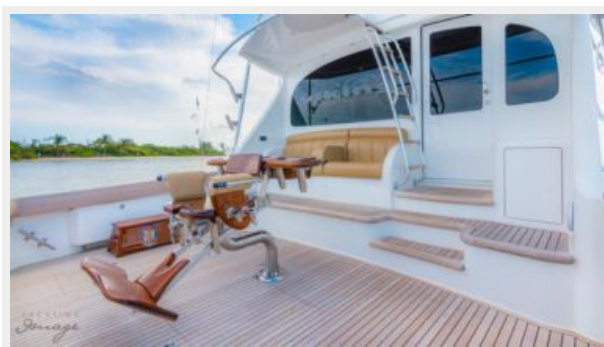
Mezzanine Seating



Cockpit



Fighting Chair



Fighting Chair



Cockpit



Tower



Tower



Engine Room



Engine Room



Engine Room



Engine Room



Engine Room



Engine Room



Engine Room



Engine Room



Starboard Profile Running



Starboard Profile Running



Aft Profile



Aft Profile



Profile



Starboard Profile



Bow



Profile



Profile



Running



Aft Profile



Aft Profile



Aft Profile



Overhead



Overhead



КОНТАКТЫ

Андрей Шестаков (Andrey Shestakov) – ведущий яхтенный брокер отдела продаж яхт и судов компании Shestakov Yacht Sales Inc. Официальный представитель Shestakov Yacht Sales Inc. для русскоговорящих клиентов в центральном офисе компании в Майами/Форт Лодердейл/Флорида/США.

Контактная информация

Email: andrey@shestakovyachtsales.com

Web: shestakovyachtsales.com

Телефоны

Краснодарский край: **+7(918)465-66-44**

США, Майами, Флорида: **+1(954)274-4435**

Время работы

Понедельник – Суббота: **9:00 - 21:00**
EDT

Воскресенье: **Закрито**

Адрес



Harbour Towne Marina, 850 NE 3rd St,
STE 213, Dania, FL 33004