

HURU — BRUCKMANN YACHTS



Builder: [Bruckmann Yachts](#)

Year Built: 2000

Model: Cruising Sailboat

Price: PRICE ON APPLICATION

Location: United States

LOA: 47' 0" (14.33m)

Beam: 13' 3" (4.04m)

Min Draft: 6' 0" (1.83m)

Max Draft: 6' 0" (1.83m)

Our experienced yacht broker, Andrey Shestakov, will help you choose and buy a yacht that best suits your needs HURU — Bruckmann Yachts from our catalogue. Presently, at Shestakov Yacht Sales Inc., we have a wide variety of yachts available on our sale's list. We also work in close contact with all the big yacht manufacturers from all over the world.

If you would like to buy a yacht HURU — Bruckmann Yachts or would like help answering any questions concerning purchasing, selling or chartering a yacht, please call +1(954)274-4435

TABLE OF CONTENTS

TABLE OF CONTENTS	2
SPECIFICATIONS	5
Overview	5
Basic Information	5
Dimensions	6
Speed, Capacities and Weight	6
Accommodations	6
Hull and Deck Information	6
Engine Information	6
DETAILED INFORMATION	7
INTRODUCTION	7
ACCOMMODATIONS	7
HULL and DECK	8
MECHANICAL	8
PLUMBING	8
RIGGING and WINCHES	9
SAILS	9
ELECTRICAL SYSTEM	10
ELECTRONICS	10
ADDITIONAL EQUIPMENT	10
EXCLUSIONS	11
Exclusions	11
Disclaimer	11
PHOTOS	12
Sailing	12
Main Salon Looking Forward	12
Main Salon	12
Main Salon Stbd. Side	12

Port Side Settee	13
Main Salon Looking Aft	13
Fwd. Cabin	13
Cedar-Lined Locker	13
Wine Locker	14
Fwd. Head	14
Aft Cabin	14
Aft Cabin Entrance	14
Galley	15
Galley	15
Aft Head Vanity	15
Aft Head and Shower	15
Storage Under Companionway	16
Spinnaker	16
Headsail Furler	16
Deck	16
Deck	17
Cockpit	17
Indoor Storage	17
Indoor Storage	17
Bow Thruster	17
Keel	17
Spade Rudder	18
Profile	18
Line Drawings	18
CONTACTS	19
Contact details	19
Telephones	19
Office hours	19

Address

19

SPECIFICATIONS

Overview

HURU was designed by Mark Ellis and launched by the renowned Bruckmann Yachts in Canada in 2000. She is a wonderful collaboration of one of the best designers and builders and was conceived by a very knowledgeable yachtsman. Although a modern boat in construction and systems, HURU has a classic appeal, with handsome lines and a spacious two-cabin, two-head Herreshoff-style interior below. On deck, HURU has a sweeping sheer, a low trunk cabin, a traditional transom and varnished mahogany cap rails over her bulwarks. Her hull deck joint is glass, not molded. Below the waterline, Ellis designed a modern underbody, with a 6' fin keel and spade rudder for maximum efficiency and speed. HURU has only had two owners, each highly experienced yachtsman who have lavished her with the best care possible. She has been sailed lightly during the summer months and stored indoors during the winter. With her hydraulic furling headsail, hydraulic main halyard and genoa winches, bow thruster and all lines leading back to the cockpit, she is easily sailed by one. She is in pristine condition (even for her young age) and priced to sell; she will not disappoint even the most discriminating yachtsman.

As noted in *Yachting Magazine's* article on HURU (formerly *ALIZÉ III*), "The clients wanted an uncluttered vintage look that maintained a sense of space and elegance, but they refused to tolerate any fussy or contrived elements. As you would expect of a modern sailing couple, they wished for all the amenities that make cruising comfortable, but they didn't want to crowd the boat. Nor did they want to hurt her performance. They wanted everything in moderation and good taste.

That's exactly what they got."

[Click here to view the entire article:](#)

Basic Information

Category: Cruising Sailboat

Sub Category: Sloop

Model Year: 2000

Year Built: 2000

Country: United States

Coast Guard #: 1231418

Vessel Top: Dodger

Dimensions

LOA: 47' 0" (14.33m)

LWL: 35' 7" (10.85m)

Beam: 13' 3" (4.04m)

Min Draft: 6' 0" (1.83m)

Max Draft: 6' 0" (1.83m)

Speed, Capacities and Weight

Displacement: 25000 Pounds

Water Capacity: 140 Gallons

Holding Tank: 100 Gallons

Fuel Capacity: 90 Gallons

Accommodations

Total Cabins: 2

Total Berths: 4

Sleeps: 7

Total Heads: 2

Hull and Deck Information

Hull Material: Fiberglass

Deck Material: Fiberglass

Hull Configuration: Fin & Spade

Hull Color: Navy Blue

Hull Designer: Mark Ellis

Engine Information

Engines: 1

Manufacturer: Yanmar

Engine Type: Inboard

Fuel Type: Diesel

DETAILED INFORMATION

INTRODUCTION

HURU was designed by Mark Ellis and launched by the renowned Bruckmann Yachts in Canada in 2000. She is a wonderful collaboration of one of the best designers and builders and was conceived by a very knowledgeable yachtsman. Although a modern boat in construction and systems, HURU has a classic appeal, with handsome lines and a spacious two-cabin, two-head Herreshoff-style interior below. On deck, HURU has a sweeping sheer, a low trunk cabin, a traditional transom and varnished mahogany cap rails over her bulwarks. Her hull deck joint is glass, not molded. Below the waterline, Ellis designed a modern underbody, with a 6' fin keel and spade rudder for maximum efficiency and speed. HURU has only had two owners, each highly experienced yachtsman who have lavished her with the best care possible. She has been sailed lightly during the summer months and stored indoors during the winter. With her hydraulic furling headsail, hydraulic main halyard and genoa winches, bow thruster and all lines leading back to the cockpit, she is easily sailed by one. She is in pristine condition (even for her young age) and priced to sell; she will not disappoint even the most discriminating yachtsman.

As noted in *Yachting Magazine's* article on HURU (formerly *ALIZÉ III*), "The clients wanted an uncluttered vintage look that maintained a sense of space and elegance, but they refused to tolerate any fussy or contrived elements. As you would expect of a modern sailing couple, they wished for all the amenities that make cruising comfortable, but they didn't want to crowd the boat. Nor did they want to hurt her performance. They wanted everything in moderation and good taste.

That's exactly what they got."

[Click here to view the entire article:](#)

ACCOMMODATIONS

A spacious V-berth stateroom is forward, with ventilation and light provided by an overhead hatch and opening ports. Storage is in a cedar-lined hanging locker to port and aircraft-style lockers outboard and above berths. This cabin has plenty of standing and changing room. Aft to starboard is an en-suite head (new, 2011). The main salon is spacious and open, with abundant natural light and ventilation. A U-shaped dining area is to starboard with comfortable seating for six. Storage is provided in lockers above and outboard of the dining area. The dinette can be converted to a double berth. A straight settee to port provides additional seating. This is also an excellent sea berth. Louvered lockers are above this settee for additional storage. Cushions in the salon are dark blue Ultrasuede, which compliment the Herreshoff-style interior with white bulkheads and varnished mahogany joinerwork. Lighting below is from Cantalupi fixtures. Teak

and holly cabin sole. The U-shaped galley is located aft of the dining area to starboard. Deep double sinks are on the centerline. The galley is equipped with Sea Frost cold plate refrigeration (compressor, 2011) with access above or below, a 3-burner Force 10 propane stove with oven and spacious Corian counters and storage space. Across from the galley is the nav station, with a proper size chart table facing forward. The electric panels are next to the navigator's seat; radar/chartplotter, VHF stereo and tank tender gauges are also located here. Aft of the navigation area is a large head (new, 2011) with a separate shower area, which doubles as a place to store wet foul weather gear. This head is easily accessed from the cockpit, salon or aft cabin. The aft guest cabin is on the starboard side. It is spacious, with a double berth and plenty of foot room to change and maneuver. There is locker storage outboard and above the berth, and a large hanging cedar-lined locker to starboard. There is a separate wet locker outboard of the shower area.

HULL and DECK

Fiberglass hull with core-cell core. The topsides are Navy Blue (Awlgripped, 2012), with a white cove stripe and white boot stripe. The bottom is red.

- Epoxy-coated bottom
- Nonskid is Moonstone Beige
- Stainless steel hairpin bowsprit with anchor roller for 45 lb. Bruce anchor and a 45 lb. CQR

MECHANICAL

- Yanmar 63 hp diesel, 796 hours as of 10/27/2015
- Espar heater
- Bow thruster (new batteries, 2014)
- 3-blade Max Prop with shaft rope cutter (2013)
- New dripless shaft (2015)
- Lewmar hydraulic pack that drives off battery and powers primary winches, main halyard, roller furling and windlass
- Aquadrive bearings with soft engine mounts
- Groco engine raw water strainer
- Dual density sound insulation around engine
- Waterlift muffler
- Racor 500 fuel filter with sight gauge & alarm
- Spare engine parts

PLUMBING

- All new plumbing hoses (2014)

- Pressure hot and cold water in galley and heads
- Hot and cold cockpit shower
- Saltwater deck washdown system
- 10-gallon hot water heater (2015)
- Foot pumps for fresh and sea water in galley and fridge
- Combination shower/faucet in heads with sump & sump pump
- Under-mounted stainless steel sink in galley
- Under-mounted ceramic sinks in heads
- (2) Rule 1500 bilge pumps with automatic float switch
- Bilge alarm (2015)
- (2) #10 Gusher manual bilge pumps: (1) in cockpit and (1) in interior
- Raritan manual heads
- (2) 50-gallon holding tanks with deck pump-out and Hart level gauges
- Waste macerator pumps for overboard discharge

RIGGING and WINCHES

- White triple-spreader tapered mast (Awlgripped, 2011)
- Harken hydraulic headsail roller furling
- Custom stainless steel traveler system by Hinckley Yachts (2011)
- Navtec hydraulic boom vang & backstay system
- Navtec rod standing rigging
- Navtec bridle mainsheet system
- Boom preventer system (new, 2013)
- Masthead burgee crane (new, 2013)
- Running backstays
- Lazy jacks
- Spreader light
- Staysail stay with quick release
- (2) Lewmar 58ST chrome hydraulic primary winches
- (2) Lewmar #50ST chrome secondary winches
- (1) Lewmar #44ST chrome hydraulic main halyard winch
- (2) Lewmar #44ST mainsheet winches
- Lewmar #44ST chrome outhaul winch
- (2) Lewmar ST chrome halyard winches
- (2) 12' Stainless steel genoa tracks outboard
- (2) 12' Stainless steel genoa tracks inboard
- (2) 4' Stainless steel staysail tracks

SAILS

- Doyle mainsail with (2) sets of reefs and lazy jacks (Doyle StackPack, 2011)

- Doyle RF genoa staysail
- Doyle staysail
- Asymmetrical spinnaker

ELECTRICAL SYSTEM

- 12-volt system with (2) 8D gel cell house batteries (2011)
- (1) 8D gel engine battery
- Battery switches
- 130 amp alternator with smart regulator and isolates
- (1) 8D 12-volt battery for bow thruster, located forward
- Link 2000 monitoring system
- Custom 110V AC distribution panel with 30 amp main breaker
- 50 amp battery charger
- 110-volt receptacles in galley, salon, heads & each stateroom
- 50' Shore power cord

ELECTRONICS

- Raymarine 12" touchscreen radar, chartplotter, GPS (2012)
- Autohelm 6000 Autopilot
- Stereo with CD player and cockpit speakers
- 2 kW radar dome on customized gimballed stainless steel bracket on backstay
- Weatherfax
- Raytheon Tridata with remote at chart table
- Tracphone Immarsat telephone
- Tracphone antenna and TV antenna on custom stern pedestal
- Standard Horizon VHF with remote mic at helm

ADDITIONAL EQUIPMENT

- Custom screens for overhead hatches and companionway
- Screens for opening ports
- Varnished cockpit table
- Teak steering wheel
- Stern swim ladder
- Life sling
- Cockpit cushions
- Dodger (2011)
- Bimini (2011)
- Binnacle and wheel cover

- Jacklines
- Emergency tiller
- Lee cloths
- Docklines
- Fenders
- Fire extinguishers

EXCLUSIONS

The owner's personal effects are excluded from the sale.

Exclusions

Owner's personal belongings.

Disclaimer

The Company offers the details of this vessel or yacht in good faith but cannot guarantee or warrant the accuracy of this information nor warrant the condition of the vessel. A buyer should instruct his representatives, agents, or his surveyors, to investigate such details as the buyer desires validated. This vessel or yacht is offered subject to prior sale, price change, or withdrawal without notice.

PHOTOS

Sailing



Main Salon Looking Forward



Main Salon



Main Salon Stbd. Side



Port Side Settee



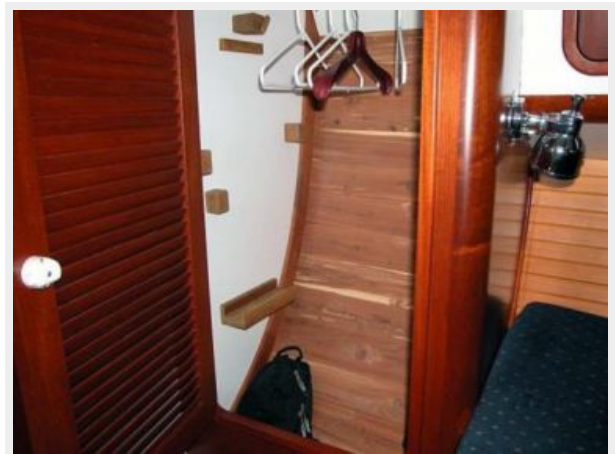
Main Salon Looking Aft



Fwd. Cabin



Cedar-Lined Locker



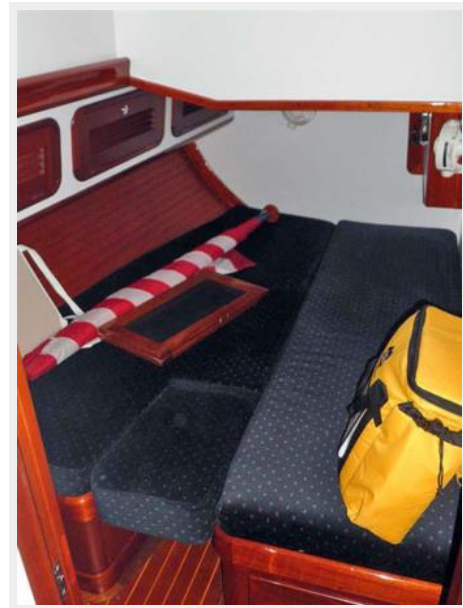
Wine Locker



Fwd. Head



Aft Cabin



Aft Cabin Entrance



Galley



Galley



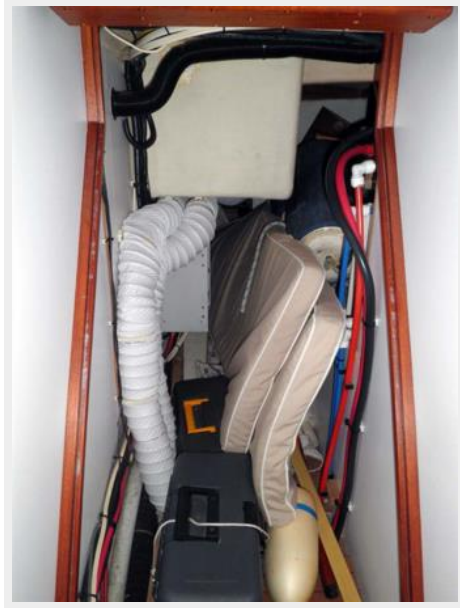
Aft Head Vanity



Aft Head and Shower



Storage Under Companionway



Spinnaker



Headsail Furler



Deck



Deck



Cockpit



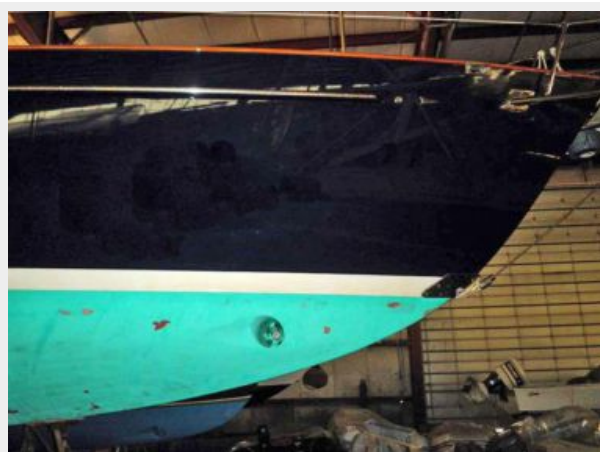
Indoor Storage



Indoor Storage



Bow Thruster



Keel



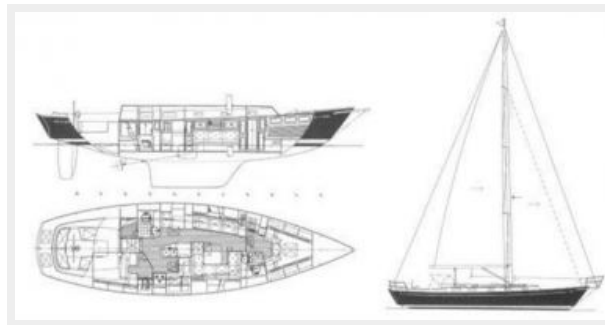
Spade Rudder



Profile



Line Drawings



CONTACTS

Andrey Shestakov, leading yacht broker of the sales department of Shestakov Yacht Sales Inc. Shestakov Yacht Sales Inc., the official representative of the Miami/Fort Lauderdale FL headquarters.

Contact details

Email: **andrey@shestakovyachtsales.com**

Web: shestakovyachtsales.com/en/

Telephones

USA: +1(954)274-4435

Office hours

Monday – Saturday: **9:00 - 21:00** EDT

Sunday: **closed**

Address



Harbour Towne Marina, 850 NE 3rd St,
STE 213, Dania, FL 33004