

## HURU — BRUCKMANN YACHTS



**Судостроитель:** [Bruckmann Yachts](#)

**Год постройки:** 2000

**Модель:** Крейсерская яхта

**Цена:** **ЦЕНА ЯХТЫ ПО ЗАПРОСУ**

**Местонахождение:** United States

**Длина общая:** 47' 0" (14.33m)

**Ширина:** 13' 3" (4.04m)

**Мин. осадка:** 6' 0" (1.83m)

**Макс. осадка:** 6' 0" (1.83m)

Купить **HURU — Bruckmann Yachts** а также выбрать подходящую вам яхту из нашего каталога яхт вам поможет опытный яхтенный брокер Андрей Шестаков. На сегодняшний день компания **Shestakov Yacht Sales Inc.** имеет большое количество яхт в собственном списке продаж, а также тесно сотрудничает со всеми крупными яхтенными производителями по всему миру.

Для того чтобы купить яхту **HURU — Bruckmann Yachts** а также проконсультироваться по любому вопросу связанному с покупкой, продажей, чартером яхт позвоните по телефону **+7(918)465-66-44**.

# ОГЛАВЛЕНИЕ

ОГЛАВЛЕНИЕ	2
ХАРАКТЕРИСТИКИ	5
Обзор	5
Основная информация	5
Размеры	6
Скорость, вместимость и масса	6
Размещение	6
Корпус и палуба	6
Информация о двигателе	6
ПОДРОБНОЕ ОПИСАНИЕ	7
INTRODUCTION	7
ACCOMMODATIONS	7
HULL and DECK	8
MECHANICAL	8
PLUMBING	8
RIGGING and WINCHES	9
SAILS	9
ELECTRICAL SYSTEM	10
ELECTRONICS	10
ADDITIONAL EQUIPMENT	10
EXCLUSIONS	11
Исключения	11
Отказ от ответственности	11
ФОТОГРАФИИ	12
Sailing	12
Main Salon Looking Forward	12
Main Salon	12
Main Salon Stbd. Side	12

Port Side Settee	13
Main Salon Looking Aft	13
Fwd. Cabin	13
Cedar-Lined Locker	13
Wine Locker	14
Fwd. Head	14
Aft Cabin	14
Aft Cabin Entrance	14
Galley	15
Galley	15
Aft Head Vanity	15
Aft Head and Shower	15
Storage Under Companionway	16
Spinnaker	16
Headsail Furler	16
Deck	16
Deck	17
Cockpit	17
Indoor Storage	17
Indoor Storage	17
Bow Thruster	17
Keel	17
Spade Rudder	18
Profile	18
Line Drawings	18
<b>КОНТАКТЫ</b>	<b>19</b>
Контактная информация	19
Телефоны	19
Время работы	19

---

Адрес

19

# ХАРАКТЕРИСТИКИ

## Обзор

HURU was designed by Mark Ellis and launched by the renowned Bruckmann Yachts in Canada in 2000. She is a wonderful collaboration of one of the best designers and builders and was conceived by a very knowledgeable yachtsman. Although a modern boat in construction and systems, HURU has a classic appeal, with handsome lines and a spacious two-cabin, two-head Herreshoff-style interior below. On deck, HURU has a sweeping sheer, a low trunk cabin, a traditional transom and varnished mahogany cap rails over her bulwarks. Her hull deck joint is glass, not molded. Below the waterline, Ellis designed a modern underbody, with a 6' fin keel and spade rudder for maximum efficiency and speed. HURU has only had two owners, each highly experienced yachtsman who have lavished her with the best care possible. She has been sailed lightly during the summer months and stored indoors during the winter. With her hydraulic furling headsail, hydraulic main halyard and genoa winches, bow thruster and all lines leading back to the cockpit, she is easily sailed by one. She is in pristine condition (even for her young age) and priced to sell; she will not disappoint even the most discriminating yachtsman.

As noted in *Yachting Magazine's* article on HURU (formerly *ALIZÉ III*), "The clients wanted an uncluttered vintage look that maintained a sense of space and elegance, but they refused to tolerate any fussy or contrived elements. As you would expect of a modern sailing couple, they wished for all the amenities that make cruising comfortable, but they didn't want to crowd the boat. Nor did they want to hurt her performance. They wanted everything in moderation and good taste.

That's exactly what they got."

[Click here to view the entire article:](#)

## Основная информация

**Тип судна:** Крейсерская яхта

**Подкатегория:** Sloop

**Модельный год:** 2000

**Год постройки:** 2000

**Страна:** United States

**Номер регистрации в береговой охране:** 1231418

**Верх:** Dodger

## Размеры

Длина общая: 47' 0" (14.33m)

Длина по ватерлинии: 35' 7" (10.85m)

Ширина: 13' 3" (4.04m)

Мин. осадка: 6' 0" (1.83m)

Макс. осадка: 6' 0" (1.83m)

## Скорость, вместимость и масса

Водоизмещение: 25000 Pounds

Вместимость воды: 140 Gallons

Вместимость сточного бака: 100 Gallons Объем топливного бака: 90 Gallons

## Размещение

Всего кают: 2

Всего коек: 4

Спальные места: 7

Всего ком. состава: 2

## Корпус и палуба

Материал корпуса: Fiberglass

Материал палубы: Fiberglass

Комплектация корпуса: Fin & Spade

Цвет корпуса: Navy Blue

Дизайнер корпуса: Mark Ellis

## Информация о двигателе

Двигатели: 1

Производитель: Yanmar

Тип двигателя: Inboard

Тип топлива: Diesel

---

# ПОДРОБНОЕ ОПИСАНИЕ

---

## INTRODUCTION

---

HURU was designed by Mark Ellis and launched by the renowned Bruckmann Yachts in Canada in 2000. She is a wonderful collaboration of one of the best designers and builders and was conceived by a very knowledgeable yachtsman. Although a modern boat in construction and systems, HURU has a classic appeal, with handsome lines and a spacious two-cabin, two-head Herreshoff-style interior below. On deck, HURU has a sweeping sheer, a low trunk cabin, a traditional transom and varnished mahogany cap rails over her bulwarks. Her hull deck joint is glass, not molded. Below the waterline, Ellis designed a modern underbody, with a 6' fin keel and spade rudder for maximum efficiency and speed. HURU has only had two owners, each highly experienced yachtsman who have lavished her with the best care possible. She has been sailed lightly during the summer months and stored indoors during the winter. With her hydraulic furling headsail, hydraulic main halyard and genoa winches, bow thruster and all lines leading back to the cockpit, she is easily sailed by one. She is in pristine condition (even for her young age) and priced to sell; she will not disappoint even the most discriminating yachtsman.

As noted in *Yachting Magazine's* article on HURU (formerly *ALIZÉ III*), "The clients wanted an uncluttered vintage look that maintained a sense of space and elegance, but they refused to tolerate any fussy or contrived elements. As you would expect of a modern sailing couple, they wished for all the amenities that make cruising comfortable, but they didn't want to crowd the boat. Nor did they want to hurt her performance. They wanted everything in moderation and good taste.

That's exactly what they got."

[Click here to view the entire article:](#)

---

## ACCOMMODATIONS

---

A spacious V-berth stateroom is forward, with ventilation and light provided by an overhead hatch and opening ports. Storage is in a cedar-lined hanging locker to port and aircraft-style lockers outboard and above berths. This cabin has plenty of standing and changing room. Aft to starboard is an en-suite head (new, 2011). The main salon is spacious and open, with abundant natural light and ventilation. A U-shaped dining area is to starboard with comfortable seating for six. Storage is provided in lockers above and outboard of the dining area. The dinette can be converted to a double berth. A straight settee to port provides additional seating. This is also an excellent sea berth. Louvered lockers are above this settee for additional storage. Cushions in the salon are dark blue Ultrasuede, which compliment the Herreshoff-style interior with white bulkheads and varnished mahogany joinerwork. Lighting below is from Cantalupi fixtures. Teak

and holly cabin sole. The U-shaped galley is located aft of the dining area to starboard. Deep double sinks are on the centerline. The galley is equipped with Sea Frost cold plate refrigeration (compressor, 2011) with access above or below, a 3-burner Force 10 propane stove with oven and spacious Corian counters and storage space. Across from the galley is the nav station, with a proper size chart table facing forward. The electric panels are next to the navigator's seat; radar/chartplotter, VHF stereo and tank tender gauges are also located here. Aft of the navigation area is a large head (new, 2011) with a separate shower area, which doubles as a place to store wet foul weather gear. This head is easily accessed from the cockpit, salon or aft cabin. The aft guest cabin is on the starboard side. It is spacious, with a double berth and plenty of foot room to change and maneuver. There is locker storage outboard and above the berth, and a large hanging cedar-lined locker to starboard. There is a separate wet locker outboard of the shower area.

---

## HULL and DECK

---

Fiberglass hull with core-cell core. The topsides are Navy Blue (Awlgripped, 2012), with a white cove stripe and white boot stripe. The bottom is red.

- Epoxy-coated bottom
- Nonskid is Moonstone Beige
- Stainless steel hairpin bowsprit with anchor roller for 45 lb. Bruce anchor and a 45 lb. CQR

---

## MECHANICAL

---

- Yanmar 63 hp diesel, 796 hours as of 10/27/2015
- Espar heater
- Bow thruster (new batteries, 2014)
- 3-blade Max Prop with shaft rope cutter (2013)
- New dripless shaft (2015)
- Lewmar hydraulic pack that drives off battery and powers primary winches, main halyard, roller furling and windlass
- Aquadrive bearings with soft engine mounts
- Groco engine raw water strainer
- Dual density sound insulation around engine
- Waterlift muffler
- Racor 500 fuel filter with sight gauge & alarm
- Spare engine parts

---

## PLUMBING

---

- All new plumbing hoses (2014)



- Pressure hot and cold water in galley and heads
- Hot and cold cockpit shower
- Saltwater deck washdown system
- 10-gallon hot water heater (2015)
- Foot pumps for fresh and sea water in galley and fridge
- Combination shower/faucet in heads with sump & sump pump
- Under-mounted stainless steel sink in galley
- Under-mounted ceramic sinks in heads
- (2) Rule 1500 bilge pumps with automatic float switch
- Bilge alarm (2015)
- (2) #10 Gusher manual bilge pumps: (1) in cockpit and (1) in interior
- Raritan manual heads
- (2) 50-gallon holding tanks with deck pump-out and Hart level gauges
- Waste macerator pumps for overboard discharge

## RIGGING and WINCHES

---

- White triple-spreader tapered mast (Awlgripp, 2011)
- Harken hydraulic headsail roller furling
- Custom stainless steel traveler system by Hinckley Yachts (2011)
- Navtec hydraulic boom vang & backstay system
- Navtec rod standing rigging
- Navtec bridle mainsheet system
- Boom preventer system (new, 2013)
- Masthead burgee crane (new, 2013)
- Running backstays
- Lazy jacks
- Spreader light
- Staysail stay with quick release
- (2) Lewmar 58ST chrome hydraulic primary winches
- (2) Lewmar #50ST chrome secondary winches
- (1) Lewmar #44ST chrome hydraulic main halyard winch
- (2) Lewmar #44ST mainsheet winches
- Lewmar #44ST chrome outhaul winch
- (2) Lewmar ST chrome halyard winches
- (2) 12' Stainless steel genoa tracks outboard
- (2) 12' Stainless steel genoa tracks inboard
- (2) 4' Stainless steel staysail tracks

## SAILS

---

- Doyle mainsail with (2) sets of reefs and lazy jacks (Doyle StackPack, 2011)

- Doyle RF genoa staysail
- Doyle staysail
- Asymmetrical spinnaker

## ELECTRICAL SYSTEM

---

- 12-volt system with (2) 8D gel cell house batteries (2011)
- (1) 8D gel engine battery
- Battery switches
- 130 amp alternator with smart regulator and isolates
- (1) 8D 12-volt battery for bow thruster, located forward
- Link 2000 monitoring system
- Custom 110V AC distribution panel with 30 amp main breaker
- 50 amp battery charger
- 110-volt receptacles in galley, salon, heads & each stateroom
- 50' Shore power cord

## ELECTRONICS

---

- Raymarine 12" touchscreen radar, chartplotter, GPS (2012)
- Autohelm 6000 Autopilot
- Stereo with CD player and cockpit speakers
- 2 kW radar dome on customized gimballed stainless steel bracket on backstay
- Weatherfax
- Raytheon Tridata with remote at chart table
- Tracphone Immarsat telephone
- Tracphone antenna and TV antenna on custom stern pedestal
- Standard Horizon VHF with remote mic at helm

## ADDITIONAL EQUIPMENT

---

- Custom screens for overhead hatches and companionway
- Screens for opening ports
- Varnished cockpit table
- Teak steering wheel
- Stern swim ladder
- Life sling
- Cockpit cushions
- Dodger (2011)
- Bimini (2011)
- Binnacle and wheel cover

- Jacklines
- Emergency tiller
- Lee cloths
- Docklines
- Fenders
- Fire extinguishers

## EXCLUSIONS

---

The owner's personal effects are excluded from the sale.

## Исключения

---

При продаже яхты исключаются личные вещи владельца.

## Отказ от ответственности

---

Компания предоставляет описание судна или яхты добросовестно, но не может гарантировать точность этой информации, а также не ручается за техническое состояние. Покупатель должен проинструктировать своих агентов или оценщиков исследовать представленную информацию более подробно, по собственному желанию. Продажа судна или яхты, изменение цены или снятие с продажи будет происходить без предварительного уведомления.

# ФОТОГРАФИИ

**Sailing**



**Main Salon Looking Forward**



**Main Salon**



**Main Salon Stbd. Side**



**Port Side Settee**



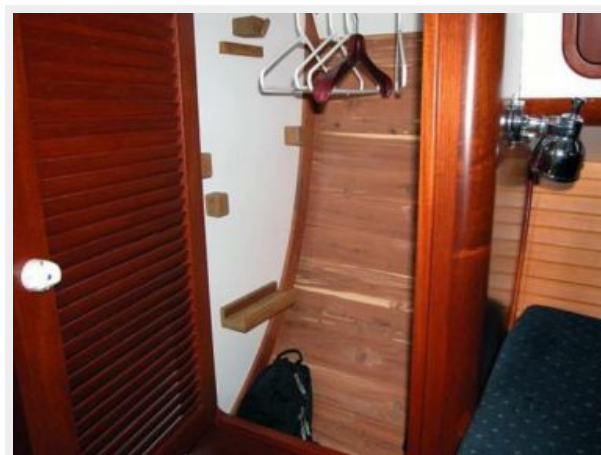
**Main Salon Looking Aft**



**Fwd. Cabin**



**Cedar-Lined Locker**





**Wine Locker**



**Fwd. Head**



**Aft Cabin**



**Aft Cabin Entrance**



**Galley**



**Galley**



**Aft Head Vanity**



**Aft Head and Shower**



### Storage Under Companionway



### Spinnaker



### Headsail Furler



### Deck





**Deck**



**Cockpit**



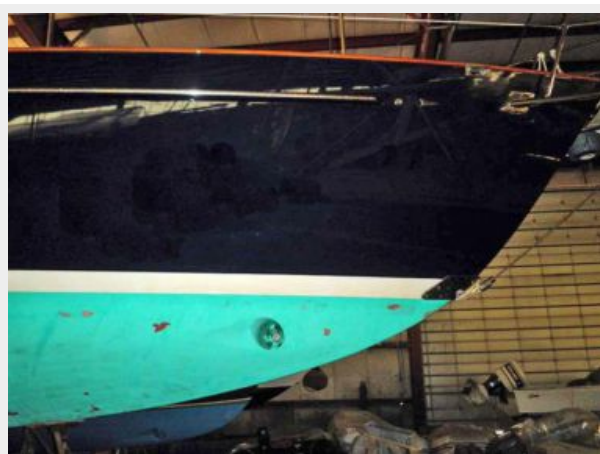
**Indoor Storage**



**Indoor Storage**



**Bow Thruster**



**Keel**



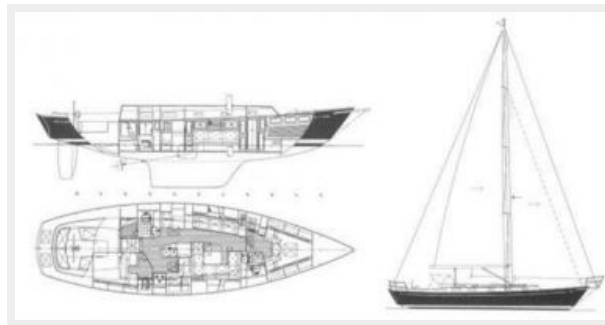
## Spade Rudder



## Profile



## Line Drawings



# КОНТАКТЫ

Андрей Шестаков (Andrey Shestakov) – ведущий яхтенный брокер отдела продаж яхт и судов компании Shestakov Yacht Sales Inc. Официальный представитель Shestakov Yacht Sales Inc. для русскоговорящих клиентов в центральном офисе компании в Майами/Форт Лодердейл/Флорида/США.

## Контактная информация

Email: [andrey@shestakovyachtsales.com](mailto:andrey@shestakovyachtsales.com)

Web: [shestakovyachtsales.com](http://shestakovyachtsales.com)

## Телефоны

Краснодарский край: **+7(918)465-66-44**

США, Майами, Флорида: **+1(954)274-4435**

## Время работы

Понедельник – Суббота: **9:00 - 21:00**  
EDT

Воскресенье: **Закрито**

## Адрес



Harbour Towne Marina, 850 NE 3rd St,  
STE 213, Dania, FL 33004