

CORK TRICK — TARRAB



Builder: TARRAB

Year Built: 2001

Model: Motor Yacht

Price: PRICE ON APPLICATION

Location: United States

LOA: 92' 0" (28.04m)

Beam: 21' 6" (6.55m)

Min Draft: 4' 11" (1.50m)

Max Draft: 5' 1" (1.55m)

Cruise Speed: 18 Kts. (21 MPH)

Max Speed: 21 Kts. (24 MPH)

Our experienced yacht broker, Andrey Shestakov, will help you choose and buy a yacht that best suits your needs **CORK TRICK — TARRAB** from our catalogue. Presently, at Shestakov Yacht Sales Inc., we have a wide variety of yachts available on our sale's list. We also work in close contact with all the big yacht manufacturers from all over the world.

If you would like to buy a yacht **CORK TRICK — TARRAB** or would like help answering any questions concerning purchasing, selling or chartering a yacht, please call **+1(954)274-4435**

TABLE OF CONTENTS

TABLE OF CONTENTS	2
SPECIFICATIONS	7
Basic Information	7
Dimensions	7
Speed, Capacities and Weight	7
Accommodations	7
Hull and Deck Information	8
Engine Information	8
DETAILED INFORMATION	9
Walkthrough	9
Salon	10
Dining Area	11
Portside Companionway	11
Day Head	11
Galley	11
Pilothouse	12
VIP Cabin	12
VIP Head	12
Main Accommodation Area	13
Portside Guest Stateroom	13
Guest Head	13
Starboard Side Guest Stateroom	13
Starboard Guest Head	13
Master Cabin	13
Master Head	14
Foredeck	14
Side Decks	15
Aft Deck	15

Cockpit	15
Flybridge	16
Area Aft of Hardtop	16
Boat Deck	16
Hardtop Equipment	16
Helm Area	16
Crew Area	16
Crew Head	17
Engine Room	17
Electrical	17
Remarks	17
Exclusions	18
Disclaimer	18
Exclusions	18
Disclaimer	18
PHOTOS	19
Salon Looking Forward	19
Salon to Starboard Aft	19
Salon to Starboard	19
Salon to Port	19
Dining Area to Port	19
Dining Area	19
Dining Table	20
Port Hutch	20
Starboard Hutch	20
Incredible Joinery Detail	20
Salon Looking Aft	20
Portside Companionway	20
Companionway Wine Storage	21

Day Head	21
Galley	21
Galley Looking Aft	21
Galley Looking Forward	21
Main Deck Companionway Forward	21
Lower Helm	22
Lower Helm	22
Helm Detail Port	22
Helm Detail Starboard	22
Helm Overhead	22
Pilothouse Settee	22
Pilothouse Settee	23
Flybridge Access Steps from Pilothouse	23
VIP Companionway	23
VIP	23
VIP to Starboard	23
VIP Head	23
Port Guest	24
Port Guest Looking Aft	24
Port Guest Head	24
Starboard Guest	24
Starboard Guest Head	24
Master	24
Master Looking to Port	25
Master Looking to Starboard	25
Master Vanity	25
Master Looking Forward	25
"His" Head Starboard	25
Mid Jacuzzi/Shower	25

"Her" Head Port	26
Portside Bow Area	26
Windlass Detail	26
Bow Seat/Table	26
Starboard Bow Side Deck	26
Full Beam Salon	26
Aft Deck	27
Aft Deck	27
Aft Deck TV	27
Aft Deck Cooler	27
Aft Deck Gate	27
Cockpit	27
Back Door Station/Live Well	28
Transom	28
Cockpit Forward Crew/Engine Room Access	28
Flybridge Portside	28
Flybridge Starboard Side	28
Flybridge Aft	28
Flybridge Fridge/Sink	29
Flybridge Grill	29
Flybridge 1500 lb. Crane	29
Helm Seat	29
Helm	29
Helm Overhead	29
Crew Access	30
Captain's Cabin	30
Crew Head	30
Crew Cabin	30
Crew Laundry	30

Engine Room Looking Forward	30
Port Engine	31
Starboard Engine	31
Full Gauge Package	31
Stabilizer System	31
Port Gen	31
Starboard Gen	31
Bow	32
Alternate Profile	32
Alternate Profile	32
Stern	32
CONTACTS	33
Contact details	33
Telephones	33
Office hours	33
Address	33

SPECIFICATIONS

Basic Information

Category: Motor Yacht

Sub Category: Cockpit

Model Year: 2002

Year Built: 2001

Country: United States

Vessel Top: Arch

Fly Bridge: Yes

Cockpit: Yes

Dimensions

LOA: 92' 0" (28.04m)

Beam: 21' 6" (6.55m)

Min Draft: 4' 11" (1.50m)

Max Draft: 5' 1" (1.55m)

Speed, Capacities and Weight

Cruise Speed: 18 Kts. (21 MPH)

Cruise Speed RPM: 1950 Kts.

Max Speed: 21 Kts. (24 MPH)

Max Speed RPM: 2300 Kts.

Displacement: 90000 Pounds

Gross Tonnage: 45 Pounds

Water Capacity: 260 Gallons

Fuel Capacity: 2700 Gallons

Accommodations

Total Cabins: 4

Total Berths: 6

Sleeps: 8

Total Heads: 5

Captain Cabin: True

Crew Cabin: 2

Crew Berths: 3

Crew Sleeps: 4

Crew Heads: 1

Hull and Deck Information

Hull Material: Fiberglass

Deck Material: Fiberglass

Hull Configuration: Semi Vee

Hull Designer: Tarrab

Exterior Designer: Tarrab

Interior Designer: Tarrab

Engine Information

Engines: 2

Manufacturer: Caterpillar

Engine Type: Inboard

Fuel Type: Diesel

DETAILED INFORMATION

Walkthrough

The Cockpit is accessed via relatively low gunwales from a fixed dock, or one may choose to walk aboard her sizable swim platform and through the walk through transom into the spacious Cockpit with teak sole, Lazarette access, storage cabinets, a transom bait well and sink are found in this area. Also the aft controls complete with Mathers electronic shifters and hydraulic bow thruster controls, are in this area, and of course the access to the Engine Room and Crew Quarters aft through a full size door.

Down a few steps are the Crew Quarters with two Staterooms.

There is access in the Foyer to both the washer and dryer, as well as a Crew Head and stall shower shared by the both Staterooms.

The Engine Room access is forward of the Crew with ample access to both generators, their water supply equipment, fuel supply and filtration, as well as water supply for the air conditioning chilled water system and compressors.

Moving back up into the Cockpit, either side are staircases up onto the Aft Deck. The Aft Deck is fully covered with a full molded transom seat with storage underneath. The teak table is a full 6 ft. wide with an additional four chairs positioned around for a total accommodations for eight. The forward area of the Aft Deck has a ladder to access the aft area of the Flybridge Deck and tender storage. The entrance to the full beam Salon is located just to the right of the ladder on centerline.

Once inside the Salon one immediately notices the value of her full 21'6" beam layout. Large settees are located on both port and starboard sides with a table and two large barrel type chairs for entertaining.

The interior of CORK TRICK has been completely updated with new soft goods (2012).

Forward of the Salon is a formal Dining Area suited for eight owners and guests. The forward cabinets are able to showcase fine china and tableware. There is abundant cabinet space around the dining area for tableware.

Moving forward in to the foyer to port is the huge Day Head with Headhunter toilet, lighted vanity with marble tops, and ample storage for toiletries.

Access to the Master & Guests Staterooms is down a spiral staircase centerline. The Galley entrance is also at this point with a large working galley with all American appliances and huge commercial Sub Zero refrigeration units, as well as granite floors and Galley countertops.

The foyer leads forward to the large Pilothouse. This area features guest seating for six with a panoramic view of the surrounding activity and crew's operation of the yacht. The dash is

massive and ergonomic, featuring all necessary equipment.

Access to the Forward Decks is from both port and starboard Pilothouse doors around to the spacious bow. This bow has high railing for guests and a huge sun pad, which converts to a forward table and dining area.

The internal access to the Flybridge is from the aft of the Pilothouse. Once on the Flybridge Deck one will notice the vast entertainment seating positions available to all guests. The hard top and EZ2CY hard enclosures forward ensure minimization to the elements while cruising, and sun lovers can enjoy nearly 20 ft. of open Aft Deck with seating, grill top, and refrigeration for beverages. The dinghy is a 15 ft. center console Novurania with a 70 hp Yamaha, hoisted by a Marquipt 1500 lb davit crane.

Returning to the Pilothouse, there are two options to go to below Guest and Owner Accommodations. The VIP is secluded forward down a staircase to port. This a large Stateroom with its own entertainment and abundant storage, to include a cedar lined hanging locker and very large en suite Head with Headhunter toilet, large stall shower, marble counter tops, lighted vanity, and ample toiletry storage.

The main Staterooms are located amidships, accessed by walking aft through the Pilothouse and down another spiral staircase. There is an additional washer dryer for the main Staterooms in the Foyer at the below deck landing.

The Guest Staterooms are a mirrored arrangement forward; each with large side by side berths, custom linens, a center lamp, reading lights, abundant drawer and cabinet storage, and cedar lined hanging lockers. Each of these Staterooms enjoys its own en suite Head with lighted vanity, marble countertops and sink, under counter storage, stall shower and Headhunter toilet.

The Master is most impressive with his and hers walk in cedar lined closets, a vanity with cosmetic storage and mirror for her large enough to accommodate a self standing chair. There is an incredible amount of drawer storage both port and starboard. The centerline king berth features overhead reading lights, and a custom mattress, with custom linens.

His and Hers Heads separated by a Jacuzzi tub and shower help identify this as the Master Cabin!

Salon

Salon is entered slightly to port via an oversized sliding weather tight door. Immediately to port is a burl wood cabinet with a 46 inch LG TV and four cabinet doors below housing the yacht's entertainment electronics. These include a Denon AV receiver, a Samsung Blue Ray player and a direct TV HD receiver. Next forward is a three person upholstered sofa with a built in end table with table lamp furthest forward. To the starboard side upon entering is an upholstered barrel

chair with a built in end table outboard followed by a larger four person upholstered sofa and a built in end table with table lamp. Also in this area is a large coffee table and an additional matching upholstered chair facing aft. The Salon has a carpeted sole, large side and aft windows covered with Roman shades, valance type air conditioning delivery, digital AC controls and four Poly Planer stereo type speakers. Newly installed LED lights are above.

Dining Area

Next forward and open to the Salon is the yacht's Dining Area easily identifiable by its high gloss teak and holly sole. An eight person burl wood table with eight matching burl wood trimmed chairs is centerline. To port are six cabinet doors with rope lighting in the toe kick below, housing bar storage, an Icerette icemaker, a lift up bar top with a stainless bar sink below, two drawers and numerous cutouts for glassware and bottles. Forward in this area are two beveled edge glass storage cabinets built to hold all of the yachts stemware and lit from within. Six additional cabinets below a framed centered mirror conceal additional Dining Area storage with rope lighting below in the toe kick. Also in this area are large side windows covered with Roman shades, two Poly Planner stereo speakers and a sliding pocket door to separate the areas forward.

Portside Companionway

Going forward, the Portside Companionway has a granite sole, curved steps to the main accommodations below and access to the oversized Day Head. Access to the Pilothouse is forward and to starboard access to the Galley. Also in this area is a two door cabinet for wine storage and large outboard windows covered with Roman shades.

Day Head

The yacht's Day Head has a Crema Marfil marble sole and matching countertop. The vanity has two cabinets below and under mount sink above. The toilet is a Headhunter jet head. Two walls have large smoked mirrors with the others and attractive gold wallpaper.

Galley

The yacht's Galley is to starboard and is entered via a sliding pocket door. The sole is granite tile to match the granite countertops. Large side outboard windows add ample lighting. Equipment includes:

Sub Zero 35 inch wide refrigerator Matching Sub Zero 35 inch wide freezer GE trash compactor GE Profile dishwasher GE built in oven GE Ceran top cook top GE Profile microwave convection oven with exhaust fan & work light Large sink with drain tray & garbage disposal (20) Burl wood

cabinet doors (5) Burl wood drawers Overhead LED lighting

Pilothouse

Forward from the Galley and accessed via the Portside Companionway is the large Pilothouse. Features include:

Teak & holly sole Excellent visibility via (11) windows Aft six person leather settee w/kidney shaped burl wood table (2) Large decorative columns aft on burl wood aft wall Chart desk to starboard Stidd helm chair Port & starboard sliding Pilothouse weather doors Overhead graphic panel of ship's systems 72 Mile Furuno color radar Furuno Nav Net plotter Icom M502 VHF w/DSC Naiad Marine thruster control KVH Tracphone handset Panasonic phone system CAT electronic gauges w/alarm panels Northern Lights gauge panels for each gen Wiper controls Naiad Multi Sea 2000 digital stabilizer control Robertson AP 20 autopilot Mathers electronic single lever controls Stainless helm wheel VDO rudder angle indicator Ritchie 5" magnetic compass Key start/stop switches Fireboy emergency override system Northstar 952X backup GPS Furuno FI 50 wind instrument Furuno FI 50 digital depth (2) VEI 15" monitors for CCTV Nobeltec software for PC navigation w/a dedicated PC & 24" LCD monitor Command mic for Icom VHF Bilge alarm system Door open alarm system Emergency shutdown buttons ARC RCL 100 Point Pad searchlight control

VIP Cabin

From the portside of the Pilothouse down ten curved steps just inboard of the Galley is the private VIP Cabin with a queen sized pedestal berth amidships. Forward of the berth is a large mirrored bulkhead with three reading lights above. To both port and starboard are built in berth level cabinets to serve as a nightstand. Each cabinet had three fold down storage lockers. Above the shelf to both port and starboard are four large storage cabinets, the portside housing a Samsung 18 inch LCD TV, a Direct TV HD receiver, Pioneer AM/FM CD stereo and a Panasonic DVD player. Also in this cabin are digital AC controls, a central vacuum outlet and a cedar lined auto lit hanging locker.

VIP Head

The VIP private Head has a Crema Marfil tile sole and matching vanity top. The vanity has two cabinet doors below and an under mount sink above. The raised toilet is a Head Hunter jet head model. Two deep storage cabinets are above the head. To port is a stall shower with a clear glass door, a handheld or wall mountable shower fixture, a light and an exhaust fan. Almost the entire aft bulkhead of the Head is covered with a beveled edge clear glass mirror.

Main Accommodation Area

Down nine curved carpeted steps is the main accommodation area with Master aft and two Twin Staterooms forward. At the base of the stairs behind a hinged door is a stacked GE washer and dryer.

Portside Guest Stateroom

The Portside Guest Stateroom has twin single berths with two large drawers below. Between is TV, a Direct TV HD receiver, Pioneer AM/FM CD stereo and a Panasonic DVD player. Next aft is a cedar lined, auto lit hanging locker. Furthest aft is the entrance to the private Guest Head.

Guest Head

The Guest Head had a Crema Marfil sole and matching countertop. The vanity has a single cabinet door below and under mount sink above with two tone fixtures above. The Toilet is a Head Hunter jet flush model. The stall shower has a clear glass door, a handheld or wall mountable shower fixture, a light and an exhaust fan. Also in the Head is a medicine cabinet and a large beveled edge mirror above the sink.

Starboard Side Guest Stateroom

The matching Starboard Side Guest Stateroom has twin single berths with two large drawers below. Between is TV, a Direct TV HD receiver, Pioneer AM/FM CD stereo and a Panasonic DVD player. Next aft is a cedar lined, auto lit hanging locker. Furthest aft is the entrance to the private Guest Head.

Starboard Guest Head

The Starboard Guest Head had a Crema Marfil sole and matching countertop. The vanity has a single cabinet door below and under mount sink above with two tone fixtures above. The toilet is a Head Hunter jet flush model. The stall shower has a clear glass door, a handheld or wall mountable shower fixture, a light and an exhaust fan. Also in the Head is a medicine cabinet and a large beveled edge mirror above the sink.

Master Cabin

Entering from forward there is a king size berth on centerline facing forward. Either side are four drawer built in night stands with table lamp above. Outboard of the nightstands are doors to the His and Her Heads. Above the berth is an upholstered headboard and a large smoked mirror panel. On the forward bulkhead is a cabinet with a 26 inch Samsung LCD TV and a Sony

component CD stereo. A cabinet below had a Sony five disc changer. Next outboard to starboard is a very large walk in cedar lined, auto lit closet with a safe within. To the port side is a smaller walk in cedar lined, auto lit hanging locker. Next aft is a vanity and chair with a beveled edge dressing mirror above. Further aft is a chest with four drawers and four cabinet doors. Above are two stainless steel portholes with weather covers covered by drapes and Roman shades. On the starboard side outboard is a matching cabinet with four drawers, four cabinet doors, two portholes, drapes and Roman shades.

Master Head

The Master Head, actually His and Her Heads can only be described as opulent. Access is from either side of the bed with a two person Jacuzzi tub/shower between. The shower has sliding glass panels either side with a handheld and fixed shower head above. Each head has a Crema Marfil sole and forward bulkhead with matching countertops. The vanities have four storage cabinets below and an under mount sink with two tone fixtures above. Each toilet is a Head Hunter jet head. Also in each Head are two door medicine cabinets and a large beveled edge mirror on the aft bulkhead.

Foredeck

Fiberglass nonskid deck

Maxwell 3500 windlass w/gypsy & rope capstan

Up/down foot switches for windlass

Stainless steel anchor chute w/roller

Manson plow anchor

Fiberglass cap rails

Stainless steel bow rail

(2) JL Audio speakers w/volume switch

(2) Bow cleats

(2) Stainless fairleads w/rollers

U shaped bow seat w/seating for 6 – 8 people w/removable cushions & covers

Hi lo table w/cushions converts to sun lounge

Hatch into rope locker w/additional storage shelves within

- (3) Pantograph windshield wipers
- (2) Built in bow dunnage boxes outboard of seating
- Textulene windshield cover
- Walk around side decks to Pilothouse door
- 7 Step Marquipt Tide Ride ladder
- (2) Sliding Pilothouse doors
- (4) Overhead lights at Pilothouse doors
- (2) Hinged rail gates at Pilothouse doors
- (2) Marquipt step pads
- (2) Forward spring line cleats & stainless fairleads
- International Navigation lights

Side Decks

Handrail over cabin side windows (20) Overhead LED lights Nonskid fiberglass catwalks

Aft Deck

Teak decking over fiberglass Full hardtop over Aft Deck (4) Large stainless trimmed overhead lights (fluorescent) (6) Small stainless trimmed overhead lights (LED) (3) CCTV cameras, (1) aft, (2) side deck Life ring w/retrieval line (2) Poly Planer speakers w/volume control 32" Samsung LCD TV (2) Stainless steel support poles Teak dining table w/adjustable height Built in seating for 4 – 5 aft w/removable cushions (4) Loose Resin chairs w/matching cushions Stainless steel rail w/port & starboard hinged rail breaks (2) Hinged boarding gates to Cockpit w/plexi inserts (2) Marquipt step plates TRUE stainless steel drink fridge Sliding door to Salon

Cockpit

Teak over fiberglass decking 7' Fore to aft Cockpit (4) Teak steps to Aft Deck port & starboard (8) LED step lights Portside cabinet w/Corian top & under mount stainless steel sink w/storage below (2) Stern cleats w/stainless steel fairleads (3) LED low level Cockpit lights (4) Rod holders w/covers Walk through transom door Hinged hatch into Lazarette w/weather gasket Rebuilt rudder mounts (2) Halogen underwater lights 45 Gallon fresh oil tank in Lazarette Starboard side matching cabinet w/Corian top Aft live well Aft controls w/Mathers electronic control & bow thruster control Stainless stern flag staff Integral swim platform (2) Stern mounted cleats

Removable 5 step dive ladder, stored Padded bolsters aft Hinged Engine Room/Crew door
Freshwater wash down 110V GFCI outlet

Flybridge

Nonskid fiberglass sole Center helm Large fiberglass hardtop w/arch type support Five panel poly carbonate enclosure panels forward (3) Cabinet doors aft of helm seat Twin L shaped settees w/removable cushions, storage below & Corian end table Triangular fiberglass tables in front of settees (9) Low level LED lights (2) Poly Planer stereo speakers (2) Overhead fluorescent lights in hardtop (7) Overhead LED perimeter lights

Area Aft of Hardtop

Portside GE Monogram stainless steel drink refrigerator Under mount stainless steel sink under hinged top w/storage cabinet below Starboard side Gaggenau electric grill w/storage below Port & starboard center facing bench seating (2) Bench seats facing forward Freshwater wash down (2) Resin type sun lounges w/matching cushions

Boat Deck

(2) Fiberglass nonskid sole Tender chocks Novurania Deck box for storage Marquipt 1500 lb. electric lift Boat deck ladder & hatch to Aft Deck (2) Quartz spotlights facing Cockpit

Hardtop Equipment

Life rafts mounted on hardtop (2) 2 Person kyaks Radar mast 6' Furuno radar open array 4'
Furuno radar open array

Helm Area

3 Person helm seat w/removable cushions & footrest Centerline stainless steel helm wheel CAT electronic gauges w/alarm panels Mathers single lever controls AP 20 autopilot control Windlass controls Naiad thruster control VDO rudder angle indicator Furuno Nav Net VX2 Key start/stop switches Furuno FCV 5826 color depth sounder Furuno FI 50 depth Furuno FI 50 data ACR RCL 100 searchlight control Ritchie 4" magnetic compass Garmin 7212 plotter, touch screen, mounted overhead Icom 412 VHF Sea Tel Sat TV controls

Crew Area

The Crew Area is accessed only from the Cockpit. Going forward to starboard is the Captain's

Cabin with a double berth below and a single berth above in a cross crossed pattern. There's a 32 inch RCA LCD TV with built in DVD player. Storage in this cabin is via five drawers and a half height hanging locker

Next forward back out in the Center Companionway is a stacked Frigidaire washer dryer. Across the Companionway behind a sliding pocket door is a single cabin crew berth with a 24 inch RCA LCD TV with built in DVD player. There are two small hanging lockers and three large drawers in this cabin.

Crew Head

The Crew Head is aft and has a marble top vanity with under mount stainless sink and a Head Hunter jet head. The stall shower has a handheld or wall mounted shower fixture, a light and an exhaust fan behind a clear glass shower door.

Engine Room

Village Marine 800 GPD watermaker Fireboy Halon system 30 Gallon water heater (3) Chilled water AC units Soft starts for AC's Crash pumps on both engines Engine Room blowers Air compressor, domestic (2) Direct Reading generator gauges, oil & water temp Fuel manifold & transfer system Naiad 254 stabilizer system w/6' sq. ft. fins CAT Direct Reading engine gauges (3) Racors 1000 each engine Racors 900 in fuel transfer system (2) Racors 900 for generators Engine coolant expansion bottles Leeson oil change pump Overhead rod racks (16) rods Walker air seps Engine block heaters Bilge pump counter Water spigot in Engine Room Blackwater tank has overboard discharge pump & dockside deck plate Twin Disc Marine gears 35 HP Naiad hydraulic bow thruster w/PTO from port generator 3.5" Aquamet prop shafts Hynautic power assist steering Head Hunter Jet Head water pump Backup water pump system Grey water tank system w/auto discharge

Electrical

Northern Lights 33 KW generator in sound enclosure Northern Lights 33 KW generator in sound enclosure Charles 60 amp 12 volt house charger Charles 20 amp 24 volt engine charger (6) Group 27 batteries, new 2015 (6) 8D batteries, new 2015 Main electrical panel in Crew Area w/generator start/stops In/out blower controls Analog frequency meter Analog volt & amp meter (6) Battery selector switches Sub panels in Pilothouse w/volt & amp meters

Remarks

CORK TRICK has a very proven fiberglass hull with reliable 3412 CAT engines, and reasonable

hours.

Her layout is that of a tried and true semi raised Pilothouse with a total of four Guest Cabins including an opulent Master Suite with His and Her Heads.

The huge Flybridge is partially covered with a hardtop but has plenty of sunning area as well. Her large Cockpit offers great access to the water and her Aft Deck is shaded for al fresco dining.

CORK TRICK has been painted and had her interior refreshed in recent years. She is ready to cruise today!

Exclusions

While every effort was made to list all pertinent included equipment aboard CORK TRICK, there are some personal belongings aboard. Prospective purchasers should assume any item not specifically mentioned herein will not convey at closing.

Disclaimer

The Company offers the details of this vessel in good faith but cannot guarantee or warrant the accuracy of this information nor warrant the condition of the vessel. A buyer should instruct his agents, or his surveyors, to investigate such details as the buyer desires validated. This vessel is offered subject to prior sale, price change, or withdrawal without notice.

Exclusions

Owner's personal belongings.

Disclaimer

The Company offers the details of this vessel or yacht in good faith but cannot guarantee or warrant the accuracy of this information nor warrant the condition of the vessel. A buyer should instruct his representatives, agents, or his surveyors, to investigate such details as the buyer desires validated. This vessel or yacht is offered subject to prior sale, price change, or withdrawal without notice.

PHOTOS

Salon Looking Forward



Salon to Starboard Aft



Salon to Starboard



Salon to Port



Dining Area to Port



Dining Area



Dining Table



Port Hutch



Starboard Hutch



Incredible Joinery Detail



Salon Looking Aft



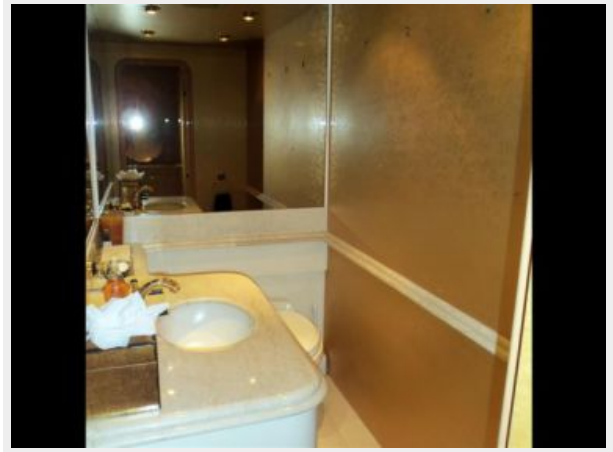
Portside Companionway



Companionway Wine Storage



Day Head



Galley



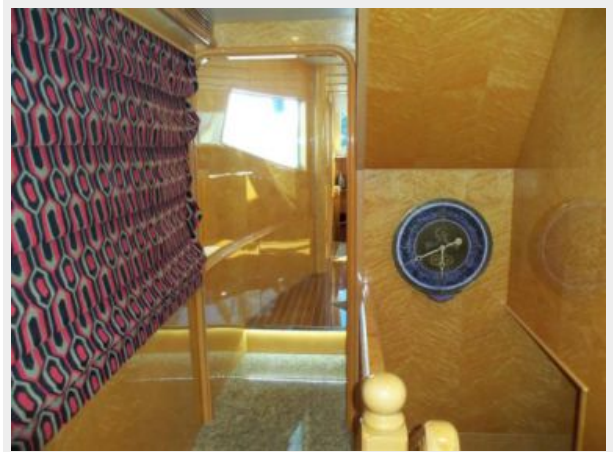
Galley Looking Aft



Galley Looking Forward



Main Deck Companionway Forward



Lower Helm



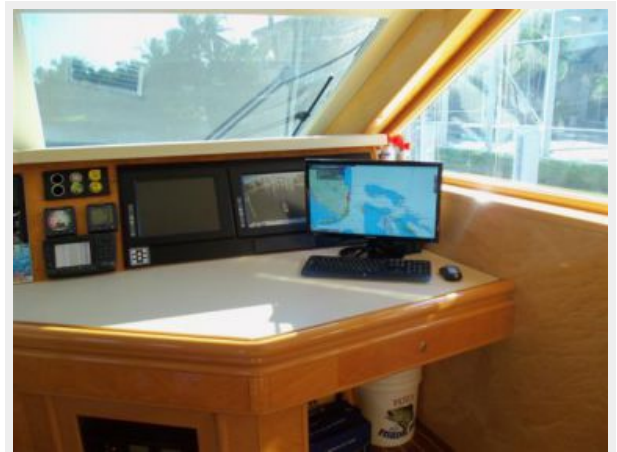
Lower Helm



Helm Detail Port



Helm Detail Starboard



Helm Overhead



Pilothouse Settee



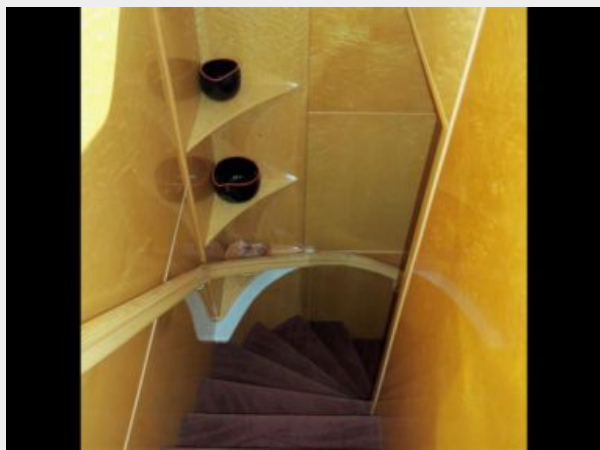
Pilothouse Settee



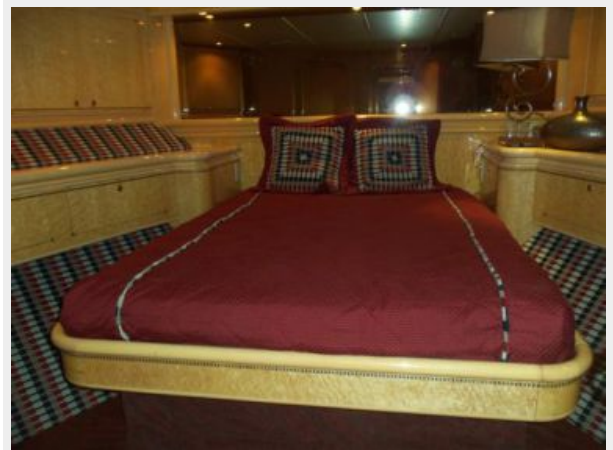
Flybridge Access Steps from Pilothouse



VIP Companionway



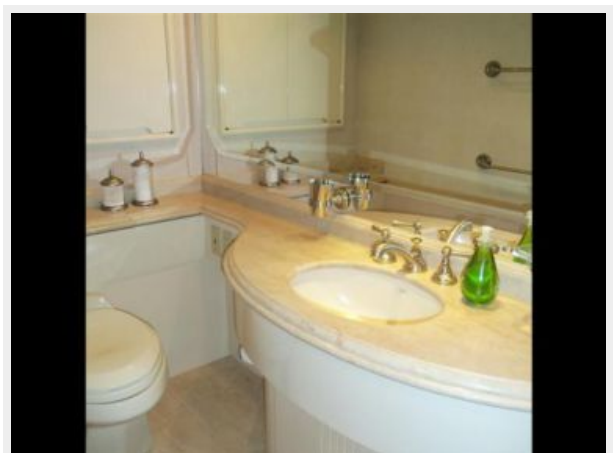
VIP



VIP to Starboard



VIP Head



Port Guest



Port Guest Looking Aft



Port Guest Head



Starboard Guest



Starboard Guest Head



Master



Master Looking to Port



Master Looking to Starboard



Master Vanity



Master Looking Forward



"His" Head Starboard



Mid Jacuzzi/Shower



"Her" Head Port



Portside Bow Area



Windlass Detail



Bow Seat/Table



Starboard Bow Side Deck



Full Beam Salon



Aft Deck



Aft Deck



Aft Deck TV



Aft Deck Cooler



Aft Deck Gate



Cockpit



Back Door Station/Live Well



Transom



Cockpit Forward Crew/Engine Room Access



Flybridge Portside



Flybridge Starboard Side



Flybridge Aft



Flybridge Fridge/Sink



Flybridge Grill



Flybridge 1500 lb. Crane



Helm Seat



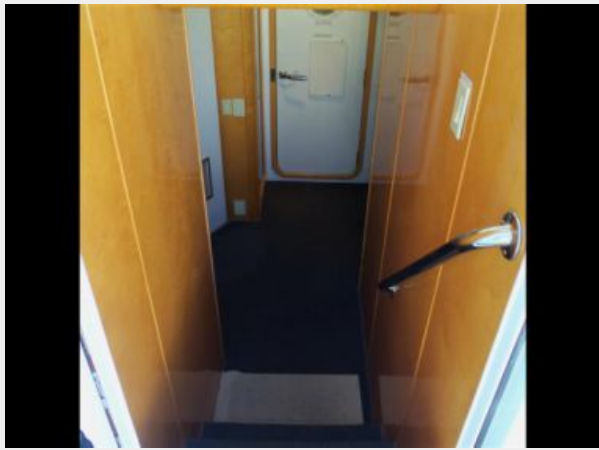
Helm



Helm Overhead



Crew Access



Captain's Cabin



Crew Head



Crew Cabin



Crew Laundry



Engine Room Looking Forward



Port Engine



Starboard Engine



Full Gauge Package



Stabilizer System



Port Gen



Starboard Gen



Bow



Alternate Profile



Alternate Profile



Stern



CONTACTS

Andrey Shestakov, leading yacht broker of the sales department of Shestakov Yacht Sales Inc. Shestakov Yacht Sales Inc., the official representative of the Miami/Fort Lauderdale FL headquarters.

Contact details

Email: andrey@shestakovyachtsales.com

Web: shestakovyachtsales.com/en/

Telephones

USA: +1(954)274-4435

Office hours

Monday – Saturday: **9:00 - 21:00** EDT

Sunday: **closed**

Address



Harbour Towne Marina, 850 NE 3rd St,
STE 213, Dania, FL 33004