

## DEBAITABLE — VIKING



**Builder:** VIKING

**Year Built:** 2010

**Model:** Sport Fisherman

**Price:** PRICE ON APPLICATION

**Location:** United States

**LOA:** 50' 0" (15.24m)

**Beam:** 17' 0" (5.18m)

**Min Draft:** 5' 6" (1.68m)

**Cruise Speed:** 33 Kts. (38 MPH)

**Max Speed:** 39 Kts. (45 MPH)

Our experienced yacht broker, Andrey Shestakov, will help you choose and buy a yacht that best suits your needs **DEBAITABLE — VIKING** from our catalogue. Presently, at Shestakov Yacht Sales Inc., we have a wide variety of yachts available on our sale's list. We also work in close contact with all the big yacht manufacturers from all over the world.

If you would like to buy a yacht **DEBAITABLE — VIKING** or would like help answering any questions concerning purchasing, selling or chartering a yacht, please call **+1(954)274-4435**

# TABLE OF CONTENTS

TABLE OF CONTENTS	2
SPECIFICATIONS	5
Overview	5
Basic Information	5
Dimensions	5
Speed, Capacities and Weight	5
Accommodations	6
Hull and Deck Information	6
Engine Information	6
DETAILED INFORMATION	7
Accommodations	7
Master Stateroom, Amidship Starboard	7
Guest Stateroom, Forward	7
Guest Stateroom, Amidship Port	8
Salon	8
Master Head	9
Guest Head, Forward Port	9
Galley / Laundry, Main Deck, Amidship Starboard	9
Helm / Electronics and Navigation	10
Deck	10
Engine and Mechanical Equipment	11
Electrical System / Equipment	11
Cockpit / Fishing Equipment	12
Exclusions	12
Salesman's Comments	12
Exclusions	12
Disclaimer	13
PHOTOS	14

Master Stateroom 1	14
Profile 2	14
Master Stateroom 2	14
Master Stateroom 3	14
Guest Stateroom, Amidship Port	15
Master Stateroom 4 - TV	15
Salon 1 - Sofa	15
Salon 2 - Sofa	15
Salon 3 - Dinette	15
Salon 4 - Dinette	15
Salon 5	16
Salon 6	16
Master Head 1	16
Master Head 2 - Shower	16
Laundry	17
Galley	17
Helm / Electronics & Navigation 1 - Electronics	17
Helm / Electronics & Navigation 2 - Electronics	17
Helm / Electronics & Navigation 3 - Radio Box	18
Helm / Electronics & Navigation 4 - Port Side Electronics Box	18
Helm / Electronics & Navigation 5 - Drop Down Radio Box	18
Deck 1 - Bow	18
Deck 2 - Bow Pulpit	19
Deck 3 - Bridge Seating	19
Deck 4 - Bridge	19
Deck 5 - Starboard Bridge Seating	19
Deck 6 - Bridge Cooler	19
Deck 7 - Lazarette	19
Deck 8 - Port Dockside Box	20

Deck 9 - Starboard Dockside Box	20
Engine & Mechanical Equipment 1 - Port Engine	20
Engine & Mechanical Equipment 2 - Starboard Engine	20
Engine & Mechanical Equipment 3 - Starboard Engine	21
Engine & Mechanical Equipment 4 - Engine Room	21
Engine & Mechanical Equipment 5 - Engine Room	21
Cockpit / Fishing Equipment 1 - Cockpit	21
Cockpit / Fishing Equipment 3 - Mezzanine Seating w/ Storage Box	21
Cockpit / Fishing Equipment 2 - Mezzanine	21
Cockpit / Fishing Equipment 4 - Refrigerated Drink Boxes & Tackle Storage	22
Cockpit / Fishing Equipment 5 - Storage	22
Cockpit / Fishing Equipment 6 - Rocket Launcher	22
Running Profile 1	22
Running Profile 2	22
Sunset Profile	22
<b>CONTACTS</b>	<b>23</b>
Contact details	23
Telephones	23
Office hours	23
Address	23

---

# SPECIFICATIONS

---

## Overview

---

***Take a look at this very well cared for 50' Viking! Captain maintained since new! She features a satin finished interior, Furuno electronics package, Mezzanine seating, black painted mask and an additional fuel tank. Very tastefully decorated interior! Remainder of Passport Premier Premium Extended Marine Protection (expires November 22, 2017). MAJOR PRICE REDUCTION FOR QUICK SALE!!! OWNERS PLANS HAVE CHANGED! MAKE AN OFFER ON THIS GORGEOUS BOAT!!!***

## Basic Information

---

**Category:** Sport Fisherman

**Sub Category:** Convertible

**Model Year:** 2010

**Year Built:** 2010

**Country:** United States

**Vessel Top:** Hardtop

**Fly Bridge:** Yes

**Cockpit:** Yes

## Dimensions

---

**LOA:** 50' 0" (15.24m)

**Beam:** 17' 0" (5.18m)

**Min Draft:** 5' 6" (1.68m)

## Speed, Capacities and Weight

---

**Cruise Speed:** 33 Kts. (38 MPH)

**Max Speed:** 39 Kts. (45 MPH)

**Displacement:** 67000 Pounds

**Water Capacity:** 175 Gallons

**Fuel Capacity:** 1200 Gallons

---

## Accommodations

---

**Total Cabins:** 3

**Total Berths:** 6

**Sleeps:** 6

**Total Heads:** 2

---

## Hull and Deck Information

---

**Hull Material:** Fiberglass

**Deck Material:** Fiberglass

**Hull Configuration:** Modified V-Hull

**Hull Color:** White

---

## Engine Information

---

**Engines:** 2

**Manufacturer:** MAN

**Model:** V-12 1360 CRM

**Engine Type:** Inboard

**Fuel Type:** Diesel

---

# DETAILED INFORMATION

---

## Accommodations

---

Sleeps six owners and guests in three Staterooms for a total of six berths. One Master Head with shower, one Guest Head with shower. Enter the spacious Salon from the starboard side to find a large L-shaped sofa to port. Island Galley with bar stools to starboard. Galley is also to starboard with under counter refrigeration, cook-top, and microwave / convection oven. Beautiful satin finished cabinetry provide ample storage.

## Master Stateroom, Amidship Starboard

---

Step down the Companionway and find the Master Stateroom on the starboard side. Gorgeous Stateroom with plenty of storage and comfortable Island bed. En-suite Head with a Man-sized shower. The queen-sized bed lifts up to provide additional storage!

- Head
- Mirror
- Shower
- Cabinets
- Carpeting
- Wallpaper
- Night stand
- DVD player
- Hanging locker
- 26" Flat-panel TV
- Under bed storage
- Stereo system w/ speakers
- Air conditioning / heater with controls
- Island queen berth w/ System #3 mattress

## Guest Stateroom, Forward

---

Forward Guest Stateroom with an upper & lower bunk arrangement.

- Head
- Shower
- Paneling
- Carpeting
- Wallpaper
- Teak shelf
- Hanging locker

- Under bed drawer
- Under bed storage
- Upper & lower berths
- Stereo system w/ speakers
- Air conditioning / heater with controls

---

## Guest Stateroom, Amidship Port

---

Step down the Companionway to find the mid Guest Stateroom on the port side.

- Head
- Shower
- Paneling
- Carpeting
- Wallpaper
- Hanging locker
- Under bed storage
- Upper & lower berths
- Clothes washer & dryer
- Stereo system w/ speakers
- Air conditioning / heater with controls

---

## Salon

---

Very warm Main Cabin features satin finished teak cabinetry, large L-shaped sofa with storage below. Dinette with teak table is just below the 37" LCD TV coupled to the Viking Home Theater Sound System.

- Blinds
- Paneling
- Carpeting
- Rug runner
- DVD player
- 37" LCD TV
- Cocktail table
- Mini decor kit
- Telephone jack
- Cable TV hookups
- Entertainment center
- Dinette w/ teak table
- Teak Salon valances
- Premier Edition Decor
- Custom wallpaper material



- Satin finished teak cabinetry
- Cherry & holly amtico in Salon entry
- Viking Home Theater Sound System
- Air conditioning / heater with controls
- Large L-shaped sofa w/ storage below
- Vertical teak stripes in Companionway
- Stereo system w/ CD player, speakers

---

## Master Head

---

- Shower
- Paneling
- Wallpaper
- Exhaust fan
- Medicine cabinet
- Cherry & holly amtico flooring
- Burbled Beach Custom vanity top w/ sink
- Overboard, recirculating, electric head w/ holding tank

---

## Guest Head, Forward Port

---

- Shower
- Paneling
- Wallpaper
- Exhaust fan
- Medicine cabinet
- Cherry & holly amtico flooring
- Burbled Beach Custom vanity top w/ sink
- Overboard, recirculating, electric head w/ holding tank

---

## Galley / Laundry, Main Deck, Amidship Starboard

---

- Carpeting
- Water heater
- Clothes dryer
- Clothes washer
- Central vacuum system
- Three-burner, electric stove
- Pressure fresh water system
- Cherry & holly amtico flooring
- Island Galley w/ (2) bar stools w/ no backs

- Sub-Zero, under counter, drawer style freezer
- Burled Beach Corian counter tops w/ bone sink
- Sub-Zero, under counter, drawer style refrigerator
- Slide out drawers above counters provide for extra deep Galley storage

---

## Helm / Electronics and Navigation

---

- 4" Compass
- Sirius SAT radio
- 3kW / 2kW transducer
- Simrad AP24 auto pilot
- Furuno RD-33 sea temp
- (2) Icom 604 VHF radios
- Electric drop down radio box
- Furuno NAV NET chart plotter
- CA 28BC / CA 200 transducer
- Moritz safety monitoring system
- Furuno NAV NET 3D fish finder
- Furuno NAV NET 3D GPS / Plotter
- Black-out Helm treatment w/ storage
- Furuno RD-33 speed & distance logs
- Furuno NAV NET 3D 12kW radar w/ 6' array
- A drop down box displays MAN engine controls & auto pilot
- A pair of RD-33's & a Fusion SAT radio are in the port side electronic drop down radio box
- (3) 12" NAV NET 3D displays featuring GPS / Plotter / Radar / Sounder (in the main electronics box)

---

## Deck

---

- Bow pulpit
- Transom door
- Spreader lights
- (6) Life jackets
- Navigation lights
- Flybridge curtain
- Anchor w/ 250' lines
- (2) Murray Helm seats
- Lewmar V2 electric windlass
- Refrigerated Cockpit step box
- Transom coaming w/ gate (no fish box)
- Removable Flybridge jump seat backrest
- Costa Clear front & side enclosure w/ (3) zippered vents

- Fresh water, salt water, pressure Deck wash down system

---

## Engine and Mechanical Equipment

---

- Trim tabs
- Racor fuel filters
- (2) Bilge blowers
- Oil pressure alarm
- Oil transfer system
- Fire control system
- Fresh water cooling
- Engine synchronizers
- Fiberglass Helm Pod
- Electric trolling valves
- Oil temperature alarm
- Bridge engine controls
- 24v Fuel prime pumps
- Raw water sea strainer
- Fire Suppression System
- Engine fuel shut-off valve
- Hydraulic, wheel steering
- DC Power assist steering
- Engine temperature alarm
- Back-up raw water system
- Reverse cycle air conditioner
- Thermal, acoustical insulation
- Y-valve emergency bilge pump
- CO2, automatic fire extinguisher
- Prep & pre-wire for ice machine
- Quick Recovery hot water heater
- Prep & pre-wire for water maker
- (3) Automatic, manual bilge pumps
- Additional fuel for a total of (2) tanks
- Delta-T Engine Room ventilation system
- Engine Room gauge package at Engine Room entry
- Strainers & thru Hull fittings painted w/ white awlgrip
- Oil change line plumbed to Cockpit dockside box pumps
- Dual color LED rope lights (white & blue) under coaming
- Twin 1360 hp. Diesel I/B 2010 MAN V-12 1360 CRM's w/ 785 hrs.

---

## Electrical System / Equipment

---

- (6) Batteries
- Dockside cables
- 0 / 50' 50A cord
- Battery parallel switch
- Glendenning cable master
- (2) Automatic battery charger
- 12v, 24v DC electrical system
- 110v, 220v AC electrical system
- Onan 21.5kW generator w/ 975 hrs.
- Voltage stabilizer isolation transformer

---

## Cockpit / Fishing Equipment

---

- (5) Rod holders
- (2) Under water lights
- (2) 24volt outlets in Cockpit
- Rupp outriggers w/ spreaders
- 6-rod Rocket launcher (aft rail)
- Prep & pre-wired for teaser reels
- (2) Full-sized fish boxes under Deck
- (4) Rod holders mounted in haunches
- Dedicated salt water supply for on-Deck live well
- Custom 4-rod Rocket launcher w/ driving holders

---

## Exclusions

---

Owner's personal gear and items.

---

## Salesman's Comments

---

***Take a look at this very well cared for 50' Viking! Captain maintained since new! She features a satin finished interior, Furuno electronics package, Mezzanine seating, black painted mask and an additional fuel tank. Very tastefully decorated interior! Remainder of Passport Premier Premium Extended Marine Protection (expires November 22, 2017). MAJOR PRICE REDUCTION FOR QUICK SALE!!! OWNERS PLANS HAVE CHANGED! MAKE AN OFFER ON THIS GORGEOUS BOAT!!!***

---

## Exclusions

---

Owner's personal belongings.

---

## Disclaimer

---

The Company offers the details of this vessel or yacht in good faith but cannot guarantee or warrant the accuracy of this information nor warrant the condition of the vessel. A buyer should instruct his representatives, agents, or his surveyors, to investigate such details as the buyer desires validated. This vessel or yacht is offered subject to prior sale, price change, or withdrawal without notice.

# PHOTOS

**Profile 2**



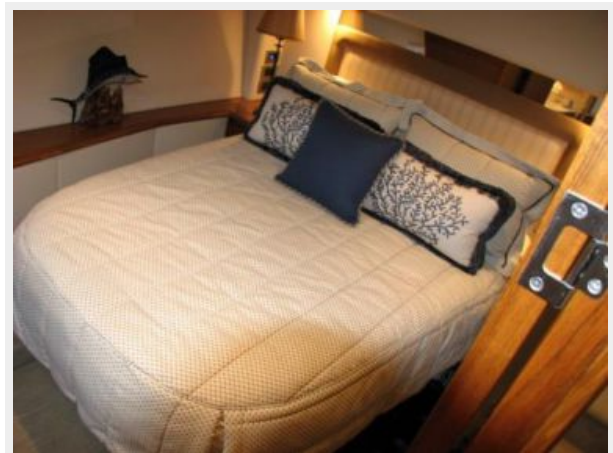
**Master Stateroom 1**



**Master Stateroom 2**



**Master Stateroom 3**



**Guest Stateroom, Amidship Port**

**Master Stateroom 4 - TV**



**Salon 1 - Sofa**



**Salon 2 - Sofa**



**Salon 3 - Dinette**



**Salon 4 - Dinette**



**Salon 5**



**Salon 6**



**Master Head 1**



**Master Head 2 - Shower**





**Galley**



**Laundry**



**Helm / Electronics & Navigation 1 -  
Electronics**



**Helm / Electronics & Navigation 2 -  
Electronics**



**Helm / Electronics & Navigation 3 - Radio Box**



**Helm / Electronics & Navigation 4 - Port Side Electronics Box**



**Helm / Electronics & Navigation 5 - Drop Down Radio Box**



**Deck 1 - Bow**



**Deck 2 - Bow Pulpit**



**Deck 3 - Bridge Seating**



**Deck 4 - Bridge**



**Deck 5 - Starboard Bridge Seating**



**Deck 6 - Bridge Cooler**



**Deck 7 - Lazarette**



**Deck 8 - Port Dockside Box**



**Deck 9 - Starboard Dockside Box**



**Engine & Mechanical Equipment 1 - Port Engine**



**Engine & Mechanical Equipment 2 - Starboard Engine**



**Engine & Mechanical Equipment 3 - Starboard Engine**



**Engine & Mechanical Equipment 4 - Engine Room**



**Engine & Mechanical Equipment 5 - Engine Room**



**Cockpit / Fishing Equipment 1 - Cockpit**



**Cockpit / Fishing Equipment 2 - Mezzanine**



**Cockpit / Fishing Equipment 3 - Mezzanine Seating w/ Storage Box**



**Cockpit / Fishing Equipment 4 - Refrigerated Drink Boxes & Tackle Storage**



**Cockpit / Fishing Equipment 5 - Storage**



**Cockpit / Fishing Equipment 6 - Rocket Launcher**



**Running Profile 1**



**Running Profile 2**



**Sunset Profile**



# CONTACTS

---

Andrey Shestakov, leading yacht broker of the sales department of Shestakov Yacht Sales Inc. Shestakov Yacht Sales Inc., the official representative of the Miami/Fort Lauderdale FL headquarters.

## Contact details

---

Email: [andrey@shestakovyachtsales.com](mailto:andrey@shestakovyachtsales.com)

Web: [shestakovyachtsales.com/en/](http://shestakovyachtsales.com/en/)

## Telephones

---

USA: +1(954)274-4435

## Office hours

---

Monday – Saturday: **9:00 - 21:00** EDT

Sunday: **closed**

## Address

---



Harbour Towne Marina, 850 NE 3rd St,  
STE 213, Dania, FL 33004