

DEBAITABLE — VIKING



Судостроитель: VIKING

Год постройки: 2010

Модель: Катер для спортивной рыбалки

Цена: **ЦЕНА ЯХТЫ ПО ЗАПРОСУ**

Местонахождение: United States

Длина общая: 50' 0" (15.24m)

Ширина: 17' 0" (5.18m)

Мин. осадка: 5' 6" (1.68m)

Крейс. скорость: 33 Kts. (38 MPH)

Макс. скорость: 39 Kts. (45 MPH)

Купить **DEBAITABLE — VIKING** а также выбрать подходящую вам яхту из нашего каталога яхт вам поможет опытный яхтенный брокер Андрей Шестаков. На сегодняшний день компания **Shestakov Yacht Sales Inc.** имеет большое количество яхт в собственном списке продаж, а также тесно сотрудничает со всеми крупными яхтенными производителями по всему миру.

Для того чтобы купить яхту **DEBAITABLE — VIKING** а также проконсультироваться по любому вопросу связанному с покупкой, продажей, чартером яхт позвоните по телефону **+7(918)465-66-44**.

ОГЛАВЛЕНИЕ

ОГЛАВЛЕНИЕ	2
ХАРАКТЕРИСТИКИ	5
Обзор	5
Основная информация	5
Размеры	5
Скорость, вместимость и масса	5
Размещение	6
Корпус и палуба	6
Информация о двигателе	6
ПОДРОБНОЕ ОПИСАНИЕ	7
Accommodations	7
Master Stateroom, Amidship Starboard	7
Guest Stateroom, Forward	7
Guest Stateroom, Amidship Port	8
Salon	8
Master Head	9
Guest Head, Forward Port	9
Galley / Laundry, Main Deck, Amidship Starboard	9
Helm / Electronics and Navigation	10
Deck	10
Engine and Mechanical Equipment	11
Electrical System / Equipment	11
Cockpit / Fishing Equipment	12
Exclusions	12
Salesman's Comments	12
Исключения	12
Отказ от ответственности	13
ФОТОГРАФИИ	14

Master Stateroom 1	14
Profile 2	14
Master Stateroom 2	14
Master Stateroom 3	14
Guest Stateroom, Amidship Port	15
Master Stateroom 4 - TV	15
Salon 1 - Sofa	15
Salon 2 - Sofa	15
Salon 3 - Dinette	15
Salon 4 - Dinette	15
Salon 5	16
Salon 6	16
Master Head 1	16
Master Head 2 - Shower	16
Laundry	17
Galley	17
Helm / Electronics & Navigation 1 - Electronics	17
Helm / Electronics & Navigation 2 - Electronics	17
Helm / Electronics & Navigation 3 - Radio Box	18
Helm / Electronics & Navigation 4 - Port Side Electronics Box	18
Helm / Electronics & Navigation 5 - Drop Down Radio Box	18
Deck 1 - Bow	18
Deck 2 - Bow Pulpit	19
Deck 3 - Bridge Seating	19
Deck 4 - Bridge	19
Deck 5 - Starboard Bridge Seating	19
Deck 6 - Bridge Cooler	19
Deck 7 - Lazarette	19
Deck 8 - Port Dockside Box	20

Deck 9 - Starboard Dockside Box	20
Engine & Mechanical Equipment 1 - Port Engine	20
Engine & Mechanical Equipment 2 - Starboard Engine	20
Engine & Mechanical Equipment 3 - Starboard Engine	21
Engine & Mechanical Equipment 4 - Engine Room	21
Engine & Mechanical Equipment 5 - Engine Room	21
Cockpit / Fishing Equipment 1 - Cockpit	21
Cockpit / Fishing Equipment 3 - Mezzanine Seating w/ Storage Box	21
Cockpit / Fishing Equipment 2 - Mezzanine	21
Cockpit / Fishing Equipment 4 - Refrigerated Drink Boxes & Tackle Storage	22
Cockpit / Fishing Equipment 5 - Storage	22
Cockpit / Fishing Equipment 6 - Rocket Launcher	22
Running Profile 1	22
Running Profile 2	22
Sunset Profile	22
КОНТАКТЫ	23
Контактная информация	23
Телефоны	23
Время работы	23
Адрес	23

ХАРАКТЕРИСТИКИ

Обзор

Take a look at this very well cared for 50' Viking! Captain maintained since new! She features a satin finished interior, Furuno electronics package, Mezzanine seating, black painted mask and an additional fuel tank. Very tastefully decorated interior! Remainder of Passport Premier Premium Extended Marine Protection (expires November 22, 2017). MAJOR PRICE REDUCTION FOR QUICK SALE!!! OWNERS PLANS HAVE CHANGED! MAKE AN OFFER ON THIS GORGEOUS BOAT!!!

Основная информация

Тип судна: Катер для спортивной рыбалки

Подкатегория: Convertible

Модельный год: 2010

Год постройки: 2010

Страна: United States

Верх: Hardtop

Открытая палуба мостика: Да

Кубрик: Да

Размеры

Длина общая: 50' 0" (15.24m)

Ширина: 17' 0" (5.18m)

Мин. осадка: 5' 6" (1.68m)

Скорость, вместимость и масса

Крейс. скорость: 33 Kts. (38 MPH)

Макс. скорость: 39 Kts. (45 MPH)

Водоизмещение: 67000 Pounds

Вместимость воды: 175 Gallons

Объем топливного бака: 1200 Gallons

Размещение

Всего кают: 3

Всего коек: 6

Спальные места: 6

Всего ком. состава: 2

Корпус и палуба

Материал корпуса: Fiberglass

Материал палубы: Fiberglass

Комплектация корпуса: Modified V-Hull

Цвет корпуса: White

Информация о двигателе

Двигатели: 2

Производитель: MAN

Модель: V-12 1360 CRM

Тип двигателя: Inboard

Тип топлива: Diesel

ПОДРОБНОЕ ОПИСАНИЕ

Accommodations

Sleeps six owners and guests in three Staterooms for a total of six berths. One Master Head with shower, one Guest Head with shower. Enter the spacious Salon from the starboard side to find a large L-shaped sofa to port. Island Galley with bar stools to starboard. Galley is also to starboard with under counter refrigeration, cook-top, and microwave / convection oven. Beautiful satin finished cabinetry provide ample storage.

Master Stateroom, Amidship Starboard

Step down the Companionway and find the Master Stateroom on the starboard side. Gorgeous Stateroom with plenty of storage and comfortable Island bed. En-suite Head with a Man-sized shower. The queen-sized bed lifts up to provide additional storage!

- Head
- Mirror
- Shower
- Cabinets
- Carpeting
- Wallpaper
- Night stand
- DVD player
- Hanging locker
- 26" Flat-panel TV
- Under bed storage
- Stereo system w/ speakers
- Air conditioning / heater with controls
- Island queen berth w/ System #3 mattress

Guest Stateroom, Forward

Forward Guest Stateroom with an upper & lower bunk arrangement.

- Head
- Shower
- Paneling
- Carpeting
- Wallpaper
- Teak shelf
- Hanging locker

- Under bed drawer
- Under bed storage
- Upper & lower berths
- Stereo system w/ speakers
- Air conditioning / heater with controls

Guest Stateroom, Amidship Port

Step down the Companionway to find the mid Guest Stateroom on the port side.

- Head
- Shower
- Paneling
- Carpeting
- Wallpaper
- Hanging locker
- Under bed storage
- Upper & lower berths
- Clothes washer & dryer
- Stereo system w/ speakers
- Air conditioning / heater with controls

Salon

Very warm Main Cabin features satin finished teak cabinetry, large L-shaped sofa with storage below. Dinette with teak table is just below the 37" LCD TV coupled to the Viking Home Theater Sound System.

- Blinds
- Paneling
- Carpeting
- Rug runner
- DVD player
- 37" LCD TV
- Cocktail table
- Mini decor kit
- Telephone jack
- Cable TV hookups
- Entertainment center
- Dinette w/ teak table
- Teak Salon valances
- Premier Edition Decor
- Custom wallpaper material

- Satin finished teak cabinetry
- Cherry & holly amtico in Salon entry
- Viking Home Theater Sound System
- Air conditioning / heater with controls
- Large L-shaped sofa w/ storage below
- Vertical teak stripes in Companionway
- Stereo system w/ CD player, speakers

Master Head

- Shower
- Paneling
- Wallpaper
- Exhaust fan
- Medicine cabinet
- Cherry & holly amtico flooring
- Burbled Beach Custom vanity top w/ sink
- Overboard, recirculating, electric head w/ holding tank

Guest Head, Forward Port

- Shower
- Paneling
- Wallpaper
- Exhaust fan
- Medicine cabinet
- Cherry & holly amtico flooring
- Burbled Beach Custom vanity top w/ sink
- Overboard, recirculating, electric head w/ holding tank

Galley / Laundry, Main Deck, Amidship Starboard

- Carpeting
- Water heater
- Clothes dryer
- Clothes washer
- Central vacuum system
- Three-burner, electric stove
- Pressure fresh water system
- Cherry & holly amtico flooring
- Island Galley w/ (2) bar stools w/ no backs

- Sub-Zero, under counter, drawer style freezer
- Burlud Beach Corian counter tops w/ bone sink
- Sub-Zero, under counter, drawer style refrigerator
- Slide out drawers above counters provide for extra deep Galley storage

Helm / Electronics and Navigation

- 4" Compass
- Sirius SAT radio
- 3kW / 2kW transducer
- Simrad AP24 auto pilot
- Furuno RD-33 sea temp
- (2) Icom 604 VHF radios
- Electric drop down radio box
- Furuno NAV NET chart plotter
- CA 28BC / CA 200 transducer
- Moritz safety monitoring system
- Furuno NAV NET 3D fish finder
- Furuno NAV NET 3D GPS / Plotter
- Black-out Helm treatment w/ storage
- Furuno RD-33 speed & distance logs
- Furuno NAV NET 3D 12kW radar w/ 6' array
- A drop down box displays MAN engine controls & auto pilot
- A pair of RD-33's & a Fusion SAT radio are in the port side electronic drop down radio box
- (3) 12" NAV NET 3D displays featuring GPS / Plotter / Radar / Sounder (in the main electronics box)

Deck

- Bow pulpit
- Transom door
- Spreader lights
- (6) Life jackets
- Navigation lights
- Flybridge curtain
- Anchor w/ 250' lines
- (2) Murray Helm seats
- Lewmar V2 electric windlass
- Refrigerated Cockpit step box
- Transom coaming w/ gate (no fish box)
- Removable Flybridge jump seat backrest
- Costa Clear front & side enclosure w/ (3) zippered vents

- Fresh water, salt water, pressure Deck wash down system

Engine and Mechanical Equipment

- Trim tabs
- Racor fuel filters
- (2) Bilge blowers
- Oil pressure alarm
- Oil transfer system
- Fire control system
- Fresh water cooling
- Engine synchronizers
- Fiberglass Helm Pod
- Electric trolling valves
- Oil temperature alarm
- Bridge engine controls
- 24v Fuel prime pumps
- Raw water sea strainer
- Fire Suppression System
- Engine fuel shut-off valve
- Hydraulic, wheel steering
- DC Power assist steering
- Engine temperature alarm
- Back-up raw water system
- Reverse cycle air conditioner
- Thermal, acoustical insulation
- Y-valve emergency bilge pump
- CO2, automatic fire extinguisher
- Prep & pre-wire for ice machine
- Quick Recovery hot water heater
- Prep & pre-wire for water maker
- (3) Automatic, manual bilge pumps
- Additional fuel for a total of (2) tanks
- Delta-T Engine Room ventilation system
- Engine Room gauge package at Engine Room entry
- Strainers & thru Hull fittings painted w/ white awlgrip
- Oil change line plumbed to Cockpit dockside box pumps
- Dual color LED rope lights (white & blue) under coaming
- Twin 1360 hp. Diesel I/B 2010 MAN V-12 1360 CRM's w/ 785 hrs.

Electrical System / Equipment

- (6) Batteries
- Dockside cables
- 0 / 50' 50A cord
- Battery parallel switch
- Glendenning cable master
- (2) Automatic battery charger
- 12v, 24v DC electrical system
- 110v, 220v AC electrical system
- Onan 21.5kW generator w/ 975 hrs.
- Voltage stabilizer isolation transformer

Cockpit / Fishing Equipment

- (5) Rod holders
- (2) Under water lights
- (2) 24volt outlets in Cockpit
- Rupp outriggers w/ spreaders
- 6-rod Rocket launcher (aft rail)
- Prep & pre-wired for teaser reels
- (2) Full-sized fish boxes under Deck
- (4) Rod holders mounted in haunches
- Dedicated salt water supply for on-Deck live well
- Custom 4-rod Rocket launcher w/ driving holders

Exclusions

Owner's personal gear and items.

Salesman's Comments

Take a look at this very well cared for 50' Viking! Captain maintained since new! She features a satin finished interior, Furuno electronics package, Mezzanine seating, black painted mask and an additional fuel tank. Very tastefully decorated interior! Remainder of Passport Premier Premium Extended Marine Protection (expires November 22, 2017). MAJOR PRICE REDUCTION FOR QUICK SALE!!! OWNERS PLANS HAVE CHANGED! MAKE AN OFFER ON THIS GORGEOUS BOAT!!!

Исключения

При продаже яхты исключаются личные вещи владельца.

Отказ от ответственности

Компания предоставляет описание судна или яхты добросовестно, но не может гарантировать точность этой информации, а также не ручается за техническое состояние. Покупатель должен проинструктировать своих агентов или оценщиков исследовать представленную информацию более подробно, по собственному желанию. Продажа судна или яхты, изменение цены или снятие с продажи будет происходить без предварительного уведомления.

ФОТОГРАФИИ

Profile 2



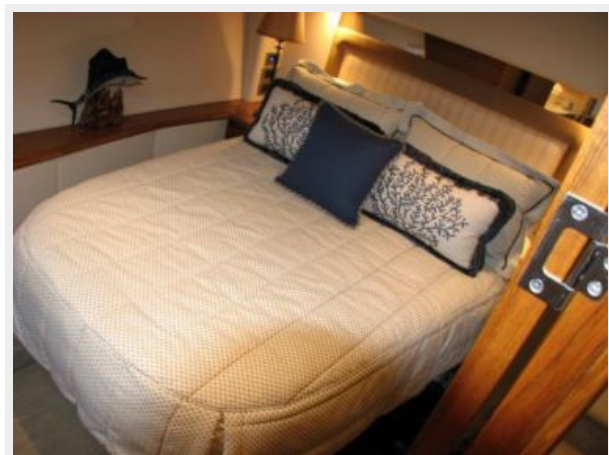
Master Stateroom 1



Master Stateroom 2



Master Stateroom 3



Guest Stateroom, Amidship Port

Master Stateroom 4 - TV



Salon 1 - Sofa



Salon 2 - Sofa



Salon 3 - Dinette



Salon 4 - Dinette



Salon 5



Salon 6



Master Head 1



Master Head 2 - Shower



Galley



Laundry



**Helm / Electronics & Navigation 1 -
Electronics**



**Helm / Electronics & Navigation 2 -
Electronics**



Helm / Electronics & Navigation 3 - Radio Box**Helm / Electronics & Navigation 4 - Port Side Electronics Box****Helm / Electronics & Navigation 5 - Drop Down Radio Box****Deck 1 - Bow**

Deck 2 - Bow Pulpit



Deck 3 - Bridge Seating



Deck 4 - Bridge



Deck 5 - Starboard Bridge Seating



Deck 6 - Bridge Cooler



Deck 7 - Lazarette



Deck 8 - Port Dockside Box



Deck 9 - Starboard Dockside Box



Engine & Mechanical Equipment 1 - Port Engine



Engine & Mechanical Equipment 2 - Starboard Engine



**Engine & Mechanical Equipment 3 -
Starboard Engine**



**Engine & Mechanical Equipment 4 - Engine
Room**



**Engine & Mechanical Equipment 5 - Engine
Room**



Cockpit / Fishing Equipment 1 - Cockpit



Cockpit / Fishing Equipment 2 - Mezzanine



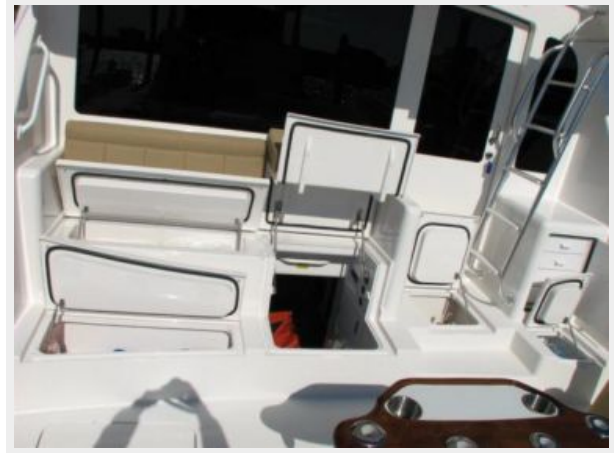
**Cockpit / Fishing Equipment 3 - Mezzanine
Seating w/ Storage Box**



Cockpit / Fishing Equipment 4 - Refrigerated Drink Boxes & Tackle Storage



Cockpit / Fishing Equipment 5 - Storage



Cockpit / Fishing Equipment 6 - Rocket Launcher



Running Profile 1



Running Profile 2



Sunset Profile



КОНТАКТЫ

Андрей Шестаков (Andrey Shestakov) – ведущий яхтенный брокер отдела продаж яхт и судов компании Shestakov Yacht Sales Inc. Официальный представитель Shestakov Yacht Sales Inc. для русскоговорящих клиентов в центральном офисе компании в Майами/Форт Лодердейл/Флорида/США.

Контактная информация

Email: andrey@shestakovyachtsales.com

Web: shestakovyachtsales.com

Телефоны

Краснодарский край: **+7(918)465-66-44**

США, Майами, Флорида: **+1(954)274-4435**

Время работы

Понедельник – Суббота: **9:00 - 21:00**
EDT

Воскресенье: **Закрето**

Адрес



Harbour Towne Marina, 850 NE 3rd St,
STE 213, Dania, FL 33004