

## TWO TYMIN — VIKING



**Судостроитель:** VIKING

**Год постройки:** 2007

**Модель:** Катер для спортивной рыбалки

**Цена:** **ЦЕНА ЯХТЫ ПО ЗАПРОСУ**

**Местонахождение:** United States

**Длина общая:** 48' 0" (14.63m)

**Ширина:** 16' 6" (5.03m)

**Мин. осадка:** 4' 9" (1.45m)

**Крейс. скорость:** 31 Kts. (36 MPH)

**Макс. скорость:** 36 Kts. (41 MPH)

Купить **TWO TYMIN — VIKING** а также выбрать подходящую вам яхту из нашего каталога яхт вам поможет опытный яхтенный брокер Андрей Шестаков. На сегодняшний день компания **Shestakov Yacht Sales Inc.** имеет большое количество яхт в собственном списке продаж, а также тесно сотрудничает со всеми крупными яхтенными производителями по всему миру.

Для того чтобы купить яхту **TWO TYMIN — VIKING** а также проконсультироваться по любому вопросу связанному с покупкой, продажей, чартером яхт позвоните по телефону **+7(918)465-66-44**.

# ОГЛАВЛЕНИЕ

ОГЛАВЛЕНИЕ	2
ХАРАКТЕРИСТИКИ	5
Основная информация	5
Размеры	5
Скорость, вместимость и масса	5
Размещение	5
Корпус и палуба	6
Информация о двигателе	6
ПОДРОБНОЕ ОПИСАНИЕ	7
Salon	7
Galley /Dinette	7
Master Stateroom	8
Master Head	8
VIP Stateroom	8
Starboard Guest Stateroom	9
Guest Head	9
Companionway	9
Flybridge	10
Electronics	10
Electrical	10
Mechanical	11
Engine Room	11
Cockpit	12
Deck	13
Hull	13
HIGHLIGHTS	13
REMARKS	13
Exclusions	14

Disclaimer	14
Исключения	14
Отказ от ответственности	14
<b>ФОТОГРАФИИ</b>	<b>15</b>
Stern	15
Dockside	15
Transom	15
Foredeck	15
Cockpit	15
Cockpit 2	15
Fighting chair	16
Tackle center	16
Large fishbox	16
Helm	16
Helm	16
Helm	16
Custom helm chairs	17
Flybridge forward seating	17
Stbd lounge area	17
Stbd trolling seat	17
Hardtop LED lighting	17
Electric teaser reels	17
Ladder	18
Salon	18
Salon	18
Salon portside	18
TV and dinette	18
Portside cabinetry and entertainment	18
Galley	19

Galley	19
Galley	19
Master stateroom	19
Master stateroom	19
Master head	19
Master head/shower	20
Forward guest stateroom	20
Forward guest stateroom	20
Forward guest	20
Head Guest	20
Midship guest stateroom	20
Midship guest stateroom	21
Washer dryer	21
Lazarette Access	21
Engine room aft	21
Engine room	21
Engine port	21
Engine stbd.	22
Exceptionally clean engine room	22
Generator	22
Eskimo machine	22
Cockpit Lighting	22
HVAC system	22
New LED Lighting	23
<b>КОНТАКТЫ</b>	<b>24</b>
Контактная информация	24
Телефоны	24
Время работы	24
Адрес	24

# ХАРАКТЕРИСТИКИ

## Основная информация

**Тип судна:** Катер для спортивной рыбалки

**Подкатегория:** Convertible

**Год постройки:** 2007

**Модельный год:** 2007

**Верх:** Hardtop

**Страна:** United States

**Кубрик:** Да

**Открытая палуба мостика:** Да

## Размеры

**Длина общая:** 48' 0" (14.63m)

**Ширина:** 16' 6" (5.03m)

**Мин. осадка:** 4' 9" (1.45m)

**Трапы:** 22' 0" (6.71m)

## Скорость, вместимость и масса

**Крейс. скорость:** 31 Kts. (36 MPH)

**Макс. скорость:** 36 Kts. (41 MPH)

**Водоизмещение:** 56450 Pounds

**Чистый вес:** 28 Pounds

**Вместимость воды:** 175 Gallons

**Вместимость сточного бака:** 50 Gallons

**Объем топливного бака:** 1012 Gallons

## Размещение

**Всего кают:** 3

**Всего коек:** 5

**Спальные места:** 6

**Всего ком. состава:** 2

## Корпус и палуба

---

**Материал корпуса:** Fiberglass

**Материал палубы:** Fiberglass

**Комплектация корпуса:** Modified V-Hull

**Цвет корпуса:** White

## Информация о двигателе

---

**Двигатели:** 2

**Производитель:** MAN

**Модель:** V10CR-1100 Common Rail

**Тип двигателя:** Inboard

**Тип топлива:** Diesel

---

# ПОДРОБНОЕ ОПИСАНИЕ

---

## Salon

---

- Luxury edition décor
- Full canvas carpet runner - beige
- Carpeting
- Custom Amtico teak and holly floor at salon entrance
- Custom teak valances wrapped in custom fabric
- ICOM Command mic
- 42" Plasma Fujitsu TV with dedicated SAT TV receiver
- Viking Home Theater
- Sony DVD/VHS
- Bose System
- DirectTV receiver
- Teak cocktail table
- L-shaped lounge with upgraded Ultraleather, rod storage beneath
- Upgraded upholstery and window treatments
- lighting, overhead Xenon lights, recessed
- Indirect decorative lighting behind valances, 24V/120V
- Air conditioning with reverse cycle heat
- Dimmers on low voltage overhead AC lights
- Salon door damper "First Mate", teak interior finish
- Finished teak on aft face of galley island and dinette
- Fixed, frameless side windows, tinted
- Main electrical service panel
- Teak cabinetry with drawers

## Galley /Dinette

---

- Sub Zero refrigerator and freezer, under counter style
- Corian countertops
- Corian sink
- Upgraded custom Amtico teak and holly floor
- Dinette sofa, storage beneath
- Dinette table, teak, high-gloss finish with single pedestal
- Electric range, 30burger, never been cooked on
- Dishwasher, original still in box
- Microwave/convection oven
- Garbage disposal
- Exhaust fan
- Dimmers on low voltage overhead AC lights

- Storage cabinets, varnished teak doors
- Storage cabinets and drawers, varnished teak doors
- Water tank level gauge and pump indicator
- Overhead Xenon lights & fluorescent lighting

---

## Master Stateroom

---

- Island double bed with upgraded orthopedic mattress, storage beneath
- Shape 15" flat screen LCD TV mounted on wall with a
- Dedicated SAT TV receiver and DVD player
- Stereo/CD player
- End tables with teak tops
- Air conditioning with reverse cycle heat
- Carpeting
- Dimmers on low voltage overhead AC lights
- Hanging locker, teak
- Reading lights, overhead with separate switches

---

## Master Head

---

- Towel bar and ring - solid brass fixtures
- Amtico teak and holly flooring
- Air conditioning/heat
- Electric heads with discharge to overboard or holding tank
- Lower vanity with teak face
- Lights, overhead Xenon lights
- Medicine cabinet with mirrored doors
- Corian countertop
- Sink with brass faucet
- Linen storage
- Receptacle, 120V
- Shower light
- Stall shower, fiberglass with brass shower fixtures
- Exhaust fan
- Dimmers on low voltage overhead AC lights

---

## VIP Stateroom

---

- Upper and lower berths
- Carpeting
- A/C with reverse cycle



- Under-berth storage, maple-lined
- Hanging teak locker, cedar liner
- Dimmers on overhead low-voltage AC lights

---

## Starboard Guest Stateroom

---

- Upper and lower berths, with upgraded orthopedic mattress and storage beneath
- Ensuite door to head
- Air conditioning with reverse cycle heat
- Carpeting
- Dimmers on low voltage overhead AC lights
- Hanging locker, cedar-lined with storage drawer
- Lighting, overhead Xenon lights
- Stereo speakers

---

## Guest Head

---

- Upgraded Amtico teak and holly flooring
- Towel bar and ring, solid brass
- Stall shower, fiberglass with brass shower fixtures
- Corian countertop
- Air conditioning/heat
- Dimmers on low voltage overhead AC lights
- Electric heads with discharge to overboard or holding tank
- Linen storage
- Lower vanity with teak face
- Shower light
- Lights, overhead Xenon lights
- Medicine cabinet with mirrored doors
- Sink with brass faucet
- Receptacle, 120V
- Exhaust fan

---

## Companionway

---

- Bilge areas with access hatches Awlgrippped white
- Carpeted steps from galley to companionway
- Central vacuum
- Washer and dryer, stackable
- Lighting - overhead Xenon lights
- Storage cabinet above steps, varnished teak face

---

## Flybridge

---

- US9, electric teaser reel, mounted in hartop
- Murray Brothers Helm chairs
- Starboard jump seat, aft-facing seat
- Electronic single lever controls for pod, with backups
- Fiberglass helm pod
- Fiberglass hardtop with 300 watt molded-in quartz lighting
- Fire system control
- Fuel gauge
- Large, recessed radio box
- Under helm access with lights and storage room
- L-shaped lounge to port
- Straight lounge to starboard
- Manual engine shutdown switches
- Moritz safety monitoring system: fire, engine room temps, bilge, exhaust temp, high coolant temp, low oil pressure
- Power assist hydraulic steering with steering junction block under helm for future stations/autopilot
- Recessed electronics boxes in console
- Top-loading, insulated drink box
- Trim tab
- Stereo speakers
- Remote spotlight
- Compass, lighted
- Fresh water washdown hose

---

## Electronics

---

- (2) Furuno NavNet VX2 (use for backup GPS, sounder or radar)
- Garmin 4212 GPS - 2010
- Viking's Channel Plus - allows SAT TV to be viewed on bridge
- Furuno NavPilot
- (2) ICOM VHF (M602)
- KVH SAT TV
- ACR spotlight
- Furuno RD-30
- Moritz safety monitoring system

---

## Electrical

---

- 24V DC ship's service throughout

- 24V/12V power supply with breakers on flybridge
- 110V outlet in engine room
- Anchor light/navigation lights
- 2 Batteries, independent 24V
- 2 battery chargers
- Battery distribution panel
- Battery parallel system
- Bonded electrical system
- Voltage stabilizer isolation transformer
- Engine room lights, AC and DC
- Generator diesel, 17.5kw, E-Qd Series
- Glendinning cable master
- Color-coded, labeled, numbered wiring system
- Receptacles, 120V duplex with GFI throughout

## Mechanical

---

- Air conditioning zoned with reverse cycle heat
- A/C pressurized fresh water system
- Delta T engine room ventilation system
- Water heater
- Engine room entrance package
- External sea strainers
- Fire suppression system
- Fresh water supply in engine room
- Fresh water manifold isolation system
- 2 Y-valve emergency bilge pumps
- Trim tabs, dual piston
- Fuel transfer system, 24V DC pump
- Fuel priming pumps
- Hour meters, engine and generator Internal sea strainers
- Mufflers, engines and generator
- Oil changing system
- Power assist hydraulic steering
- Racor fuel/water separator filters
- Seacocks, bronze, ball-type sea valves and strainers
- Structural steel engine beds
- Extra bilge pump with check valves

## Engine Room

---

- Upgraded twin MAN V1100 CRM diesel

- Eskimo ice chipper
- Onan 17kw generator
- Gas/water separator for generator
- Upgraded Veem props
- Oil change system
- 110V outlet
- Fuel filters painted in snow white
- Awlgrip engine room
- Awlgrip brass thru-hulls and sea strainers and forward bilges
- All pumps painted in snow white except fresh water pump
- Voltage stabilizer transformer
- 24V fuel priming pumps
- Gauges

## Cockpit

---

- Release fighting chair - teak with rocket launcher and cover
- Eskimo ice chipper to fish box
- Rupp triple spreader outriggers with collapsible rear arms
- Rupp center rigger
- Oil change system connected to cockpit for easy oil changes
- 12 Volt outlet for deep drop, kite or swordfish lites
- Cooler box
- Cable TV and telephone connections
- Phone cable is CAT-5
- Cabinet with storage
- Dockside electric connection - 50 amp/220V/electric retractable Glendinning cablemaster
- Dockside water connection
- Ladder to flybridge, one piece, anodized aluminum with non-skid treads
- Engine room access
- Extended flybridge overhang
- Freshwater washdown
- Sea water washdown
- Molded non-skid deck
- Transom swim steps
- Walk-through transom door with lift gate
- 6 Rupp stainless steel rod holders, flush-mounted
- Stainless steel gas springs on all hatches and lids
- Indirect rope lighting under coaming
- Large, deep drop-in freezer
- Lazarette hatch with access to steering, trim tabs, drain pumps and with spare prop storage
- Lighting recessed lights in flybridge overhang
- Recessed, stainless steel cleats and hawse pipes

- Recessed in-deck fishbox, insulated and removable with pump-out and cleaning
- Stereo speakers powered
- Storage locker
- Self-bailing cockpit with large scuppers
- Awlgripped lazarette

## Deck

---

- Fresh water washdown in anchor locker
- 250' of rope and 50' of chain

## Hull

---

- Ocean LED underwater lights
- Upgraded Veem props, 4 blades
- Oval exhaust outlets
- Awlgripped engine room for enhanced visibility and easier maintenance

## HIGHLIGHTS

---

**- New marine exhaust 2015 - Eskimo chipper serviced 2015 - All linens renewed 2015 - Batteries new 2014 - Custom bridge enclosure 2015 - Fresh bottom maintenance 2015 - Props balanced 2015 - Hull wax 2015 - Cockpit refrigeration/ step box new 2015 - Man display screens 2015 - Main engine, generato, transmission fluids and filters changed 10/2015 by MAN dealer. - KVH gyro new 2015 - LED underwater lights 2015 - LED bridge/cockpit lighting 2015 - Air conditioning pump new 2015 - All units descaled 2015 - All fire/ safety/life-raft are current up to date inspected. - Clean engine room - Awl grip bilges and lazarette - Clean No bow rail and pulpit Palm Beach look. - Onan Generator w/2850 hours as of Oct. 2015 - Generator water pump renewed 2015**

## REMARKS

---

Mover and shaker describes "TWO TYMIN" Fast with a 30 knot cruise at 70 gal per hour. Not bad with today's fuel prices. Newly listed for boat show season, her clean crisp interior decor is a pleasure to show. She has had a lifetime of superb care and engine maintenance, and it shows. Updates have been constant and consistent to keep up with current market look. From LED lighting to custom canvas designers enclosure to all pumps renewed in 2015. She has spent last season fishing from southern Bahamas to Nantucket never missing a travel day to a maintenance issue. Turn key and fish ready. Easily seen in North Palm Beach, FL.

---

## Exclusions

---

Personal gear, raft and EPRIB.

---

## Disclaimer

---

The Company offers the details of this vessel in good faith but cannot guarantee or warrant the accuracy of this information nor warrant the condition of the vessel. A buyer should instruct his agents, or his surveyors, to investigate such details as the buyer desires validated. This vessel is offered subject to prior sale, price change, or withdrawal without notice.

---

## Исключения

---

При продаже яхты исключаются личные вещи владельца.

---

## Отказ от ответственности

---

Компания предоставляет описание судна или яхты добросовестно, но не может гарантировать точность этой информации, а также не ручается за техническое состояние. Покупатель должен проинструктировать своих агентов или оценщиков исследовать представленную информацию более подробно, по собственному желанию. Продажа судна или яхты, изменение цены или снятие с продажи будет происходить без предварительного уведомления.

# ФОТОГРАФИИ

Dockside



Stern



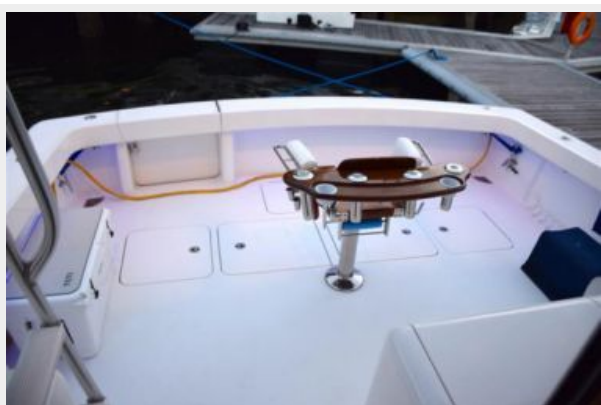
Transom



Foredeck



Cockpit



Cockpit 2



**Fighting chair**



**Tackle center**



**Large fishbox**



**Helm**



**Helm**



**Helm**





**Custom helm chairs**



**Flybridge forward seating**



**Stbd lounge area**



**Stbd trolling seat**



**Hardtop LED lighting**



**Electric teaser reels**



**Ladder**



**Salon**



**Salon**



**Salon portside**



**TV and dinette**



**Portside cabinetry and entertainment**



**Galley**



**Galley**



**Galley**



**Master stateroom**



**Master stateroom**



**Master head**



**Master head/shower**



**Forward guest stateroom**



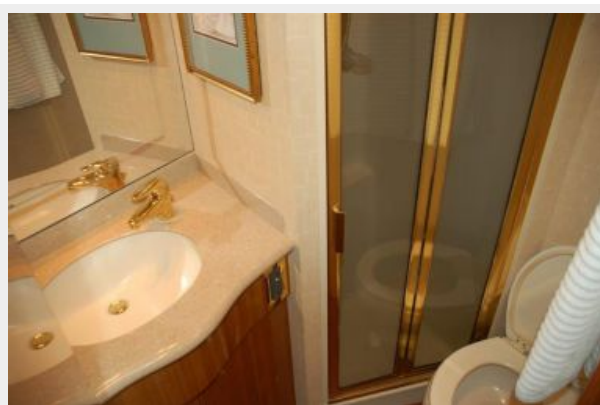
**Forward guest**



**Forward guest stateroom**



**Head Guest**



**Midship guest stateroom**



**Midship guest stateroom**



**Washer dryer**



**Lazarette Access**



**Engine room aft**



**Engine room**



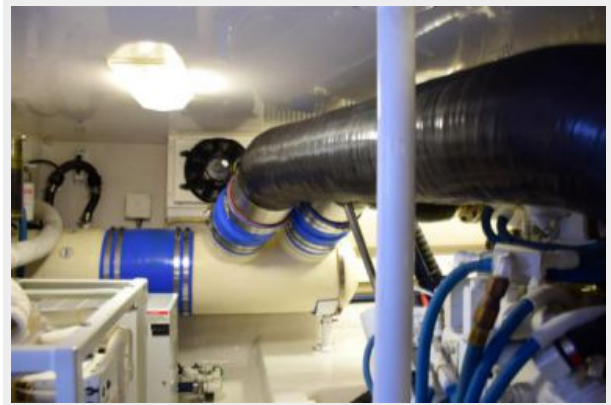
**Engine port**



**Engine stbd.**



**Exceptionally clean engine room**



**Generator**



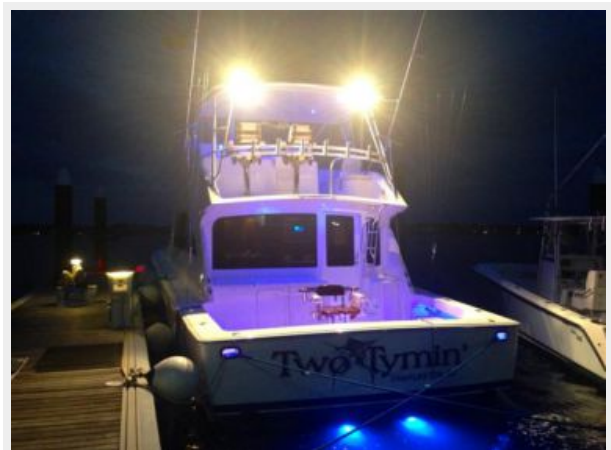
**Eskimo machine**



**HVAC system**



**Cockpit Lighting**



## New LED Lighting



# КОНТАКТЫ

---

Андрей Шестаков (Andrey Shestakov) – ведущий яхтенный брокер отдела продаж яхт и судов компании Shestakov Yacht Sales Inc. Официальный представитель Shestakov Yacht Sales Inc. для русскоговорящих клиентов в центральном офисе компании в Майами/Форт Лодердейл/Флорида/США.

## Контактная информация

---

Email: [andrey@shestakovyachtsales.com](mailto:andrey@shestakovyachtsales.com)

Web: [shestakovyachtsales.com](http://shestakovyachtsales.com)

## Телефоны

---

Краснодарский край: **+7(918)465-66-44**

США, Майами, Флорида: **+1(954)274-4435**

## Время работы

---

Понедельник – Суббота: **9:00 - 21:00**  
EDT

Воскресенье: **Закрето**

## Адрес

---



Harbour Towne Marina, 850 NE 3rd St,  
STE 213, Dania, FL 33004