

160 CLASSIC BILGIN — BILGIN YACHTS



Судостроитель: BILGIN YACHTS

Длина общая: 159' 0" (48.46m)

Год постройки: 2012

Модель: Мега-яхта

Цена: ЦЕНА ЯХТЫ ПО ЗАПРОСУ

Местонахождение: Turkey

Купить 160 Classic Bilgin — BILGIN YACHTS а также выбрать подходящую вам яхту из нашего каталога яхт вам поможет опытный яхтенный брокер Андрей Шестаков. На сегодняшний день компания Shestakov Yacht Sales Inc. имеет большое количество яхт в собственном списке продаж, а также тесно сотрудничает со всеми крупными яхтенными производителями по всему миру.

Для того чтобы купить яхту 160 Classic Bilgin — BILGIN YACHTS а также проконсультироваться по любому вопросу связанному с покупкой, продажей, чартером яхт позвоните по телефону **+7(918)465-66-44**.

ОГЛАВЛЕНИЕ

ОГЛАВЛЕНИЕ	2
ХАРАКТЕРИСТИКИ	3
Обзор	3
Основная информация	6
Размеры	6
Размещение	6
Корпус и палуба	7
Информация о двигателе	7
ФОТОГРАФИИ	8
КОНТАКТЫ	11
Контактная информация	11
Телефоны	11
Время работы	11
Адрес	11

ХАРАКТЕРИСТИКИ

Обзор

One of the finest classic yachts to be built in recent years, lovely detail and voluminous accommodation spaces.

All high end equipment and every convenience aboard for luxurious comfort and whisper quiet cruising.

Sleeps 12 in one huge Master, one large V.I.P. and Four good sized Guest Cabins (all cabins en-suite with finest marble and spacious appointments) – 3 double en-suite crew cabins + Master's cabin on bridge deck.

ORY EUROPE are registered ABYA brokers

Outer Reef Yachts Europe Ltd are ABYA approved brokers, utilising UK contracts and UK lawyer escrow accounting, offering you security and peace of mind.

****we recommend you always use a registered and licensed broker and has liability insurance in place, do not risk your investment with unregistered or un-insured brokers****

Available for viewings now - please contact Trevor DeFaoite

Recent price change to 8.5m euro

Lying Marmaris, Turkey

DIMENSIONS

- Length over all: 160' (48.70m)
- Beam max: 27' 9" (8.50m)
- Draft at Half Load: 6' 9" (2.10m)
- Full Load Displacement: 280 mt.
- Fuel tank capacity: 24.000 lt.
- Fresh water capacity: 18.840 lt.
- Grey & Black water capacity: 8.800 lt.

ACCOMMODATIONS

- Sleeps 12 in one Master, one V.I.P. and Four en-suite Guest Cabins
- Accommodation for Crew : 3 double en-suite Cabins + Crew Mess + Captains en-Suite at helm deck

PERFORMANCE & MAIN MACHINERY

- Main Engines : 2 x MAN 707hp each @ 2.300 rpm
- Gearbox : Twin-Disc Gearbox @ 3.43:1 Ratio
- Generators : 2x 55 KW Koehler Generators @ 380 VAC/50 Hz.
- Stabilizer : TRAC 440 – Zero Speed Stabilizers
- Bow-Thruster : Side-Power 20” 90hp
- Water Maker : Sailor C2000 @ 7200lt./day
- Cruising & Maximum Speed : 13kn – 15kn @ Half Load Condition

OUTFITTING GENERAL CHARACTERISTIC

Paint system: Complete AWLGRIP Paint Systems

Classification: RINA + Hull • Mach Ych MMA (Malta Commercial use)

Windlasses: Hydromar Hydraulic HZI 3000V

Capstans: Hydromar Hydraulic HHI 3500

Anchors: 2x HHP @ 300kg each, Polished Stainless Steel

Chains: 2x 120m Galvanized 20mm caliber

Gangway: Elect. Boarding ladders on each side + 1x hydraulic gangway at aft

Main & upper deck salon door: Stainless Steel framed two wings Electric Doors

ENTERTAINMENT SYSTEM

Crew Mess:

- 1 x LG 26” LED/LCD + JVC - DVD/CD/USB (4 speakers)

Captain’s Cabin:

- 1 x LG 26” LED/LCD + JVC - DVD/CD/USB (2 speakers)

Guest Cabins:

- 4 x LG 32” LED/LCD
- LG Home Theatre Sound System

Master Cabin:

- 1 x LG 42” LED/LCD + Onkyo DVD/Mp3
- Jamo 5 Speakers Theatre System + Active 8” Subwoofer

VIP Cabin:

- 1 x LG 37” LED/LCD in VIP

- Onkyo Blue-Ray/DVD/Mp3
- Onkyo A/V TruHD-DTSHD Receiver
- Jamo 5 Speakers Theatre System + Active 10" Subwoofer

Main Deck Salon:

- 1 x LG 47" LED/LCD + Onkyo Digital Receiver
- Cambridge main music automation units
- Cambridge Local input module & Cambridge System Remote Control
- Jamo 5 Speakers Theatre System + Active 8" Subwoofer
- Onkyo Blue-Ray Multi DVD/Mp3

Upper Deck Salon:

- 1 x LG 47" LED/LCD + Onkyo Digital Receiver
- Cambridge Local input module, Jamo 5 Speakers Theatre System + Active 8" Subwoofer
- All open areas such as main deck aft, upper deck aft & front and main galley, upper deck pantry and helm station are equipped with Jamo outdoor Speakers and volume control.

GALLEY

Galley Appliances:

- FRANKE FDF 1211 PIXS 1200 45 Format Extractor Hood (120cm)
- FRANKE XL 3x single Stainless Steel Sink
- SIEMENS ET 875 SC 11D Build-in Ceramic Five Electric Burners (80cm)
- SIEMENS ET 375 GU 11E Build-in Lava Plate Electric Grill (30cm)
- SIEMENS HB 953 R 50 Build-in Electric Oven (90cm)
- SIEMENS HB 73 AB 550 Build-in Electric Oven (60cm)
- SIEMENS HF 25 G5L2 Build-in Microwave
- SIEMENS SN 56T 598EU Build-in Dish Washer
- SIEMENS 2x KF 9 INPJ 10 NE Double No-Frost Refrigerator/Freezer
- GENERAL ELECTRIC ZDWG 240 NBS Wine Cooler
- U-Line Ice Maker at main Galley and upper deck pantry

Laundry Equipment:

- Double BOSCH WTE 8630XTR 8kg Dryer
- Double BOSCH WAS 247X1TR 8kg Was

NAVIGATION

Raymarine Suite:

- E140W DISPLAY (EU) - 3 pcs
- RAYSTAR 125 PLUS - 1 pcs
- DSM 300 DIGITAL SOUNDER MODULE - 1 pcs

- B744VL TH BRONZE LONG DST TRIDUCER 600W - 1 pcs
- SEATALK HS NETWORK CABLE 20M - 2 pcs
- SEATALK HS NETWORK CABLE 1.5M - 2 pcs
- 4KW PEDESTAL - HD DIGITAL (INCLUDES VCM100) - 1 pcs
- 48" OPEN ARRAY - HD DIGITAL - 1 pcs
- DIGITAL RADAR CABLE (25M) - 1 pcs
- SEATALK HS NETWORK SWITCH - 1 pcs
- RAY218E VHF RADIO - 1 pcs
- FRONT FLUSH MOUNT KIT 218/E - 1 pcs
- HAILING HORN* - 1 pcs
- SPXSOL SMARTPILOT CORE PACK - 1 pcs
- ST6002 FLUSH MOUNT C/U - 1 pcs
- E WIDESCREEEN I/O VIDEO CABLE - 2 pcs
- Dome waterproof IR - 3 pcs
- Dome camera IR - 3 pcs
- 2,4m VHF antenna - 2 pcs
- DVR - 1 pcs

DISCLAIMER

The company offers the details of this vessel in good faith but cannot guarantee or warrant the accuracy of this information nor warrant the condition of the vessel. A buyer should instruct his agents, or his surveyors, to investigate such details as the buyer desires validated. This vessel is offered subject to prior sale, price change, or withdrawal without notice.

Основная информация

Тип судна: Мега-яхта

Модельный год: 2012

Год постройки: 2012

Страна: Turkey

Открытая палуба мостика: Да

Размеры

Длина общая: 159' 0" (48.46m)

Размещение

Всего кают: 6

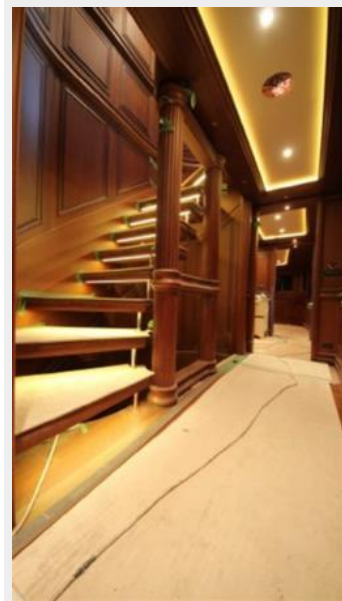
Корпус и палуба

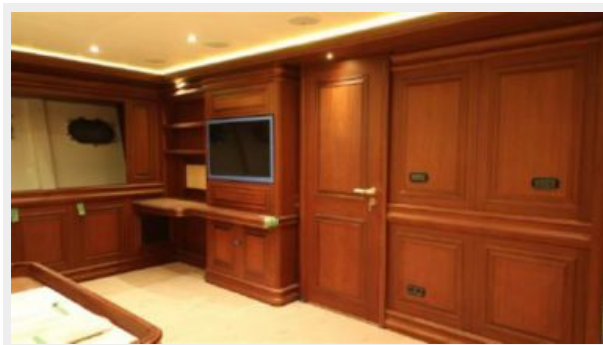
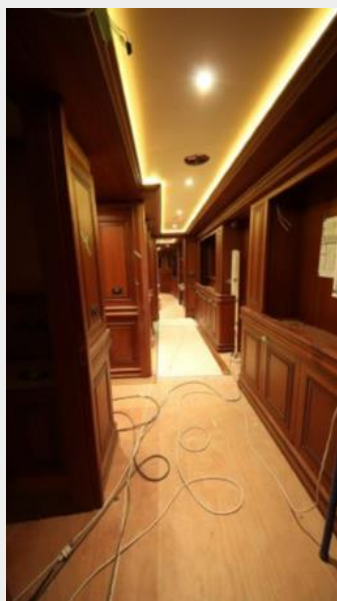
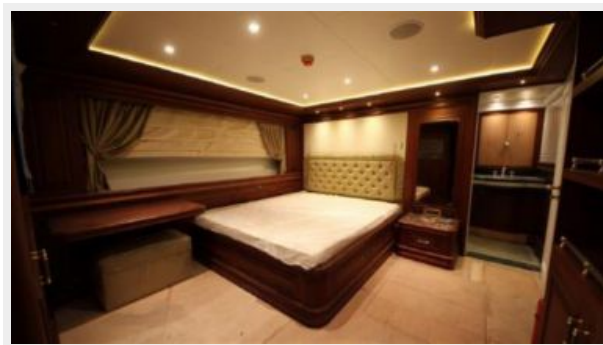
Материал корпуса: Steel

Информация о двигателе

Производитель: MAN

ФОТОГРАФИИ







КОНТАКТЫ

Андрей Шестаков (Andrey Shestakov) – ведущий яхтенный брокер отдела продаж яхт и судов компании Shestakov Yacht Sales Inc. Официальный представитель Shestakov Yacht Sales Inc. для русскоговорящих клиентов в центральном офисе компании в Майами/Форт Лодердейл/Флорида/США.

Контактная информация

Email: andrey@shestakovyachtsales.com

Web: shestakovyachtsales.com

Телефоны

Краснодарский край: **+7(918)465-66-44**

США, Майами, Флорида: **+1(954)274-4435**

Время работы

Понедельник – Суббота: **9:00 - 21:00**
EDT

Воскресенье: **Закрито**

Адрес



Harbour Towne Marina, 850 NE 3rd St,
STE 213, Dania, FL 33004