

NO NAME — ZEELANDER YACHTS



Builder: [Zeelander Yachts](#)

Year Built: 2012

Model: Cruiser

Price: PRICE ON APPLICATION

Location: United States

LOA: 44' 0" (13.41m)

Beam: 13' 2" (4.01m)

Max Draft: 3' 0" (0.91m)

Max Speed: 34 Kts. (39 MPH)

Our experienced yacht broker, Andrey Shestakov, will help you choose and buy a yacht that best suits your needs **No Name — Zeelander Yachts** from our catalogue. Presently, at Shestakov Yacht Sales Inc., we have a wide variety of yachts available on our sale's list. We also work in close contact with all the big yacht manufacturers from all over the world.

If you would like to buy a yacht **No Name — Zeelander Yachts** or would like help answering any questions concerning purchasing, selling or chartering a yacht, please call **+1(954)274-4435**

TABLE OF CONTENTS

TABLE OF CONTENTS	2
SPECIFICATIONS	4
Overview	4
Basic Information	4
Dimensions	4
Speed, Capacities and Weight	4
Accommodations	4
Hull and Deck Information	5
Engine Information	5
DETAILED INFORMATION	6
Hull	6
Superstructure	6
Deck	6
Platform and Step Storage	7
Wheelhouse	7
Master Cabin	8
Galley	9
Head	9
VIP Cabin	10
Storage Room	10
Engine Room	10
Safety & Equipment	11
Exclusions	11
Disclaimer	11
PHOTOS	12
CONTACTS	17
Contact details	17
Telephones	17

Office hours 17

Address 17

SPECIFICATIONS

Overview

This Zeelander is from a very unique line of express cruisers. This particular hull is a gorgeous Bentley Blue with the upgraded Twin Volvo IPS 600 375 hp with joystick controls. She also features IPS Dynamic Positioning and upgraded A/C package.

Basic Information

Category: Cruiser

Sub Category: Express

Model Year: 2012

Year Built: 2012

Country: United States

Dimensions

LOA: 44' 0" (13.41m)

LWL: 41' 0" (12.50m)

Beam: 13' 2" (4.01m)

Max Draft: 3' 0" (0.91m)

Speed, Capacities and Weight

Max Speed: 34 Kts. (39 MPH)

Displacement: 30865 Pounds

Water Capacity: 150 Gallons

Holding Tank: 50 Gallons

Fuel Capacity: 400 Gallons

Accommodations

Total Cabins: 2

Total Heads: 1

Hull and Deck Information

Hull Material: Fiberglass

Engine Information

Engines: 2

Manufacturer: Volvo Penta

Model: IPS 600

Engine Type: Inboard

Fuel Type: Diesel

DETAILED INFORMATION

Hull

- “Super Yacht” portholes Master and VIP
- Antifouling
- Core infused sandwich Vinylester Hull
- Hull stiffened with stringers supported by transverse bulkheads and floors
- Stainless steel rub rail
- Bronze seacocks on all underwater tru-hull fittings
- 2 “head-lights” in the bow
- Volvo QL Trim Tabs

Superstructure

- Deck is in sandwich construction with core supported by bulkheads and frames
- 316 Oval SST hand rails all around
- Radar Arch with Dome, SST Mast
- Lopolight LED navigation lights
- Zeelander Design Side Logo with Back Light

Deck

- All decks, steps and cockpit in Esthec composite decking
- Zeelander Design SST Flagpole with flag
- Zeelander Design Oval, Railing and Bollards
- U-Lounge or Sun Bed
- Anchor windlass with 70 ft chain, 300ft rope and polished 20 kg anchor
- 6 Mooring lines 5/8 x 30 with 12” eye

-
- 4 Fenders with lines and 6 fender covers with “Zeelander logo” or “Boat Name”
 - Two pairs of spring cleats each side deck
 - Two bow cleats
 - Two aft cleats
 - Stainless steel bow plate, roller and anchor
 - Side Logo “Zeelander“ in chrome
 - Chain locker and fender stowage
 - 3 x windscreen wipers and washers
 - Safety hand rails
 - Deck wash outlets
 - Self-draining cockpit
 - Round Escape hatch Master cabin
 - Entrance hatch to storage area
 - Engine room hatch - electrical controlled
 - Cockpit lighting
 - Trumpet horn

Platform and Step Storage

- Stern Platform with emergency button to open from in the water
- Integrated swimming ladder in platform
- Swimming platform in Esthec Composite Decking
- Deck wash outlet
- Dockside water inlet
- 50 amp Shore Power Connection

Wheelhouse

- Luxury Helm Chair

-
- Outside seating area (6 persons)
 - Wet bar and sink with hot and cold water
 - 8 person seating and dining area
 - Wheelhouse locker
 - Electric sliding sunroof with composite panel
 - Dash board with system control switches
 - Volvo electronic engine controls
 - Volvo electronic steering
 - Volvo Joystick control
 - Volvo engine monitoring
 - Volvo alarm panel
 - Volvo QL trim tabs control
 - Compass
 - Radio / CD player with four speakers

Master Cabin

- Queen-size bed
- Air condition with reversed cycle heating
- Storage under settee
- Storage lockers above settee
- Ceiling and wall covering
- Ocean Air screen and privacy cover
- Privacy Curtain
- Reading lights
- AC power points
- Teak flooring

- 10 gallon water heater
- Fire extinguisher
- Smoke detector
- CD player + TV with two speakers

Galley

- Refrigerator and freezer
- “Superyacht“ Portholes
- Main control panel AC/DC, battery charger and generator control
- AC power points
- Storage lockers above and below counter top
- Ceramic hob 2-burner with extractor fan
- Combination Convection Microwave / Oven
- Sink with hot and cold water mixer tap
- Corian counter
- Special built in garbage storage
- 50 gallon holding tank with deck discharge and monitoring
- Fire extinguisher
- Carbon monoxide and Smoke detector

Head

- Sink with hot and cold water mixer tap
- Storage lockers above and below counter top
- Mirrors on above counter lockers
- Corian counter
- Teak floor Vacuum Water Flushed Electrical operated Toilet
- Enclosed shower with glass door
- Ventilation (fan)
- AC power points

- “Superyacht“ Portholes

VIP Cabin

- Queen-size bed
- “Superyacht“ Portholes
- Storage lockers beside bed
- Reading lights
- AC power points
- Teak flooring
- One 2000 GPH automatic bilge pump with control at helm
- One fresh water tank 150 gallons with monitoring
- Variable speed fresh water pump and filter system
- Fire extinguisher
- Smoke detector

Storage Room

- Fire Extinguisher
- One Composite Fuel Tank with Vents, Fuel Pipes and Monitoring
- Volvo Fuel Tank Level Senders
- Storage-room Lights
- DC main fuse box
- Battery Charger 80 Amp.
- 12V Service Batteries
- Tool Box

Engine Room

- Silent Line Group sound insulation bulkheads and ceiling
- Ultra Silent Generator by Silent Line Group with water separator and under water exhaust system
- Two diesel engines Volvo Penta IPS 500
- Volvo galvanic corrosion system for IPS drives
- Volvo high output alternators
- 12V Start batteries one set for each engine
- Emergency battery interconnect
- Ultra Silent Generator by Silent Line
- Electrical bonding system
- Sea strainer filter for A/C and generator
- Water-cooled exhausts

- Bronze seacocks on all under water through hull fittings
- Stainless steel hull side engine room ventilation
- One 2000 GPH automatic bilge pump with control at helm
- FE-227 automatic / manual fire extinguisher
- Racor fuel filters for main engines and generators
- Engine room lights
- Zeelander Design By Pass Exhaust System

Safety & Equipment

- 8 x Life Jackets
- 2 x Child Life Jackets
- Flare set with hand, parachute and smoke signals
- USCG safety and medical kit
- Man overboard Life Sling with 100ft floating Line
- Sound Signals, Day Shapes and Navigation Lights Poster
- International regulations for Preventing Collision at Sea
- U.S. Flag for Stern
- Set of Manuals for all Equipment on board
- Owner's Manual

Exclusions

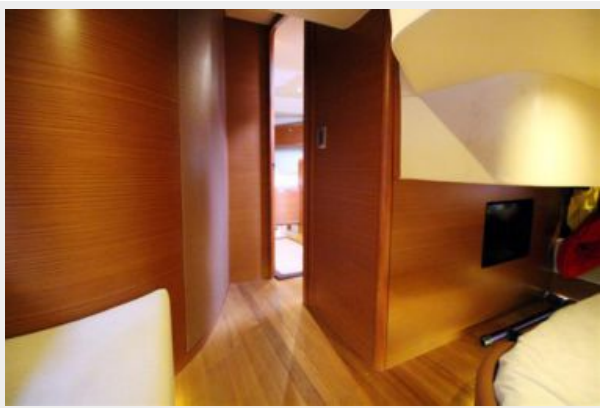
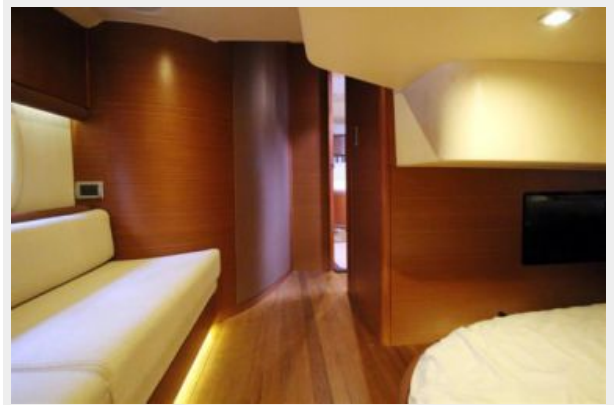
Owner's personal belongings.

Disclaimer

The Company offers the details of this vessel or yacht in good faith but cannot guarantee or warrant the accuracy of this information nor warrant the condition of the vessel. A buyer should instruct his representatives, agents, or his surveyors, to investigate such details as the buyer desires validated. This vessel or yacht is offered subject to prior sale, price change, or withdrawal without notice.

PHOTOS











CONTACTS

Andrey Shestakov, leading yacht broker of the sales department of Shestakov Yacht Sales Inc. Shestakov Yacht Sales Inc., the official representative of the Miami/Fort Lauderdale FL headquarters.

Contact details

Email: andrey@shestakovyachtsales.com

Web: shestakovyachtsales.com/en/

Telephones

USA: +1(954)274-4435

Office hours

Monday – Saturday: **9:00 - 21:00** EDT

Sunday: **closed**

Address



Harbour Towne Marina, 850 NE 3rd St,
STE 213, Dania, FL 33004