

SEA LION II — WHITICAR



Builder: WHITICAR

Year Built: 1963

Model: Sport Fisherman

Price: PRICE ON APPLICATION

Location: United States

LOA: 53' 0" (16.15m)

Beam: 15' 0" (4.57m)

Max Speed: 30 Kts. (35 MPH)

Our experienced yacht broker, Andrey Shestakov, will help you choose and buy a yacht that best suits your needs **Sea Lion II — WHITICAR** from our catalogue. Presently, at Shestakov Yacht Sales Inc., we have a wide variety of yachts available on our sale's list. We also work in close contact with all the big yacht manufacturers from all over the world.

If you would like to buy a yacht **Sea Lion II — WHITICAR** or would like help answering any questions concerning purchasing, selling or chartering a yacht, please call **+1(954)274-4435**

TABLE OF CONTENTS

TABLE OF CONTENTS	2
SPECIFICATIONS	5
Basic Information	5
Dimensions	5
Speed, Capacities and Weight	5
Accommodations	5
Hull and Deck Information	5
Engine Information	5
DETAILED INFORMATION	6
Sea Lion Details	6
Exclusions	6
Disclaimer	7
PHOTOS	8
Bow Profile	8
Bow Profile	8
Profile	8
Cockpit	8
Cockpit	8
Cockpit	8
Cockpit	9
Cockpit	9
Cockpit	9
Cockpit	9
Flybridge	9
Flybridge	9
Flybridge	10
Flybridge	10
Flybridge	10

Flybridge	10
Flybridge	10
Salon	10
Salon	11
Salon	11
Dining	11
Dinette	11
Wet Bar	11
Dinette	11
Galley	12
Wet Bar	12
Galley	12
Galley	12
Forward Stateroom	13
Forward Stateroom	13
Guest Stateroom	13
Guest Stateroom	13
Guest Head	14
Guest Head	14
Engine Room	14
Engine Room	14
Engine Room	14
Engine Room	14
Engine Room	15
Engine Room	15
Port Profile	15
Stern Profile	15
Stern Profile	16
Stern Profile	16

Stern Profile	16
CONTACTS	17
Contact details	17
Telephones	17
Office hours	17
Address	17

SPECIFICATIONS

Basic Information

Category: Sport Fisherman

Sub Category: Convertible

Model Year: 1963

Year Built: 1963

Country: United States

Fly Bridge: Yes

Cockpit: Yes

Dimensions

LOA: 53' 0" (16.15m)

Beam: 15' 0" (4.57m)

Speed, Capacities and Weight

Max Speed: 30 Kts. (35 MPH)

Water Capacity: 80 Gallons

Fuel Capacity: 820 Gallons

Accommodations

Total Cabins: 2

Total Heads: 1

Hull and Deck Information

Hull Material: Fiberglass

Engine Information

Manufacturer: MAN

DETAILED INFORMATION

Sea Lion Details

Vessel Walkthrough The "Sea Lion II" is a 2 stateroom, 1 head, galley down with plenty of headroom and an open feeling. As you walk into the salon to port is a cabinet with drawers, sofa and barrel chair. To starboard there are three cabinets with storage, a dinette and a wet bar with icemaker below. Walking down a few steps forward of salon you have a large dinette to port and a "U" shaped galley to starboard. Going forward of galley you have a guest stateroom to starboard with upper and lower bunks, night stand with four drawers, hanging locker, storage under lower bunk and rod storage above top bunk. Across from guest stateroom is head with shower stall. The master stateroom is forward with large V bunks, 2 large hanging lockers, drawer storage under both bunks and rod storage outboard and on ceiling. The bridge has a hard top, center console helm with lots of bench seating to port, starboard and forward of helm.

There are 43 customized rod hangers throughout the boat for everything from 130's to fly rods!

Interior NEW interior includes: Sofa with storage Carpet Wallpaper Paint Mattresses All soft goods Varnished walls Galley Whirlpool Gold refrigerator and freezer Sharp carousel microwave Princess three burner electric stove and oven Dual S/S sink Storage above and below counter top Kitchen Air ice cuber in Salon **Electronics** Nav/Net C-map Vx2 Two Standard Horizon VHF Furuno RD-30 Simrad autopilot New Garmin 7216 (2014) Ritchie compass Sirius radio 2 New Standard Horizon radios (2014) AM/FM Stereo on bridge Sony receiver and Magnavox DVD/VHS in Salon TOWER Icom VHF Furuno RD-30 Horizon Hailer Ritchie Compass Electrical & Mechanical MAN engines installed in 2000 - 820hp 10 cylinder 4000 hours 20 kW Kohler generator new 2007 with 500 Hours 12V, 24V Electrical system 50 amp shore power cord Charles 12V battery charger Sentry 24V battery charger 24V engine starting batteries 12V generator battery 12V house battery Air horns Racor filters Oil change system Tank tender Bennett trim tabs Dripless shaft logs Hynautic steering New cockpit fuel tanks in 2007 12" exhaust installed in 2007 High speed rudders 2007 Fuel lines replaced 2007 New A/C compressor & controls Delta "T" air vents 2001 Four Cruisair AC units Deck Full cold molded bottom installed in 1990 Teak cockpit new 2007 Teak covering boards 2007 Teak toe rail Tower with buggy top and belly band Fiberglass hard top Three sided enclosure (New 2014) Salt and Fresh water wash down Ideal windlass Spreader lights Full cold molded bottom installed in 1990 Eight person Givens life raft New mezzanine with insulated fish box & storage New cushions Awlgrip paint on entire exterior of boat (2014) 1990 New cold molded bottom by Whiticar Fishing Equipment Rupp triple spreader outriggers Center Rigger Scopinich rocket launcher Six rod holders on bridge Four rod holders on tower legs Four rod holders in gunnels Live well Transom door Tackle Center Includes: Tackle drawers and storage cabinet to starboard Freezer to port **Exclusions** Personal items Fishing equipment

Exclusions

Owner's personal belongings.

Disclaimer

The Company offers the details of this vessel or yacht in good faith but cannot guarantee or warrant the accuracy of this information nor warrant the condition of the vessel. A buyer should instruct his representatives, agents, or his surveyors, to investigate such details as the buyer desires validated. This vessel or yacht is offered subject to prior sale, price change, or withdrawal without notice.

PHOTOS

Bow Profile



Bow Profile



Profile



Cockpit



Cockpit



Cockpit



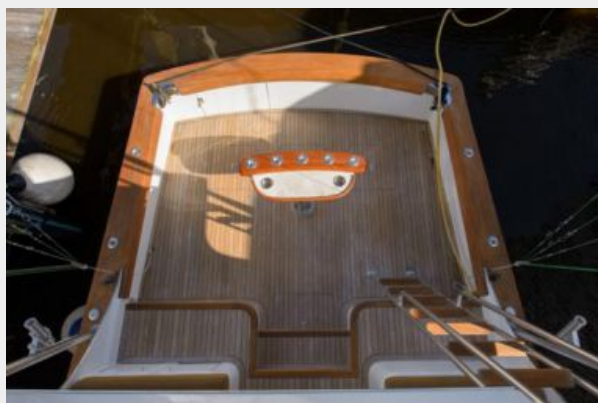
Cockpit



Cockpit



Cockpit



Cockpit



Flybridge



Flybridge



Flybridge



Flybridge



Flybridge



Flybridge



Flybridge



Salon



Salon



Salon



Dining



Dinette



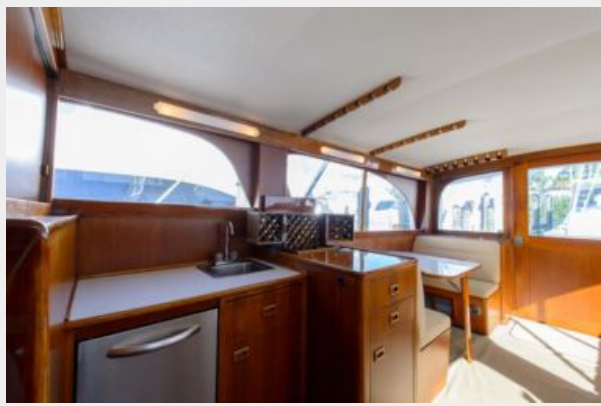
Dinette



Wet Bar



Wet Bar



Galley



Galley

Galley



Forward Stateroom



Forward Stateroom



Guest Stateroom



Guest Stateroom



Guest Head



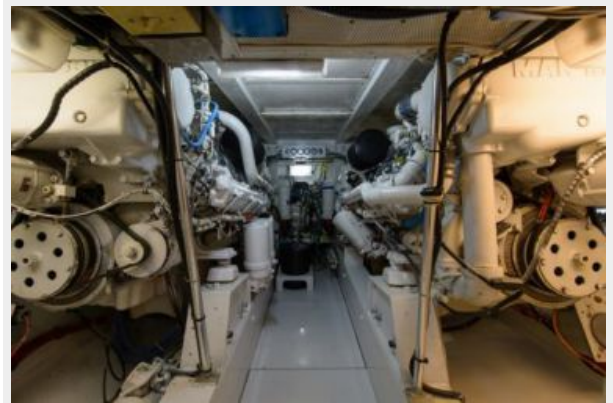
Guest Head



Engine Room



Engine Room



Engine Room



Engine Room



Engine Room



Engine Room



Port Profile



Stern Profile



Stern Profile



Stern Profile



Stern Profile



CONTACTS

Andrey Shestakov, leading yacht broker of the sales department of Shestakov Yacht Sales Inc. Shestakov Yacht Sales Inc., the official representative of the Miami/Fort Lauderdale FL headquarters.

Contact details

Email: andrey@shestakovyachtsales.com

Web: shestakovyachtsales.com/en/

Telephones

USA: +1(954)274-4435

Office hours

Monday – Saturday: **9:00 - 21:00** EDT

Sunday: **closed**

Address



Harbour Towne Marina, 850 NE 3rd St,
STE 213, Dania, FL 33004